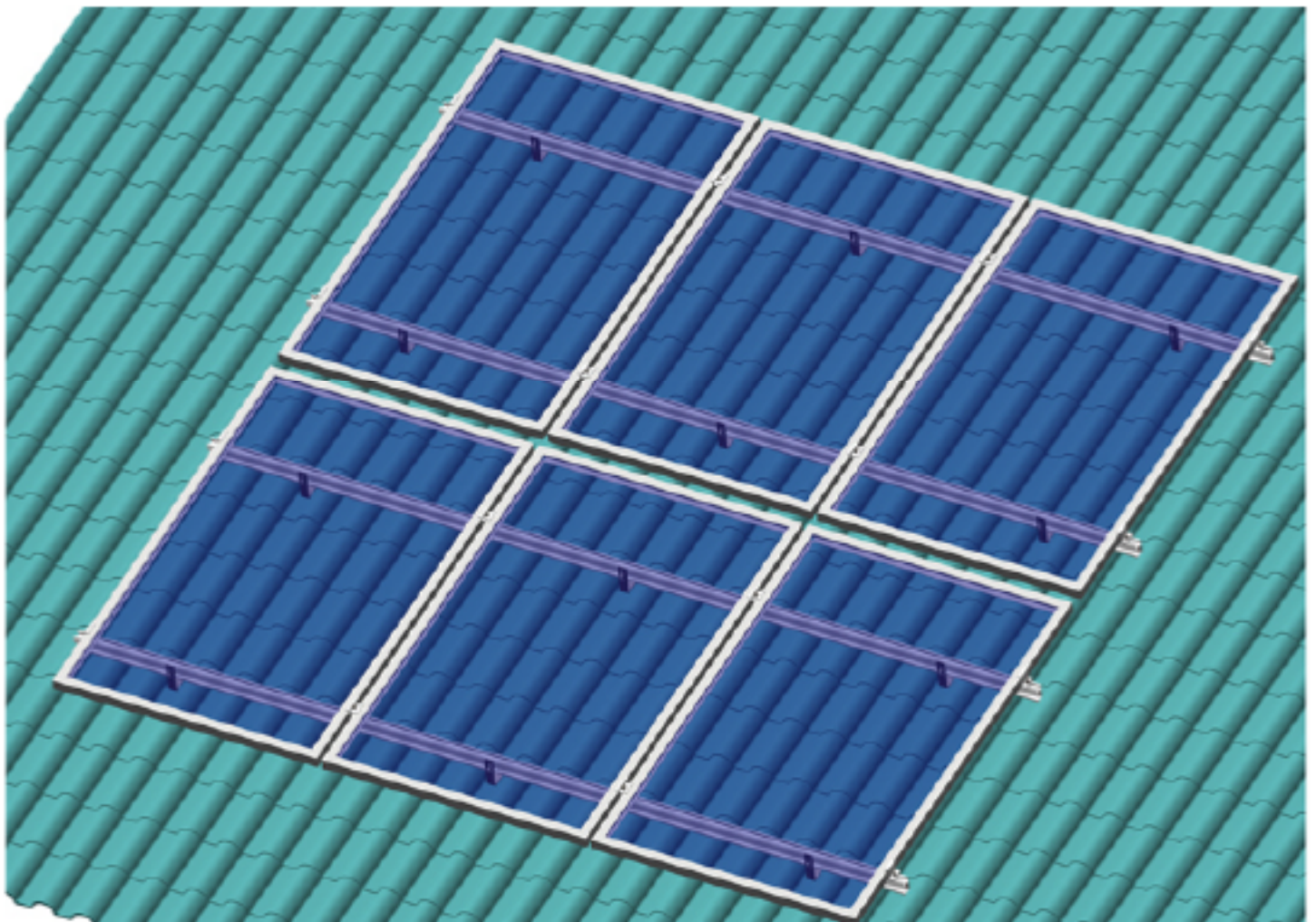





XIAMEN ART SIGN CO.,LTD.


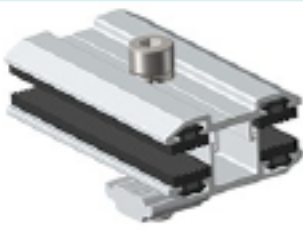
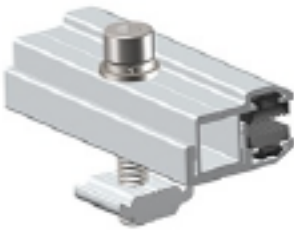
Tile Roof Mounting System

Installation Guide



● Components List

	
<p>AS-DR-01A D rail 01A# W32.30*H59.45mm Material: aluminum 6005-T5</p>	<p>AS-DR-01B D rail 01B# W32.10*H53.75mm Material: aluminum 6005-T5</p>
	
<p>AS-DR-03 D rail 03# W31.70*H46.70mm Material: aluminum 6005-T5</p>	<p>AS-DRS-01 1# D rail splice L150*W23.6*H8mm Material: aluminum 6005-T5 Allen bolt M8*20mm 2pcs Application:AS-DR-01A/01B/03#</p>
	
<p>AS-DRS-02 2# D rail splice L150*W17.9*H30mm Material: aluminum 6005-T5 Rivet 1pcs Application: AS-DR-01A/01B</p>	<p>AS-DMC D rail mid clamp 40/50mm width Material: aluminum 6005-T5 Application: Framed panel, aluminum rail - D nut series</p>

	
<p>AS-DEC D rail end clamp 40/50mm width Material: aluminum 6005-T5 Application: Framed panel, aluminum rail - D nut series</p>	<p>AS-DTFMC D rail thin film mid clamp 80mm width Material: aluminum 6005-T5 Application: thin film thickness 3-8mm, aluminum rail- D nut series</p>
	
<p>AS-DTFEC D rail thin film end clamp 80mm width Material: aluminum 6005-T5 Application: thin film thickness 3-8mm, aluminum rail- D nut series</p>	<p>AS-RH-01 Roof hook 1# Self-tapping screw M6.3*80 3pcs Application: tile / ceramic roof</p>

● Installation Tools



Allen Key (A 8mm)



Angle Grinder



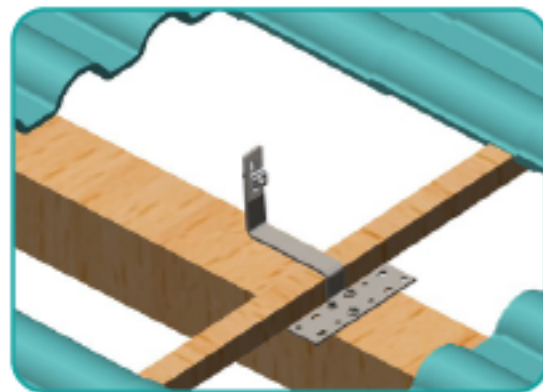
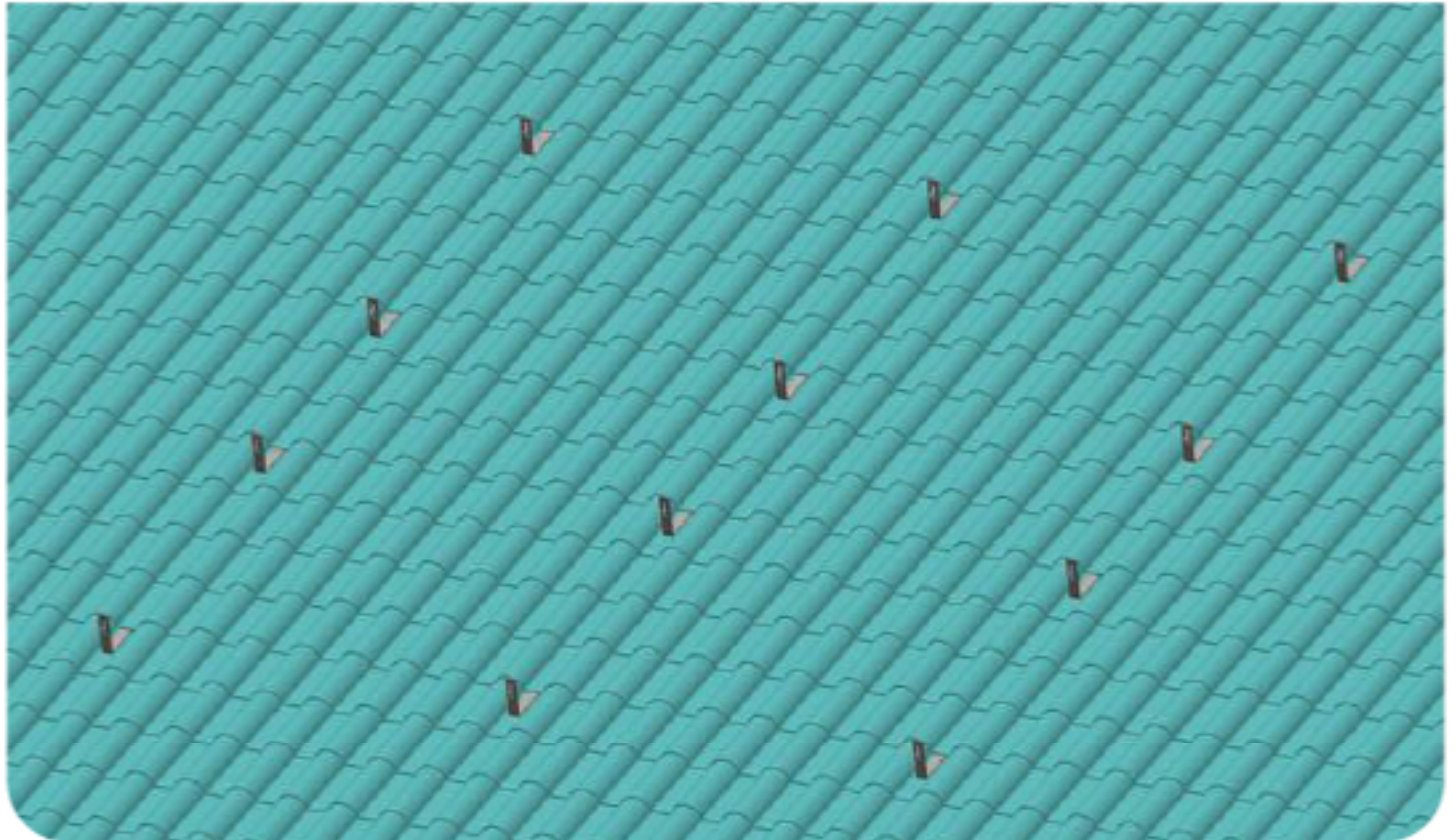
Tape Measure



Impact Driver

STEP 1: SUS304 Roof hook placement.

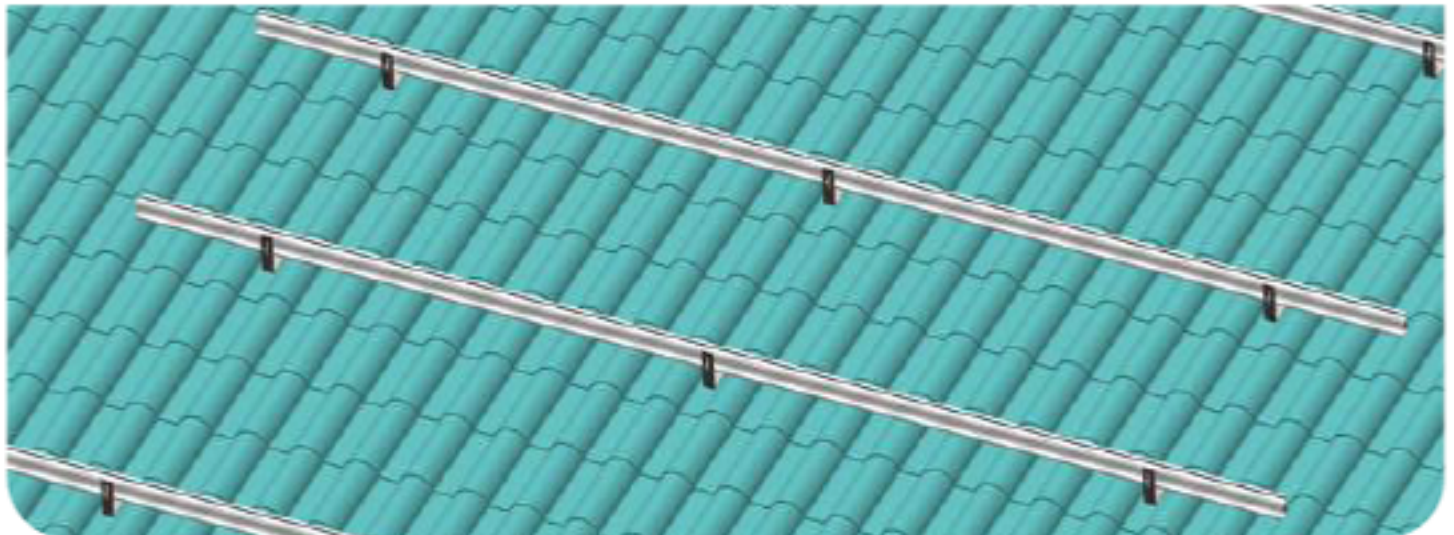
Arrange the roof hook position as previously designed layout, take away top roof tiles. Fix the hook into roof beam by using self-tapping screw M6.3*80. If possible, cut off the tile part that covered the roof hook.



Fix the roof hook on the beam by self-tapping screw M6.3*80

STEP 2 Rail installation.

Put the D nut of roof hook into rail slot and then fasten firmly.
Rail splice will be connected between 2 rails.



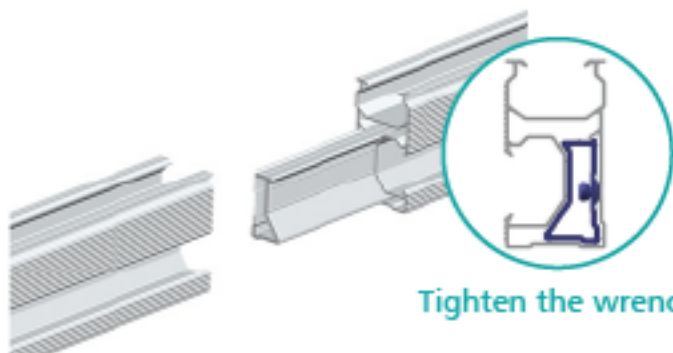
Tighten the wrench

External rail splice, fasten 2 rails via allen bolt M8*20.



Internal rail splice, fix 2 rails via the rivet.

2 solutions of rail splice for option.

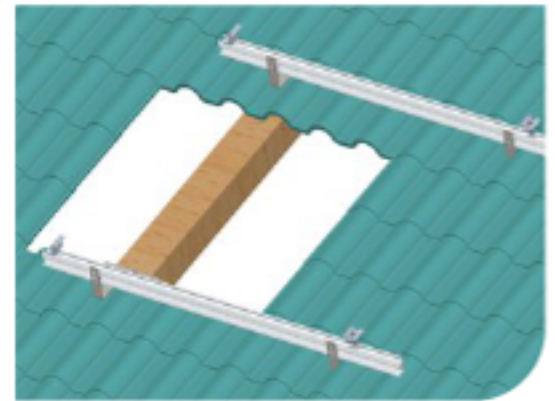
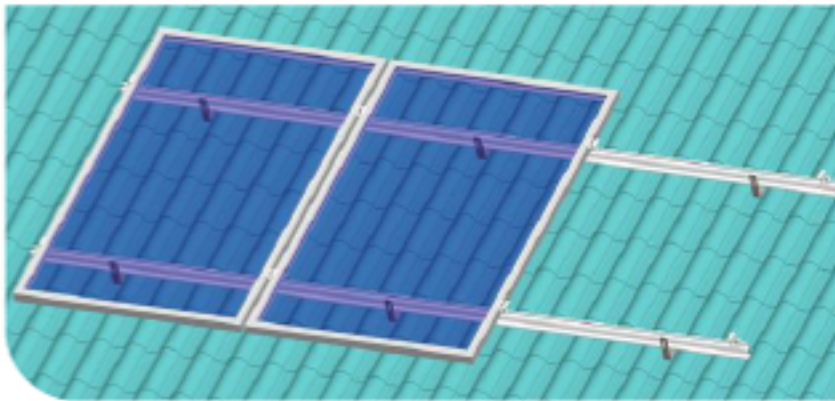


Tighten the wrench

Rail splice for rails connection with M6.3×25 self-tapping screw

STEP 3 Fixing solar panels.

Use the end clamp for fixing the first and last panel on the rail, mid clamps are used for connection between 2 panels.



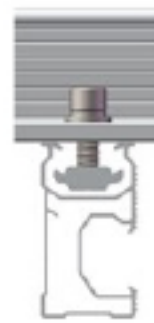
ART SIGN D nut series rail installation tips.



Position the one side of D nut into rail slot.



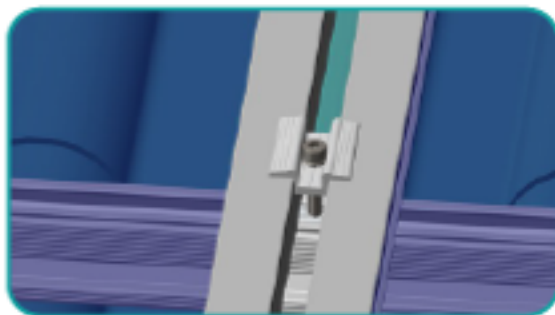
Put another side of D nut into rail slot.



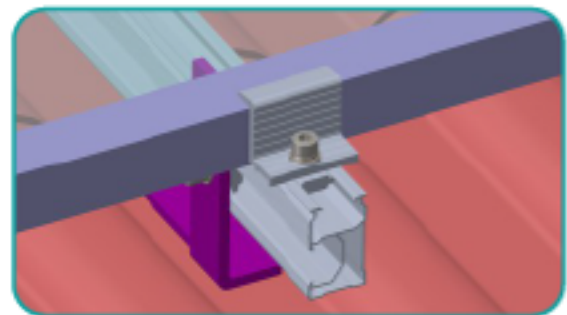
Fasten the bolt.



Fasten the bolt firmly.



① Insert the D nut of mid clamp into D series rail slot, fasten the allen bolt M8*25 firmly.



② Fix the first and last solar panel on the rail with end clamp.