

XG-S220 Electromagnetic Lock Specification

SPECIFICATION

Customer: _____

Part No. : _____

Model No. : _____

Approved Signature	
Checked by:	Date:
Approved by:	Date:

Please return one signed copy, thanks!

Supplier: SUZHOU DEWO SMART SYSTEM		
Approved by	Checked by	Issued by

Directory

1. Appearance description
2. Parameters and installation dimensions

XG-S220 electromagnetic lock

1. Scope of application and precautions

The electromagnetic lock is suitable for the intelligent storage cabinet group such as logistics and fresh food refrigerating delivery cabinet group, supermarket goods storage cabinet group, residential district letter box.

The size of the mounting position between the lock body and the lock hook should be within the requirements of the drawings.

If it is not used in accordance with the specifications or amendments, no warranty is provided.

If there is any doubt about this specification, the technical development department of Suzhou Dewo Smart System Co., Ltd. is responsible for the explanation.

Within the scope of this specification, changes to parts or manufacturing processes may occur to improve product performance.



2. Parameter

XG-S220 Electromagnetic lock parameter	
Dimension:	12.5mm*67mm*73mm
Way of working:	The door is closed (power off) to lock, and the power on (12V) instantly triggers the unlocking mode.
Emergency unlocking:	The lock body is equipped with an emergency unlocking method, and the cabinet can be locked without damaging the cabinet in an emergency. If according to the mechanical key, it can also be unlocked externally with the key, the operation is simple and convenient;
Energy saving:	The power-on time at the moment of unlocking is 200ms-300ms, usually when the door is closed and locked, it does not consume power and the voltage is 12V;
Life test:	Under a load of 5kg, the unlocking voltage is 10.5V, and the aging switch is more than 100,000 times
Applicability:	No front and back design, all sizes of cabinets for left, right, upper and lower door opening directions can be used.
Safety:	Sensitive, shockproof, anti-mite, anti-rust.
Line order:	The double red wires are the electromagnet power wires, and the white and green wires are the micro switch signal wires.
Electrical parameter list:	
Voltage: 12V	
Current: 2A±0.2A	
Resistance: 5.5Ω±0.5Ω	
Electromagnet life: more than 1 million times	
Key component inspection standards:	
Part name	Materials used and related technical requirements
mandrel	Galvanized iron is used, the salt spray test is required to reach 48H or more, and the relevant compression stroke meets the test requirements
Electromagnet shaft core and electromagnet mounting plate pressure riveting shaft	Using DT4 electrical soft iron material, the surface is electroplated with environmentally friendly blue zinc, and the salt spray test is required to reach above 48H
Electromagnet plastic shaft	Using PA66-GF30% flame-retardant material, it is required to store at high temperature +80° and low temperature -30° for 24 hours; the product has no deformation or cracking;
Lock hook torsion spring, lock hook pull rod tower spring and top rod compression spring	Using stainless steel 304 material, the salt spray test is required to reach 72H or more, and the related torsion and extension tension can meet the test requirements
The bottom cover of the lock and the upper cover of the lock	Using cold-rolled sheet material, the surface is electroplated with environmentally friendly white zinc, and the salt spray test is required to reach 48H or more;

Limit switch	The micro switch requires a life test of more than 500,000 times
Coil insulation tape	It is required to withstand a temperature of 100°, and the tape can be melted, but it must not burn.

Assembly and related parameters;

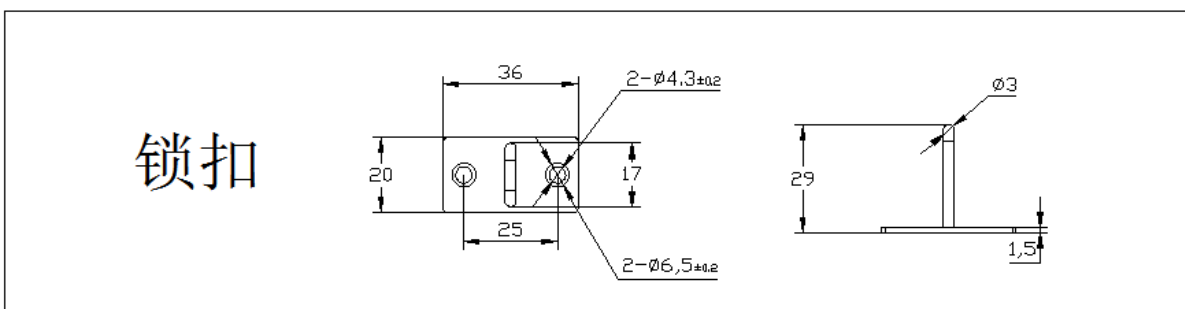
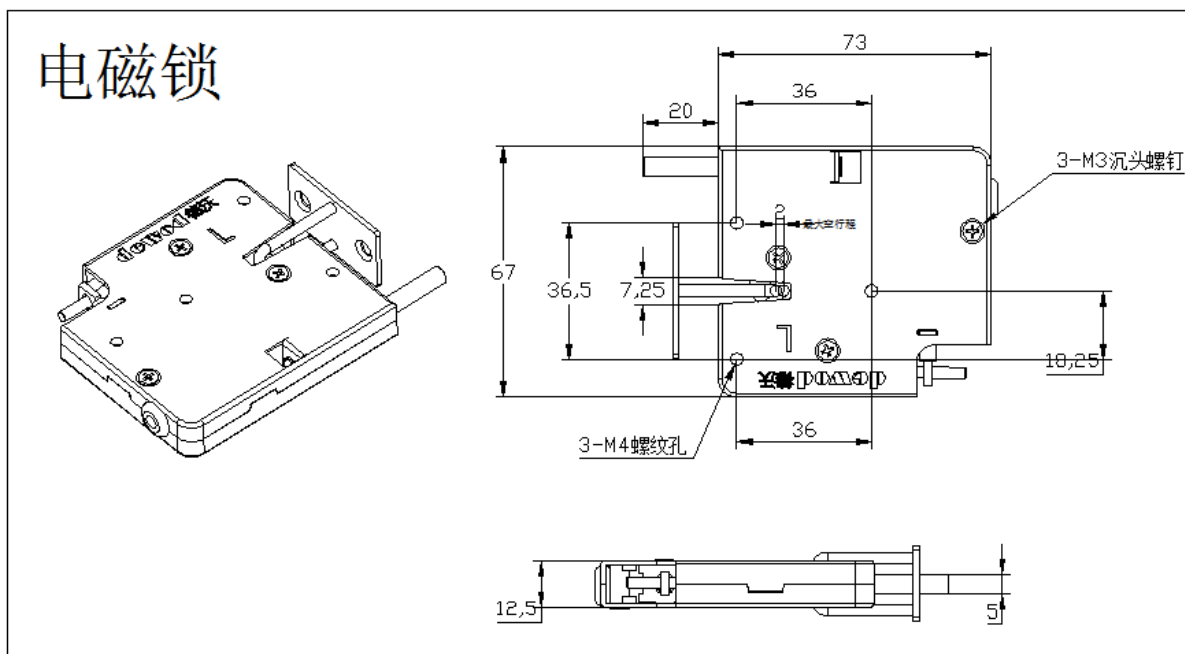
A. Use SMH250-4P standard wire connection, the exposed length of the lead is not less than 150mm (including terminal); (The length of the wire and various types of plugs can be customized according to customer needs)

B. The micro switch is normally closed when the door is closed; (can be customized according to customer requirements)

C. Working temperature -30° to +80°, relative humidity 20%-80%;

D. Storage temperature: -30° to +80°, relative humidity 20%-80%;

XG-S220 安装尺寸



Remarks: The above unmarked dimensions 1mm-20mm tolerance is $\pm 0.2\text{mm}$; 21mm-50mm tolerance is $\pm 0.3\text{mm}$; 51mm-100mm tolerance is $\pm 0.5\text{mm}$

5. Overall requirements for electromagnetic locks;

A. The surface of the electromagnetic lock should be clean, with good gloss, no bubbles, scratches, abrasions and other defects, the lead-out should be flat, the insulating sleeve should be complete, and no cracks;

B. The lead wire and lead terminal of the electromagnetic lock should be firm and reliable, and there should be no looseness or detachment, and the insulating sleeve should be well matched with it;

C. The welding of the travel switch and the electromagnet should be even and full, and there should be no phenomena such as virtual welding and continuous tin;

D. After the electromagnetic lock is assembled, the functional parts require flexible rotation, and there is no failure phenomenon such as jamming;

E. After the screws of the electromagnetic lock cover plate are locked, there must be no unfastened screws or slip teeth;

F. For qualified products, the production date should be stamped on the front of the product. The stamp should be clear and clear, and there should be no ambiguity;