

KLEANLAND[®]

Electrostatic Air Filter Manufacturer Since 1992

205pcs
National
Patents

86
Exported to
86 countries

Standard
Local standard
setter



Brand Owner: KLEAN Environmental Technology Co., Ltd

Add.: Building 4, Leagure Science Park of RITS, No.99, Taoyuan East Road, Shishan Town,
Nanhai District, Foshan City, Guangdong, China.

Manufacturer: KLEAN Environmental Equipment Co., Ltd

Add.: Building 1, Building 2, No. 7, Hongxing Road, Yayao Town, Heshan City, Jiangmen,
Guangdong, China.

+86-18923161984 sales@klean-esp.com www.klean-esp.com

Hood with Ecology Unit

Steam Auto-clean, 98% Purification Efficiency,
Gesture Control, Comprehensive Exterior Evolution

CONTENTS

03 About KLEAN

- New flexible intelligent workshop ----- 03
- History of the Development of Hood with Ecology Unit ----- 04
- KLEAN's Events: From 1992 to present----- 05
- Founder of KLEAN You Jin /Corporate Culture----- 07
- Excellent Quality ----- 09
- 205 Valid Patents -----10
- Honor and Responsibility ----- 11

13 Core Technology

- Gesture Control/ Laser Welding Techniques/
Surface Finishing Techniques----- 13
- Multi-Functional Evolution ----- 14
- Dual Output KLEAN Digital HV Power Pack: Safe and Stable ---- 15
- 98% Filtration Efficiency/ SUS304 Hybrid Filte ----- 16
- Steam Auto-Clean (Optional) ----- 17

19 Hood with Ecology Unit

- 90% High Emission Series -----19
- 95% Low Emission Series -----21
- 98% Low Emission Series -----23
- 98% Stir-fry -----25
- 98% Barbecue Series -----27
- 85% Mist Blasting Wheel Series -----29
- Island Series -----31
- Flexible Installation: Fit Various Scenes -----33

35 KLEAN Service

- K-CLOUD SERVICE ----- 35
- Cases: School/Government/Organization Canteen ----- 37
- Cases: Commercial Complex ----- 39
- Cases: Shopping Centers/Food Courts/Chain Restaurants -- 41



The rendering depicts the new headquarters of Klean's in Songgang, currently under construction, with an anticipated completion and acceptance by 2026.

New flexible intelligent workshop

120 acres of large-scale electrostatic precipitator production base

31 Years Industry Experience

5000m² R&D Center

120 acres production base

200,000 purification equipment production capacity

205 pcs National Patents

500 Employees

Electrostatic Air Filter Manufacturer Since 1992

The data deadline is February 2024



History of the Development of Hood with Ecology Unit

History of the Development of Hood with Ecology Unit

In 1992, founder You Jin developed an electrostatic range hood

1994 Nanhai Fishing Village, Tianhe Sports Center, Guangzhou.

1997 Shenzhen Bao'an Mingdian Cafe

1993 The smoke hood integrated oil fume purification equipment.

1997 HK Ocean Restaurant, China

History of Power Supply Development

Analog Power Supply - Intelligent Digital Power Supply - IOT Intelligent Power Supply

1992 In 1992, a closed-loop control technology for power supply was introduced, consisting of a solid frequency high-voltage transformer and a thyristor chopper voltage regulation. It has arc extinguishing and constant current functions, as well as protection functions such as short circuit, open circuit, and overload;

2003 In 2003, high-frequency inverter switching high-voltage power supply was launched, which has a small size and high energy utilization efficiency;

2012 In 2012, we launched a chip controlled digital high-frequency power supply and oil fume purifier operation software and obtained a copyright certificate;

2013 In 2013, digital display technology was introduced, and the power supply has multiple operation mode level fault display functions;

2014 In 2014, the solid-state single power supply reached 200mA/60kV, achieving IoT for oil fume purifiers;

2016 In 2016, the multi power supply self coordinated synchronous operation technology was launched, achieving a single group of matrix power supply output>1000ma/50kV; The mobile networking app has been launched;

2020 Launching IOT intelligent power supply in 2020

Historical Version of the Filter Cell

Hexagonal Honeycomb Filter Cell/Cylindrical Honeycomb Filter Cell/Double Tubular Filter Cell/Hybrid Tube-Plate Filter Cell

1993 Hexagonal Honeycomb Filter Cell | 1st Generation

1997 Cylindrical Honeycomb Filter Cell | 2nd Generation

2008 KLEAN Tubular Filter Cell | 3th Generation

2013 Linear Cylinder Honeycomb Filter Cell | 4th Generation

2018 Multi-Cylinder Cylindrical Honeycomb Filter Cell | 5th Generation

2019 Multi-Stage Cylindrical Honeycomb Filter Cell | 6th Generation

2021 Hybrid Tube-Plate Filter Cell | 7th Generation

KLEAN's Milestones

1992 to Date

1992

In 1992, founder You Jin developed an electrostatic range hood and established the "Blue Sky Environmental Protection" equipment factory.

1993

In 1993, Blue Sky Environmental Protection's first all-in-one hood electrostatic filter was born.

1994

In 1994, Foshan Blue Sky Environmental Protection Electrical Equipment Factory was registered and established in Chancheng District, Foshan City.

2002

In 2002, Kelantech Environmental Products Co., Ltd. was established.

2004

In 2004, the electrostatic range hood series products passed the European CE safety certification and began to be sold in the European region.

2007

In 2007, the Environmental Protection Technology and Equipment Engineering Technology Research and Development Center was established in Chancheng District, Foshan City.

2011

In 2011, led the drafting of the Guangdong Provincial Local Standard for Electrostatic Catering Fume Purification Equipment. Become a national high-tech enterprise. Received the title of "Guangdong Province Environmental Protection Backbone Enterprise".

2013

In 2013, the stock reform was successful and renamed as Foshan Kelan Environmental Equipment Co., Ltd. Establish the Foshan Oil Smoke Waste Gas Purification and Recycling Engineering Technology Research and Development Center.

2014

In 2014, the new headquarters R&D center and Jiangmen Heshan production base were officially put into operation.

2015

In 2015, it became a key supporting unit of the 2016-2020 Eagle Plan of the Nanhai District People's Government of Foshan City.

2017

In 2017, some models of products passed the US UL867 certification. Received the honorary title of "Enterprise with Tax Payment Exceeding 10 million yuan in 2016" in Nanhai District, Foshan City.

2018

In 2018, awarded the honor of "Leading Enterprise in Segmented Industries" by the Office of the Leading Group for Quality Strong City Work in Foshan City.

2019

In 2019, it was awarded the title of "Leading Enterprise in Environmental Services" in the first Excellent Environmental Protection Enterprise of the South China Cluster of National Environmental Services Industry. Listed in the "First Batch of Foshan Key Intellectual Property Protection List" by the Foshan Municipal Intellectual Property Bureau. Becoming one of the first member units of the National Environmental Protection Equipment/Product Quality Inspection Center Technical Alliance.

2020

In 2020, it became a key supported enterprise under the "Tengyun Plan" in Nanhai District and was awarded the title of "Invisible Champion" in the manufacturing industry of Foshan the following year.

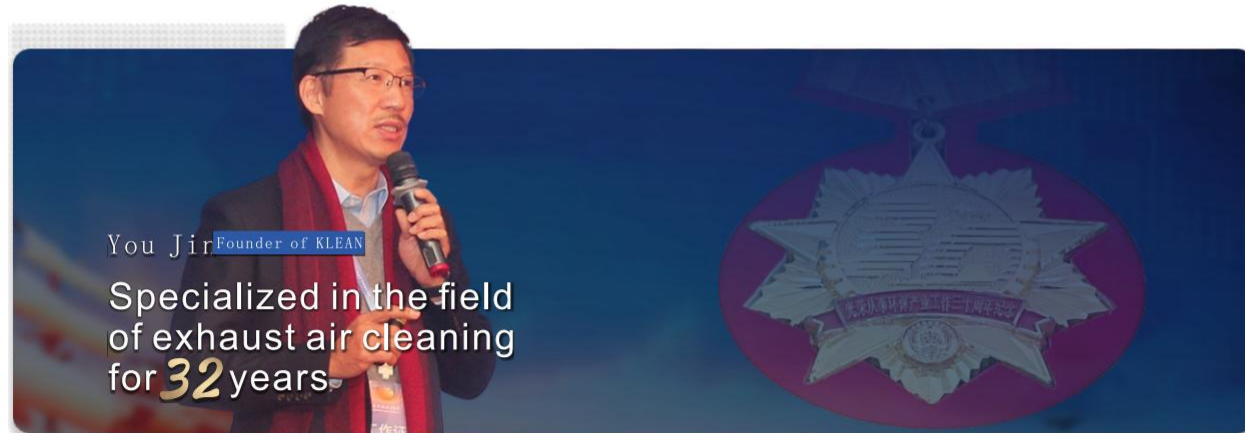
2022

In 2022, selected as a "specialized, refined, unique, and new" enterprise in Foshan City. The company was awarded the honorary title of "leader" exemplary organization of enterprise standard in 2021. Participate in the formulation of atmospheric pollutant emission standards for the catering industry in Guangdong Province.

2023

In 2023, the company was awarded the title of "13th Five Year Plan" Guangdong Province Environmental Protection Industry Backbone Enterprise. The second factory area of the company's Jiangmen production base was fully put into operation, and the foundation of the Songgang new headquarters project was laid in the same year.

Founder of KLEAN You Jin: Developed electrostatic range hood in 1992



You Jin Founder of KLEAN
Specialized in the field
of exhaust air cleaning
for **32** years



1985

In 1985, graduated from South China University of Technology, majoring in Radio Technology.

1989

In 1989, engaged in electrostatic precipitator technology.

1992

In 1992, developed electrostatic commercial kitchen hoods, changing the traditional inefficient way of removing oil smoke such as water film and filter screen.

Personal Honors

The Third Session of Foshan City Innovation Leading Talent

Star of dual innovation, Guangdong Province

Excellent Science and Technology Specialist of Nanhai District, Foshan City

Intelligent Star in Foshan City High-tech Zone

High-level Talents of Nanhai District, Foshan City (Grade II)

Third-class Prize of Science and Technology Progress of Nanhai District, Foshan City

"Twelfth Five-Year Plan" outstanding entrepreneur of environmental protection industry in Guangdong Province

Thirty years of honourable engagement in the environmental protection industry



Attend the 2019 National Seminar on the Development of Pollution Prevention Technologies for the Catering Industry



Attend the 5th Guangdong Environmental Protection Industry High Quality Development Conference in 2023

Corporate Culture



Our Mission and Beyond:

Aiming to lead the world in air cleaning solutions, we always look forward to new changes to create a greener future with "KLEANer" technology.

Business policy:

Scientific and technological innovation, quality refinement, integrity first, win-win development.

Employment concept:

Unity and integrity, learning and innovation, responsibility, win in action

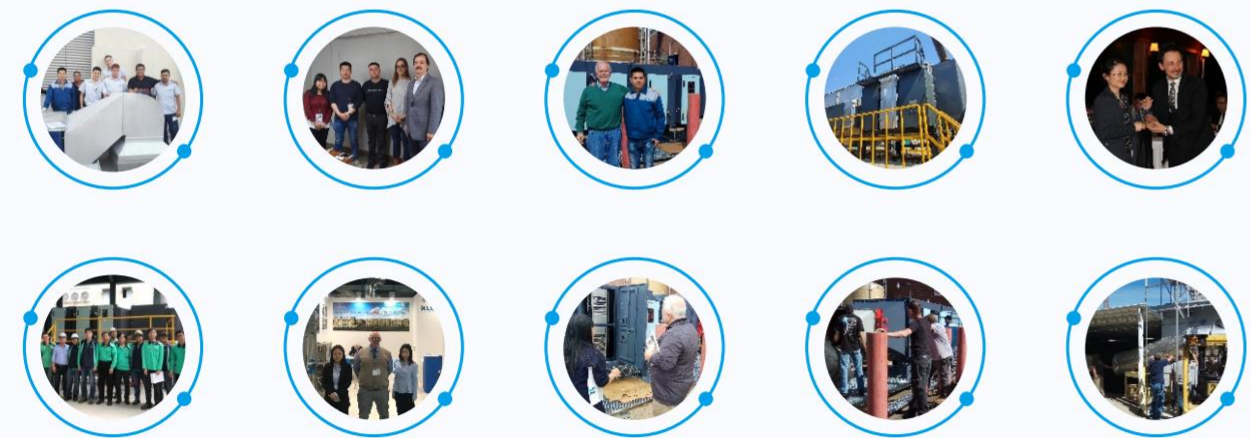
Staff Training System

Training the staff for the company's culture, products, customers, industry, management, behavioral qualities and other skills, which will provide a constant source of motivation for the company's development.



Excellent Quality

Products exported to over 80 countries and regions



205 valid patents

Chinese National Certification - UL Certification - CE Certification

205 valid patents - 40 patents for inventions
Chinese National Certification - UL Certification - CE Certification



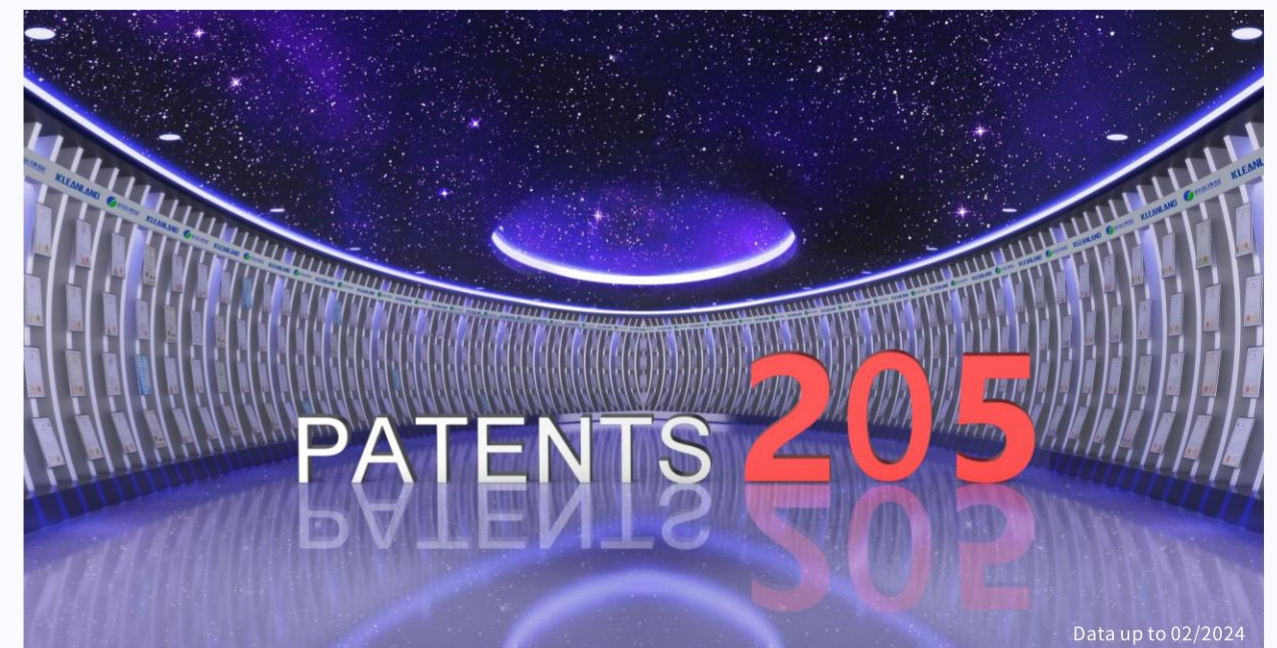
CQC China Quality Certification Centre Environmental Product Certification

CE Certification

Chinese National Certification

UL Certification (Q series models)

National Environmental Protection Equipment Quality Supervision and Inspection Centre



Data up to 02/2024

Honor and Responsibility: Promoting the Common Development of the Industry

Honor and Awards

KLEAN is a National high-tech enterprise /
Foshan City "Zhuan, Jing, Te, Xin" Enterprise (Specialized, Refinement, Differential, Innovation) /
Foshan City Leading companies in the segment
Hidden Champion of Foshan's Manufacturing Industry /
Guangdong Environmental Protection Industry Backbone Enterprise /
High Quality Manufacturing Benchmark of Nanhai District, Foshan City /
Intellectual Property Demonstration Enterprise of Guangdong Province /
Nanhai District "Cloud Riding /Soaring Plan" key support enterprises /
First batch of key intellectual property protection enterprises of Foshan City /
Patent Advantageous Enterprises in Environmental Protection Equipment Industry of Guangdong Province
National Hidden Champion of Nanhai's Manufacturing Industry /
Southern region Environmental Services Head Enterprise



Responsibility for industry affiliation

In 2013, together with Foshan Science and Technology Bureau, Foshan Development and Reform Bureau and Bureau of Economy and Information Technology of Foshan City, Klean jointly set the "Foshan City Oily Fumes Pollution Emission Purification and Recycling Engineering Technology Research and Development Center" to promote the development of company and the industry. In addition, KLEAN participated in the formulation of a number of national standards, provincial standards, and group standards:

National Standards

Participated in the formulation of the national standard of "High-Intensity Low-Pressure Ultraviolet Germicidal Lamps".

New national standard "The Emission of Oil Smoke Pollution from Catering Industry"

Provincial Standards

Lead the formulation of Guangdong provincial local standards "Electrostatic Catering Fume Purification Equipment"

Jiangsu Province "Catering Industry Air Pollutant Emission Standards" solicit opinions

Participation in the formulation of "Guangdong Provincial Local Standard on Air Pollution Emission Standards for Catering Industry"

Group standards

Participate the formulating of the group standard "Requirements for the Operation Service Capability of Environmental Protection Facility Operation Units".

Participate the formulating of the group standard "Guidelines for Data Transmission of the Process (Working Condition) Monitoring System for Exhaust Gas Emissions from the Catering Industry".

Participate the formulating of the group standard of "High-voltage Power Supply for Catering Oil Smoke Purifiers".

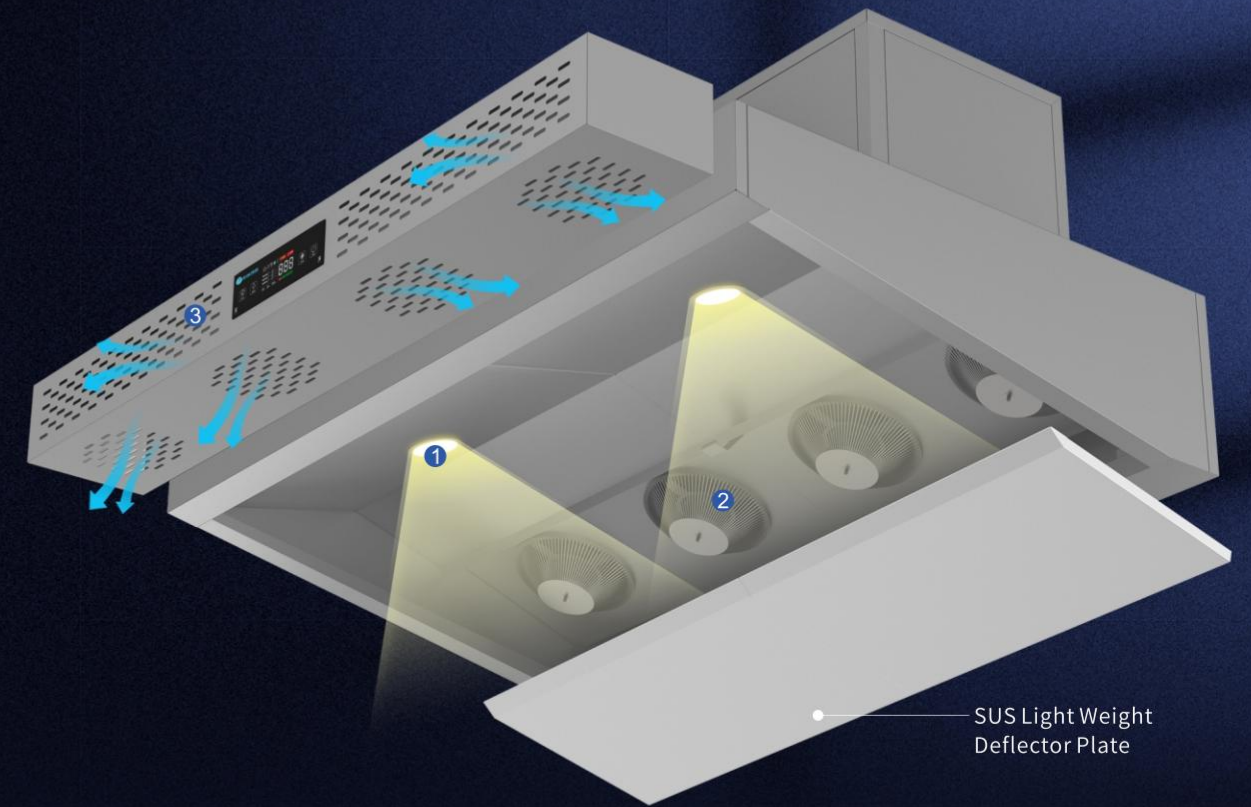
Participate the formulating of the group standards "Efficient and Stable Catering Fume Purification System, Chapter 2 Technical Requirements and Testing Specifications for Catering Fumes Purification Equipment"

"Catering Industry Electrostatic Oil Smoke Purification Equipment Operation and Maintenance Service Technical Specifications" group standard advice-seeking unit

KLEAN has always adhered to the "science and technology create a green sky" mission, as well as "scientific and technological innovation, quality and refinement, integrity first, win-win development" business policy, and strive to purify the living environment for mankind.

Intelligent Upgrade Gesture-Controlled Smart

With 31 years of experience, we understand user needs on-site better



Gesture-Controlled Smart

Gesture-Activated Auto Power Control, Touch-Free Operation, One-Touch Start.



Laser Welding Techniques

Laser welding techniques are integrated into the manufacturing process to ensure distortion free weld profile with desirable mechanical properties.



Surface Finishing Techniques

A brushed finish is added to the unit with custom-made machines, making it a fine addition to the collection of your five-star appliances.



1. Meticulously Chosen LED Illumination

Aluminum alloy lamp base and tempered glass lamp cover protect the illuminator against hostile working conditions, such as high content of moisture and grease and high temperature.



2. Mist Blasting Wheel (Optional)

High-speed rotating mechanical separation for high-efficiency interception of most large oil droplets.



3. Fresh Air System (Optional)

Front/Bottom Air Outlet with Adjustable Airflow

SUS Light Weight Deflector Plate

Dual Output KLEAN Intelligent Digital HV Power Pack

Arc will be suppressed within 0.0001 second
 Patented Sampling of Secondary Voltage and Current, Voltage and Current put under Closed-Loop Control

8 Protections

- VFD Power Output Capability
- Soft Start-Up
- Constant I Limited U Output
- Arc Extinction
- Open Circuit Protection
- Short Circuit Protection
- Multiple OverTemp Protections
- Overload Protection

KLEANLAND K3 HVMCU V3.9 Operating System
 Manage ESP with a PC or a smart phone

- PC Add on Scanner Interfaces
- Phone Add on Scanner Interfaces
- Data Sampling and Storage
- High Precision
- Secondary Current Setting
- Multiple Operating Modes

98% Maximum Filtration Efficiency Hybrid Tube-Plate ESP filter

Electrostatic Filtration Principle
 Pre-filtration + Stage 1 Filtration + Stage 2 Filtration

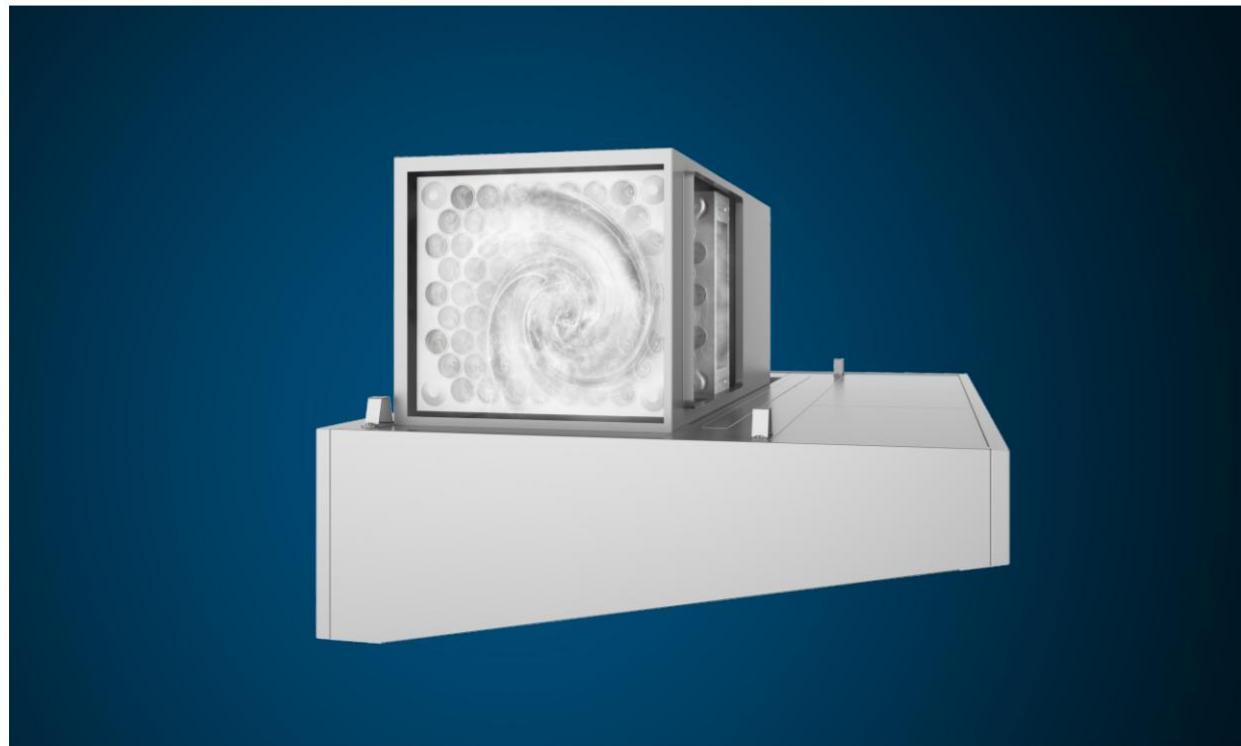
Perforated Pre-filter Stage 1 Filtration Stage 2 Filtration

High efficiency and long cleaning cycle

- Strong dirt immunity Long cleaning cycle**
 25MM Wide pole distance, water vapor and smoke proof, more dirt resistant, longer cleaning cycle (According to working conditions)
- SUS Tubular ESP Filter**
 Typical KLEAN Tubular ESP Filter design with increased collection area. Ionizers are in the axial center of the collectors, resulting in better discharging uniformity and higher filter cell intensity.
- Highly efficient removal of oil, grease and smoke particles**
 Energized by a higher high voltage, KLEAN tubular ESP filter delivers highly efficient removal of oil, grease and smoke particles.
- Reduce particle sneaking/reentrainment**
 Energized by a lower high voltage KLEAN plate filter offers extra collection area that helps to reduce particle sneaking/reentrainment.

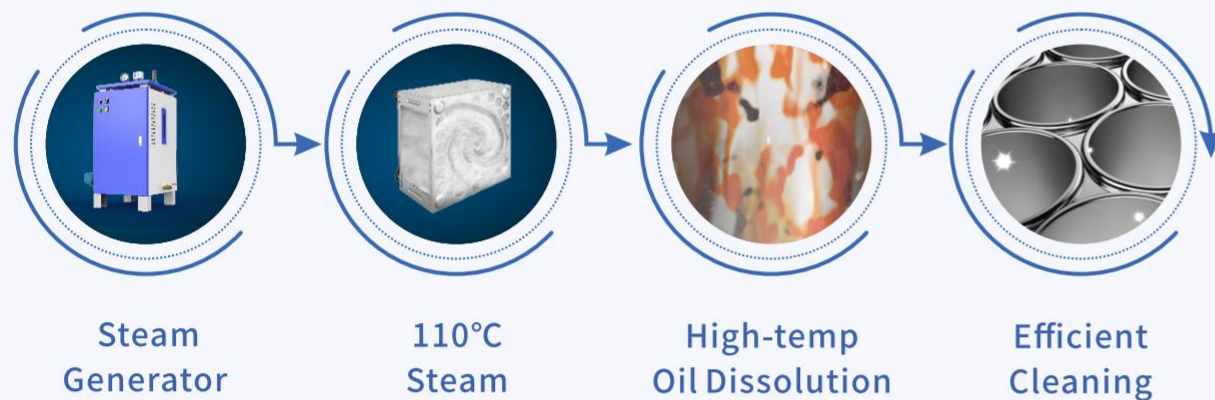
Automatic steam cleaning(Optional) No need for manual cleaning for over a year

How It Works



Working Principles

High-temperature and high-pressure steam dissolves oil in filter cells



Steam Auto-Clean



Model	BSN-3KW(2P)	BSN-9KW(6P)
Dimension LxWxH (mm)	370x590x230	
Cleaning method	24-hour Appointment/ Regular cleaning	
Number of Cleaning/Unit	2	
Time (min)	60	
Display	touch screen	
Power Supply	1P+N/PE AC220/50HZ	3P+N+PE AC380/50HZ
Power(KW)	3	9

Note: 1. Please refer to the manual for the factory settings of cleaning time and frequency;
2. Each steam generator can be connected to up to 6 devices for filter cell cleaning in turns.

90% High Emission Series

Maximum Filtration Efficiency for High Level Discharge & Light Load Cooking



1100 Technical Specifications

Model	Airflow (m³/h)	Pressure Drop(Pa)	Outlet Dimension(mm)	Dimension LxWxH(mm)	Power (W)	Steam Auto-clean
BS-266-16J	3200	100	300x400	1600x1100x757(Back976)	1300	Optional
BS-266-20J	4000		Selectable Front/Top/Back Discharge	2000x1100x757(Back976)	1300	
BS-266-24J	4800		2400x1100x757(Back976)	2000		

Model	Airflow (m³/h)	Pressure Drop(Pa)	Outlet Dimension(mm)	Dimension LxWxH(mm)	Power (W)	Steam Auto-clean
BS-266-16J+UV	3200	115	300x400	1600x1100x757(Back976)	1400	Optional
BS-266-20J+UV	4000		Selectable Front/Top/Back Discharge	2000x1100x757(Back976)	1400	
BS-266-24J+UV	4800		2400x1100x757(Back976)	2100		

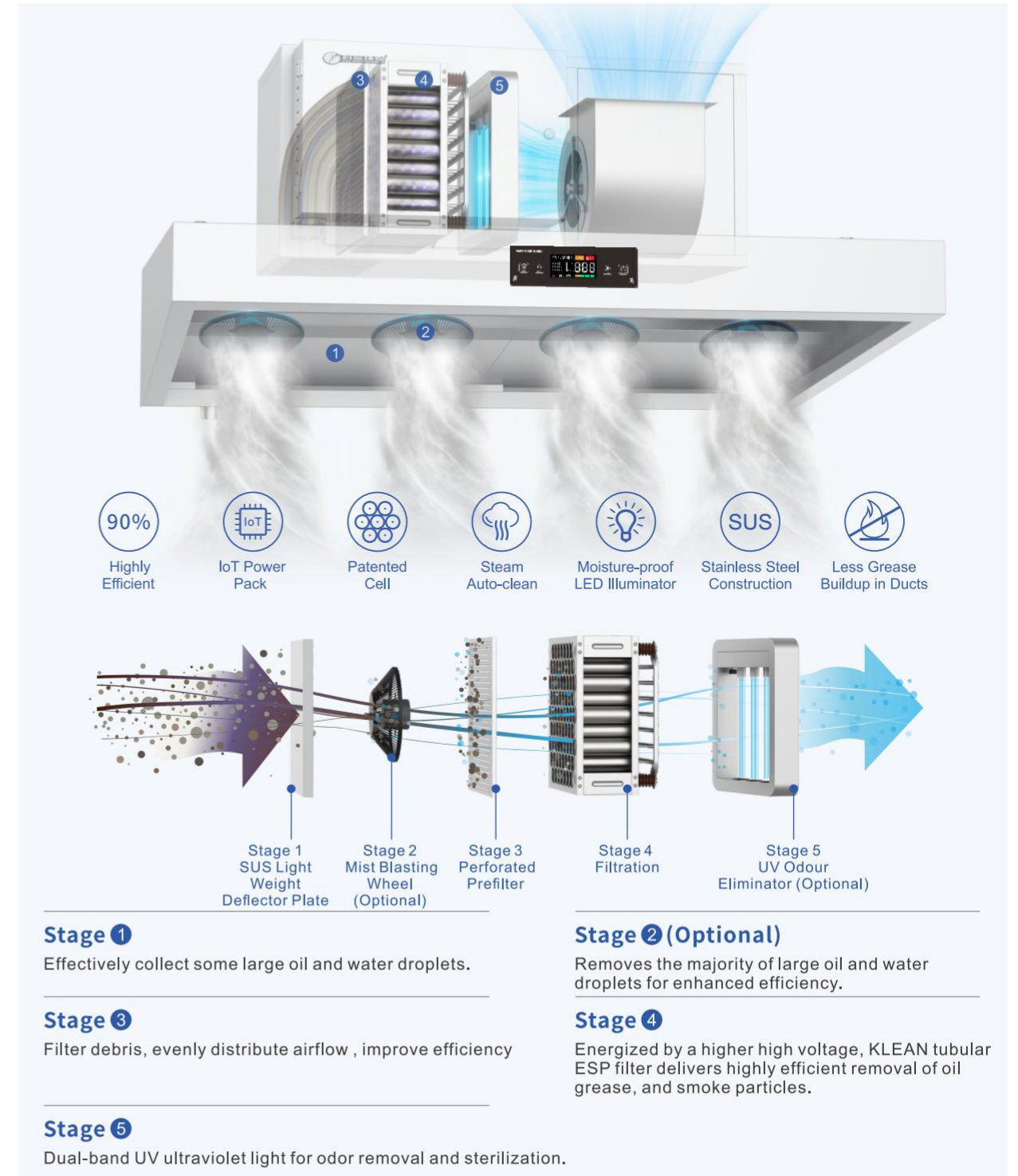
1300 Technical Specifications

Model	Airflow (m³/h)	Pressure Drop(Pa)	Outlet Dimension(mm)	Dimension LxWxH(mm)	Power (W)	Steam Auto-clean
BS-266-16JP	3200	100	300x400	1600x1300x757(Back976)	1300	Optional
BS-266-20JP	4000		Selectable Front/Top/Back Discharge	2000x1300x757(Back976)	1300	
BS-266-24JP	4800		2400x1300x757(Back976)	2000		

Model	Airflow (m³/h)	Pressure Drop(Pa)	Outlet Dimension(mm)	Dimension LxWxH(mm)	Power (W)	Steam Auto-clean
BS-266-16JP+UV	3200	115	300x400	1600x1300x757(Back976)	1400	Optional
BS-266-20JP+UV	4000		Selectable Front/Top/Back Discharge	2000x1300x757(Back976)	1400	
BS-266-24JP+UV	4800		2400x1300x757(Back976)	2100		

Note: 1. Specifications are listed for reference purpose only and are subject to change without prior notice.
 2. The power supplies are all 3P+N+PE AC380/50HZ; 3. Optional components: Steam Auto-clean/Fresh Air System/Mist Blasting Wheel;
 4. All models are customizable with no side plate or single-sided plate.
 5. If fan is required to be placed on the left or side discharge required, please inform before placing an order.

5-Stage Purification



95% Low Emission Series

Maximum Filtration Efficiency for Low Level Discharge & Medium Load Cooking



1100 Technical Specifications

Model	Airflow (m³/h)	Pressure Drop(Pa)	Outlet Dimension(mm)	Dimension LxWxH(mm)	Power (W)	Steam Auto-clean
BS-266-16T	3200	130	300x400	1600x1100x757(Back976)	1600	Optional
BS-266-20T	4000		Selectable Front/Top/Back Discharge	2000x1100x757(Back976)	1600	
BS-266-24T	4800		2400x1100x757(Back976)	2300		

Model	Airflow (m³/h)	Pressure Drop(Pa)	Outlet Dimension(mm)	Dimension LxWxH(mm)	Power (W)	Steam Auto-clean
BS-266-20T+UV	4000	134	300x400	2000x1100x757(Back976)	1700	Optional
BS-266-24T+UV	4800		Selectable Front/Top/Back Discharge	2400x1100x757(Back976)	2400	

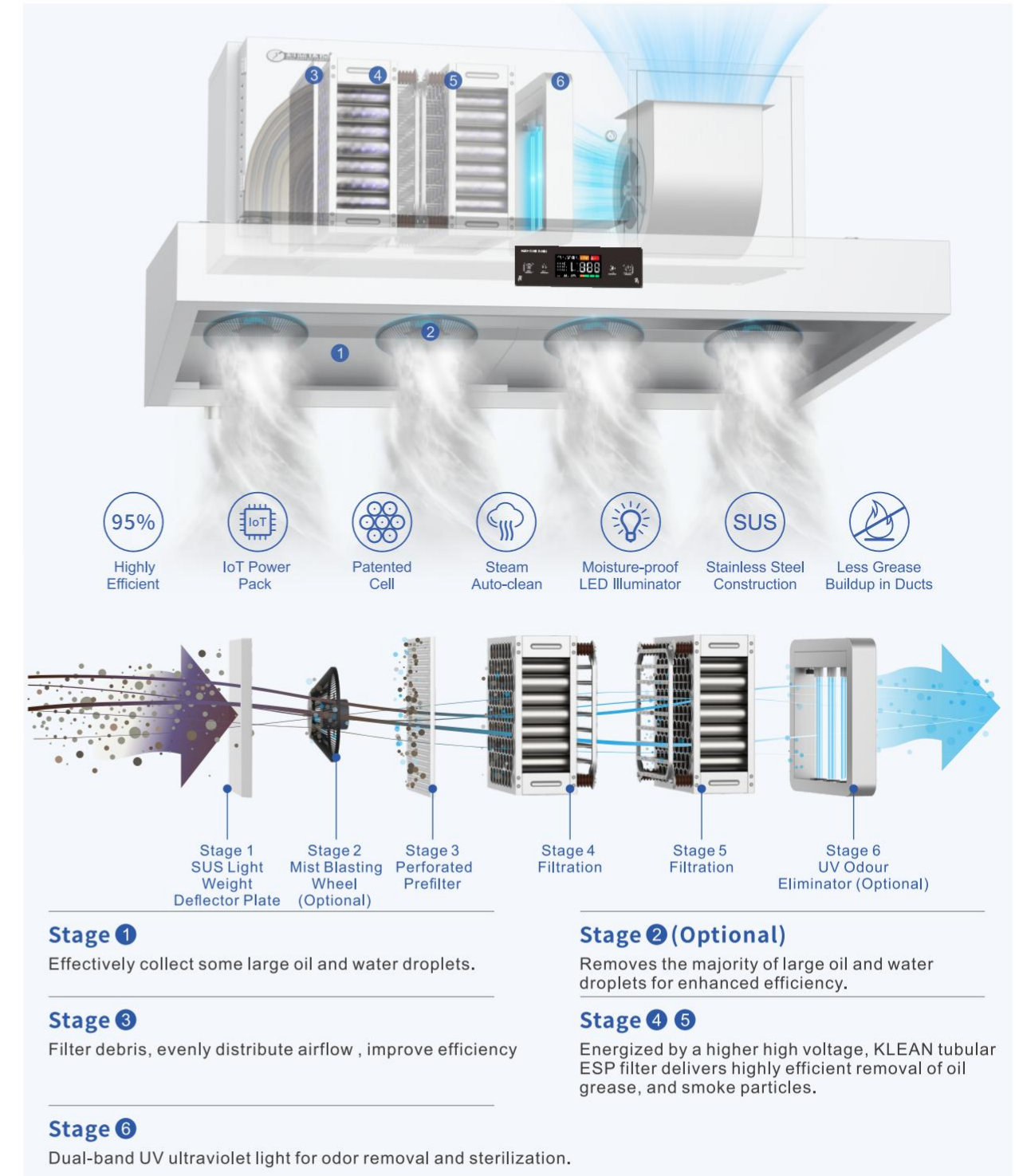
1300 Technical Specifications

Model	Airflow (m³/h)	Pressure Drop(Pa)	Outlet Dimension(mm)	Dimension LxWxH(mm)	Power (W)	Steam Auto-clean
BS-266-16TP	3200	130	300x400	1600x1300x757(Back976)	1600	Optional
BS-266-20TP	4000		Selectable Front/Top/Back Discharge	2000x1300x757(Back976)	1600	
BS-266-24TP	4800		2400x1300x757(Back976)	2300		

Model	Airflow (m³/h)	Pressure Drop(Pa)	Outlet Dimension(mm)	Dimension LxWxH(mm)	Power (W)	Steam Auto-clean
BS-266-20TP+UV	4000	134	300x400	2000x1300x757(Back976)	1700	Optional
BS-266-24TP+UV	4800		Selectable Front/Top/Back Discharge	2400x1300x757(Back976)	2400	

Note: 1. Specifications are listed for reference purpose only and are subject to change without prior notice.
 2. The power supplies are all 3P+N+PE AC380/50HZ; 3. Optional components: Steam Auto-clean/Fresh Air System/Mist Blasting Wheel;
 4. All models are customizable with no side plate or single-sided plate.
 5. If fan is required to be placed on the left or side discharge required, please inform before placing an order.

6-Stage Purification



98% Low Emission Series

Maximum Filtration Efficiency for Low Level Discharge & Medium Load Cooking



1100 Technical Specifications

Model	Airflow (m³/h)	Pressure Drop(Pa)	Outlet Dimension(mm)	Dimension LxWxH(mm)	Power (W)	Power Supply
BS-266-16D	3200	130	300x400	1600x1100x757(Back976)	1300	3P+N+PE
BS-266-20D	4000		Selectable Front/Top/Back Discharge	2000x1100x757(Back976)	1300	AC380
BS-266-24D	4800		2400x1100x757(Back976)	2000	50HZ	

Model	Airflow (m³/h)	Pressure Drop(Pa)	Outlet Dimension(mm)	Dimension LxWxH(mm)	Power (W)	Power Supply
BS-266-20U	4000	145	300x400	2000x1100x757(Back976)	1400	3P+N+PE
BS-266-24U	4800		Selectable Front/Top/Back Discharge	2400x1100x757(Back976)	2100	AC380 50HZ

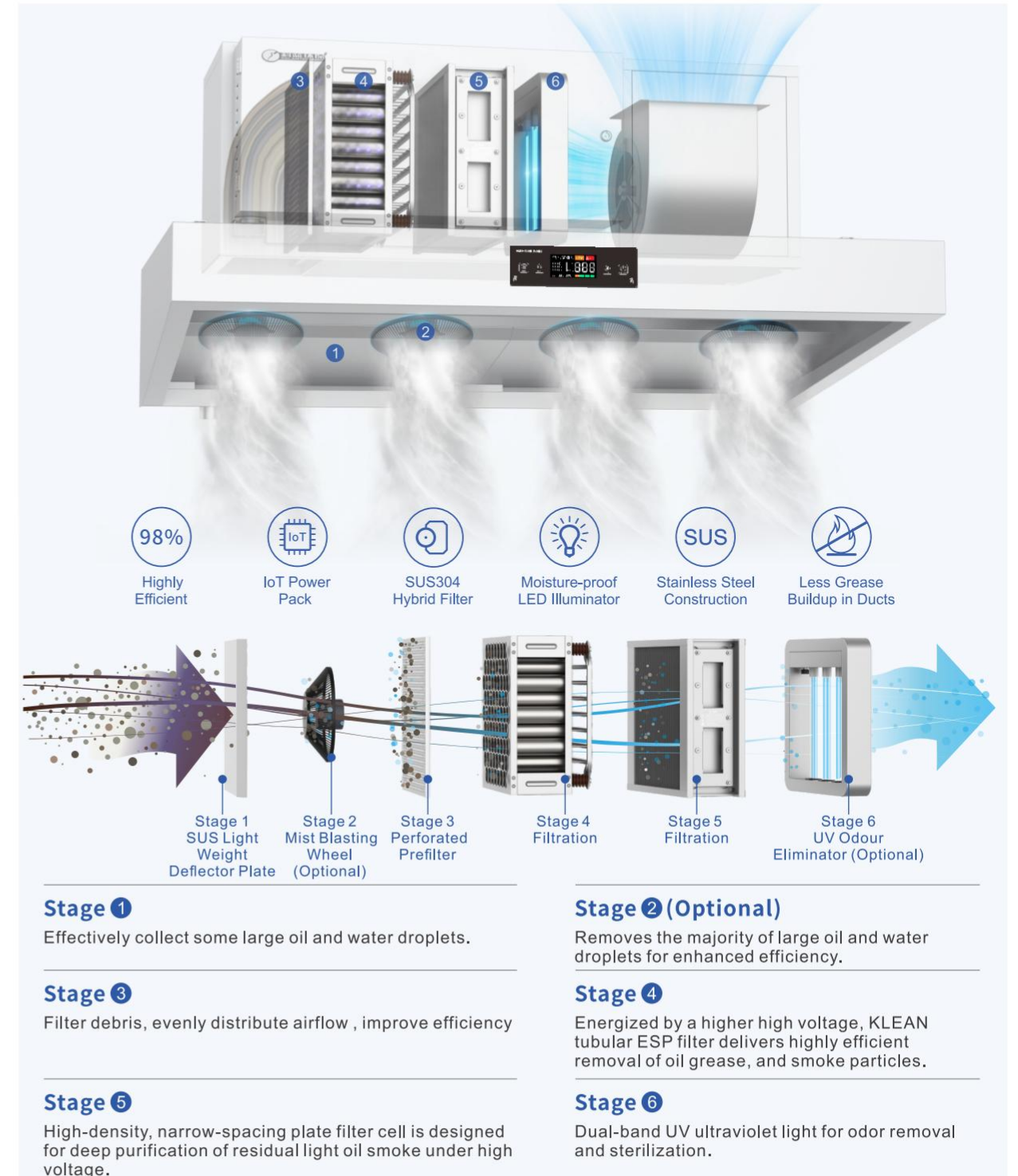
1300 Technical Specifications

Model	Airflow (m³/h)	Pressure Drop(Pa)	Outlet Dimension(mm)	Dimension LxWxH(mm)	Power (W)	Power Supply
BS-266-16DP	3200	130	300x400	1600x1300x757(Back976)	1300	3P+N+PE
BS-266-20DP	4000		Selectable Front/Top/Back Discharge	2000x1300x757(Back976)	1300	AC380
BS-266-24DP	4800		2400x1300x757(Back976)	2000	50HZ	

Model	Airflow (m³/h)	Pressure Drop(Pa)	Outlet Dimension(mm)	Dimension LxWxH(mm)	Power (W)	Power Supply
BS-266-20UP	4000	145	300x400	2000x1300x757(Back976)	1400	3P+N+PE
BS-266-24UP	4800		Selectable Front/Top/Back Discharge	2400x1300x757(Back976)	2100	AC380 50HZ

Note: 1. Specifications are listed for reference purpose only and are subject to change without prior notice.
 2.Optional components: Fresh Air System/Mist Blasting Wheel; 3.All models are customizable with no side plate or single-sided plate.
 4.If fan is required to be placed on the left or side discharge required, please inform before placing an order.

6-Stage Purification



98% Stir-fry

Maximum Filtration Efficiency for Low Level Discharge & Heavy Load Cooking



1100 Technical Specifications

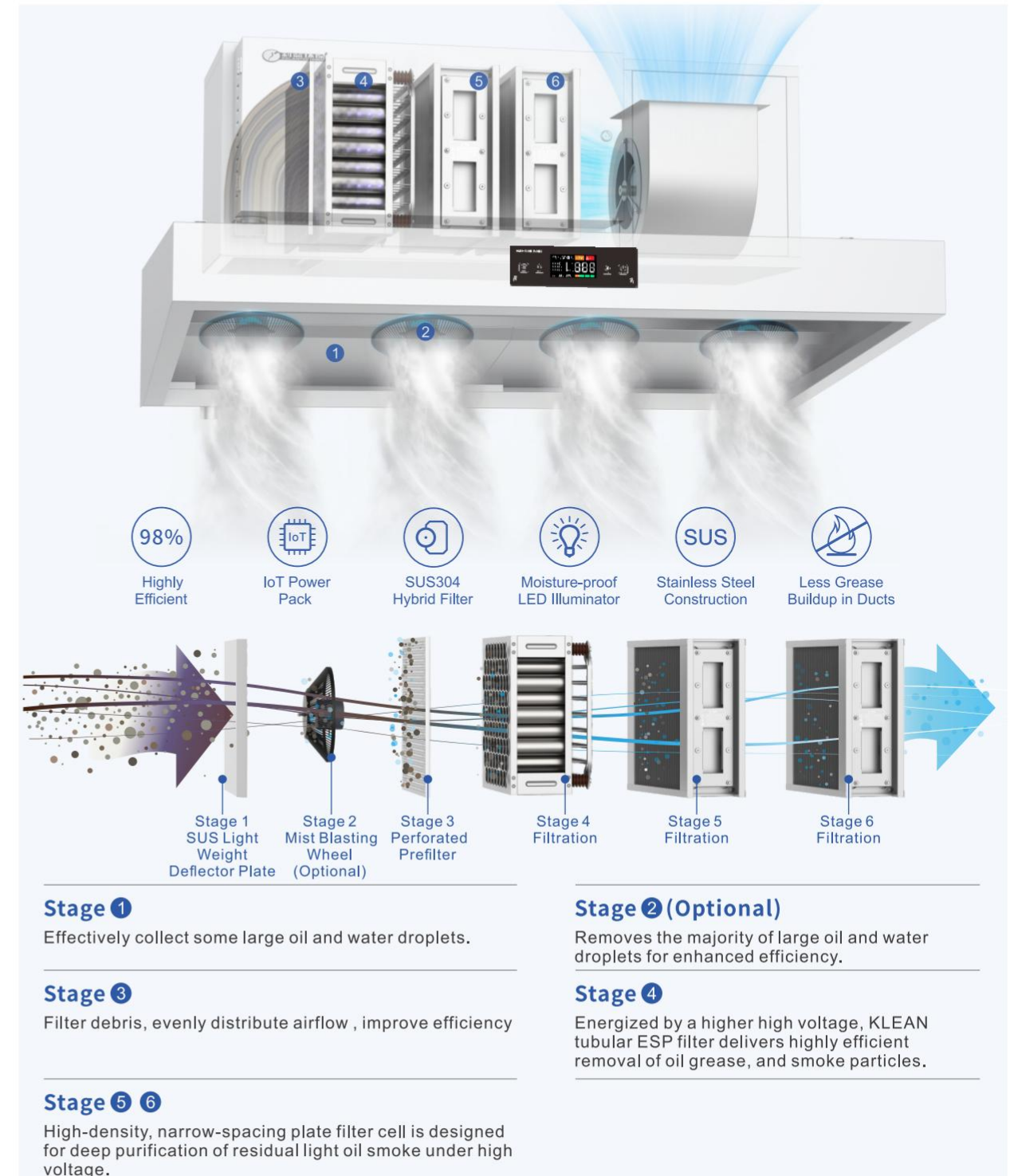
Model	Airflow (m³/h)	Pressure Drop(Pa)	Outlet Dimension(mm)	Dimension LxWxH(mm)	Power Supply	Power (W)
BS-266-20G	4000	150	300x400 Selectable Front/Top/Back Discharge	2000x1100x757(Back976)	3P+N+PE	2000
BS-266-24G	4800			2400x1100x757(Back976)	50HZ	

1300 Technical Specifications

Model	Airflow (m³/h)	Pressure Drop(Pa)	Outlet Dimension(mm)	Dimension LxWxH(mm)	Power Supply	Power (W)
BS-266-20GP	4000	150	300x400 Selectable Front/Top/Back Discharge	2000x1300x757(Back976)	3P+N+PE	2000
BS-266-24GP	4800			2400x1300x757(Back976)	50HZ	

Note: 1. Specifications are listed for reference purpose only and are subject to change without prior notice.
 2.Optional components: Fresh Air System/Mist Blasting Wheel; 3.All models are customizable with no side plate or single-sided plate.
 4.If fan is required to be placed on the left or side discharge required, please inform before placing an order.

6-Stage Purification



98% Barbecue Series

Maximum Filtration Efficiency for Low Level Discharge & Heavy Load Cooking



1100 Technical Specifications

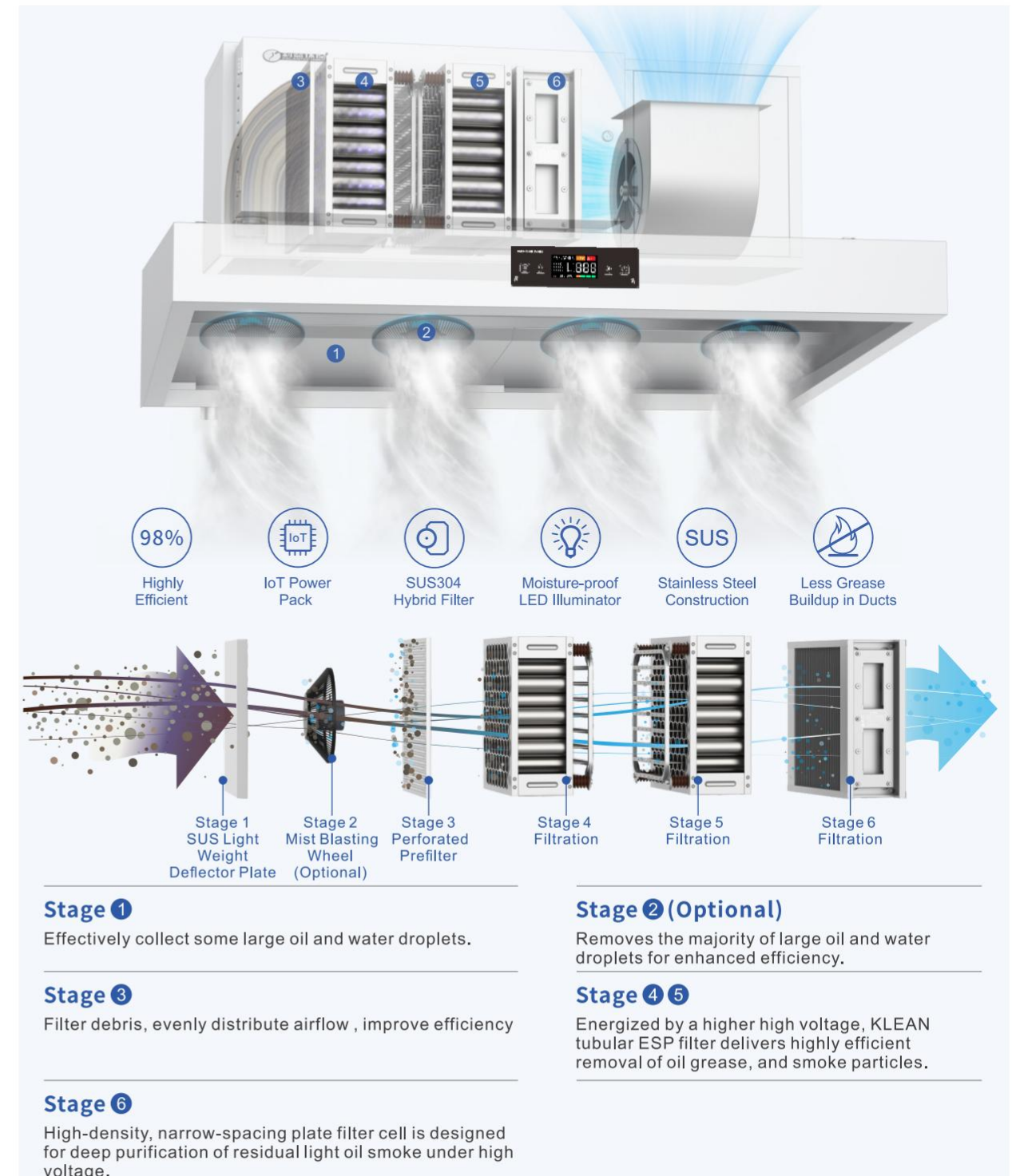
Model	Airflow (m³/h)	Pressure Drop(Pa)	Outlet Dimension(mm)	Dimension LxWxH(mm)	Power Supply	Power (W)
BS-266-20S	4000	150	300x400 Selectable Front/Top/Back Discharge	2000x1100x757(Back976)	3P+N+PE	2000
BS-266-24S	4800			2400x1100x757(Back976)	50HZ	

1300 Technical Specifications

Model	Airflow (m³/h)	Pressure Drop(Pa)	Outlet Dimension(mm)	Dimension LxWxH(mm)	Power Supply	Power (W)
BS-266-20SP	4000	150	300x400 Selectable Front/Top/Back Discharge	2000x1300x757(Back976)	3P+N+PE	2000
BS-266-24SP	4800			2400x1300x757(Back976)	50HZ	

Note: 1. Specifications are listed for reference purpose only and are subject to change without prior notice.
 2.Optional components: Fresh Air System/Mist Blasting Wheel; 3.All models are customizable with no side plate or single-sided plate.
 4.If fan is required to be placed on the left or side discharge required, please inform before placing an order.

6-Stage Purification



85% Mist Blasting Wheel Series



1100 Technical Specifications

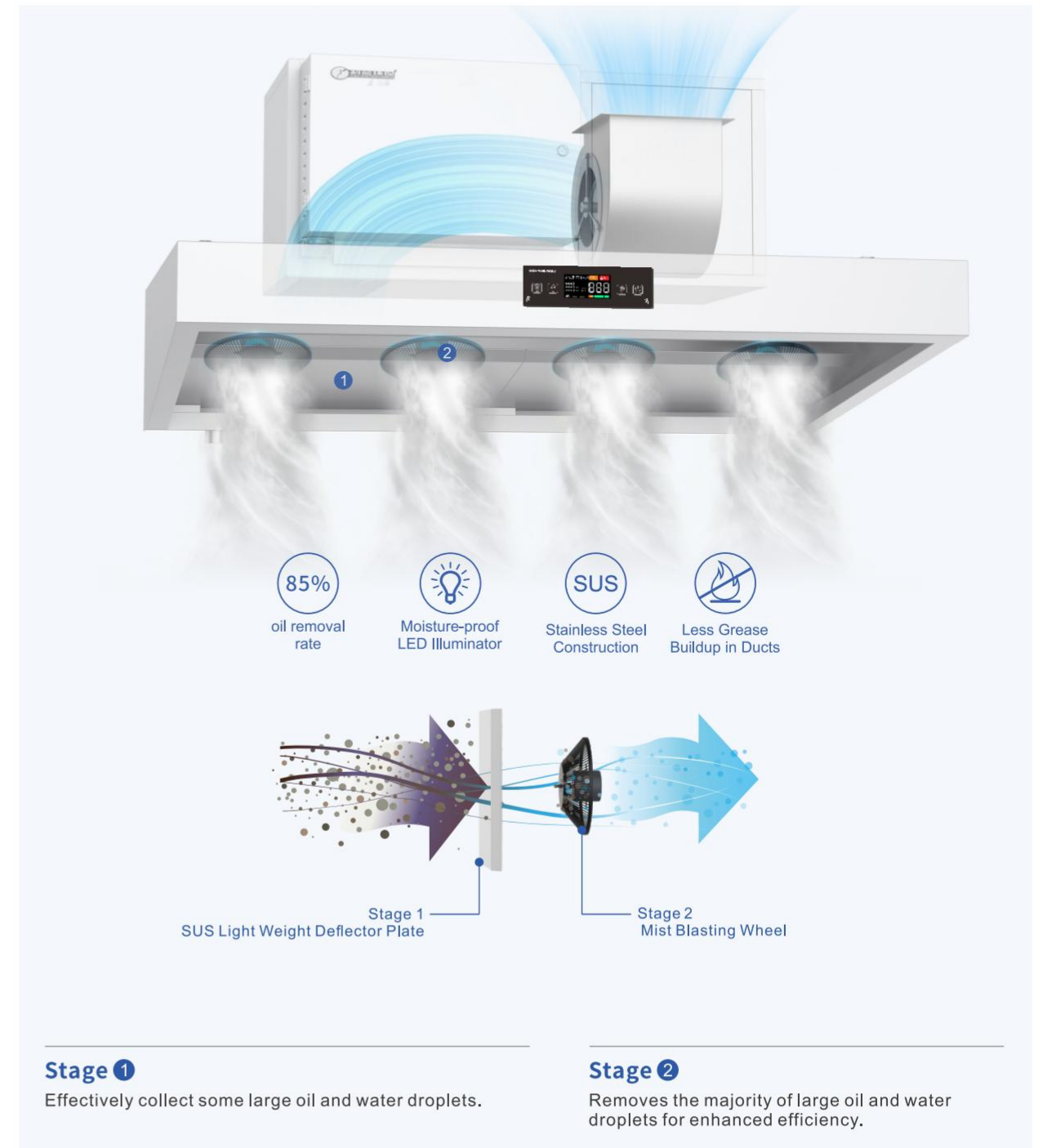
Model	Airflow (m³/h)	Pressure Drop(Pa)	Outlet Dimension(mm)	DimensionLxWxH(mm)	Power (W)	Mist Blasting Wheel
BS-266-16Y	3200	100	300x400	1600x1100x757(Back976)	1100	BSL-3P
BS-266-20Y	4000		Selectable	2000x1100x757(Back976)	1200	BSL-4P
BS-266-24Y	4800		Front/Top/ Back Discharge	2400x1100x757(Back976)	2000	BSL-4P

1300 Technical Specifications

Model	Airflow (m³/h)	Pressure Drop(Pa)	Outlet Dimension(mm)	DimensionLxWxH(mm)	Power (W)	Mist Blasting Wheel
BS-266-16YP	3200	100	300x400	1600x1300x757(Back976)	1100	BSL-3P
BS-266-20YP	4000		Selectable	2000x1300x757(Back976)	1200	BSL-4P
BS-266-24YP	4800		Front/Top/ Back Discharge	2400x1300x757(Back976)	2000	BSL-4P

Note: 1. Specifications are listed for reference purpose only and are subject to change without prior notice.
 2. Standard with button control, digital control panel as an option. 3. Optional components: Fresh Air System/Mist Blasting Wheel;
 4. All models are customizable with no side plate or single-sided plate.
 5. If fan is required to be placed on the left or side discharge required, please inform before placing an order.

2-Stage Purification



Island Series

The High Emission, High Emission + UV, and Low Emission series could be customized to be Island type.



1100 Technical Specifications

Model	Airflow (m³/h)	Pressure Drop(Pa)	Outlet Dimension(mm)	DimensionLxWxH(mm)	Power (W)	UV
BS-266-16JL	3200	100	300x400	1600x1100x1150	1300	Optional
BS-266-20JL	4000			2000x1100x1150	1300	
BS-266-24JL	4800			2400x1100x1150	2000	

Model	Airflow (m³/h)	Pressure Drop(Pa)	Outlet Dimension(mm)	DimensionLxWxH(mm)	Power (W)	Power Supply
BS-266-16TL	3200	130	300x400	1600x1100x1150	1600	3P+N+PE
BS-266-20TL	4000			2000x1100x1150	1600	AC380
BS-266-24TL	4800			2400x1100x1150	2300	50HZ

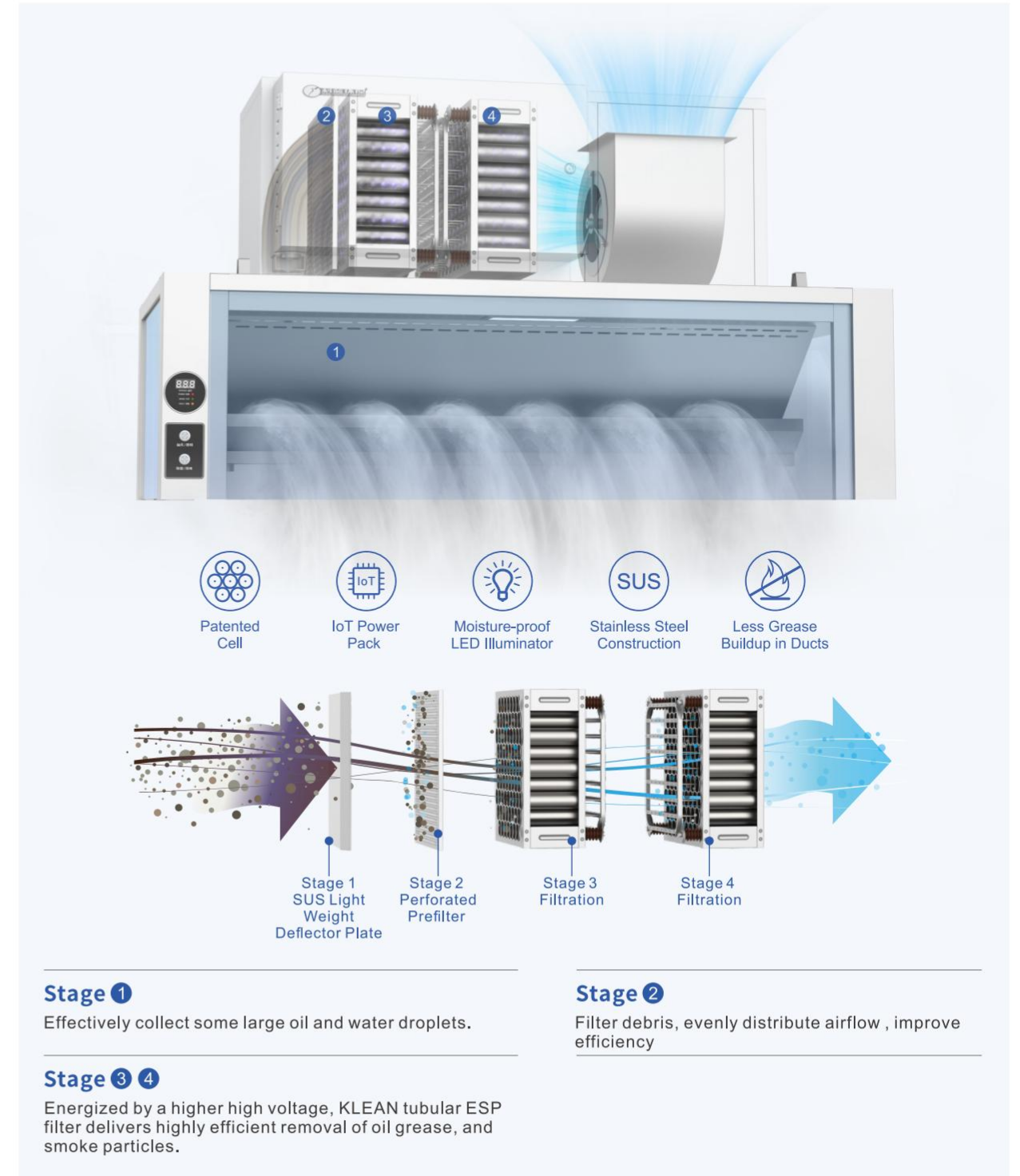
1300 Technical Specifications

Model	Airflow (m³/h)	Pressure Drop(Pa)	Outlet Dimension(mm)	DimensionLxWxH(mm)	Power (W)	UV
BS-266-16JLP	3200	100	300x400	1600x1300x1150	1300	Optional
BS-266-20JLP	4000			2000x1300x1150	1300	
BS-266-24JLP	4800			2400x1300x1150	2000	

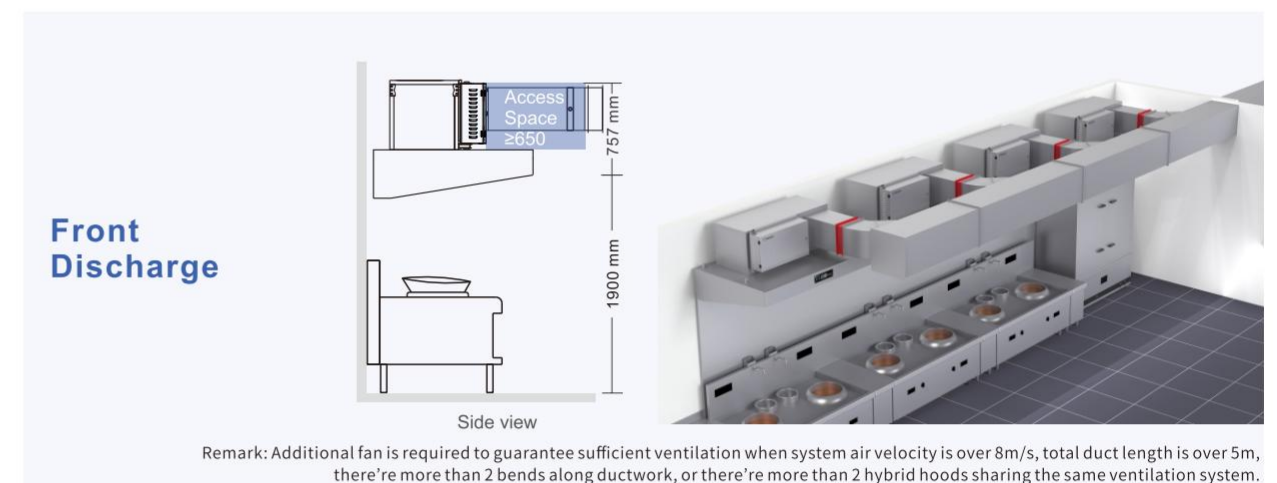
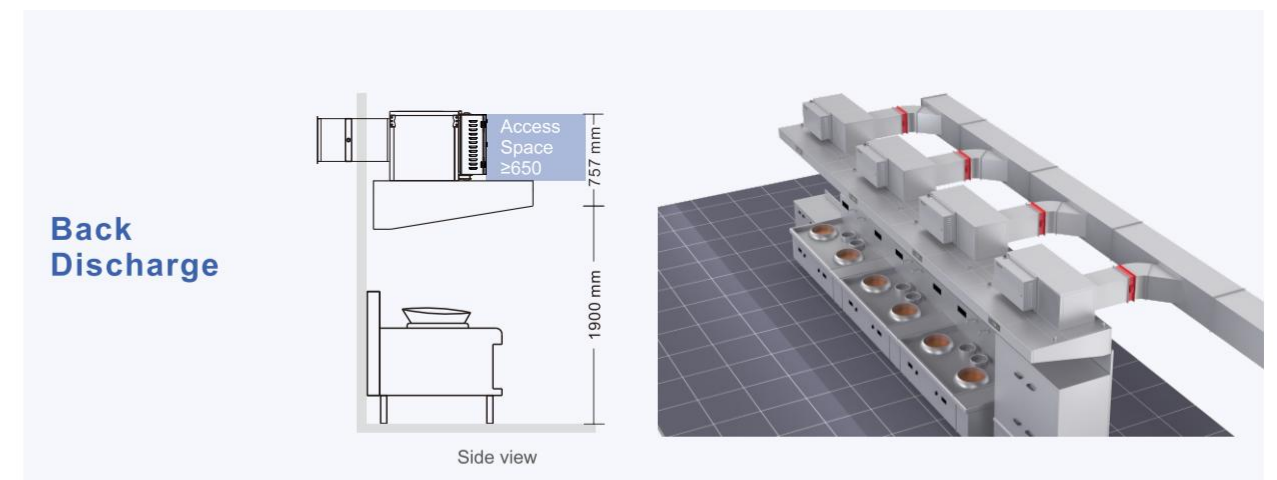
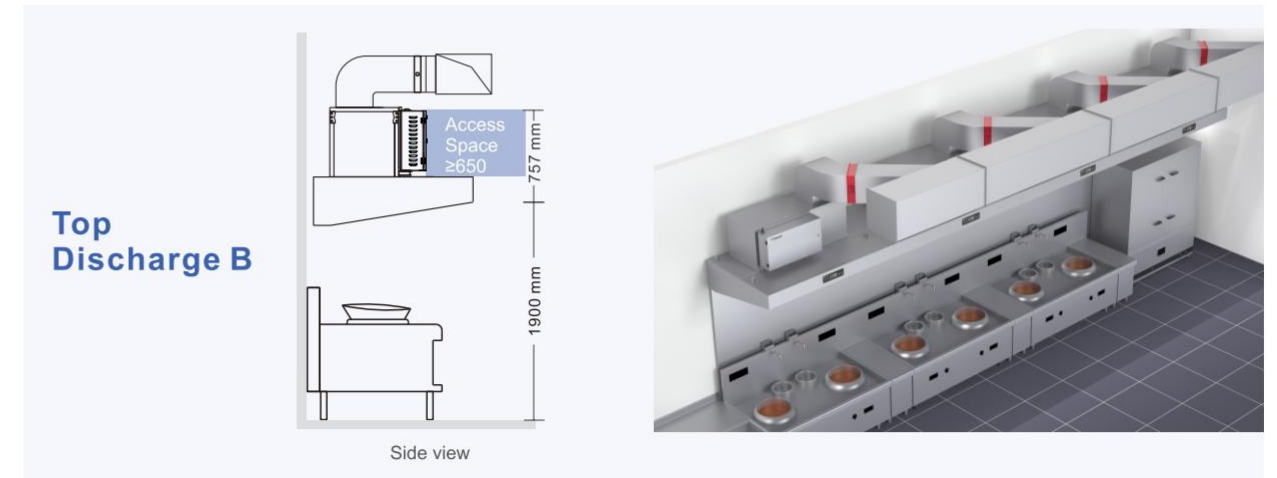
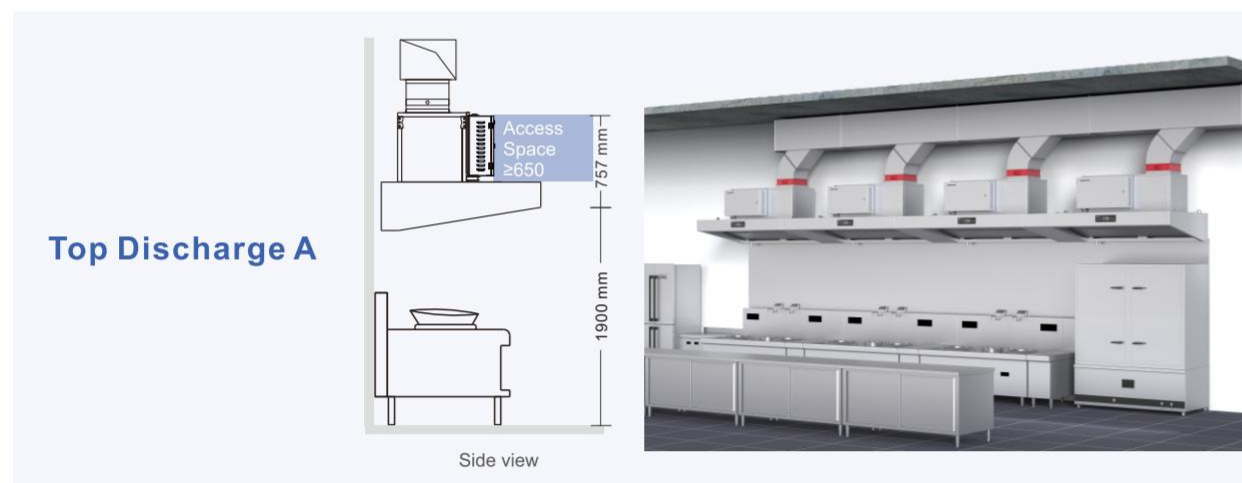
Model	Airflow (m³/h)	Pressure Drop(Pa)	Outlet Dimension(mm)	DimensionLxWxH(mm)	Power (W)	Power Supply
BS-266-16TLP	3200	130	300x400	1600x1300x1150	1600	3P+N+PE
BS-266-20TLP	4000			2000x1300x1150	1600	AC380
BS-266-24TLP	4800			2400x1300x1150	2300	50HZ

Note: 1. Specifications are listed for reference purpose only and are subject to change without prior notice.
 2. All models are customizable with no side panels or single-sided panels.
 3. If fan is required to be placed on the left or side discharge required, please inform before placing an order.

4-Stage Purification



Flexible Installation Meet Various Scenes Application



K-CLOUD SERVICE

Collaborative Remote Support is Available

Optimal operation suggestions and maintenance alerts can be shared through the kCloud Platform by KLEAN's professionals behind the screen. When necessary, active onsite services can be initiated to handle complex issues in a more timely manner.

Kitchen

With KLEAN ESP installed.

Service Center

kCloud Platform also feeds KLEAN service center with detailed information.



KLEAN ESP

Realtime transmission of working statuses based on KLEAN digital power pack and internet technologies. Realtime monitoring of exhaust emission data at the ESP exit using optional smoke meter.

User (Phone APP+PC)

For improved maintenance, working statuses of the ESP can be remotely accessed with a PC or a smart phone.

6 major service systems

32 offices and service points nationwide

5 major offices: Shijiazhuang Office, Hangzhou Office, Wuhan Office, Chengdu office, Shenzhen office. 27 nationwide sales and service outlets.

Five-star service

After-sales service engineers with high standards of service ability have been "moulded after-sales service training".

50 million product liability insurance

Insured area: People's Republic of China (excluding Hong Kong, Macao and Taiwan).

5 major storage centers

Kunming, Beijing, Wuhan, Hubei, Guiyang.

24 hours online cloud service

24 hours response, 48 hours in place, 1 hour to solve the fault, 12 months free warranty, lifetime service.

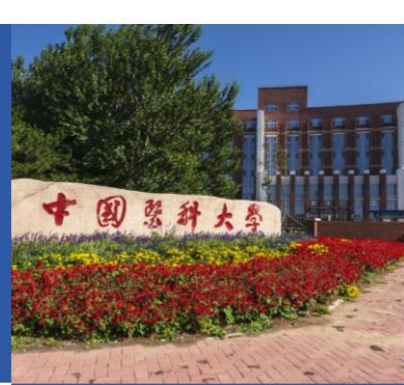
Free design/Model selection

Provide professional site investigation, engineering design, selection and installation guidance and other one-stop waste gas treatment solutions.





UNIVERSITY OF CHINESE ACADEMY OF SCIENCES



CHINA MEDICAL UNIVERSITY



JIEYANG CHAOSHAN INTERNATIONAL AIRPORT



WENZHOU WENQING EXPRESSWAY

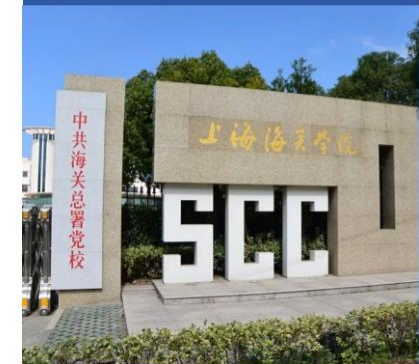
XI'AN JIAOTONG UNIVERSITY



PANASONIC ELECTRONIC MATERIALS (GUANGZHOU) CO., LTD



FAW VOLKSWAGEN FACTORY



NANJING UNIVERSITY OF AERONAUTICS AND ASTRONAUTICS



NANJING UNIVERSITY

MIDEA GROUP HEADQUARTERS



Cases School/Government/Organization Canteen

XIAMEN RAIL TRANSIT GROUP SMART CANTEEN



MACAU UNIVERSITY OF SCIENCE AND TECHNOLOGY

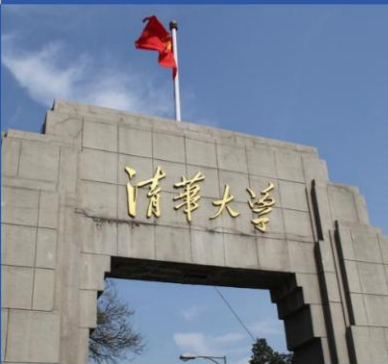


XIAMEN NATIONAL ACCOUNTING COLLEGE



HUNAN NORMAL UNIVERSITY

CHONGQING HIGH TECH INDUSTRY RESEARCH INSTITUTE



XIAMEN DAILY



ALIBABA CLOUD VALLEY PARK



DEPARTMENT OF ECOLOGY AND ENVIRONMENT OF JIANGXI PROVINCE



Cases

Commercial Complex



New Century Global Center, Chengdu

Category: Multipurpose Commercial Complex
Location: Tianfu Avenue, Wuhou District, Chengdu,
Description: New Century Global Centre is a large scale project of Sichuan Province and Chengdu Municipal Government to build a modern idyllic city, the main building is designed with the concept of "flowing melody", which is the world's largest single building. Covering an area of about 1,300 mu, with a total construction area of about 1.76 million square metres, the main plan size is about 500*400m, and the main body height is about 100 metres. It is a multi-functional building integrating amusement, exhibition, business, media, shopping and hotel, which is made up of the central amusement area and the surrounding hotels, businesses, offices and other parts.

Developer: Century City International Exhibition Center Co.,
Featuring: KLEAN90% J Series 25 units
Installed in: JAN, 2019
Total Airflow: 1723000 m³/h



Taigugang Wangfujing Shopping Center

Category: Multipurpose Commercial Complex
Location: Hongcheng Road, Qingyunpu District, Nanchang City, Jiangxi Province, China
Description: Covering an area of about 116 mu, with a total construction area of about 800,000m² and a total investment of about 7 billion RMB. The Wangfujing Shopping Centre project covers an area of 230,000m² and is built according to the standard of world-class commercial complex, covering the world's top hotel - JW Marriott Hotel, 80,000m² all-weather modern business streets, super Grade A intelligent eco-office building and other functional subdivisions.

Developer: HUGIANT GROUP
Featuring: KLEAN 95% S Series 117 units
Installed in: FEB, 2019
Total Airflow: 2200000 m³/h



Wanda Plaza, Shijiazhuang Changan

Category: Multipurpose Commercial Complex
Location: Zhongshan Road, Chang'an District, Shijiazhuang
Description: The second Wanda Plaza in Shijiazhuang, with a total construction area of 145,000 square meters, is a one-stop lifestyle, entertainment and commercial center that integrates shopping, leisure, entertainment and dining for the whole family to enjoy.

Developer: Shijiazhuang Guorui Real Estate Development Co., Ltd.
Featuring: 66 units of KLEAN 90% J Series
Installed in: NOV, 2018
Total Airflow: 1056000 m³/h



Taihe Central Plaza, Beijing

Category: Multipurpose Commercial Complex
Location: Daxing District, Beijing, China
Description: Taihe Central Plaza is located in Beijing Daxing New Town, close to Yihezhuang Station of Metro Line 4 (within one kilometer). It is one of the representative works of Taihe's "Plaza Series" large-scale urban complexes. The architectural design is based on the concept of "Water Cloud City" to create a "flowing cloud and water" architectural form. It covers an area of about 140,000 square meters and a construction area of about 400,000 square meters.

Developer: Beijing Taihe Jiahua Real Estate Development Co., Ltd.
Featuring: 12 units of KLEAN 90% J Series
Installed in: NOV, 2018
Total Airflow: 486000 m³/h



Vanke Cloud City, Shenzhen

Category: Apartment Complex
Location: Nanshan District, Shenzhen, China
Description: The Vanke Cloud City is located in the Liuxian Dong Strategic Emerging Industrial Headquarters Base in Xili, Nanshan District, Shenzhen. It covers an area of approximately 400,000 square meters and has a total construction area of 1.335 million square meters. This includes 775,000 square meters of industrial buildings, 250,000 square meters of apartment facilities, and 310,000 square meters of comprehensive facilities. Vanke Cloud City is dedicated to becoming an innovative technology city, focusing on industry as the core and building a green and livable industrial cluster.

Developer: Shenzhen Vanke City View Real Estate Development Company Limited
Featuring: KLEAN ESP 41 units
Installed in: JUN, 2018
Total Airflow: 1072000m³/h



Xiangjiang Fortune Finance Centre

Category: Mixed-use Commercial Complex
Location: Yuelu District, Changsha City, Hunan Province, China.
Description: As the "Financial Landmark of Xiangjiang New Area," this project anchors Hunan financial center. Located atop Metro Line 4 (Financial Center Station), it spans 660,000 square meters and includes office buildings, commercial spaces, and hotel apartments. The 328-meter Tower A will be the tallest building under construction in Hunan Xiangjiang New Area.

Developer: Changsha Pilot Investment Holdings Group Co., Ltd
Featuring: KLEAN ESP 33 units
Installed in: Nov, 2018
Total Airflow: 1254000m³/h



CREC Qingdao Cosmopolitan Exposition

Category: Mixed-use Apartment Complex & Exposition
Location: Jiaonan, Huangdao, Qingdao City, Shandong Province, China

Description: CREC Qingdao Cosmopolitan Exposition located in Qingdao's West Coast New Area, invests 50 billion yuan on 3,000 acres. It integrates exhibitions, conferences, hotels, commerce, and offices, aiming to be a key center for industry-city integration and innovation. Listed as a major project in Shandong's marine economy transformation.

Developer: China Railway Real Estate Development Group Co., Ltd.
Featuring: KLEAN ESP 32 units, UV Odor Eliminator 19 units.
Installed in: Feb, 2018



Handan Global Center

Category: Commercial Complex
Location: Renmin Road, Congtai District, Handan City, Hebei Province, China

Description: The total area is 59,000m², with a construction area of about 600,000m²; of which the centralized commercial area is 180,000m². It is the largest commercial complex in Handan and even North China, and will become a landmark commercial building complex in Handan in the future.

Developer: Hebei Meishilin Group Co., Ltd.
Featuring: KLEAN ESP 59 units
Installed in: Mar, 2018
Total Airflow: 1298000m³/h

Cases

Shopping Centers/Food Courts/Chain Restaurants

Wuhan Lingjiaohu Wanda Plaza
 Wuhan Hanjie St Wanda Plaza
 Mudanjiang Wanda Plaza
 Yunnan Xishan Wanda Plaza
 Chongqing Banan Wanda Plaza
 DongguanDongcheng Wanda Plaza
 Guangzhou Luogang Wanda Plaza
 Mudanjiang Wanda Plaza
 Kunshan Jingkai Wanda Plaza



Kunming Zhixin Plaza
 Foshan Zhihui Xincheng
 Zhuhai Mingtai Plaza
 Tongde Kunming Plaza
 Changsha Mingfa Plaza
 Guangzhou Baixin Plaza
 Foshan Core Pacific Plaza
 Zhuzhou Yandi Square
 Kunming Harmony Plaza
 Xiaogan Wuyue Plaza
 Guangzhou Tee Mall
 Shenzhen Time Mall



Zhengzhou Xinzheng International Airport
 Changsha Huanghua International Airport
 Shenzhen Baoan International airport
 Fuzhou Changle International Airport
 Nanjing Lukou International Airport
 KingKey 100 Tower, Shenzhen
 Shenzhen Excellence Meilin Plaza
 Beijing Hopson Plaza
 Ningde RT-Mart International Plaza
 Dali Taiye International Plaza



The MixC, Zaoyang
 Hangzhou Yin
 Wuhan Haida Plaza
 Shenzhen EP Mall
 Jingmen Food Plaza
 Guangzhou Baotai Plaza
 Jinhua Wanda Plaza
 Jiangmen Sihui Zijin City
 Shenzhen Galaxy Legend

Shenzhen EP Mall 517 Food Plaza
 Liancheng New World Shopping Mall, Shenzhen
 Changsha Vanguard Food Court
 Huangpu Poly Garden Business Center, Guangzhou
 Zengcheng Poly Dongjiang Mansion
 Qianhai HOP World Shopping Mall, Shenzhen
 CRC Shenzhen Bay International Commercial Centre
 Wuhu Squirrel Town Tourist Resort
 Chengdu Chunxi Road Shangdu Food City
 YingtanTriumphant New World Plaza
 Haikou City Changying Universal 100
 Wonderland
 Zhongshan Tianyi International Plaza



Guangzhou Baiyun International Airport
 Zhonshan Poly International Plaza
 Grand Mansion in Guangzhou pazhou
 Guangzhou R&F Yingkai Square
 Shenyang Changbai MIXC ONE
 Kunming World Horti-Expo Garden
 Zhuzhou Midea Times Square
 Shanghai Lingang Powerlong Plaza
 Zhuzhou Wangfujing Department Store
 Zhongshan Daxin Xinduhui
 Jiaozuo Wangfujing Department Store
 Kunming Helenbergh International



Suzhou Suning Life Plaza
 Huaian Suning Life Plaza
 Ningbo Xiangshan
 Peninsula
 Vanke Kingsway International
 Xining Mojia Food Street
 Qibao Vanke Plaza
 GZ Vanguard MIXC City



Beijing Daqian Restaurant
 Yonghe King Fast Food
 Guangzhou Restaurant
 Chongqing Tao Ran Ju
 Yonghe Soy Milk King
 Jiawang Chain Restaurant
 Ducheng Fast Food Chain
 Go Believe



Freshippo
 Changsha Peng Chu
 Xiabu Xiabu
 Grandma's
 Uegashima Coffee
 Dicos
 Mao Jia Canteen
 Li-hua Fast food
 Madonald's
 Yum! Brands.Inc



Tanlu Grilled Fish
 Hai Di Lao hotpot
 Ajisen Ramen
 Xibei Noodles
 South Beauty
 Bao Bao Bao soup
 Yoshinoya Co.,Ltd
 Little Sheet Hotpot
 Go Believe

Quanjude Roast duck Restaurant
 Chu Sao DangJia Chain Restaurant
 Kungfu Catering Management
 Wun Nam Homemade Recipe
 Jiumaojiu Resturant Chain Co., Ltd
 Qing Dao Ballad And Fish Dumpling



Hangzhou Xinkaiyuan Hotel
 Guangzhou Banzai Sushi Chain
 Meng Ziyuan Restaurant Chain Group
 Jia Le Yuan Fast Food Chain Restaurant
 Fu Zhi Zun Fast Food Chain Restaurant
 Family Fast Food Chain Restaurant
 Guangzhou Taikoo Hui Super Wenheyong
 Wuhan New Farmer Beef Noodle Restaurant
 Wuhan Let The Sun Grand View Hotel

