



# Product Approval

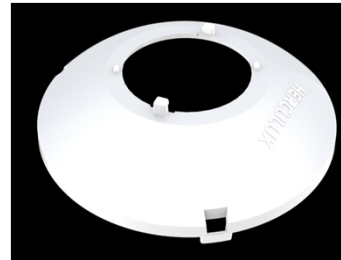
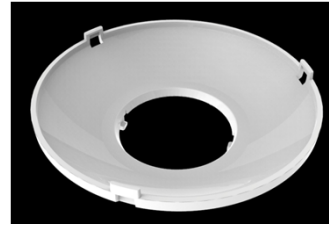
Letter of acknowledgment number:

Customer Name:

Product Image: HK Filmy 68@13 Lens support

Mold number: 1.07.12931

PN: HK-CY-68@15-0724-S



Supplier confirm				Customer confirm			
draftingman		Date		Qualified		Date	
Project Maneger		Date		Unqualified		Date	
R&D audit		Date		R&D audit		Date	
Quality audit		Date		Quality audit		Date	
Authorize		Date		Authorize		Date	

Both parties must sign and seal the acknowledgement after confirming that it is qualified

Factory Add: Herculux Photoelectric Park, NO 777, Wulian Road 2, Shuangliu District, Chengdu City, Sichuan Province, China.

Tel : 028-85887727 ( 801 ) 028-85887990 ( 801 ) Fax : 028-85887730 <http://www.herculux.com/>

Sales Department: Room 501-505, Comprehensive Service Building, Innovation Industrial Park Nanshan Cloud Valley, 4093 Liuxian Road Nanshan DistrictShenzhen City Guangdong P.R China, Zip code: 518055

TEL: 0755-2937 1541 FAX: 0755-2907 5140

---

\*The letter of acknowledgement is made in duplicate, one for each supplier and one for the customer.

---

Please use this product within the permitted range and environment according to the structure and material of the product. If the usage exceeds the recommended value, please test and verify by yourself. If the product is damaged due to out-of-range use, our company will not be responsible for the warranty.

#### Product material:

Customized products: The specifications and models of materials used are subject to the agreement between the two parties.

Conventional products: As a product that we continuously research and improve, under the premise of ensuring the quality and availability of the product, our company reserves the right to change the material. If the material specification and model change, without prior notice.

#### product data:

The measurement data and dimensional tolerances of the 2D drawings in the product data sheet of this acknowledgement are for reference only, and the final size shall prevail in kind.

The measurement data presented in this acknowledgment is a performance test of the product based on our company's internal test conditions and quality requirements, and the reported data is a typical value of the average results of multiple measurements. Therefore, in some cases, the actual product may deviate from the data provided. We reserve the right to notify you in advance of this data.

#### Product changes and improvements:

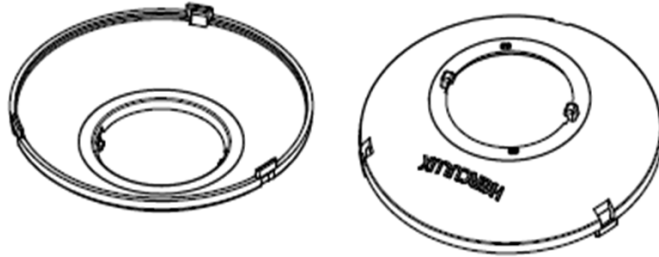
Changes and improvements of customized products are subject to the agreement between the two parties in the contract or technical documents.

As the conventional products that we continue to research and improve, our company reserves the right to make technical changes to its products, and reserves the right to make changes to data resulting from improvements without prior notice.

#### Operation cautions:

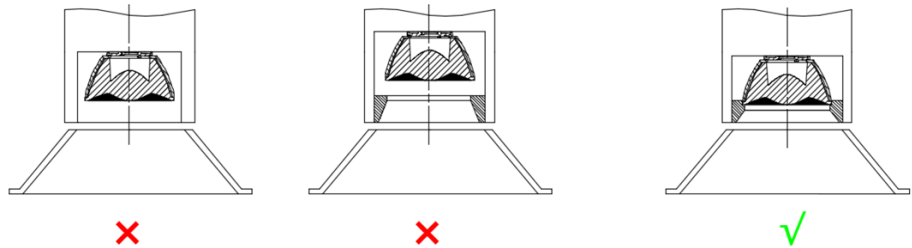
1. Please wear clean gloves during product assembly to prevent product surface contamination.
2. Try to avoid touching the optical surface of the lens when taking the lens.
3. When the surface of the product is polluted, please wipe it gently with a soft cotton cloth dipped in analytically pure neutral solvent. It is forbidden to use industrial solvents (alcohol, isopropanol, acetone, ether, toluene, xylene, carbon tetrachloride, MMA monomer, etc.) wipe.
4. The lens made of PC should not be exposed to direct sunlight in the storage and use environment. If the lens turns yellow or cracks due to long-term sunlight exposure, our company will not be responsible for the warranty.

Product Image :



Precautions :

- The application environment must conform to the allowable range of the corresponding material.
- Check whether the buckle of the lens holder and the buckle of the lens have been clamped in place
- The turnbuckle structure matched with the light source bracket and the lens bracket is only used for assembling auxiliary positioning. It cannot be used as a fixing device to receive force. You need to install a fixing device for the lens on the lamp, as shown in the following diagram. And the number of turns of each pair of brackets should not exceed 50 times.



Dimensions (L\*W\*H/Φ\*H) :

 $\Phi : 68\text{mm} * H : 15\text{mm}$ 

Materials :

PC white

Cob holder :

D35 cob holder

Screw hole spacing :

25mm

Temperature resistance :

 Limit temperature resistance :  $-40^{\circ}\text{C}$  to  $+120^{\circ}\text{C}$   
 Long-term use temperature :  $-40^{\circ}\text{C}$  to  $+100^{\circ}\text{C}$ 

Recommended COB :

Filmy D68

Environmental friendly :

Comply with Rhos/Reach

Net weight :

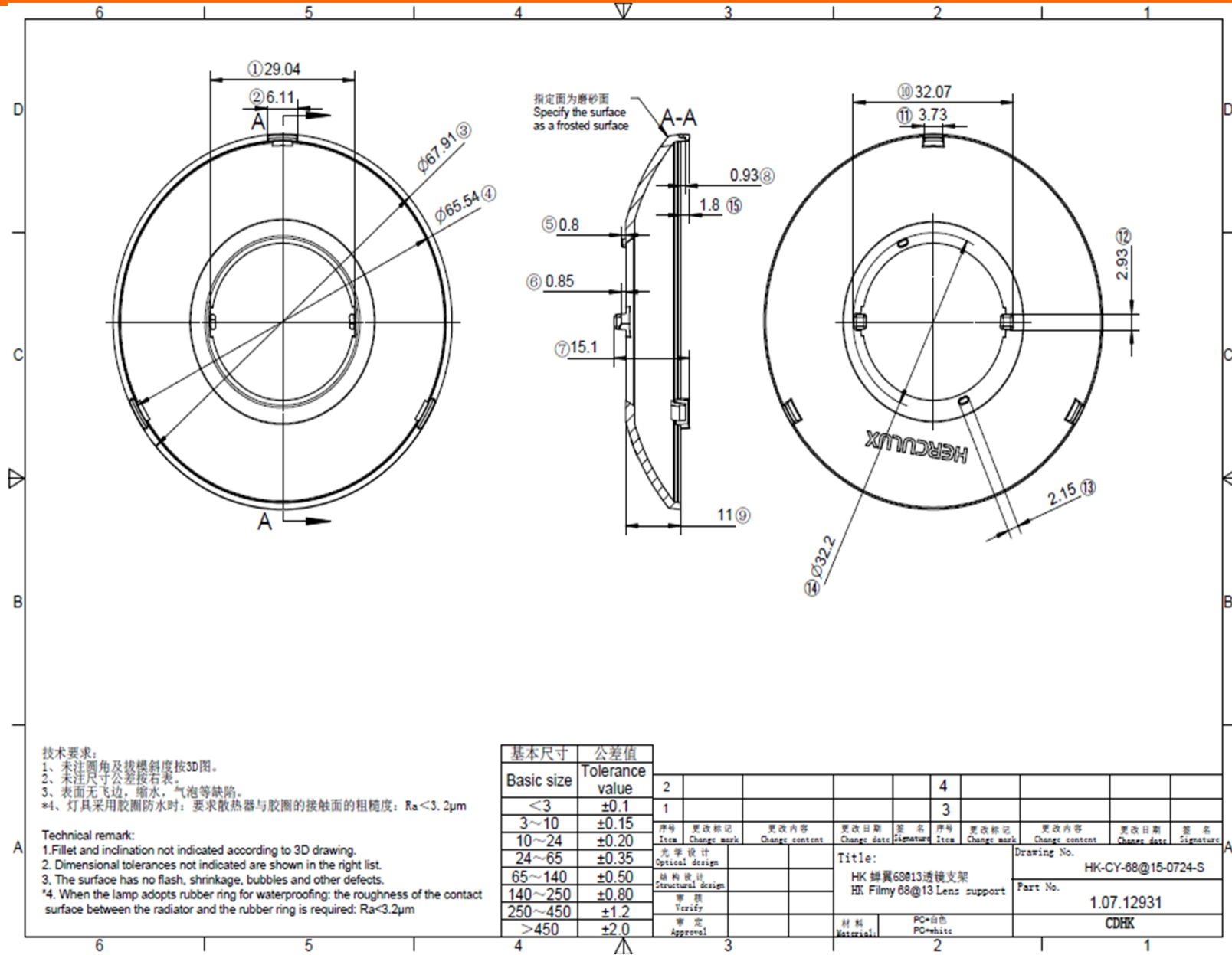
7.2g

Smallest packaging :

200pcs/sack

Packaging :

2400pcs/box



技术要求:  
 1、未注圆角及拔模斜度按3D图。  
 2、未注尺寸公差按右表。  
 3、表面无飞边，缩水，气泡等缺陷。  
 \*4、灯具采用胶圈防水时：要求散热器与胶圈的接触面的粗糙度：Ra<3.2μm

Technical remark:  
 1.Fillet and inclination not indicated according to 3D drawing.  
 2. Dimensional tolerances not indicated are shown in the right list.  
 3. The surface has no flash, shrinkage, bubbles and other defects.  
 \*4. When the lamp adopts rubber ring for waterproofing: the roughness of the contact surface between the radiator and the rubber ring is required: Ra<3.2μm

基本尺寸 Basic size	公差值 Tolerance value	2				4			
<3	±0.1	1				3			
3~10	±0.15	序号 Item	更改标记 Change mark	更改内容 Change contents	更改日期 Change date	签名 Signature	序号 Item	更改标记 Change mark	更改内容 Change contents
10~24	±0.20	光学设计 Optical design				Title:			
24~65	±0.35	结构设计 Structural design				HK 蚌翼60813透镜支架 HK Filmy 68@13 Lens support			
65~140	±0.50	审核 Verify				Drawing No. HK-CY-68@15-0724-S			
140~250	±0.80	审定 Approval				Part No. 1.07.12931			
250~450	±1.2					材料 Material: PC+白胶 PC+white			
>450	±2.0					CDHK			