



XCMG FOR YOUR SUCCESS

XE600DK **MAX**

Hydraulic Excavator

Operating weight: 54,500 kg Rated power: 336 kw/1,800 rpm Bucket capacity: 3.6 m³



More Reliable and Durable

Large diameter bucket cylinder for greater digging force.

The supporting point of the working device adopts forging structure, and the overall stress relief process after welding has higher strength and longer service life.

The large-capacity rock bucket adopts a double-arc design structure, which reduces the resistance during excavation and makes it easier to load and unload materials. At the same time, it adopts XCMG special bucket teeth, which has stronger penetration, better wear resistance, and more than double the service life.

Weight increased counterweight to ensure the torque balance of the whole machine, and the hammering operation is more stable.

Imported brand walking assembly, high reliability, the largest tractive force with the same tonnage in the industry, and good passing ability.

Extended and widened heavy-duty mining chassis.

High torque travel motor assembly.

The track roller replaces the carrier roller, the number of single-side carrier roller was 3 pcs, and the track roller is 9 pcs, the force is uniform, the shaft is not easy to deform, and the reliability is high.

Integral full guard rail clamp, good guiding performance, high reliability and long service life.

The double grouser shoes are enlarged and thickened, with high strength, high reliability, strong grip ability, and better mine passability.

Working Conditions

It is suitable for surface stripping, rock crushing, excavation and other operations in large-scale or aggregate mines, coal mines, metal mines and other open-pit mines.

More energy-saving and environment-friendly

Lower fuel consumption

Cummins' advanced intelligent electronic control system improves the overall performance of the engine, being more reliable and durable.

The power and self-weight can be increased by 30% comparing with the engine of the same level, the structure is more compact, and the installation space and use cost are saved.

Using ultra-high pressure common rail fuel system, more powerful, low-speed and high-torque advantages are obvious, noise reduction and shock absorption effects are better.

Cummins NanoNet filtration system can efficiently filter out particles above 5 microns, which can increase 13 times compared with traditional filtration.



More Efficient Return

The largest main pump of the same tonnage

Large-displacement main pump with the largest tonnage, reliable and durable.

Larger flow output, faster speed and higher crushing efficiency.

The pump has compact structure, high power density, large specific power, and more convenient maintenance.



Integrated air filter

With integrated air filter, the replacement cycle of the filter element can be increased to 1000h, and the maintenance cycle can be extended by 2 times.

Low intake resistance, 66% reduction in air resistance, reduce early engine wear and improve engine life, full-cycle filtration efficiency up to 99.99%, high combustion efficiency and lower fuel consumption.

Suitable for medium and heavy dust concentration environments, the dust holding capacity is 3 times that of conventional ones.

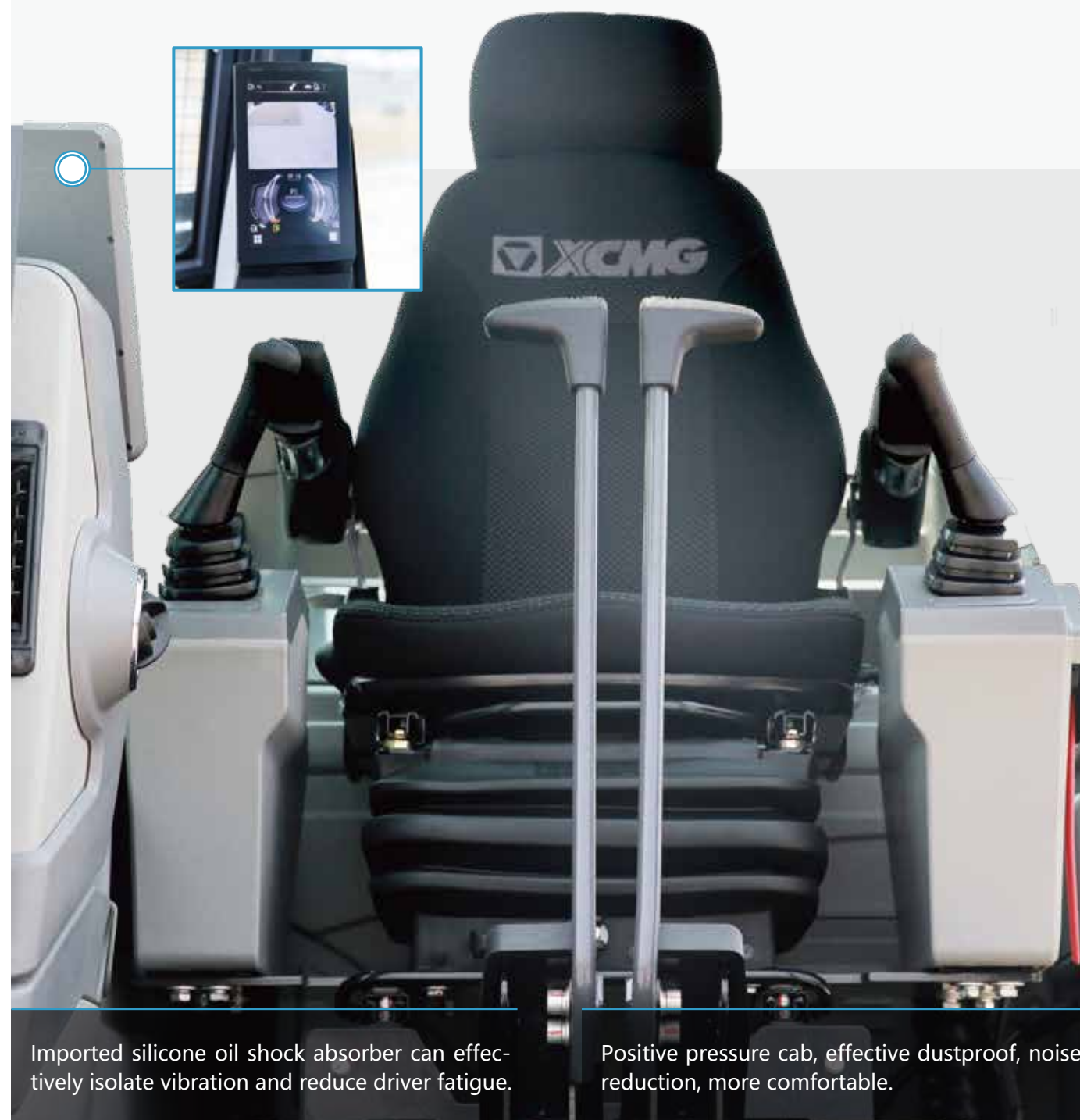


More Comfortable and Safe

New generation pressurized FOPS cab.
International certified cab, higher safety and reliability.

Security Monitoring

Standard rear high-definition camera monitoring rear working conditions.



Imported silicone oil shock absorber can effectively isolate vibration and reduce driver fatigue.

Positive pressure cab, effective dustproof, noise reduction, more comfortable.

For diversified construction conditions, we provide customers with

Multifunctional equipment with reliable quality and advanced performance

Greatly expanding the functions and fully extending the operation scope of the excavator, continuously to create more value and super high profit for you.

Side jack hammer



Application:
Cement road and concrete fragmentation, building demolition.

Olecranon shear



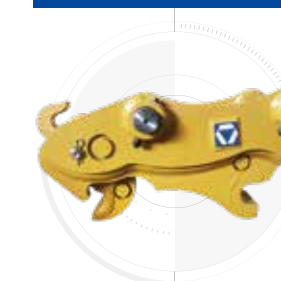
Application:
Dismantling of scrapped and heavy vehicles, steel structures such as steel plants, metals, ships, and bridges.

Compactor



Application:
Highway slope protection, Consolidation of dams and ditches.

Quick coupler



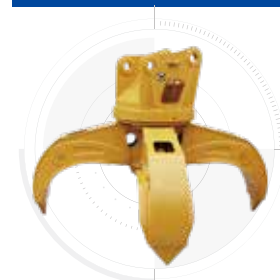
Application:
Quickly coupled with XCMG diversified attachments.

Pile driver



Application:
Medium and short pile projects for bridges, cofferdams wharfs and deep foundation pit support.

Orange peel grab



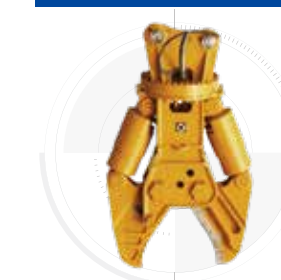
Application:
Loading and dumping of irregular and bulky materials such as scrap iron, pig iron, ore, garbage, etc.

Pulverizer



Application:
Secondary crushing of concrete and separation of steel and concrete.

Double cylinder shear



Application:
Abandoned factory buildings, cardismantling and other projects.

Hydraulic grapple



Application:
Special equipment for loading and dumping wood and stone.

Hydraulic pilers



Application:
Grabbing of construction waste, stone, wood and other materials.

Hydraulic shear



Application:
Special equipment for dismantling scrapped cars and renewable resources.

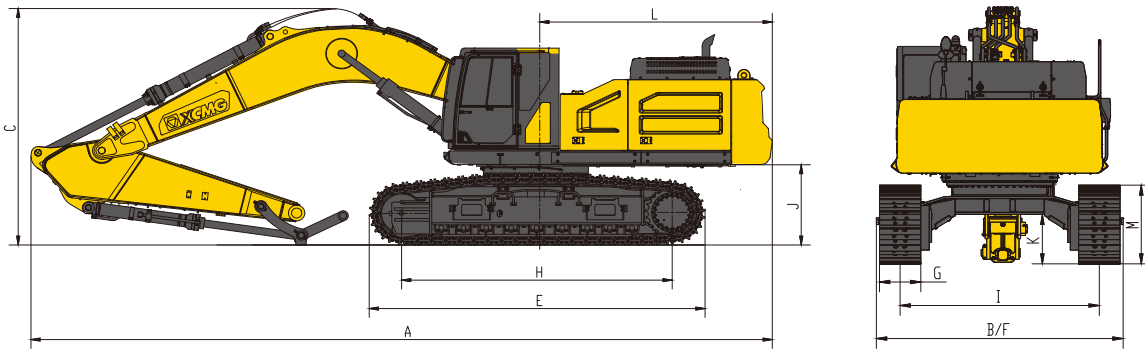
Top side hammer



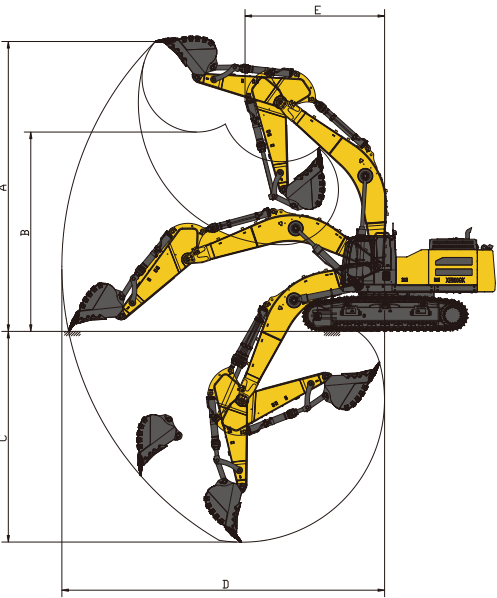
Application:
Mines, road crushing, municipal garden renovation, building demolition, reinforced concrete crushing, etc.



Product Dimensions



Overall Dimensions		Unit: mm
A	Overall length	12,340
B	Overall width	3,722 <small>Including foot pedal</small>
C	Overall height	4,100
D	Width of platform	3,095
E	Track length	5,700
F	Overall width of chassis	3,490 <small>Excluding foot pedal</small>
G	Track shoe width	600
H	Wheel base of crawler	4,638
I	Track gauge	2,890
J	Counterweight clearance	1,359
K	Min. ground clearance	518
L	Min. tail swing radius	3,920
M	Track height	1,225



Working scope		Unit: mm
A	Max. digging height	10,390
B	Max. dumping height	7,216
C	Max. digging depth	7,527
D	Maximum depth cut for 2,240mm(8 ft) level bottom	6,885
E	Max. Vertical digging depth	5,425
F	Max. digging radius	11,622
G	Min. swing radius	4,970

Product Specifications	Unit	XE600DK MAX
Operating weight	kg	54,500
Bucket capacity	m³	3.6
Engine		
Engine model	/	QSX12
EFI	/	√
4-stroke	/	√
Water-cooling	/	√
Turbocharging	/	√
Air-air intercooler	/	√
Number of cylinders	/	6
Engine output power	kw/rpm	336/1,800
Displacement	L	11.8
Hydraulic system		
Main pump	/	Two piston pump
Main pump rated flow	L/min	2×425
Main safety valve pressure	MPa	34.3/37
Traveling system pressure	MPa	34.3
Slewing system pressure	MPa	29
Pilot system pressure	MPa	3.9

Product Specifications	Unit	XE600DK MAX
Main performance		
Traveling speed	km/h	5.4/3.2
Swing speed	r/min	7.9
Grade ability	°	≤35
Ground pressure	kPa	92
Bucket digging force	kN	330
Arm digging force	kN	276
Maximum traction force	kN	370
Oil capacity		
Fuel tank capacity	L	650
Hydraulic oil tank volume	L	430
Engine oil capacity	L	36
Standard		
Length of boom	mm	6,900
Length of arm	mm	2,900
Bucket capacity	m³	3.6
Optional		
Length of boom	mm	6,900
Length of arm	mm	2,750
Bucket capacity	m³	3.8/4.0

