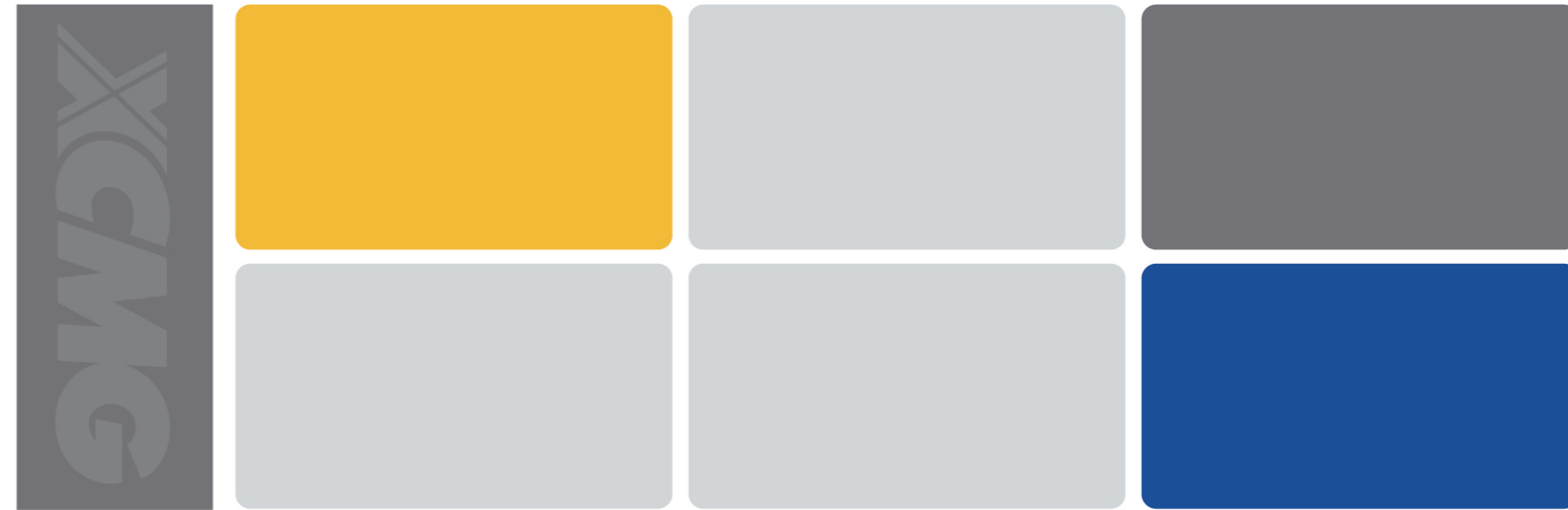




徐工徐工 助您成功
XCMG FOR YOUR SUCCESS

HB52K 混凝土泵车

Truck-mounted Concrete Boom Pump



徐州徐工施维英机械有限公司
Xuzhou XCMG SCHWING Machinery Co., Ltd.

地址(Add): 中国江苏省徐州市金山桥经济开发区桃山路29号 邮编(Post Code): 221001
No.29 Taoshan Road, Economic development zone of jinshanqiao,Xuzhou, Jiangsu Province, China

销售电话(Sale Tel): 86 0516-87892528

服务电话(Service Tel): 86 0516-87892077

备件电话(Service Tel): 86 0516-87892511

服务及质量投诉电话(Quality Supervision Tel): 86 0516-87892503

统一客服热线(Unified service hotline): 86 400-110-9999



欢迎访问徐工商城
省心更省钱一站式



欢迎关注徐工施维英官方微信
1. 识别图中“XCMG-SCHWING”微信好友
2. 查找公众号“徐工施维英”添加好友
3. 直接扫描上方二维码添加好友



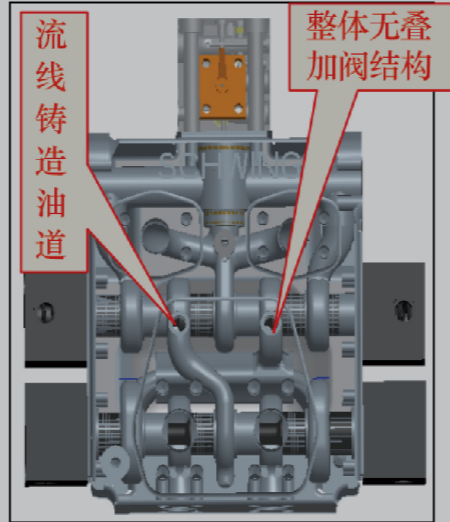
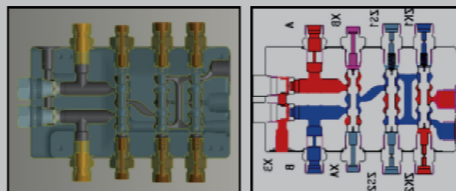
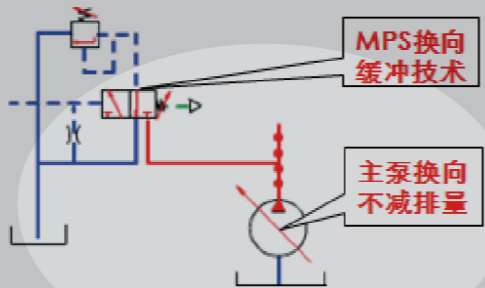
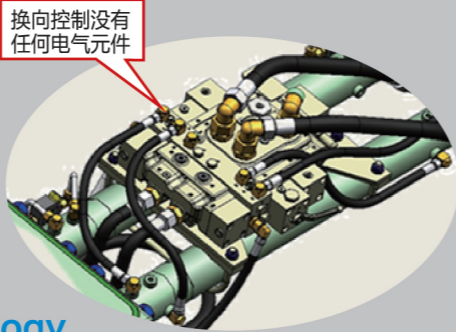
扫码关注X-LINK
轻松获取免费试用资格

本印刷品所包含的图片及数据，随着产品的不断升级而改变，请以实际产品为准。
Pictures and data in this catalog change with the upgrade and modification of products, so please take the actual vehicle as reference.





HB52K混凝土泵车 HB52k Truck-mounted Concrete Boom Pump



融合施维英液压控制技术

Combination of Schwing's hydraulic control technology

全液压换向技术 Fully hydraulic reversing technology

● 可实现信号检测、处理、换向、缓冲等过程全液压控制，无需任何电器元件参与，高效稳定，无污染
Signal detection, processing, reversing and buffering process can be fully controlled by hydraulic pressure, without participation of any electrical component which is, efficient and stable, without pollution

● 融合施维英泵送专用液压阀制造技术
Combination of Schwing's special pumping hydraulic valve manufacturing technology

● 整体式流线型铸造油道制造技术
Whole streamlined cast oil passages manufacturing technology

● 泵送压力损失降低2.5MPa，平均减少功率损失25kW，节油0.2升/立方
The pumping pressure loss is reduced by 2.5MPa, with average power loss reduced by 25kW, thus oil-saving up to 0.2 liter / m³

● 系统发热小，油温可控制在60度以下，安全可靠
With less heating from the system, oil temperature can be controlled under 60°C, safe and reliable

MPS泵送缓冲技术 MPS pumping buffering technology

● 泵送换向冲击降低80%，整车震动量减少50%
The pumping reversing impact is reduced by 80%, and vehicle vibration is reduced by 50%

● 泵送换向时间短（小于0.1S），效率提升6%，泵送量提升10立方/小时
The pumping reversing time is short (less than 0.1s), with efficiency improved by 6% and with the pumping capacity increased by 10 m³/hour

● 液压系统无故障率时间增加1倍
Failure-free time of hydraulic system is increased doubly

先进的臂架控制技术

Advanced boom control technology

高效臂架技术 Efficient boom technology

● 泵车展、收臂效率提高40%以上，高层布料范围增加30%以上
Boom unfolding and folding efficiency of boom pump can be improved by above 40%, and high-rise distribution range can be increased by more than 30%

卓越的臂架结构轻量化设计 Excellent lightweight design for boom structure

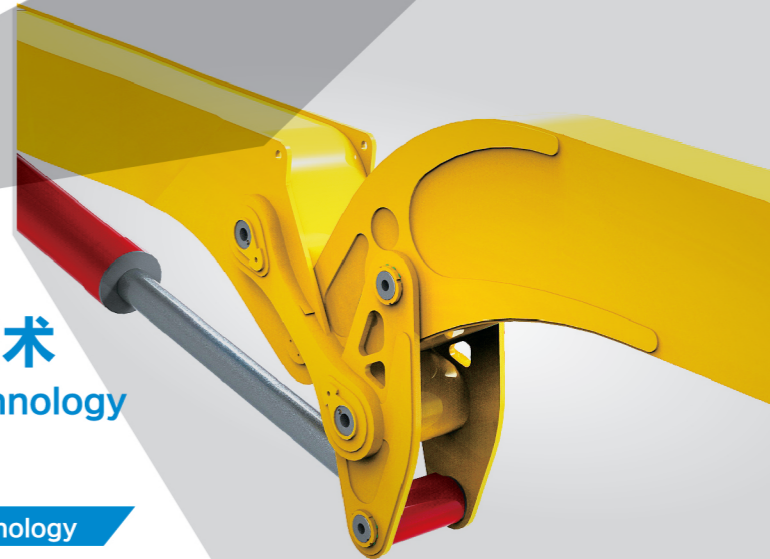
● 运用拓扑优化，为臂架设计找到最优的材料分布方案，有效控制臂架重量
The adoption of topological optimization finds optimal material distribution scheme for boom design and effectively controls boom weight

外置连杆技术 External link technology

● 有效降低臂架晃动量达35%
Boom shaking amount can be reduced by 35% effectively

臂架减震技术 Boom damping technology

● 臂架旋转摆动幅度降低70%，上下幅度控制在0.2m以内
Boom rotating and swing amplitude is reduced by 70%, with upper and lower range controlled within 0.2m



智能故障诊断技术

Intelligent Fault Diagnosis Technology

- 可自动精确定位225项故障，节省80%的故障排除时间
225 faults can be located automatically and accurately, with troubleshooting time less by 80%



弧形支腿技术

Arc-shaped outrigger technology

- 与X支腿相比，支腿变形小50%，抬腿量小52%，整车工作稳定性大幅提高
Compared with X-shaped outrigger, deformation of outrigger is reduced by 50%, and lift amount is decreased by 52%, thus greatly improving the vehicle working stability
- 采用液压式全自动支腿限位装置，安全可靠
The hydraulic full-auto outrigger limit device is used, safe and reliable
- 支腿结构及伸缩机构简单，可靠性高，使用寿命长
Outriggers and telescopic mechanism are simple, ensuring high reliability and long service life
- 超短跨距设计，一级弧形腿实现了两级X腿的功能，占地面积小
Short-span design is used, with one-level arc-shaped outrigger to achieve the function of two-level X-shaped outrigger, to ensure less floor space

产品参数 / Product parameters

HB52K 混凝土泵车 HB52k truck-mounted concrete boom pump

参数项目 Parameter item	单位 Unit	参数 Parameter
臂架折叠方式 Boom fold	—	6-RZ
最大布料高度 Max. placing height	m	51.5
泵送混凝土压力 Delivery pressure	MPa	7.4
最大理论输送量 Max. theoretical output	m ³ /h	170
输送缸直径 × 行程 Delivery cylinder Φ × stroke	mm	Φ 260 × 2000
发动机功率 Engine power	kW /(r/min)	301
底盘型号(驱动桥配置) Chassis Model(Drive axle configuration)	—	NXG5340THBW5X



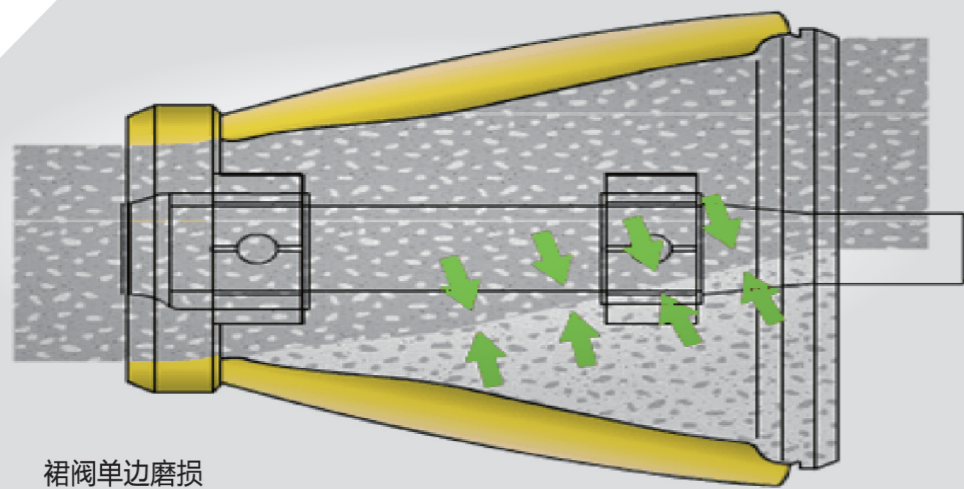
HB52K混凝土泵车 HB52k Truck-mounted Concrete Boom Pump

总体简介 / Product introduction

行业内三桥极致化混凝土泵车；采用弧形支腿伸缩技术、作业跨距小于同米数泵车，在狭窄空间区域更具优势；泵送系统应用裙阀技术以及全液压换向技术，使其在泵送过程中更加平稳、可靠、高效，同时大幅延长了易损件的使用寿命；并兼具轻量化、智能化控制、X-LINK 等自主创新技术，更智能化的作业规划以及便捷操作。



HB52K is a superlative three-axle truck-mounted concrete boom pump in the industry. By adopting arc-shaped outrigger telescoping technology and smaller operation span, it is more favorable for operation in narrow space. The pumping system adopts rock valve technology and full-hydraulic reversing technology, which makes pumping operation more stable, reliable and efficient, and meanwhile, greatly extends the service life of wearing parts. With such independent innovation as lightweight design, intelligent control and X-LINK, the product is more intelligent in operation planning and convenient and quick for operation.



裙阀单边磨损

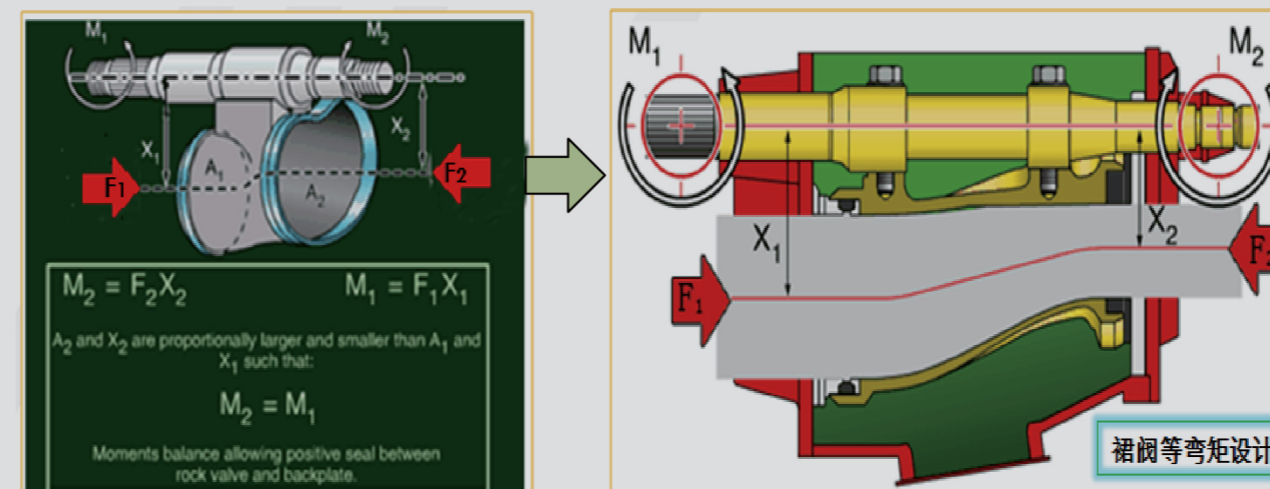
产品亮点 / Product Highlights



裙阀敞口式结构，堆焊修复方便

行业领先的裙阀泵送技术 Industry-leading rock valve pumping technology

- 采用等弯矩设计，受力均衡，密封可靠，阀体单边磨损，易损件寿命提升2倍以上
The use of equivalent bending moment design ensures balanced force, reliable sealing and unilateral wear of valve, and makes the service life of wearing parts increase by more than two times
- 耐磨层易于修复，可循环使用，寿命更长
Wearing layer is easily repairable and recyclable, which ensures longer service life
- 裙阀、料斗无积料，泵送阻力小，效率高
Rock valve and hopper are free of accumulated materials, with small pumping resistance and high efficiency



裙阀等弯矩设计