

# XS43

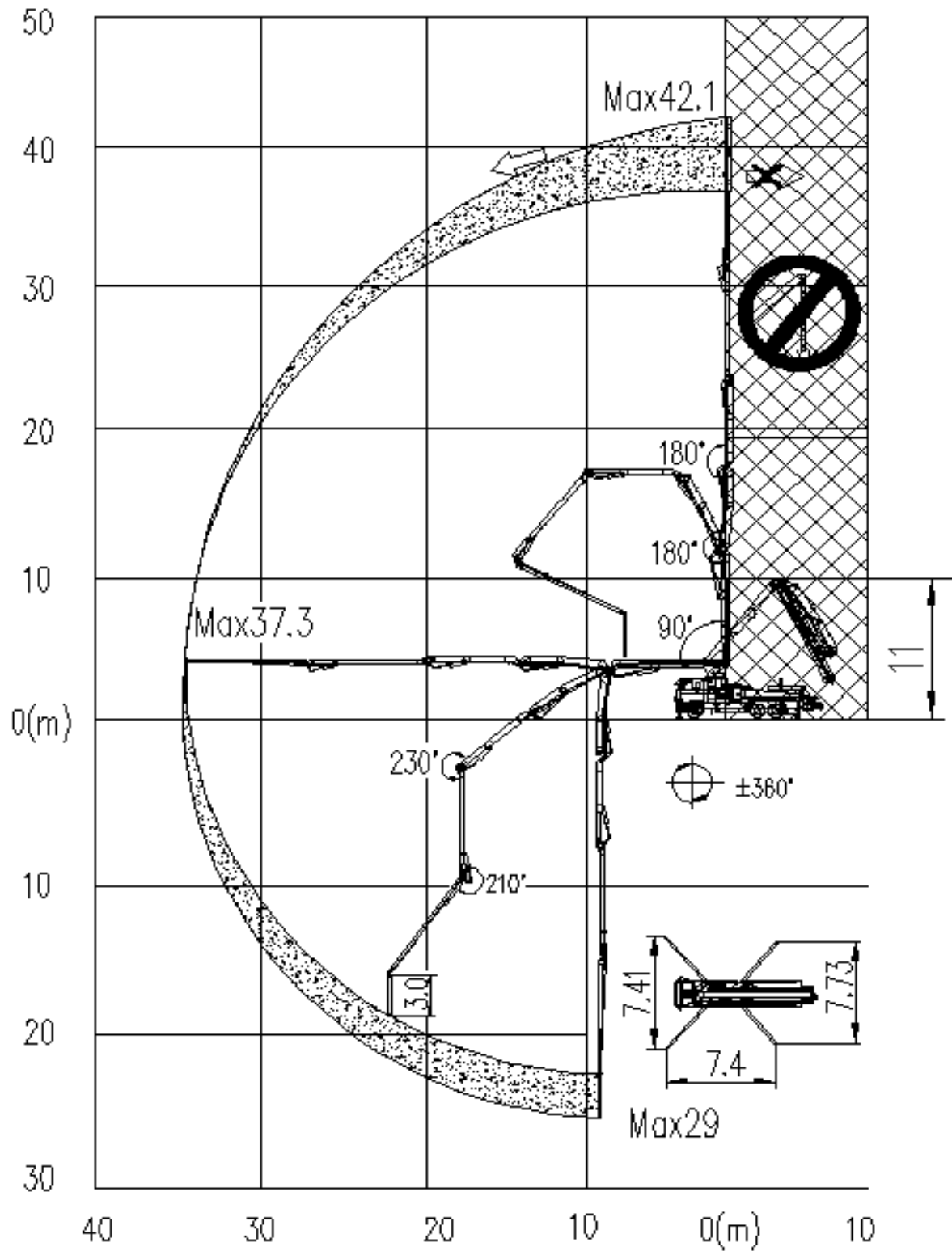
*Truck-mounted Concrete Boom Pump*



## Main Features

- Assembly on standard 3 axles chassis
- 5 sections placing boom, "RZ" folding system, FEM designed
- Fully hydraulic outrigger controls on both sides of the truck
- Front X-sharped outriggers and swing-out rear outriggers
- Pumping unit with open hydraulic circuit
- MPS (Micro Pressure Shock) reversing buffering technology
- ROCK valve transfer tube
- Large diameter slide valve with casting oil passage
- Intelligent electrical control system
- Remote / Manual control method for boom and pumping unit
- Centralized lubrication system for pumping unit
- Piston automatic return technology, easy to replace piston
- Main hydraulic pump overload protection technology
- Engine overload protection technology
- Engine low-speed protection technology
- Anti-tipping safety protection technology
- Lights system

# Operation range



# Main technical parameters

## 1. Pumping unit technical data

Item		Parameters
Theoretical output (high/low pressure)	m <sup>3</sup> /h	120
Delivery pressure	MPa	8
Maximum aggregate diameter	mm	≤40
Concrete cylinder(diameter×stroke)	mm	Φ230×1600
Filling height	mm	1580
Hopper capacity	L	600
Hydraulic circuit		Open
Transfer tube		Rock valve

## 2. Placing boom technical data

Item		Parameters	
Max. vertical reach	m	42.1	
Max. horizontal distance (from center of slewing axis)	m	37.3	
Reach depth	m	29	
Pipeline diameter	mm	125	
Section numbers		5	
1 <sup>st</sup> section unfolding angle		90°	
2 <sup>nd</sup> section unfolding angle		180°	
3 <sup>rd</sup> section unfolding angle		180°	
4 <sup>th</sup> section unfolding angle		230°	
5 <sup>th</sup> section unfolding angle		210°	
Rotating angle of the placing boom		±360°	
Stabilizer span	Longitudinal span	mm	7400
	Front stabilizer transverse span	mm	7410
	Rear stabilizer transverse span	mm	7730

### 3. Technical data for travel

Chassis brand	<b>Sinotruk</b>
Chassis model	HOWO
Overall dimensions (L×W×H)	11120×2500×4000mm
Overall weight	29000kg
Axle numbers	3
Wheelbase	4400+1400 mm
Engine Model	MC07H.35-50
Max. Power	350HP
Displacement of Engine	7.36L
Emission standard	Euro III or Euro V

---

*Technical data and characteristics subject to modifications without notice*

XUZHOU XCMG SCHWING CO., LTD  
No.29 Taoshan Rd, Xuzhou, Jiangsu, China  
Tel: +86 516 83111590  
Fax: +86 516 87892035  
[www.xcmg.com](http://www.xcmg.com)  
© by XCMG | All rights reserved