

XS50

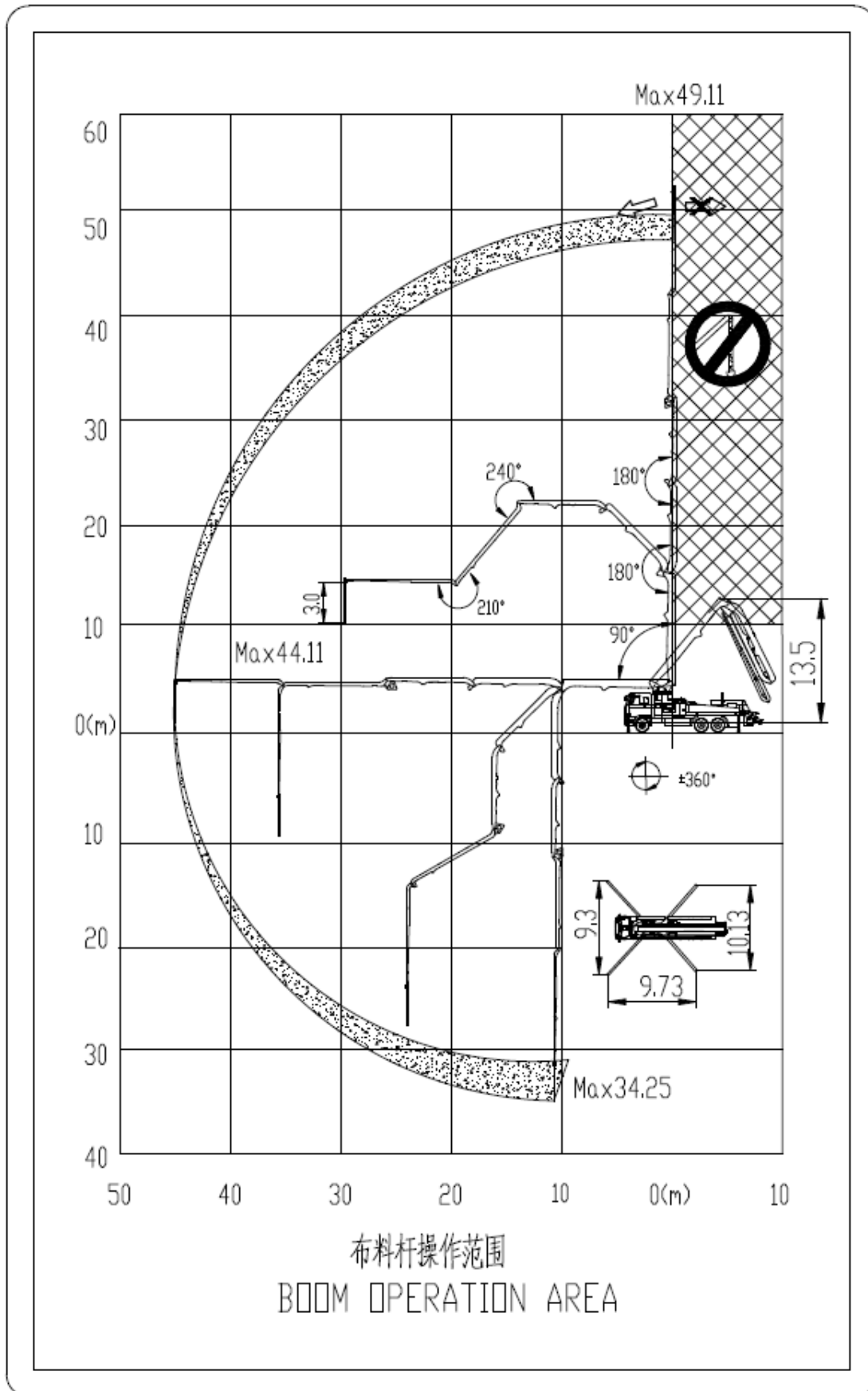
Truck-mounted Concrete Boom Pump



Main Features

- Assembly on standard 4 axles chassis
- 5 sections placing boom, "RZ" folding system, FEM designed
- Fully hydraulic outrigger controls on both sides of the truck
- Front X-sharped outriggers and swing-out rear outriggers
- SCHWING TECH main hydraulic valve
- Pumping unit with open hydraulic circuit
- Electrical switchover system
- MPS (Micro Pressure Shock) reversing buffering technology
- ROCK valve transfer tube
- Large diameter slide valve with casting oil passage
- Intelligent electrical control system
- Remote / Manual control method for boom and pumping unit
- Centralized lubrication system for pumping unit
- Piston automatic return technology, easy to replace piston
- Main hydraulic pump overload protection technology
- Engine overload protection technology
- Engine low-speed protection technology
- Anti-tipping safety protection technology
- Lights system

Operation range



Main technical parameters

1. Pumping unit technical data

Item		Parameters
Theoretical output (high/low pressure)	m ³ /h	170
Delivery pressure	MPa	10.2
Maximum aggregate diameter	mm	≤40
Concrete cylinder(diameter × stroke)	mm	Φ260×2000
Filling height	mm	1580
Hopper capacity	L	600
Hydraulic circuit		Open Type
Transfer tube		Rock valve
Main hydraulic valve brand		Rexroth
Remote control brand		XCMG

2. Placing boom technical data

Item		Parameters
Max. vertical reach	m	49.11
Max. horizontal distance (from center of slewing axis)	m	44.11
Reach depth	m	34.25
Pipeline diameter	mm	125
Section numbers		5
1 st section unfolding angle and length		90° / 9860mm
2 nd section unfolding angle and length		180° / 7700mm
3 rd section unfolding angle and length		180° / 7600mm
4 th section unfolding angle and length		240° / 9900mm
5 th section unfolding angle and length		210° / 9942mm
Rotating angle of the placing boom		±360°
Stabilizer span	Longitudinal span	mm 9731
	Front stabilizer transverse span	mm 9300
	Rear stabilizer transverse span	mm 10133

3. Technical data for travel

Chassis brand	Sinotruk-HOWO
Chassis model	ZZ5357TXFV464ME1
Overall dimensions (L×W×H)	12060×2550×4000mm
Overall weight	33000kg
Axle numbers	3
Wheelbase	4800+1400 mm
Tire	315/80R22.5
Engine Model	MC11.44-50
Max. Power	440HP
Displacement of Engine	10.518L
Emission standard	Euro III / Euro V

Technical data and characteristics subject to modifications without notice

XUZHOU XCMG SCHWING CO., LTD
No.29 Taoshan Rd, Xuzhou, Jiangsu, China
Tel: +86 516 83111590
Fax: +86 516 87892035
www.xcmg.com
© by XCMG | All rights reserved