

XS72

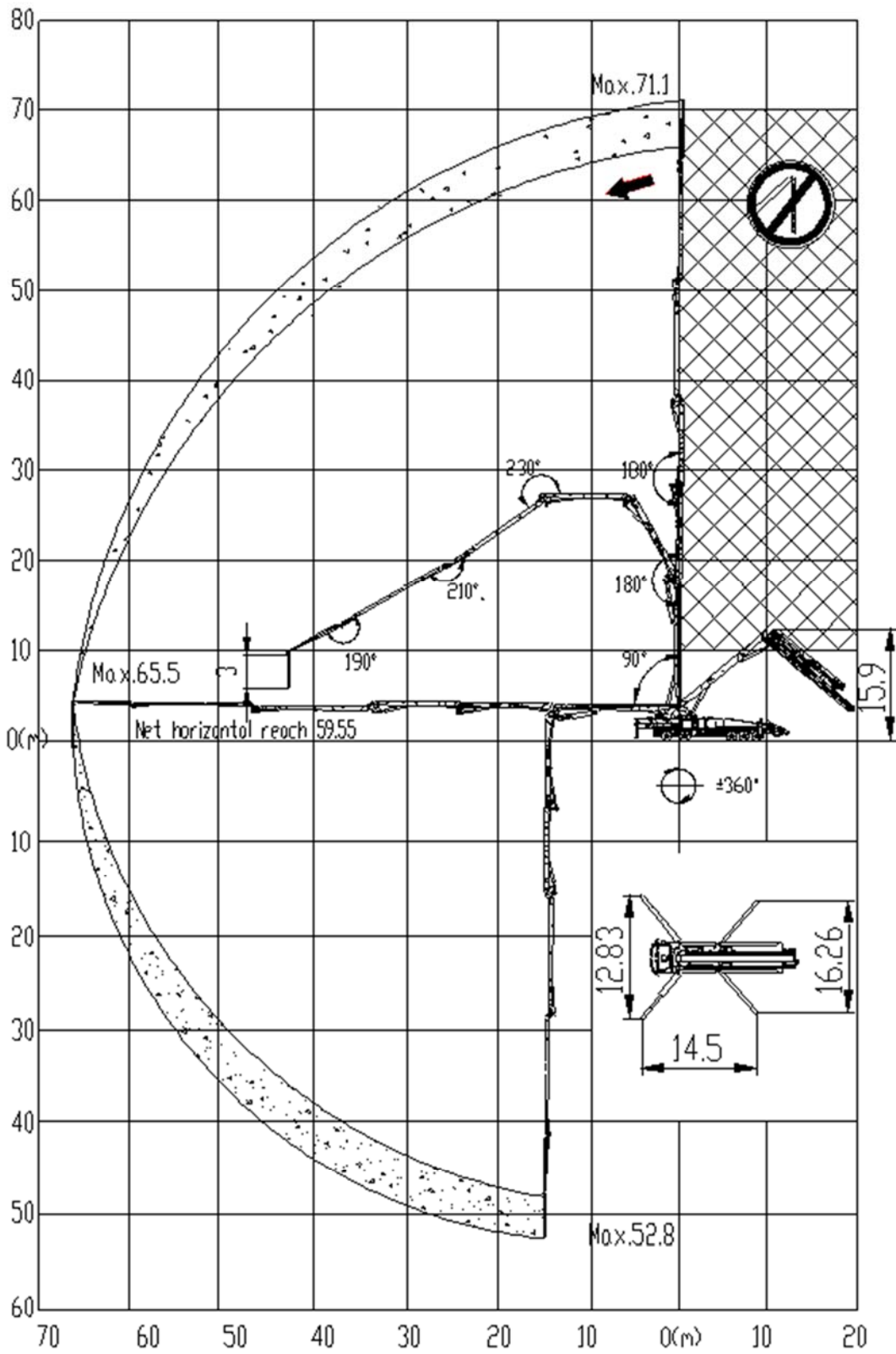
Truck-mounted Concrete Boom Pump



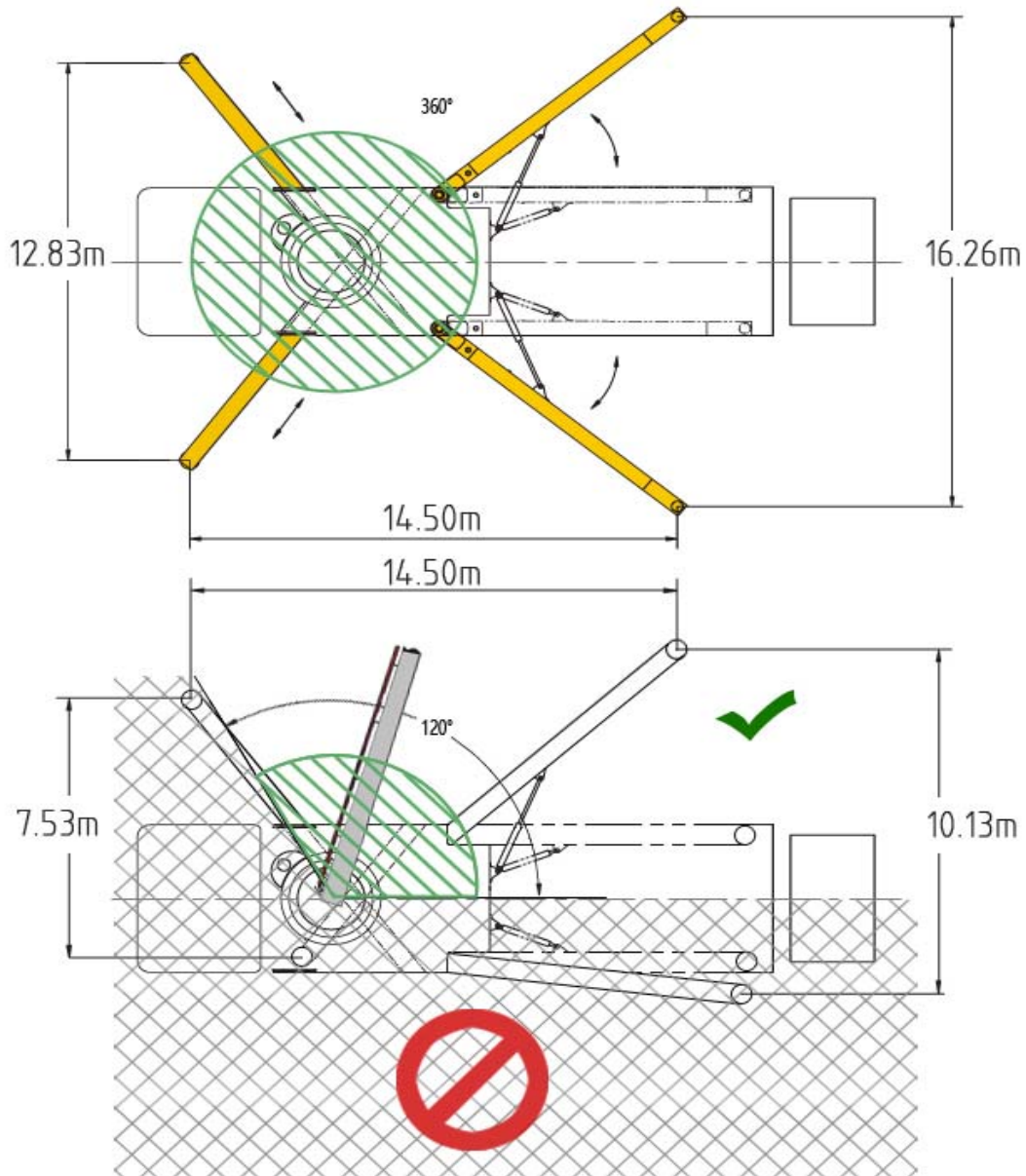
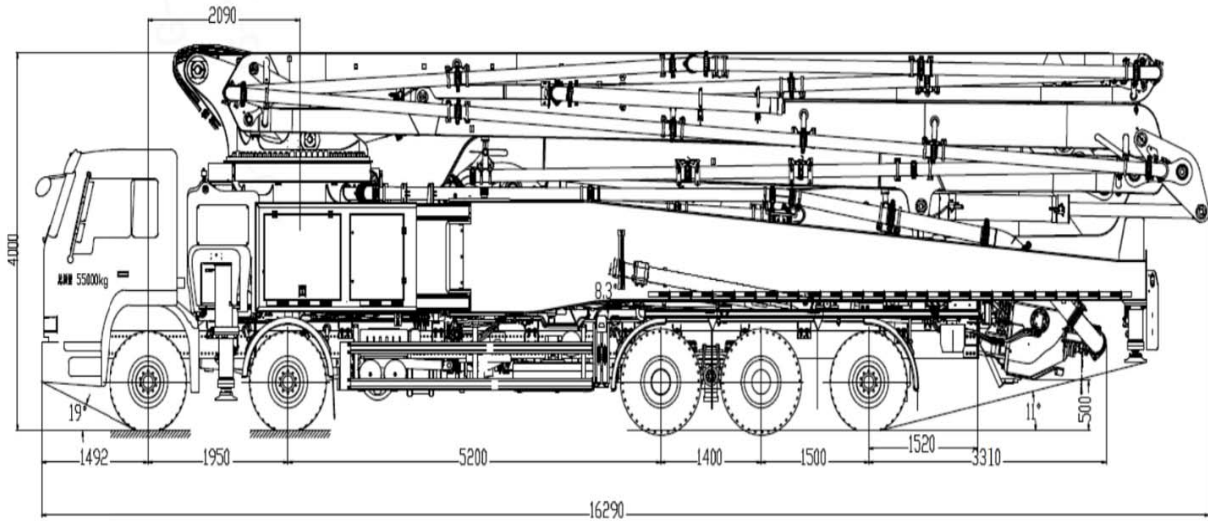
Main Features

- Assembly on standard 5 axles SITRAK chassis
- 6 sections placing boom, "RZR" folding system, FEM designed
- Front 3 levels X outrigger and swing-out rear outriggers
- Pumping unit with open hydraulic circuit
- MPS (Micro Pressure Shock) reversing buffering technology
- Rock valve transfer tube
- Large diameter slide valve with casting oil passage
- Intelligent electrical control system
- Remote / Manual control method for boom and pumping unit
- Centralized lubrication system for pumping unit
- Piston automatic return technology, easy to replace piston
- Main hydraulic pump overload protection technology
- Engine overload protection technology
- Engine low-speed protection technology
- Anti-tipping safety protection technology
- Automatic mixing switchover technology

➤ Operation Range



布料杆操作范围
BOOM OPENING AREA



Main technical parameters

1. Pumping unit technical data

Item		Parameters
Theoretical output	m ³ /h	170
Delivery pressure	MPa	10.2
Maximum aggregate diameter	mm	≤40
Concrete cylinder(diameter×stroke)	mm	Φ260×2000
Filling height	mm	1580
Hopper capacity	L	600
Hydraulic circuit		Open
Transfer tube		Rock valve
Concrete slump	mm	80-230
Main pump brand		Rexroth190+190
Remote controls brand		HBC
Main hydraulic valve		XCMG SCHWING

2. Placing boom technical data

Item		Parameters
Max. vertical reach	m	71.1
Max. horizontal distance (from center of slewing axis)	m	65.5
Reach depth	m	52.8
Pipeline diameter	mm	125
Section numbers		6RZR
1 st section unfolding angle		90°
2 nd section unfolding angle		180°
3 rd section unfolding angle		180°
4 th section unfolding angle		230°
5 th section unfolding angle		210°
6 th section unfolding angle		190°
Rotating angle of the placing boom		±360°

Stabilizer span	Longitudinal span	mm	14500
	Front stabilizer transverse span	mm	12830
	Rear stabilizer transverse span	mm	16260

3. Technical data for travel

Chassis brand	Sinotruk
Chassis model	SITRAK
Overall dimensions (L×W×H)	16290×2550×4000
Overall weight	55000kg
Axle numbers	5
Wheelbase	1950+5200+1400+1500 mm
Tire	1/2/5 385/65 R22.5 (20PR) 3/4 315/80 R22.5 (18PR)
Engine Model	MC13.54-50
Max. Power	540HP
Displacement of Engine	12.419 L
Emission standard	Euro III / Euro V

Technical data and characteristics subject to modifications without notice

XUZHOU XCMG SCHWING MACHINERY CO., LTD

No.29 Taoshan Rd, Xuzhou, Jiangsu, China

Tel: +86 516 83111590

Fax: +86 516 87892035

www.xcmg.com

© by XCMG | All rights reserved