

# XT670-140 伸缩臂叉装机

## Telescopic Handlers

# XT670-140 伸缩臂叉装机

## Telescopic Handlers



中国名牌产品



XT670-140 伸缩臂叉装机		XT670-140 Telescopic Handlers			
项目	Description		参数 Specifications	单位 Unit	
整机重量	Working weight		10500	kg	
发动机功率	道依茨	Engine power	Deutz	70	kW
	帕金斯		Perkins	74.5	kW
最大有效载荷	Max. capacity		3500	kg	
最大高度限度内的载荷	Max. lift capacity to full height		3100	kg	
最大伸长量下的有效载荷	Max. lift capacity at full reach		635	kg	
举升高度	Lifting height		13700	mm	
最大高度时的伸长量	Max. reach at full height		1050	mm	
向前最大伸出量	Max. forward reach		9460	mm	
轴距	Wheel base		3250	mm	
轮距	Tread		1970	mm	
最小离地间隙	Min. ground clearance		370	mm	
整机长度 (后端至叉齿根部)	Overall length(backend to fork)		6290	mm	
主机最大长度 (尾部到前轮胎前面)	Max. length(tail to the front tires)		5078	mm	
主机最大宽度 (包括支腿)	Max. width(including outrigger)		2500	mm	
主机最大高度 (包括灯)	Max. height(including toplight)		2600	mm	
货叉长度	Fork length		1200	mm	
后悬长度	Length of suspension		1191	mm	
车架横向调整角	左	Adjust angle of frame	Left	10	°
	右		Right	10	°
离去角	Departure angle		36	°	
属具架前倾角	Front tilt angle of attachments		90	°	
属具架后倾角	Back tilt angle of attachments		18	°	
伸缩臂最大俯角 (支腿收起)	Max. depression angle(outrigger not on ground)		-4	°	
最大仰角 (支腿撑地)	Max. elevation(outriggers on ground)		73	°	
驾驶室内部宽度	Cab internal width		945	mm	
最大牵引力 (无载荷)	Max. traction(without load)		48	kN	
最小转弯半径 (轮胎外侧)	Min. turning radius(tires lateral)		4238	mm	
最大爬坡能力	Max. climbing ability		30	°	
脚制动型式/制动油压	Foot brake type/brake hydraulic		湿式/4.5	MPa	
手制动型式	Hand brake type		湿式		
行驶速度	前进 I 挡	Traveling speed	Forward I	9.52	km/h
	前进 II 挡		Forward II	23	km/h
	后退 I 挡		Back I	9.52	km/h
	后退 II 挡		Back II	23	km/h

随技术进步,产品结构、参数将不断改进,恕不另行通知。  
Structure and specification are subject to change without notice.



**徐州徐工特种工程机械有限公司**  
XUZHOU XUGONG SPECIAL CONSTRUCTION MACHINERY CO.,LTD

徐工集团统一客服电话: 4001109999

地址: 中国江苏省徐州市金山桥经济开发区广德路西侧  
Add:Guangde Road(w),Xuzhou Economic Development Zone,Jiangsu,CN.

销售处电话(Tel): 0516-85554212/87899099 配件处电话(Tel): 0516-85554213  
传真(Fax): 0516-85761842 传真(Fax): 0516-85768427  
服务处电话(Tel): 0516-87560282 邮编(Postcode): 221004  
网址:Http://www.xcmgtj.com 传真(Fax): 0516-85754037

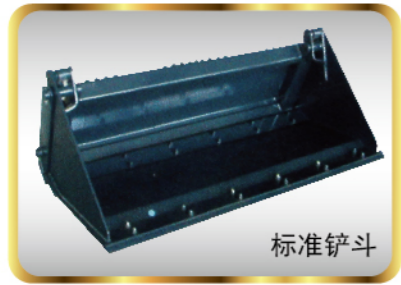
20120606



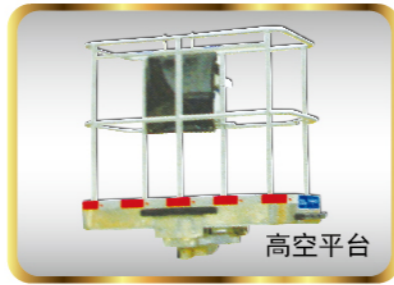
**XCMG 徐工集团**

# XT670-140 伸缩臂叉装机

## Telescopic Handlers



标准铲斗



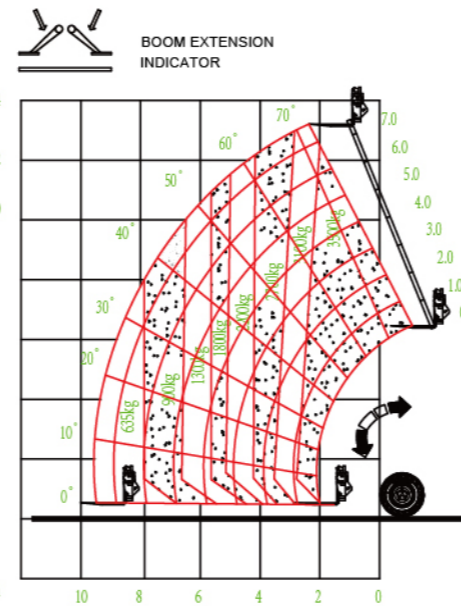
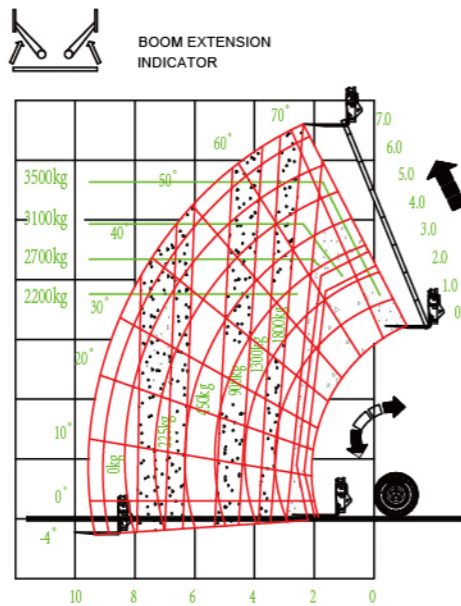
高空平台



### 特点综述

#### FEATURES

XT670-140伸缩臂叉装机是一种多用途起重搬运设备，集稳定性和高工效于一身，适合于多种物料搬运环境。本机结构紧凑，操纵灵活，举升灵敏，自动调平、净载重负荷指标高、叉运精准。XT670-140 Telescopic Handlers is a kind of Multi-functional engineering machinery. It can be used for lift and carry, with good stability and efficiency. It has compact frame, flexible operation, sensitive lift, automatic adjustment, high carrying capacity.



### 性能特点

#### SPECIFICATIONS AND CHARACTERS



①

**1** 动力采用潍柴道依茨和原装帕金斯发动机，配套成熟、多样，满足不同客户全体需求。  
Adopt the Weichai Deutz or Perkins engine which is supporting mature and diversify, meanwhile, can meet different customers' needs.



①

**2** 静液压传动系统，无极变速、换向方便、控制方式多样，具有良好的低速负荷特性，传递效率高。  
Equipped with Hydrostatic transmission, infinitely variable, commutation, good low-speed load ,high transfer efficiency and diverse control mode .



③

**3** 整体式车架，转弯半径小，机动性能好。  
Integral frame, small turning radius.

**4** 车架可调平（左右10°）  
Vehicle frame can be adjusted(left and right 10°)



④

**5** 湿式制动桥，制动平稳，保证行车安全。  
Fully sealed wet multi-disc brakes in the wheel heads are protected from environmental influences.

**6** 驾驶室视野开阔、密封减振，可配备冷暖空调，具有操作环境舒适、安全等优点。可调式座椅为司机提供最大的舒适度。  
The driver's cabin is furnished with the system of the air conditioner. It is safe and comfortable, and the visual field is broad. It adopts shock attenuation, which improved the comportableness of the operating.



⑤

**7** 具有四轮驱动、两轮转向、四轮原地转向及蟹行多种转向模式，越野能力强。  
Wheel drive, steering by front wheel, and so on.



⑥

