

XT680-170 伸缩臂叉装机

Telescopic Handlers

XT680-170 伸缩臂叉装机

Telescopic Handlers



XT680-170 伸缩臂叉装机		XT680-170 Telescopic Handlers			
项目	Description	参数 Specifications	单位 Unit		
整机重量	Working weight	13600	kg		
发动机功率	Engine power	82	kW		
最大有效载荷	Max. capacity	4500	kg		
最大高度限度内的载荷	Max. lift capacity to full height	2269	kg		
最大伸长量下的有效载荷	Max. lift capacity at full reach	453	kg		
举升高度	Lifting height	16700	mm		
最大高度时的伸长量	Max. reach at full height	1063	mm		
向前最大伸出量	Max. forward reach	12600	mm		
轴距	Wheel base	3900	mm		
轮距	Tread	2060	mm		
最小离地间隙	Min. ground clearance	400	mm		
整机长度(后端至叉齿根部)	Overall length(backend to fork)	6890	mm		
主机最大长度(尾部到前轮胎前面)	Max. length(tail to the front tires)	5680	mm		
主机最大宽度(包括支腿)	Max. width(including outrigger)	2500	mm		
主机最大高度(包括灯)	Max. height(including toplight)	2815	mm		
货叉长度	Fork length	1200	mm		
后悬长度	Length of suspension	1055	mm		
车架横向调整角	左	Adjust angle of frame	Left	10	°
	右		Right	10	°
离去角	Departure angle	46	°		
属具架前倾角	Front tilt angle of attachments	90	°		
属具架后倾角	Back tilt angle of attachments	18	°		
伸缩臂最大俯角(支腿收起)	Max. depression angle(outrigger not on ground)	-4	°		
最大仰角(支腿撑地)	Max. elevation(outriggers on ground)	73	°		
驾驶室内部宽度	Cab internal width	945	mm		
最大牵引力(无载荷)	Max. traction(without load)	74.73	kN		
最小转弯半径(轮胎外侧)	Min. turning radius(tires lateral)	4860	mm		
最大爬坡能力	Max. climbing ability	33.2	°		
脚制动型式/制动油压	Foot brake type/brake hydraulic	湿式/4.4	MPa		
手制动型式	Hand brake type	湿式			
行驶速度	前进 I 挡	Forward I	6.41	km/h	
	前进 II 挡	Forward II	10.64	km/h	
	前进 III 挡	Forward III	22.0	km/h	
	前进 IV 挡	Traveling speed Forward IV	37.17	km/h	
	后退 I 挡	Back I	6.37	km/h	
	后退 II 挡	Back II	10.59	km/h	
	后退 III 挡	Back III	21.8	km/h	
	后退 IV 挡	Back IV	37.04	km/h	

随技术进步,产品结构、参数将不断改进,恕不另行通知。
Structure and specification are subject to change without notice.



徐州徐工特种工程机械有限公司
XUZHOU XUGONG SPECIAL CONSTRUCTION MACHINERY CO.,LTD

徐工集团统一客服电话: 4001109999

地址: 中国江苏省徐州市金山桥经济开发区广德路西侧
Add: Guangde Road(w), Xuzhou Economic Development Zone, Jiangsu, CN.

销售处电话(Tel): 0516-85554212/87899099 配件处电话(Tel): 0516-85554213

传真(Fax): 0516-85761842

传真(Fax): 0516-85768427

服务处电话(Tel): 0516-87560282 邮编(Postcode): 221004

传真(Fax): 0516-85754037

网址: Http://www.xcmgtj.com

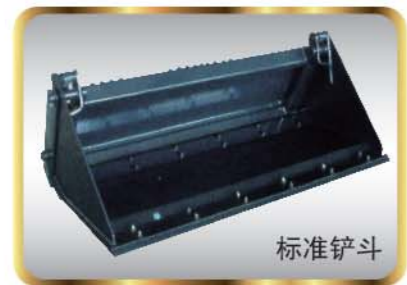
20120210



XCMG 徐工集团

XT680-170 伸缩臂叉装机

Telescopic Handlers



标准铲斗



高空平台

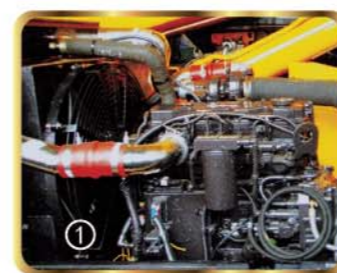
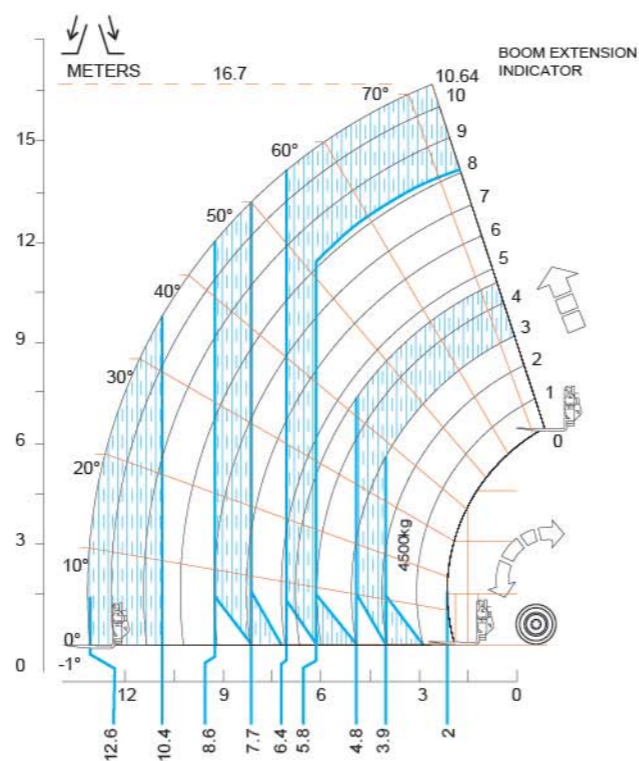


特点综述

FEATURES

XT680-170伸缩臂叉装机是一种多用途起重搬运设备，集稳定性和高工效于一身，适合于多种物料搬运环境。本机结构紧凑，操纵灵活，举升灵敏，自动调平、净载重负荷指标高、叉运精准。

XT680-170 Telescopic Handlers is a kind of Multi-functional engineering machinery. It can be used for lift and carry, with good stability and efficiency. It has compact frame, flexible operation, sensitive lift, automatic adjustment, high carrying capacity.



性能特点

SPECIFICATIONS AND CHARACTERS

- 动力采用美国原装康明斯发动机，电控、电喷、高压共轨、空空中冷四缸机，噪音低，低排放（达到EC（NRMM）EPA Tier3排放标准），动力强劲，扭矩储备大。
Adopt the Commins engine which is powerful and with low maintenance. Reach Europe III (EPA Tier3) exhaust standard, big torque force.
- 叉装机专用电控变速箱，结构紧凑，传动效率高，结构刚性大，寿命长。
Equipped with power transmission, compact structure, high rigidity.
- 整体式车架，转弯半径小，机动性能好。
Integral frame, small turning radius.
- 车架可调平（左右10°）
Vehicle frame can be adjusted(left and right 10°)
- 湿式制动桥，制动平稳，保证行车安全。
Fully sealed wet multi-disc brakes in the wheel heads are protected from environmental influences.
- 驾驶室视野开阔、密封减振，可配备冷暖空调，具有操作环境舒适、安全等优点。
可调式座椅为司机提供最大的舒适度。
The driver's cabin is furnished with the system of the air conditioner. It is safe and comfortable, and the visual field is broad. It adopts shock attenuation, which improved the comportableness of the operating.
- 具有四轮驱动、两轮转向、四轮原地转向及蟹行多种转向模式，越野能力强。
Wheel drive, steering by front wheel, and so on.

