

---

# Product Specifications

CGXS-2026

## Ultrasonic wire harness welding machine



---

# Table of contents

1.1	Equipment Overview .....	3
1.2	Equipment Features .....	4
1.3	Welding effect demonstration .....	4
1.4	Equipment technical parameters .....	5
1.5	Equipment Structure .....	5
1.6	Equipment configuration .....	6
1.7	Service .....	7
1.8	Application Area .....	7

---

## 1.1 Equipment Overview

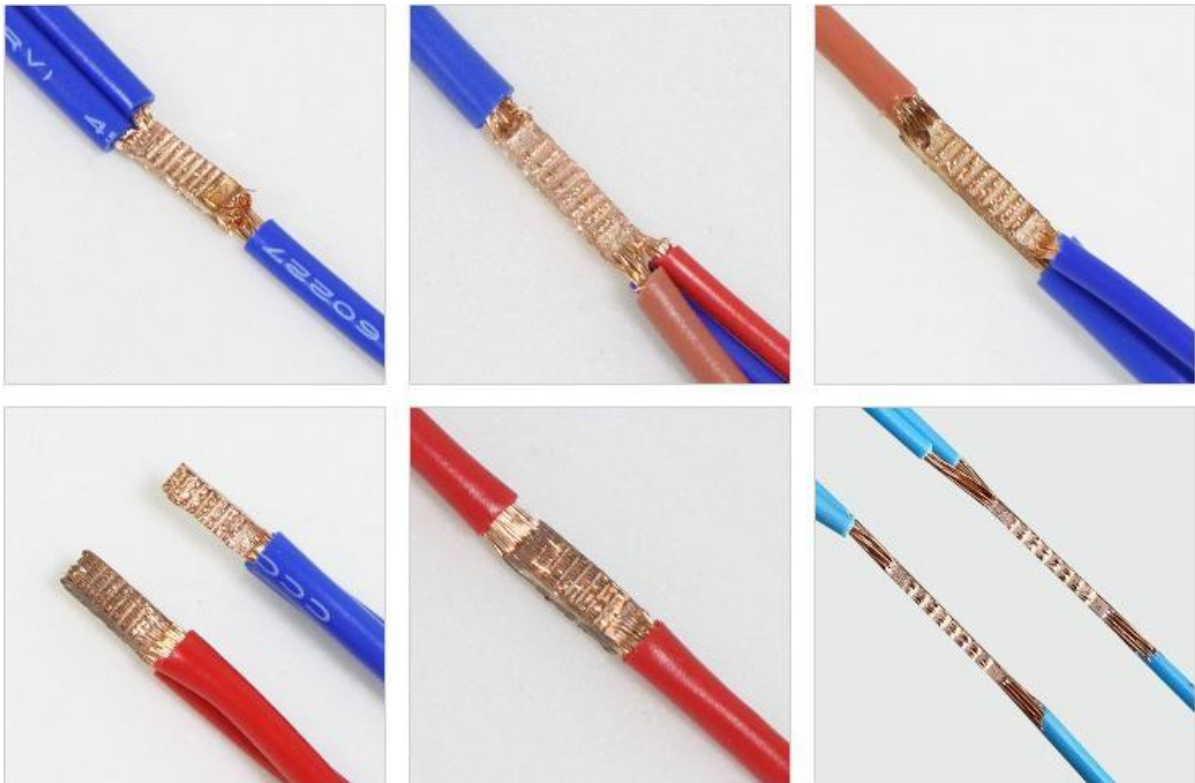
The CGXS-2026 ultrasonic wire harness welding machine is an economical, portable welding machine with an integrated design. It boasts a sleek and lightweight appearance , small footprint, safe and simple operation, and low maintenance costs, providing businesses with an efficient welding method and reducing production costs. It is suitable for welding copper/aluminum wire harnesses ranging from 0.35mm<sup>2</sup> to 16mm<sup>2</sup> and is widely used in various fields such as automotive, instrumentation, communication equipment, and home appliances .



## 1.2 Equipment Features

- ☑ High-quality imported ultrasonic transducers, powerful and stable.
- ☑ It boasts high welding speed and energy efficiency, completing a weld within 10 seconds .
- ☑ Easy to operate, no auxiliary materials required
- ☑ Supports multiple welding modes
- ☑ Preventing dry welding and effectively preventing damage to the welding head
- ☑ High-definition LED displays provide intuitive data and real-time monitoring, effectively ensuring high welding yield.

## 1.3 Welding effect display



## 1.4 Equipment technical parameters

Equipment Model	CGXS-2026
Operating Frequency	20KHz
Frame Dimensions	517*142*181 (mm)
Chassis Dimensions	453*300*165 (mm)
Input Voltage	AC 220V/50Hz
Welding Wire Harness	0.35mm <sup>2</sup> —16mm <sup>2</sup> copper wire, aluminum wire
Welding Copper (Aluminum) Wire Diameter	≤ Φ0.12~0.3mm
Equipment Power	2600W
Equipment Weight	25kg (welding frame) + 10kg (electrical box)
Display	4.3-inch LCD screen + button adjustment control
Production Efficiency	Approximately 0.6s/cycle, depending on the welding cross-section
Core Components	Generator, transducer, welding head
Moving Components	Cylinder

## 1.5 Equipment Structure

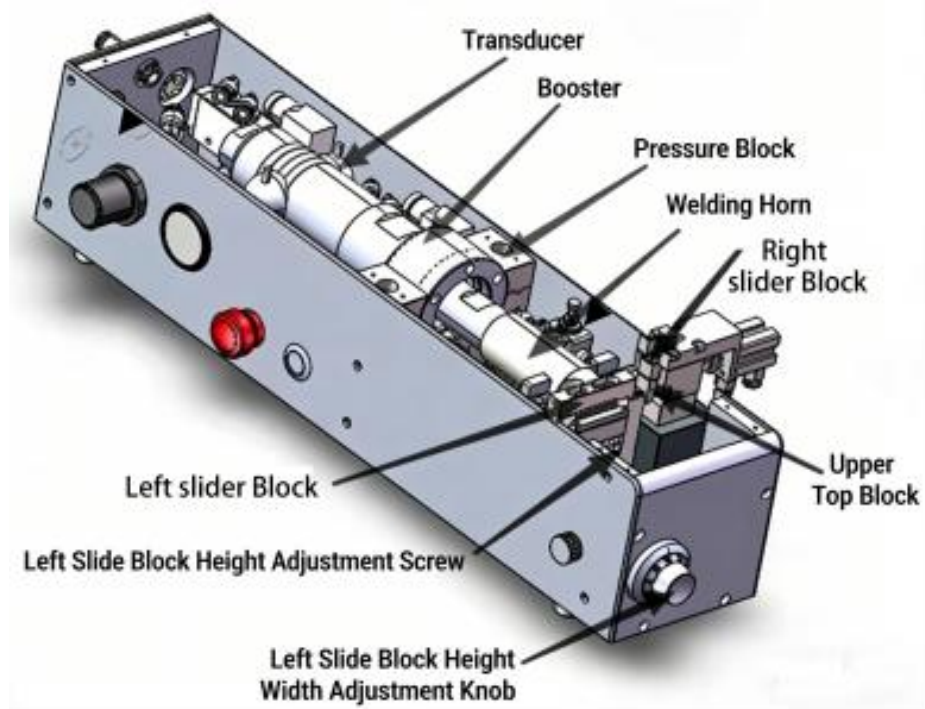


Figure (1) CGXS-2026 Ultrasonic Wire Harness Welding

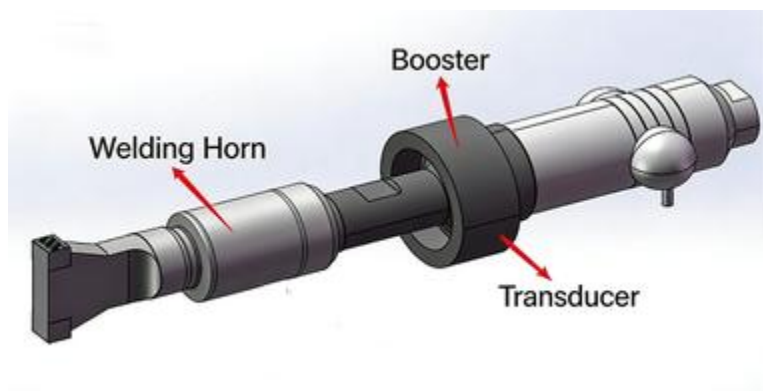


Figure (2) Welding core components

## 1.6 Device configuration

Serial Number	Product name	Parameters	Brand
1	Generator	220V/50Hz/2Kw Ultrasonic Generator	CGSONIC
2	Transducer	20KHz/2Kw Transducer	CGSONIC
3	Amplitude Modulator	20KHz/Amplitude Modulator	CGSONIC
4	Welding Head Set (4 Pieces)	High-Speed Powder Steel	CGSONIC
5	Screen + Buttons	4.3-inch LCD Screen + Button Adjustment Control	/
6	Cylinder	Standard Part	Airtac
7	Guide Post	Coupling Standard Part	MISUMI
<b>List of Wear Parts</b>			
序号	名称	Service Life	
1	Welding Head Set (4 Pieces)	100,000 cycles (repairable once per wear condition)	

## 1.7 Serve

- ☑ The equipment is covered by a lifetime warranty from the date of purchase (excluding consumable parts).
- ☑ Free technical support and 24- hour hotline service are provided.
- ☑ If the equipment malfunctions within the warranty period, our company will respond within 24 hours of receiving the notification.
- ☑ If equipment malfunctions outside the warranty period, our company will provide free technical support.

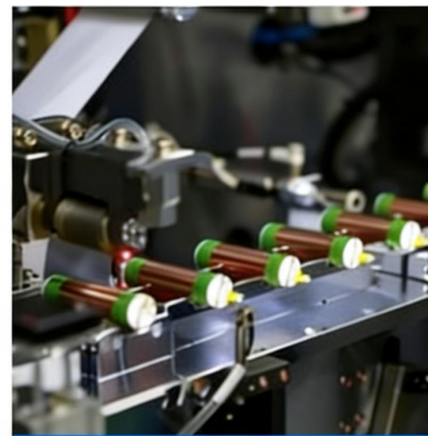
## 1.8 Application areas



>Automotive Industry<



>Medical Industry<



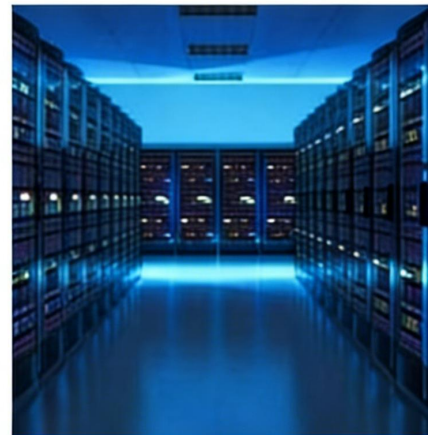
>Battery Industry<



>Home Appliance Industry<



>Aerospace Industry<



>Data Transmission<