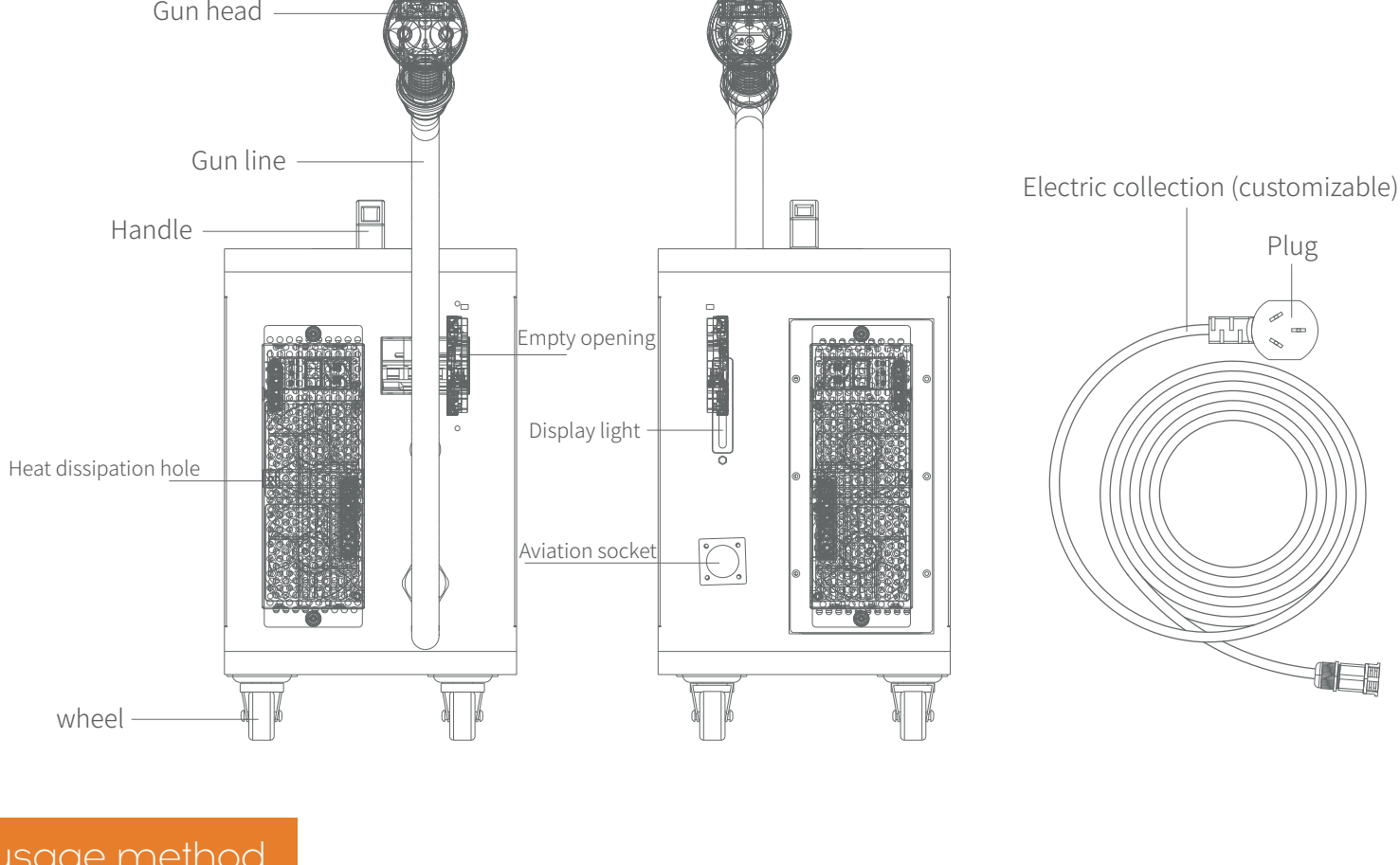
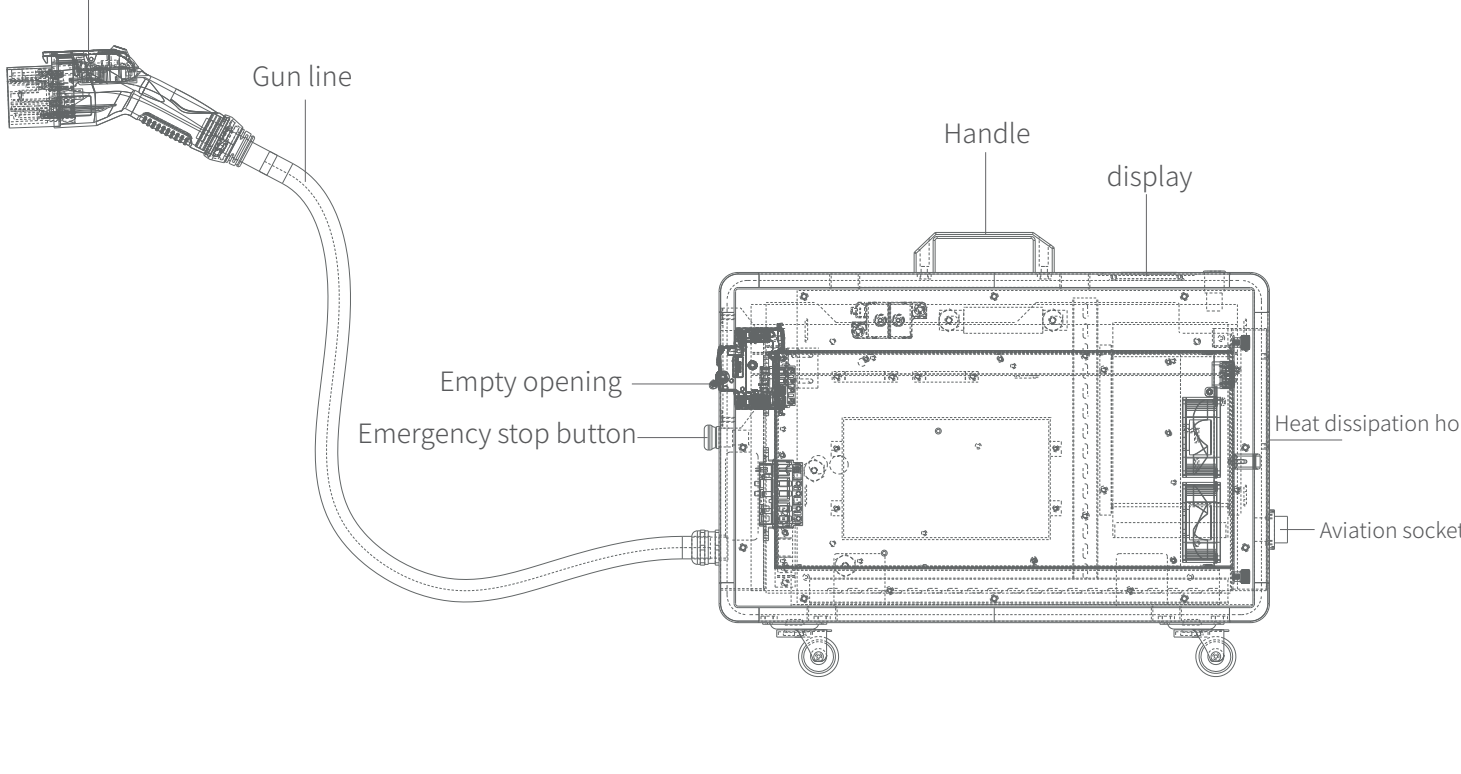


# DC small DC 20KW movable charging station

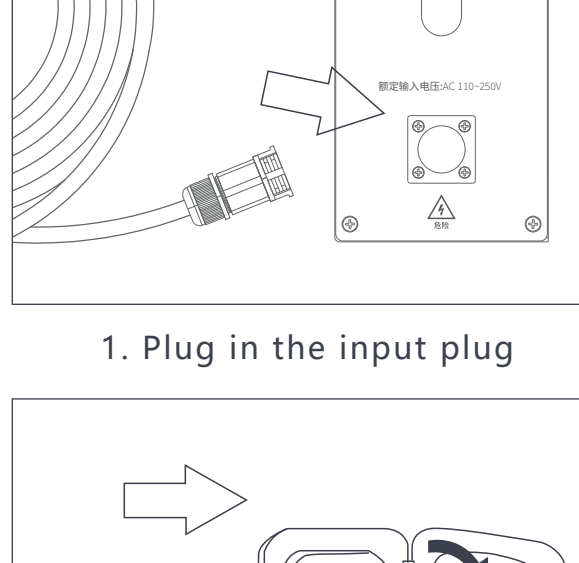


## Parameter/specification sheet

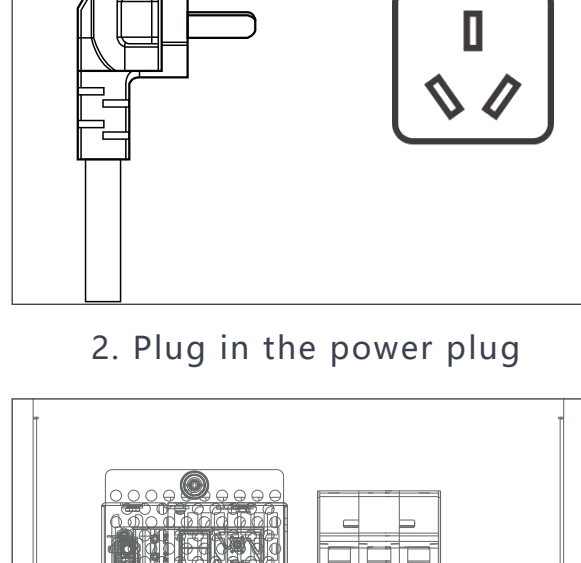
Rated input voltage :DC200-1000V(额定1000V)
Input current :DC 0-66A(额定 20A)
Rated output power :20KW
Charging method: Scan code for charging
Protection functions: overvoltage, undervoltage, overcurrent, short circuit, leakage protection, etc
IP Rating :IP54
Charging Port :GB/T 20234.2-2015
Cable Length :3 meters (can be customization)
Working Environment:Max. altitude: <2000m, temperature: -20 °C~65 °C, derating work above 50 °C
Dimension:580mm*240mm*500mm(length * width * height), excluding wheels
Number of charging guns: 1
Human computer interaction: 4.3-inch touch screen
Working Temperature :-25°C to 40°C
Relative Humidity :5% - 95% RH (non-condensing)
Communication Protocols :OCPP 1.6 / OCPP 2.0
Output Standard :GB/T
Design standard: GB/T 18487.1



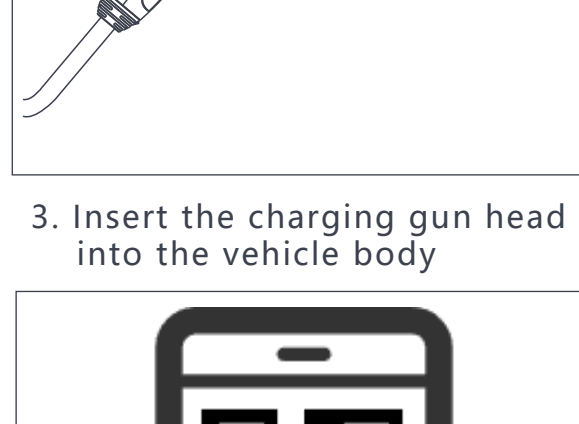
## usage method



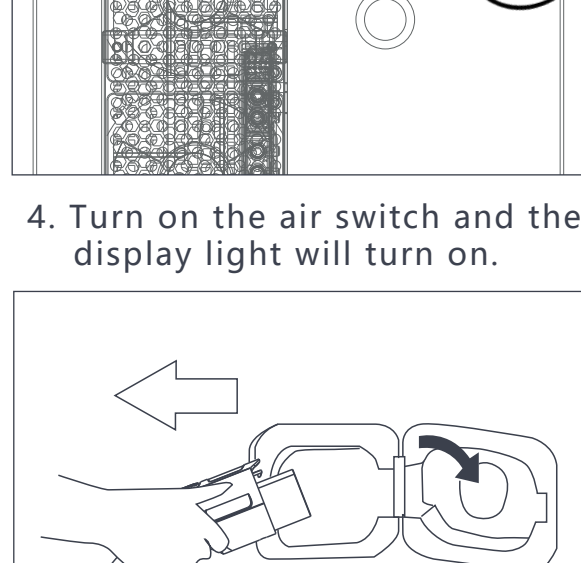
1. Plug in the input plug



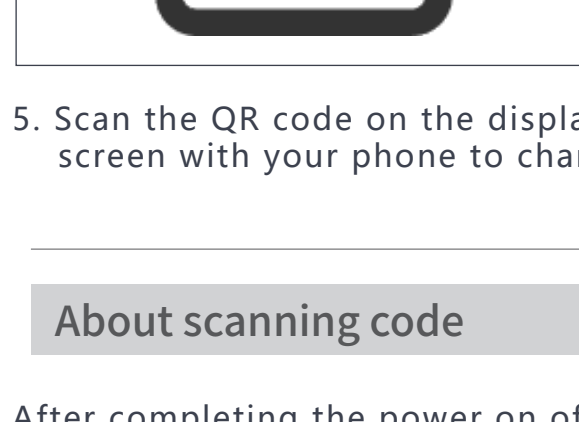
2. Plug in the power plug



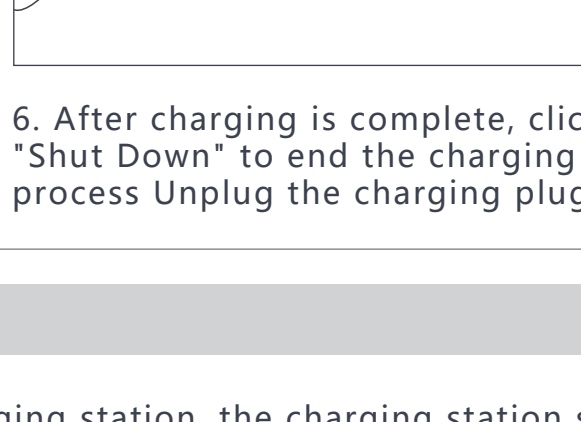
3. Insert the charging gun head into the vehicle body



4. Turn on the air switch and the display light will turn on.



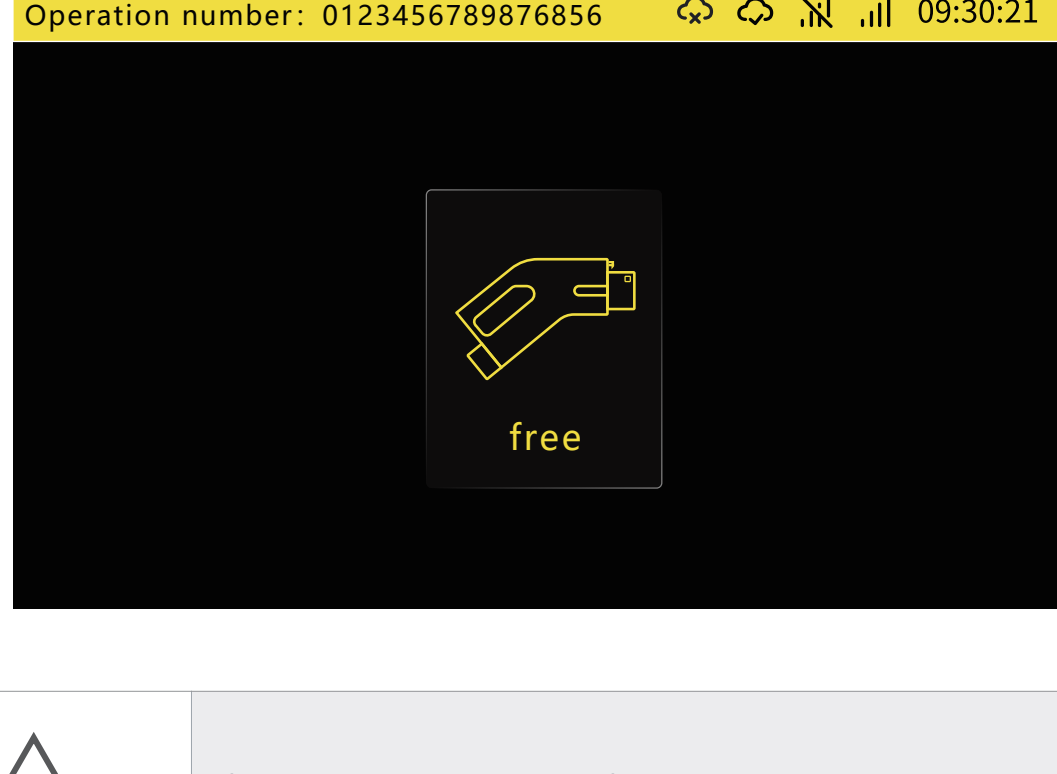
5. Scan the QR code on the display screen with your phone to charge



6. After charging is complete, click "Shut Down" to end the charging process Unplug the charging plug

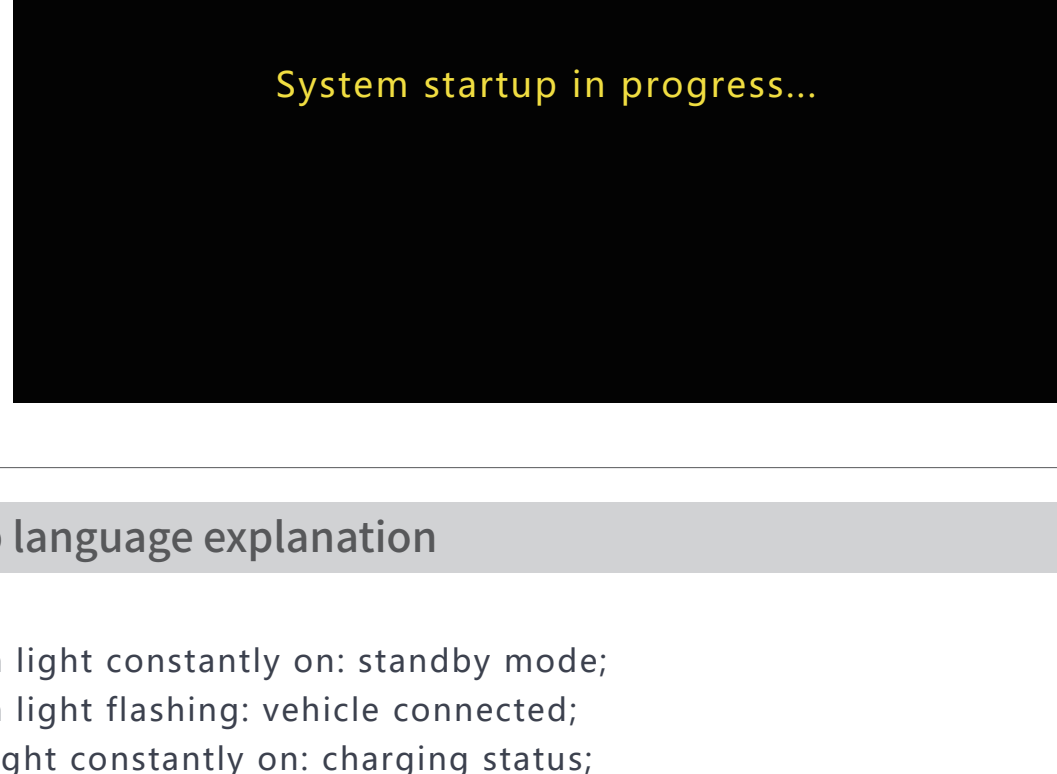
## About scanning code

After completing the power on of the charging station, the charging station starts the power on self-test. After successful startup, the display screen enters the standby interface. In the standby interface, users can Click on 'Charging Prices' to view the charging details of the charging station.



be careful

If the charging station fails to start up, the display screen will remain in the system startup mode Need to contact professional after-sales personnel for handling.

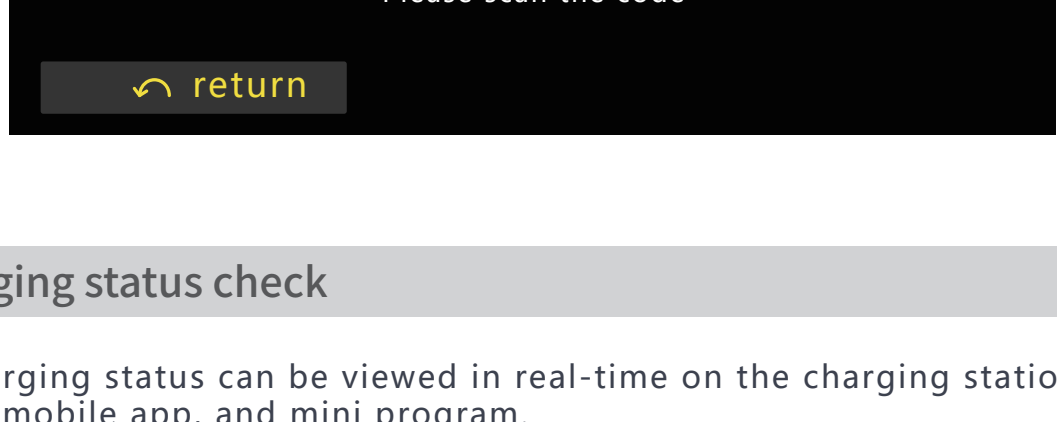


## Lamp language explanation

- Green light constantly on: standby mode;
- Green light flashing: vehicle connected;
- Red light constantly on: charging status;
- Red light flashing: charging started;
- Yellow light constantly on: fault status;
- Yellow light flashing: communication failure.

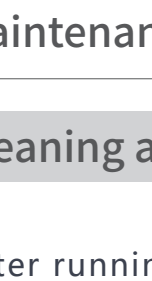
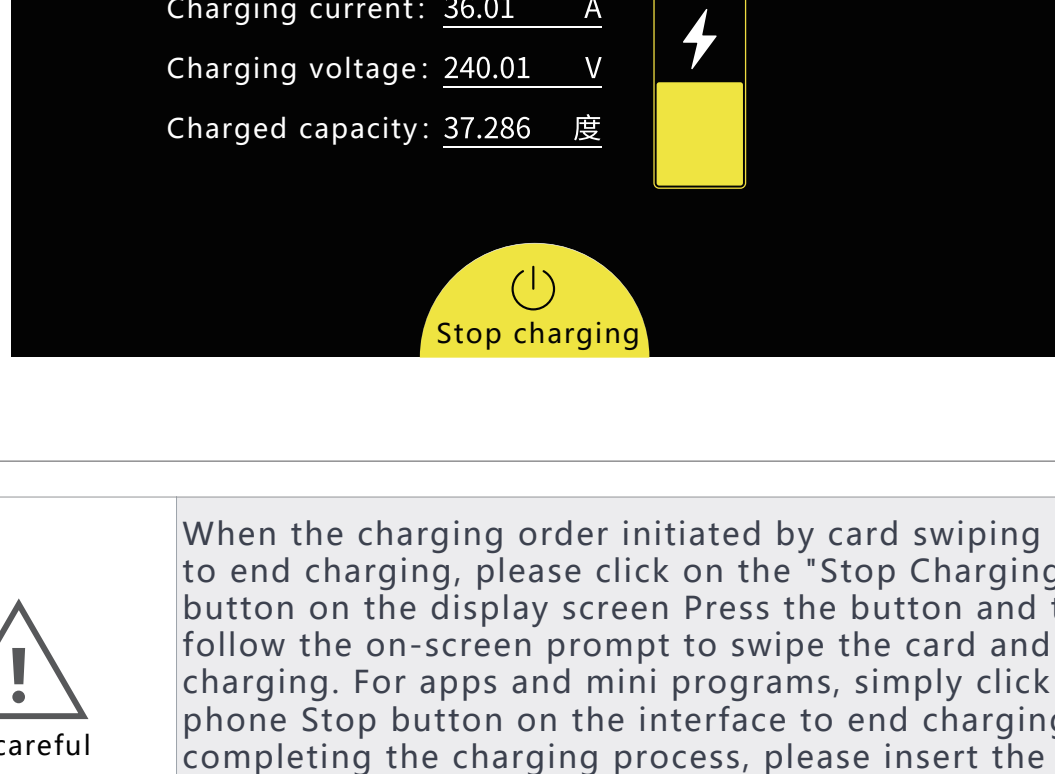
## Start charging

Before charging, please plug in the charging gun and directly use the mobile app or supported mini program to scan the authentication method selection interface QR code, after configuring the charging parameters, you can start charging. You can also click the "Scan Code to Charge" button, and the interface will jump to page two QR code scanning interface, scan the QR code with a mobile app or supported mini program, and after configuring the charging parameters, you can also start it charge.



## Charging status check

The charging status can be viewed in real-time on the charging station display screen, mobile app, and mini program.



be careful

When the charging order initiated by card swiping needs to end charging, please click on the "Stop Charging" button on the display screen Press the button and then follow the on-screen prompt Press the card and then stop charging. For apps and mini programs, simply click on the phone Stop button on the interface to end charging. After completing the charging process, please insert the charging gun back into the charging station. Please do not Discard it on the ground at will.

## Maintenance instructions

### Cleaning and replacement of dust screen

- After running for a certain period of time, the dust net must be cleaned or replaced, and the dust and foreign objects at the air inlet must also be cleaned.



warning

The dust net should be cleaned at least once a quarter and replaced every six months to avoid affecting the charging station Normal heat dissipation.

## Box specifications/weight, quantity, size



Length 63, Width 29, Height 55(cm)  
weight: ≈25kg

## Product packaging

