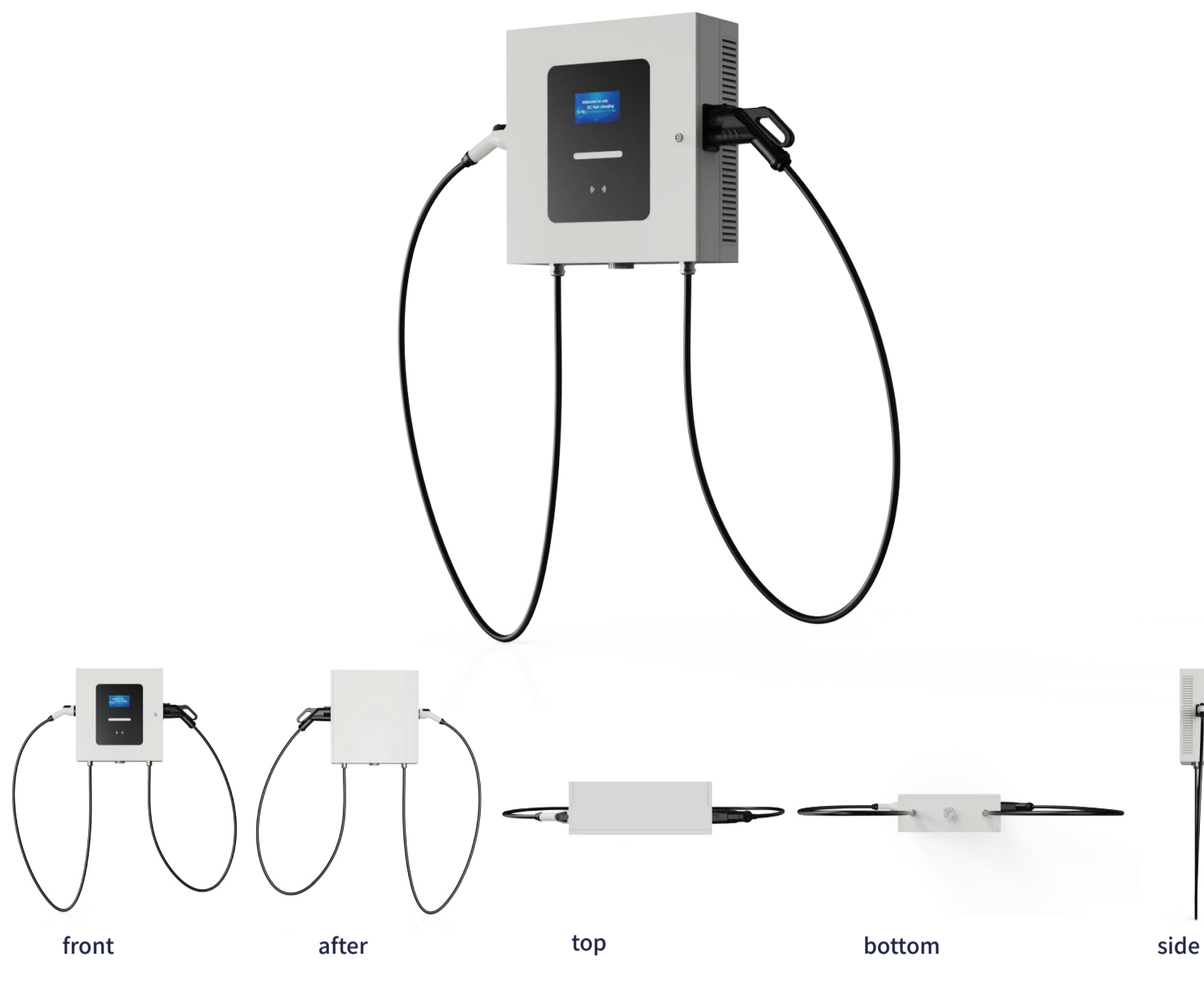
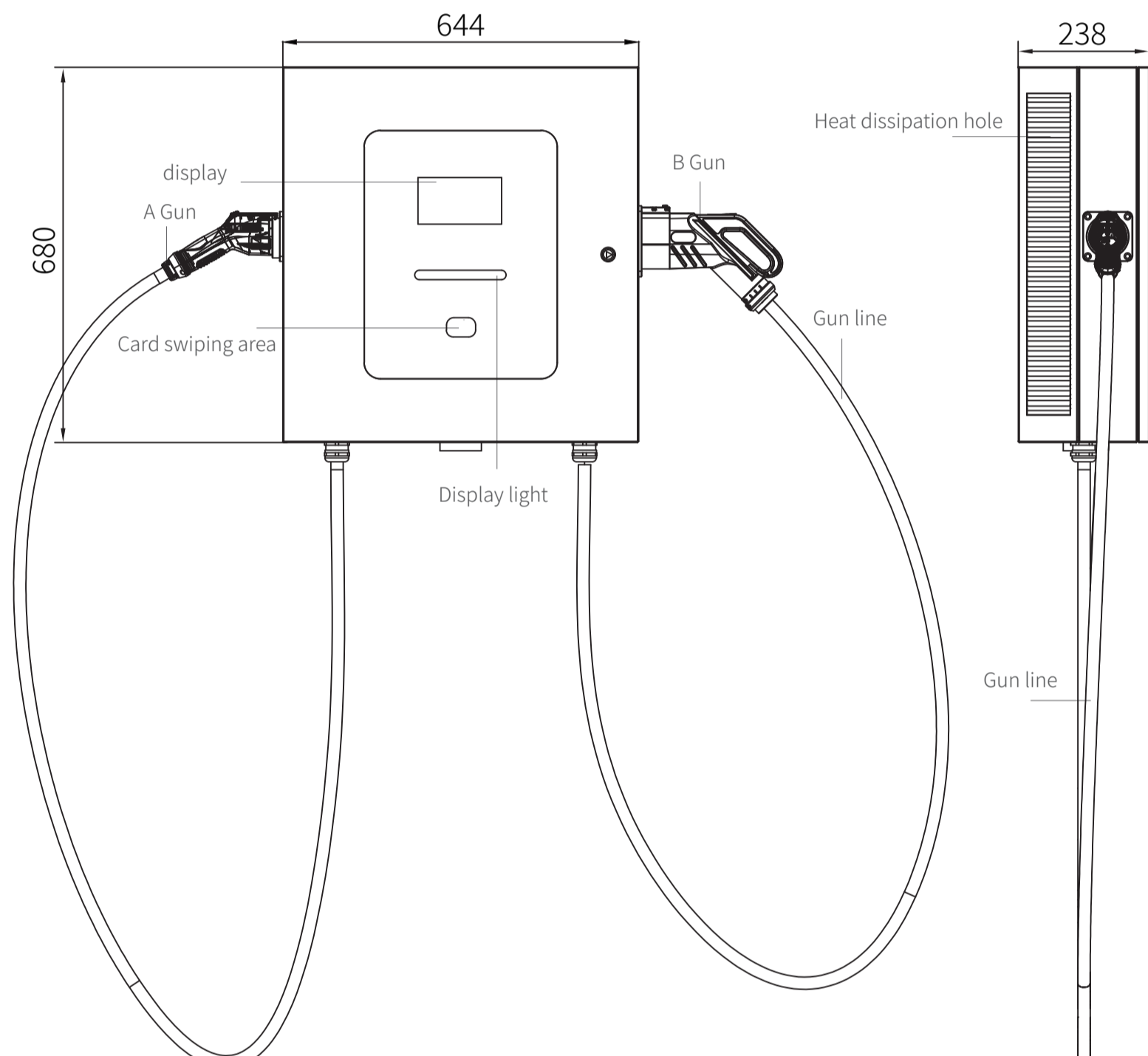


DC small DC40KW wall mounted charging station

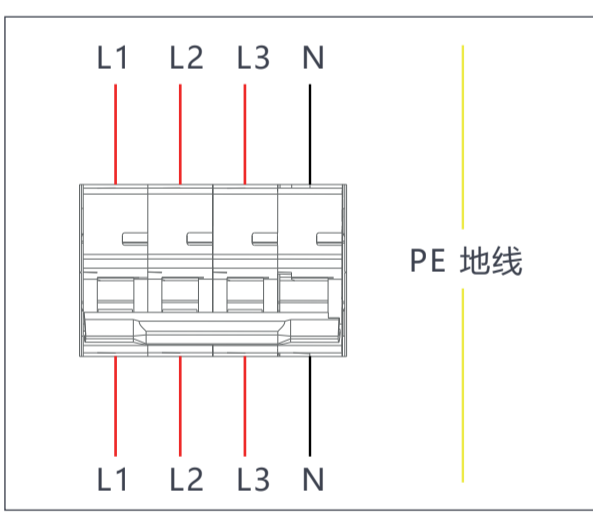


Parameter/specification sheet

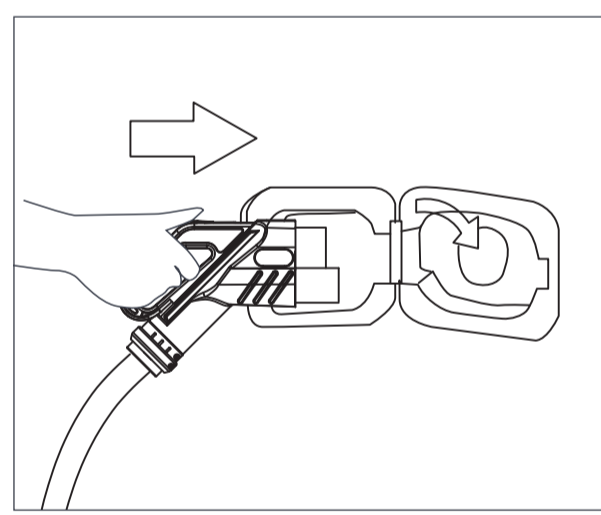
Rated input voltage	380Vac \pm 20%(three-phase)
Rated output power	40kW
Maximum input current	150A(Three phase)
Output constant power range	1~150A
Voltage stabilization accuracy	\leq +0.5%
Output voltage	Within the range of 1-1000V
Charging method	Swipe card charging, scan code charging
Protection function	Overcurrent, Overvoltage, Undervoltage, Leakage Protection
protection grade	IP54
Charging interface	GB/T和CCS2 (dual gun)
Exposed gun line length	Standard configuration of 3 meters (customizable)
work environment	Altitude:< 2000m, temperature:- 20 ° C~65 ° C, derating work above 50 ° C
External dimensions	644*238*680(mm)
Number of charging guns	ONE
human-computer interaction	7-inch screen
operation temperature	-25 ° C to 40 ° C
humidity	5% -95% RH (no condensation)
Design standards	IEC-61851. ISO-15118 (European Standard) GB/T 18487.1 (National Standard)



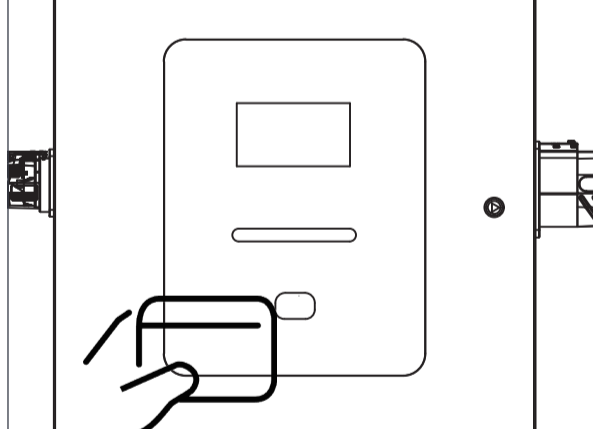
usage method



1. Connect as shown in the diagram, L1 live wire, L2 live wire, L3 live wire, N neutral wire, PE wire



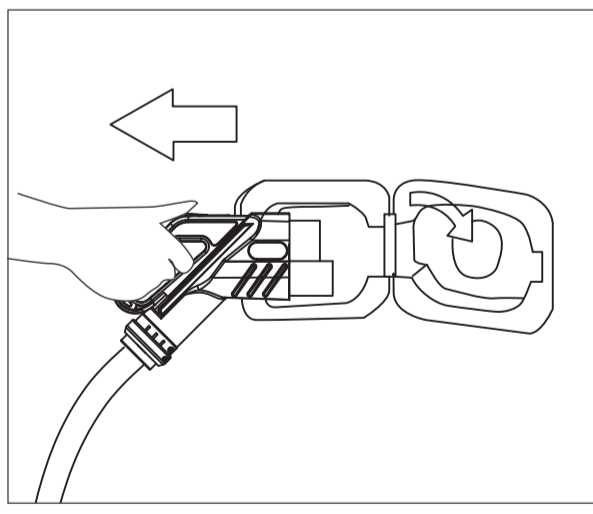
2. Insert the charging gun head into the vehicle body



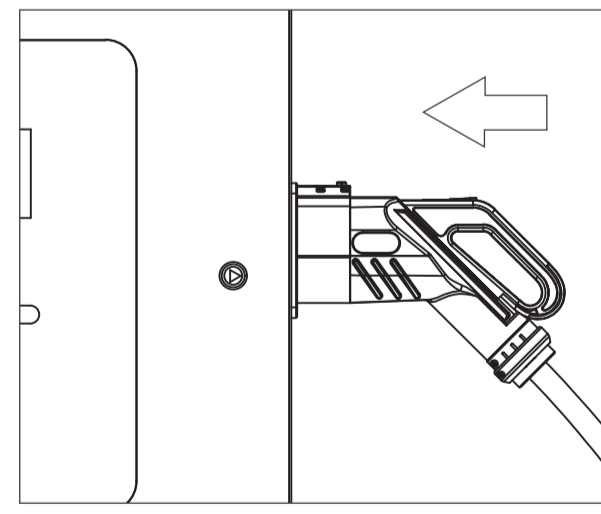
3. Card swiping for charging



4. Or scan the QR code on the display screen with your phone to charge

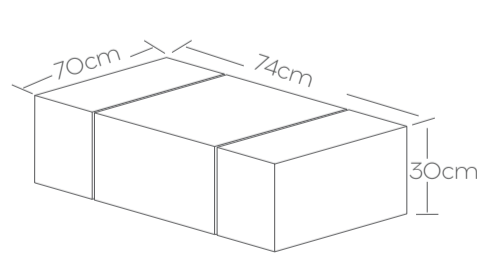


5. After charging is complete, unplug the charging plug



6. Insert the charging gun head back into the charging station

Box specifications/weight, quantity, size



Length 70, Width 30, Height 74(cm)
weight: \approx 28kg

Product packaging

