

ACCURATURE



ACCURATURE

Shanghai Accurature Diagnostics Co., Ltd.

📍 Building 1, No.168 Banqiao East Road, Shanyang Town, Jinshan District, Shanghai 201508, P.R. China.

☎ Phone Number: +86 21 64338133

✉ Email Address: service@accurature.com

🌐 Website: <http://www.accurature.com>

Δcrapid™

Fluorescent Immunoassay System



The Acrapid™ Fluorescent Immunoassay platform includes 60+ kinds of reagents and three high-performance quantitative devices, focusing on detecting Cardiovascular disease, Inflammation, Gastropathy, Sex hormones and others. In addition to the above regular testing panels, we have creatively and proudly developed cutting edge testing panels which like Alzheimer's and Brain Injury markers on this incomparable platform. With this technological innovation, the Healthcare Professionals (HCPs) are able to provide rapid insights to aid in patient management when it matters most and making healthcare more accessible.



Fluorescent Immunoassay Analyzer FIA-100

The Acrapid™ FIA-100 is intended for use by Healthcare Professionals (HCPs) to improve the way to diagnosing and monitoring various conditions, including Cardiovascular disease, Diabetes, Inflammation, Gastropathy, Sex hormones etc. It's small and compact designed, to aid in patient diagnosis at the Point of Care.

Technical Advantages



Portable

Small and compact design.
On-site testing & near to patient,
improve patient experience



Easy-to-use

Maintenance free with easy to
perform operation. Testing can
be offered 24 x 7 and Cost Effective



Instant Results

Rapid results in < 15 minutes,
engagement with immediate test
results and feedback



Accurate

Good correlation with CLIA method
Quantitative analyzer, with Lab quality
results at point of care



Reagent applicability

Room temperature storage for
reagent cartridge
Suitable for whole blood, serum,
plasma and urine sample

Application



Laboratory



ER



Ambulance



Clinics

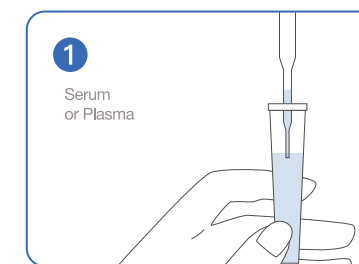


ICU

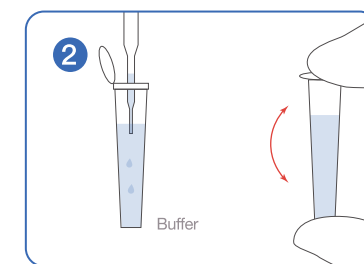


Clinical
department

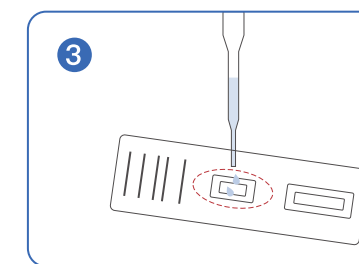
Operation Procedure



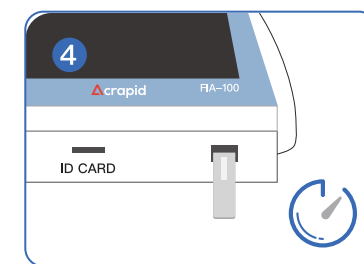
Sampling



Mixing



Dropping



Reading

Facts

Size: 215mm*302mm*155mm, weight: 3kg

Multiple testing modes available. Walk away/Normal mode, Read now mode
and large number testing mode

LCD color touch screen and built-in Thermal Printer

Linux Operating System

USB, Ethernet, RS232 Interface

EHR connected (LIS or HIS compatible)

English language and other language expandable

Unlimited Data storage capacity

24V, 2.5A power input



Acrapid™ Multi-Channel Fluorescent Immunoassay Analyzer FIA-200

The Acrapid™ FIA-200 is a semi-automatic quantitative analyzing system with internal temperature incubation function. It is able to test 12 items at the same time and the brand-new intuitive software brings unparalleled user experience to help diagnose conditions.

Technical Advantages

Multi-Channel analyzer

12 channels, detect more items at the same time

Accurate

Good correlation with CLIA method
Quantitative analyzer, with Lab quality results at point of care

Internal temperature incubation function

Automatic internal incubation function. Provide better reaction condition, bringing better testing accuracy

Fast

Multiple testing modes available, apply to the medium-scale workflow

Easy-to-use

Brand-new intuitive software brings unparalleled user experience, 24 x 7 on standby
Cartridges will be automatically ejected into the tray when test is finished

Reagent applicability

Room temperature storage for reagent cartridge
Suitable for whole blood, serum, plasma and urine sample

Application



Laboratory



ER



Clinics

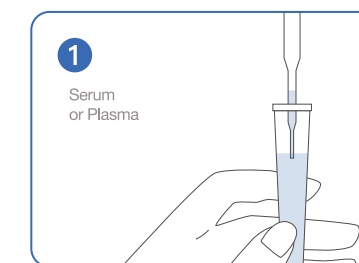


ICU

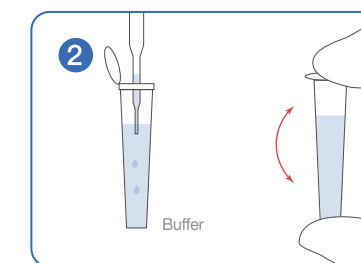


Clinical department

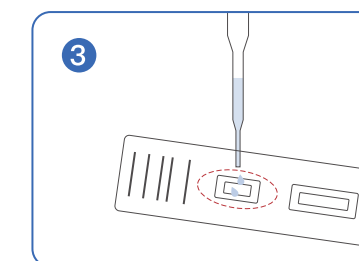
Operation Procedure



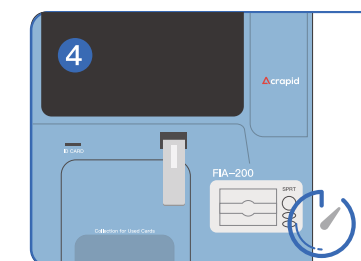
Sampling



Mixing



Dropping



Reading

Facts

Size: 336mm*415mm*415mm, weight: 20kg

Multiple testing modes available. Walk away/Normal mode, Read now mode and large number testing mode

Large LCD color touch screen and Built-in Thermal Printer

12 testing channels with incubation function

Linux Operating System

USB, Ethernet, RS232 Interface

EHR connected (LIS or HIS compatible)

English language and other language expandable

Unlimited Data storage capacity

AC220V/50Hz power input



Fully-Automatic Fluorescent Immunoassay Analyzer FIA-300

Acrapid™ FIA-300 is a quantitative fluorescence immunoassay analyzing system with automatic sample loading without decapping. With sample rack of 4 sample positions and 10 incubation channels, it can perform 50 tests/hour. The fully-automatic system providing a marvelous operating experience to the Healthcare Professionals.

Technical Advantages



Convenient and Easy-to-use

Fully Automatic analyzer, samples in and results out
Intuitive Android software brings unparalleled user experience

Safety

Automatically loading sample from the blood tube rack without decapping, no manual operation requirement, reduce human intervention

Reagent applicability

Room temperature storage for reagent cartridge
Suitable for whole blood, serum, plasma and urine sample

Internal temperature incubation function

Automatic internal incubation function. Provide better reaction condition, bringing better testing accuracy



Application



Laboratory



Medical Center



Clinics



Clinical department

Operation Procedure



Sampling



Loading



Testing



Reading

Facts

Size: 380*380*400mm, weight: 35kg

50 test/hour fully-automatic testing

Apply to 2ml/5ml Vacuum blood collection tube, 0.5ml Capillary blood collection tube and 0.5ml/1.5ml Micro blood collection tube

Multiple testing modes available. Walk away/Normal mode, Read now mode and large number testing mode

10 testing channels with incubation function, 4 sample positions in a rack

Large LCD color touch screen and Built-in Thermal Printer

Android Operating System

USB, Ethernet, RS232 Interface

EHR connected (LIS or HIS compatible)

English language and other language expandable

Unlimited Data storage capacity

AC220V/50Hz power input

Category	Test Item	Abbr	Specimen Type	Measuring Range	Qualification
Cardiac Markers	N-terminal brain-type natriuretic peptide preproBNP (NT-proBNP) test kit	NT-proBNP	P/WB	100-20000pg/mL	CE/NMPA
	Troponin I (cTnI) Test Kit	cTnI	S/P/WB	0.1~32ng/mL	CE/NMPA
	Myoglobin (MYO) Test Kit	Myo	S/P/WB	20~600ng/ml	CE/NMPA
	Creatine kinase isoenzyme(CK-MB) Test Kit	CK-MB	S/P/WB	1.0~80ng/ml	CE/NMPA
	Heart Fatty Acid Binding Protein (H-FABP) Test Kit (H-FABP) Test Kit	H-FABP	S/P/WB	2.0~120ng/mL	CE/NMPA
	Troponin I, Creatine Kinase Isozyme, Myoglobin (cTnI, CK-MB, MYO)Combination Test Kit	3 in 1 (cTn I/Myo/CK-MB)	S/P/WB	0.1~32ng/mL/20~600ng/ml/1.0~80ng/ml	CE
	B-type natriuretic peptide (BNP) test kit	BNP	P/WB	0-25ng/mL	CE
	Troponin I, N-terminal brain-type natriuretic peptide preproBNP (cTnI,NT-proBNP) Combination Test Kit	2 in 1 (cTnI/ NT-proBNP)	S/P/WB	0.1~32ng/mL/ 100-20000pg/mL	CE
	Full C-reactive protein (hs-CRP) Test Kit	hs-CRP	S/P/WB	0.5~150mg/L	CE
	Lipoprotein-associated phospholipase A2 (LP-PLA2) test kit	LP-PLA2	P/WB	30-800U/L	CE
	Troponin T (cTnT) Test Kit	cTnT	S/P/WB	10.0~2000.0ng/L	CE
	Soluble Growth Stimulated Expressed Gene 2 Protein (ST2) Test Kit	ST2	S/P/WB	2.00~200.00ng/mL	CE
Inflammation Markers	Calcitoninogen (PCT) Test Kit	PCT	S/P/WB	0.15~60ng/mL	CE/NMPA
	Full C-reactive protein(hs-CRP)Test Kit	hs-CRP	S/P/WB	0.5~150mg/L	CE/NMPA
	C-reactive protein, Procalcitonin (CRP,PCT) Combination Test	2 in 1 (CRP+PCT)	S/P/WB	0.5~150mg/L/ 0.15~60ng/mL	CE
	Serum Amyloid A (SAA) Test Kit	SAA	S/P/WB	0.5~100mg/L	CE/NMPA
	Interleukin 6 (IL-6) Test Kit	IL-6	S/P/WB	3~1000pg/mL	CE/NMPA
	Heparin Binding Protein (HBP) Test Kit	HBP	S/P/WB	5.00-300.00ng/mL	CE
Gastropathy Markers	Pepsinogen I (PGI) Test Kit	PGI	S/P/WB	1.00-200.00ng/mL	CE
	Pepsinogen II (PGII) Test Kit	PGII	S/P/WB	1.00-100.00ng/mL	CE
	Gastrin 17 (G17) Test Kit	G17	S/P/WB	0.50-50.00pmol/L	CE
Thrombus Markers	D-Dimer (D-Dimer) Test Kit	D-Dimer	P/WB	0.2~10ug/ml	
Alzheimer's Markers	Alzheimer's neurofilament protein (AD7C-NTP) test kit	AD7C-NTP	S/P/WB	5-100pg/mL	CE
	Human Phosphorylated Tau-181 Protein (pTau-181) Test Kit	pTau-181	S/P/WB	5-100pg/mL	CE
	Human Betta-amyloid 1-42 (AB1-42) Test Kit	AB1-42	S/P/WB	20-640pg/mL	CE
Brain Injury Markers	S100β	S100β	S/P/WB	0.08-10ng/ml	
	Protein Gene Product 9.5 (PGP9.5) Test Kit	PGP9.5	S/P/WB	0.5-16.0umol/L	CE
	Glial Fibrillary Acidic Protein (GFAP) Test Kit	GFAP	S/P/WB	25 - 800ng/L	CE
	Growth Differentiation Factor 15 (GDF15) Test Kit	GDF15	S/P/WB	15-1000pg /ml	CE
Therapeutic Drug Monitoring	Amikacin (AMK) Test Kit	AMK	S/P	1-100mg/L	CE
	Azithromycin (AZM) Test Kit	AZM	S/P	0.4-18.0 μg/ml	CE
	Bedaquiline (Bdq) Test Kit	BDQ	S/P	1.0-5ug/ml	CE
	Ethambutol(EMB) Test Kit	EMB	S/P	1~14.5μg/ml	CE
	Kanamycin (KANA) Test Kit	KANA	S/P	0.2-16.2 ppb	CE
	Levofloxacin (LVFX) Test Kit	LVFX	S/P	1-32mg/L	CE
	Linezolid(LZD) Test Kit	LZD	S/P	1-32mg/L	CE
	Moxifloxacin (MXF) Test Kit	MXF	S/P	1-32mg/L	CE
	Pyrazinamide (PZA) Test Kit	PZA	S/P	25-5000ng/mL	CE
	Rifampicin(RFP) Test Kit	RFP	S/P	1-32mg/L	CE
	Rifapentine(RFT) Test Kit	RET	S/P	2.00~38.98μg/ml	CE
	Carbamazepine (CBZ) Test Kit	CBZ	S/P	1-32μg/mL	CE
	Lamotrigine (LTG) Test Kit	LTG	S/P	1-32μg/mL	CE
	Phenobarbital (PBB) Test Kit	PBB	S/P		CE
	Phenytoin (PHT) Test Kit	PHT	S/P	1-32μg/mL	CE
	Valproic acid (VPA) Test Kit	VPA	S/P	10-160μg/mL	CE
	Olanzapine (OZP) Test Kit	OZP	S/P	100-2000ng/mL	CE
	Quetiapine (QTP) Test Kit	QTP	S/P	10-200ng/mL	CE
	Risperidone (RSP) Test Kit	RSP	S/P	60-1600ng/mL	CE
	Clozapine (CZP) Test Kit	CZP	S/P	10-160ng/mL	CE
	Escitalopram (ESP) Test Kit	ESP	S/P	40-1600ng/mL	CE
	Fluoxetine (FLX) Test Kit	FLX	S/P	10-200ng/mL	CE
	Sertraline (SERT) Test Kit	SERT	S/P	5-500ng/mL	CE

Category	Test Item	Abbr	Specimen Type	Measuring Range	Qualification
Thyroid Function	TSH	TSH	S/P/WB	0.1-60μIU/mL	
	T3	T3	S/P/WB	0.5-6.5ng/ml	
	T4	T4	S/P/WB	3.7-300ng/mL	
	fT3	fT3	S/P/WB	1.5-30pg/mL	
	fT4	fT4	S/P/WB	2-100pg/mL	
Sex Hormone Markers	β-HCG	β-HCG	S/P/WB	5-20000mIU/mL	
	LH	LH	S/P/WB	5-100mIU/mL	
	FSH	FSH	S/P/WB	1.0-200 mIU/mL	
	Prog	Prog	S/P/WB	0.37-40ng/mL	
	PRL	PRL	S/P/WB	0.3~200ng/mL	
	E2	E2	S/P/WB	2 - 64 pmol/L	
	Testosterone	Testosterone	S/P/WB	0.10-15.0ng/mL	
Bone Metabolism	AMH	AMH	S/P/WB	0.1-23ng/mL	
	Vitamin D	Vitamin D	S/P	5-60ng/ml	
Kideny Function Markers	One Step MAU	One Step MAU	Urine	5-200mg/L	
	CysC	CysC	S/P/WB	0.2-8mg/L	
	NGAL	NGAL	Urine	25-2000ng/ml	
Tumor Markers	β2-MG	β2-MG	S/P/WB	0.2-20ug/mL	
	AFP	AFP	S/P/WB	8.0-1000.0ng/mL	
	PSA	PSA	S/P/WB	2.0-128.0ng/mL	
	CEA	CEA	S/P/WB	0.4-1500.0ng/mL	
	fPSA	fPSA	S/P/WB	75.0- 2400.0pg/mL	
Infections Disease	iFOB	iFOB	Feces		
	Dengue NS1 Ag	Dengue NS1 Ag	S/P/WB		
Allergy	H.pylori Ag	H.pylori Ag	Feces		
	Total IgE	Total IgE	S/P/WB	5.0-1000.0IU/mL	
Hypertension	Cortisol	Cortisol	S/P/WB	2.0-500.0 RU/mL	
Anemia Markers	Ferritin	Ferritin	S/P/WB	1.0-2000.0ng/mL	
Rheumatoid Arthritis	ASO	ASO	S/P/WB	0~680 IU/mL	
	RF	RF	S/P/WB	10.0~160.0 IU/mL	
	Anti-CCP	Anti-CCP	S/P/WB	10.0~140.0 RU/mL	
Diabetes	HbA1c	HbA1c	WB	4%-15%	