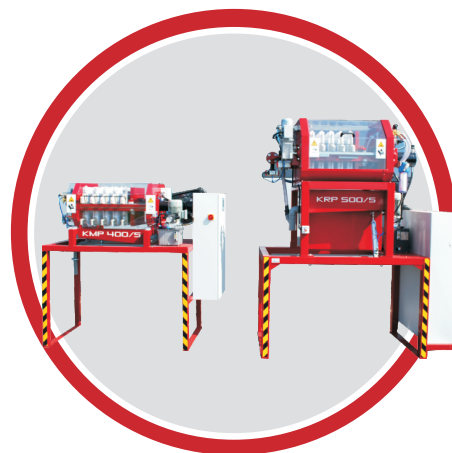


High-efficiency Automatic Filter Press

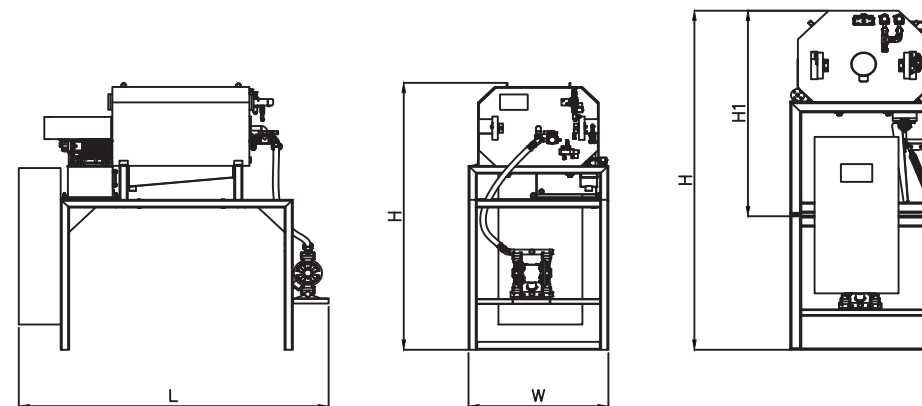
The KMP/KRP filter press system incorporates advanced rapid solid-liquid separation technology introduced from Germany. The equipment features a uniquely designed quick-opening enclosed structure, integrating a series of automated functions including press filtration, filter plate vibration, valve opening/closing, material pump start/stop, material detection, and fault alarm.

Customized solutions such as automatic liquid collection drip trays, electric vibratory plates for cake discharge assistance, and high-pressure spray cleaning for filter plates/cloths are available to meet specific customer requirements and operational conditions.

PWI is committed to providing users with a new generation of sludge dewatering equipment that delivers higher efficiency, cleaner operation, enhanced safety, and smarter performance.



Models of KMP/KRP

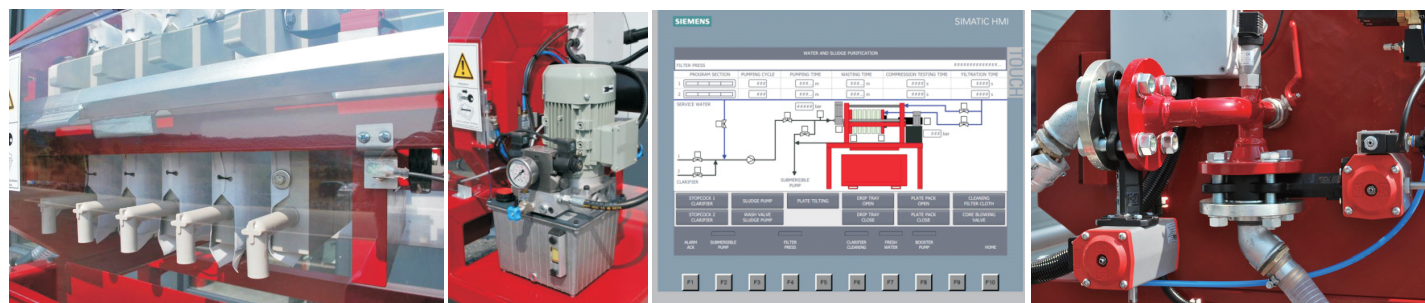


Models

Model	Area	Volum	Moisture content (%)		DS (kg/s)		Dimension(mm)			Power	Pump
	m ²	L	inorganic	organic	inorganic	organic	L	W	H1/H	KW	Pump
KMP 400/5	1.2	19	< 55	< 75	922.1	136.6	2300	900	2000	0.75	25
KMP 500/5	1.8	29	< 55	< 75	1409.5	208.8	2300	1000	2000	0.75	25
KRP 500/5	1.8	29	< 55	< 75	1409.5	208.8	2600	1100	1600/2600	2.2+0.25	25
KMP 500/8	3.2	50.8	< 55	< 75	2466.6	365.4	2600	1000	2000	2.2	40
KRP 500/8	3.2	50.8	< 55	< 75	2466.6	365.4	3000	1100	1600/2600	2.2+0.25	40
KMP 630/8	5.0	80.4	< 55	< 75	3906.1	578.7	2700	1200	2200	2.2	40
KRP 630/8	5.0	80.4	< 55	< 75	3906.1	578.7	3000	1200	1800/3000	2.2+0.25	40
KMP 630/12	7.9	126.3	< 55	< 75	6138.1	909.3	3500	1200	2300	2.2	40
KRP 630/12	7.9	126.3	< 55	< 75	6138.1	909.3	3600	1200	1800/3000	2.2+0.25	40
KMP 800/15	16.5	264.2	< 55	< 75	12842.1	1902.5	4200	1350	2400	2.2+0.25	50
KRP 800/15	16.5	264.2	< 55	< 75	12842.1	1902.5	4650	1560	2400	2.2+0.25	50
KRP 800/20	22.4	358.6	< 55	< 75	17428.6	2582.0	5400	1560	2400	5.5+0.25	50
KRP 800/25	28.3	453.0	< 55	< 75	22015.1	3261.5	6700	1700	2400	5.5+0.25	50
KRP 800/30	34.2	547.4	< 55	< 75	26601.5	3941.0	7900	1700	2400	7.5+0.25*2	50

PWI reserves the right to modify some parameters without effecting equipment performance

Core Components



Advantages



Compact structure with small land occupation

Higher filtration speed and save 75% area, for inorganic sludge 15mins per batch, organic sludge 40mins per batch



Fully automated

PLC control fulfill 24-hour unattended continuous operation with auxiliary vibration and cleaning



Clean and safe

Sealed design with zero leak and splash, optimize working environment



Low maintenance cost

Lower operation consumption and component loss, longer lifespan