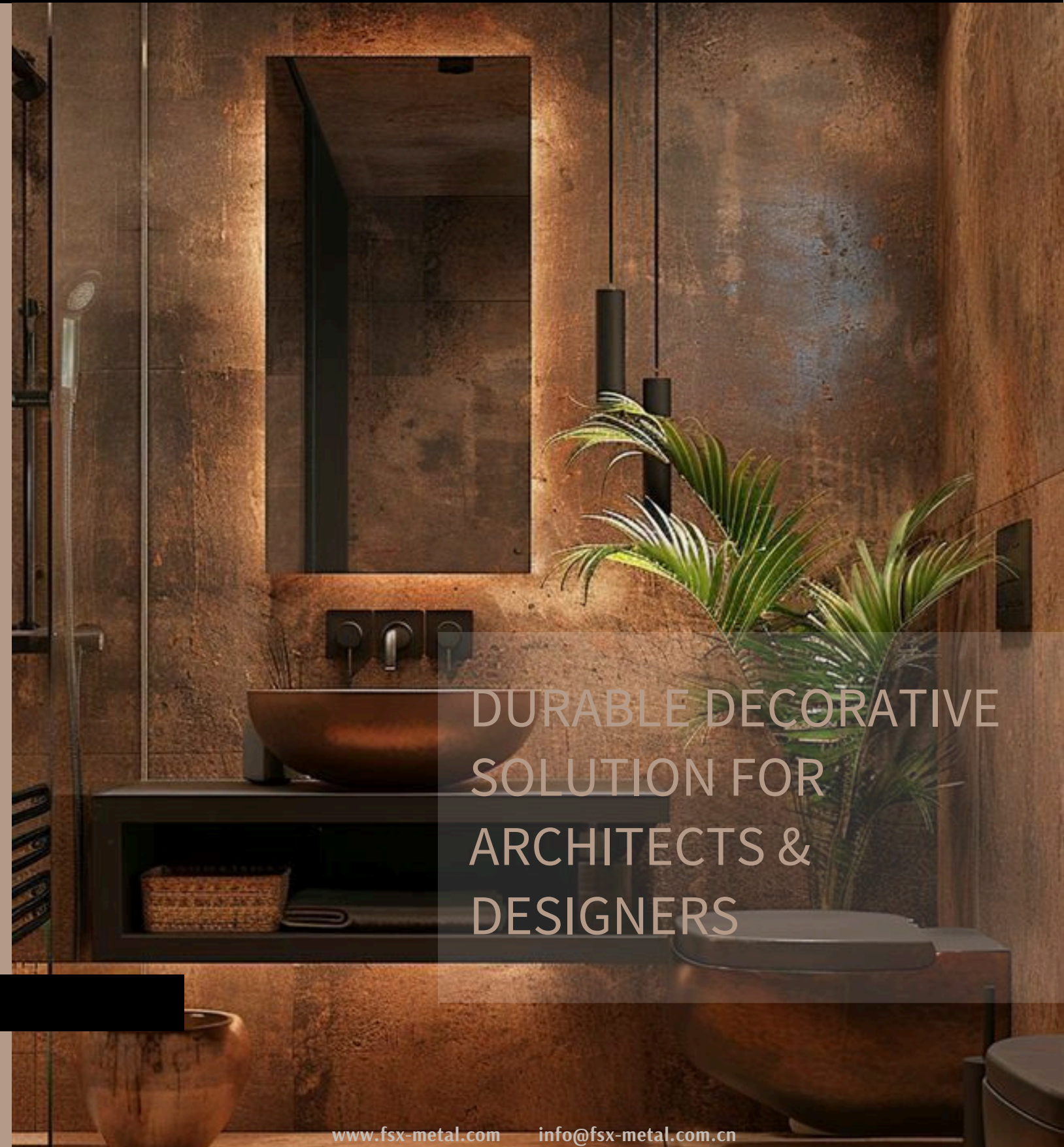


# ANTIQUE STAINLESS STEEL



## X-METAL MATERIALS CO., LTD

(+86) 189 231 25835 | [info@fsx-metal.com.cn](mailto:info@fsx-metal.com.cn) | [www.fsx-metal.com](http://www.fsx-metal.com)  
Room 2511, 25th floor, Bld shibo finance cente, NO.38 South  
Fenjiang Road, Shiwan, Chancheng district,  
Foshan, Guangdong  
Province,China



DURABLE DECORATIVE  
SOLUTION FOR  
ARCHITECTS &  
DESIGNERS

# APPLICATIONS

# Antique Stainless Steel

---

## Elevator Interiors

Make every floor feel luxurious -  
hides scuffs from daily use

---

## Kitchen Backsplashes

Turn cooking areas into  
showpieces - wipes clean instantly

---

## Building Facades

Upgrade exteriors with weather-  
proof elegance - lasts decades

---

## Signage & Logos

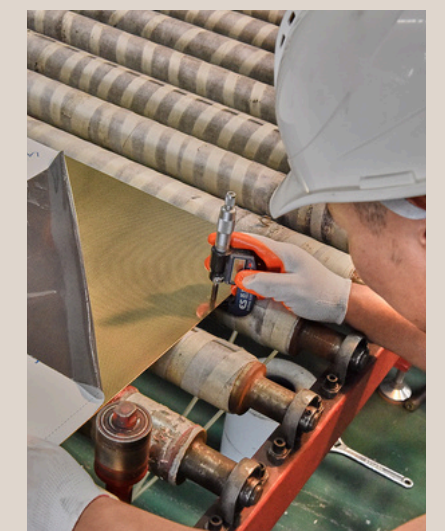
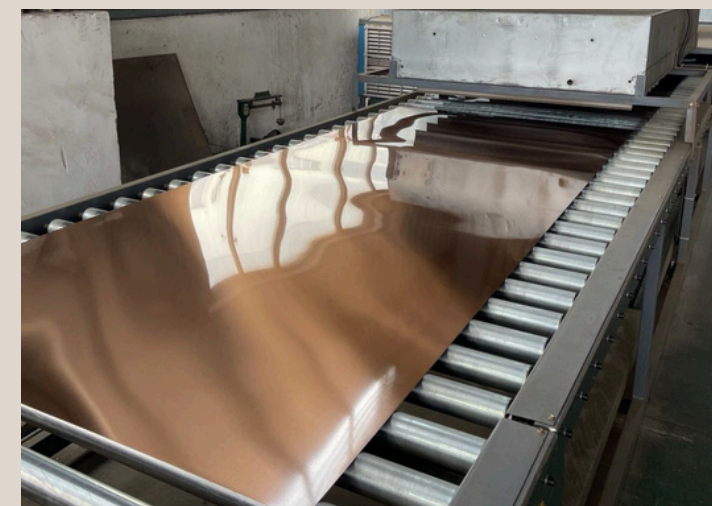
Create memorable brand signs -  
looks expensive without the cost

# Antique Stainless Steel

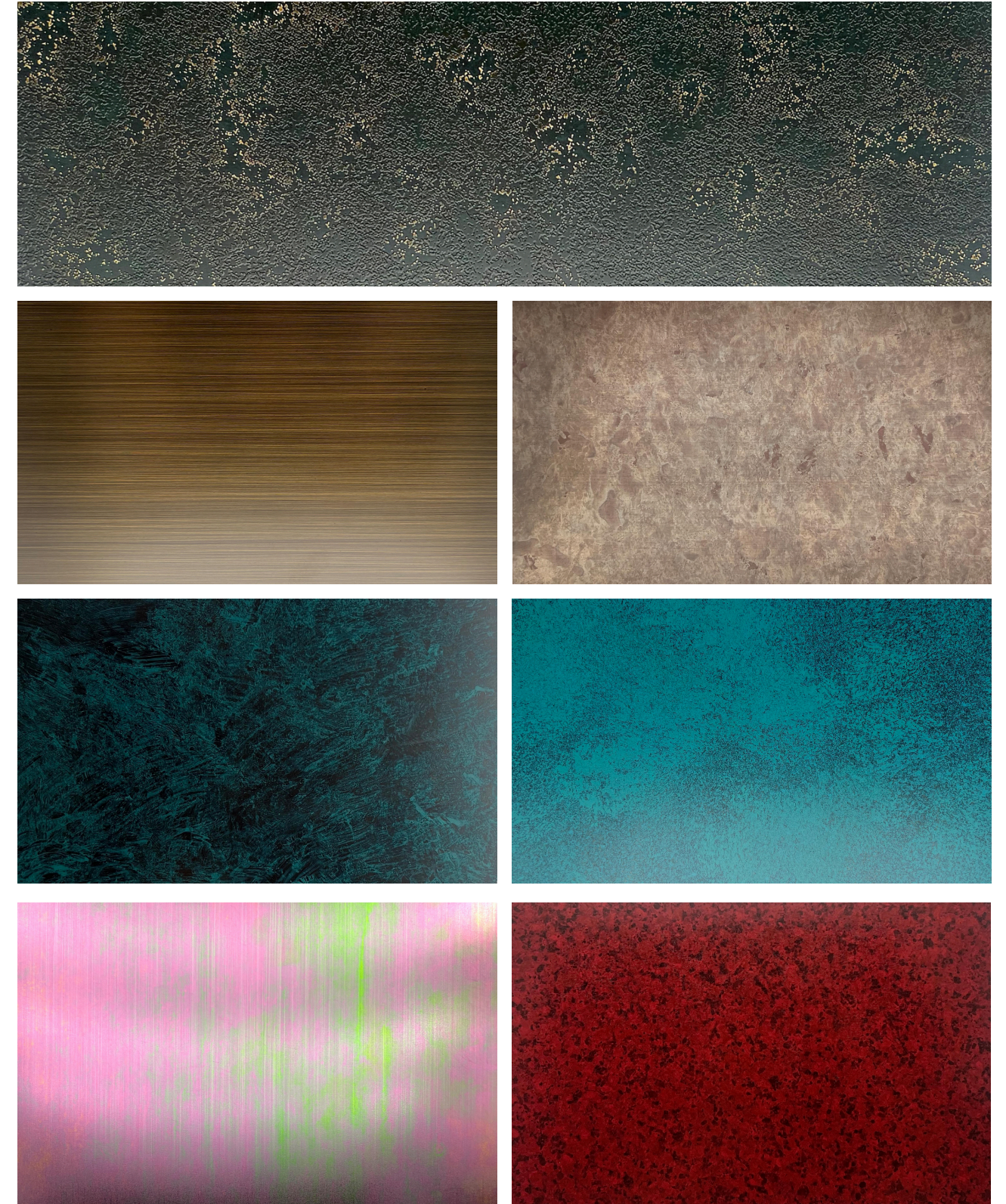
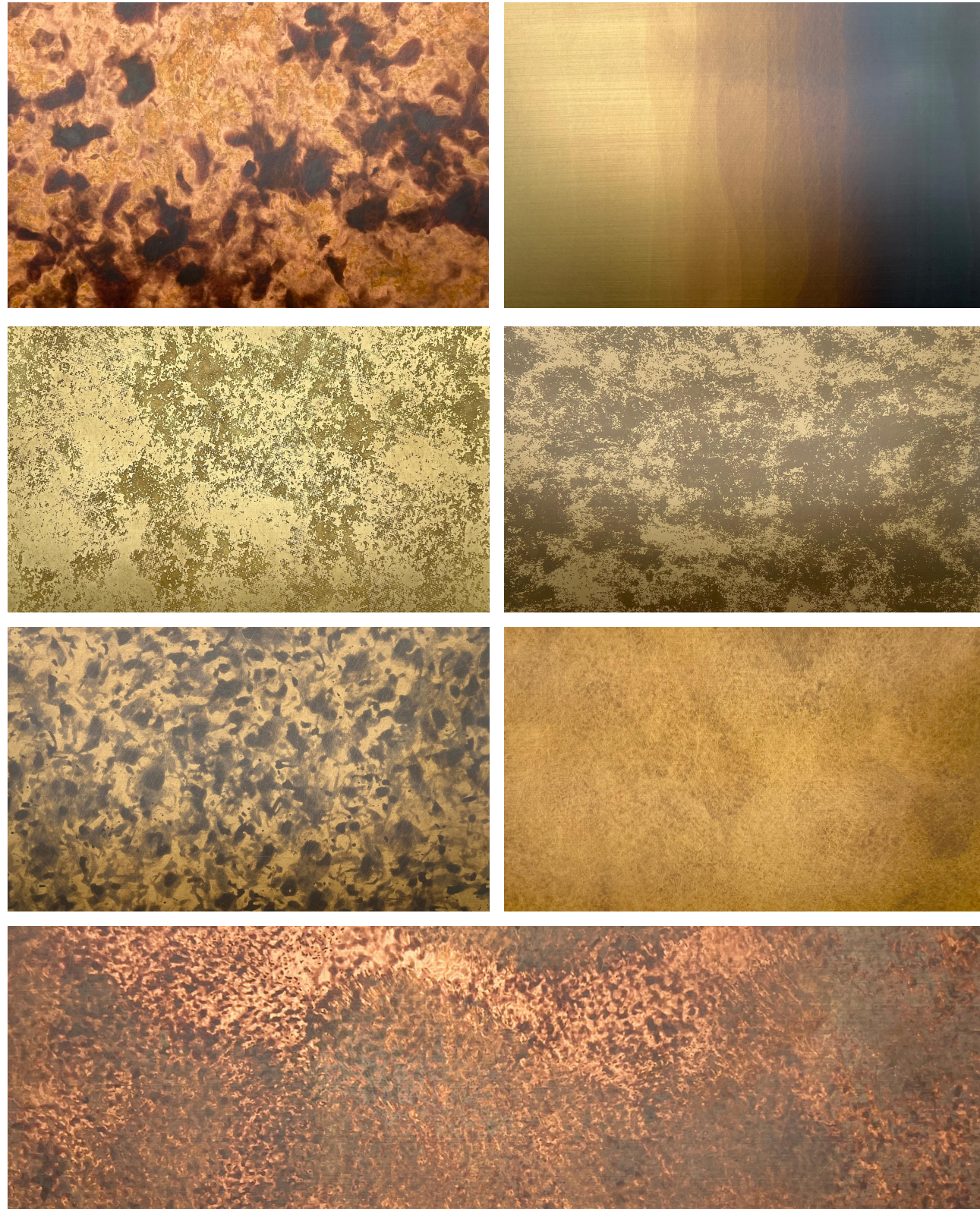
## Antique Stainless Steel

Antique stainless steel uses: Elevator interiors, kitchen backsplashes, building facades, furniture accents. Durable decorative solution for architects and designers.

Special brushed steel with vintage color tones - real metal, not a coating



# Product overview



# Key Advantages

Antique stainless steel uses:  
Elevator interiors, kitchen  
backsplashes, building  
facades, furniture accents.

\*Timeless Elegance  
Vintage look that never goes out of style

\*Versatile Applications  
Suitable for both interior and exterior use in  
architectural, decorative, and functional  
applications.

\*Superior Durability  
Our antique finish stainless steel maintains the  
corrosion resistance and strength of premium  
stainless steel, ensuring long-lasting  
performance in various environments.