

A large yellow circle with a thin orange border. Inside the circle, the letters 'BSCI' are written in a bold, black, sans-serif font.

BSCI

Company Profile

SoundPer delivers advanced Bluetooth products and has focused on class-leading innovations ever since. From day one, SoundPer has been creating the world's leading communication device and Bluetooth products.

SoundPer have a large number of spot, fast delivery, price advantage! Support domestic and foreign customers to send a piece, to undertake OEM/ODM orders. Welcome customers to discuss cooperation!



Xia Men SoundPer Electronic Technology Co., Ltd.

Product Catalogue



Contacts: Miss. Ji

Tel: +8618650158583

WeChat: 18650158583

Email: soundper@outlook.com





Category selection

**Bluetooth
communication
Series**

**TWS
Series**

**ANC
Series**

**FM
Series**

Painted Series

**Retro
Series**

**PF
Series**

**VJ
Series**

**PN
Series**

**PM
Series**

**SN
Series**

**Customiz-
ed series**



1. 1 rider: Model: S30S, S10SP, S5S
2. 2 riders: Model: S9S-V2, S10S-V3
3. 4 riders: Model: S12SPLUS
4. 8 riders: Model: M10SPLUS
5. 10 riders: Model: S10S PRO, S9SPRO, S12SPRO, M10S
6. MESH 32 riders+Bluetooth intercom 2 riders: Model: S60R, S12PRO

Bluetooth Communication Series

Product introduction



S30S (1rider)

1. Bluetooth version: V5.4
2. Siri and Voice control systems
3. Battery: 800mAh
4. Talk/Standby time: 35h/ 200h
5. Noise cancelling system
6. Sound quality : Speed at 120km/h with clear sound
7. Double MIC
8. Speaker: 40mm
9. USB Charge: Type-C
10. Waterproof design
11. Product size: 85*38*22mm
12. Color box size: 16*11*5.5cm
Carton size: 44*42*32cm,
40 pcs / carton
N.W: 8.88kg / carton
G.W: 9.25kg/carton

HOT!!!



S10SP(1 rider)

1. Bluetooth version: V5.4
2. Siri and Voice control systems
3. Battery: 650mAh
4. Talk/Standby time: 35h/ 200h
5. Noise cancelling system
6. Sound quality : Speed at 120km/h with clear sound
7. Double MIC
8. Speaker: 40mm
9. USB Charge: Type-C
10. Waterproof design
11. Product size: 86*38*16mm
12. Color box size: 16.5*11.5*16cm
Carton size: 44*42*32cm,
40 pcs / carton
N.W: 8.88kg / carton
G.W: 9.25kg/carton

HOT!!!



S5S(1 rider)

1. Bluetooth version: V5.4
2. Siri and Voice control systems
3. Battery: 400mAh
4. Talk/Standby time: 12h/ 200h
5. Noise cancelling system
6. Music sharing
7. Sound quality : Speed at 120km/h with clear sound
8. Double MIC
9. Speaker: 40mm
10. USB Charge: Type-C
11. Waterproof design
12. Product size: 80*26*10mm
13. customized size and packing

HOT!!!



S9S-V2(2riders)

1. Bluetooth version: V5.4
2. Bluetooth intercom Distance: 2 riders/1200m
3. Automatic answering of incoming calls
4. Talk/Standby time: 15h/ 350h
5. Siri and Voice control systems
6. Battery: 800mAh
7. Noise cancelling system
8. Music sharing
9. Sound quality : Speed at 120km/h with clear intercom
10. Double MIC
11. Speaker: 40mm
12. USB Charge: Type-C
13. Waterproof design
14. Product size: 89*46*20mm
15. Color box size: 16.5*11.5*16cm
Carton size: 44*42*32cm,
40 pcs / carton
N.W: 11.28kg / carton
G.W: 11.65kg/carton

HOT!!!



S10S-V3(2riders)

1. Bluetooth version: V5.4
2. Bluetooth intercom Distance: 2 riders/1200m
3. Automatic answering of incoming calls
4. Talk/Standby time: 12h/ 300h
5. Siri and Voice control systems
6. Battery: 650mAh
7. Noise cancelling system
8. Music sharing
9. Sound quality : Speed at 120km/h with clear intercom
10. Double MIC
11. Speaker: 40mm
12. USB Charge: Type-C/Micro USB
13. Waterproof design
14. Product size: 84*42*20mm
15. Color box size: 16.5*11.5*16cm
Carton size: 44*42*32cm,
40 pcs / carton
N.W: 11.28kg / carton
G.W: 11.65kg/carton

HOT!!!



S12SPLUS(4riders)

1. Bluetooth version: V5.4
2. Bluetooth intercom Distance: 2 riders /500 m , 4riders/1600m
3. Automatic answering of incoming calls
4. Talk/Standby time: 15h/ 350h
5. Siri and Voice control systems
6. Battery: 800mAh
7. Noise cancelling system
8. Music sharing
9. FM Radio
10. Sound quality : Speed at 120km/h with clear intercom
11. Double MIC
12. Speaker:40mm
13. USB Charge: Type-C
14. Waterproof design
15. Product size: 89*46*20mm
16. Color box size:16.5*11.5*16cm
Carton size: 44*42*32cm,
40 pcs / carton
N.W: 11.28kg / carton
G.W: 11.65kg/carton

HOT!!!



M10S PLUS(8riders)

1. Bluetooth version: V5.4
2. Bluetooth intercom Distance: 2 riders /500 m , 8riders/2000m
3. Automatic answering of incoming calls
4. Talk/Standby time: 15h/ 350h
5. Siri and Voice control systems
6. Battery: 1000mAh
7. Noise cancelling system
8. Music sharing
9. FM Radio
10. Sound quality : Speed at 120km/h with clear intercom
11. Double MIC
12. Speaker:40mm
13. USB Charge: Type-C
14. Waterproof design
15. Product size: 89*46*20mm
16. Color box size:16.5*11.5*16cm
Carton size: 44*42*32cm,
40 pcs / carton
N.W: 11.28kg / carton
G.W: 11.65kg/carton

HOT!!!



S10S PRO(10riders)

1. Bluetooth version: V5.4
2. Bluetooth intercom Distance: 2 riders /500 m , 10riders/2000m
3. Automatic answering of incoming calls
4. Talk/Standby time: 12h/ 300h
5. Siri and Voice control systems
6. Battery: 650mAh
7. Noise cancelling system
8. Music sharing
9. FM Radio
10. Sound quality : Speed at 120km/h with clear intercom
11. Double MIC
12. Speaker:40mm
13. USB Charge: Type-C/Micro USB
14. Waterproof design
15. Product size: 84*42*20mm
16. Color box size:16.5*11.5*16cm
Carton size: 44*42*32cm,
40 pcs / carton
N.W: 11.28kg / carton
G.W: 11.65kg/carton

HOT!!!



S9S PRO(10riders)

1. Bluetooth version: V5.4
2. Bluetooth intercom Distance: 2 riders /500 m , 10riders/2000m
3. Automatic answering of incoming calls
4. Talk/Standby time: 15h/ 350h
5. Siri and Voice control systems
6. Battery: 800mAh
7. Noise cancelling system
8. Music sharing
9. FM Radio
10. Sound quality : Speed at 120km/h with clear intercom
11. Double MIC
12. Speaker:40mm
13. USB Charge: Type-C
14. Waterproof design
15. Product size: 89*46*20mm
16. Color box size:16.5*11.5*16cm
Carton size: 44*42*32cm,
40 pcs / carton
N.W: 11.28kg / carton
G.W: 11.65kg/carton

HOT!!!



S12SPRO (10riders)

1. Bluetooth version: V5.4
2. Bluetooth intercom Distance: 2 riders /500 m , 10riders/2000m
3. Automatic answering of incoming calls
4. Talk/Standby time: 15h/ 350h
5. Siri and Voice control systems
6. Battery: 800mAh
7. Noise cancelling system
8. Music sharing
9. FM Radio
10. Sound quality : Speed at 120km/h with clear intercom
11. Double MIC
12. Speaker: 40mm
13. USB Charge: Type-C
14. Waterproof design
15. Product size: 89*46*20mm
16. Color box size: 16.5*11.5*16cm
Carton size: 44*42*32cm,
40 pcs / carton
N.W: 11.28kg / carton
G.W: 11.65kg/carton

HOT!!!



M10S (10riders)

1. Bluetooth version: V5.4
2. Bluetooth intercom Distance: 2 riders /500 m , 10riders/2000m
3. Automatic answering of incoming calls
4. Talk/Standby time: 15h/ 350h
5. Siri and Voice control systems
6. Battery: 800mAh
7. Noise cancelling system
8. Music sharing
9. FM Radio
10. Sound quality : Speed at 120km/h with clear intercom
11. Double MIC
12. Speaker: 40mm
13. USB Charge: Type-C
14. Waterproof design
15. Product size: 89*46*20mm
16. Color box size: 16.5*11.5*16cm
Carton size: 44*42*32cm,
40 pcs / carton
N.W: 11.28kg / carton
G.W: 11.65kg/carton

HOT!!!



S60R (MESH 32 riders+Bluetooth intercom 2 riders)

1. Bluetooth version: V5.4
2. Bluetooth intercom Distance: 2 riders /500 m
3. MESH intercom Distance: 32 riders /1000 m
4. Automatic answering of incoming calls
5. Talk/Standby time: 15h/ 350h
6. Siri and Voice control systems
7. **Battery: 1100mAh**
8. Noise cancelling system
9. Music sharing
10. FM Radio
11. Sound quality : Speed at 120km/h with clear intercom
12. Double MIC
13. **Speaker:40mm**
14. USB Charge: Type-C
15. Waterproof design
16. Product size: 92*48*27mm
17. Color box size:16.5*11.5*16cm
Carton size: 44*42*32cm,
40 pcs / carton
N.W: 11.28kg / carton
G.W: 11.65kg/carton

HOT!!!



S12PRO (MESH 32 riders+Bluetooth intercom 2 riders)

1. Bluetooth version: V5.4
2. Bluetooth intercom Distance: 2 riders /500 m
3. MESH intercom Distance: 32 riders /1000 m
4. Automatic answering of incoming calls
5. Talk/Standby time: 15h/ 350h
6. Siri and Voice control systems
7. **Battery: 1100mAh**
8. Noise cancelling system
9. Music sharing
10. FM Radio
11. Sound quality : Speed at 120km/h
with clear intercom
12. Double MIC
13. **Speaker:40mm**
14. USB Charge: Type-C
15. Waterproof design
16. Product size: 89*46*20mm
17. Color box size:16.5*11.5*16cm
Carton size: 44*42*32cm,
40 pcs / carton
N.W: 11.28kg / carton
G.W: 11.65kg/carton

HOT!!!





- | | |
|------------|------------|
| 1. TWS24A | 12. TWS24L |
| 2. TWS24B | 13. TWS24M |
| 3. TWS24C | 14. TWS24N |
| 4. TWS24D | 15. TWS24O |
| 5. TWS24E | 16. TWS24P |
| 6. TWS24F | 17. TWS24Q |
| 7. TWS24G | 18. TWS24R |
| 8. TWS24H | 19. TWS24S |
| 9. TWS24I | 20. TWS24T |
| 10. TWS24J | 21. TWS24U |
| 11. TWS24K | |

TWS Series

Product introduction



TWS24A

- 1.Color:black/white/Customization
- 2.(Bluetooth Ver. No): V5.3+EDR(4MIC ENC, could customize FF ANC or Hybrid ANC)
- 3.Battery in earbuds: 40mAh
- 4.充电仓Battery in case: 300mAh
- 5.ENC noise cancelation depth: -28+/-3dB
- 6.Normal mode call/BT music Play Time: 5-6H
- 7.Noise cancelation mode call/music play time :4-5H
- 8.Earbuds battery charging time: 1-2H
- 9.Battery of the case charging time:1-2H
- 10.Working frequency:2.402GHz-2.480GHz
- 11.Transmission distance: more than 10m
- 12.Waterproof level:IPX5
- 13.Bluetooth Profile: HSP , HFP , A2DP , AVRCP
- 14.Audio Code: AAC, SBC
- 15.Transmission power: 2级 -4dBm
- 16.Speaker:Φ10mm/32Ω
- 17.Charging Port: Type-C
- 18.Weight (device+package) : 93g
- 19.color box size: 90*85*30mm
- 20.Master carton size: 475*335*367mm (200pcs/carton)
Gloss weight: 19.5kg
- 21.Certification: CE,FCC,ROHS,REACH



HOT!



TWS24B

- 1.Color:black/white/Customization
- 2.Bluetooth Version: V5.3+EDR(4MIC ENC, could costomize FF ANC or Hybird ANC)
- 3.Battery in earbuds: 55mAh
- 4.Battery in case: 500mAh
- 5.ENC noise cancelation depth: -28+/-3dB
- 6.Normal mode call/BT music Play Time: 7-8H
- 7.Noise cancelation mode call/music play time :6-7H
- 8.Earbuds battery charging time: 1-2H
- 9.Battery of the case charging time:1-2H
- 10.Working frequency:2.402GHz-2.480GHz
- 11.Transmission distance: more than 10m
- 12.Waterproof level:IPX5
- 13.Bluetooth Profile: HSP , HFP , A2DP , AVRCP
- 14.Audio Code: AAC, SBC
- 15.Transmission power: 2级 -4dBm
- 16.Speaker:Φ10mm/32Ω
- 17.Charging Port: Type-C
- 18.Weight (device+package) : 93g
- 19.color box size: 90*85*30mm
- 20.Master carton size: 475*335*367mm (200pcs/carton)
Gloss weight: 19.5kg
- 21.Certification: CE,FCC,ROHS,REACH



HOT!



TWS24C

- 1.Color:black/white/Customization
- 2.Bluetooth Version: V5.3+EDR(4MIC ENC, could costomize FF ANC or Hybird ANC)
- 3.Battery in earbuds: 30mAh
- 4.Battery in case: 320mAh
- *ENC noise cancelation depth: -28+/-3dB
- 5.Normal mode call/BT music Play Time: 5-6H
- 6.Noise cancelation mode call/music play time :4-5H
- 7.Earbuds battery charging time: 1-2H
- 8.Battery of the case charging time:1-2H
- 9.Working frequency:2.402GHz-2.480GHz
- 10.Transmission distance: more than 10m
- 11.Waterproof level:IPX5
- 12.Bluetooth Profile: HSP , HFP , A2DP , AVRCP
- 13.Audio Code: AAC, SBC
- 14.Transmission power: 2级 -4dBm
- 15.Speaker:Φ10mm/32Ω
- 16.Charging Port: Type-C
- 17.Weight (device+package) : 93g
- 18.color box size: 90*85*30mm
- 19.Master carton size: 475*335*367mm (200pcs/carton)
Gloss weight: 19.5kg
- 20.Certification: CE,FCC,ROHS,REACH



HOT!!!



TWS24D

- 1.Color:black/white/Customization
- 2.Bluetooth Version: V5.3+EDR(4MIC ENC, could customize FF ANC or Hybrid ANC)
- 3.Battery in earbuds: 100mAh
- 4.Battery in case: 350mAh
- 5.ENC noise cancelation depth: -28+/-3dB
- 6.Normal mode call/BT music Play Time: 12-14H
- 7.Noise cancelation mode call/music play time :10-12H
- 8.Earbuds battery charging time: 1-2H
- 9.Battery of the case charging time:1-2H
- 10.Working frequency:2.402GHz-2.480GHz
- 11.Transmission distance: more than 10m
- 12.Waterproof level:IPX6
- 13.Bluetooth Profile: HSP , HFP , A2DP , AVRCP
- 14.Audio Code: AAC, SBC
- 15.Transmission power: 2级 -4dBm
- 16.Speaker:Φ10mm/32Ω
- 17.Charging Port: Type-C
- 18.Weight (device+package) : 93g
- 19.color box size: 90*85*30mm
- 20.Master carton size: 475*335*367mm (200pcs/carton)
Gross weight: 19.5kg
- 21.Certification: CE,FCC,ROHS,REACH



HOT!!!



TWS24E

- 1.Color:black/white/Customization
- 2.Bluetooth Version: V5.3+EDR
- 3.Battery in earbuds: 100mAh
- 4.Battery in case: 350mAh
- 5.ENC noise cancelation depth: -28+/-3dB
- 6.Normal mode call/BT music Play Time: 12-14H
- 7.Noise cancelation mode call/music play time :10-12H
- 8.Earbuds battery charging time: 1-2H
- 9.Battery of the case charging time:1-2H
- 10.Working frequency:2.402GHz-2.480GHz
- 11.Transmission distance: more than 10m
- 12.Waterproof level:IPX4
- 13.Bluetooth Profile: HSP , HFP , A2DP , AVRCP
- 14.Audio Code: AAC, SBC
- 15.Transmission power: 2级 -4dBm
- 16.Speaker:Φ10mm/16Ω
- 17.Charging Port: Type-C
- 18.Weight (device+package) : 136g
- 19.color box size: 143*79*30mm
- 20.Master carton size: 480*302*452mm (100pcs/carton)
Gloss weight: 21.4kg
- 21.Certification: CE,FCC,ROHS,REACH



HOT!!!





Sound of Sports

TWS24F

- 1.Color:black/white/Customization
- 2.Bluetooth Version: V5.3+EDR(4MIC ENC, could costomize FF ANC or Hybird ANC)
- 3.Battery in earbuds: 30mAh
- 4.Battery in case: 320mAh
- 5.ENC noise cancelation depth: -28+/-3dB
- 6.Normal mode call/BT music Play Time: 5-6H
- 7.Noise cancelation mode call/music play time :4-5H
- 8.Earbuds battery charging time: 1-2H
- 9.Battery of the case charging time:1-2H
- 10.Working frequency:2.402GHz-2.480GHz
- 11.Transmission distance: more than 10m
- 12.Waterproof level:IPX5
- 13.Bluetooth Profile: HSP , HFP , A2DP , AVRCP
- 14.Audio Code: AAC, SBC
- 15.Transmission power: 2级 -4dBm
- 16.Speaker:Φ10mm/32Ω
- 17.Charging Port: Type-C
- 18.Weight (device+package) : 93g
- 19.color box size: 90*85*30mm
- 20.Master carton size: 475*335*367mm (200pcs/carton)
Gloss weight: 19.5kg
- 21.Certification: CE,FCC,ROHS,REACH



HOT!!!



TWS24G

1. Color: black/white/Customization
 2. Bluetooth Version: V5.3+EDR(FF ANC+4MIC ENC, could customize Hybrid ANC+ 6MIC ENC or ENC)
- *耳机电池Battery in earbuds: 40mAh
 - *充电仓Battery in case: 400mAh
 - *ANC noise cancelation depth: -25+/-3dB
 - *ENC noise cancelation depth: -28+/-3dB
 - *正常模式通话/音乐时间Normal mode call/BT music Play Time: 5-6H
 - *降噪模式通话/音乐时间Noise cancelation mode call/music play time :4-5H
 - *耳机充电时间Earbuds battery charging time: 1-2H
 - *充电仓充电时间Battery of the case charging time:1-2H
 - *工作频率Working frequency:2.402GHz-2.480GHz
 - *传输距离Transmission distance: more than 10m
 - *防水等级Waterproof level:IPX5
 - *蓝牙协议Bluetooth Profile: HSP , HFP , A2DP , AVRCP
 - *音频代码Audio Code: AAC, SBC
 - *传输功率Transmission power: 2级 -4dBm
 - *喇叭Speaker:Φ10mm/32Ω
 - *充电端口Charging Port: Type-C
 - *全套重量含包装Weight (device+package) : 106g
 - *彩盒尺寸 color box size: 95*95*37mm
 - *外箱尺寸Master carton size: 500*375*215mm (100pcs/carton)
 - 毛重Gross weight: 11.8kg
 - *认证Certification: CE,FCC,ROHS,REACH



HOT!!!



TWS24G

- 1.Color:black/white/Customization
- 2.Bluetooth Version: V5.3+EDR(FF ANC+4MIC ENC, could customize Hybird ANC+ 6MIC ENC or ENC)
- 3.Battery in earbuds: 40mAh
- 4.Battery in case: 400mAh
- 5.ANC noise cancelation depth: -25+/-3dB
- 6.ENC noise cancelation depth: -28+/-3dB
7. Normal mode call/BT music Play Time: 5-6H
- 8.Noise cancelation mode call/music play time :4-5H
- 9.Earbuds battery charging time: 1-2H
- 10.Battery of the case charging time:1-2H
- 11.Working frequency:2.402GHz-2.480GHz
- 12.Transmission distance: more than 10m
- 13.Waterproof level:IPX5
- 14.Bluetooth Profile: HSP , HFP , A2DP , AVRCP
- 15.Audio Code: AAC, SBC
- 16.Transmission power: 2级 -4dBm
- 17.Speaker:Φ10mm/32Ω
- 18.Charging Port: Type-C
- 19.Weight (device+package) : 106g
- 20.color box size: 95*95*37mm
- 21.Master carton size: 500*375*215mm (100pcs/carton)
Gross weight: 11.8kg
- 22.Certification: CE,FCC,ROHS,REACH



HOT!!!

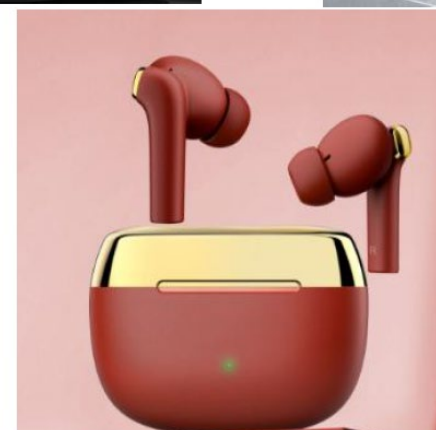
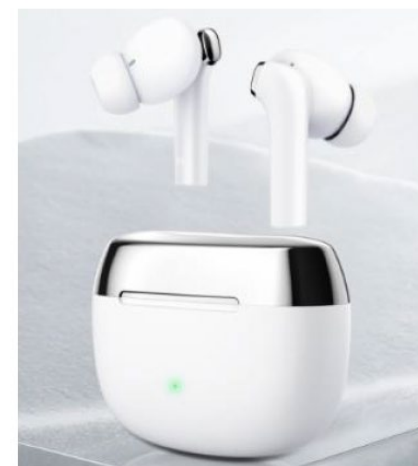


TWS24H

- 1.Color:black/white/Customization
- 2.Bluetooth Version: V5.3+EDR(4MIC ENC, could customize FF ANC or Hybird ANC)*耳机电池Battery in earbuds: 40mAh
- 3.Battery in case: 300mAh
- 4.ENC noise cancelation depth: -28+/-3dB
- 5.Normal mode call/BT music Play Time: 5-6H
- 6.Noise cancelation mode call/music play time :4-5H
- 7.Earbuds battery charging time: 1-2H
- 8.Battery of the case charging time:1-2H
- 9.Working frequency:2.402GHz-2.480GHz
- 10.Transmission distance: more than 10m
- 11.Waterproof level:IPX5
- 12.Bluetooth Profile: HSP , HFP , A2DP , AVRCP
- 13.Audio Code: AAC, SBC
- 14.Transmission power: 2级 -4dBm
- 15.Speaker:Φ10mm/32Ω
- 16.Charging Port: Type-C
- 17.Weight (device+package) : 93g
- 18.Color box size: 90*85*30mm
- 19.Master carton size: 475*335*367mm (200pcs/carton)
Gloss weight: 19.5kg
- 20.Certification: CE,FCC,ROHS,REACH



HOT!!!





Sound of Sports

TWS24I

- 1.Color:black/white/Customization
- 2.Bluetooth Version: V5.3+EDR(4MIC ENC, could customize FF ANC or Hybird ANC)
- 3.Battery in earbuds: 40mAh
- 4.Battery in earbuds: 40mAh
- 5.Battery in case: 300mAh
- 6.ENC noise cancelation depth: -28+/-3dB
- 7.Normal mode call/BT music Play Time: 5-6H
- 8.Noise cancelation mode call/music play time :4-5H
- 9.Earbuds battery charging time: 1-2H
- 10.Battery of the case charging time:1-2H
- 11.Working frequency:2.402GHz-2.480GHz
- 12.Transmission distance: more than 10m
- 13.Waterproof level:IPX5
- 14.Bluetooth Profile: HSP , HFP , A2DP , AVRCP
- 15.Audio Code: AAC, SBC
- 16.Transmission power: 2级 -4dBm
- 17.Speaker:Φ10mm/32Ω
- 18.Charging Port: Type-C
- 19.Weight (device+package) : 93g
- 20.color box size: 90*85*30mm
- 21.Master carton size: 475*335*367mm (200pcs/carton)
Gloss weight: 19.5kg
- 22.Certification: CE,FCC,ROHS,REACH



HOT!!!



TWS24J

- 1.Color:black/white/Customization
- 2.Bluetooth Version: V5.3+EDR(FF ANC+4MIC ENC, could customize Hybird ANC or ENC)
- 3.Battery in earbuds: 40mAh
- 4.Battery in case: 400mAh
- 5.ANC noise cancelation depth: -25+/-3dB
- 6.ENC noise cancelation depth: -28+/-3dB
- 7.Normal mode call/BT music Play Time: 5-6H
- 8.Noise cancelation mode call/music play time :4-5H
- 9.Earbuds battery charging time: 1-2H
- 10.Battery of the case charging time:1-2H
- 11.Working frequency:2.402GHz-2.480GHz
- 12.Transmission distance: more than 10m
- 13.Waterproof level:IPX5
- 14.Bluetooth Profile: HSP , HFP , A2DP , AVRCP
- 15.Audio Code: AAC, SBC
- 16.Transmission power: 2级 -4dBm
- 17.Speaker:Φ10mm/32Ω
- 18.Charging Port: Type-C
- 19.Weight (device+package) : 106g
- 20.Color box size: 95*95*37mm
- 21.Master carton size: 500*375*215mm (100pcs/carton)
Gross weight: 11.8kg
- 22.Certification: CE,FCC,ROHS,REACH



HOT!!!





Sound of Sports

TWS24K

- 1.Color:black/white/Customization
- 2.Bluetooth Version: V5.3+EDR(Hybrid ANC+4MIC ENC, could customize FF ANC or ENC)
- 3.Battery in earbuds: 40mAh
- 4.Battery in case: 300mAh
- 5.ANC noise cancelation depth: -38+/-3dB
- 6.ENC noise cancelation depth: -28+/-3dB
- 7.Normal mode call/BT music Play Time: 6-7H
- 8.Noise cancelation mode call/music play time :5-6H
- 9.Earbuds battery charging time: 1-2H
- 10.Battery of the case charging time:1-2H
- 11.Working frequency:2.402GHz-2.480GHz
- 12.Transmission distance: more than 10m
- 13.Waterproof level:IPX5
- 14.Bluetooth Profile: HSP , HFP , A2DP , AVRCP
- 15.Audio Code: AAC, SBC
- 16.Transmission power: 2级 -4dBm
- 17,Speaker:Φ10mm/32Ω
- 18.Charging Port: Type-C
- 19.Weight (device+package) : 106g
- 20.color box size: 95*95*37mm
- 21.Master carton size: 500*375*215mm (100pcs/carton)
Gross weight: 11.8kg
- 22.Certification: CE,FCC,ROHS,REACH



HOT!!!



TWS24L

- 1.Color:black/white/Customization
- 2.Bluetooth Version: V5.3+EDR(Hybrid ANC+6MIC ENC, could customize FF ANC or ENC)
- 3.Battery in earbuds: 40mAh
- 4.Battery in case: 300mAh
- 5.ANC noise cancelation depth: -35+/-3dB
- 6.ENC noise cancelation depth: -33+/-3dB
7. Normal mode call/BT music Play Time: 5-6H
- 8.Noise cancelation mode call/music play time :4-5H
- 9.Earbuds battery charging time: 1-2H
- 10.Battery of the case charging time:1-2H
- 11.Working frequency:2.402GHz-2.480GHz
- 12.Transmission distance: more than 10m
- 13.Waterproof level:IPX5
- 14.Bluetooth Profile: HSP , HFP , A2DP , AVRCP
- 15.Audio Code: AAC, SBC
- 16.Transmission power: 2级 -4dBm
- 17.Speaker:Φ10mm/32Ω
- 18.Charging Port: Type-C
- 19.Weight (device+package) : 106g
- 20.Color box size: 95*95*37mm
- 21.Master carton size: 500*375*215mm (100pcs/carton)
Gloss weight: 11.8kg
- 22.Certification: CE,FCC,ROHS,REACH



HOT!!!



TWS24M

- 1.Color:black/white/Customization
- 2.Bluetooth Version: V5.3+EDR(ENC, could customize ANC)
- 3.Battery in earbuds: 50mAh
- 4.Battery in case: 500mAh
- 5.Normal mode call/BT music Play Time: 6-7H
- 6.Noise cancelation mode call/music play time :5-6H
- 7.Earbuds battery charging time: 1-2H
- 8.Battery of the case charging time:1-2H
- 9.Working frequency:2.402GHz-2.480GHz
- 10.Transmission distance: more than 10m
- 11.Waterproof level:IPX7
- 12.Bluetooth Profile: HSP , HFP , A2DP , AVRCP
- 13.Audio Code: AAC, SBC
- 14.Transmission power: 2级 -4dBm
- 15.Speaker:Φ10mm/16Ω
- 16.Charging Port: Type-C
- 17.Weight (device+package) : 168g
- 18.color box size: 120*103*46mm
- 19.Master carton size: 545*485*255mm (100pcs/carton)
Gloss weight: 18.1kg
- 20.Certification: CE,FCC,ROHS,REACH



HOT!!!



TWS24N

- 1.Color:black/white/Customization
- 2.Bluetooth Version: V5.3+EDR(ENC, could customize ANC)
- 3.Battery in earbuds: 50mAh
- 4.Battery in case: 500mAh
- 5.Normal mode call/BT music Play Time: 6-7H
- 6.Noise cancelation mode call/music play time :5-6H
- 7.Earbuds battery charging time: 1-2H
- 8.Battery of the case charging time:1-2H
- 9.Working frequency:2.402GHz-2.480GHz
- 10.Transmission distance: more than 10m
- 11.Waterproof level:IPX7
- 12.Bluetooth Profile: HSP , HFP , A2DP , AVRCP
- 13.Audio Code: AAC, SBC
- 14.Transmission power: 2级 -4dBm
- 15.Speaker:Φ10mm/16Ω
- 16.Charging Port: Type-C
- 17.Weight (device+package) : 168g
- 18.color box size: 120*103*46mm
- 19.Master carton size: 545*485*255mm (100pcs/carton)
Gross weight: 18.1kg
- 20.Certification: CE,FCC,ROHS,REACH



HOT!!!



TWS240

- 1.Color:black/white/Customization
- 2.Bluetooth Version: V5.3+EDR(ENC, could customize ANC)
- 3.Battery in earbuds: 50mAh
- 4.Battery in case: 500mAh
- 5.Normal mode call/BT music Play Time: 6-7H
- 6.Noise cancelation mode call/music play time :5-6H
- 7.Earbuds battery charging time: 1-2H
- 8.Battery of the case charging time:1-2H
- 9.Working frequency:2.402GHz-2.480GHz
- 10.Transmission distance: more than 10m
- 11.Waterproof level:IPX7
- 12.Bluetooth Profile: HSP , HFP , A2DP , AVRCP
- 13.Audio Code: AAC, SBC
- 14.Transmission power: 2级 -4dBm
- 15.Speaker:Φ10mm/16Ω
- 16.Charging Port: Type-C
- 17.Weight (device+package) : 168g
- 18.color box size: 120*103*46mm
- 19.Master carton size: 545*485*255mm (100pcs/carton)
Gloss weight: 18.1kg
- 20.Certification: CE,FCC,ROHS,REACH



HOT!!!



TWS24P

- 1.Color:black/white/Customization
- 2.Bluetooth Version: V5.3+EDR(ENC, could customize ANC)
- 3.Battery in earbuds: 50mAh
- 4.Battery in case: 500mAh
- 5.Normal mode call/BT music Play Time: 6-7H
- 6.Noise cancelation mode call/music play time :5-6H
- 7.Earbuds battery charging time: 1-2H
- 8.Battery of the case charging time:1-2H
- 9.Working frequency:2.402GHz-2.480GHz
- 10.Transmission distance: more than 10m
- 11.Waterproof level:IPX7
- 12.Bluetooth Profile: HSP , HFP , A2DP , AVRCP
- 13.Audio Code: AAC, SBC
- 14.Transmission power: 2级 -4dBm
- 15.Speaker:Φ10mm/16Ω
- 16.Charging Port: Type-C
- 17.Weight (device+package) : 168g
- 18.color box size: 120*103*46mm
- 19.Master carton size: 545*485*255mm (100pcs/carton)
- 20.Gross weight: 18.1kg
- 21.Certification: CE,FCC,ROHS,REACH



HOT!!!



TWS24Q

- 1.Color:black/white/Customization
- 2.Bluetooth Version: V5.3+EDR(ENC, could customize ANC)
- 3.Battery in earbuds: 50mAh
- 4.Battery in case: 1200mAh
- 5.Normal mode call/BT music Play Time: 6-7H
- 6.Noise cancelation mode call/music play time :5-6H
- 7.Earbuds battery charging time: 1-2H
- 8.Battery of the case charging time:2-3H
- 9.Working frequency:2.402GHz-2.480GHz
- 10.Transmission distance: more than 10m
- 11.Waterproof level:IPX7
- 12.Bluetooth Profile: HSP , HFP , A2DP , AVRCP
- 13.Audio Code: AAC, SBC
- 14.Transmission power: 2级 -4dBm
- 15.Speaker:Φ10mm/16Ω
- 16.Charging Port: Type-C
- 17.Weight (device+package) : 205g
- 18.color box size: 116*97*45mm
- 19.Master carton size: 505*475*250mm (100pcs/carton)
Gloss weight: 21.3kg
- 20.Certification: CE,FCC,ROHS,REACH



HOT!!!



TWS24R

- 1.Color:black/white/Customization
- 2.Bluetooth Version: V5.3+EDR (ENC)
- 3.Battery in earbuds: 50mAh
- 4.Battery in case: 500mAh
- 5.ENC noise cancelation depth: 25+/-3dB
- 6.Normal mode call/BT music Play Time: 6-7H
- 7.Noise cancelation mode call/music play time :5-6H
- 8.Earbuds battery charging time: 1-2H
- 9.Battery of the case charging time:1-2H
- 10.Working frequency:2.402GHz-2.480GHz
- 11.Transmission distance: more than 10m
- 12.Waterproof level:IPX4
- 13.Bluetooth Profile: HSP , HFP , A2DP , AVRCP
- 14.Audio Code: AAC, SBC
- 15.Transmission power: 2级 -4dBm
- 16.Speaker:Φ10mm/16Ω
- 17.Charging Port: Type-C
- 18.Weight (device+package) : 113g
- 19.color box size: 95*95*37mm
- 20.Master carton size: 500*375*215mm (100pcs/carton)
Gloss weight: 11.5kg
- 21.Certification: CE,FCC,ROHS,REACH



HOT!!!





Sound of Sports

TWS24S

- 1.Color:black/white/Customization
- 2.Bluetooth Version: V5.3+EDR (ENC)
- 3.Battery in earbuds: 50mAh
- 4.Battery in case: 1800mAh
- 5.ENC noise cancelation depth: 25+/-3dB
- 6.Normal mode call/BT music Play Time: 6-7H
- 7.Noise cancelation mode call/music play time :5-6H
- 8.Earbuds battery charging time: 1-2H
- 9.Battery of the case charging time:1-2H
- 10.Working frequency:2.402GHz-2.480GHz
- 11.Transmission distance: more than 10m
- 12.Waterproof level:IPX4
- 13.Bluetooth Profile: HSP , HFP , A2DP , AVRCP
- 14.Audio Code: AAC, SBC
- 15.Transmission power: 2级 -4dBm
- 16.Speaker:Φ10mm/16Ω
- 17.Charging Port: Type-C
- 18.Weight (device+package) : 150g
- 19.Color box size: 95*95*37mm
- 20.Master carton size: 500*375*215mm (100pcs/carton)
Gross weight: 16.2kg
- 21.Certification: CE,FCC,ROHS,REACH



HOT!!!



TWS24T

- 1.Color:black/white/Customization
- 2.Bluetooth Version: V5.3+EDR (ENC)
- 3.Battery in earbuds: 50mAh
- 4.Battery in case: 1200mAh
- 5.noise cancelation depth: 25+/-3dB
- 6.Normal mode call/BT music Play Time: 6-7H
- 7.Noise cancelation mode call/music play time :5-6H
- 8.Earbuds battery charging time: 1-2H
- 9.Battery of the case charging time:1-2H
- 10.Working frequency:2.402GHz-2.480GHz
- 11.Transmission distance: more than 10m
- 12.Waterproof level:IPX4
- 13.Bluetooth Profile: HSP , HFP , A2DP , AVRCP
- 14.Audio Code: AAC, SBC
- 15.Transmission power: 2级 -4dBm
- 16.Speaker:Φ10mm/16Ω
- 17.Charging Port: Type-C
- 18.Weight (device+package) : 175g
- 19.color box size: 125*95*35mm
- 20.Master carton size: 370*265*495mm (100pcs/carton)
Gloss weight: 18.5kg
- 21.Certification: CE,FCC,ROHS,REACH



HOT!!!



TWS24U

- 1.Color:black/white/Customization
- 2.Bluetooth Version: V5.3+EDR (ENC)
- 3.Battery in earbuds: 1000mAh
- 4.ENC noise cancelation depth: 30+/-3dB
- 5.Music Play Time: 140 - 150H
- 6.Call time :80 -85H
- 7.Earbuds battery charging time: 1-2H
- 8.Working frequency:2.402GHz-2.480GHz
- 9.Transmission distance: more than 10m
- 10.Waterproof level:IPX4
- 11.Bluetooth Profile: HSP , HFP , A2DP , AVRCP
- 12.Audio Code: AAC, SBC
- 13.Transmission power: 2级 -4dBm
- 14.Speaker:Φ36mm/32Ω
- 15.Charging Port: Type-C
- 16.Weight (device+package) : 290g
- 17.color box size: 215*182*67mm
- 18.Master carton size: 580*450*580mm (48pcs/carton)
- 19.Gross weight: 15.4kg
- 20.Certification: CE,FCC,ROHS,REACH



HOT!!!



1. **M1 ANC:** Material appearance, three-dimensional cotton ear cups.
Supports folding, stretching and flipping.

2. **M2 ANC:** Rubber appearance, leather head arch, three-dimensional cotton ear cups. Supports stretching and flipping.

3. **M3 ANC:** Rubber appearance, three-dimensional cotton ear cups.
Supports stretching, folding and flipping.

4. **M5 ANC:** Spray-painted fabric appearance, fabric ear cups, and knob buttons. Supports stretching and flipping.

5. **M6 ANC:** Spray-painted appearance. Three-dimensional cotton ear cups with knob buttons.
Supports stretching, folding and flipping.

6. **M7 ANC:** Material appearance, three-dimensional cotton ear cups.
Supports stretching, folding and flipping.

7. **M8 ANC:** Material appearance, three-dimensional cotton ear cups.
Supports stretching, folding and flipping.

8. **M9 ANC:** Material appearance, three-dimensional cotton ear cups.
Supports stretching, folding and flipping.

True ANC Series

Product introduction

9. **M10 ANC:** Craftsmanship appearance, three-dimensional cotton ear cups.

Supports scalability. Folding. Flip.

10. **M11 ANC:** Craftsmanship appearance, three-dimensional cotton ear cups.

Supports scalability. Folding. Flip.

11. **M12ANC:** Craftsmanship appearance, three-dimensional cotton ear cups.

Supports scalability. Folding. Flip.

12. **M13 ANC:** Craftsmanship appearance, three-dimensional cotton ear cups.

Supports scalability. Folding. Flip.





Sound of Sports

M1 ANC

1. Bluetooth version: 5.4
2. Chip type: Zhongke Lanxun (5712C)
3. Battery type: Polymer lithium battery
4. Functions: Bluetooth, AUX (3.5mm round hole)
5. Noise reduction degree: Deep noise reduction -25db
6. Battery capacity: 350 mah with protection board
7. Charging time: About 2 hours
8. Usage duration: More than 40 hours
9. Standby time: approximately 200 hours
10. Speaker: 40mm large dynamic driver
11. Charging port: Type-C
12. Connection distance: Barrier-free within 10 m.
13. Input current: 5V1A
14. Speaker sensitivity: $108.5 \pm 3\text{db}$
15. Speaker impedance value: $32\Omega \pm 15\%$
16. Microphone sensitivity: $-42\text{db} \pm 2\text{db}$
17. Frequency range: 20- 20,000 Hz
18. Signal-to-noise ratio: 88DB
19. Maximum rated power: 50mW
Minimum rated power: 25mW
20. ① Product dimensions: 20.5*16.7*8cm
The headphones are laid flat on the side with a height of 6cm.
② Including packaging size: 22.3*20.7*6.8cm
21. Bare machine weight: 210g; Vacuum forming: 35g
Weight including packaging: 365g
22. Box size: 73.5*49*65.5cm, total box size: 60 pieces
Net weight: 19.5kg/ box
Gross weight: 22.7kg/ box



NEW!!!





Sound of Sports

M2 ANC

1. Bluetooth version: 5.4
2. Chip type: Zhongke Lanxun (5632C)
3. Battery type: Polymer lithium battery
4. Functions: Bluetooth, AUX (3.5mm round hole)
5. Noise reduction degree: Deep noise reduction -25db
6. Battery capacity: 350 mah with protection board
7. Charging time: About 2 hours
8. Usage duration: More than 40 hours
9. Standby time: approximately 200 hours
10. Speaker: 40mm large dynamic driver
11. Charging port: Type-C
12. Connection distance: Barrier-free within 10 meters
13. Input current: 5V1A
14. Speaker sensitivity: $108.5 \pm 3\text{db}$
15. Speaker impedance value: $32\Omega \pm 15\%$
16. Microphone sensitivity: $-42\text{db} \pm 2\text{db}$
17. Frequency range: 20- 20,000 Hz
18. Signal-to-noise ratio: 88DB
19. Maximum rated power: 50mW
Minimum rated power: 25mW
20. ① Product dimensions: 19.5*17.5*8.2cm
(The height of the side when the headphones are laid flat is 4.8cm)
- ② Including packaging size: 22.3*20.7*6.8cm
21. Bare machine weight: 200g; Vacuum forming: 35g
Weight including packaging: 355g
22. Box size: 73.5*49*65.5cm, total box size: 60 pieces
Net weight: 19.5kg/ box Gross weight: 22.7kg/ box



NEW!!!

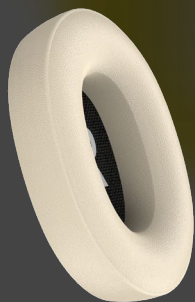




Sound of Sports

M3 ANC

1. Bluetooth version: 5.4
2. Chip type: Zhongke Lanxun (5712C)
3. Battery type: Polymer lithium battery
4. Functions: Bluetooth, AUX (3.5mm round hole)
5. Noise reduction degree: Deep noise reduction -25db
6. Battery capacity: 350 mah with protection board
7. Charging time: About 2 hours
8. Usage duration: More than 40 hours
9. Standby time: approximately 200 hours
10. Speaker: 40mm large dynamic driver
11. Charging port: Type-C
12. Connection distance: Barrier-free within 10 meters
13. Input current: 5V1A
14. Speaker sensitivity: $108.5 \pm 3\text{db}$
15. Speaker impedance value: $32\Omega \pm 15\%$
16. Microphone sensitivity: $-42\text{db} \pm 2\text{db}$
17. Frequency range: 20- 20,000 Hz
18. Signal-to-noise ratio: 88DB
19. Maximum rated power: 50mW
Minimum rated power: 25mW
20. ① Product dimensions: 21*15.8*8cm
(The height of the side when the headphones are laid flat is 5.8cm)
- ② Including packaging size: 22.3*20.7*6.8cm
21. Bare machine weight: 220g; Vacuum forming: 35g
Weight including packaging: 375g
22. Box size: 73.5*49*65.5cm, total box size: 60 pieces
Net weight: 19.5kg/ box Gross weight: 22.7kg/ box



NEW!!!



M5 ANC

1. Bluetooth version: 5.4
2. Chip type: Zhongke Lanxun (Model: 5712C)
3. Battery type: Polymer lithium battery
4. Functions: Bluetooth, AUX(3.5mm round hole),TFcards.
5. Keys: ① Left circular knob key: Single press: Pause/Play
Rotate to adjust the volume: Rotate counterclockwise (lower)
Rotate clockwise (increase).
Press twice in a row: Next piece
Press three times in a row: the previous piece
Long press for three seconds: Summon the voice assistant
- ② Right button: Long press: Power on/off
Single press: Turn on/off noise cancellation
6. Battery capacity: 400 mah with protection board
7. Charging time: About 2 hours
8. Usage time: About 40 hours
9. Standby time: approximately 200 hours
10. Speaker: 40mm large dynamic driver
11. Charging port: Type-C
12. Transmission distance: Unobstructed connection within 10 m.
13. Transmission power: 5V1A
14. Noise reduction degree: Deep noise reduction -25db
15. Speaker sensitivity: 108.5±3db
16. Speaker impedance: 32Ω±15%
17. Microphone sensitivity: -42 dB ±2db
18. Frequency range: 20- 20,000 Hz
19. Signal-to-noise ratio: 88DB
20. Maximum rated power: 50mW; Minimum rated power: 25mW
21. Bare machine weight: 205g; Vacuum forming weight: 40g
Single box weight: 205g, including packaging weight: 505g
22. Product Dimensions: 20.8*17.1*8.5cm
(The side height of the headphones when laid flat is 4cm)
Packaging size: 21.8*20.8*6.1cm
23. Box size: 95*48*64.5cm, Total box size: 60 pieces
Net weight: 30kg/ box Gross weight: 33kg/ box



NEW!!!



M6 ANC

1. Bluetooth version: 5.4
2. Chip type: Zhongke Lanxun (Model: 5712C)
3. Battery type: Polymer lithium battery
4. Functions: Bluetooth, AUX(3.5mm round hole)
5. Keys: ① Left circular knob key: Single press: Pause/Play
Rotate to adjust the volume: Rotate counterclockwise (lower)
Rotate clockwise (increase).

Press twice in a row: Next piece

Press three times in a row: the previous piece

Long press for three seconds: Summon the voice assistant

- ② Right button: Long press: Power on/off
Single press: Turn on/off noise cancellation

6. Battery capacity: 350 mah with protection board

7. Charging time: About 2 hours

8. Usage time: About 40 hours

9. Standby time: approximately 200 hours

10. Speaker: 40mm large dynamic driver

11. Charging port: Type-C

12. Transmission distance: Unobstructed connection within 10 m.

13. Transmission power: 5V1A

14. Noise reduction degree: Deep noise reduction -25db

15. Speaker sensitivity: 108.5±3db

16. Speaker impedance: 32Ω±15%

17. Microphone sensitivity: -42 dB ±2db

18. Frequency range: 20- 20,000 Hz

19. Signal-to-noise ratio: 88DB

20. Maximum rated power: 50mW; Minimum rated power: 25mW

21. Bare machine weight: 180g; Vacuum forming weight: 30g
including packaging weight: 295g

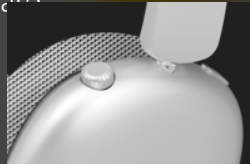
22. Product Dimensions: 21*16.8*8.5cm

(The side height of the headphones when laid flat is 4.2cm)

Packaging size: 20.8*20*5.2cm

23. Box size: 67.5*46.5*64cm, Total box size: 60 pieces

Net weight: 18kg/ box Gross weight: 20kg/ box



NEW!!!



M7 ANC

1. Bluetooth version: 5.4
2. Chip type: Zhongke Lanxun (Model: 5712C)
3. Battery type: Polymer lithium battery
4. Functions: Bluetooth, AUX(3.5mm round hole)
5. Battery capacity: 350 mah with protection board
6. Charging time: About 2 hours
7. Usage duration: More than 40 hours
8. Standby time: approximately 200 hours
9. Speaker: 40mm large dynamic driver
10. Charging port: Type-C
11. Transmission distance: Seamless connection within 10 m.
12. Transmission power: 5V1A
13. Noise reduction degree: Deep noise reduction -25db
14. Speaker sensitivity: $108.5 \pm 3\text{db}$
15. Speaker impedance: $32\Omega \pm 15\%$
Microphone sensitivity: $-42\text{db} \pm 2\text{db}$
17. Frequency range: 20- 20,000 Hz
18. Signal-to-noise ratio: 88DB
19. Maximum rated power: 50mW
Minimum rated power: 25mW
20. Bare machine weight: 200g, vacuum forming weight: 30g
Weight including packaging: 325g
21. Product dimensions: 20.5*16.8*8cm (The height of the side when the headphones are laid flat is 5cm)
Packaging size: 21*18.5*6cm
22. Box size: 80.5*47.5*65cm.
Total number of pieces in a box: 80 pieces
Net weight: 28kg/ box
Gross weight: 31kg/ box



NEW!!!





Sound of Sports

M8ANC

1. Bluetooth version: 5.4
2. Chip type: Zhongke Lanxun (Model: 5632C)
3. Battery type: Polymer lithium battery
4. Functions: Bluetooth, AUX(3.5mm round hole)
5. Battery capacity: 350 mah with protection board
6. Charging time: About 2 hours
7. Usage duration: More than 40 hours
8. Standby time: approximately 200 hours
9. Speaker: 40mm large dynamic driver
10. Charging port: Type-C
11. Transmission distance: Seamless connection within 10 m.
12. Transmission power: 5V1A
13. Noise reduction degree: Deep noise reduction -25db
14. Speaker sensitivity: $108.5 \pm 3\text{db}$
15. Speaker impedance: $32\Omega \pm 15\%$
- Microphone sensitivity: $-42\text{db} \pm 2\text{db}$
17. Frequency range: 20- 20,000 Hz
18. Signal-to-noise ratio: 88DB
19. Maximum rated power: 50mW
Minimum rated power: 25mW
20. Bare machine weight: 185g, vacuum forming weight: 30g
Weight including packaging: 310g
21. Product dimensions: 20*16.8*7.5cm (The side height of the headphones when laid flat is 4.5cm)
Packaging size: 21*18.5*6cm
22. Box size: 80.5*47.5*65cm.
Total number of pieces in a box: 80 pieces
Net weight: 28kg/ box
Gross weight: 31kg/ box



NEW!!!



M9 ANC

1. Bluetooth version: 5.4
2. Chip type: Zhongke Lanxun (Model: 5632C)
3. Battery type: Polymer lithium battery
4. Functions: Bluetooth, AUX(3.5mm round hole)
5. Battery capacity: 350 mah with protection board
6. Charging time: About 2 hours
7. Usage duration: More than 40 hours
8. Standby time: approximately 200 hours
9. Speaker: 40mm large dynamic driver
10. Charging port: Type-C
11. Transmission distance: Seamless connection within 10 m.
12. Transmission power: 5V1A
13. Noise reduction degree: Deep noise reduction -25db
14. Speaker sensitivity: 108.5±3db
15. Speaker impedance: 32Ω±15%
16. Microphone sensitivity: -42db±2db
17. Frequency range: 20- 20,000 Hz
18. Signal-to-noise ratio: 88DB
19. Maximum rated power: 50mW
Minimum rated power: 25mW
20. Bare machine weight: 210g, vacuum forming weight: 30g
Weight including packaging: 335g
21. Product dimensions: 20.5*16.9*8cm (The height of the side when the headphones are laid flat is 4.2cm)
Packaging size: 21*18.5*6cm
22. Box size: 80.5*47.5*65cm.
Total number of pieces in a box: 80 pieces
Net weight: 28kg/ box
Gross weight: 31kg/ box



NEW!!!



M10 ANC

1. Bluetooth version: 5.4
2. Chip type: Zhongke Lanxun (Model: 5712C)
3. Battery type: Polymer lithium battery
4. Functions: Bluetooth, AUX(3.5mm round hole)
5. Battery capacity: 400 mah with protection board
6. Charging time: About 2 hours
7. Usage duration: More than 40 hours
8. Standby time: approximately 200 hours
9. Speaker: 40mm large dynamic driver
10. Charging port: Type-C
11. Transmission distance: Seamless connection within 10 m.
12. Transmission power: 5V1A
13. Noise reduction degree: Deep noise reduction -25db
14. Speaker sensitivity: 108.5±3db
15. Speaker impedance: 32Ω±15%
16. Microphone sensitivity: -42db±2db
17. Frequency range: 20- 20,000 Hz
18. Signal-to-noise ratio: 88DB
19. Maximum rated power: 50mW
Minimum rated power: 25mW
20. Single bare machine weight: 210g,
including packaging weight: 395g
21. Product box specifications and weight:
 - ① Box size: 70*41*71cm (60pcs)
Net weight: 25kg/ box Gross weight: 27.5kg/ box
 - ② Box size: 63*38*45cm (40pcs)
Net weight: 18.2kg/ box Gross weight: 21.2kg/ box
22. Bare machine size: 19*16.8*8cm
Packaging size: 21*18.4*5.9cm



HOT!!!



M11 ANC

1. Bluetooth version: 5.4
2. Chip type: Zhongke Lanxun (Model: 5632C)
3. Battery type: Polymer lithium battery
4. Functions: Bluetooth, AUX(3.5mm round hole)
5. Battery capacity: 400 mah with protection board
6. Charging time: About 2 hours
7. Usage duration: More than 40 hours
8. Standby time: approximately 200 hours
9. Speaker: 40mm large dynamic driver
10. Charging port: Type-C
11. Transmission distance: Seamless connection within 10 m.
12. Transmission power: 5V1A
13. Noise reduction degree: Deep noise reduction -25db
14. Speaker sensitivity: $108.5 \pm 3\text{db}$
15. Speaker impedance: $32\Omega \pm 15\%$
16. Microphone sensitivity: $-42\text{db} \pm 2\text{db}$
17. Frequency range: 20- 20,000 Hz
18. Signal-to-noise ratio: 88DB
19. Maximum rated power: 50mW
Minimum rated power: 25mW
20. Single bare machine weight: 195g,
including packaging weight: 410g
21. Product box specifications and weight:
 - ① Box size: 70*41*71cm (60pcs)
Net weight: 25kg/ box Gross weight: 27.5kg/ box
 - ② Box size: 63*38*45cm (40pcs)
Net weight: 18.2kg/ box Gross weight: 21.2kg/ box
22. Bare machine size: 19*16.8*8cm
Packaging size: 21*18.4*5.9cm

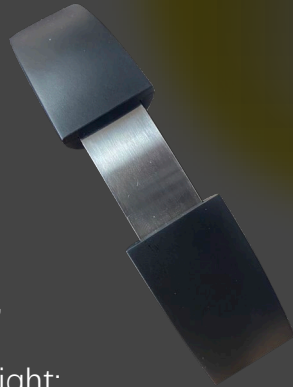


HOT!!!



M12 ANC

1. Bluetooth version: 5.4
2. Chip type: Zhongke Lanxun (Model: 5712C)
3. Battery type: Polymer lithium battery
4. Functions: Bluetooth, AUX(3.5mm round hole)
5. Battery capacity: 400 mah with protection board
6. Charging time: About 2 hours
7. Usage duration: More than 40 hours
8. Standby time: approximately 200 hours
9. Speaker: 40mm large dynamic driver
10. Charging port: Type-C
11. Transmission distance: Seamless connection within 10 m.
12. Transmission power: 5V1A
13. Noise reduction degree: Deep noise reduction -25db
14. Speaker sensitivity: 108.5±3db
15. Speaker impedance: 32Ω±15%
16. Microphone sensitivity: -42db±2db
17. Frequency range: 20- 20,000 Hz
18. Signal-to-noise ratio: 88DB
19. Maximum rated power: 50mW
Minimum rated power: 25mW
20. Single bare machine weight: 190g,
including packaging weight: 385g
21. Product box specifications and weight:
 - ① Box size: 70*41*71cm (60pcs)
Net weight: 25kg/ box Gross weight: 27.5kg/ box
 - ② Box size: 63*38*45cm (40pcs)
Net weight: 18.2kg/ box Gross weight: 21.2kg/ box
22. Bare machine size: 19*16.8*8cm
Packaging size: 21*18.4*5.9cm



HOT!!!





Sound of Sports

M13ANC

1. Bluetooth version: 5.4
2. Chip type: Zhongke Lanxun (Model: 5632C)
3. Battery type: Polymer lithium battery
4. Functions: Bluetooth, AUX(3.5mm round hole)
5. Battery capacity: 400 mah with protection board
6. Charging time: About 2 hours
7. Usage duration: More than 40 hours
8. Standby time: approximately 200 hours
9. Speaker: 40mm large dynamic driver
10. Charging port: Type-C
11. Transmission distance: Seamless connection within 10 m.
12. Transmission power: 5V1A
13. Noise reduction degree: Deep noise reduction -25db
14. Speaker sensitivity: 108.5±3db
15. Speaker impedance: 32Ω±15%
16. Microphone sensitivity: -42db±2db
17. Frequency range: 20- 20,000 Hz
18. Signal-to-noise ratio: 88DB
19. Maximum rated power: 50mW
Minimum rated power: 25mW
20. Single bare machine weight: 190g,
including packaging weight: 455g
21. Product box specifications and weight:
 - ① Box size: 70*41*71cm (60pcs)
Net weight: 25kg/ box Gross weight: 27.5kg/ box
 - ② Box size: 63*38*45cm (40pcs)
Net weight: 18.2kg/ box Gross weight: 21.2kg/ box
22. Bare machine size: 19*16.8*8cm
Packaging size: 21*18.4*5.9cm



HOT!!!



1.**FM1:** Student English Level 46 Listening Exam Special FM Headphones, also available for use with regular headphones. Supports Bluetooth and wired connection. Card slot is included. Features telescopic and flip functionality.

2.**FM2:** Smooth surface appearance, LED lighting design, can be turned off or on. Supports stretching and folding.

3.**FM3:** Smooth surface appearance, LED lighting design, can be turned off or on. Supports stretching and folding.

4.**FM5:** Smooth surface appearance, ordinary cotton ear cups. Supports stretching and folding

FM Series

Product introduction

- 5.**FM6:** Ordinary cotton ear cups.
Supports stretching and folding
- 6.**FM7:** Ordinary cotton ear cups.
Supports stretching and folding
- 7.**FM8:** Ordinary cotton ear cups.
Support scalability .Fold, flip.



FM1

1. Bluetooth version: 5.4
2. Chip type: Zhongke Lanxun (Model: 5605B)
3. Battery type: Polymer lithium battery
4. Functions: Bluetooth, AUX(3.5mm round hole), card (TF), FM
5. Battery capacity: 350 mah with protection board
6. Charging time: About 2 hours
7. Usage duration: It can be used for about 10 to 12 hours on a full charge
8. Standby time: approximately 150 hours
9. Speaker: 40mm large dynamic driver
10. Charging port: Type-C
11. Transmission distance: Seamless connection within 10 m.
12. Transmission power: 5V1A
13. Transmission frequency :2402MHz-2480MHZ
14. FM frequency: 60-108MHz
15. Speaker sensitivity :90dB/mW
16. Frequency range: 50hz-20khz
17. Signal-to-noise ratio: 88DB
18. Output power: 35mW
19. Impedance value :32Ω
20. (1) Product size: 20.8*17.5*8.5cm
The side height of the headphones after being laid flat is 5cm.
(2) Ear cup dimensions: Outer length, width and height: 9.5*8*2
Inner dimensions: length, width and height: 5.5*3.5*1
(3) Packaging size: 21*18.5*6
The weight of the bare machine is 180g, including 285g of packaging
21. Box size: 70*40*69cm,
total number of pieces in a box: 60 pieces
Net weight: 19.2 per box Gross weight: 22.2kg per box



HOT!!!





FM2 LED

1. Bluetooth version: 5.4
2. Chip type: Zhongke Lanxun (Model: 5605B)
3. Battery type: Polymer lithium battery
4. Functions: Bluetooth, AUX(3.5mm round hole), card (TF), FM
5. Battery capacity: 200 mah with protection board
6. Charging time: About 2 hours
7. Usage duration: Approximately 6 to 8 hours
8. Standby time: approximately 120 hours
9. Speaker: 40mm large dynamic driver
10. Charging port: Type-C
11. Transmission distance: Seamless connection within 10 m.
12. Transmission power: 5V1A
13. Speaker sensitivity :113+3dB
14. Frequency range: 20- 20,000 Hz
15. Signal-to-noise ratio: 88DB
16. Output rated power: 45mw
Maximum power: 100mW
17. Single bare machine weight: 170g
Weight including packaging: 270g
18. Product size: 20*17*8cm
Single package size: 18.5*14.4*8.4cm
19. Box size: 82.5*47*61.
Total number of boxes: 80 pieces
Net weight: 24kg/ box
Gross weight: 27kg/ box

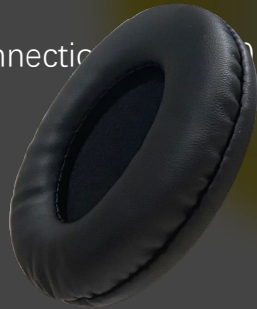


HOT!!!



FM3 LED

1. Bluetooth version: 5.4
2. Chip type: Zhongke Lanxun (Model: 5605B)
3. Battery type: Polymer lithium battery
4. Functions: Bluetooth, AUX(3.5mm round hole), card (TF), FM
5. Battery capacity: 200 mah with protection board
6. Charging time: About 2 hours
7. Usage duration: Approximately 6 to 8 hours
8. Standby time: approximately 120 hours
9. Speaker: 40mm large dynamic driver
10. Charging port: Type-C
11. Transmission distance: Seamless connection 10 m.
12. Transmission power: 5V1A
13. Speaker sensitivity :113+3dB
14. Frequency range: 20- 20,000 Hz
15. Signal-to-noise ratio: 88DB
16. Single bare machine weight: 170g
Weight including packaging: 270g
17. Product size: 20*17*8cm
Single package size: 18.5*14.4*8.4cm
18. Box size: 82.5*47*61cm.
Total number of pieces in a box: 80 pieces
Net weight: 24kg/ box
Gross weight: 27kg/ box



HOT!!!



FM5

1. Bluetooth version: 5.4
2. Chip type: Zhongke Lanxun (Model: 5605B)
3. Battery type: Polymer lithium battery
4. Functions: Bluetooth, AUX(3.5mm round hole), card (TF), FM
5. Battery capacity: 200 mah with protection board
6. Charging time: About 2 hours
7. Usage duration: Approximately 6 to 8 hours
8. Standby time: approximately 120 hours
9. Speaker: 40mm large dynamic driver
10. Charging port: Type-C
11. Transmission distance: Seamless connection
12. Transmission power: 5V1A
13. Speaker sensitivity :113+3dB
14. Frequency range: 20- 20,000 Hz
15. Signal-to-noise ratio: 88DB
16. Single bare machine weight: 170g
Weight including packaging: 270g
17. Product size: 20*17*8cm
Single package size: 18.5*14.4*8.4cm
18. Box size: 82.5*47*61cm.
Total number of pieces in a box: 80 pieces
Net weight: 24kg/ box
Gross weight: 27kg/ box



FM6

1. Bluetooth version: 5.4
2. Chip type: Zhongke Lanxun (Model: 5605B)
3. Battery type: Polymer lithium battery
4. Functions: Bluetooth, AUX(3.5mm round hole), card (TF), FM
5. Battery capacity: 200 mah with protection board
6. Charging time: About 2 hours
7. Usage duration: Approximately 6 to 8 hours
8. Standby time: approximately 120 hours
9. Speaker: 40mm large dynamic driver
10. Charging port: Type-C
11. Transmission distance: Seamless connection 10 m.
12. Transmission power: 5V1A
13. Speaker sensitivity :113+3dB
14. Frequency range: 20- 20,000 Hz
15. Signal-to-noise ratio: 88DB
16. Single bare machine weight: 170g
Weight including packaging: 280g
17. Product dimensions: 17.5*16*7cm
(4cm on the side when laid flat)
Single package size: 21*18.5*6cm
18. Box size: 80.5*47.5*65cm,
total number of pieces in a box: 80 pieces
Net weight: 28kg/ box
Gross weight: 31kg/ box



HOT!!!



FM7

1. Bluetooth version: 5.4
2. Chip type: Zhongke Lanxun (Model: 5605B)
3. Battery type: Polymer lithium battery
4. Functions: Bluetooth, AUX(3.5mm round hole), card (TF), FM
5. Battery capacity: 200 mah with protection board
6. Charging time: About 2 hours
7. Usage duration: Approximately 6 to 8 hours
8. Standby time: approximately 120 hours
9. Speaker: 40mm large dynamic driver
10. Charging port: Type-C
11. Transmission distance: Seamless connection 10 m.
12. Transmission power: 5V1A
13. Speaker sensitivity :113+3dB
14. Frequency range: 20- 20,000 Hz
15. Signal-to-noise ratio: 88DB
16. Single bare machine weight: 170g
Weight including packaging: 280g
17. Product dimensions: 17.5*16*7cm
(4cm on the side when laid flat)
Single package size: 21*18.5*6cm
18. Box size: 80.5*47.5*65cm,
total number of pieces in a box: 80 pieces
Net weight: 28kg/ box
Gross weight: 31kg/ box



HOT!!!



FM8

1. Bluetooth version: 5.4
2. Chip type: Zhongke Lanxun (Model: 5605B)
3. Battery type: Polymer lithium battery
4. Functions: Bluetooth, AUX(3.5mm round hole), card (TF), FM
5. Battery capacity: 200 mah with protection board
6. Charging time: About 2 hours
7. Usage duration: Approximately 6 to 8 hours
8. Standby time: approximately 120 hours
9. Speaker: 40mm large dynamic driver
10. Charging port: Type-C
11. Transmission distance: Seamless connection 10 m.
12. Transmission power: 5V1A
13. Speaker sensitivity :113+3dB
14. Frequency range: 20- 20,000 Hz
15. Signal-to-noise ratio: 88DB
16. Single bare machine weight: 170g
Weight including packaging: 280g
17. Product dimensions: 17.5*16*7cm
(4cm on the side when laid flat)
Single package size: 21*18.5*6cm
18. Box size: 80.5*47.5*65cm,
total number of pieces in a box: 80 pieces
Net weight: 28kg/ box
Gross weight: 31kg/ box



HOT!!!



- 1.PT1:** The LED light can be turned off or on.
Three-dimensional cotton full ear cover.
Supports stretching and folding. Flip.
- 2.PT2:** The LED light can be turned off or on.
Ordinary cotton ear muffs.
Supports stretching and folding.
- 3.PT3:** The LED light can be turned off or on.
Ordinary cotton ear muffs.
Supports stretching and folding.
- 4.PT5:** The LED light can be turned off or on.
Ordinary cotton ear muffs.
Supports stretching and folding.

Painting Series

Product introduction

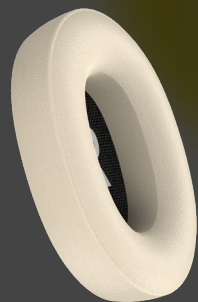




Sound of Sports

PT1LED

1. Bluetooth version: 5.4
2. Chip type: Zhongke Lanxun(Model: 5605B)
3. Battery type: Polymer lithium battery
4. Functions: Bluetooth, AUX(3.5mm round hole), FM (Both the "+" and "-" volume keys need to be held down simultaneously to activate.)
5. Feature: Press and hold the wave key for three seconds to freely turn the light on/off.
6. Battery capacity: 350 mah with protection board
7. Charging time: About 2 hours
8. Usage duration: approximately 8 to 12 hours
9. Standby time: approximately 150 hours
10. Speaker: 40mm large dynamic driver
11. Charging port: Type-C
12. Transmission distance: Seamless connection within 10 m.
13. Transmission power: 5V1A
14. Speaker sensitivity: 114db
15. Frequency range: 20- 20,000 Hz
16. Signal-to-noise ratio: 88DB
17. Impedance value :32Ω
18. Cable length: 1m+10%
19. Maximum rated power: 50mW
Minimum rated power: 25mW
20. Product size: 20*16.7*7.5cm
The height of the headphones laid flat on the side is: 4.5cm.
Packaging size: 18.5*14.4*8.6cm
21. Bare machine weight: 160g,
including packaging weight: 250g
22. Box size: 82.5*47.5*61cm.
Total number of pieces in a box: 80 pieces
Net weight: 28kg/ box Gross weight: 31kg/ box



NEW!!!



PT2LED

1. Bluetooth version: 5.4
2. Chip type: Zhongke Lanxun (Model: 5605B)
3. Battery type: Polymer lithium battery
4. Functions: Bluetooth, AUX(3.5mm round hole), card (TF), FM
5. Battery capacity: 200 mah with protection board
6. Charging time: About 2 hours
7. Usage duration: Approximately 6 to 8 hours
8. Standby time: approximately 120 hours
9. Speaker: 40mm large dynamic driver
10. Charging port: Type-C
11. Transmission distance: Seamless connection within 10 m.
12. Transmission power: 5V1A
13. Speaker sensitivity :113+3dB
14. Frequency range: 20- 20,000 Hz
15. Signal-to-noise ratio: 88DB
16. Impedance: 32Ω
17. Maximum power: 100mW
Minimum power: 45mW
18. Single bare machine weight: 185g
Weight including packaging: 280g
19. Product size: 19*17*8cm
Single package size: 18.5*13*8.3cm
20. Box size: 80.5*45.5*56cm,
total number of pieces in a box: 80 pieces
Net weight: 24kg/ box
Gross weight: 27kg/ box



HOT!!!



PT3LED

1. Bluetooth version: 5.4
2. Chip type: Zhongke Lanxun (Model: 5605B)
3. Battery type: Polymer lithium battery
4. Functions: Bluetooth, AUX(3.5mm round hole), card (TF), FM
5. Battery capacity: 200 mah with protection board
6. Charging time: About 2 hours
7. Usage duration: Approximately 6 to 8 hours
8. Standby time: approximately 120 hours
9. Speaker: 40mm large dynamic driver
10. Charging port: Type-C
11. Transmission distance: Seamless connection within 10 m.
12. Transmission power: 5V1A
13. Speaker sensitivity :113+3dB
14. Frequency range: 20- 20,000 Hz
15. Signal-to-noise ratio: 88DB
16. Impedance value :32Ω
17. Maximum power: 100mW
Minimum power: 45mW
18. Single bare machine weight: 175g/0.175kg
Weight including packaging: 280g/0.28kg
19. Total number of boxes: 80pcs.
Box size: 82.5*47.5*61cm
Net weight: 28kg/ box
Gross weight: 31kg/ box
20. Packaging size: 18.5*14.4*8.7cm
Product size: 18.5*17*8cm
Folded size: 14*17*8.5cm



HOT!!!



PT5LED

1. Bluetooth version: 5.4
2. Chip type: Zhongke Lanxun (Model: 5605B)
3. Battery type: Polymer lithium battery
4. Functions: Bluetooth, AUX(3.5mm round hole), card (TF), FM
5. Battery capacity: 200 mah with protection board
6. Charging time: About 2 hours
7. Usage duration: Approximately 6 to 8 hours
8. Standby time: approximately 120 hours
9. Speaker: 40mm large dynamic driver
10. Charging port: Type-C
11. Transmission distance: Seamless connection up to 10 m.
12. Transmission power: 5V1A
13. Speaker sensitivity :113+3dB
14. Frequency range: 20- 20,000 Hz
15. Signal-to-noise ratio: 88DB
16. Impedance value: 32Ω
17. Maximum power: 100mW
Minimum power: 45mW
18. Single bare machine weight: 170g
Weight including packaging: 270g
19. Product size: 20*17*8cm
The folding size of the headphones is 17*12*7.5cm
Single package size: 18.5*13*8.4cm
20. Box size: 80.5*45.5*56cm,
total number of pieces in a box: 80 pieces
Net weight: 24kg/ box
Gross weight: 27kg/ box



1.**RS1:** Retro leather appearance, multi-functional buttons.

Seven types of sound effect switching.
Support folding. Stretch and retract.

2.**RS2:** Retro leather appearance, multi-functional buttons.

Seven types of sound effect switching.
Support folding. Stretch and retract.

3.**RS3 LED:** LED lighting effect, supporting telescopic and folding

Retro Series

Product introduction

4.**RS5:** Retro leather appearance,
multi-functional buttons.
Supports stretching and folding.





Sound of Sports

RS1

1. Bluetooth version: 5.4
2. Chip type: Zhongke Lanxun (Model: 5605B)
3. Functions: Bluetooth, AUX(3.5mm round hole), Card (TF)
4. Features: Seven sound effects can be switched freely
5. Button Instructions: (After wearing)
 1. M Key: ① Press and hold for three seconds to turn on/off/summon the voice assistant
 - ② Single press: Pause/play ③ Press twice in a row: Make a call
 - ④ Press three times in a row: Switch game mode
2. Circular Keys:
 - ① Press the middle button to switch EQ (7 sound effects)
 - ② Press left: Previous track; Press right: next track
 - ③ Press up: Volume key and press down: Volume key
6. Battery type: Polymer lithium battery
7. Battery capacity: 200 mah with protection board
8. Charging time: 2 hours
9. Usage duration: approximately 6 to 8 hours
10. Standby time: approximately 120 hours
11. Speaker: 40mm
12. Charging port: Type-C
13. Connection distance: No obstacles within 10 m.
14. Input current: 5V 1A
15. Maximum rated power: 100mW Minimum rated power: 35mW
16. Speaker sensitivity: 114db
17. Frequency range: 20- 20,000 Hz
18. Signal-to-noise ratio: 88DB
19. Impedance value: 32Ω
20. Cable length: 1m±10%
21. ① Product dimensions: 19.8*16*7cm
(The height of the headphones laid flat is 4.6cm)
- ② Packaging size: 16.9*15.1*7.9cm
- ③ Ear cup size: 7.5*7.5*2.2cm, inner diameter 3.5cm
22. Bare machine weight: 150g, including packaging weight: 230g
23. Box size: 84.5*48.5*39cm. Total number of pieces in a box: 60 pieces
Net weight: 13.5kg/ box Gross weight: 17kg/ box



NEW!!!

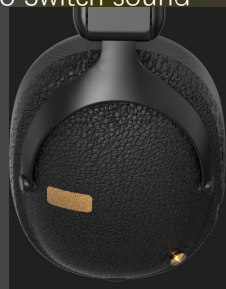




Sound of Sports

RS2

1. Bluetooth version: 5.4
2. Chip type: Zhongke Lanxun (Model: 5605B)
3. Functions: Bluetooth, AUX(3.5mm round hole), Card (TF)
4. Features: Seven sound effects can be switched freely
5. Button Instructions: (After wearing)
 - .M Key: ① Single press: Switch game mode
② Long press: Switch to Bluetooth /TF mode
 - 二. Round button: ① Press and hold the middle button to turn on/off.
Press a single button to pause/play.
Press twice in a row to make a call
Press and hold for three seconds to summon the voice assistant
 - ② Press left: Previous track Press right: Next track
 - ③ Press up: Volume up
 - 三. Press down: Volume key
 - EQ Key: Single press to Switch sound effects (7 types)
6. Battery type: Polymer lithium battery
7. Battery capacity: 200 mah with protection board
8. Charging time: 2 hours
9. Usage duration: approximately 6 to 8 hours
10. Standby time: approximately 120 hours
11. Speaker: 40mm
12. Charging port: Type-C
13. Connection distance: No obstacles within 10 meters
14. Input current: 5V - 1A
15. Maximum rated power: 100mW \ nMinimum rated power: 35mW
16. Speaker sensitivity: 114db
17. Frequency range: 20- 20,000 Hz
18. Signal-to-noise ratio: 88DB
19. Impedance value: 32Ω
20. Cable length: 1m±10%
21. ① Product size: 20.5*15.5*8cm ② Packaging size: 16.9*15.1*7.9cm
22. Bare machine weight: 175g, including packaging weight: 255g
23. Box size: 84.5*48.5*39cm. Total number of pieces in a box: 60 pieces
Net weight: 15.5kg/ box Gross weight: 19kg/ box



NEW!!!



RA3LED

1. Bluetooth version: 5.4
2. Chip type: Zhongke Lanxun (Model: 5605B)
3. Functions: Bluetooth, AUX(3.5mm round hole), Card (TF)
4. Features: LED lighting effect (cannot be turned off)
5. Battery type: Polymer lithium battery
6. Battery capacity: 200 mah with protection board
7. Charging time: 2 hours
8. Usage duration: approximately 6 to 8 hours
9. Standby time: approximately 120 hours
10. Speaker: 40mm
11. Charging port: Type-C
12. Connection distance: No obstacles within 10 meters
13. Input current: 5V - 1A
14. Maximum rated power: 100mW
Minimum rated power: 35mW
15. Speaker sensitivity: 114db
16. Frequency range: 20- 20,000 Hz
17. Signal-to-noise ratio: 88DB
18. Impedance value: 32Ω
19. Cable length: 1m±10%
- 20①. Product size: 19.5*14.8*7cm
② Packaging size: 16.9*15.1*7.9cm
③ Ear cup size: 7.5*7.5*2.2cm, inner diameter 3.5cm
21. Bare machine weight: 160g,
including packaging weight: 240g
22. Box size: 84.5*48.5*39cm.
Total number of pieces in a box: 60 pieces
Net weight: 14.5kg/ box
Gross weight: 18kg/ box



NEW!!!





RS5

Sound of Sports

1. Bluetooth version: 5.4
2. Chip type: Zhongke Lanxun (Model: 5605B)
3. Functions: Bluetooth, AUX(3.5mm round hole), card insertion (TF), FM
4. Button Instructions: (After wearing)
 - ① Press and hold for 3 seconds in the middle: Turn on/off.
Press twice in a row: Summon the language assistant
 - ② Dial up: Long press: Increase volume; Single press: Next track
 - ③ Pull down: Long press: Volume down; Single press: previous track
 - ④ Dial left: Single press: Pause/play; Long press: Reject the call
Press twice in a row: Make a call
 - ⑤ Dial right: Switch to Bluetooth /FM mode
5. Battery type: Polymer lithium battery
6. Battery capacity: 200 mah with protection board
7. Charging time: 2 hours
8. Usage duration: Approximately 6 to 8 hours
9. Standby time: Approximately 120 hours
10. Speaker: 40mm
11. Charging port: Type-C
12. Connection distance: No obstacles within 10 m.
13. Input current: 5V1A
14. Maximum rated power: 100mW; Minimum rated power: 30mW
15. Speaker sensitivity: 105±3db
16. Sound frequency range: 20-20 KHZ
17. Microphone sensitivity: -58±3db
18. Signal-to-noise ratio: 88DB
19. Impedance value: 32Ω
20. Cable length: 1.2m±10%
- 21.① Product dimensions: 19*17*8cm
(Side height of the headphones laid flat: 4.2cm)
 - ② Folding size: 19*18*4.5cm
 - ③ Packaging size: 15.4*15.3*7.4cm
22. Bare machine weight: 180g; Packaged weight: 275g
23. Box size: 71*51*42.5cm; Number of boxes: 60 pieces
Net weight: 16.5kg/ box Gross weight: 19.5kg/ box



NEW!!!



1.PF1: Three-dimensional cotton fully wrapped ear cups, supporting folding. Stretch and contract, flip. Multi-functional knob buttons.

2.PF1max: Fully wrapped ear cups with three-dimensional cotton, supporting folding Stretch and contract, flip. Multi-functional knob buttons.

3.PF2: the appearance of the patch. Cloth magnetic earmuff, mesh head bow, Knob button. Supports scaling and flipping

4.PF3: Three-dimensional cotton ear cups, thick cotton headband. Supports stretching, folding and **flipping**.

PF Series

Product introduction

5.PF5: Covered appearance, three-dimensional cotton ear cups. Support scalability. Flip.

6.PF6: leather head bow, ordinary cotton earmuffs. Supports scaling. Flip





PF1

Sound of Sports

1. Bluetooth version: V5.4
2. Chip type: Zhongke Lanxun (Model: 5605B)
3. Battery type: Polymer lithium battery
4. Functions: Bluetooth, AUX(3.5mm round hole), card (TF), FM (Press and hold two keys simultaneously to switch the FM function.)
5. Keys: ① Left circular knob key: Single press: Pause/Play
Adjust the volume: Rotate counterclockwise (lower)
Rotate clockwise (raise)
Press twice in a row: Press the next song
three times in a row: Press the previous song
② Right button: On/off
6. Battery capacity: 350 mah with protection board
7. Charging time: About 2 hours
8. Usage duration: Approximately 10 to 12 hours
9. Standby time: approximately 150 hours
10. Speaker: 40mm large dynamic driver
11. Charging port: Type-C
12. Transmission distance: Seamless connection within 10 m.
13. Transmission power: 5V1A
14. Speaker sensitivity :113+3dB
15. Frequency range: 20- 20,000 Hz
16. Signal-to-noise ratio: 88DB
17. Impedance value :32Ω
18. Single bare machine weight: 200g,
including packaging weight: 435g
19. Product size: 20.5*17*8.5
(Rear side dimensions of the headphones when laid flat: 4cm)
Packaging size: 21*21*5.9cm
20. Box size: 68*64*47cm,
total number of pieces in a box: 60 pieces
Net weight: 33kg/ box Gross weight: 36.8kg/ box



HOT!!!





PF1max

Sound of Sports

1. Bluetooth version: V5.4
2. Chip type: Zhongke Lanxun (Model: 5605B)
3. Battery type: Polymer lithium battery
4. Functions: Bluetooth, AUX(3.5mm round hole), card (TF), FM (Press and hold two keys simultaneously to switch the FM function.)
5. Keys: ① Left circular knob key: Single press: Pause/Play
Adjust the volume: Rotate counterclockwise (lower)
Rotate clockwise (raise)

Press twice in a row: Press the next song
three times in a row: Press the previous song

- ② Right button: On/off
6. Battery capacity: 350 mah with protection board
7. Charging time: About 2 hours
8. Usage duration: Approximately 10 to 12 hours
9. Standby time: approximately 150 hours
10. Speaker: 40mm large dynamic driver
11. Charging port: Type-C
12. Transmission distance: Seamless connection within 10 m.
13. Transmission power: 5V1A
14. Speaker sensitivity :113+3dB
15. Frequency range: 20- 20,000 Hz
16. Signal-to-noise ratio: 88DB
17. Impedance value :32Ω
18. Single bare machine weight: 200g,
including packaging weight: 435g
19. Product size: 20.5*17*8.5
(Rear side dimensions of the headphones when laid flat: 4cm)
Packaging size: 21*21*5.9cm
20. Box size: 68*64*47cm,
total number of pieces in a box: 60 pieces
Net weight: 33kg/ box Gross weight: 36.8kg/ box



HOT!!!



1. Bluetooth version: 5.4
2. Chip type: Zhongke Lanxun (5605B)
3. Battery type: Lithium Polymer
4. Function: supports Bluetooth
5. Features: removable magnetic earmuff mesh head bow knob button
6. Key operation: (The key is on the right)
 - ① round knob key: Single Press: pause/play
Rotate to adjust the volume: rotate counterclockwise (lower)
rotate clockwise (higher)
 - Press twice: next song, press three times: Last Song
 - ② Square button: Single Press: on/off
Press 2 times in succession: replay the ending number
7. Battery capacity: 400mAh
8. Charging time: 2 hours
9. Usage duration: about 12 hours
10. Standby time: about 150 hours
11. Horn type: 40mm steel magnetic horn
12. Charging port: Type-C
- 13.12. Transmission distance: accessible within 10 m
13. Charging voltage: 5V1A
14. Horn sensitivity: 114db
15. Frequency response range: 20-20000Hz
16. Transmission frequency: 2.4-2.48GHz
17. Output rated power: 45MW
18. Maximum power: 100MW
19. Snr: 88DB
20. Impedance value: 32Ω
21. Product Size: 19.8*17.8*8.5cm (earphone tile side height 4cm)
Packing size: 24*23.7*6.5cm
22. ① bare metal weight: 285g ② blister weight: 40g
 ③ weight of accessories: 15g ④ weight of earmuff: 30g
 ⑤ packing weight: 285g ⑥ whole set weight: 625g
23. Box gauge: 71*51 * 57cm total number of boxes: 40PCs
 Net Weight: 28kg/box Gross weight: 30.5kg/box

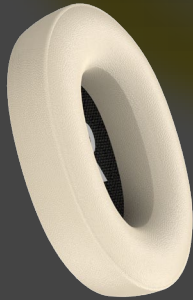


NEW!!!



PF3

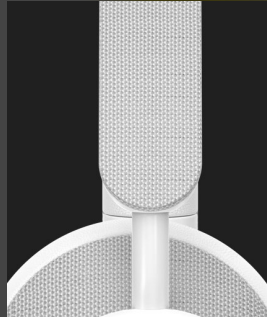
1. Bluetooth version: 5.4
2. Chip type: Zhongke Lanxun (Model: 5605B)
3. Battery type: Polymer lithium battery
4. Functions: Bluetooth, AUX(3.5mm round hole), card (TF), FM
5. Battery capacity: 350 mah with protection board
6. Charging time: About 2 hours
7. Usage duration: Approximately 10 to 12 hours
8. Standby time: approximately 150 hours
9. Speaker: 40mm large dynamic driver
10. Charging port: Type-C
11. Transmission distance: Seamless connection within 10 m.
12. Transmission power: 5V1A
13. Speaker sensitivity :113+3dB
14. Frequency range: 20- 20,000 Hz
15. Signal-to-noise ratio: 88DB
16. Impedance value :32Ω
17. Single bare machine weight: 185g
Weight including packaging: 305g
18. Product size: 21*16.5*9cm
The size of the packaging box is 18.5*21*6cm
19. Box size: 70*40*69cm,
total number of pieces in a box: 60 pieces
Net weight: 19.2kg per box. Gross weight: 22.2kg per box



HOT!!!



1. Bluetooth model: P8560
2. Bluetooth version: 5.4
3. Chip type: Jierui (Model: 6955F)
4. Battery type: Polymer lithium battery
5. Functions: Bluetooth, AUX(3.5mm round hole), FM, TF card
6. Battery capacity: 400 mah with protection board
7. Charging time: About 2 hours
8. Usage duration: approximately 15 hours
9. Standby time: approximately 150 hours
10. Speaker: 40mm
11. Charging port: Type-C
12. Transmission distance: Seamless connection within 10 m
13. Transmission power: 5V1A
14. Speaker sensitivity :114dB
15. Frequency range: 20- 20,000 Hz
16. Signal-to-noise ratio: 88DB
17. Impedance value :32Ω
18. Cable length: 1m+10%
19. Bare machine weight: 190g,
vacuum forming weight: 35g
Weight including packaging: 500g
20. Product size: 21*17.5*8cm
(Height of the headphones laid flat on the side: 4.8cm)
Packaging size: 24*19.6*6.2cm
21. Box size: 70*49*60cm,
total number of pieces in a box: 60pcs
Net weight: 25.5kg/ box
Gross weight: 28.5kg/ box



HOT!!!



1. Bluetooth version: 5.4
2. Chip type: Zhongke Lanxun (Model: 5605B)
3. Battery type: Polymer lithium battery
4. Functions: Bluetooth, AUX(3.5mm round hole), card(TF), FM (Activate the FM function by simultaneously holding down the + and - volume keys.)
5. Battery capacity: 350 mah with protection board
6. Charging time: About 2 hours
7. Usage duration: Approximately 10 to 12 hours
8. Standby time: approximately 150 hours
9. Speaker: 40mm large dynamic driver
10. Charging port: Type-C
11. Transmission distance: Seamless connection within 10 m.
12. Transmission power: 5V1A
13. Speaker sensitivity :113+3dB
14. Frequency range: 20- 20,000 Hz
15. Signal-to-noise ratio: 88DB
16. Impedance value :32Ω
17. Bare machine weight: 170g,
including packaging weight: 260g
18. Product size: 19.5*17*8cm
(Height of the side after the headphones are laid flat: 3.8cm)
Packaging size: 21*21*4.6cm
19. Box size: 92*47*52.cm
Total number of boxes: 80 pieces
Net weight: 21kg/ box Gross weight: 23.5kg/ box



HOT!!!



1.VJ1: Three-dimensional cotton full-ear cups,
supporting folding and stretching.Flip.
Multi-functional knob buttons.

2.VJ2: Compact design, protein skin ear cups.
A button Operate all functions.
Support stretching and flipping.

3.VJ3: Compact design, protein skin ear cups.
A button Operate all functions.
Support stretching and flipping.

4.VJ5: Cloth ear cups, mesh head arch.
Multi-functional knob buttons.
Support stretching and flipping.

5.VJ6: Retro appearance, spray-painted appearance,
three-dimensional cotton fully wrapped ear cups
Supports stretching, folding and flipping.

6.VJ7: Retro appearance, spray-painted appearance,
three-dimensional cotton fully wrapped ear cups
Support stretching and flipping.

VJ Series

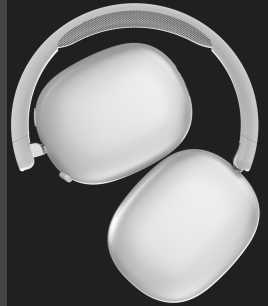
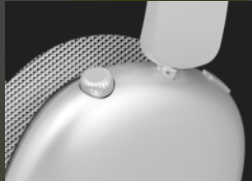
Product introduction

7.VJ8: Three sound effects can be switched, with
full-ear cups made of three-dimensional
cotton. Supports stretching, folding
and flipping.

8.VJ9: Three sound effects can be switched, with
full-ear cups made of three-dimensional
cotton.Supports stretching, folding and
flipping.



1. Bluetooth version: 5.4
2. Chip type: Zhongke Lanxun (Model: 5605B)
3. Battery type: Polymer lithium battery
4. Functions: Bluetooth, AUX(3.5mm round hole), card (TF), FM (Activate the FM function by simultaneously holding down the + and - volume keys.)
5. Battery capacity: 200 mah with protection board
6. Charging time: About 2 hours
7. Usage duration: Approximately 6 to 8 hours
8. Standby time: approximately 120 hours
9. Speaker: 40mm large dynamic driver
10. Charging port: Type-C
11. Transmission distance: Seamless connection within 10 m.
12. Transmission power: 5V1A
13. Speaker sensitivity :114db
14. Frequency range: 20- 20,000 Hz
15. Signal-to-noise ratio: 88DB
16. Impedance value :32Ω
17. Maximum power: 100mW
Minimum power: 45mW
18. Product size: 21*16.4*8.5cm
The height of the headphones laid flat on the side is 4.2cm.
Folded dimensions: 16.8*19.5*5cm
Packaging size: 20.8*20*5.2cm
19. Bare machine weight: 180g Vacuum forming weight: 30g
Weight including packaging: 295g
20. Box dimensions: 67.5*46.5*64cm Full box quantity: 60pcs
Net weight: 18kg/ box Gross weight: 20kg/ box



NEW!!!



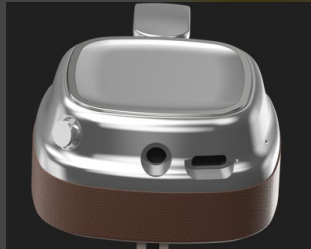
1. Bluetooth version: V5.4
2. Chip type: Zhongke Lanxun (5605B)
3. Function: Supports Bluetooth, FM (press down)
4. Button Instructions: (Up, down, left and right directions after wearing)
 - ① Press and hold for 3 seconds in the middle: on/off
 - ② Press single to the left: Previous song
Long press: Lower the volume
 - ③ Press single to the right: Next track . Long press: Turn up the volume
 - ④ Press down: Switch the recording mode
 - ⑤ Press upwards single: Play/Pause
Press up twice in a row: Replay the last digit
5. Battery type: Polymer lithium battery
6. Battery capacity: 300mah with protection board
7. Charging time: About 2 hours
8. Usage duration: Approximately 10 hours
9. Standby time: approximately 150 hours
10. Speaker: 40mm steel magnetic speaker
11. Charging port: Type-C
12. Transmission distance: Seamless connection within 10 meters
13. Input voltage: DC 5V
14. Input current: 250mA
15. Output power: 35mW
16. Speaker sensitivity: 114db
17. Frequency range: 20- 20,000 Hz
18. Signal-to-noise ratio: 88DB
19. ① Product dimensions: 18*14.2*6cm
(4cm on the side when the headphones are laid flat)
 - ② Packaging size: 19.9*16.3*4.8cm
 - ③ Ear cup diameter: 6cm ④ Outer shell headset: 5.2cm
20. ① Bare machine weight: 95g ② Vacuum forming weight: 25g
③ Accessory weight: 20g ④ Including packaging: 200g
21. Box dimensions: 71.5*45.5*57.5cm Full box quantity: 80pcs
Net weight: 16kg/ box Gross weight: 18.7kg/ box



HOT!!!



1. Bluetooth version: V5.4
2. Chip type: Zhongke Lanxun (5605B)
3. Function: Supports Bluetooth, plug in, FM (press down)
4. Button Instructions: (Up, down, left and right directions after wearing)
 - ① Press and hold for 3 seconds in the middle: on/off
 - ② Press single to the left: Previous song. Long press: Lower the volume
 - ③ Press single to the right: Next track. Long press: Turn up the volume
 - ④ Press down: Switch the recording mode
 - ⑤ Press upwards single: Play/Pause
 Press up twice in a row: Replay the last digit
5. Battery type: Polymer lithium battery
6. Battery capacity: 300mah with protection board
7. Charging time: About 2 hours
8. Usage duration: Approximately 10 hours
9. Standby time: approximately 150 hours
10. Speaker: 40mm steel magnetic speaker
11. Charging port: Type-C
12. Transmission distance: Seamless connection within 10 meters
13. Input voltage: DC 5V
14. Input current: 250mA
15. Output power: 35mW
16. Speaker sensitivity: 114db
17. Frequency range: 20- 20,000 Hz
18. Signal-to-noise ratio: 88DB
19. ① Product dimensions: 18*14.3*7cm
 (The side height of the headphones when laid flat is 4cm)
 - ② Packaging size: 19.9*16.3*4.8cm
 - ③ Outer dimensions of the ear cups: 7*7*2cm
 Inner dimensions: 3.9*3.9*1cm. Earphone shell: 6.3cm
20. ① Bare machine weight: 120g ② Vacuum forming weight: 25g
 - ③ Accessory weight: 20g ④ Including packaging: 225g
21. Box size: 71.5*45.5*57.5cm. Total number of pieces in a box: 80pcs
 Net weight: 18kg/ box Gross weight: 20.7kg/ box



NEW!!!





VJ5

Sound of Sports

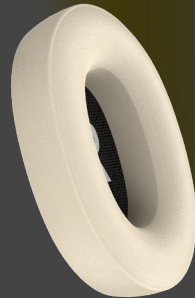
1. Bluetooth version: V5.4
2. Chip type: Zhongke Lanxun (5605B)
3. Battery type: Polymer lithium battery
4. Functions: Bluetooth, AUX(3.5mm round hole), card (TF), FM (Press and hold two keys simultaneously to switch the FM function.)
5. Keys: ① Left circular knob key: Single press: Pause/Play
Rotate to adjust the volume: Rotate counterclockwise (lower)
Rotate clockwise (raise) Press twice in a row: Next track
Press three times in a row: Previous piece
- ② Right button: On/off
6. Battery capacity: 350 mah with protection board
7. Charging time: About 2 hours
8. Usage duration: Approximately 10 to 12 hours
9. Standby time: approximately 150 hours
10. Speaker type: 40mm four-hole steel magnetic speaker
11. Charging port: Type-C
12. Transmission distance: Seamless connection within 10 meters
13. Charging voltage: 5V1A
14. Speaker sensitivity: 114db
15. Frequency response range: 20- 20,000 Hz
16. Transmission frequency: 2.4-2.48GHz
17. Rated output power: 45mw
18. Maximum power: 100mW
19. Signal-to-noise ratio: 88DB
20. Impedance value: 32Ω
21. Single bare machine weight: 175g,
vacuum forming weight: 40g, including packaging weight: 310g
22. Product dimensions: 20.5*17.5*8.5cm
(4cm on the side when the headphones are laid flat)
Packaging size: 21*20*5.7cm
23. Box size: 68*64*47cm Full box quantity: 60pcs
Net weight: 18.6kg per box. Gross weight: 22kg per box



HOT!!!



1. Bluetooth version: 5.4
2. Chip type: Zhongke Lanxun (Model: 5605B)
3. Battery type: Polymer lithium battery
4. Functions: Bluetooth, AUX(3.5mm round hole), FM
5. Battery capacity: 350 mah with protection board
6. Charging time: About 2 hours
7. Usage duration: Approximately 10 to 12 hours
8. Standby time: approximately 150 hours
9. Speaker: 40mm large dynamic driver
10. Charging port: Type-C
11. Transmission distance: Seamless connection within 10 m.
12. Transmission power: 5V1A
13. Speaker sensitivity :113+3dB
14. Frequency range: 20- 20,000 Hz
15. Signal-to-noise ratio: 88DB
16. Impedance value :32Ω
17. Single bare machine weight: 185g
Weight including packaging: 305g
18. Product size: 21*16.5*9cm
The folding size of the headphones is 14*16*9cm
The size of the packaging box is 18.5*21*6cm
19. Box size: 70*40*69cm,
total number of pieces in a box: 60 pieces
Net weight: 19.2kg per box.
Gross weight: 22.2kg per box

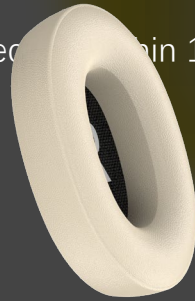


HOT!!!



VJ7

1. Bluetooth version: 5.4
2. Chip type: Zhongke Lanxun (Model: 5605B)
3. Battery type: Polymer lithium battery
4. Functions: Bluetooth, AUX(3.5mm round hole), card (TF), FM
5. Battery capacity: 350 mah with protection board
6. Charging time: About 2 hours
7. Usage duration: Approximately 10 to 12 hours
8. Standby time: approximately 150 hours
9. Speaker: 40mm large dynamic driver
10. Charging port: Type-C
11. Transmission distance: Seamless connection within 10 m.
12. Transmission power: 5V1A
13. Speaker sensitivity :113+3dB
14. Frequency range: 20- 20,000 Hz
15. Signal-to-noise ratio: 88DB
16. Impedance value :32Ω
17. Single bare machine weight: 185g
Weight including packaging: 305g
18. Product size: 21*16.5*9cm
The size of the packaging box is 18.5*21*6cm
19. Box size: 70*40*69cm,
Total number of pieces in a box: 60 pieces
Net weight: 19.2kg per box.
Gross weight: 22.2kg per box

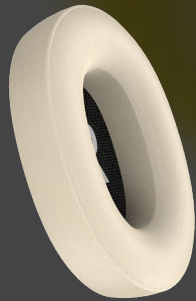


HOT!!!



VJ8

1. Bluetooth version: 5.4
2. Chip type: Zhongke Lanxun (Model: 5605B)
3. Battery type: Polymer lithium battery
4. Functions: Bluetooth, AUX(3.5mm round hole), FM
5. Features: There are three types of sound effects that can be switched in Bluetooth mode.
6. Battery capacity: 350 mah with protection board
7. Charging time: About 2 hours
8. Usage duration: Approximately 10 to 12 hours
9. Standby time: approximately 150 hours
10. Speaker: 40mm large dynamic driver
11. Charging port: Type-C
12. Transmission distance: Seamless connection within 10 m.
13. Transmission power: 5V1A
14. Speaker sensitivity :113+3dB
15. Frequency range: 20- 20,000 Hz
16. Signal-to-noise ratio: 88DB
17. Impedance value :32Ω
18. Single bare machine weight: 190g
Weight including packaging: 345g
19. Product size: 20*15.2*8.5cm
(Laid flat with a side height of 5cm)
Packaging size: 21*20*6.4cm
20. Box size: 69.5*41*46cm.
Number of boxes: 40pcs
Net weight: 20kg/ box
Gross weight: 23kg/ box

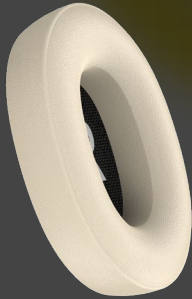


HOT!!!



VJ9

1. Bluetooth version: 5.4
2. Chip type: Zhongke Lanxun (Model: 5605B)
3. Battery type: Polymer lithium battery
4. Functions: Bluetooth, AUX(3.5mm round hole), card (TF), FM
5. Features: There are three types of sound effects that can be switched in Bluetooth mode
6. Battery capacity: 350 mah with protection board
7. Charging time: About 2 hours
8. Usage duration: Approximately 10 to 12 hours
9. Standby time: approximately 150 hours
10. Speaker: 40mm large dynamic driver
11. Charging port: Type-C
12. Transmission distance: Seamless connection within 10 m
13. Transmission power: 5V1A
14. Speaker sensitivity :113+3dB
15. Frequency range: 20- 20,000 Hz
16. Signal-to-noise ratio: 88DB
17. Impedance value :32Ω
18. Single bare machine weight: 190g
Weight including packaging: 345g
19. Product size: 20*15.2*8.5cm
(Laid flat with a side height of 5cm)
Packaging size: 21*20*6.4cm
20. Box size: 69.5*41*46cm.
Number of boxes: 40pcs
Net weight: 20kg/ box
Gross weight: 23kg/ box



HOT!!!



1. **PN1:** Fully wrapped ear cups with three-dimensional cotton, supporting folding. Stretch and contract, flip.
2. **PN2:** Fully wrapped ear cups made of three-dimensional cotton, with LED lights that can be turned off or on. Supports folding, stretching and flipping.
3. **PN3:** Three-dimensional cotton full-ear cups, supporting extension, folding and flipping.

PN Series

Product introduction

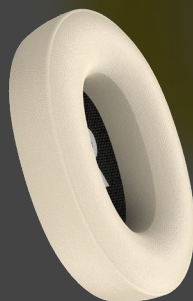
4. **PN5:** Three-dimensional cotton fully wrapped ear cups, supporting telescopic extension Fold, flip.



PN1

Three-dimensional
cotton

1. Bluetooth version: 5.4
2. Chip type: Zhongke Lanxun (Model: 5605B)
3. Battery type: Polymer lithium battery
4. Functions: Bluetooth, AUX(3.5mm round hole), card (TF), FM
5. Battery capacity: 200 mah with protection board
6. Charging time: About 2 hours
7. Usage duration: Approximately 6 to 8 hours
8. Standby time: approximately 120 hours
9. Speaker: 40mm large dynamic driver
10. Charging port: Type-C
11. Transmission distance: Seamless connection within 10 m.
12. Transmission power: 5V1A
13. Speaker sensitivity :113+3dB
14. Frequency range: 20- 20,000 Hz
15. Signal-to-noise ratio: 88DB
16. Impedance value :32Ω
17. Single bare machine weight: 155g,
including packaging weight: 275g
18. Total number of boxes: 60pcs.
Box size: 67.5*40*69cm
Net weight: 17kg/ box
Gross weight: 20kg/ box
19. Packaging size: 21*18.4*6cm
Product size: 21*17*8.5cm
The height of the headphones laid flat on the side is 4.5cm.

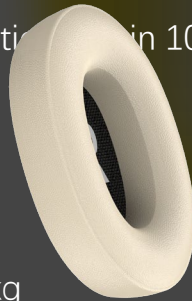


HOT!!!



PN2 RGB

1. Bluetooth version: 5.4
2. Chip type: Zhongke Lanxun (Model: 5605B)
3. Battery type: Polymer lithium battery
4. Functions: Bluetooth, AUX(3.5mm round hole), FM
5. Battery capacity: 350 mah with protection board
6. Charging time: About 2 hours
7. Usage duration: Approximately 10 to 12 hours
8. Standby time: approximately 120 hours
9. Speaker: 40mm large dynamic driver
10. Charging port: Type-C
11. Transmission distance: Seamless connection in 10 m.
12. Transmission power: 5V1A
13. Speaker sensitivity :113+3dB
14. Frequency range: 20- 20,000 Hz
15. Signal-to-noise ratio: 88DB
16. Impedance value :32Ω
17. Single bare machine weight: 180g/0.18kg
Weight including packaging: 320g/0.32kg
18. Total number of boxes: 60pcs.
Box size: 70*40*69cm
Net weight: 17kg/ box
Gross weight: 20kg/ box
19. Packaging size :21*18.4*6cm
Product size :21*17*8.5cm
(The side height after laying flat is 4.5cm)

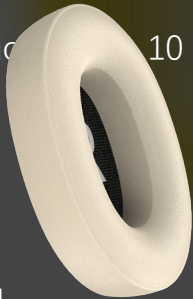


HOT!!!



PN3

1. Bluetooth version: 5.4
2. Chip type: Zhongke Lanxun (Model: 5605B)
3. Battery type: Polymer lithium battery
4. Functions: Bluetooth, AUX(3.5mm round hole), card (TF), FM
5. Battery capacity: 200 mah with protection board
6. Charging time: About 2 hours
7. Usage duration: Approximately 6 to 8 hours
8. Standby time: approximately 120 hours
9. Speaker: 40mm large dynamic driver
10. Charging port: Type-C
11. Transmission distance: Seamless connection 10 m.
12. Transmission power: 5V1A
13. Speaker sensitivity :113+3dB
14. Frequency range: 20- 20,000 Hz
15. Signal-to-noise ratio: 88DB
16. Impedance value :32Ω
17. Single bare machine weight: 180g/0.18kg
Weight including packaging: 305g/0.305kg
18. Total number of boxes: 60pcs.
Box size: 70*40*69cm
Net weight: 17kg/ box
Gross weight: 20kg/ box
19. Packaging size :21*18.4*6cm
Product size :21*17*8.5cm
(The side height after laying flat is 4.5cm)

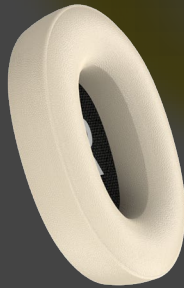


HOT!!!



PN5

1. Bluetooth version: 5.4
2. Chip type: Zhongke Lanxun (Model: 5605B)
3. Battery type: Polymer lithium battery
4. Functions: Bluetooth, AUX(3.5mm round hole), FM
5. Battery capacity: 200 mah with protection board
6. Charging time: About 2 hours
7. Usage duration: Approximately 6 to 8 hours
8. Standby time: approximately 120 hours
9. Speaker: 40mm large dynamic driver
10. Charging port: Type-C
11. Transmission distance: Seamless connection within 10 m.
12. Transmission power: 5V1A
13. Speaker sensitivity :113+3dB
14. Frequency range: 20- 20,000 Hz
15. Signal-to-noise ratio: 88DB
16. Impedance value :32Ω
17. Single bare machine weight: 190g,
including packaging weight: 305g
18. Total number of boxes: 60pcs. Box size: 70*40*69cm
Net weight: 17kg/ box Gross weight: 20kg/ box
19. Packaging size :21*18.4*6cm
Product size :21*17*8.5cm
(The side height after laying flat is 4.5cm)



HOT!!!



Product introduction

PM Series

1..PM1: Three-dimensional cotton ear cups.

Support stretching and flipping.

2.PM2: Gold-plated headphone.

Three-dimensional cotton ear muffs.

Support stretching and flipping.

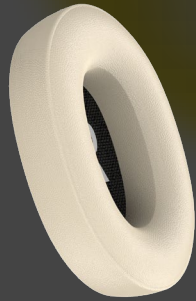
3.PM3: Three-dimensional cotton ear cups.

Support stretching and flipping.



PM1

1. Bluetooth version: 5.4
2. Chip type: Zhongke Lanxun (Model: 5605B)
3. Battery type: Polymer lithium battery
4. Functions: Bluetooth, AUX(3.5mm round hole), card (TF), FM
5. Battery capacity: 200 mah with protection board
6. Charging time: About 2 hours
7. Usage duration: Approximately 6 to 8 hours
8. Standby time: approximately 120 hours
9. Speaker: 40mm large dynamic driver
10. Charging port: Type-C
11. Transmission distance: Seamless connection within 10 m
12. Transmission power: 5V1A
13. Speaker sensitivity :113+3dB
14. Frequency range: 20- 20,000 Hz
15. Signal-to-noise ratio: 88DB
16. Impedance value :32Ω
17. Single bare machine weight: 170g
Weight including packaging: 284.5g
18. Total number of boxes: 60pcs.
Box size: 70*40*69cm
Net weight: 19.2kg/ box
Gross weight: 22.2kg/ box
19. Packaging size :21*18.4*6cm
Product size :20.5*19.5*4cm
(The side height after laying flat is 4.5cm)

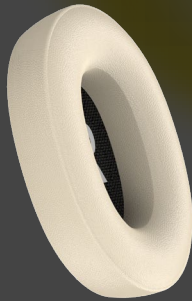


HOT!!!



PM2

1. Bluetooth version: 5.4
2. Chip type: Zhongke Lanxun (Model: 5605B)
3. Battery type: Polymer lithium battery
4. Functions: Bluetooth, AUX(3.5mm round hole), card (TF), FM
5. Battery capacity: 200 mah with protection board
6. Charging time: About 2 hours
7. Usage duration: Approximately 6 to 8 hours
8. Standby time: approximately 120 hours
9. Speaker: 40mm large dynamic driver
10. Charging port: Type-C
11. Transmission distance: Seamless connection within 10 m
12. Transmission power: 5V1A
13. Speaker sensitivity :113+3dB
14. Frequency range: 20- 20,000 Hz
15. Signal-to-noise ratio: 88DB
16. Impedance value :32Ω
17. Single bare machine weight: 170g
Weight including packaging: 284.5g
18. Total number of boxes: 60pcs.
Box size: 70*40*69cm
Net weight: 19.2kg/ box
Gross weight: 22.2kg/ box
19. Packaging size :21*18.4*6cm
Product size :20.5*19.5*4cm
(The side height after laying flat is 4.5cm)

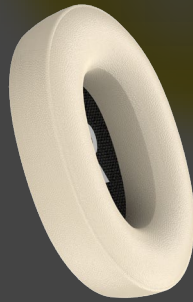


HOT!!!



PM3

1. Bluetooth version: 5.4
2. Chip type: Zhongke Lanxun (Model: 5605B)
3. Battery type: Polymer lithium battery
4. Functions: Bluetooth, AUX(3.5mm round hole), card insertion, FM
5. Battery capacity: 200 mah with protection board
6. Charging time: About 2 hours
7. Usage duration: Approximately 6 to 8 hours
8. Standby time: approximately 120 hours
9. Speaker: 40mm large dynamic driver
10. Charging port: Type-C
11. Transmission distance: Seamless connection within 10 m
12. Transmission power: 5V1A
13. Speaker sensitivity :113+3dB
14. Frequency range: 20- 20,000 Hz
15. Signal-to-noise ratio: 88DB
16. Impedance value :32Ω
17. Single bare machine weight: 135g, including packaging weight: 245g
18. Product size: 21.5*15.5*8 (Flat height 5cm)
Packaging size: 21*18.5*5.8cm
19. Box size: 70*40*69cm,
total number of pieces in a box: 60 pieces
Net weight: 19.2kg/ box
Gross weight: 22.2kg/ box



HOT!!!



1. **SN1:** Three-dimensional cotton ear cups, woven fabric head bow. Support stretching and flipping.
2. **SN2:** Three-dimensional cotton ear cups, woven fabric head arch, supporting extension and retraction. Fold, flip.
3. **SN3:** Three-dimensional cotton ear cups, LED lights can be turned on/off. Supports stretching, folding and flipping.

SN Series

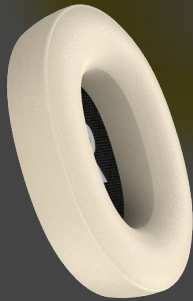
Product introduction

4. **SN5:** Three-dimensional cotton ear cups. Support stretching and flipping.
5. **SN6:** Three-dimensional cotton ear cups. Supports stretching and folding.



SN1

1. Bluetooth version: 5.4
2. Chip type: Zhongke Lanxun (Model: 5605B)
3. Battery type: Polymer lithium battery
4. Functions: Bluetooth, AUX(3.5mm round hole), card (TF), FM
5. Battery capacity: 200 mah with protection board
6. Charging time: About 2 hours
7. Usage duration: Approximately 6 to 8 hours
8. Standby time: approximately 120 hours
9. Speaker: 40mm large dynamic driver
10. Charging port: Type-C
11. Transmission distance: Seamless connection within 10 m.
12. Transmission power: 5V1A
13. Speaker sensitivity :113+3dB
14. Frequency range: 20- 20,000 Hz
15. Signal-to-noise ratio: 88DB
16. Impedance value :32Ω
17. Single bare machine weight: 200g/0.2kg
Weight including packaging: 300g/0.3kg
18. Packaging size: 20*18.5*8.5cm
Product size: 18*17*8cm
19. Box dimensions: 67.5*40*69cm
Full box quantity: 60pcs
Net weight: 17kg/ box
Gross weight: 20kg/ box

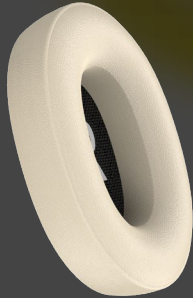


HOT!!!



SN2

1. Bluetooth version: 5.4
2. Chip type: Zhongke Lanxun (Model: 5605B)
3. Battery type: Polymer lithium battery
4. Functions: Bluetooth, AUX(3.5mm round hole), card (TF), FM
5. Battery capacity: 200 mah with protection board
6. Charging time: About 2 hours
7. Usage duration: Approximately 6 to 8 hours
8. Standby time: approximately 120 hours
9. Speaker: 40mm large dynamic driver
10. Charging port: Type-C
11. Transmission distance: Seamless connection within 10 m.
12. Transmission power: 5V1A
13. Speaker sensitivity :113+3dB
14. Frequency range: 20- 20,000 Hz
15. Signal-to-noise ratio: 88DB
16. Impedance value :32Ω
17. Single bare machine weight: 200g/0.2kg
Weight including packaging: 300g/0.3kg
18. Packaging size: 20*18.5*8.5cm
Product size: 18*17*8cm
19. Box dimensions: 67.5*40*69cm
Full box quantity: 60pcs
Net weight: 17kg/ box
Gross weight: 20kg/ box

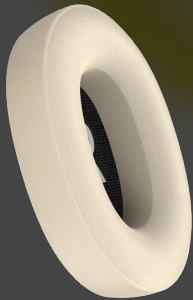


HOT!!!



SN3

1. Bluetooth version: 5.4
2. Chip type: Zhongke Lanxun (Model: 5605B)
3. Battery type: Polymer lithium battery
4. Functions: Bluetooth, AUX(3.5mm round hole), card (TF), FM
5. Battery capacity: 350 mah with protection board
6. Charging time: About 2 hours
7. Usage duration: Approximately 10 to 12 hours
8. Standby time: approximately 150 hours
9. Speaker: 40mm large dynamic driver
10. Charging port: Type-C
11. Transmission distance: Seamless connection within 10 m.
12. Transmission power: 5V1A
13. Speaker sensitivity :113+3dB
14. Frequency range: 20- 20,000 Hz
15. Signal-to-noise ratio: 88DB
16. Impedance value :32Ω
17. Single bare machine weight: 200g/0.2kg
Weight including packaging: 300g/0.3kg
18. Packaging size: 20*17*8.6cm
Product size: 19*17.5*8cm
19. Box size: 87.5*47*54.5cm.
Total number of pieces in a box: 60 pieces
Net weight: 17kg/ box
Gross weight: 20kg/ box

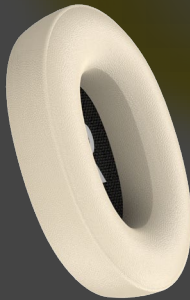


HOT!!!



SN5

1. Bluetooth version: 5.4
2. Chip type: Zhongke Lanxun (Model: 5605B)
3. Battery type: Polymer lithium battery
4. Functions: Bluetooth, AUX(3.5mm round hole), card (TF), FM
5. Battery capacity: 200 mah with protection board
6. Charging time: About 2 hours
7. Usage duration: Approximately 6 to 8 hours
8. Standby time: approximately 120 hours
9. Speaker: 40mm large dynamic driver
10. Charging port: Type-C
11. Transmission distance: Seamless connection within 10 m.
12. Transmission power: 5V1A
13. Speaker sensitivity :113+3dB
14. Frequency range: 20- 20,000 Hz
15. Signal-to-noise ratio: 88DB
16. Impedance value :32Ω
17. Single bare machine weight: 200g/0.2kg
Weight including packaging: 300g/0.3kg
18. Packaging size: 21.5*18.5*6.5cm
Product size: 20*18*8cm
19. Box dimensions: 67.5*40*69cm
Full box quantity: 60pcs
Net weight: 17kg/ box
Gross weight: 20kg/ box

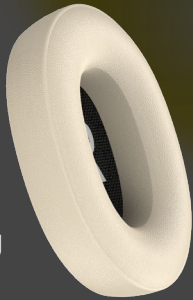


HOT!!!



SN6

1. Bluetooth version: 5.4
2. Chip type: Zhongke Lanxun (Model: 5605B)
3. Battery type: Polymer lithium battery
4. Functions: Bluetooth, AUX(3.5mm round hole), card (TF), FM
5. Battery capacity: 200 mah with protection board
6. Charging time: About 2 hours
7. Usage duration: Approximately 6 to 8 hours
8. Standby time: approximately 120 hours
9. Speaker: 40mm large dynamic driver
10. Charging port: Type-C
11. Transmission distance: Seamless connection within 10 m.
12. Transmission power: 5V1A
13. Speaker sensitivity :113+3dB
14. Frequency range: 20- 20,000 Hz
15. Signal-to-noise ratio: 88DB
16. Impedance value :32Ω
17. Single bare machine weight: 0.18kg/180g
Weight including packaging: 0.285kg/285g
18. Total number of boxes: 60pcs.
Box size: 87.5*47*54.5cm
Net weight: 17kg/ box
Gross weight: 20kg/ box
19. Packaging size: 19.8*17.8*8.8cm
Product size: 19*17*8.5cm



HOT!!!



Customize the series



Retro patchwork style

Covered appearance, metal spray-painted headsets. Three-dimensional cotton ear muffs. Support stretching and flipping.

coated and painted version

Veneering + spray painting appearance. Cloth ear cups. Curved hook design. Supports stretching and folding. Flip.

PF1 adhesiv ta-pe magnetic type

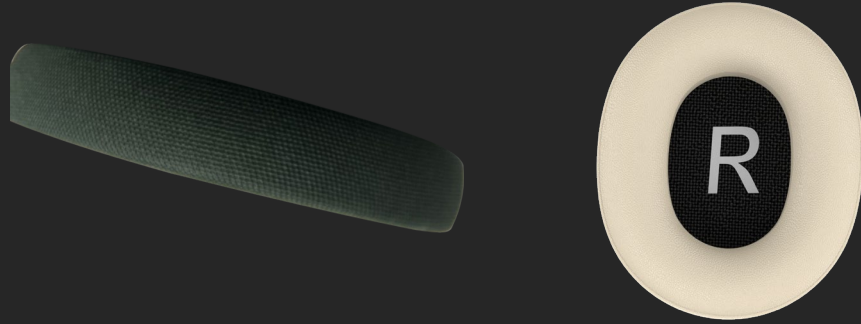
Fabric head arch, magnetic fabric ear cups. Multi-functional knob keys, supporting telescopic and flipping.

PF1 Wheat straw magnetic attraction

Veneering + wheat straw appearance. Magnetic fabric ear cups, multi-functional knob buttons. Support stretching and flipping.



Retro sticker custom version



Detail picture



Color display

1. Bluetooth model: **Bluetooth model can be changed**
2. Bluetooth version: 5.4
3. Chip type: Zhongke Lanxun (Model: 5605B)
4. Battery type: Polymer lithium battery
5. Functions: Bluetooth, AUX(3.5mm round hole), FM, TF card
6. Battery capacity: 350 mah with protection board
7. Charging time: About 2 hours
8. Usage duration: Approximately 10 to 12 hours
9. Standby time: approximately 150 hours
10. Speaker: 40mm steel magnetic speaker
11. Charging port: Type-C
12. Transmission distance: Seamless connection within 10 meters
13. Transmission power: 5V1A
14. Speaker sensitivity :114dB
15. Frequency range: 20- 20,000 Hz
16. Signal-to-noise ratio: 88DB
17. Impedance value :32Ω
18. Single bare machine weight: 190g,
including packaging weight: 310g
19. Headphone size: 19.5*17.5*8cm (5cm on the side when laid flat)
Ear cup dimensions: Outer length, width and height: 9.5*8*2cm
Inner dimensions: 5.8*4*1cm
The size of the packaging box is 18.5*21*6cm
20. Box size: 70*40*69cm, total number of pieces in a box: 60 pieces
Net weight: 19.2kg per box. Gross weight: 22.2kg per box

(Picture color mixed color (2 colors) minimum order quantity: 1000. Custom colors are supported. Single color starts from 1000.) Supports customized active noise cancellation or regular non-noise cancellation. Customized packaging, etc.

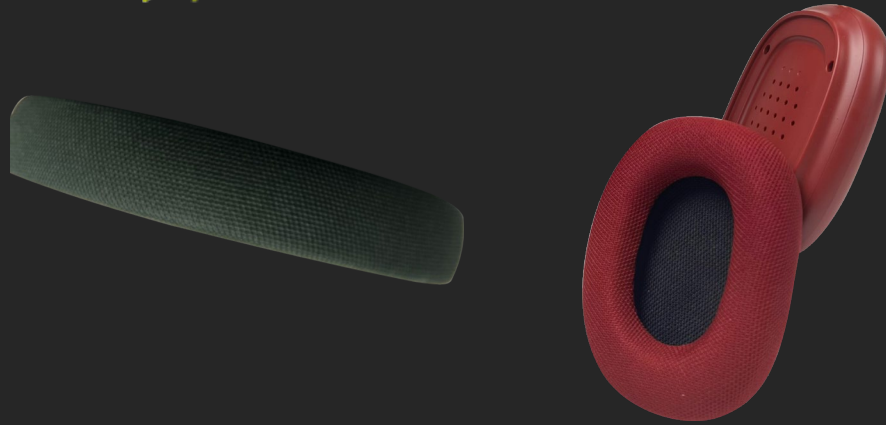


Detail picture



Color display

1. Bluetooth model: **Bluetooth model can be changed)**
 2. Bluetooth version: 5.4
 3. Chip type: Zhongke Lanxun (Model: 5605B)
 4. Battery type: Polymer lithium battery
 5. Functions: Bluetooth, AUX(3.5mm round hole), FM, TF card
 6. Battery capacity: 350 mah with protection board
 7. Charging time: About 2 hours
 8. Usage duration: Approximately 10 to 12 hours
 9. Standby time: approximately 150 hours
 10. Speaker: 40mm steel magnetic speaker
 11. Charging port: Type-C
 12. Transmission distance: Seamless connection within 10 meters
 13. Transmission power: 5V1A
 14. Speaker sensitivity :114dB
 15. Frequency range: 20- 20,000 Hz
 16. Signal-to-noise ratio: 88DB
 17. Impedance value :32Ω
 18. Single bare machine weight: 190g,
including packaging weight: 310g
 19. Headphone size: 19.5*17.5*8cm (5cm on the side when laid flat)
Ear cup dimensions: Outer length, width and height: 9.5*8*2cm
Inner dimensions: 5.8*4*1cm
The size of the packaging box is 18.5*21*6cm
 20. Box size: 70*40*69cm, total number of pieces in a box: 60 pieces
Net weight: 19.2kg per box. Gross weight: 22.2kg per box
- (Picture color mixed color (2 colors) minimum order quantity: 1000. Custom colors are supported. Single color starts from 1000.)**
Supports customized active noise cancellation or regular non-noise cancellation. Customized packaging, etc.



Detail picture



Color display

1. Bluetooth model: PF1 Magnetic tape version
(Model undetermined, can be changed)
2. Bluetooth version: 5.4
3. Chip type: Zhongke Lanxun (Model: 5605B)
4. Battery type: Polymer lithium battery
5. Functions: Bluetooth, AUX(3.5mm round hole), FM, TF card
6. **Features: The magnetic ear cups can be freely disassembled**
7. Battery capacity: 350 mah with protection board
8. Charging time: About 2 hours
9. Usage duration: Approximately 10 to 12 hours
10. Standby time: approximately 150 hours
11. Speaker: 40mm steel magnetic speaker
12. Charging port: Type-C
13. Transmission distance: Seamless connection within 10 meters
14. Transmission power: 5V1A
15. Speaker sensitivity :114dB
16. Frequency range: 20- 20,000 Hz
17. Signal-to-noise ratio: 88DB
18. Impedance value :32Ω
19. The size and weight of the product are to be determined
20. Packaging and box specifications can be customized according to customer requirements
21. **Batteries, speakers, non-noise-cancelling or active noise-cancelling can all be customized as per requirements.**

The minimum order quantity for single-color pictures is 500, and for mixed-color pictures, it is 1,000.

Support custom colors. Single color starts from 2000.

Magnetic cloth
ear cups



Detail picture

Color display

PF1Wheat Straw Magnetic Custom-Made

1. Bluetooth model: PF1 Magnetic straw type
(Model undetermined, can be changed)
2. Bluetooth version: 5.4
3. Chip type: Zhongke Lanxun (Model: 5605B)
4. Battery type: Polymer lithium battery
5. Functions: Bluetooth, AUX(3.5mm round hole), FM, TF card
6. **Features: The magnetic ear cups can be freely disassembled**
7. Battery capacity: 350 mah with protection board
8. Charging time: About 2 hours
9. Usage duration: Approximately 10 to 12 hours
10. Standby time: approximately 150 hours
11. Speaker: 40mm steel magnetic speaker
12. Charging port: Type-C
13. Transmission distance: Seamless connection within 10 meters
14. Transmission power: 5V1A
15. Speaker sensitivity :114dB
16. Frequency range: 20- 20,000 Hz
17. Signal-to-noise ratio: 88DB
18. Impedance value :32Ω
19. The size and weight of the product are to be determined
20. Packaging and box specifications can be customized according to customer requirements
21. **Batteries, speakers, non-noise-cancelling or active noise-cancelling can all be customized as per requirements.**

The minimum order quantity for single-color pictures is 500, and for mixed colors (two colors), it is 1,000.
Support customization of colors other than pictures. Single color starts from 2000.



Wireless headset &
Headset intercom

Xia Men SoundPer Electronic Technology Co., Ltd.

New products will be updated
successively in the future.....

