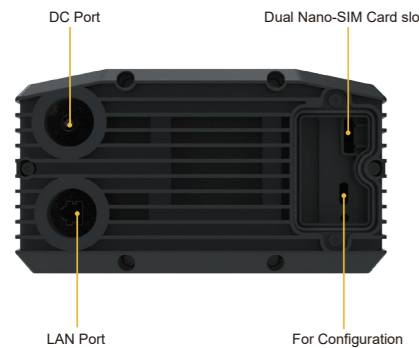


5G ODU Interface And Indicator Light Description

1. 5G ODU Interfaces Description



2. 5G ODU LED Indicator Description

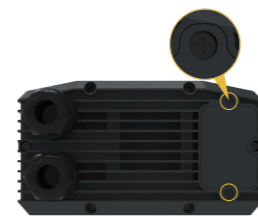


Indicator	Name	Description
	Power	1.Blue light on,Power on 2.Off,Power off
	LAN	1.Blue light blinking,Ethernet connected 2.Off,Ethernet not connect
	WiFi	1.Blue light on,WIFI on 2.Off,WIFI off
	Cellular Network	1.Blue light on,connect to 5G network 2.Yellow light on,connect to 3G/4G network 3.Off,not connect to cellular network 4.Blinking,dialing,blinking frequency 500ms/time
	Signal Strength	1.Blue light on,signal is good,the signal value RSRP>-95dBm or RSCP>-80 2.Blue light on,signal is weak,the signal value RSRP<=-95dBm or RSCP<=-80 3.Off,no signal is available or no SIM card is inserted

5G ODU Configuration Introduction

1. Set up SIM Card & Internet Access (POE Power Supply)

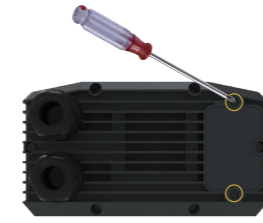
Step 1: Unscrew the two screws on the cover of the device and remove the cover.



Step 2: Insert SIM card direction shown on the SIM card interface. The left side of the card slot is the secondary card, and the right side is the main card.

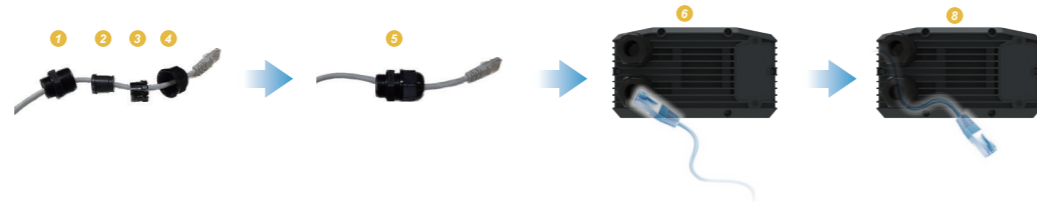


Step 3: Lock the cover plate of the equipment with screws.

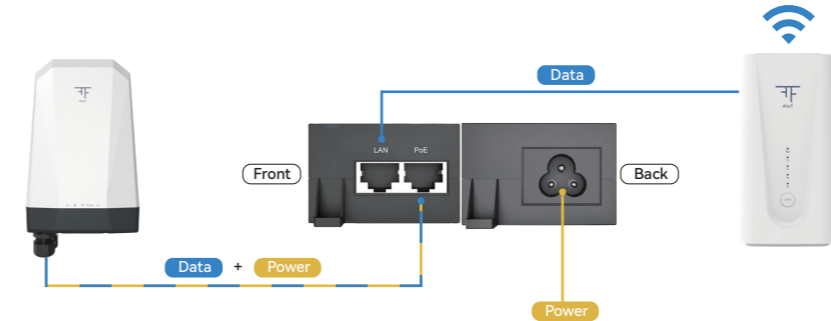


Step 4: Insert the network cable into the waterproof connector by following the steps from left to right in the picture, tighten the waterproof connector, insert the cable into the LAN port of the device, and tighten the waterproof connector with the device.

Notice: It is recommended to use a wrench to tighten, not tight may affect the waterproof performance.



Step 5: Connect the network cable to the POE port of the POE adapter, connect the POE adapter to the power supply and the 5G ODU device automatically turn on. And connect a network cable to the LAN port of the POE adapter and connect the IDU to provide a wired or wireless network for other internet devices.

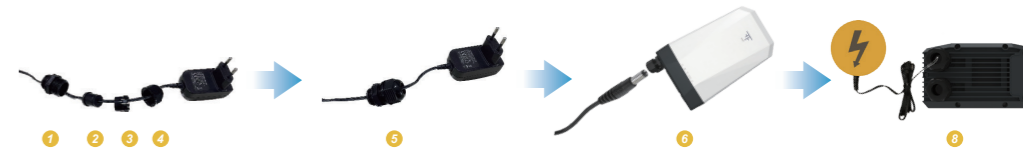


2. Set up SIM Card & Internet Access (DC Power Supply)

SIM Card Installation refer to Step 1 to Step 3 in Set up SIM Card Internet Access (POE Power Supply)

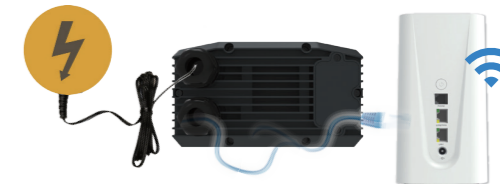
Step 4: Insert the DC power cable into the waterproof connector by following the steps from left to right in the picture, tighten the waterproof connector, insert it into the DC port, tighten the waterproof connector, and power on device.

Notice: If the DC power cable is too thin, wrap several rounds of waterproof tape around the coil to improve the waterproof performance.

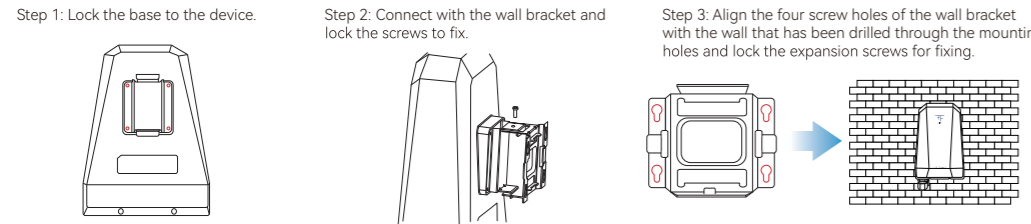
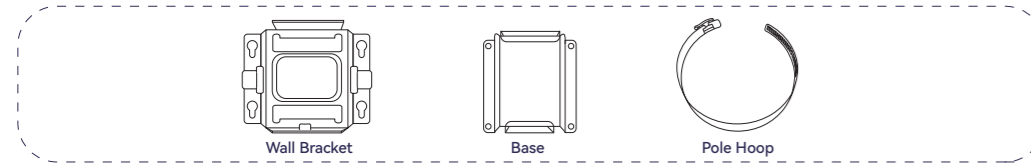


Step 5: Network cable installation refer to Step 4 in Set up SIM Card Internet Access (POE Power Supply)

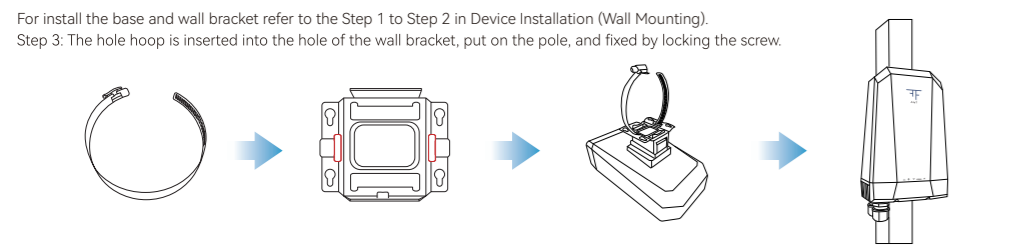
Step 6: Connect network cable to IDU to provide wired or wireless network for other network devices.



3. Device Installation (Wall-mounted)



4. Device Installation (Wall-mounted)



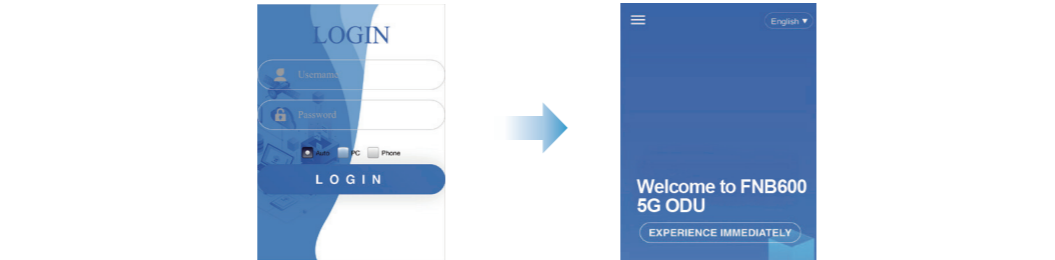
5. Device Configuration

Step 1: Power the device, the signal strength indicator is on, the dial is successful if the 5G/4G indicator is on.

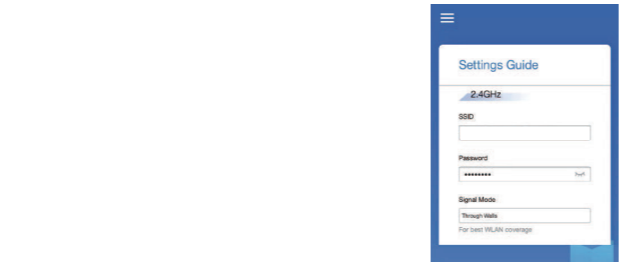
Step 2: The terminal device accesses the ODU by searching for WiFi.



Step 3: Open the browser, and the page is automatically displayed. (If no, manually enter 192.168.1.1)
 Default Account: admin
 Default Password: admin



Step 4: Setting the username and password for the WLAN.



Step 5: Set the password for logging in to the host. After the application setting is complete, the login page will be displayed. Enter the password of the new account and click login.

