

因为专业 所以放心
Specialized, So Trusted



正大机电企业总部 CP M&E Group Headquarters

地址/Add: 上海市松江区茸北工业区茸兴路 3-5号

No. 3-5, Rongxing Road, Rongbei Industrial Zone, Songjiang District, Shanghai, China

电话/Tel: 021-57780134 (正大机电企业综合办公室)

邮箱/Email: cp-me@cpgroup.cn

网址/Website: www.cpme-group.com



地址/Add: 上海市松江区 茸北工业区茸兴路29号

No.29 Rongxing Road, Rongbei Industrial Zone, Songjiang, Shanghai

电话/Tel: 4008200470

网址/Website: www.cpshty.com



饲料厂装备与工程

FEEDMILL EQUIPMENT AND ENGINEERING

做肉类食品全产业链智慧装备和数智化服务的一流供应商

First-Class Supplier of Smart Equipment and Digital Intelligent Services for the Full Industry Chain of Food Products

正大机电
CP M & E



因为专业 所以放心
Specialized, So Trusted

正大机电
CP M & E



企业概况 Company Brief



正大机电企业总部大楼
CP M&E Group Headquarters Building



养殖机械制造基地
Animal Husbandry Machinery Manufacturing Base



专用车辆、饲料机械、包材制造基地
Special Vehicle, Feed Machinery and Food Package Manufacturing Base



环模机械、食品机械及环保设备制造基地
Pellet Mill Die, Food Machinery and Environmental Protection Equipment Manufacturing Base

正大机电企业，是专注于为肉类食品产业链上各企业，提供机电装备与工程总包的企业集群。
正大机电企业，是泰国正大集团控股，由泰国、中国、美国、日本企业组成的混合制企业集群。
CP M&E Group is a cluster of enterprises dedicated to providing mechanical and electrical equipment and engineering general contracting for various enterprises in the meat food industry chain.
CP M&E Group is a mixed ownership enterprise cluster controlled by Thailand's CP Group, consisting of companies from Thailand, China, the United States, and Japan.

我们的使命Our Mission

我们为饲料厂/养殖场/食品厂提供智慧的成套装备和EPC交钥匙服务；
我们的数智化装备和服务，能够帮助用户实现经营生产的高效益；
我们致力于促进肉类食品行业向环境友好/资源节约方向快速良性发展。
We provide intelligent complete sets of equipment and EPC turnkey services for feed mill/breeding farms/food factories;
Our digital equipment and services can help users achieve high efficiency in business operations and production;
We are committed to promoting the rapid and sustainable development of the meat industry towards environmental friendliness and re-source conservation.

我们的愿景Our Vision

做肉类食品全产业链智慧装备和数智化服务的一流供应商。
First-Class Supplier of Smart Equipment and Digital Intelligent Services for the Full Industry Chain of Food Products.

正大机电企业核心价值观Core Values of CP M&E Group

三利原则（利国、利民、利企业）、快速优质、化繁为简、接受变革、不断创新、正直诚信。
Three Benefits (Benefit the country, Benefit the people, Benefit the Enterprise)
Speed and Quality, Simplification, Accept Change, Innovativeness, Integrity and Honesty.

五大产品特色 Product Features

正大机电企业提供的机电装备与工程总包业务，具备五大特色：全链路配套、技术先进、匠心制造、百年实践经验、数智化赋能。
The electromechanical equipment and engineering general contracting business provided by CP M&E Group has five major features: full-chain solutions, advanced technology, crafted with ingenuity, century-proven expertise, digital intelligence empowerment.

1. 全链路配套 Full-Chain Solutions

提供农牧食品产业链全链路机电装备与工程总包业务，具体服务于饲料厂、养猪场、养鸡场、养虾场、屠宰厂、食品加工厂、饲料运输、畜禽运输、食品运输、粪污处理、臭气处理、水处理，以及智能制造。
We provide comprehensive electromechanical equipment and turnkey engineering services for the entire agri-food industry chain, including: feed mills, pig farms, chicken farms, shrimp farms, slaughterhouses, food processing plants, feed transportation, livestock transportation, food transportation, waste treatment, odor treatment, water treatment, smart manufacturing.

2. 技术先进 Advanced Technology

引进欧美日先进机电产品技术，并结合中国及亚洲客户需求，为客户提供性价比高、寿命周期长、成本低的独有技术产品和工艺，能够给客户带来高收益。
By adopting advanced electromechanical technologies from Europe, America, and Japan, we deliver cost-effective, durable, and low-maintenance technical solutions tailored to Asian clients' needs, maximizing customer profitability.

3. 匠心制造 Crafted with Ingenuity

拥有全球领先的制造基地，匠心精神的长三角技术工人为客户奉献高品质产品，高素质的研发工程师为客户奉献精湛的产品图纸和创新的产线方案。
With world-leading manufacturing bases, The Yangtze River delta technical workers, embodying craftsmanship, are dedicated to delivering high-quality products to customers. Our highly skilled R&D engineers also provide excellent product drawings and innovative production line solutions.

4. 百年实践经验 Century-Proven Expertise

核心团队拥有多年的饲料生产与养殖生产设备现场使用经验，把设备使用中痛点和关切，融入正大机电企业的产品设计和工程施工中，我们提供有灵魂的产品和工程总包服务。
Our core team integrates decades of hands-on experience in feed production and farming operations into product design and engineering services, delivering soulful products and turnkey solutions that address real-world challenges and resonate with our clients' needs.

5. 数智化赋能 Digital Intelligence Empowerment

正大机电企业的数智化专业团队，能够帮助客户将工业1.0、工业2.0、工业3.0的生产场景，提升到工业4.0；我们开发的数智化产品和服务，包括饲料厂智能控制系统CPS、制粒机一键启动、养猪场数字化系统、养殖场巡检机器人等，已经在正大集团和其它头部企业应用，打通全产业链的数据联通，帮助客户创造高价值、高回报。
Our digitalization specialists help customers upgrade their production scenarios from Industry 1.0, Industry 2.0, and Industry 3.0 to Industry 4.0; The digital products and services we have developed, including the intelligent control system CPS for feed mills, one click start for granulators, digital system for pig farms, and inspection robots for breeding farms, have been applied in CP Group and other leading enterprises, connecting the entire industry chain and helping customers create high value and high returns.

目录 Contents

清理设备 Cleaning Equipment	01-07	调质器、保持器 Conditioner & Retainer	26-28	螺旋输送机 Screw Conveyor	50-52	标杆项目 Excellent Project	64
旋转分配器、风机 Rotary Distributor & Fan	08-10	双轴膨化机、单轴膨化机 膨胀器、烘干机 Twin/Single-Screw Extruder, Expander and Dryer	29-31	脉冲除尘器 Impulse Dust Collector	53-54		
粉碎机、叶轮喂料器 Hammer Mill & Impeller	11-14	逆流冷却器、叶轮冷却器 翻板冷却器、夹套稳定器 Counterflow Cooler, Impeller Type Cooler, Flap Type Cooler, Slat Jacketed Stabilizer	32-35	关风器 Airlock	55		
配料秤、秤斗 Dosing Scale & Scale hopper	15	破碎机 Crumbler	36-37	闸门、圆弧闸门、三通 气动双向分配阀 Gate, Circular Gate, 2-Way ,Pneumatic 2-way Distribution Gate	56-60		
全自动微量元素系统 Automatic micronutrient scale	16-17	回转分级筛、振动分级筛 Gyro-grading Sifter & Oscillating Grading Sifter	38-40	蝶阀 Butterfly Gate	61		
混合机 Mixer	18-21	包装秤 缝包输送机 Bagging Scale & Bag Sewing Machine and Belt Conveyor	41-44	喷涂机 Spray Machine	62		
液体添加机 Liquid Addition Machine	22-24	斗式提升机 Bucket Elevator	45-48	自动取样器 Autosampler	63		
制粒机 Pellet Mill	25	刮板输送机 Chain Conveyor	48	可移动伸缩溜管 Mobile Telescopic Chute	63		

双层圆筒清理筛
Double-deck Drum Sifter



型号 Model	产量 (t/h) Capacity	功率 (kW) Power
TCQS100/220	30-85	2.2+2.2
TCQS100/320	60-110	3+2.2
TCQS100/420	75-120	3+2.2
TCQS125/320	80-150	4+2.2
TCQS125/420	100-150	4+2.2

大豆：内筛筛筒孔径：D14-16mm，外筛筛筒孔径：D4.0-5.5。

·SEW reducer drive, SKF bearing;

·Beautiful appearance, compact structure, adjustable sieve cylinder inclination;

·The effect of separating large, medium and light impurities at the same time;

·Corn:inner sieve cylinder aperture: D18-24mm, outer sieve cylinder aperture:D4.5-6.5mm;□

Wheat:Inner sieve sieve cylinder aperture:D16-22mm, outer sieve sieve cylinder aperture: 1.6-1.8*20

Soybean:Diameter of inner sieve sieve cylinder:D14-16mm, outer sieve sieve cylinder aperture, D4.0-5.5.

旋振筛
Rotary Vibrating Screen



型号 Model	产量 (t/h) Capacity	功率 (kW) Power
XZS125x250	25-50	3
XZS150x250	30-70	3
XZS150x300	30-80	4
XZS150x360	30-90	4
XZS200x250	30-100	4
XZS200x300	40-110	5.5
XZS200x360	50-120	5.5

·SEW齿轮减速机，SKF轴承，结构紧凑，寿命长，故障率低；

·配置循环风选器；

·配置快开式清理门；

·筛网参数可自由选配。

·SEW gear reducer, SKF bearing, compact structure, long life, low failure rate;

·Configure the circulating air selector;

·Configure quick opening cleaning door;

·The screen parameters can be freely selected.

固定式投料站（投料口振动筛）

Fixed Dumping Station (Feeding port Oscillating Sieve)

- 固定式投料口，不锈钢制作，内外抛光，适用预混料的投料作业，既能除杂又能除粉尘，确保投料作业清洁、环保；
- 含投料口、振动筛、脉冲除尘器、静音铝壳风机；
- 可移动定位投料，可有效去除大杂，且除尘效果好，噪音低。
- The fixed feeding port, made of stainless steel, polished inside and outside, is suitable for the feeding operation of premix, which can remove impurities and dust, ensuring the feeding operation is clean and environmentally friendly;
- Including feeding port, Oscillating Sieve, pulse dust collector, silent aluminum shell fan;
- The movable positioning and feeding can effectively remove large impurities, and the dust removal effect is good and the noise is low.

型号 Model	产量 (t/h) Capacity	功率 (kW) Power
STFZ75B	5-10	0.12
STFZ100B	8-15	0.25



旋转分配器、风机

Rotary Distributor & Fan

旋转分配器

Rotary Distributor

型号 Model	产量 (t/h) Capacity	功率 (kW) Power
TFPX4X200	粉Powder30 粒Pellet40	0.55
TFPX4X250	粉Powder40 粒Pellet60	0.55
TFPX4X300	粉Powder60 粒Pellet100	0.55
TFPX6X200	粉Powder30 粒Pellet40	0.55
TFPX6X250	粉Powder40 粒Pellet60	0.55
TFPX6X300	粉Powder60 粒Pellet100	0.55
TFPX8X200	粉Powder30 粒Pellet40	0.55
TFPX8X250	粉Powder40 粒Pellet60	0.55
TFPX8X300	粉Powder60 粒Pellet100	0.55
TFPX10X250	粉Powder40 粒Pellet60	0.75
TFPX10X300	粉Powder60 粒Pellet100	0.75
TFPX12X250	粉Powder40 粒Pellet60	0.75
TFPX12X300	粉Powder60 粒Pellet100	0.75
TFPX14X250	粉Powder40 粒Pellet60	0.75
TFPX14X300	粉Powder60 粒Pellet100	0.75
TFPX16X250	粉Powder40 粒Pellet60	0.75
TFPX16X300	粉Powder40 粒Pellet60	0.75



- 杰牌减速机，FK轴承；
- 圆锥形结构，带大检修门，调试维护方便；
- 旋转机构内配有清扫刷，能自动清理机内积料；
- 卸料伸缩管出料端可配防窜料封板。
- Jie brand reducer, FK bearing;
- Conical structure, with large access door, easy to debug and maintain;
- The rotating mechanism is equipped with a cleaning brush, which can automatically clean the accumulated material in the machine;
- The discharge end of the discharge telescopic tube can be equipped with an anti-channeling sealing plate.

风机
Fan



丹徒风机，西门子贝德电机
·如加变频电机价格另计；
·如加手动调节阀价格另计。
Dantu fan, Siemens Bader motor
·If the frequency conversion motor is added, the price will be calculated separately;
·If you add a manual control valve, the price will be calculated separately.

型号 Model	功率 (kW) Power	风量 (m³/h) Air Volume
4-72-2.8A	1.5	1130-2356
4-72-3.2A	2.2	1688-3517
4-72-3.6A	3	1332-2634
4-72-3.6A	4	2264-5268
4-72-4A	5.5	4012-7419
4-72-4.5A	7.5	5712-10562
4-72-5A	11	3864-7728
4-72-5A	15	7728-15455
4-72-6C	11	9209-18418
4-72-6C	15	10314-20628
4-72-6C	18.5	10820-21640
4-72-6C	22	11972-23943
4-72-7C	18.5	15812-24038
4-72-7C	22	11130-21367
4-72-8C	22	17463-22435
4-72-8C	30	24982-32380
4-72-8C	37	28105-36427
4-72-8C	45	21829-40474
4-72-10C	30	31237-43722
4-72-10C	37	34863-48797
4-72-12C	45	48195-60397
4-72-12C	55	63953-67457
6-30-5A	7.5	2240-4776
6-30-5.5A	11	3013-6422
6-30-6A	15	3912-8338

风机
Fan



丹徒风机，西门子贝德电机
·如加变频电机价格另计；
·如加手动调节阀价格另计。
Dantu fan, Siemens Bader motor
·If the frequency conversion motor is added, the price will be calculated separately;
·If you add a manual control valve, the price will be calculated separately.

型号 Model	功率 (kW) Power	风量 (m³/h) Air Volume
6-30-6C	7.5	2937-6261
6-30-6C	11	3338-7114
6-30-7C	15	4282-9129
6-30-7C	22	4770-10168
6-30-7C	30	5300-12500
6-30-9C	22	7420-13410
6-23-7C	11	2558-4825
6-23-7C	15	3046-5790
6-23-7C	22	3173-6031
6-23-8C	22	4736-9002
9-19-3.5A	7.5	939-1325
9-19-5.6A	11	2262-3619
9-19-6.3A	18.5	3220-5153
9-19-6.3A	30	5690-6978
9-26-5A	15	4293-6319
9-26-5.6A	22	6032-7185
9-26-5.6A	30	7766-9500
9-26-6.3A	37	10970-11685
9-26-6.3A	45	8588-11883
9-26-6.3A	55	12699-13525
9-26-7.1A	55	12292-14643

粉碎机
Hammer Mill



型号 Model	产量 (t/h) Capacity	功率 (kW) Power
SWFP66x40	1.5-2.5	45
	2.5-3.5	55
SWFP66x80	5-6.5	75
	6-8	90
	7-8	110
SWFP66x125	7-9.5	110
	8-11	132
	10-13.5	160
	13-17	200

- ABB电机，SKF轴承；
- 粉碎室根据机型大小设为单腔或多腔结构，物料分布均匀；
- 锤片排布可以设置为四组或八组，满足物料的粗、细粉碎，转子可以正反运转，延长锤片使用寿命；
- 粉碎室底部设有U形二次粉碎室，可有效消除粉碎过程中的环流现象，提高粉碎产能和粉碎细度；
- 加大转子主轴设计，转子刚性更强，并经过高精度动平衡测试，运转平稳，噪音低；
- 可移位的敞开式操作门，特殊的弹性压筛架，可快捷的更换锤片和筛网；
- 可选配温度传感器、测振仪、火焰探测器，防爆电机等。
- ABB motors, SKF bearings;
- The crushing chamber is set as a single-cavity or multi-cavity structure according to the size of the model, and the material distribution is uniform;
- The arrangement of hammers can be set to four groups or eight groups to meet the coarse and fine crushing of materials, and the rotor can run forward and reverse to prolong the service life of the hammers;
- The bottom of the crushing chamber is provided with a U-shaped secondary crushing chamber, which can effectively eliminate the circulation phenomenon in the crushing process and improve the crushing capacity and crushing fineness;
- Enlarged rotor spindle design, stronger rotor rigidity, and after high-precision dynamic balance test, stable operation and low noise;
- Displaceable open operation door, special elastic screen press frame, can quickly replace hammer and wire screen;
- Optional temperature sensor, vibration meter, flame detector, explosion-proof motor, etc.

粉碎机
Hammer Mill



型号 Model	产量 (t/h) Capacity	功率 (kW) Power
SFSP56x40	4-6	30
	5-7	37
	6-8	45

- ABB电机、SKF轴承；
- 四组锤片，适合原粮或农副产品的颗粒、粉片状物料的粉碎；
- 含减震器4个；including 4 shock absorbers（产量以φ3mm筛板，筛板开孔率不低于33%，原料为水分不超过13%玉米计算）。
- ABB motors, SKF bearings;
- Four sets of hammers, suitable for the crushing of raw grains or agricultural and sideline products, granules, powder and flake materials;
- Including 4 shock absorbers(The output is calculated based on φ3mm sieve plate, the opening rate of the sieve plate is not less than 33%, and the raw material is corn with a moisture content of not more than 13%)

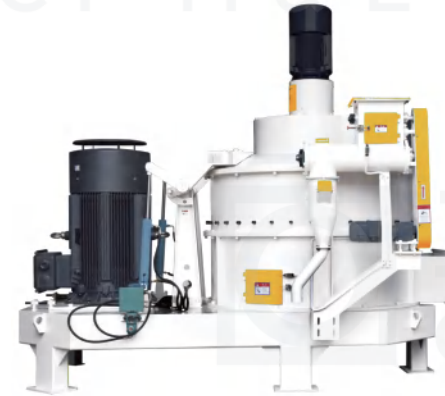
叶轮喂料器 Impeller Feeder



型号 Model	产量 (t/h) Capacity	功率 (kW) Power
SWLY300	10-15	1.1
SWLY400	12-25	1.1
SWLY600	20-35	1.1
SWLY800	15-40	1.1
SWLY1200	30-70	1.5

- SEW齿轮减速机传动，SKF轴承；变频电机控制；
- 加密叶轮喂料辊形式，工作电流更稳定；
- 活动式除铁杂结构，清理铁杂更方便。
- SEW gear reducer drive, SKF bearing; frequency conversion motor control;
- Encrypted impeller feeding roller form, the working current is more stable;
- The movable iron removal structure makes it more convenient to clean the iron impurities.

超微粉碎机 Ultrafine Pulverizer



型号 Model	产量 (t/h) Capacity	功率 (kW) Power
SWFL110	2.5-3t/h(虾料,95%过80目) 3-5t/h(膨化鱼料,80%过60目) 2.5-3t/h (shrimp feed, 95% over 80 mesh) 3-5t/h (expanded fish feed, 85% over 60 mesh)	90+11+1.5
	2.5-3t/h(虾料,95%过80目) 3-5t/h(膨化鱼料,85%过60目) 2.5-3t/h (shrimp feed, 95% over 80 mesh) 3-5t/h (expanded fish feed, 85% over 60 mesh)	110+11+1.5
	3.5-5t/h(虾料,95%过80目) 4-7t/h(膨化鱼料:85%过60目) 3.5-5t/h (shrimp feed, 95% over 80 mesh) 4-7t/h (expanded fish feed: 85% over 60 mesh)	132+15+1.5
SWFL130	4-6.5t/h(虾料) 6-9t/h(膨化鱼料) 4-6.5t/h(shrimp feed) 6-9t/h(expanded fish feed)	160+15+1.5
	5-7t/h(虾料,95%过80目) 7-9t/h(膨化鱼料,85%过60目) 5-7t/h (shrimp feed, 95% over 80 mesh) 7-9t/h (expanded fish feed, 85% over 60 mesh)	160+18.5+1.5
	7-9t/h(虾料,95%过80目) 8-12t/h(膨化鱼料:80%过60目) 7-9t/h (shrimp feed, 95% over 80 mesh) 8-12t/h (expanded fish feed: 80% over 60 mesh)	220+18.5+1.5

- ABB电机、主轴轴承采用美国铁姆肯轴承；其它轴承采用SKF轴承；
- 适用于虾饲料、水产膨化饲料的超微粉碎；
- 立轴无筛式结构，粉碎、分级同步完成；
- 主轴轴承采用风冷，克服高速、重载的主轴轴承工作时引起的温度过高；
- 带安全锁的侧开门，可方便更换安装锤头和耐磨板；
- 带液压升降顶盖的装置，可以方便更换齿圈；
- 粉碎粒度60-200目连续可调，虾料95%过80目，膨化预料85%过60目。
- ABB motor and spindle bearings use American Timken bearings; other bearings use SKF bearings;
- It is suitable for superfine grinding of shrimp feed and aquatic extruded feed;
- Vertical shaft without wire screen structure, crushing and grading are completed simultaneously;
- The main shaft bearing is air-cooled to overcome the high temperature caused by the high-speed and heavy-duty main shaft bearing operation;
- The side door with safety lock can easily replace and install the hammer and wear plate;
- The device with hydraulic lifting top cover can easily replace the ring gear;
- The crushing particle size is continuously adjustable from 60 to 200 mesh, 95% of the shrimp feed exceeds 80 mesh, and 85% of the puffing is expected to exceed 60 mesh.

配料秤
Dosing Scale



型号 Model	产量 (kg/batch) Capacity
PCS-01	100kg/批 batch
PCS-015	150kg/批 batch
PCS-02	200kg/批 batch
PCS-03	300kg/批 batch
PCS-05	500kg/批 batch
PCS-10	1000kg/批 batch
PCS-15	1500kg/批 batch
PCS-20	2000kg/批 batch
PCS-30	3000kg/批 batch
PCS-40	40000kg/批 batch

- 配料精准，操作简单，残留低；碳钢或不锈钢制作（不锈钢表面抛光处理）；
- 传感器品牌可选柯力/托利多。
- Accurate ingredients, simple operation and low residue; made of carbon steel or stainless steel (stainless steel surface polishing);
- The sensor brand is optional: Keli/Toledo.



- 通过智能系统控制，精准完成各种粉料、粒料微量物质自动称重配料，自动输送，确保了饲料产品的质量；
- 提高生产效率，系统可保持与主配料系统同时完成配料，减少人工称重配料；
- 品质的可追溯，电脑配料记录系统可存储每批微量物质添加的记录数据，并自动生成报表；
- 断电保持功能，系统会自动记忆，电力恢复后“一键操作”可恢复到断电前的工作状态继续配料生产；
- 配置单点除尘系统，每个仓安装独立

的滤尘布袋，投料时系统自动启动除尘。

- Through intelligent system control, it accurately completes automatic weighing and batching of all kinds of powder and granular micronutrient, automatic conveying, ensuring the quality of feed products;
- Improve the production efficiency, the system can maintain the main batching system to complete batching at the same time, reduce manual weighing batching;
- Quality traceability, the computer ingredients recording system can store each batch of micronutrient added record data, and automatically generate reports;
- Power off to keep function, the system will automatically memory, after power recovery "one key operation" can be restored to the working state before power off to continue batching production;
- Equipped with single point dust pelletizing system, each bin is equipped with an independent dust filter bag, the system automatically starts dust removal when feeding.

称重范围 Weighing Range	单料动态配料误差 Single Material Dynamic Burden Error	配料速度 Batching Speed
≤10kg	< ±3g	3kg/min
≤20kg	< ±6g	6kg/min
≤30kg	< ±8g	9kg/min
≤50kg	< ±15g	15kg/min
≤100kg	< ±15g	15kg/min

吨袋组（叉车上袋型）

Ton Bags Group (Forklift Type)

·304不锈钢过渡斗：0.2立方米，含2个气锤；·304不锈钢配料绞龙：螺带式变距空心绞龙， $\phi 120\text{mm}$ ，恒星减速机配新菱变频电机（减速机+电动机，变频电机），尼龙无油轴承，含气动截料门；·碳钢吨袋架（Q235方管60*60）。
·304 stainless steel transition bucket: 0.2 cubic meters, including 2 air hammers;
·304 stainless steel batching auger: screw-belt variable-pitch hollow auger, $\phi 120\text{mm}$, star reducer with Xinling frequency conversion motor (reduction box + motor, frequency conversion motor), nylon oil-free bearing, including pneumatic cutting door;·Carbon steel ton bag holder (Q235 square tube 60*60).

吨袋支撑架为方形，尺寸1400mm*1400mm；托口尺寸 $\phi 1200\text{mm}$ ，托口以上可调节的高度为1200mm-2000mm；吨袋支撑架载重 $\leq 2000\text{Kg}$ 。

The ton bag support frame is square, the size is 1400mm*1400mm; The size of the support mouth is $\phi 1200\text{mm}$, and the adjustable height above the support mouth is 1200mm-2000mm; The load of the ton bag support frame is less than or equal to 2000Kg.

吨袋组（电动葫芦上袋型）

Ton Bags Group (Electric Hoist Type)

·304不锈钢过渡斗：0.2立方米，含2个气锤；·304不锈钢配料绞龙：螺带式变距空心绞龙， $\phi 120\text{mm}$ ，恒星减速机配新菱变频电机（减速机+电动机，变频电机），尼龙无油轴承，含气动截料门；·碳钢吨袋架（Q235方管60*60）；·支架、轨道及滑轮；·2T电动葫芦。

·304 stainless steel transition bucket: 0.2 cubic meters, including 2 air hammers;·304 stainless steel batching auger: screw-belt variable-pitch hollow auger, $\phi 120\text{mm}$, star reducer with Xinling frequency conversion motor (reduction box + motor, frequency conversion motor), nylon oil-free bearing, including pneumatic cutting door;·Carbon steel ton bag holder (Q235 square tube 60*60); ·Brackets, rails and pulleys;·2T electric hoist.

吊装式，利用用户原有钢梁进行安装；吨袋支撑架为方形，尺寸1400mm*1400mm；托口尺寸 $\phi 1200\text{mm}$ ，托口以上可调节的高度为1200mm-2000mm；吨袋支撑架载重 $\leq 2000\text{Kg}$ 。

Lifting type, using the user's original steel beam for installation; The ton bag support frame is square, with a size of 1400mm*1400mm; The size of the support opening is $\phi 1200\text{mm}$, and the adjustable height above the support opening is 1200mm-2000mm; The load of the ton bag support frame is $\leq 2000\text{Kg}$.

支撑式，现场制作支撑钢架安装；吨袋支撑架为方形，尺寸1400mm*1400mm；托口尺寸 $\phi 1200\text{mm}$ ，托口以上可调节的高度为1200mm-2000mm；吨袋支撑架载重 $\leq 2000\text{Kg}$ 。

Support type, makes the supporting steel frame on site for installation; The ton bag support frame is square, the size is 1400mm*1400mm; The size of the support opening is $\phi 1200\text{mm}$, and the adjustable height above the support opening is 1200mm-2000mm; The load of the ton bag support frame is less than or equal to 2000Kg.

双轴桨叶混合机（碳钢）

Double-shaft Paddle Mixer (Carbon Steel)



型号 Model	产量 (kg/batch) Capacity	功率 (kW) Power
HHJS500	250	5.5/7.2
HHJS1000	500	15
HHJS2000	1000	18.5/22
HHJS3000	1500	22
HHJS4000	2000	30
HHJS6000	3000	45
HHJS8000	4000	55
HHJS10000	5000	55

·碳钢材质，采用SEW减速机链轮传动形式、SKF轴承、SMC气缸，碳钢制作；
·采用经典双轴桨叶结构，利用失重原理进行混合，混合周期短、混合均匀度 $C_v \leq 5\%$
·加大容积设计，装填系数可变范围大，同时可提高液体雾化的角度和空间，使得液体混合的效果更佳；
·全长对开式排料门，排料更快捷，残留少；
·带安全锁的检修门，方便清理和维护。
·Carbon steel material, using SEW reducer sprocket transmission form, SKF bearing, SMC cylinder ;
·The classic double-shaft paddle structure is adopted, and the weightless principle is used for mixing, the mixing cycle is short, and the mixing uniformity C_v is less than or equal to 5%;
·Increase the volume design, the variable range of the filling coefficient is large, and at the same time, the angle and space of liquid atomization can be improved, so that the effect of liquid mixing is better;
·Full-length split-type discharge door, discharge more quickly and less residue;
·Access door with safety lock for easy cleaning and maintenance.

双轴浆叶混合机（不锈钢）

Double-shaft Paddle Mixer(Stainless Steel)



型号 Model	产量 (kg/batch) Capacity	功率 (kW) Power
HHJS500	250	5.5/7.2
HHJS1000	500	15
HHJS2000	1000	18.5/22
HHJS3000	1500	22
HHJS4000	2000	30
HHJS6000	3000	45
HHJS8000	4000	55
HHJS10000	5000	55

- 不锈钢材质，采用SEW减速机链轮传动形式、SKF轴承、SMC气缸；
- 采用经典双轴浆叶结构，利用失重原理进行混合，混合周期短、混合均匀度 $C_v \leq 5\%$ ；
- 加大容积设计，装填系数可变范围大，同时可提高液体雾化的角度和空间，使得液体混合的效果更佳；
- 全长对开式排料门，排料更快捷，残留少；
- 带安全锁的检修门，方便清理和维护。
- Stainless steel material, adopt SEW reducer sprocket transmission form, SKF bearing, SMC cylinder;
- The classic double-shaft paddle structure is adopted, and the weightless principle is used for mixing, the mixing cycle is short, and the mixing uniformity C_v is less than or equal to 5%;
- Increase the volume design, the variable range of the filling coefficient is large, and at the same time, the angle and space of liquid atomization can be improved, so that the effect of liquid mixing is better;
- Full-length split-type discharge door, discharge more quickly and less residue;
- Access door with safety lock for easy cleaning and maintenance.

单轴浆叶混合机（碳钢）

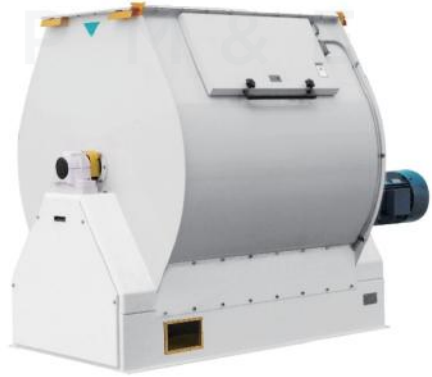
Single-shaft Paddle Mixer (Carbon Steel)



型号 Model	产量 (kg/batch) Capacity	功率 (kW) Power
HHJD300	150	4
HHJD500	250	5.5/7.5
HHJD1000	500	11
		15
HHJD2000	1000	18.5
		22
HHJD4000	2000	30
		37
HHJD6300	3000	45
HHJD8000	4000	55

- SEW减速机、SKF轴承、SMC气缸；
- 单轴可调桨叶结构，桨叶和壳体间隙可调，残留量在0.05%之内；
- 筒体长宽比1:1，混合效果好；
- 混合速度快，每批混合时间90秒即可达到混合要求， $CV \leq 3\%$ ；
- 带安全锁的大检修门，卸料门为不锈钢制作，全开门结构；
- 带单排喷吹管，可快速吹去残留。
- Stainless steel material, adopt SEW reducer sprocket transmission form, SKF bearing, SMC cylinder;
- Single-axis adjustable paddle structure, the clearance between the blade and the shell is adjustable, and the residual amount is within 0.05%.
- The aspect ratio of the cylinder is 1:1, and the mixing effect is good;
- The mixing speed is fast, the mixing time of each batch can reach the mixing requirements within 90 seconds, and the CV is less than or equal to 3%;
- The large access door with safety lock, the discharge door is made of stainless steel, fully open structure;
- With a single-row blowing pipe, the residue can be quickly blown away.

单轴高速混合机（不锈钢钢） single-shaft Paddle Mixer (Stainless Steel)



型号 Model	产量 (kg/batch) Capacity	功率 (kW) Power
HHJD300	150	4
HHJD500	250	5.5/7.5
HHJD1000	500	11
		15
HHJD2000	1000	18.5
		22
HHJD4000	2000	30
		37
HHJD6300	3000	45
HHJD8000	4000	55

- SEW减速机、SKF轴承、SMC气缸；
- 与物料接触部位不锈钢制作；
- 单轴可调桨叶结构，桨叶和壳体间隙可调，残留量在0.05%之内；
- 筒体长宽比1:1，混合效果好；
- 混合速度快，每批混合时间90秒即可 达到混合要求，CV≤3%；
- 带安全锁的大检修门，卸料门为不锈钢制作，全开门结构；
- 带单排喷吹管，可快速吹去残留。
- Stainless steel material, adopt SEW reducer sprocket transmission form, SKF bearing, SMC cylinder;
- The parts in contact with the material are made of stainless steel;
- Single-axis adjustable paddle structure, the clearance between the blade and the shell is adjustable, and the residual amount is within 0.05%.
- The aspect ratio of the cylinder is 1:1, and the mixing effect is good;
- The mixing speed is fast, the mixing time of each batch can reach the mixing requirements within 90 seconds, and the CV is less than or equal to 3%;
- The large access door with safety lock, the discharge door is made of stainless steel, fully open structure;
- With a single-row blowing pipe, the residue can be quickly blown away.

液体添加机 Liquid Addition Machine

型号 Model	产量 (kg/batch) Capacity	功率 (kW) Power
SYTV32	喷油量：32升/分钟，配 500-1500公斤/批混合机 Oil l injection volume: 32 liters/min, with 500-1500 kg/batch mixer	2.2+2.2 +0.75
SYTV63	喷油量：63升/分钟，配套 2000公斤/批混合机 Oil l injection volume: 60 liters/min, with 2000 kg/batch mixer	2.2+2.2
SYTV120	喷油量：120升/分钟，配3000 公斤/批混合机 Oil l injection volume: 120 liters/min, with 3000 kg/batch mixer	2.2+0.75



- 西门子贝得电机，适用于食品或配合饲料混合机内添加油脂等液体营养成分；
- 贮液罐内液体温度、液位均可实现自动控制，进液和添加液体均可实现自动化；
- 含进油泵、出油泵、进出油过滤器，蒸汽或热水加热装置、搅拌装置。
- Siemens Beide motor is suitable for adding liquid nutrients such as oil and fat in food or compound feed mixers;
- The liquid temperature and liquid level in the liquid storage tank can be automatically controlled, and the liquid feeding and liquid addition can be automated;
- Including oil inlet pump, oil outlet pump, oil inlet and outlet filter, steam or hot water heating device, stirring device.

液体添加秤 Liquid Addition Scale

型号 Model	产量 (kg/batch) Capacity	功率 (kW) Power
SYTV32	最大称量50KG/批液体 Maximum Weighing 50kg/Batch of Liquid	2.2

- 西门子贝得电机、采用称重计量方式，添加精确，误差小；
- 上部为称重单元、下部为泵送单元，配搅拌装置，可实现称重泵送连续工作，工作效率高。
- Siemens Beide motor adopts weighing measurement method, adding accurate and small error;
- The upper part is the weighing unit and the lower part is the pumping unit, equipped with a stirring device, which can realize the continuous work of the weighing and pumping, and the work efficiency is high.

液体添加管路模块系统

Liquid Addition Line Modular System

型号 Model	介绍 Introduction
配equipped with SYTV32	DN15或DN20、DN25无缝钢管管道，配套无锡源华阀件 DN15 or DN20, DN25 seamless steel pipe, matching with Wuxiyuanhua valve parts
配equipped with SYTV63	DN25或DN40无缝钢管管道，配套无锡源华阀件 DN25 or DN40 seamless steel pipe, matching with Wuxiyuanhua valves
配equipped with SYTV120	DN15或DN20、DN50无缝钢管管道，配套无锡源华阀件 DN15 or DN20, DN50 seamless steel pipe, matching with Wuxiyuanhua valve parts

- 管路、阀件采用碳钢材质，保温费用另计。
- Pipes and valves are made of carbon steel, and the cost of insulation is extra.

液体混合机

Liquid Mixer

型号：SSTV60

产量 (t/h)：60kg/批 batch

功率 (kW)：3

该机采用微电脑自动控制，添加比例准确可靠，添加误差≤0.5%，适用于向混合机内添加水，解决饲料厂原料水份过低，成本过高问题，西门子贝得电机、轴承；不锈钢制作。

Model:SSTV60

Capacity:60kg/批 batch

Power:3

The machine is automatically controlled by microcomputer, the adding ratio is accurate and reliable, and the adding error is less than or equal to 0.5%. It is suitable for adding water to the mixer to solve the problem of low water content and high cost of raw materials in feed factories. Siemens Beide motor and bearing; stainless steel production.



大油罐

Big Oil Tank

15m³、20m³、30m³、40m³、50m³

碳钢制作，立式、卧式可选。

Made of carbon steel, vertical and horizontal optional.

糖蜜添加系统

Molasses Application System

磷脂添加系统

Phospholipid Application System

鱼浆添加系统

Fish Paddles Application System

型号:STMT60

产量(kg/min):60kg/min

功率(kW):5.5+5.5+2.2

型号:SLZT60

产量(kg/min):≤60kg/min

功率(kW):5.5

型号:SYJT60

产量(kg/min):≤2m³/h

功率(kW):4

采用先进的微电脑自动控制技术，具有自动化程度高，添加比例准确，控制可靠，操作方便等特点。适用于饲料厂向混合机中添加水、糖蜜、磷脂、鱼浆等液体营养成分，蒸汽加热式或水加热西门子贝得电机、轴承。

Using advanced microcomputer automatic control technology, it has the characteristics of high degree of automation, accurate addition ratio, reliable control and convenient operation. It is suitable for feed factories to add liquid nutrients such as water, molasses, phospholipids, fish paddles and other liquid nutrients to the mixer, steam heating or water heating Siemens Beide motors and bearings;

液体混合机

Liquid Mixer

型号 Model	产量 (t/h) Capacity	功率 (kW) Power
ALM-20T/h	20	22-45
ALM-40T/h	40	
ALM-60T/h	60	



西门子贝德变频电机，SKF轴承及轴承座，带轴端防护装置，皮带传动，接触部分为304不锈钢，液体添加范围为1%-6%，液体添加管路及散式喷嘴数量可根据工艺调整。

Siemens Beide variable frequency motor, SKF bearings and bearing seats, with shaft end protection device, belt drive, contact part made of 304 stainless steel, liquid addition range of 1% -6%, liquid addition pipeline and dispersed nozzle quantity can be adjusted according to the process.

制粒机 Pelletmill

制粒机 Pelletmill

型号 Model	产量 (t/h) Capacity	功率 (kW) Power
SZLH350	4-6	55
SZLH400	3-8	75
	3-9	90
SZLH420/CP M3016-3/4	3-12	110
SZLH520/CP M3020-6/7	4-15	132
	15-18	160
SZLH558/CP M3022-8	18-20	185
	20-22	200



- 主机ABB电机、SKF轴承、进口油封；
- 经典的齿轮传统制粒机，环模加宽型设计，生产效率高；
- 箱体采用加工中心加工，精度高，存油大，油温低；
- 齿轮、齿轴采用硬齿面磨齿齿轮，寿命达到10万小时；
- 主轴采用德国深孔钻床钻销油孔，光洁度高；
- 自动润湿系统/环模起吊器/制粒机自动控制系统，费用另计。
- Main engine ABB motor, SKF bearing, imported oil seal;
- Classic gear traditional pellet mill, ring die widened design, high production efficiency;
- The box body is processed by machining center, with high precision, large oil storage and low oil temperature;
- The gears and pinion shafts are made of hard-toothed gears, with a life span of 100,000 hours;
- The main shaft adopts the German deep hole drilling machine to drill the oil hole, and the finish is high;
- Automatic mixing system / ring die lifter / automatic control system of pellet mill, the cost will be charged separately.

调质器、保持器 Conditioner & Retainer

喂料器 Feeder

型号 Model	产量 (t/h) Capacity	功率 (kW) Power
SWLL20	5-15	1.1
SWLL25	10-25	1.5



SEW齿轮减速机，SKF轴承，不锈钢制作，变螺距设计，变频控制
SEW gear reducer, SKF bearing, stainless steel, variable pitch design, frequency control;

调质器 Conditioner

型号 Model	产量 (t/h) Capacity	功率 (kW) Power
STZJ350	5-10	5.5
STZJ360	3-12	5.5
STZJ420	4-20	11
STZJ480	4-30	15

- ABB电机，SKF轴承，不锈钢制作，加长型，全长大开门；
- 特殊桨叶结构设计，残留量少，停机后不需要清理。
- ABB motor, SKF bearing, stainless steel, extended type, full length door;
- Special blade structure design, less residue, no need to clean up after shutdown.

夹套调质器 Jacketed Conditioner

型号 Model	产量 (t/h) Capacity	功率 (kW) Power
STZG360	3-12	7.5
STZG420	4-18	11
STZG480	4-30	15

- ABB电机，SKF轴承，蒸汽夹套式结构，不锈钢制作，长度3米，全长大开门。
- 特殊桨叶结构设计，残留量少，停机后不需要清理；
- ABB motor, SKF bearing, steam jacket structure, stainless steel, length 3 meters, full length door;
- Special blade structure design, less residue, no need to clean up after shutdown.

喂料器 Feeder

型号 Model	产量 (t/h) Capacity	功率 (kW) Power
STZB1000 (680x3200)	3-12	5.5
STZB1500 (800x3200)	4-15	7.5
STZB2000 (900x3200)	4-18	7.5
STZB2500 (1000x3200)	5-25	11
STZB3000 (1000x4200)	8-30	11



- SEW减速机, SKF轴承;
- 与物料接触部位不锈钢制作, 外部夹套蒸汽加热, 内部满面式螺旋叶片输送物料, 可保证先进先出, 减少残留和交叉污染;
- 加大主轴设计, 确保螺旋主轴的刚性, 出

料端有特殊的匀料结构, 确保制粒机电流稳定;

- 全长大开门结构, 并带有观察窗方便观察物料充满系数; 方便维护清理;
- 调质温度达85-100℃ (可调), 调质时间3分钟以上, 可充分熟化提高耐水性并可以杀灭非洲猪瘟病毒及沙门氏菌等。
- 适用于水产料、教保料、中大猪料的调质熟化作业以及杀灭非洲猪瘟病毒作业;
- 保持器加热既可以采用夹套式也可以采用热甲式, 热甲式保持器每台另加2-3万元。
- SEW reducer, SKF bearing;
- The parts in contact with the material are made of stainless steel, the outer jacket is heated by steam, and the inner full-surface spiral blade conveys the material, which can ensure FIFO and reduce residual and cross-contamination;
- Enlarge the design of the main shaft to ensure the rigidity of the screw main shaft, and the discharge end has a special homogeneous material structure to ensure the stability of the current of the Pellet Mill;
- The full-length door opening structure is equipped with an observation window to facilitate the observation of the feed filling factor; it is convenient for maintenance and cleaning;
- The tempering temperature reaches 85-100℃ (adjustable), and the tempering time is more than 3 minutes, which can fully mature and improve water resistance and can kill African swine fever virus and Salmonella;
- It is suitable for the conditioning and curing operations of aquatic feed, piglet feed& nursery feed, medium and large pig feed and the killing of African swine fever virus;
- The heating of the retainer can be either jacket type or hot armour type. Each heat armour retainer will cost an additional 20,000 to 30,000 yuan.

管形螺旋输送机 Tubular Screw Conveyor

型号 Model	产量 (t/h) Capacity	功率 (kW) Power
STZZ360 (360x3200)	3-12	5.5
STZZ420 (420x3200)	5-22	7.5
STZZ420 (420x4000)	5-25	7.5



- ABB电机, SKF轴承, 夹套保温, 桨叶加拨料杆设计形式、起到打散物料及稳定制

粒机电流作用。

- ABB motor, SKF bearing, jacket insulation, and the design of the paddle and the feeding rod, play the role of dispersing the material and stabilizing the current of Pellet Mill.

双轴差径调质器

DDC Different Diameter Cylinder Conditioner

型号 Model	产量 (t/h) Capacity	功率 (kW) Power
SDDC30 (SDDC48x36)	8-12	4+4
SDDC35 (SDDC58x44)	12-16	5.5+5.5
SDDC40 (SDDC68x51)	16-22	7.5+7.5



- 双齿轮减速机传动形式, 结构紧凑, 能耗低, SEW减速机, SKF轴承;
- 两桨叶轴交互排列不干涉, 桨叶角度可调;

- 两桨叶轴采用差径、差速设计, 物料运转路线长、调质时间长, 熟化度高;
- 与物料接触部位不锈钢制作, 全长大开门结构并配备安全开关, 清理维护方便、安全;
- 适合于鱼虾料、教保料、膨化料的调质作业。
- Double gear reducer transmission form, compact structure, low energy consumption, SEW reducer, SKF bearing;
- The two paddle shafts are arranged alternately without interference, and the paddle angle is adjustable;
- The two paddle shafts adopt differential diameter and differential speed design, the material running route is long, the tempering time is long, and the aging degree is high;
- The parts in contact with the material are made of stainless steel, with a full-length door opening structure and a safety switch, which is convenient and safe to clean and maintain;
- It is suitable for the conditioning operation of fish and shrimp feed, piglet f& nursery feed, and extruded feed.

双轴膨化机、单轴膨化机、膨胀器、烘干机
Twin/Single-screw Extruder, Expander and Dryer

单螺杆膨化机
Single-screw Extruder



型号 Model	产量 (t/h) Capacity	功率 (kW) Power
FEXS 165	4-5.5	160
FEXS 215	6-10t/h(250kw) 6-12t/h(315kw)	250/315

· Does not include SDDC30 differential conditioner, stainless steel disc feeding bin, SWLL20 stainless steel feeder.

双螺杆膨化机
Twin-screw Extruder

型号 Model	产量 (t/h) Capacity	功率 (kW) Power
FEXD 98x2	3-5t/h(160kw) 4-6t/h(200kw)	3+8+1.5+ (160/200)
FEXD 128x2	8-10	3+15+7.5+ (250/315)
FEXD 160x2	10-15	3+15+7.5+ (315/450)

· 包含: SPHD165主机 (含变频切割器);
· 不包含SDDC30差径调质器、不锈钢盘式喂料仓、SWLL20不锈钢喂料器。
· Include: SPHD165 host (including inverter cutter);

· 切刀单元;
· 挤压部分20D, 螺杆配置20D;
· 传动系统总成, WEG电机;
· 摇臂总成。
· Cutter unit;
· The extrusion part is 20D, and the screw configuration is 20D;
· Transmission system assembly, WEG motor;
· Rocker arm assembly.

投料口
Intake Hopper



型号 Model	产量 (t/h) Capacity	功率 (kW) Power
FDRD 2512x2D	8-10	120
FDRD 2514x2D	10-15	166

· 采用PLC触摸屏控制, 实现烘干分区, 烘干温度自动调节。循环风量控制, 新鲜空气进风量半自动可调。排湿空气主回路带温度及湿度显示, 循环及排湿风机可以变频调节。浮性料产能≥10t/h。成品水分不均匀度≤±1%, 蒸汽耗能160-200公斤/吨 (以3-4mm草鱼或鲫鱼料标准), 3mm沉性料250-300公斤/吨;

· 含电控柜、蒸汽阀件系统。
· It adopts PLC touch screen control to realize drying partition and automatic adjustment of drying temperature. Circulating air volume control, semi-automatic adjustment of fresh air intake air volume. The main circuit of dehumidifying air has temperature and humidity display, and the circulating and dehumidifying fans can be adjusted by frequency conversion. The production capacity of floating feed is ≥10t/h. The moisture unevenness of the finished product is ≤±1%, the steam energy consumption is 160-200 kg/ton (based on the standard of 3-4mm grass carp or crucian carp), and the 3mm sinking feed is 250-300 kg/ton;
· Including electric control cabinet, steam valve system.

膨胀器 Expander



型号 Model	产量 (t/h) Capacity	功率 (kW) Power
FEXP250	5.5-7.5	90
	7-9	110
	9-11	132
FEXP338	10-15	160
	15-17	200
	15-20	220

·变频喂料器、多点进汽调质器、主机系统、西门子贝得主电机、SKF轴承，杰牌减速器、进口皮带、机外稀油润滑系统，模拟屏操作系统，喂料变频控制，位移传感器开度控制，手动机外排料装置；

·100%消除原料中抗营养因子，降低豆粕中脲酶活性，国内首创低温制粒工艺生产高品质教槽料与乳猪料，或直接生产成片状料，特别适合于乳、仔猪饲料的生产，达到饲料卫生标准（绿色饲料），大大增加料肉比和饲养报酬，同时也可用于饲料原料处理，增加了原料使用价值，降低了饲料产品成本。

·Frequency conversion feeder, multi-point steam inlet conditioner, host system, Siemens Beider main motor, SKF bearing, Jie brand reducer, imported belt, external thin oil lubrication system, analog screen operating system, feeding frequency conversion control, displacement Sensor opening control, manual discharge device outside the machine;

·100% elimination of anti-nutritional factors in raw materials and reduction of urease activity in soybean meal. The first low-temperature granulation process in China to produce high-quality piglet feed, or directly into flake feed, especially suitable for the production of porklet and piglet feed. Reaching the feed hygiene standard (green feed), greatly increasing the feed-to-meat ratio and feeding remuneration, it can also be used for feed raw material processing, increasing the use value of raw materials and reducing the cost of feed products.

逆流冷却器、叶轮冷却器、翻板冷却器 夹套稳定器 Counterflow Cooler, Impeller Type Cooler, Flap Type Cooler, Slat Jacketed Stabilizer

滑阀式逆流冷却器 Slide Valve Type Counterflow Cooler



型号 Model	产量 (t/h) Capacity	功率 (kW) Power
SKLN16×16 (3m³)	4-6	1.5+0.55
SKLN20×20 (5m³)	10-12	1.5+0.55
SKLN22×22 (6m³)	12-15	1.5+0.55
SKLN24×24 (8m³)	15-22	1.5+1.1
SKLN26×26 (10m³)	22-25	2.2+1.1+1.5
SKLN28×28 (12m³)	20-30	2.2+1.1+1.5
SKLN32×32 (15m³)	25-35	2.2+1.1+1.5

·SEW减速机、SKF轴承；

·滑阀式往复排料机构，排料平稳、可靠；

·可适用于颗粒料、粉料的冷却作业，冷却风和物料相向流动，使颗粒顺向逐步冷却；

·内设可调锥形散料机构，布料均匀，冷却效果好；

·冷却器顶部用不锈钢制造，耐腐蚀性强，使用寿命长；

·仓体为八角形设计，无死角。

·SEW gear reducer, SKF bearing;

·Slide valve type reciprocating discharge mechanism, stable and reliable discharge;

·It can be applied to the cooling operation of granular feed and powder feed. The cooling air and the feed flow in opposite directions, so that the particles are gradually cooled in the forward direction;

·Built-in adjustable conical bulk feed mechanism, uniform cloth, good cooling effect;

·The top of the cooler is made of stainless steel, which has strong corrosion resistance and long service life;

·The silo body is octagonal design without dead angle.

圆筒初清筛 Drum Sieve



型号 Model	产量 (t/h) Capacity	功率 (kW) Power
SCY63	10-40	0.55
SCY80	20-40	0.75
SCY100	60-80	1.50
SCY125	80-100	1.50

- SEW齿轮减速机, SKF轴承, 结构紧凑, 寿命长, 故障率低;
- 采用水平悬臂筛筒, 逆向进料, 筛筒内部设有螺旋叶片, 增加了筛理长度, 确保筛理产量和杂质分离效率;
- 筛筒外围配有清扫刷, 可清理粘附在筛筒外表面的纤维类杂质从而不堵塞筛网。

· SEW gear reducer, SKF bearing, compact structure, long life, low failure rate;
 · The horizontal cantilever sieve cylinder is adopted, and the material is fed in the reverse direction. There are spiral blades inside the sieve cylinder, which increases the sieving length and ensures the sieving output and the separation efficiency of impurities;
 · There is a cleaning brush on the periphery of the screen cylinder, which can clean up the fibrous impurities adhering to the outer surface of the screen cylinder so as not to block the wire screen.

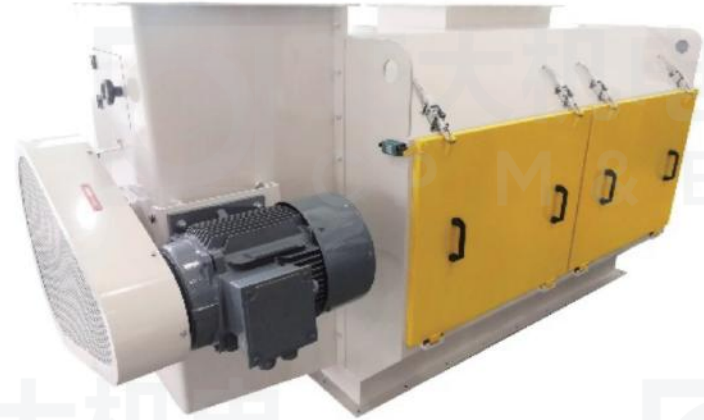
圆锥粉料清理筛 Conical Mash Pre-Cleaner

型号 Model	产量 (t/h) Capacity	功率 (kW) Power
SQLZ60 (60x50x80)	10-15	5.50
SQLZ90 (90x80x110)	25-30	11.00

- ABB电机, SKF轴承, 皮带传动, 螺旋蛟龙喂料方式, 圆锥形筛筒, 转子为打板形式;
- 主要适用于粉状副料的初清, 清理效果好, 除杂率≥99%。
- ABB motor, SKF bearing, belt drive, screw auger feeding method, conical sieve drum,

rotor in the form of beater plate;
 · It is mainly suitable for the initial cleaning of powdery auxiliary materials, with good cleaning effect and impurity removal rate ≥99%.

保险筛 Safety Sifter



型号 Model	产量 (t/h) Capacity	功率 (kW) Power
SQLB700	10-50	11
SQLB900	40-80	22

- 欧洲技术, SEW齿轮减速机直联传动, SKF轴承;
- 采用溜槽喂料方式, 结构简单, 产量大;
- 齿轮减速机直联传动, 噪音低, 寿命长;
- 可根据物料特征选配适宜的筛网, 以达到最佳的清理效果;

· 主要适用于预混料、浓缩料等混合后团块状粉料的打散及除杂。
 · European technology, SEW gear reducer direct drive, SKF bearing;
 · Adopt chute feeding method, simple structure and large output;
 · The gear reducer is directly connected to drive, with low noise and long service life;
 · The appropriate sieve can be selected according to the material characteristics to achieve the best cleaning effect;
 · It is mainly suitable for dispersing and removing impurities of agglomerated pow.

永磁筒
Magnet Sleeve



型号 Model	产量 (t/h) Capacity	功率 (kW) Power
TCXT20	20-30	/
TCXT25	30-50	/
TCXT30	50-80	/
TCXT40	80-120	/

·主要用于分离原料中的磁性金属夹杂物,适用饲料厂、粮油加工厂等的除铁作业;
·磁芯采用稀土永磁材料制作,磁感应强度达6000高斯以上,除铁效率≥99.5%;
·不锈钢筒体,结构紧凑。

·It is mainly used to separate magnetic metal inclusions in raw materials, and is suitable for iron removal in feed factories, grain and oil processing plants, etc;
·The magnetic core is made of ferrite material, the magnetic induction intensity is above 6000 gauss, and the iron removal efficiency is ≥99%;
·Stainless steel cylinder, compact structure.

滚筒式磁选器
Drum Magnetic Separator



型号 Model	产量 (t/h) Capacity	功率 (kW) Power
DFRT-500/650	10-30	0.37
DFRT-500/1220	20-60	0.37

·SEW减速机, SKF轴承, 在线除铁, 无需人工定时清理磁铁和铁杂;
·不锈钢制作, 表面抛光处理;
·场强度达6000高斯, 除铁效果好, 适合于除铁要求高的场合, 特别适合特种水产饲料及面粉厂的使用。

·SEW reducer, SKF bearing, online iron removal, no need to manually clean up magnets and iron impurities;
·Made of stainless steel, surface polished;
·The magnetic field strength reaches 6000 gauss, and the iron removal effect is good. It is suitable for occasions with high requirements for iron removal, especially for the use of special aquatic feed and flour mills.

叶轮式逆流冷却器

Impeller Type Counterflow Cooler



型号 Model	产量 (t/h) Capacity	功率 (kW) Power
SKLY16×16 (3m³)	4-6	1.1+0.55
SKLY20×20 (5m³)	10-12	1.1+0.55
SKLY22×22 (6m³)	12-15	1.1+0.55
SKLY24×24 (8m³)	15-22	1.5+0.55
SKLY26×26 (10m³)	22-25	1.5+0.75
SKLY28×28 (12m³)	20-30	1.5+0.75
SKLY32×32 (15m³)	25-35	2.2+0.75+1.5

- SEW减速机、SKF轴承；
- 新型叶轮式排料结构，动作柔和，对物料无损伤，排料干净，换产时无需人工清理；
- 可适用于颗粒料、粉料的冷却作业，冷却风和物料相向流动，使颗粒顺向逐步冷却；
- 内设可调锥形散料机构，布料均匀，还可设置旋转匀料机构（选配）使冷却仓内料层高度一致，冷却效果好；
- 顶部为不锈钢材质，可有效防止湿气在设备顶部聚集导致的快速腐蚀，使用寿命更长；
- 仓体为八角形设计，无死角。
- SEW gear reducer, SKF bearing;
- The new impeller type discharge structure, soft action, no damage to the material, clean discharge, no need for manual cleaning when changing production;
- It can be applied to the cooling operation of granular feed and powder feed. The cooling air and the feed flow in opposite directions, so that the particles are gradually cooled in the forward direction;
- It is equipped with an adjustable conical bulking feed mechanism to ensure uniform distribution, and a rotating screeding mechanism (optional) can also be set to make the height of the feed layer in the cooling bin consistent and the cooling;
- The top is made of stainless steel, which can effectively prevent the rapid corrosion caused by the accumulation of moisture on the top of the equipment, and has a longer service life;
- The silo body is octagonal design without dead angle.

翻板式冷却器

Flap Type Cooler



型号 Model	产量 (t/h) Capacity	功率 (kW) Power
SKLB16×16 (2.5m³)	4-6	0.55+1.5
SKLB20×20 (5m³)	10-12	0.55+1.5
SKLB22×22 (7m³)	12-15	0.55+1.5
SKLB24×24 (8m³)	15-22	1.1+1.1+1.5
SKLB26×26 (10m³)	22-25	1.1+1.5+1.5
SKLB28×28 (10m³)	22-25	1.1+1.5+1.5
SKLB28×28 (12m³)	20-30	1.1+1.5+1.5
SKLB32×32 (15m³)	25-35	1.1+1.5+1.5

- ABB电机、SKF轴承；
- 采用柔性液压摆动式翻板卸料机构，排料流畅、干净，换产时无需人工清理；
- 可适用于膨化料、颗粒料、粉料的冷却作业，冷却风和物料相向流动，使颗粒顺向逐步冷却；
- 内设可调锥形散料机构，布料均匀，还可设置旋转匀料机构（选配）使冷却仓内料层高度一致，冷却效果好；
- 顶部为不锈钢材质，可有效防止湿气在设备顶部聚集导致的快速腐蚀，使用寿命更长；
- 仓体为八角形设计，无死角。
- ABB motor, SKF bearing;
- The flexible hydraulic swing type flap discharge mechanism is adopted, the discharge is smooth and clean, and there is no need for manual cleaning when changing production;
- It can be applied to the cooling operation of extruded feed, granular feed and powder feed. The cooling air and the feed flow in opposite directions, so that the particles are gradually cooled in the same direction;
- It is equipped with an adjustable conical bulking feed mechanism to ensure uniform distribution, and a rotating screeding mechanism (optional) can also be set to make the height of the material layer in the cooling bin consistent and the cooling effect is good;
- The top is made of stainless steel, which can effectively prevent the rapid corrosion caused by the accumulation of moisture on the top of the equipment, and has a longer service life;
- The silo body is octagonal design without dead angle.

翻板式夹套稳定器 Slat Jacketed Stabilizer



型号 Model	产量 (t/h) Capacity	功率 (kW) Power
SWDBg16×16	1-5	2.05
SWDBg18×18	2-8	2.05
SWDBg20×20	3-12	2.05
SWDBg22×22	4-15	2.05
SWDBg24×24	5-20	2.05
SWDBg26×26	8-25	2.05

- ABB电机、SKF轴承；
- 适用于水产料的后熟化作业以及在生产猪料时能够有效杀灭非洲猪瘟病毒，在直接蒸汽与间接蒸汽的加热保温下，可保持料温在85℃-105℃之间，保温时间20分钟以上，从而使鱼虾颗粒饲料在水中的稳定时间达到2-5小时；
- 箱体采用夹套式结构，外侧保温岩棉保温，熟化效果好；作业时向夹套内通蒸汽加热保温，还可以通过顶部的环状补汽管向颗粒料饲料里补喷蒸汽，从而提升温度，夹套及管路系统设有安全阀，安全可靠；
- 柔性液压摆式翻板卸料机构，特殊的三角形翻板结构，使得排料阻力小、动作柔和，从而不损伤饲料，且排料顺畅不积料，无需人工清理；
- 与物料接触部位为不锈钢材质，使用寿命更长。

- ABB motor, SKF bearing;
- It is suitable for post-curing operation of aquatic products and can effectively kill African swine fever virus in the production of pig feed. Under the heating and heat preservation of direct steam and indirect steam, the temperature of the feed can be kept between 85°C and 105°C. The time is more than 20 minutes, so that the stable time of fish and shrimp pellet feed in water can reach 2-5 hours;
- The box body adopts a jacket structure, the outer side is insulated by rock wool, and the curing effect is good; during operation, steam is passed into the jacket for heating and heat preservation, and steam can also be injected into the pellet feed through the annular steam supply pipe at the top. In order to increase the temperature, the jacket and pipeline system are equipped with safety valves, which are safe and reliable;
- The flexible hydraulic swing flap discharge mechanism and the special triangular flap structure make the discharge resistance small and the action soft, so as not to damage the feed, and the discharge is smooth without accumulation, and no manual cleaning is required;
- The parts in contact with the material are made of stainless steel, which has a longer service life.

破碎机 Crumbler



型号 Model	产量 (t/h) Capacity	功率 (kW) Power
SSLG20×110	6-8	11+1.1
SSLG20×140	8-12	15+1.1
SSLG20×170	15-22	18.5+1.1

- ABB电机，SEW减速机，SKF轴承；
- 三辊结构，上辊为定量喂料辊，下部对辊为破碎辊，喂料辊可以变频控制喂料量，确保将颗粒料均匀送入辊子，同时可以可靠的调节两辊之间的间距，以满足不同粒径的产品，并且生产过程中可检测产品粒度；
- 破碎辊采用冷硬合金铸造，对辊采用快辊和慢辊两种转速，根据破碎的原料特性及所需要的破碎粒度，选用合适的破碎齿形和齿距(粗齿或细齿)，由于破碎辊可以重复加工成波纹状或槽形，并且受到螺旋弹簧的保护而不易被损坏，因此使用寿命非常长。
- ABB motor, SEW reducer, SKF bearing;
- Three-roller structure, the upper roller is a quantitative feeding roller, and the lower pair of rollers is a crushing roller. The feeding roller can control the feeding amount by frequency conversion to ensure that the pellets are evenly fed into the rollers, and at the same time, it can be reliably adjusted between the two rollers. Spacing to meet products of different particle sizes, and the particle size of the product can be detected during the production process;
- The crushing roller is cast by chilled alloy, and the opposite roller adopts two speeds of fast roller and slow roller. According to the characteristics of the crushed raw materials and the required crushing particle size, the appropriate crushing tooth shape and pitch (coarse tooth or fine tooth) are selected. , Since the crushing roller can be repeatedly processed into a corrugated or grooved shape, and is protected by a coil spring, it is not easy to be damaged, so the service life is very long.

虾料破碎机 Shrimp Feed Crambler



型号 Model	产量 (t/h) Capacity	功率 (kW) Power
SSLG20×110X	3-8	11+1.1
SSLG20×140X	4-12	15+1.1
SSLG20×170X	5-20	18.5+1.1

- ABB电机, SEW减速机, SKF轴承;
- 三辊结构, 上辊为定量喂料辊, 下部对辊为破碎辊, 喂料辊可以变频控制喂料量, 确保将颗粒料均匀送入辊子, 同时可以可靠的调节两辊之间的间距, 以满足不同粒径的产品, 并且生产过程中可检测产品粒度;
- 破碎辊采用冷硬合金铸造, 对辊采用快辊和慢辊两种转速, 根据破碎的原料特性及所需要的破碎粒度, 选用合适的破碎齿形和齿距(粗齿或细齿), 由于破碎辊可以重复加工成波纹状或槽形, 并且受到螺旋弹簧的保护而不易被损坏, 因此使用寿命非常长。
- ABB motor, SEW reducer, SKF bearing;
- Three-roller structure, the upper roller is a quantitative feeding roller, and the lower pair of rollers is a crushing roller. The feeding roller can control the feeding amount by frequency conversion to ensure that the pellets are evenly fed into the rollers, and at the same time, it can be reliably adjusted between the two rollers. Spacing to meet products of different particle sizes, and the particle size of the product can be detected during the production process;
- The crushing roller is cast by chilled alloy, and the opposite roller adopts two speeds of fast roller and slow roller. According to the characteristics of the crushed raw materials and the required crushing particle size, the appropriate crushing tooth shape and pitch (coarse tooth or fine tooth) are selected. Since the crushing roller can be repeatedly processed into a corrugated or grooved shape, and is protected by a coil spring, it is not easy to be damaged, so the service life is very long.

回转分级筛 振动分级筛 Gyro-grading Sifter & Oscillating Grading Sifter

回转分级筛 Gyro-Grading Sifter



- ABB电机、SKF轴承;
- 广泛用于饲料厂各种物料的筛选、分级;
- 组合圆周、椭圆、直线三种运动方式, 筛理效果好;
- 筛船驱动采用皮带传动, 偏重平衡, 噪声低;
- 加强型机座, 保证设备运转更平稳;
- 出料端的支撑可采用玻璃纤维弹性支撑, 柔性好, 不易断裂, 寿命长;
- 筛体可实现悬吊式和落地支撑式, 安装方便;
- ROAST 弹性支撑机构, 费用另计。
- ABB motors, SKF bearings;
- Widely used in the screening and grading of various materials in feed factories;
- Combining three movement modes of circle, ellipse and straight line, the screening effect is good;
- The drive of the sifter adopts belt drive, which is balanced and has low noise;
- The reinforced machine base ensures the smoother operation of the equipment;
- The support of the discharge end can be supported by glass fiber elastic, which has good flexibility, is not easy to break, and has a long service life;
- The screen body can realize suspension type and floor support type, which is easy to install;
- ROAST elastic support mechanism, the cost is calculated separately.

型号 Model	产量 (t/h) Capacity	功率 (kW) Power
SFJH80×2C	粉Powder4-6	2.2
SFJH80×2C	粒Pellet5-8	3
SFJH80×2C	粉Powder6-9	2.2
SFJH80×2C	粒Pellet8-10	2.2
SFJH80×2C		3
SFJH80×2C	粉Powder10-13	3
SFJH80×2C	粒Pellet10-15	3
SFJH80×2C		3
SFJH80×2C	粉Powder9-12	3
SFJH80×2C	粒Pellet13-20	3
SFJH80×2C		4
SFJH80×2C	粉Powder10-12	4
SFJH80×2C	粒Pellet15-18	5.5
SFJH80×2C	粉Powder13-18,	4
SFJH80×2C	粒Pellet20-25	4
SFJH80×2C		5.5
SFJH80×2C	粉Powder15-18	5.5
SFJH80×2C	粒Pellet22-25	5.5
SFJH80×2C		5.5

抽屉式回转分级筛

Drawer Type Gyro-grading Sifter



- ABB电机、SKF轴承；
- 广泛用于饲料厂各种物料的筛选、分级；
- 组合圆周、椭圆、直线三种运动方式，筛理效果好；
- 筛框从侧面像抽屉般的插入、压紧、一个人即可完成筛网更换；
- 筛体驱动采用皮带传动，偏重平衡，噪声低；
- 加强型机座，保证设备运转更平稳；
- 出料端的支撑采用进口ROAST 弹性支撑机构，安全可靠，寿命长；
- 筛体可实现悬吊式和落地支撑式，安装方便。
- ABB motors, SKF bearings;
- Widely used in the screening and grading of various materials in feed factories;
- Combining three movement modes of circle, ellipse and straight line, the screening effect is good;
- The sieve frame can be inserted and pressed like a drawer from the side, and the screen replacement can be completed by one person;
- The drive of the sifter adopts belt drive, which is balanced and has low noise;
- The reinforced machine base ensures the smoother operation of the equipment;
- The support of the discharge end adopts imported ROAST elastic support mechanism, which is safe and reliable and has a long service life;
- The screen body can be suspended or floor-supported, which is easy to install.

型号 Model	产量 (t/h) Capacity	功率 (kW) Power
SFJHc100 x2C	8-10	3
SFJHc100 x3C	8-10	3
SFJHc120 x2C	粉Powder10-13 粒pellet10-15	3
SFJHc120 x3C	粉Powder10-13 粒Pellet10-15	3
SFJHc140 x2C	粉Powder15-18 粒Pellet15-22	4
SFJHc140 x3C	粉Powder15-18 粒Pellet15-22	4
SFJHc160 x2C	粉Powder20-25 粒Pellet22-30	5.5
SFJHc160 x3C	粉Powder20-25 粒Pellet22-30	5.5

振动分级筛

Oscillating Grading Sifter



型号 Model	产量 (t/h) Capacity	功率 (kW) Power
SFJZ80x1	4-8	0.2x2
SFJZ100x1	8-15	0.4x2
SFJZ120x1	10-20	0.55x2

振动电机传动，噪音低，运转平稳，换筛方便。
Driven by vibration motor, low noise, stable operation and easy screen replacement.

重力式包装秤

Gravity Based Packing Machine



型号 Model	结构 Structure	适用范围 Application	额定称量(kg) Rated Weighing	计量精度 Measurement Accuracy	速度(包/小时) Speed (Pack/Hour)
DCS50SZ	单秤, 活门给料, 三级给料方式 Single Scale, Valve Feeding, Three-Level Feeding Method	颗粒料 Granular Material	20 ~ 50kg	±0.1%FS	350 ~ 500
DCS50S-2Z	单秤, 活门给料, 三级给料方式 Single Scale, Valve Feeding, Three-Level Feeding Method	颗粒料 Granular Material	20 ~ 50kg	±0.1%FS	600 ~ 1100

绞龙定量包装秤

Auger Rating Packing Machine



型号 Model	结构 Structure	适用范围 Application	额定称量(kg) Rated Weighing	计量精度 Measurement Accuracy	速度(包/小时) Speed (Pack/Hour)
DCS50HFAZ	单秤, 双绞龙变频给料 (斜绞龙) 三级给料方式 Single Scale, Double Auger Variable Frequency Feeding (Oblique Auger), Three-Level Feeding Method	预混料、粉状料 Premix, Mash Feed	20 ~ 50kg	±0.2%FS	300 ~ 450
DCS50HFA-2Z	单秤, 双绞龙变频给料 (斜绞龙) 三级给料方式 Single Scale, Double Auger Variable Frequency Feeding (Oblique Auger), Three-Level Feeding Method	预混料、粉状料 Premix, Mash Feed	20 ~ 50kg	±0.2%FS	550 ~ 750

皮带定量包装秤

Belt Rating Packing Machine

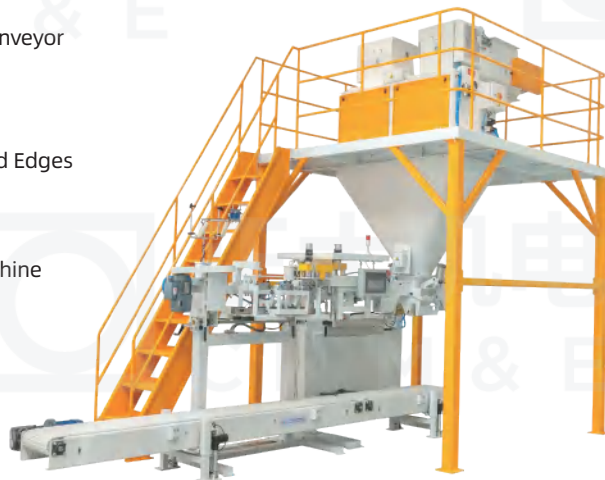


型号 Model	结构 Structure	适用范围 Application	额定称量(kg) Rated Weighing	计量精度 Measurement Accuracy	速度(包/小时) Speed (Pack/Hour)
DCS50PDZ	单秤、皮带变频给料, 三级给料方式 Single Scale, Belt Frequency Conversion Feeding, Three-Level Feeding Method	颗粒或粗粉 Granular Material or Coarse Feed	20 ~ 50kg	优于±0.2%FS	350 ~ 500
DCS50PD-2Z	单秤、皮带变频给料, 三级给料方式 Single Scale, Belt Frequency Conversion Feeding, Three-Level Feeding Method	颗粒或粗粉 Granular Material or Coarse Feed	20 ~ 50kg	优于±0.2%FS	600 ~ 1100

缝包输送机 Bag Sewing Machine and Belt Conveyor

带折边的缝包输送机 Sewing Belt Conveyor with Folded Edges

半自动缝包输送机 Semi-automatic Bag Sewing Machine and Belt Conveyor



流量秤 Flux Scale

结构: 单秤, 活门给料, 三级给料方式
适用范围: 颗粒料、粗粉料
Structure: Single Scale, Valve Feeding, Three-Stage Feeding Method
Application: Granular Material, Coarse Feed



型号 Model	额定称量(kg/包bag) Rated Weighing	计量精度 Measurement Accuracy	速度(包/小时) Speed (Pack/Hour)
LCS30Z	50 ~ 100kg	±0.2%FS	30吨/小时 30 ton/hour
LCS50Z	80 ~ 150kg	±0.2%FS	50吨/小时 50 ton/hour

码垛机 Palletizer



- 包装物形态: 包装袋20kg、40kg;
- 包装内容: 饲料(颗粒、粉料);
- 编织袋规格: 根据客户要求;
- 商标朝向: 向上
- 托盘尺寸: 根据客户需求
- 托盘类型/插入方向: 铁质/长边;
- 码垛层数: 8~10层, 可选择;
- 速度要求: 1000包/小时;
- 含皮带输送系统及相关电控系统。
- Packaging form: packaging bag 20kg, 40kg;
- Package contents: feed(granular, powder);
- woven bag specifications: according to customer needs
- Trademark orientation: up
- Tray type/insertion direction: iron/long side;
- The number of stacking layers: 8~10 layers, optional;
- The number of stacking layers: 8~10 layers, optional;
- Speed requirement: 1000 bags/hour
- Including belt conveying system and related electronic control system.

斗式提升机(普通机座)

Bucket elevator (ordinary base)



- 机头机座为加强型：头轮采用插胶或包胶工艺，头轮为鼓型，增强摩擦力并防止皮带打滑及防跑偏，机头卸料部位衬耐磨衬板，并设有出口调节板和缓冲室，有效减少回料，机头顶部配有泄爆膜，符合安全防爆要求；
- 筒体：采用咬边机的边咬合工艺，强度好，密封性佳；增设平衡管，平衡机体两筒体间压力平衡；大开门型式检修操作门，维修更换畚斗方便；
- 机座：新型轴端密封结构，防止粉尘外泄，采用分体式轴承座结构，保障设备使用可靠性，尾轮为防跑偏轮辐式结构，可增大皮带摩擦力并具有纠偏功能，机座上还可以配备喷吹装置，减少残留和交叉污染；
- 畚斗有超高分子、尼龙、钢制等畚斗可供选择，畚斗有美式畚斗和欧式畚斗两种形式，畚斗带有高强度聚脂带、PVC真芯带可供选择，强度大，寿命长；
- 设备均配有止逆装置，避免因断电引起的堵机问题；
- 可根据用户要求选配速度检测及跑偏报警装置。
- The machine's head & base are reinforced type: the head wheel adopts the process of inserting or lagging, and the head wheel is a drum type to enhance friction and prevent the belt from slipping and deviation. The discharge part of the machine head is lined with a wear-resistant lining, and Equipped with an outlet adjustment plate and a buffer chamber, which can effectively reduce the return of materials, and the top of the machine head is equipped with an explosion-proof membrane, which meets the safety and explosion-proof requirements;
- Cylinder body: The edge occlusion process of the undercut machine is adopted, which has good strength and good sealing performance; a balance pipe is added to balance the pressure balance between the two cylinder bodies of the body; the large-opening type maintenance operation door is convenient for maintenance and replacement of the bucket;
- Machine base: The new shaft end sealing structure prevents dust from leaking out. The split bearing seat structure is adopted to ensure the reliability of the equipment. The tail wheel is an anti-deviation spoke structure, which can increase the friction force of the belt and has the function of correcting deviation. The machine base can also be equipped with a blowing device to reduce residue and cross-contamination;
- There are ultra-polymer, nylon, steel and other buckets to choose from. There are two types of buckets: American bucket and European bucket. Buckets are available with high-strength polyester belt and PVC real core belt. Choice, high strength, long life;
- The equipment is equipped with anti-return device to avoid the problem of machine blockage caused by power failure;
- Speed detection and deviation alarm devices can be selected according to user requirements.

型号 Model	畚斗规格/有效容积 Bucket size/Effective Volume	产量(m ³ /h) Capacity	线速度m/s Linear Speed	最大高度(米) Max Height(m)
TDTG40 ×23	DS2314/1.45L	40	2.2	40
TDTG40 ×28	DS2814/1.87L	55	2.2	40
TDTG50 ×28	DS2816/2.74L	80	2.4	50
TDTG60 ×33	DS3321/3.7L	160	2.6	60
TDTG60 ×38	DS3823/6.7L	200	2.6	60
TDTG80 ×46	DS4621/8.7L	300	2.8	60

自清式斗式提升机

Self-cleaning Bucket Elevator

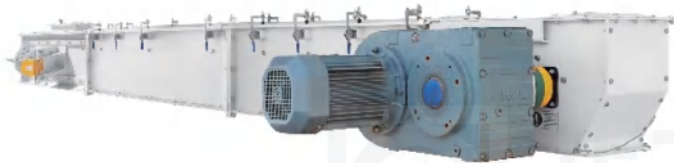


- 机头机座为加强型：头轮采用插胶或包胶工艺，头轮为鼓型，增强摩擦力并防止皮带打滑及防跑偏，机头卸料部位衬耐磨衬板，并设有出口调节板和缓冲室，有效减少回料，机头顶部配有泄爆膜，符合安全防爆要求；
- 筒体：采用咬边机的边咬合工艺，强度好，密封性佳；增设平衡管，平衡机体两筒体间压力平衡；大开门型式检修操作门，维修更换畚斗方便；
- 机座：采用自清式机座，新型轴端密封结构，防止粉尘外泄，采用分体式轴承座结构，保障设备使用可靠性，尾轮为防跑偏轮辐式结构，可增大皮带摩擦力并具有纠偏功能，机座上还可以配备喷吹装置，减少残留和交叉污染；
- 畚斗有超高分子、尼龙、钢制等畚斗可供选择，畚斗有美式畚斗和欧式畚斗两种形式，畚斗带有高强度聚脂带、PVC真芯带可供选择，强度大，寿命长；
- 设备均配有止逆装置，避免因断电引起的堵机问题；
- 可根据用户要求选配速度检测及跑偏报警装置。
- The machine's head & base are reinforced type: the head wheel adopts the process of inserting or lagging, and the head wheel is a drum type to enhance friction and prevent the belt from slipping and deviation. The discharge part of the machine head is lined with a wear-resistant lining, and Equipped with an outlet adjustment plate and a buffer chamber, which can effectively reduce the return of materials, and the top of the machine head is equipped with an explosion-proof membrane, which meets the safety and explosion-proof requirements;
- Machine base: It adopts self-cleaning machine base, new shaft end sealing structure to prevent dust leakage, adopts split bearing seat structure to ensure the reliability of equipment use, and the tail wheel is an anti-deviation spoke structure, which can increase the belt size Friction and correction function, the machine base can also be equipped with a blowing device to reduce residue and cross-contamination;
- Machine base: The new shaft end sealing structure prevents dust from leaking out. The split bearing seat structure is adopted to ensure the reliability of the equipment. The tail wheel is an anti-deviation spoke structure, which can increase the friction force of the belt and has the function of correcting deviation. The machine base can also be equipped with a blowing device to reduce residue and cross-contamination;
- There are ultra-polymer, nylon, steel and other buckets to choose from. There are two types of buckets: American bucket and European bucket. Buckets are available with high-strength polyester belt and PVC real core belt. Choice, high strength, long life;
- The equipment is equipped with anti-return device to avoid the problem of machine blockage caused by power failure;
- Speed detection and deviation alarm devices can be selected according to user requirements.

型号 Model	畚斗规格/有效容积 Bucket size/Effective Volume	产量(m ³ /h) Capacity	线速度m/s Linear Speed	最大高度(米) Max Height(m)
TDTGq40 x23	DS2314/1.45L	40	2.2	40
TDTGq40 x28	DS2814/1.87L	55	2.2	40
TDTGq50 x28	DS2816/2.74L	80	2.4	45
TDTGq60 x33	DS3321/3.7L	160	2.6	50

刮板输送机 Chain Conveyor

刮板输送机 Chain Conveyor



型号 Model	机槽宽度 Width of Feed Conveying Trough	输送产量 (t/h) Transportation capacity	线速度m/s Linear Speed
TGSS20	200	10-30	0.3-0.6
TGSS25	250	30-50	0.3-0.6
TGSS32	320	50-80	0.3-0.75
TGSS42	420	80-120	0.3-0.75
TGSS50	500	200-300	0.75

- 适宜输送粉状、粒状和小块状物料，可以水平或倾斜输送；
- 机头机尾输送链轮外缘包覆有圆弧板，并在输送链条上设有清扫板，确保清洁低残留；
- 输送链轮采用装配剖分式结构，可以快速更换和维护，链轮齿部淬火硬化，提高寿命；
- 轨道采用超高分子耐磨材料，减少振动，增加使用寿命；
- 能多点进料，多点出料，工艺选型及布置较为灵活；
- 设有刮板链条张紧装置、防堵、保护装置。
- It is suitable for conveying powder, granular and small block materials, which can be conveyed horizontally or obliquely;
- The outer edge of the conveyor sprocket at the head and tail is covered with a circular arc plate, and there are scraping cleanser on the conveyor chain to ensure clean and low residue;
- The conveying sprocket adopts an assembled split structure, which can be quickly replaced and maintained, and the sprocket teeth are quenched and hardened to improve the service life;
- The track adopts ultra-high polymer wear-resistant material to reduce vibration and increase service life;
- It can feed materials at multiple points and discharge materials at multiple points, and the process selection and arrangement are more flexible;
- Equipped with scraper chain tensioning device, anti-blocking and protection device.

螺旋输送机 Screw Conveyor

管形螺旋输送机 Tubular Screw Conveyor

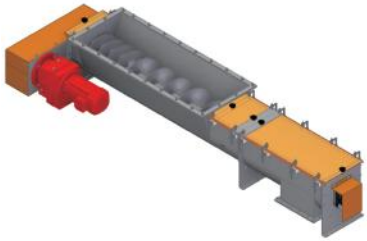


型号 Model	机槽宽度 Width of Feed Conveying Trough
TGSS20	200
TGSS25	250
TGSS32	320
TGSS42	420
TGSS50	500

- 管绞龙的设计极其坚固，延长使用寿命同时降低维护成本；
- 可选配的大容量进料口加渐变螺距可确保储存仓连续卸料，从而防止物料拥堵；
- 系统采用全密封设计，可防止粉尘外逸，从而确保设备周围环境的清洁；
- 采用专用的齿轮箱、密封座、传动花键、吊挂等部件，标准化程度高，互换性好；
- 管形壳体设置有可快速打开的清理门，方便维护和清理；
- 传动系统、进料口、输送端、出料端采用模块化设计，可轻松地根据客户的具体要求进行结构定制。
- 备注：管型绞龙最大长度一般不超过12米。

- The design of the pipe auger is extremely sturdy, prolonging the service life and reducing the maintenance cost;
- The optional large-capacity feeding port and gradual pitch can ensure the continuous discharge of the storage bin, thereby preventing material congestion;
- The system adopts a fully sealed design, which can prevent dust from escaping, thereby ensuring the cleanliness of the surrounding environment of the equipment;
- Adopt special gear box, sealing seat, transmission spline, hanging and other components, with high degree of standardization and good interchangeability;
- The tubular shell is provided with a cleaning door that can be opened quickly, which is convenient for maintenance and cleaning;
- The transmission system, feeding inlet, conveying end and discharging end adopt modular design, which can be easily customized according to the specific requirements of customers.
- Remarks: The maximum length of tubular auger is generally not more than 12 meters.

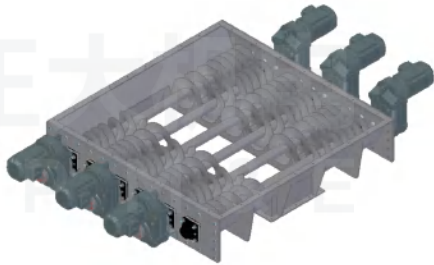
出仓绞龙
Warehouse Release Winch



型号
Model

TLSU160,TLSU200,TLSU250,TLSU320,TLSU400

六联绞龙
Six Way Twisted Dragon

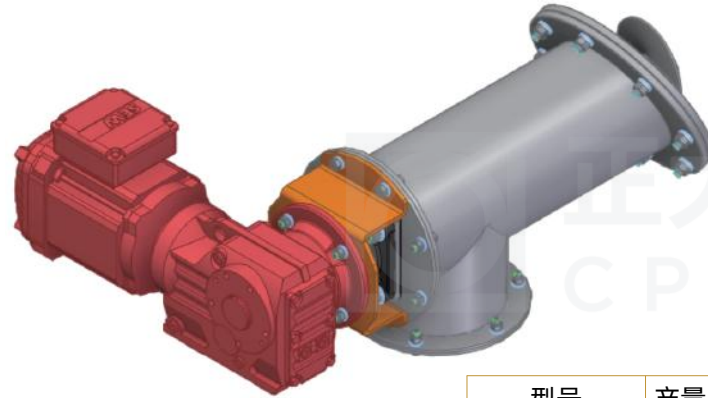


型号 Model	产量 (t/h) Capacity	功率 (kW) Power
TWLL25x6	/	6x3kW

闭风螺旋绞龙
Closed Wind Spiral Twister

型号 Model	产量 (t/h) Capacity	功率 (kW) Power
SWLL20	15	1.1-4
SWLL25	30	1.5-5.5
SWLL32	60	2.2-7.5
SWLL40	120	3-11

取样绞龙
Sampling auger



型号 Model	产量 (t/h) Capacity	功率 (kW) Power
TGSG16	10	0.55

- . 管绞龙的设计极其坚固，延长使用寿命同时降低维护成本；
- . 可选配的大容量进料口加渐变螺距可确保储存仓连续卸料，从而防止物料拥堵。
- . 系统采用全密封设计，可防止粉尘外逸，从而确保设备周围环境的清洁；
- . 采用专用的齿轮箱、密封座、传动花键
- . 吊挂等部件，标准化程度高，互换性好；
- . 管形壳体设置有可快速打开的清理门，方便维护和清理；
- . 传动系统、进料口、输送端、出料端采用模块化设计，可轻松地根据客户的具体要求进行结构定制；
- . 六联绞龙专用于方仓出料，取样绞龙专用于料仓取样。

- . The design of the pipe winch is extremely sturdy, extending its service life while reducing maintenance costs;
- . The optional large capacity feed inlet with gradient pitch ensures continuous unloading of the storage bin, thereby preventing material congestion.
- . The system adopts a fully sealed design, which can prevent dust from escaping and ensure the cleanliness of the surrounding environment of the equipment;
- . Using specialized gearboxes, sealing seats, and transmission splines
- . Hanging and other components have a high degree of standardization and good interchangeability;
- . The tubular shell is equipped with a quick opening cleaning door for easy maintenance and cleaning;
- . The transmission system, feeding port, conveying end, and discharging end adopt modular design, which can be easily customized according to the specific requirements of customers;
- . The six joint winch is dedicated to discharging materials from the square silo, and the sampling winch is dedicated to sampling from the silo.

脉冲除尘器 Impulse Dust Collector

圆形脉冲除尘器（碳钢）

Circular Impulse Dust Collector(Carbon Steel)



- 配压差计、泄爆口；
- 可广泛用于粮食、饲料、面粉轻工、矿山、水泥等行业，除尘效率≥99.9%；
- 碳钢制作，筒体为圆形结构，滤袋为圆虑袋，根据用户需要有超细、耐温、耐湿、抗静电等多种滤袋可供选择，采用大检修门，方便更换虑袋，采用锥体或平底排料结构，切向进风；
- 处理风量大，占地面积小，设备噪音低。
- With differential pressure gauge, explosion vent;
- Can be widely used in grain, feed, flour light industry, mining, cement and other industries, with a dust removal efficiency of ≥ 99.9%;
- Made of carbon steel, the cylinder is a circular structure, and the filter bag is a round filter bag. According to user needs, there are various filter bags such as ultra-fine, temperature-resistant, moisture-resistant and anti-static to choose from. The large access door is used to facilitate the replacement of the filter bag. Adopt cone or flat bottom discharge structure, tangential air intake;
- The amount of air processed is large, the area occupied is small, and the equipment noise is low.

圆形脉冲除尘器（不锈钢）

Circular Impulse Dust Collector(Stainless Steel)



- 配压差计、泄爆口；
- 可广泛用于粮食、饲料、面粉轻工、矿山、水泥等行业，除尘效率≥99.9%；
- 不锈钢制作，筒体为圆形结构，滤袋为圆虑袋，根据用户需要有超细、耐温、耐湿、抗静电等多种滤袋可供选择，采用大检修门，方便更换虑袋，采用锥体或平底排料结构，切向进风；
- 处理风量大，占地面积小，设备噪音低。
- With differential pressure gauge, explosion vent;
- Can be widely used in grain, feed, flour light industry, mining, cement and other industries, with a dust removal efficiency of ≥ 99.9%;
- Made of stainless steel, the cylinder is a circular structure, and the filter bag is a round filter bag. According to user needs, there are various filter bags such as ultra-fine, temperature-resistant, moisture-resistant and anti-static to choose from. The large access door is used to facilitate the replacement of the filter bag. Adopt cone or flat bottom discharge structure, tangential air intake;
- The amount of air processed is large, the area occupied is small, and the equipment noise is low.

方形脉冲除尘器（碳钢）

Square Impulse Dust Collector(Carbon Steel)



- 配压差计、泄爆口；
- 可广泛用于粮食、饲料、面粉轻工、矿山、水泥等行业，除尘效率≥99.9%；
- 碳钢制作，筒体为方形结构，滤袋为圆布袋，根据用户需要有超细、耐温、耐湿、抗静电等多种滤袋可供选择。筒体底部设有防布袋脱落装置；
- 处理风量大，占地面积小，设备噪音低。
- With differential pressure gauge, explosion vent;
- Can be widely used in grain, feed, flour light industry, mining, cement and other industries, with a dust removal efficiency of ≥ 99.9%;
- Made of carbon steel, the cylinder is a square structure, and the filter bag is a round cloth bag. According to user needs, there are various filter bags such as ultra-fine, temperature-resistant, moisture-resistant and anti-static to choose from. The bottom of the cylinder is provided with a device for preventing the bag from falling off;
- The amount of air processed is large, the area occupied is small, and the equipment noise is low.

方形脉冲除尘器（汽车投料口专用）

Square Impulse Dust Collector(Dedicated for Automobile Feeding Port)



- 配压差计、泄爆口；
- 可广泛用于粮食、饲料、面粉轻工、矿山、水泥等行业，除尘效率≥99.9%；
- 汽车投料口专用，筒体为方形结构，滤袋为圆布袋，根据用户需要有超细、耐温、耐湿、抗静电等多种滤袋可供选择。筒体底部设有防布袋脱落装置；
- 处理风量大，占地面积小，设备噪音低。
- With differential pressure gauge, explosion vent;
- Can be widely used in grain, feed, flour light industry, mining, cement and other industries, with a dust removal efficiency of ≥ 99.9%;
- Dedicated for automobile feeding port, the cylinder is a square structure, and the filter bag is a round cloth bag. According to user needs, there are various filter bags such as ultra-fine, temperature-resistant, moisture-resistant and anti-static to choose from. The bottom of the cylinder is provided with a device for preventing the bag from falling off;
- The amount of air processed is large, the area occupied is small, and the equipment noise is low.

关风器 Airlock

关风器 Airlock



- SEW减速机、SKF轴承；
- 广泛用于粮食、饲料、油脂、化工、水泥等行业，能有效防止从排料口吸入空气，是保证卸料器、除尘设备正常工作的必备设备；针对湿气较大场合（如冷却器进料口），有定制不锈钢关风器可供选择。

·SEW reducer, SKF bearing;
·Widely used in grain, feed, grease, chemical, cement and other industries, it can effectively prevent air from being sucked in from the discharge port, and is an essential equipment to ensure the normal operation of the unloader and dust removal equipment; for occasions with high humidity (such as Cooler inlet), custom stainless steel airlock are available.

型号 Model	流量：升/转 Flow: L / R	功率 (kW) Power
TGFZ2.8	2.8	0.55
TGFZ2.8	2.8	0.75
TGFZ5	5	1.1
TGFZ7	7	1.5
TGFZ9	9	1.1
TGFZ16	16	1.5
TGFZ25	25	1.5

防堵关风器

Anti-blocking Airlock

- SEW减速机、SKF轴承；
- 广泛用于粮食、饲料、油脂、化工、水泥等行业，能有效防止从排料口吸入空气，是保证卸料器、除尘设备正常工作的必备设备；防堵关风器适合于关风要求更高的场合，其叶轮和壳体之间的间隙可调。

·SEW reducer, SKF bearing;
·Widely used in grain, feed, grease, chemical, cement and other industries, it can effectively prevent air from being sucked in from the discharge port, and is a necessary equipment to ensure the normal operation of the unloader and dust removal equipment; For occasions with higher wind requirements, the gap between the impeller and the casing can be adjusted.

型号 Model	流量：升/转 Flow: L / R	功率 (kW) Power
GFDWZY-6	6	0.75
GFDWZY-8	8	1.1
GFDWZY-10	10	1.1
GFDWZY-12	12	1.5
GFDWZY-16	16	1.5
GFDWZY-24	24	1.5

气动闸门

Pneumatic Slide Gate



型号 Model	产量 (t/h) Capacity
TZMQ25×25	50
TZMQ32×32	100
TZMQ25×40	150
TZMQ40×40	150
TZMQ50×50	200
TZMQ60×60	300
TZMQ70×70	350
TZMQ80×60	350
TZMQ80×80	350
TZMQ25X60	150
TZMQ32X60	180

- SMC气缸或佛斯托气缸；
- 通过气缸带动闸门板作往复直线运动，来实现闸门开、闭；
- 闸板由托轮支撑，并采用锥形口进料，防止堵料或漏料，启开时也不致向外带料；
- 结构简单，造型美观、操作简便、动作灵敏，性能安全可靠；
- 可根据需要定制进、出料口的尺寸，用以满足不同工艺要求。
- SMC cylinder or Fosto cylinder;
- Drive the gate plate to reciprocate linear motion through the cylinder to realize the gate opening and closing;
- The gate is supported by the supporting wheel, and the material is fed with a tapered mouth to prevent material blocking or leakage, and will not bring material outward when it is opened;
- The structure is simple, the appearance is beautiful, the operation is simple, the action is sensitive, and the performance is safe and reliable;
- The size of the inlet and outlet can be customized according to needs to meet different process requirements.

电动闸门 Electric Valve



型号 Model	产量 (t/h) Capacity
TZMD25×25	50
TZMD32×32	100
TZMD40×40	150
TZMD25×60	150
TZMD32×60	180

- 无锡南合电动推杆，电动推杆电机采用防爆电机；
- 通过电动推杆带动闸门板作往复直线运动，来实现闸门开、闭；
- 闸板由托轮支撑，并采用锥形口进料，防止堵料或漏料，启开时也不致向外带料；
- 结构简单，造型美观、操作简便、动作灵敏，性能安全可靠；
- 可根据需要定制进、出料口的尺寸，用以满足不同工艺要求。
- Wuxi Nanhe electric Putter, electric Putter motor adopts explosion-proof motor;
- Drive the gate plate to reciprocate linear motion through the electric push rod to realize the gate opening and closing;
- The gate is supported by the supporting wheel, and the material is fed with a tapered mouth to prevent material blocking or leakage, and will not bring material outward when it is opened;
- The structure is simple, the appearance is beautiful, the operation is simple, the action is sensitive, and the performance is safe and reliable;
- The size of the inlet and outlet can be customized according to needs to meet different process requirements.

手动闸门 Manual Valve



型号 Model	产量 (t/h) Capacity
TZMS25×25	50
TZMS32×32	100
TZMS40×40	150

- 通过手轮及齿轮齿条操控闸门板作往复直线运动，来实现闸门开、闭；
- 闸板由托轮支撑，并采用锥形口进料，防止堵料或漏料，启开时也不致向外带料；
- 结构简单，造型美观、操作简便、动作灵敏，性能安全可靠；
- 可根据需要定制进、出料口的尺寸，用以满足不同工艺要求。
- The gate plate is controlled by hand wheel and rack and pinion to make reciprocating linear motion to realize gate opening and closing;
- The gate is supported by the supporting wheel, and the material is fed with a tapered mouth to prevent material blocking or leakage, and will not bring material outward when it is opened;
- The structure is simple, the appearance is beautiful, the operation is simple, the action is sensitive, and the performance is safe and reliable;
- The size of the inlet and outlet can be customized according to needs to meet different process requirements.

气动圆弧闸门

Pneumatic Circular Gate



型号 Model	产量 (t/h) Capacity
YZMQ40X40	150
YZMQ50X50	200
YZMQ60X60	300
YZMQ70X70	350

- 配料秤斗下专用闸门；
- 圆弧形闸板结构，密封可靠，不漏料；
- SMC气缸或佛斯托气缸传动，开启快捷，维护方便。
- Special Gate under the batching scale bucket;
- Arc-shaped Gate structure, reliable sealing, no leakage;
- SMC cylinder or Fosto cylinder drive, fast opening and easy maintenance.

气动三通

Pneumatic 2-way



型号 Model	产量 (t/h) Capacity
TBDQ159x60°	20
TBDQ200x60°	30
TBDQ250x60°	50
TBDQ300x60°	100

- 活动翻板采用旋转形式，并采用加厚耐磨材料，寿命长；
- 特殊的密封设计，可有效防止窜料、漏料现象；
- 壳体为装配式结构，方便更换活动翻板，节省使用成本；
- SMC气缸或佛斯托气缸传动。
- The movable flap adopts the form of rotation, and adopts thick wear-resistant material, which has a long service life;
- Special sealing design can effectively prevent material channeling and material leakage;
- The shell is an assembled structure, which is convenient to replace the movable flap and saves the cost of use;
- SMC cylinder or Fosto cylinder cylinder transmission.

手动三通

Manual 2-way

型号 Model	产量 (t/h) Capacity
TBDS159x60	20
TBDS200x60	30
TBDS250x60	50
TBDS300x60	100

电动三通

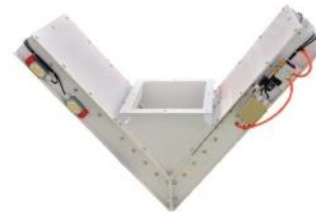
Electric 2-way



型号 Model	产量 (t/h) Capacity
TBDD159x60	20
TBDD200x60	30
TBDD250x60	50
TBDD300x60	100

气动双向分配阀

Pneumatic Two-Way Distribution Gate



型号 Model	产量 (t/h) Capacity
TFPQv32x32	50
TFPQv40x40	100
TFPQv50x50	150

SMC气缸或佛斯托气缸
SMC cylinder or Fosto cylinder

气动单翼碟阀

Pneumatic Single Wing Butterfly Gate



型号 Model	产量 (t/h) Capacity
TDFD φ200	30
TDFD φ250	40
TDFD φ300	50
TDFD φ400	100
TDFD φ500	150
TDFD φ600	200

- 外壳为整体铸铝式阀体结构；
- 阀门采用转动蝶阀结构，阀板采用不锈钢制作；
- 阀板和壳体之间采用丁腈橡胶密封，密封性好，不漏料；
- 采用气动控制，操作方便；

注：WAM产品为同型号的1.5倍。

- The housing is an integral cast aluminum Gate body structure;
- The Gate adopts a rotating butterfly Gate structure, and the Gate plate is made of SUS plate;
- The Gate plate and the shell are sealed with nitrile rubber, which has good sealing performance and no leakage;
- Adopt pneumatic control, easy to operate;

Note: WAM products are 1.5 times of the same model.

手动单翼碟阀

Manual Single Wing Butterfly Gate



型号 Model	产量 (t/h) Capacity
TDFS φ200	30
TDFS φ250	40
TDFS φ300	50
TDFS φ400	100

- 外壳为整体铸铝式阀体结构；
- 阀门采用转动蝶阀结构，阀板采用不锈钢制作；
- 阀板和壳体之间采用丁腈橡胶密封，密封性好，不漏料；
- 采用气动控制，操作方便；

注：WAM产品为同型号的1.5倍。

- The housing is an integral cast aluminum Gate body structure;
- The Gate adopts a rotating butterfly valve structure, and the Gate plate is made of SUS plate;
- The Gate plate and the shell are sealed with nitrile rubber, which has good sealing performance and no leakage;
- Adopt pneumatic control, easy to operate;

Note: WAM products are 1.5 times of the same model.

真空喷涂机

Vacuum Spraying Machine



型号 Model	产量 (t/h) Capacity	功率 (kW) Power
APTCL2000	8-10	15+1.5+0.75
PTCL3000	10-13	18.5+1.5+0.75

- 密封性好，在密闭空间完成油脂喷涂，无油雾损耗；
- 液体添加量范围大 1%-6%（与喷涂前物料质量的比值）；
- 采用立式双螺旋提升机构，配合螺旋护筒，使物料能够在喷涂机内快速循环流动，并配合多组合理配置的大角度压力雾化喷嘴，确保喷涂均匀性变异系数 CV 值≤7%，立式双螺旋提升机构，输送物料柔和，确保物料的破碎率极低。

能够在喷涂机内快速循环流动，并配合多组合理配置的大角度压力雾化喷嘴，确保喷涂均匀性变异系数 CV 值≤7%，立式双螺旋提升机构，输送物料柔和，确保物料的破碎率极低。

- Good sealing performance, complete grease spraying in a closed space without oil mist loss;
- The range of liquid addition is 1% -6% (ratio to the mass of the material before spraying);
- Adopting a vertical double helix lifting mechanism, combined with a helical casing, enables the material to quickly circulate and flow inside the spraying machine, and is equipped with Combine multiple sets of reasonably configured high angle pressure atomizing nozzles to ensure that the coefficient of variation (CV) of spray uniformity is ≤ 7%;
- Vertical double helix lifting mechanism, conveying materials gently, ensuring extremely low material crushing rate.

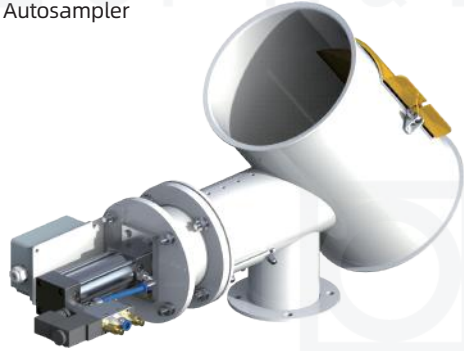
滚筒喷涂机

Drum Spraying Machine

型号 Model	产量 (t/h) Capacity	功率 (kW) Power
SYPG850	2-5	2.2
SYPG1250	5-10	2.2
SYPG3000	10-15	3

- 不锈钢制作，适用于膨化料、颗粒料表面喷涂油脂、维生素、酶制剂等；
- 固液混合均匀，自动化程度高。
- Made of stainless steel, suitable for spraying oil, vitamins, enzyme preparations, etc. on the surface of puffed and granular materials;
- Solid liquid mixing is uniform and highly automated.

自动取样器 Autosampler

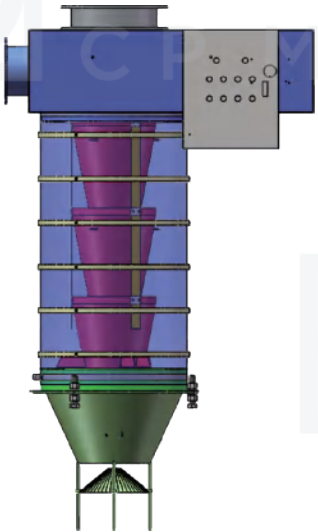


- 广泛应用于饲料生产线上的原料输送管道、混合机、制粒机、包装线等关键节点。
- 通过气动驱动实现全自动、周期性或触发式取样，确保样品代表性，减少人工干预。
- 高效、精准、安全，可实时监控生产质量，降低人为误差。
- Widely used in key nodes such as raw material

conveying pipelines, mixers, granulators, packaging lines, etc. on feed production lines.

- Fully automatic, periodic, or triggered sampling is achieved through pneumatic drive to ensure sample representativeness and reduce manual intervention.
- Efficient, precise, and safe, it can monitor production quality in real-time and reduce human error.

可移动伸缩溜管 Mobile Telescopic Chute



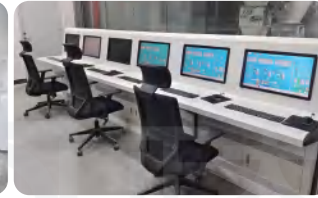
型号 Model	产量 (t/h) Capacity	功率 (kW) Power
ZCRG-100	100	0.55
ZCRG-300	300	0.75
ZCRG-350	350	

- 机头材质为碳钢，壁厚5mm，溜管材质为碳钢，壁厚3mm；
- 正机收缩高度及展开高度可根据工艺情况调整；
- 设备可接风机，溜管末端带均料器；
- 自动化控制，带现场控制箱。
- The material of the machine head is carbon steel with a wall thickness of 5mm, and the material of the chute is carbon steel with a wall thickness of 3mm;
- The contraction height and unfolding height of the main machine can be adjusted according to the process conditions;
- The equipment can be connected to a fan, and the end of the chute is equipped with a homogenizer;
- Automated control with on-site control box.

中控室布置及工作站 Central Control Room Layout and Workstations



常规直电脑桌+显示器
Conventional Straight Computer
Desk+Monitor



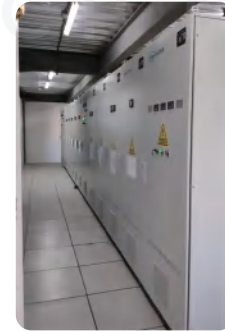
常规直电脑桌+嵌入式显示器
Conventional Straight Computer
Desk+Embedded Display



弧形电脑桌+曲面鱼屏
Curved Computer Desk+Curved
Fish Screen

三款电脑桌式样，可根据需求选择。
Three styles of computer desks can be selected according to your needs.

电控柜配置 Configuration of Electrical Control Cabinet



成套的MCC控制中心
Complete set of MCC control center





内蒙古和林36万吨猪饲料厂
360,000 ton Pig Feed Factory in Helin, Inner Mongolia Autonomous Region



广西钦州大北农饲料科技有限公司
Guangxi Qinzhou DBN Group



生产区画面
Production Area Screen



凯恩格生物科技（宜昌）有限公司
Key Ingredients Biotechnology (Yichang) Co.,Ltd