

因为专业 所以放心
Specialized, So Trusted



猪场装备与工程

PIG FARM EQUIPMENT AND ENGINEERING

做肉类食品全产业链智慧装备和数智化服务的一流供应商

First-Class Supplier of Smart Equipment and Digital Intelligent Services for the Full Industry Chain of Food Products



正大机电
C P M & E



正大机电
C P M & E



正大机电
C P M & E

因为专业 所以放心
Specialized, So Trusted



企业概况 Company Brief



正大机电企业总部大楼
CP M&E Group Headquarters Building



养殖机械制造基地
Animal Husbandry Machinery Manufacturing Base



专用车辆、饲料机械、包材制造基地
Special Vehicle, Feed Machinery and Food Package Manufacturing Base



环模机械、食品机械及环保设备制造基地
Pellet Mill Die, Food Machinery and Environmental Protection Equipment Manufacturing Base

正大机电企业，是专注于为肉类食品产业链上各企业，提供机电装备与工程总包的企业集群。
正大机电企业，是泰国正大集团控股，由泰国、中国、美国、日本企业组成的混合制企业集群。
CP M&E Group is a cluster of enterprises dedicated to providing mechanical and electrical equipment and engineering general contracting for various enterprises in the meat food industry chain.
CP M&E Group is a mixed ownership enterprise cluster controlled by Thailand's CP Group, consisting of companies from Thailand, China, the United States, and Japan.

我们的使命Our Mission

我们为饲料厂/养殖场/食品厂提供智慧的成套装备和EPC交钥匙服务；
我们的数智化装备和服务，能够帮助用户实现经营生产的高效益；
我们致力于促进肉类食品行业向环境友好/资源节约方向快速良性发展。
We provide intelligent complete sets of equipment and EPC turnkey services for feed mill/breeding farms/food factories;
Our digital equipment and services can help users achieve high efficiency in business operations and production;
We are committed to promoting the rapid and sustainable development of the meat industry towards environmental friendliness and resource conservation.

我们的愿景Our Vision

做肉类食品全产业链智慧装备和数智化服务的一流供应商。
First-Class Supplier of Smart Equipment and Digital Intelligent Services for the Full Industry Chain of Food Products.

正大机电企业核心价值观Core Values of CP M&E Group

三利原则（利国、利民、利企业）、快速优质、化繁为简、接受变革、不断创新、正直诚信。
Three Benefits (Benefit the country, Benefit the people, Benefit the Enterprise)
Speed and Quality, Simplification, Accept Change, Innovativeness, Integrity and Honesty.

五大产品特色 Product Features

正大机电企业提供的机电装备与工程总包业务，具备五大特色：全链路配套、技术先进、匠心制造、百年实践经验、数智化赋能。
The electromechanical equipment and engineering general contracting business provided by CP M&E Group has five major features: full-chain solutions, advanced technology, crafted with ingenuity, century-proven expertise, digital intelligence empowerment.

1. 全链路配套 Full-Chain Solutions

提供农牧食品产业链全链路机电装备与工程总包业务，具体服务于饲料厂、养猪场、养鸡场、养虾场、屠宰厂、食品加工厂、饲料运输、畜禽运输、食品运输、粪污处理、臭气处理、水处理，以及智能制造。
We provide comprehensive electromechanical equipment and turnkey engineering services for the entire agri-food industry chain, including: feed mills, pig farms, chicken farms, shrimp farms, slaughterhouses, food processing plants, feed transportation, livestock transportation, food transportation, waste treatment, odor treatment, water treatment, smart manufacturing.

2. 技术先进 Advanced Technology

引进欧美日先进机电产品技术，并结合中国及亚洲客户需求，为客户提供性价比高、寿命周期长、成本低的独有技术产品和工艺，能够给客户带来高收益。
By adopting advanced electromechanical technologies from Europe, America, and Japan, we deliver cost-effective, durable, and low-maintenance technical solutions tailored to Asian clients' needs, maximizing customer profitability.

3. 匠心制造 Crafted with Ingenuity

拥有全球领先的制造基地，匠心精神的长三角技术工人为客户奉献高品质产品，高素质的研发工程师为客户奉献精湛的产品图纸和创新的产线方案。
With world-leading manufacturing bases, The Yangtze River delta technical workers, embodying craftsmanship, are dedicated to delivering high-quality products to customers. Our highly skilled R&D engineers also provide excellent product drawings and innovative production line solutions.

4. 百年实践经验 Century-Proven Expertise

核心团队拥有多年的饲料生产与养殖生产设备现场使用经验，把设备使用中痛点和关切，融入正大机电企业的产品设计和工程施工中，我们提供有灵魂的产品和工程总包服务。
Our core team integrates decades of hands-on experience in feed production and farming operations into product design and engineering services, delivering soulful products and turnkey solutions that address real-world challenges and resonate with our clients' needs.

5. 数智化赋能 Digital Intelligence Empowerment

正大机电企业的数智化专业团队，能够帮助客户将工业1.0、工业2.0、工业3.0的生产场景，提升到工业4.0；我们开发的数智化产品和服务，包括饲料厂智能控制系统CPS、制粒机一键启动、养猪场数字化系统、养殖场巡检机器人等，已经在正大集团和其它头部企业应用，打通全产业链的数据联通，帮助客户创造高价值、高回报。
Our digitalization specialists help customers upgrade their production scenarios from Industry 1.0, Industry 2.0, and Industry 3.0 to Industry 4.0; The digital products and services we have developed, including the intelligent control system CPS for feed mills, one click start for granulators, digital system for pig farms, and inspection robots for breeding farms, have been applied in CP Group and other leading enterprises, connecting the entire industry chain and helping customers create high value and high returns.

目录 Contents

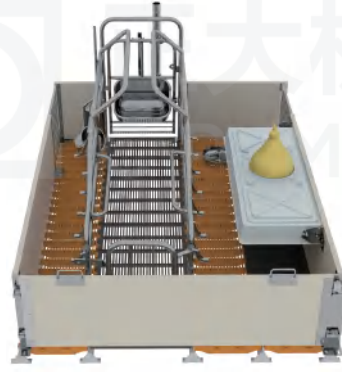
栏位系统 Penning System		喂料系统 Feeding System		转角轮 Angle Wheel	25	排污系统 Removal System	
分娩栏 Delivery Column	01-02	塞盘料线系统 Stopper Tray Line System	13	料线传感器/料塔连接件 Material Line Sensor / Silo Connector	26	虹吸/重力式 Siphon / Gravity	33
定位栏 Positioning Pen	03	料塔疏导器/高料位开关 Tower Dredger / High Level Switch	14	三通下料阀 Three-Way Blanking Valve	26	刮粪板 Manure Scraper	34
保育栏 Nursery Stall	04	料塔连接件/缓冲适配器 Tower Connector/Buffer Adapter	15	蛟龙输送系统 Twisted Dragon Conveyor System	27	电气设备 Electrical Equipment	
公猪大栏 Boar Stall	04	普通料靴/匀料料靴 Common Material Shoe / Uniform Feed Boot	16	变形口 Adapted Hopper	27	电控箱 Electric Control Panel	35
通风系统 Ventilation System		φ60塞盘料线 φ 60 Plug Tray line	17	蛟龙料靴 Auger Feed Boot	28	Ai6000中央报警器 Ai6000 Central Alarm	36
国产玻璃钢 Domestic FRP Fan	05-06	链条/输料管 Chain / Feed Pipe	17	电子饲喂 Electronic Feeding	29	IEC环控器功能特点 Functional Characteristics of IEC Environmental Controller	37
进口玻璃钢风机 Imported FRP Fan	07	转角轮 Feed Corner	18	水线系统 Waterline System		IEC 环境控制器物联网平台 IEC Environmental Controller IoT Platform	38
进口镀锌板风机 Imported Galvanized Sheet Fans	08	透明观察管/料位传感器 Transparent Observation Tube / Material Level Sensor	19	水线前端 Waterline Front End	30	标杆项目 Excellent Project	
电动式吊顶进风窗 Electric Ceiling Air Inlet Window	09	配量器/三通下料口 Gauge / Teea Blanking Port	20	饮水器 Water Dispenser	30		
负压式吊顶进风窗 Negative Pressure Ceiling Air Inlet Window	10	不锈钢双面料槽 Stainless Steel Double-Sided Feed Trough	21	供暖系统 Heating System			
电动侧墙进风窗 Electric Side Wall Air Inlet Window	10	干湿喂料器 Wet and Dry Feeder	22	暖风机 Air Heater	31		
负压式侧墙进风窗 Negative Pressure Side Wall Air Inlet Window	11	φ102塞盘系统 φ 102 Plug Disk System	23	保温灯、电加热板、电地暖 Heat Preservation Lamp,Electric Heating Plate,Electric Floor Heating	32		
卷帘系统 Roller Shutter System	11	驱动器/匀料料靴 Driver / Leveling Shoe	24				
水帘 Cooling Pad	12	链条 Chain	25				

栏位系统 Penning System

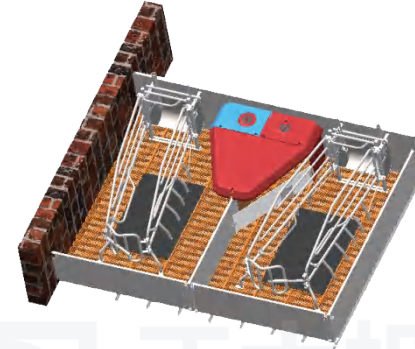
分娩栏 Delivery Column



不可调节
Not Adjustable



可调节
Adjustable



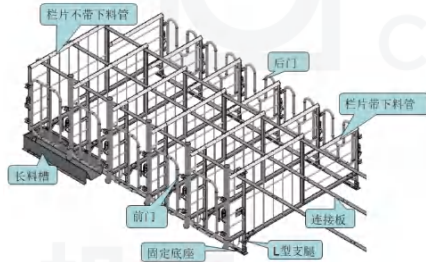
丹式
Dan Style

尺寸 Size	2400*1800
地板分区 Floor Partition	400/600 (母猪铸铁) /800 400/600 (Sow Cast Iron) /800
母猪采食 (两选一) Sow Feeding(one of two)	自由采食器 Free Feeder
	下料管+配量器 Blanking Pipe + Gauge
小猪采食 Piglet Feeding	开食盘 Open Plate
小猪区供暖 Piglet District Heating	保温盖\保温灯+嵌入式加热板 Insulation Cover \ Insulation Lamp + Embedded Heating Plate
	保温盖\保温灯+橡胶垫 Insulation Cover \ Insulation Lamp + Rubber Pad
母猪饮水 Sow Drinking Water	不锈钢饮水碗 Stainless Steel Drinking Bowl
	饮水盆-落地 Drinking Basin - Floor

尺寸 Size	2700*1800
地板分区 Floor Partition	400/800 (母猪400+400铸铁+前后4块母猪塑料地板) /600 400/800 (Sow 400+400 Cast Iron+Front and Rear 4 Sow Plastic Floors) /600
母猪采食 Sow Feeding	下料管+配量器 Blanking Pipe + Gauge
小猪采食 Piglet Feeding	开食盘 Open Plate
小猪区供暖 Piglet District Heating	保温盖\保温灯+橡胶垫 Insulation Cover \ Insulation Lamp + Rubber Pad
母猪饮水 Sow Drinking Water	不锈钢饮水嘴 Stainless Steel Drinking Nozzle
小猪饮水 Piglet Drinking Water	不锈钢饮水碗 Stainless Steel Drinking Bowl

定位栏

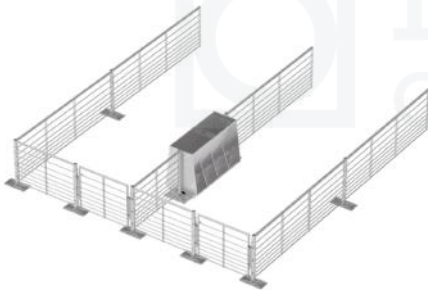
Positioning Pen



- 定位栏有圆管（常用）和角钢两种；
- 长度有2400mm/2300mm/2200mm/2000mm；
- 宽度有700mm/650mm/600mm/560mm；
- 前后门均为圆管式的，碰锁结构；后门U型开口朝向可根据实际需要调整。
- There are two kinds of positioning bars: round tube (commonly used) and angle steel;
- Length: 2400mm/2300mm/2200mm/2000mm;
- The width is 700mm/650mm/600mm/560mm;
- The front and rear doors are of circular tube type with latch structure; The U-shaped opening direction of the rear door can be adjusted according to actual needs.

保育育肥栏

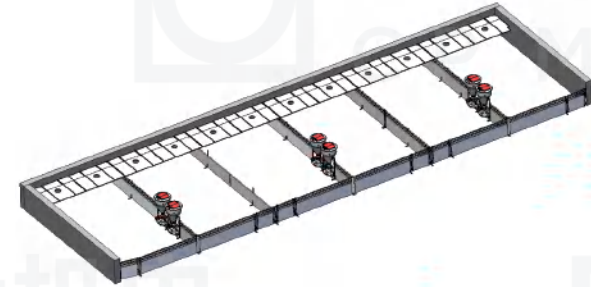
Nursery and Fattening Stall



- 可分保育育肥一体栏和纯育肥栏,纯育肥栏用于饲养育成猪，栏位上圆钢间距较保育育肥一体大；
- 料槽可选不锈钢双面料槽或干湿喂料器；
- 饮水可选水碗或水盆；
- 保温灯、保温盖和橡胶垫选配。
- It can be divided into conservation and fattening integrated column and pure fattening column. The pure fattening column is used to raise adult swines. The spacing of round steel in the column is larger than that of conservation and fattening integrated column;
- The material trough can be stainless steel double-sided material trough or dry and wet feeder;
- Water bowls or basins are available for drinking;
- Selection of heat preservation lamp, heat preservation cover and rubber pad.

保育栏

Nursery Stall



- 围栏为PVC板+方管结构，栏高700mm；
- 栏门可双向打开；
- 保温灯、保温盖和橡胶垫选配，
- 料槽可选用双面料槽或干湿喂料器
- The fence is of pvc plate + square pipe structure, with a height of 700mm;
- The gate can be opened in both directions;
- Selection of heat preservation lamp, heat preservation cover and rubber pad;
- The chute can be double-sided chute or dry and wet feeder.

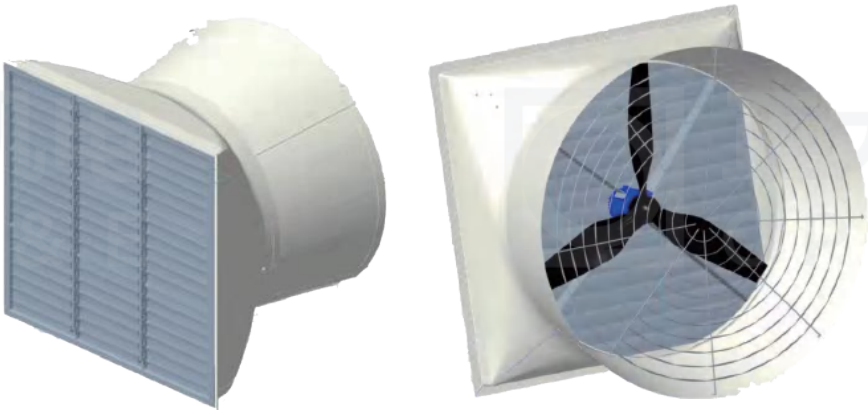
公猪大栏

Boar Stall



- 栏片为圆管焊接，立柱安装；
- 栏门双开；
- 304加厚料槽(1.5mm)，稳固；翻转清洗方便；
- 配水碗，水碗安装在侧栏上，安装方便。
- The fence is welded by circular pipe, and the column is installed;
- Double opening of barrier door;
- 304 thickened material trough(1.5mm), stable; Easy to turn over and clean;
- The water bowl is installed on the side rail for easy installation.

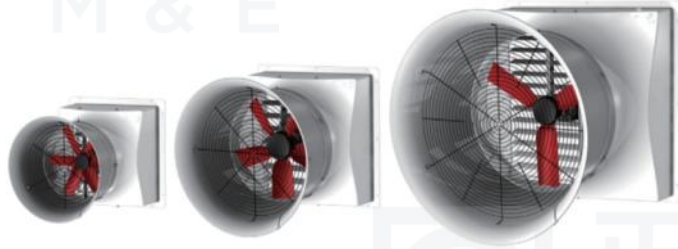
国产玻璃钢风机
Domestic FRP Fan



- 国产玻璃钢风机分为:56"、50"、36"、24"、18"五种型号;
- 玻璃钢框架, 防锈耐腐蚀, 寿命长, 含拢风筒、PVC材质百叶窗;
- 56"、50"风机分带驱和直驱2种形式, 带驱采用弹性张紧装置维持恒定皮带张力;
- 扇叶采用尼龙+玻纤材质;
- 36"、24"、18"风机为直连传动结构, 高效节能。
- Domestic fiberglass fans are divided into five models: 56 ", 50", 36 ", 24", and 18 ";
- Fiberglass frame, rust and corrosion resistant, long service life, including air ducts and PVC louvers;
- The 56 "and 50" fans come in two forms: belt drive and direct drive. The belt drive uses an elastic tensioning device to maintain a constant belt tension;
- The fan blades are made of nylon and fiberglass material;
- The 36 ", 24", and 18 "fans are directly connected transmission structures, which are efficient and energy-saving.

代码 Code	物料名称 Material name	风机外框 尺寸(宽×高) 去除法兰边 尺寸(mm) Fan frame Size (w* h) Remove the Flange EdgeSize (mm)	预留洞口 尺寸(宽×高) Reserved hole opening Size (w* h) (mm)	0Pa	12.5Pa	25Pa	37.5Pa	50Pa	62.5Pa	75Pa	100Pa	100Pa	134Pa
				风量 Air Volume	风量 Air Volume	风量 Air Volume	风量 Air Volume	风量 Air Volume	风量 Air Volume	风量 Air Volume	风量 Air Volume	风量 Air Volume	风量 Air Volume
				(m³/h)	(m³/h)	(m³/h)	(m³/h)	(m³/h)	(m³/h)	(m³/h)	(m³/h)	(m³/h)	(m³/h)
W00078	50玻璃钢风机,未组装MULTIFAN 3叶PG1.35kW塑料百叶, 玻璃钢 框架, 带拢风筒380V整机 50 fiberglass fan, unassembled MULTIFAN 3-blade PG1.35kW plastic louver, fiberglass frame, 380V complete machine with air duct	1574*1634	1585*1645	63300	60300	57600	55100	52300	49800	45600	23400	10100	3400
W00075	36玻璃钢风机,未组装MULTIFAN 3叶PG0.78kW直联玻璃钢框架, 含拢风筒, 塑料百叶, 网罩220V 整机 36 fiberglass fan, unassembled MULTIFAN 3-blade PG0.78kW direct connected fiberglass frame, including air duct, plastic louvers, mesh cover 220V whole machine	1473*1535	1480*1540	55200	52300	49200	46100	42500	36700	24000			
W00076	24玻璃钢风机,未组装5叶 PG0.57kW直联玻璃钢框架, 含拢 风筒, 塑料百叶, 网罩220V整机 24 fiberglass fan, unassembled 5-blade PG0.57kW direct connected fiberglass frame, including air duct, plastic louvers, mesh cover 220V whole machine	1110*1110	1120*1120	22400	21000	19400	17500	11300	7600	4300			
W00814	18玻璃钢风机,未组装6叶 PG0.27kW直联玻璃钢框架, 含拢 风筒, 塑料百叶, 网罩220V整机 18 fiberglass fan, unassembled 6-blade PG0.27kW direct connected fiberglass frame, including air duct, plastic louvers, mesh cover 220V whole machine	843*843	855*855	12800	11800	11000	10300	8800	5300	4300			

进口玻璃钢风机 Imported FRP Fan



- 进口玻璃钢风机分为：54"、50"、36"、24"、18"五种型号；
- 玻璃钢框架，防锈耐腐蚀，寿命长，含拢风筒；
- PG材质扇叶，PVC材质百叶窗；
- 54"、50"风机为皮带驱动，采用弹性张紧装置维持恒定皮带张力；
- 36"、24"、18"风机为直连传动结构，高效节能。
- Imported FRP fans are divided into five types: 54", 50", 36", 24", 18";
- FRP frame, rust proof and corrosion-resistant, long service life, including air duct;
- PG material fan leaf, PVC material shutter;
- 54" and 50" fans are belt driven, and elastic tensioning device is used to maintain constant belt tension;
- 36", 24" and 18" fans are of direct connection transmission structure, which is efficient and energy-saving.

代码 Code	物料名称 Material name	设备尺寸 Size (mm)	预留洞口 尺寸(宽×高) Reserved hole opening Size (width x height) (mm)	0Pa	12Pa	25Pa	37Pa	50Pa	62Pa	75Pa	87Pa	100Pa
				风量 Air Volume (m³/h)	风量 Air Volume (m³/h)	风量 Air Volume (m³/h)	风量 Air Volume (m³/h)	风量 Air Volume (m³/h)	风量 Air Volume (m³/h)	风量 Air Volume (m³/h)	风量 Air Volume (m³/h)	风量 Air Volume (m³/h)
W00077	54玻璃钢风机,未组装MULTIFAN 3叶PG1.35kW玻璃钢框架,含塑料百叶,拢风筒,网罩380整机 54 fiberglass fan, not assembled with MULTIFAN 3-blade PG1.35kW fiberglass frame, including plastic louvers, air duct, mesh cover, 380 whole machine	1610*1610	1625*1625	49500	46450	43300	38400	31800				
W00078	50玻璃钢风机,未组装MULTIFAN 3叶PG1.35kW塑料百叶,玻璃钢框架,带拢风筒380V整机 50 fiberglass fan, unassembled MULTIFAN 3-blade PG1.35kW plastic louver, fiberglass frame, 380V complete machine with air duct	1434*1434	1445*1445	47000	44100	41000	37500	30800	20200	10300		
W00075	36玻璃钢风机,未组装MULTIFAN 3叶PG0.78kW直联玻璃钢框架,含拢风筒,塑料百叶,网罩220V整机 36 fiberglass fan, unassembled MULTIFAN 3-blade PG0.78kW direct connected fiberglass frame, including air duct, plastic louvers, mesh cover 220V whole machine	1148*1148	1160*1160	20700	19400	18000	16500	14800	12600	10400		
W00076	24玻璃钢风机,未组装5叶PG0.57kW直联玻璃钢框架,含拢风筒,塑料百叶,网罩220V整机 24 fiberglass fan, unassembled 5-blade PG0.57kW direct connected fiberglass frame, including air duct, plastic louvers, mesh cover 220V whole machine	781*781	790*790	12100	11400	10800	10200	9400	8300	5600		
W00814	18玻璃钢风机,未组装6叶PG0.27kW直联玻璃钢框架,含拢风筒,塑料百叶,网罩220V整机 18 fiberglass fan, unassembled 6-blade PG0.27kW direct connected fiberglass frame, including air duct, plastic louvers, mesh cover 220V whole machine	594*594	605*605	6900	6600	6300	5900	5500	4600	3500	2500	

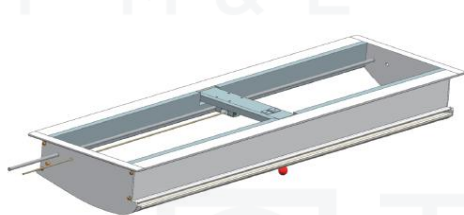
进口镀锌板风机 Imported Galvanized Sheet Fans



- 进口镀锌板风机分为：54"、50"、36"、24"、18"五种型号；
- 镀锌板框架，防锈耐腐蚀，寿命长，含拢风筒；
- PG材质扇叶，镀锌板百叶窗；
- 54"、50"风机为皮带驱动，采用弹性张紧装置维持恒定皮带张力；
- 36"、24"、18"风机为直连传动结构，高效节能。
- Imported galvanized sheet fans are divided into five types: 54", 50", 36", 24", 18";
- Galvanized frame, rust proof and corrosion-resistant, long service life, including air duct;
- PG material fan leaf, Galvanized sheet louvers;
- 54" and 50" fans are belt driven, and elastic tensioning device is used to maintain constant belt tension;
- 36", 24" and 18" fans are of direct connection transmission structure, which is efficient and energy-saving.

代码 Code	物料名称 Material name	设备尺寸 Size (mm)	预留洞口 尺寸(宽×高) Reserved hole opening Size (width x height) (mm)	0Pa	12Pa	25Pa	37Pa	50Pa	62Pa	75Pa	87Pa	100Pa
				风量 Air Volume (m³/h)	风量 Air Volume (m³/h)	风量 Air Volume (m³/h)	风量 Air Volume (m³/h)	风量 Air Volume (m³/h)	风量 Air Volume (m³/h)	风量 Air Volume (m³/h)	风量 Air Volume (m³/h)	风量 Air Volume (m³/h)
W00079	54镀锌板风机,未组装MULTIFAN 3叶PG1.6kW含圆形网罩,镀锌板拢风筒,镀锌板百叶380V整机 Including circular mesh cover, galvanized sheet air duct, galvanized sheet louvers 380V whole machine	1480*1480	1495*1495	54000	51100	48500	45700	42600	38100	33000	25800	15000
W00081	50镀锌板风机,未组装MULTIFAN 3叶PG1.6kW皮带驱动含圆形网罩,镀锌板拢风筒,镀锌板百叶380V整机 50 galvanized sheet fan, unassembled MULTIFAN 3-blade PG1.6kW belt drive with circular mesh cover, galvanized sheet air duct, galvanized louvers 380V complete machine	1382*1382	1395*1395	46100	44000	41500	38700	35500	31600	22200		
W00981	36镀锌板风机,未组装MULTIFAN 3叶PG 0.75kW直联箱式含网罩,镀锌板百叶230V 36 galvanized sheet fan, unassembled MULTIFAN 3-blade PG 0.75kW direct coupled box with mesh cover, galvanized sheet louvers 230V	1005*1005	1035*1025	20000	18900	17900	16900	15700	14550	13100	11350	
W00084	24镀锌板风机,未组装Multifan 5叶PG 0.63kW直联,含网罩不含百叶230V 24 galvanized sheet fan, unassembled Multifan 5-blade PG 0.63kW direct connection, including mesh cover but not louvers 230V	670*670	685*685	12300	11200	10400	8700	8100				

电动式吊顶进风窗 Electric Ceiling Air Inlet Window



单开
Single Opening



双开
Double Opening

- 吊顶进风窗有单开、双开两种形式；
- ABS面板，PVC侧板风叶，SUS304中心支架；
- 温控电脑可实现自动调节通风量，中空保温，保温隔热性能优良；
- 单开吊顶进风窗单侧吹风，多用于保育舍与暂存舍，躺卧区域保温，活动区域吹风交换新鲜空气；双开常用于较宽猪舍，两侧吹风进行空气交换。
- The ceiling air inlet window has two forms: single opening and double opening;
- ABS panel, PVC side plate blade, SUS304 center support;
- The temperature control computer can realize automatic adjustment of ventilation volume, hollow insulation, excellent thermal insulation performance;
- The single ceiling air inlet window is used for blowing air on one side, which is mostly used for nursery and temporary storage. The lying area is insulated, and the active area is blown to exchange fresh air; Double opening is usually used in wide swine houses, and both sides are blown for air exchange.

型号 Model	外形尺寸 External Dimensions	预留洞口 Reserved Hole Opening	备注 Notes
YK1603A	730*560mm	670*480mm	双开 Double Opening
YK1603B	1240*560mm	1180*480mm	双开 Double Opening
YK1603C	860*350mm	800*270mm	备注 Note

负压式吊顶进风窗 Negative Pressure Ceiling Air Inlet Window



- 负压式吊顶进风窗，利用猪舍负压开启，手动关闭；
- 造价相对低廉，常用于对环境要求不高的猪舍。
- Negative pressure ceiling air inlet window, which is opened by negative pressure of swine house and closed manually;
- The cost is relatively low, and it is often used in houses with low environmental requirements.

型号 Model	外形尺寸 External Dimensions	预留洞口 Reserved Hole Opening	备注 Notes
HK006A	790*790*150mm	680*680mm	四面打开 Open on All Sides

电动侧墙进风窗 Electric Side Wall Air Inlet Window

- 电动侧墙进风窗接入温控电脑，可实现自动调节通风量；
- PVC型材+高透明PC抗UV，保温隔热性能优良。
- The electric side wall air inlet window is connected to the temperature control computer to automatically adjust the ventilation volume;
- PVC profile+high transparent PC anti UV, excellent thermal insulation performance.



型号 Model	外形尺寸 External Dimensions	预留洞口 Reserved Hole Opening	备注 Notes
五层	1280*1050mm	1210*960mm	规格可定制 Specifications can be Customized
六层	1080*1210mm	1010*1140mm	
六层	1280*1210mm	1210*1140mm	

负压式侧墙进风窗

Negative Pressure Side Wall Air Inlet Window



- 负压式侧墙进风窗安装有配重，利用猪舍负压自行开启、关闭；
- PVC 型材+高透明PC抗 UV，保温隔热性能优良。
- The negative pressure side wall air inlet window is equipped with a counterweight, which can be opened and closed automatically by using the negative pressure of the pigsty;
- PVC profile + high transparent PC anti UV, excellent thermal insulation performance.

型号 Model	外形尺寸 External Dimensions	预留洞口 Reserved Hole Opening	备注 Notes
单层 Single Layer	1200*390mm	1100*300mm	规格可定制 Specifications can be Customized
单层 Single Layer	1200*670mm	1100*580mm	
四层 Four Layers	1100*900mm	1010*810mm	
四层 Four Layers	1300*900mm	1210*810mm	

卷帘系统

Roller Shutter System

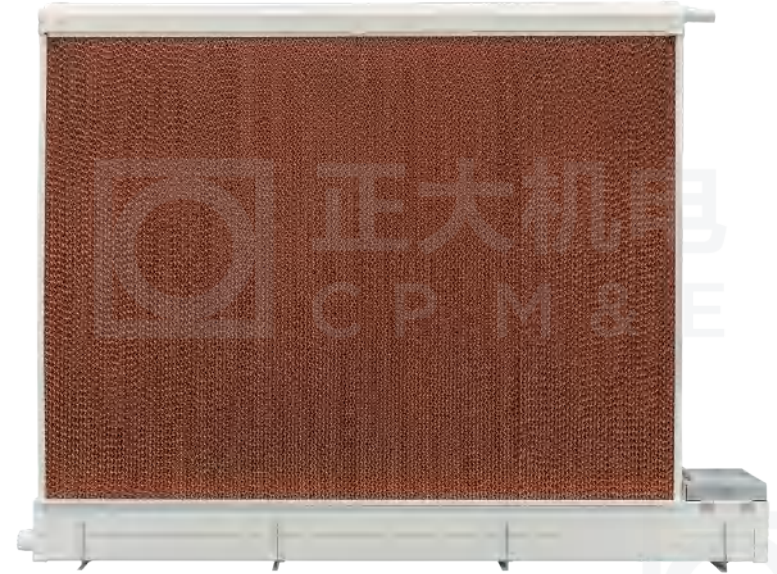
- 卷帘采用重力式下落结构，三侧有封头，确保密封且操作顺畅。
- 使用180g/m²的白色卷帘布，具有抗紫外线和防老化功能，以及不锈钢304提升线。
- 卷帘默认手动操作，但可按需改为电动。
- 内外卷帘都有外挡条，内卷帘有内挡条，内挂时外卷帘也需内挡条。



- Gravity structure with top and side heads for smooth, sealed operation.
- White 180g/m² UV-resistant cloth, 304 stainless steel wire.
- Manually controlled, can be electric.
- Both inner and outer shutters have external strips; inner shutters have internal strips too. Outer shutters need internal strips if hung inside.

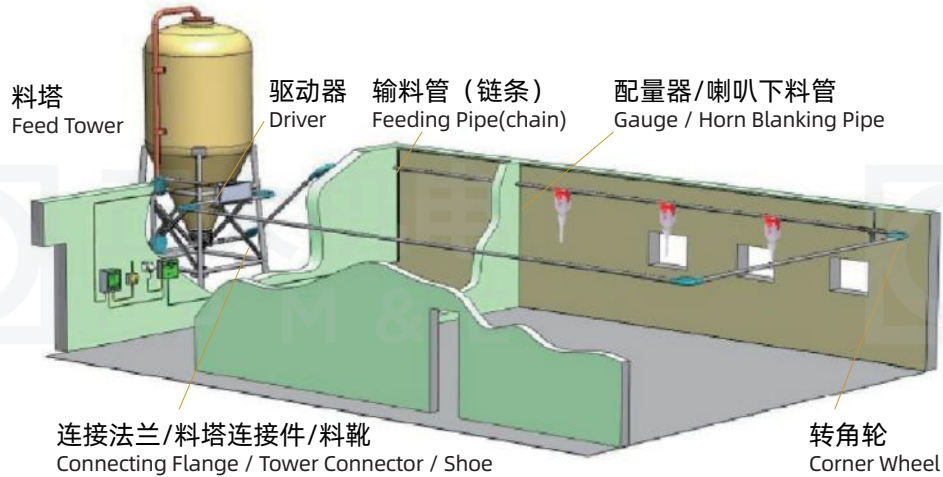
水帘

Cooling Pad



- PVC深水槽水帘相比于铝合金水帘来说成本较高，但却自带水箱减少了土建建设水帘水池的成本；
- 特制的疏水帘能保水均匀的淋湿整个降温湿帘纸，从而保证与空气接触的湿帘表面湿透；
- 水帘纸型号：7060、7090两种型号，默认采用7060纸型，干重约40kg/m³，湿重约100kg/m³；
- 水帘长度根据养殖舍规模可订制。
- The cost of PVC deep water curtain is higher than that of aluminum alloy cooling pad, but its own water tank reduces the cost of civil construction of water curtain pool;
- The special hydrophobic curtain can keep the water evenly wet the whole cooling pad paper, so as to ensure that the surface of the wet curtain in contact with the air is wet;
- Cooling pad paper: 7060 and 7090. By default, 7060 paper is used, and the dry weight is about 40kg/m³, Wet weight: about 100kg/m³;
- The length of the cooling pad can be customized according to the scale of the breeding house.

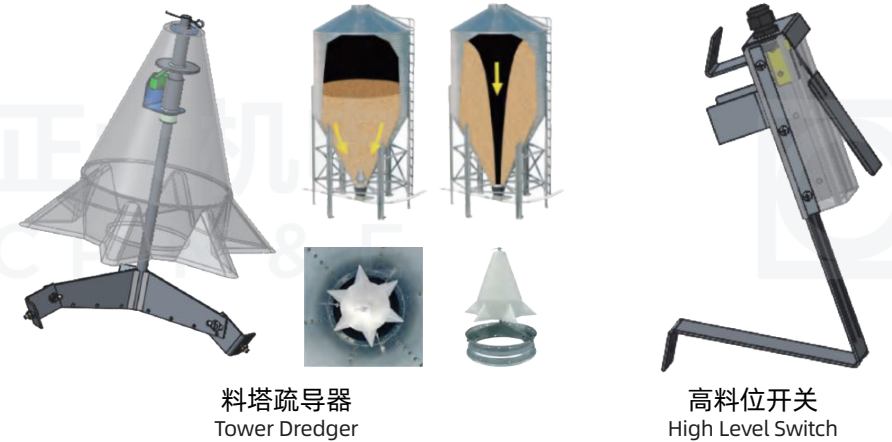
塞盘料线系统 Stopper Tray Line System



塞盘系统由料塔、驱动电机、输料管、链条、下料器和传感器等组成，其主要功能就是把料塔中的饲料输送到各个下料器中，并有料位传感器自动控制电机的开启关闭，达到自动送料的目的。

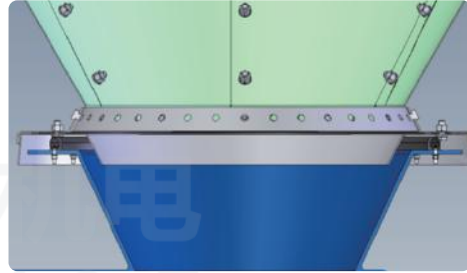
The stopper disk system is composed of a feeding tower, a drive motor, a feeding pipe, a chain, a feeder and a sensor. Its main function is to convey the feed in the feeding tower to each feeder, and a material level sensor automatically controls the opening and closing of the motor to achieve the purpose of automatic feeding.

料塔疏导师/高料位开关 Tower Dredger / High Level Switch



- 料塔疏导师：引导饲料从漏斗流出，防止饲料结块；
- 高料位开关：机械式结构，可靠，欧姆龙品牌传感器；料满时报警提示给打料人员。
- Tower dredger: guide the feed to flow out of the funnel to prevent the feed from caking;
- High level switch: mechanical structure, reliable, Omron brand sensor; When the material is full, give an alarm to the marking personnel.

料塔连接件/缓冲适配器 Tower Connector/Buffer Adapter



料塔下法兰
Lower Flange of Feed Tower

缓冲适配器
Buffer Adapter

橡胶密封条
Rubber Sealing Strip

料塔连接件
Tower Connection

料塔与料塔连接件之间用缓冲适配器+橡胶条软性连接密封，称重更精确。
The buffer adapter + rubber strip is used for soft connection and sealing between the material tower and the material tower connector, so that the weighing is more accurate.

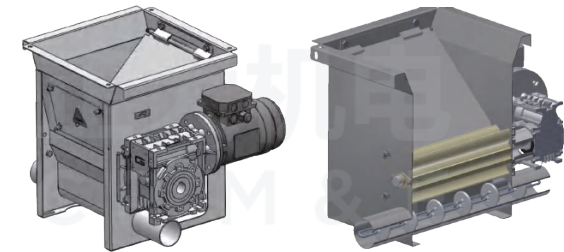
- 304不锈钢材质;
- 含料量调节插片;
- 可关闭/打开下料;
- 上法兰直径根据料塔出料口可定制。
- 304 stainless steel;
- Material content adjusting insert;
- Blanking can be closed / opened;
- The diameter of the upper flange can be customized;
- According to the discharge port of the feed tower.



普通料靴/匀料料靴 Common Material Shoe / Uniform Material Shoe



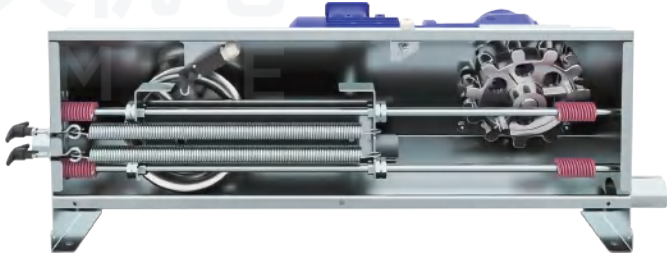
- 普通料靴：304不锈钢材质，设置检修孔；有单管、双管，根据饲喂量选择。
- Common material shoe: 304 stainless steel with manhole; There are single tube and double tube, which are selected according to the feeding amount.



匀料料靴
Uniform Shoe

- 饲料通过电机波轮匀速下到料管内，保证料管内饲料不过载，从而保证系统的稳定性，延长系统的整体使用寿命；
- 转子可以分离结块的饲料，从而避免结块饲料造成料管堵塞。
- The feed is lowered into the feed pipe at a uniform speed through the motor wave wheel to ensure that the feed in the feed pipe is not overloaded, so as to ensure the stability of the system and extend the overall service life of the system;
- The rotor can separate the caked feed, so as to avoid the blockage of the feed pipe caused by the caked feed.

φ60塞盘料线 φ 60 Plug Tray line



- 201不锈钢外壳厚度2.5mm，安装电机处5.5mm；驱动箱尺寸：1180*420*370；
- 含安全保护装置、过载保护装置；意大利诠世电机；1.5kW/380V/50Hz/3PH；
- 驱动轮、从动轮为铸钢材质；
- 链条输送速度22m/min，饲料输送量1000kg/h。
- 201 stainless steel shell is 2.5mm thick, and 5.5mm is installed at the motor; Drive box size: 1180*420*370;
- Including safety protection device and overload protection device; Italian hermeneutic motor;
- The driving wheel and driven wheel are made of cast steel;
- The chain conveying speed is 22m/min, and the feed conveying capacity is 1000kg/h.

链条/输料管 Chain / Feed Pipe



链条
Chain

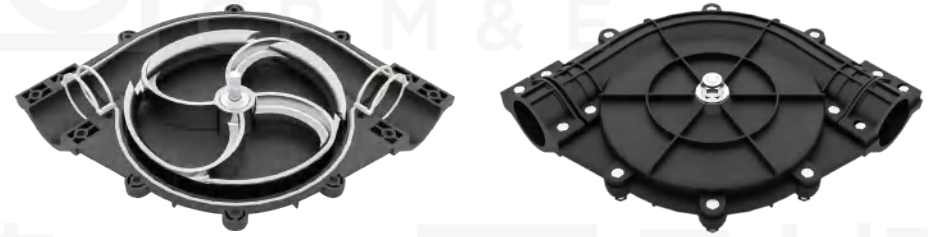


输料管/接头
Feeding Pipe / Joint

- φ5，链条拉力大于30KN、链条材质为20Mn2锰钢，镀锌处理
- 链饼材质为优质PA6，φ45，间距70。
- φ5，The chain tension is greater than 30KN. The chain is made of 20Mn2 manganese steel and galvanized;
- The chain cake is made of high-quality PA6, φ45, spacing 70.

- 厚度1.5mm*φ60镀锌钢管，6000mm一根一端扩口；
- 接头201不锈钢，厚度2.5mm。
- Thickness 1.5mm*φ60 galvanized steel pipe, 6000mm, one end flared;
- Joint 201 stainless steel, 2.5mm thick.

转角轮 Feed Corner



- 尼龙PA66外壳，铸铁转角轮；
- 轴承：哈轴；304不锈钢紧固件；
- 橡胶圈密封，防水等级IP55。
- Nylon PA66 shell, cast iron feed corner; Common material shoe: 304 stainless steel with manhole;
- There are single tube and double tube, which are selected according to the feeding amount.



- 高强尼龙外壳,201不锈钢紧固件；
- 内转角为铸钢材质，强度高，避免其在长期运行过程中变形；
- 中轴为201不锈钢材质，轴承为哈轴；转角轮尺寸：350*350mm。
- High strength nylon shell, 201 stainless steel fasteners;
- The inner corner is made of cast steel with high strength to avoid deformation during long-term operation;
- The middle shaft is made of 201 stainless steel, and the bearing is Harbin shaft; Dimension of feed corner: 350*350mm.

透明观察管/料位传感器

Transparent Observation Tube / Material Level Sensor



料线传感器
Material Line Sensor

配量器/三通下料口

Gauge / Teea Blanking Port



配量器
Gauge



伸缩式下料管
Telescopic Blanking Pipe



拨片式/拉绳式三通下料口
Paddle Type / Pull Rope Type Tee Blanking Port

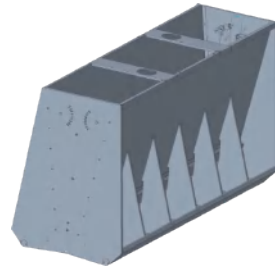
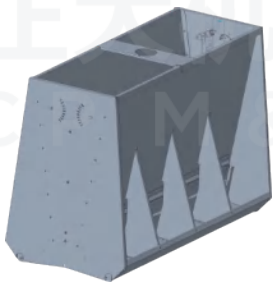


- 透明观察管：PC，聚碳材料，设置在料塔出料端，便于查看输料情况；
- 料线传感器：交流 220V，三芯电容；组装于透明观察管上设置在最末端下料器后端，当最末端下料器打满料后，饲料运行至传感器时，传感器发出信号驱动器关闭料线停止。
- Transparent observation tube: PC, a polycarbonate material, is set at the discharge end of the feeding tower to facilitate viewing the feeding situation;
- Material line sensor: AC 220V, three core capacitance; It is assembled on the transparent observation tube and set at the rear end of the end most feeder. When the end most feeder is full of material and the feed runs to the sensor, the sensor sends a signal to the driver to close the feed line and stop.

- 配量器：PP，容积为8L，通过两侧旋钮调节插板高低，来设置料量大小；配套喇叭下料口与栏位相连，适用于定位栏、分娩栏、公猪栏；
- 三通下料口：PP，分为拨片式与拉绳式；配套伸缩式下料管与料槽、干湿喂料器相连；
- 伸缩式下料管：PVC材质。
- Dosing device: PP, with a volume of 8L. Adjust the height of the plug plate through the knobs on both sides to set the material volume; The feeding opening of the supporting horn is connected with the field, which is applicable to the positioning column, delivery column and boar column;
- Tee blanking port: PP, divided into paddle type and pull rope type; The supporting telescopic blanking pipe is connected with the material trough and the dry and wet feeder;
- Telescopic blanking pipe: PVC material.

不锈钢双面料槽

Stainless Steel Double-Sided Feed Trough



双面8位不锈钢双面料槽
Double Sided 8-Bit Stainless
Steel Double-Sided Feed Trough

双面12位不锈钢双面料槽
Double Sided 12 Position
Stainless Steel Double Sided Feed Trough

- 1.3mm不锈钢304制作；
- 下料调节装置采用弹簧自锁装置，同时料槽下沿口内卷设计，避免猪在采食时候对饲料的浪费；
- 现场拼装式螺栓连接，设计施工灵活，降低运输成本和模块化生产；
- 每个料位320mm，可饲喂6-7头猪吃料。
- 1.3mm stainless steel 304;
- The feeding adjusting device adopts a spring self-locking device, and the lower edge of the feed trough is designed to roll in the mouth, so as to avoid the waste of feed by swines during feeding;
- Field assembled bolt connection, flexible design and construction, reducing transportation cost and modular production;
- Each feed level is 320mm, which can feed 6-7 swines.

干湿喂料器

Wet and Dry Feeder



双盘干湿喂料器
Double Disc Dry and Wet Feeder



单盘干湿喂料器
Single Disc Dry and Wet Feeder

- 底盘304不锈钢，经久耐用；侧栏高度1米；容积100L；
- 桶盖配有预留孔，搭配自动上料系统使用，可通过桶身手柄设置料槽出料量大小；
- 适合保育猪与育成猪，单盘30-50头猪，双盘40-80头猪。
- 304 stainless steel chassis, durable; Side rail height: 1m; Volume: 100L;
- The barrel cover is equipped with a reserved hole, which is used with an automatic feeding system. The discharge volume of the chute can be set through the barrel handle;
- It is suitable for nursing swines and growing swines. There are 30-50 swines in a single plate and 40-80 swines in a double plate.

φ102塞盘系统

φ 102 Plug Disk System

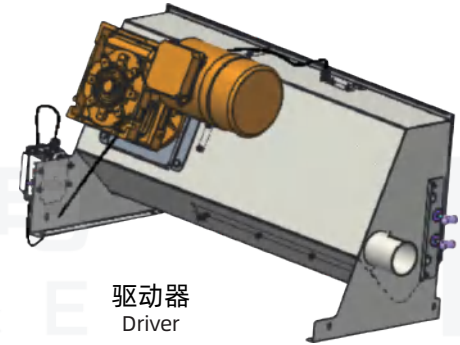


φ102塞盘系统4000kg/h
φ 102 plug disk system 4000kg/h

序号	配件 Accessory	序号	配件 Accessory
01	驱动单元 Drive unit	11	102型料塔连接法兰总成 102 type material tower connecting flange assembly
02	料管 Material pipe	12	透明观察料管 Transparent observation tube
03	料管接头 Material pipe joint	13	108mm软管 108mm hose
04	塞链链条 Chain stuffing chain	14	防雨罩 Rain cover
05	不锈钢转角 Stainless steel corner	15	单支撑 Single support
06	102型下料三通带控制阀 102 type cutting three-way belt control valve	16	双支撑 double support
07	102型料塔连接件 102 type material tower connector	17	检修平台 Maintenance platform
08	料线传感器 Material line sensor	18	塞链控制器 Chain Controller
09	102mm变形斗 102mm deformable bucket	19	饲料引导器带低料位传感器 Feed guide with Low Feed Level Sensor
10	102塞链搭接总成 102 Chain Overlap Assembly	20	高料位开关组 High Level Switch Group

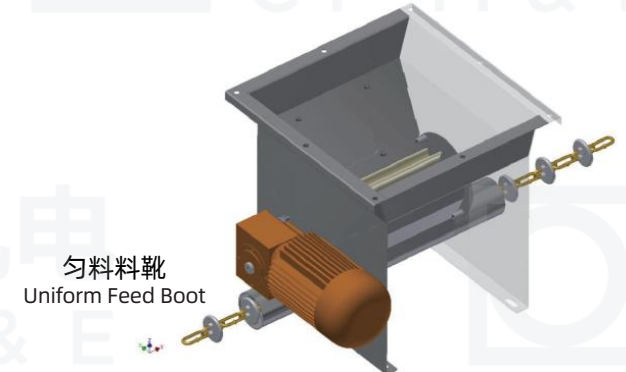
驱动器/匀料料靴

Driver / Uniform Feed Boot



驱动器
Driver

- 304不锈钢;
- 具有断链保护功能和开盖保护;
- 4kW斜齿轮电机, 转速46RPM;
- 输出扭力为812N/M;
- L1440*W515*H710MM。
- 304 stainless steel;
- With chain breaking protection function and cover opening protection;
- 4kW helical gear motor, rotating speed 46RPM;
- The output torque is 812n/m;
- L1440*W515*H710MM.



匀料料靴
Uniform Feed Boot

- 304不锈钢;
- 轴承座: 哈轴;
- 减速电机驱动, 0.37kw, 70RPM, 380V, 防水等级IP55;
- 控制下料速度及关闭/打开下料。
- 304 stainless steel;
- Bearing pedestal: Harbin shaft;
- Reducer motor drive, 0.37kw, 70rpm, 380V, waterproof grade IP55;
- Control the cutting speed and close / open the cutting.

链条 Chain

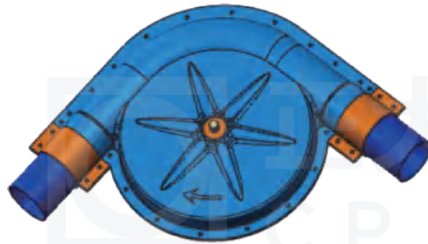


链条
Chains

- 链条规格7*46*9（线径*内长*内宽）；最小破断拉力6t；塞盘材质PA6；直径75，间距92；塞盘位移力不小于10KN，塞盘破坏拉力不小于14KN；
- C形开口环，材料65Mn，2t不变形。
- Chain specification 7*46*9 (wire diameter*inner length*inner width); Minimum breaking force 6T; Plug plate material PA6; Diameter 75, spacing 92; The displacement force of the plug plate shall not be less than 10kN, and the breaking force of the plug plate shall not be less than 14kN;
- C-shaped split ring, material 65Mn, 2T, no deformation.

转角轮 Angle Wheel

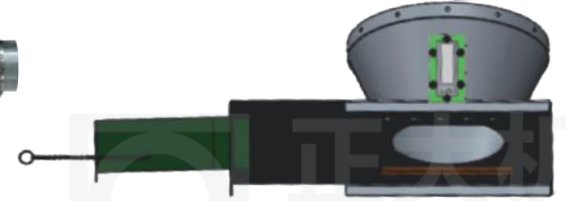
- SS304外壳，铸铁转角轮；
- 轴承：哈轴；304不锈钢紧固件；
- 橡胶圈密封，防水等级IP55。
- SS304 shell, cast iron corner wheel;
- Bearing: Ha shaft; 304 stainless steel fasteners;
- Rubber ring seal, waterproof grade IP55.



料线传感器/料塔连接件 Material Line Sensor / Silo Connector



传感器
Material Line Sensor



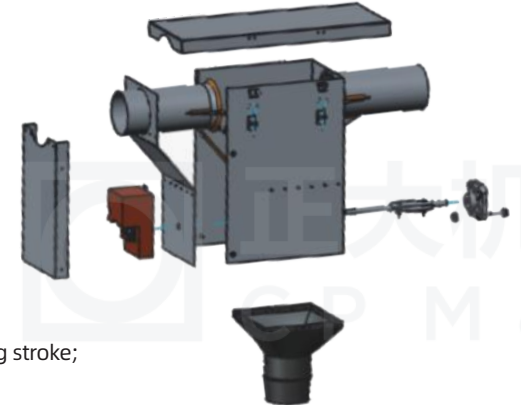
料塔连接件
Silo Connector

- IFM接近传感器；
- 防水等级IP67。
- IFM proximity sensor;
- Waterproof grade IP67.

- 镀锌板Q235BZ275，带观察窗，防水等级IP55；
- 带料量调节插片，能关闭/打开下料。
- Galvanized sheet q235bz275, with observation window, waterproof grade IP55;
- The strip quantity adjustment insert can close / open the blanking.

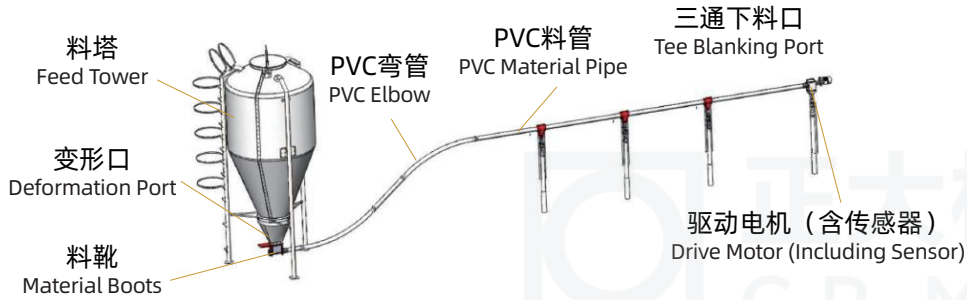
三通下料阀 Three-Way Blanking Valve

- SS304外壳；
- 220v风门阀，可以调节开启行程；
- 落料斗为PP材质。
- SS304 shell;
- 220V air valve, which can adjust the opening stroke;
- The dropping hopper is made of PP.



绞龙输送系统

Twisted Dragon Conveyor System



绞龙输送系统由料塔、驱动电机（含传感器）、PVC料管、PVC弯管、绞龙、下料器等组成，其主要功能就是把料塔中的饲料输送到各个下料器中；利用驱动电机带动螺旋状的绞龙叶片旋转，绞龙推动饲料沿着料管的方向向前移动，直至运送到每个下料口，从而实现饲料输送的目的；当各个下料口饲料投放完毕，最末端的驱动电机传感器发出信号电机关闭绞龙停止。

The auger conveying system is composed of feeding tower, driving motor (including sensor), PVC feeding pipe, PVC elbow, auger, feeder, etc. its main function is to convey the feed in the feeding tower to each feeder; The driving motor is used to drive the spiral auger blade to rotate, and the auger pushes the feed forward along the direction of the feed pipe until it is transported to each feeding port, so as to achieve the purpose of feed conveying; When the feed at each feeding port is finished, the sensor of the drive motor at the end sends a signal that the motor closes and the auger stops.

变形口

Adapted Hopper



180度变形口
180°Adapted Hopper

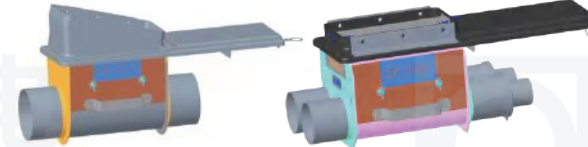
30度变形口
30°Adapted Hopper

双出口变形口
Double Outlet Adapted Hopper

- 变形口为PVC材质，用于连接料塔与料靴；
- 180度变形口常用于多个料塔串联的情况，单个料塔常用30度变形口；
- 双出口变形口用于一个料塔多根绞龙。
- The adapted hopper is made of PVC, which is used to connect the material tower and the material shoe;
- 180 degree adapted hopper is often used in the case of multiple material towers in series, and 30 degree adapted hopper is commonly used for a single material tower;
- The double outlet adapted hopper is used for multiple augers in one feed tower.

绞龙料靴

Auger Feed Boot

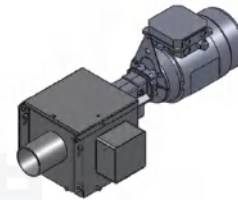


单绞龙料靴
Single Auger Feed Boot

双绞龙料靴
Twisted Auger Feed Boot



- 料靴为镀锌板材质，与PVC管用U型卡连接；
- 单管绞龙料靴对应1个驱动电机，输送量为1300kg/h；
- 双管绞龙料靴对应2个驱动电机，输送量为2600kg/h。
- The material shoe is made of galvanized sheet and connected with PVC pipe with U-shaped clamp;
- Single Auger Feed Boot corresponds to a drive motor with a conveying capacity of 1300kg/h;
- Twisted Auger Feed Boot corresponds to two drive motors, and the conveying capacity is 2600kg/h.



驱动器
Driver



PVC料管
PVC Material Pipe

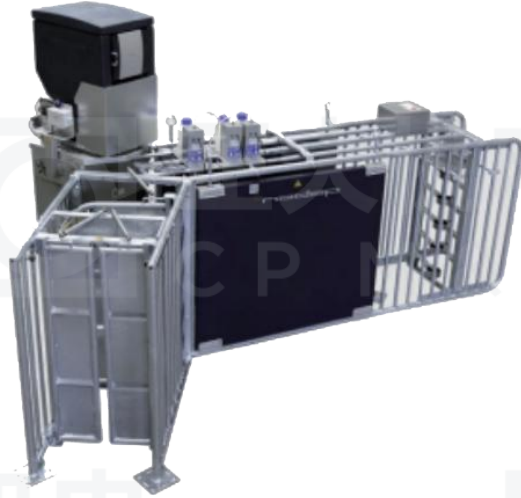


单绞龙料靴
Single auger material boot

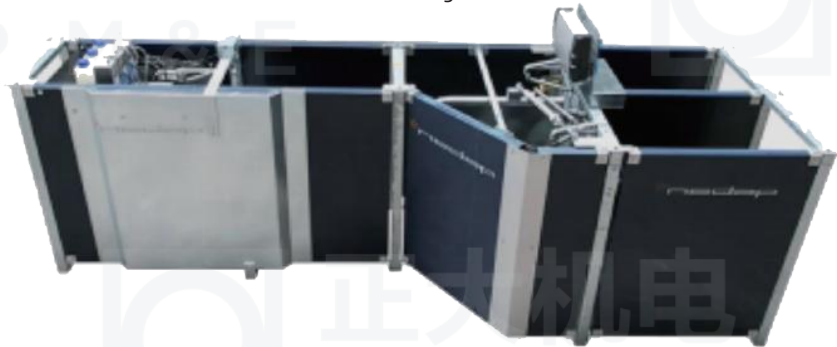
- 驱动器，0.75kW-295RPM，诠世电机；输送量可达1.3吨/小时；
- 料管：高强度PVC料管， $\phi 75 \times 3.6 \times 4000$ mm一端扩口；
- 绞龙：进口绞龙，OD=60.5 ID=36.5 PITCH=40。
- Winch: imported winch, od=60.5, id=36.5, pitch=40.·Driver, 0.75kW-295rpm, hermeneutic motor; The conveying capacity can reach 1.3 tons / hour;
- Driver, 0.75kW-295rpm, hermeneutic motor; The conveying capacity can reach 1.3 tons / hour;
- Material pipe: high strength PVC material pipe, $\phi 75 \times 3.6 \times 4000$ mm flared at one end;

水线系统 Waterline System

电子饲喂 Electronic Feeding



电子饲喂站
Electronic Feeding Station



母猪分离器
Sow Separator

- 电子饲喂站对母猪进行精确饲喂，不仅节约饲料，而且能够更好的对母猪进行管理；
- 母猪分离器与电子饲喂站配合使用，能够自动分离出异常母猪。
- The electronic feeding station accurately feeds sows, which not only saves feed, but also can better manage sows;
- The sow separator is used together with the electronic feeding station to automatically separate abnormal sows.

水线前端 Waterline Front End



- 水线前端拥有DN40与DN25两种型号，根据猪舍的用水量来选型；
- 水线管道一般采用PE材质；
- 电子水表需要根据客服的要求来确定是否配置。
- The front end of the water line has Dn40 and DN25 models, which are selected according to the water consumption of the pig house;
- Water pipeline is generally made of PE;
- The electronic water meter needs to be configured according to the requirements of customer service.

饮水器 Water Dispenser



猪水杯（不锈钢带乳头）
Pig Water Cup
(Stainless Steel With Nipple)

自动水阀
Automatic Water Valve

水嘴
Water Faucet

水盆
Basin

- 水碗型号有： $\phi 200$ （适用母猪）、 $\phi 162$ （适用育肥猪）、 $\phi 140$ （适用断奶猪）、 $\phi 118$ （适用仔猪）；
- 自动水阀：节水环保，需要与长料槽或水盆配合适用，可根据猪只数量选择对应的水盆型号；
- 水嘴：不锈钢，1/2寸。
- Water bowl models are: $\phi 200$ (for sows) $\phi 162$ (for fattening swines) $\phi 140$ (applicable to weaned swines) $\phi 118$ (applicable to piglets);
- Automatic water valve: it is water-saving and environment-friendly. It needs to be matched with the long feed tank or basin. The corresponding basin model can be selected according to the number of swines;
- Nozzle: stainless steel, 1/2 inch.

供暖系统 Heating System

暖风机 Air Heater



型号 Model	最大输入/小时(千瓦) Maximum input/hour (kW)	备注 Notes
AW060	17.6	天然气/液化气 Natural gas/liqefied gas
AW100	29.3	天然气/液化气 Natural gas/liqefied gas
AW250	73.3	天然气/液化气 Natural gas/liqefied gas



型号 Model	材质 Material	最大输入/小时(千瓦) Maximum input/hour (kW)	备注 Notes
225	镀锌板 Galvanized sheet	65.9	天然气/液化气 Natural gas/liqefied gas
	不锈钢 Stainless steel		
250	镀锌板 Galvanized sheet	73.3	天然气/液化气 Natural gas/liqefied gas
	不锈钢 Stainless steel		

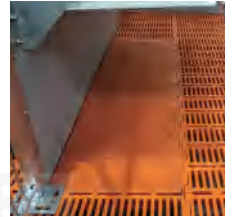
保温灯、电加热板、电地暖

Heat Preservation Lamp, Electric Heating Plate, Electric Floor Heating

- 保温灯由保温灯泡与保温灯罩组成，灯泡有175W与250W选择；
- 橡胶垫厚度通常7mm-8mm，长宽可定制；
- 嵌入式电加热板，通常配套产床；
- 常规可选择橡胶垫+保温灯或电加热板+保温灯。



保温灯
Heat Preservation Lamp

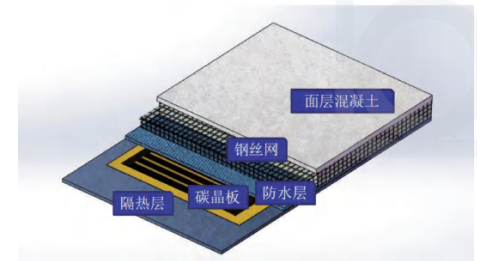


电加热板
Electric Heating Plate

- The heat preservation lamp is composed of heat preservation bulb and heat preservation lamp shade, and the bulb can be selected from 175W and 250W;
- The thickness of rubber pad is usually 7mm-8mm, and the length and width can be customized;
- Embedded electric heating plate, usually equipped with a production bed;
- In general, you can choose rubber pad + heat preservation lamp or electric heating plate + heat preservation lamp.



温控器
Thermostat



- 在交变电流作用下产生交变电场，碳晶中的碳分子与碳分子团在交变电场的引发激励下，在热组件中产生“布朗运动”，相互撞击、摩擦产生热能，以远红外线的方式均匀地辐射出来；
- 优异的电转化热能技术，以波长8-14微米的远红外线均匀地向外辐射，总转化率达到99.8%以上；
- PLC系统全面控制，有效管控区域内空间温度。
- The alternating electric field is generated under the action of alternating current, and the carbon molecules and carbon molecular clusters in the carbon crystal generate "Brownian motion" in the thermal components under the excitation of the alternating electric field. They collide and rub with each other to generate heat energy, which is evenly radiated in the form of far-infrared ray;
- Excellent electric energy to thermal energy technology, with the wavelength of 8-14 microns of far infrared radiation, the total conversion rate reaches more than 99.8%;
- The PLC system is fully controlled to effectively control the space temperature in the area.

排污系统 Blow Down System

虹吸/重力式 Siphon / Gravity



排放塞
Drain Plug



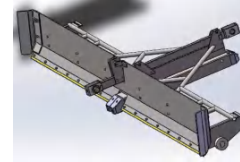
延长件
Extension Piece



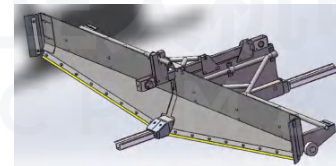
排气阀
Vent Valve

- 弗高排污系统：排气阀+延长件+排放塞依靠重力、负压、连通器原理进行排污。整个管道系统必须为封闭系统，管道末端采用排气阀保证管道内压力比管道外压力小，在管道内气体压力过大时将压力卸出，可排放粘稠的液体；
- 美式排污系统：延长件+排放塞依靠重力进行排污，排放时需要额外冲水将粪污稀释一倍；
- 排放塞与延长件有 $\phi 200$ - $\phi 250$ - $\phi 315$ 三种规格，对应不同的排污面积。
- Fugao blowdown system: exhaust valve + extension piece + discharge plug blowdown is based on the principle of gravity, negative pressure and connector. The whole pipeline system must be a closed system. The exhaust valve is used at the end of the pipeline to ensure that the pressure in the pipeline is smaller than that outside the pipeline. When the gas pressure in the pipeline is too high, the pressure can be discharged to discharge viscous liquid;
- American sewage system: the extension piece + discharge plug shall discharge sewage by gravity, and additional flushing is required to dilute the fecal sewage by twice;
- Drain plug and extension have $\phi 200$ - $\phi 250$ - $\phi 315$ three specifications, corresponding to different sewage discharge areas.

刮粪板 Manure Scraper



轨道式平刮粪板
Track Type Manure Scraper

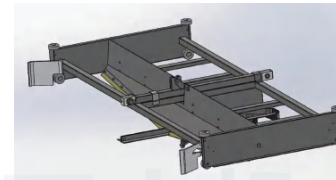


轨道式V型刮粪板
Track Type V-shaped
Manure Scraper

刮粪板 Manure Scraper	规格 Specifications
轨道式平刮板 Track Type Manure Scraper	1000
	1200
	1500
	2100
	2200
轨道式V型刮板 Track Type V-shaped Manure Scraper	2800
	2100
	2200
	2800

轨道式刮粪板粪沟中间设置有轨道，可避免刮粪板走斜问题；最长130米，负载1800Kg-2000Kg。

A track is set in the middle of the track type manure scraper plate fecal ditch, which can avoid the deviation of the manure scraper plate; Maximum length: 130m, load: 1800kg-2000kg.



导尿管式V型刮粪板
Urethral Tube V-Type
Manure Scraper

刮粪板 Manure Scraper	规格 Specifications
导尿管式V型刮粪板 Urethral Tube V-Type Manure Scraper	2100
	2200
	2800

V型刮粪板+导尿管，V型粪沟底部装有导尿管粪尿前期分离，减少后期固体粪污处理量。

V-Type Manure Scraper + urinary catheter. The bottom of the V-shaped fecal ditch is equipped with a urinary catheter to separate feces and urine in the early stage, so as to reduce the amount of solid fecal sewage treatment in the later stage.

电控箱

Electric Control Panel



- 碳钢喷塑箱体，双开门，箱体厚度1.5mm，门板厚度2.0mm，安装板厚度1.5mm，色标RAL7035；
- 带电控箱铭牌，铆钉打孔固定，内容如右图；
- 带智能电表，元器件统一使用施耐德元器件，每组回路均配置马达保护器；
- 每个回路均可进行手/自动控制，报警可连接到声光报警回路。
- Carbon steel spray molded box, double door, box thickness 1.5mm, door panel thickness 2.0mm, installation plate thickness 1.5mm, color code RAL7035;
- The nameplate of the electrified control box is fixed with rivets punched, as shown in the right figure;
- With smart meter, Schneider components are used uniformly, and motor protectors are configured for each group of circuits;
- Each circuit can be manually/automatically controlled, and the alarm can be connected to the sound and light alarm circuit.

Ai6000中央报警器

Ai6000 Central Alarm



- 支持100台环境控制器报警信息收集；
- 220V供电（内置电池，可断电报警）；
- 可接一路报警喇叭输出（可输出12V）；
- 支持报警内容语音输出；
- 支持报警内容自由选择；
- 支持短信和电话报警；
- 支持报警统计及报警日志查询；
- 快捷按键（音量“+”“报警复位”）；
- 支持4G全网通，WIFI及有线网络；
- 支持RS485通讯扩展功能。
- Support the collection of alarm information for 100 environmental controllers;
- 220V power supply (built-in battery, capable of power-off alarm);
- Can be connected to one alarm horn output (capable of outputting 12V);
- Support voice output of alarm content;
- Support free selection of alarm content;
- Support SMS and phone alarm;
- Support alarm statistics and alarm log queries;
- Shortcut buttons (volume "+" and "alarm reset").
- Support 4G all network connectivity, WIFI, and wired networks;
- Support RS485 communication extension function.

环控器

Environmental Controller



- 具有体感温控控制算法、畜禽应激反映保护算法、动态通风调整算法等特点；具备多级档位、PID无级变速控制通风量；
- 支持温度、湿度，二氧化碳、压力等传感器接入参与控制；可扩展连接料塔称重，视频监控，用电量、饮水量等；
- 数据记录本地备份存储不少于30天的容量；电压：230V，50Hz；CE认证，8个模拟输入，2个模拟输出，12个继电器输出。
- Having characteristics such as body temperature control algorithm, animal stress response protection algorithm, and dynamic ventilation adjustment algorithm; Equipped with multi-level gears and PID continuously variable speed control for ventilation volume;
- Support the integration and control of temperature, humidity, carbon dioxide, pressure and other sensors; Expandable connection for tower weighing, video monitoring, electricity consumption, drinking water volume, etc;
- The capacity for local backup storage of data records shall not be less than 30 days; Voltage: 230V, 50Hz; CE certified, with 8 analog inputs, 2 analog outputs, and 12 relay outputs.

IEC环控器功能特点

Functional Characteristics of IEC Environmental Controller

- 电话短信报警 ·Telephone SMS alarm
- 应急通风 ·Emergency ventilation
- 事件溯源 ·Event tracing
- 持续优化 ·Continuous optimization
- 远程设置和诊断 ·Remote settings and diagnostics
- 数据采集 ·Data collection
- 实时监控 ·Real time monitoring
- 数据报表 ·Data report

- 双系统设计，控制系统和人机交互独立设计，更安全；
- 双电源供电设计，提供安全保障；
- 电力级别的电磁兼容设计，抗干扰能力强，稳定性高；
- 继电器功能自由设置，满足各种动力设备配置组合方案需求；
- 自适应通风算法，舍内通风平滑，避免应激；
- 风机轮换算法，有效延长风机寿命；
- 风冷效应算法，畜禽体感温度舒适；
- 远程诊断，能及时解决问题，保证系统的最优运行状态；
- 远程升级，新功能及时更新；
- 扩展性强，满足用户接入各种非标传感器和设备；
- 支持控制器参数批量导入和导出；
- 图示化界面，操作简便，直观；
- 历史数据精确到每分钟，精确查看设备运行效果。
- Dual system for security;
- Dual power for safety;
- EM compatibility for stability;
- Adjustable relay for various setups;
- Adaptive ventilation to reduce stress;
- Fan rotation for longer life;
- Cooling for livestock comfort;
- Remote diagnosis for optimal operation;
- Remote upgrades for new features;
- Scalable for various sensors and devices;
- Supports parameter import/export;
- Graphical interface for easy use;
- Detailed historical data for performance monitoring.

IEC 环境控制器物联网平台

IEC Environmental Controller IoT Platform



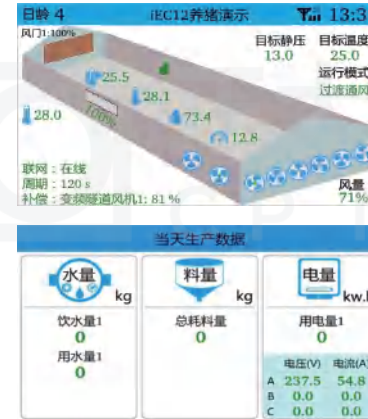
环控PC端平台软件

Environmental Control PC Platform Software



环控PC端平台软件

Environmental Control Mini Program Software



- 集成化管理程序，可查看修改参数，支持报警信息查看、管理报表输出，支持视频监控查看（需对接协议）；
- 模块化设计，可连接电脑、微信小程序进行数据查询，实现4G全网通登录，自设置管理等级及管理权限。
- Integrated management program that can view and modify parameters, support alarm information viewing, manage report output, and support video surveillance viewing (requires protocol connection);
- Modular design, capable of connecting computers and WeChat mini programs for data query, achieving 4G full network login, self setting management level and permissions.

标杆项目 Excellent project



河南杨西6000头种猪场
6, 000 Breeding Pig Farm in Yangxi, Henan Province



广东湛江割山14000育肥十场
14, 000 Fattening Pig Farm in GeShan, Zhanjiang Province



辽宁阜新王府镇12000头育肥一场
12, 000 Fattening Pig Farm in Fuxin, Liaoning Province