

CHAC

C O N T E N T S

01

About CHAC

02

CHAC Strength

03

Product Portfolio

04

Business Footprint

01

About CHAC

Company Introduction

Zhejiang Chuangqi Electric Co., Ltd. (CHAC) is a leading enterprise specializing in low-voltage electrical appliances, integrating R&D, manufacturing, and marketing. Its core products have obtained certifications including CCC , CE , and CB, and are widely exported to over 30 countries and regions such as the European Union, South America, Russia and other CIS countries, the Middle East, and Southeast Asia. CHAC has consistently ranked among the top self-operated exporters of low-voltage electrical products in Wenzhou for multiple years, establishing itself as one of China' s foremost companies in the industry for international sales.

30 years

Manufacturing
Experience

2

Intelligent
Manufacturing
Base

700 M RMB

2024 Revenue

1000+

Employee Scale

60000 m²

Land Occupation Scale



Development History



1995

Zhengli Electric Appliance was established.

The output value in the first year is 2 million yuan, the first pot of gold in the electrical industry.

1998

Chuangqi Electric was established

With an output value of 35 million yuan, it is among the first batch of low-voltage electrical export enterprises.



2007

The Completion of Wenzhou Intelligent Manufacturing Base

With an output value of 350 million yuan, the products are exported to more than 30 countries in Europe, the Americas, etc.

2017

Jiaxing Intelligent Manufacturing Base is completed

Continuously delve into the field of low-voltage electrical appliances



2023

Zhejiang Chuangqi Electric Co., Ltd.

Zhejiang Chuangqi Electric Co., Ltd. has been renamed.

02

CHAC Strength

Accreditations & Awards



Corporate Credentials

- 🏆 National Specialized & Sophisticated SME Pioneer
- 🏆 National High-Tech Enterprise Accreditation
- 🏆 State Green Facility Certification
- 🏆 AEO Advanced Customs Compliance (GAC-Certified)
- 🏆 MIIT-Endorsed Intelligent Manufacturing Scenarios
- 🏆 Zhejiang Provincial Export Brand Leader
- 🏆 Provincial Smart Factory (Digital Workshop)

Certification Architecture

ISO 9001 QMS | ISO 14001 EMS | ISO 45001 OH&S
ISO 50001 EnMS Energy Governance

Global Market Access

CCC • CE • CB • TUV

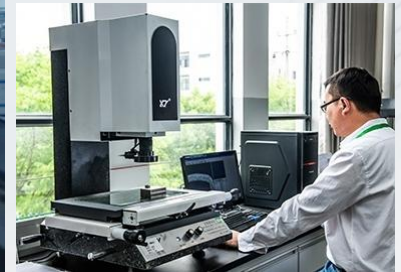
IP Portfolio

300+ Patents (Invention/Utility/Design)



R&D Center

Housing multiple independent laboratories (physical/chemical testing, magnetic testing, 3D measurement) with full capabilities for technical evaluations, including brazing rate testing, salt spray testing, electrical endurance testing, and other critical performance assessments.



Quality Management and Control System

End-to-End Quality Governance

Raw Material Control

- Rigorous vetting via cycle-based evaluations / Compliance covenants established / Closed-loop monitoring enforced
- Advanced sensor arrays deployed / Standardized protocols implemented / Real-time data lineage strengthened

Precision Manufacturing Controls

- ISO-compliant real-time process governance anchored in digital threads
- Critical control points (CCPs) with end-to-end compliance verification
- Error-proofing mechanisms through CCD vision systems & precision gauges

End-user Assurance

- Customer-centric service
- End-to-End quality control

Intelligent Quality Tools

Digital Inspection Equipment



Data Empowerment Platform

- MES system (Real-time process yield monitoring)
- QMS defect dashboard (Pareto root-cause automation)
- SIM shopfloor instant response protocol

Certification Endorsements

- Compliance architecture:
ISO 9001:2015 QMS | ISO 14001:2015 EMS
ISO 45001:2018 OH&S | ISO 50001:2018 EnMS
- Certification benchmarks:
CCC • CE • TUV

Intelligent Manufacturing Base



Miniature Circuit Breaker

90%

Of Manufacturing
Process Automated

85%

Of Production
Machinery Self-developed



MCCB、AC Contactor、Electromagnetic RCCB、
Distribution Box

98%

Parts Self-produced

100M+ poles

MCB Annual Production
Capacity

Smart Manufacturing Center

Based on SCADA plant-level data hub and MES production execution core, building a full-link digital control system from intelligent warehousing (WMS), lean material scheduling (KANBAN) to energy efficiency optimization (EMS), abnormal response (ANDON), and quality traceability (QMS)

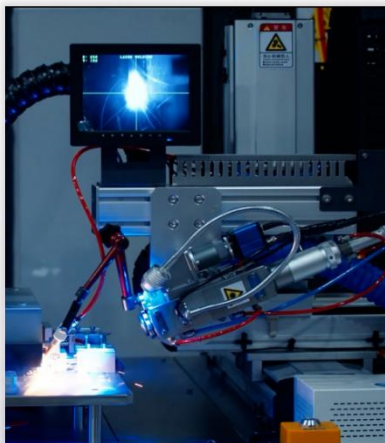


Convergence Drives Precision

Automated precision eradicates human error, Lean flow drives single-piece production,
AI-powered quality achieves zero defects



Automated production
eradicates human error



Lean-optimized
workflows minimize
waste



AI-driven manufacturing
ensures real-time quality

Wenzhou Intelligent Manufacturing Base



Jiaxing Intelligent Manufacturing Base



**Electromagnetic RCCB
Production Line**



**Distribution Cabinet
Assembly Workshop**



**Core Components
Manufacturing Center**



**Component
Manufacturing Hub**



**Mold & Die
Manufacturing Center**

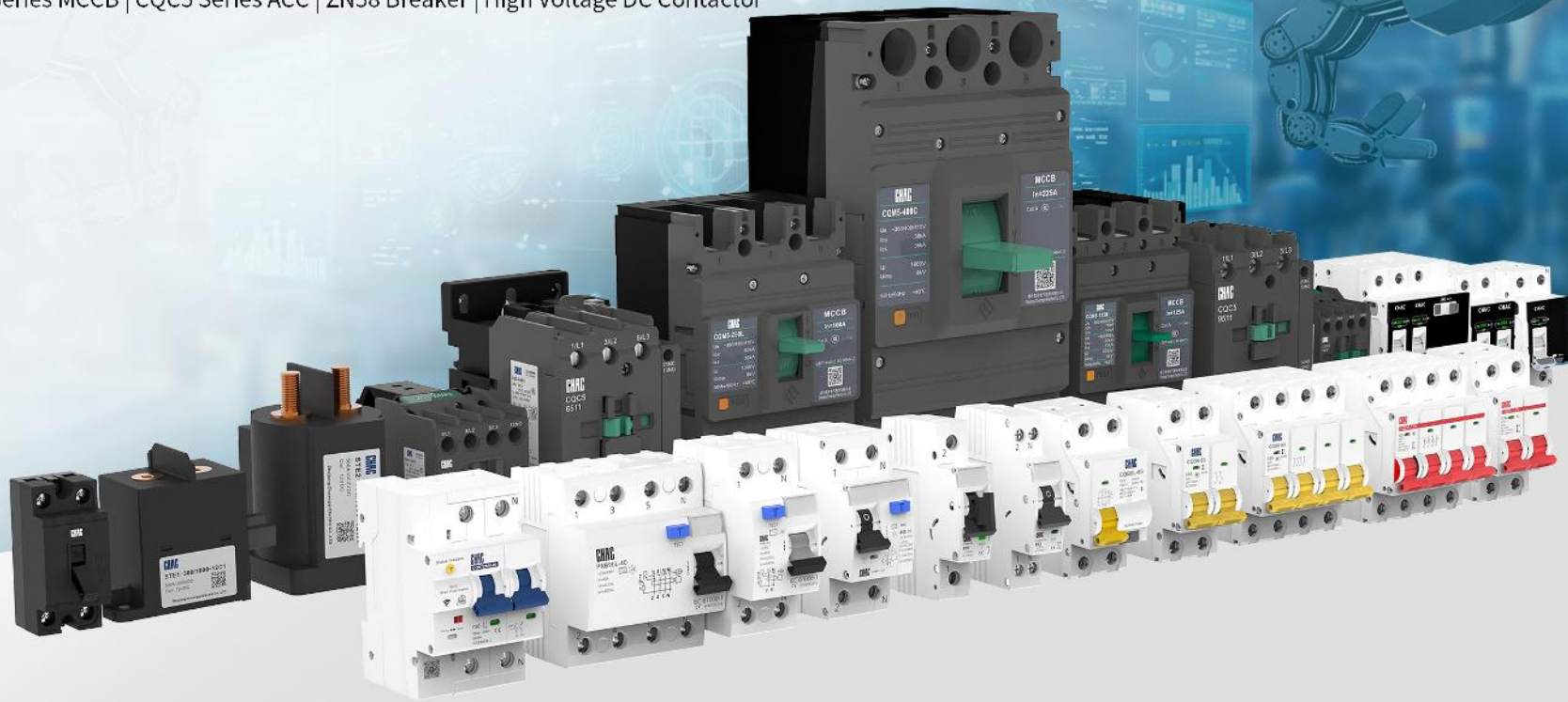


03

Product Portfolio

International Leading Expert In Low-voltage Electrical Lean Manufacturing

CQB3 Series MCB | CQB6 Series MCB | PX9 Series MCB | CQB7ZNP Smart Circuit Breaker
CQM5 Series MCCB | CQC5 Series ACC | ZN58 Breaker | High Voltage DC Contactor



CQB3 Series Miniature Circuit Breaker



CQB3-63

- Wide-frequency compatibility
- High voltage/current
- High breaking capacity
- Triple protection: Overload, short circuit, isolation



CQB3LE-63

- Leakage, overload/short circuit protection
- Wide-domain adaptation capability
- Multi-scenario compatibility



CQB3Ln-63

- Overload/short circuit protection
- Leakage protection
- Detects residual current
- Auto cutoff Prevents shocks



CQB3GQ-80

- Resets post over/undervoltage
- No manual reset
- Fast cutoff on voltage anomalies
- Protects equipment

CQB6 Series Miniature Circuit Breaker



CQB6-63

- Modular compact design
- Easy installation
- Multi-scenario adaptability
- Impact/flame-resistant materials



CQB6L-63

- Multi-protection: leakage, overload/short circuit
- Smart fault diagnosis
- Visual indicators
- Quick fault ID
- Simplified maintenance

PX9 Series Miniature Circuit Breaker



PXB9-63

- High Interruption rating capabilities
- Overload & short circuit protection
- Positive isolation



PX9N-32

- Compact structure and robust design
- Low power consumption
- Easy DIN-Rail extraction
- Overload & short circuit protection



PXB9L-40

- Leakage, short circuit, overload, and isolation protection
- Prevents direct human contact risks
- Safeguards against equipment insulation failure
- For residential/commercial power systems



PXL9-63

- Protects against indirect/direct contact hazards
- Prevents fire risks from insulation faults
- Wide range of tripping currents for housing/commercial /industrial use
- Controls electrical circuits

CQM5 Series Molded Case Circuit Breaker



CQM5 Molded Case Circuit Breaker

- High breaking capacity
- Wide temperature adaptability, normally functioning between -35°C to 70°C.
- Small volume, short arcing, anti-shaking.



CQM5L Series Residual Current Circuit Breaker

- Residual current protection (CBR)
- Overload, short-circuit, and undervoltage protection for circuit and equipment safety
- Enhanced safety design



CQM5E Series Electronic Molded Case Circuit Breaker

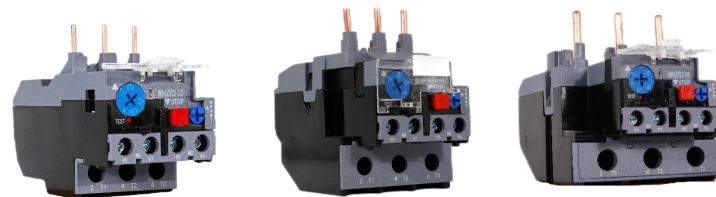
- Wide application range
- Smart communication capability
- Multi-protection functions
- Flexible upgradeability

CQC5 Series AC Contactor CQR1 Series Thermal Overload Relay



CQC5 Series AC Contactor

- Broad voltage compatibility
- High-performance switching
- Compatible with thermal overload relays to form electromagnetic starters, protecting against overload and phase failure
- Designed for high-duty-cycle industrial motor control and circuit protection



CQR1 Series Thermal Overload Relay

- Three-phase bimetallic strip design
- Phase failure protection mechanism
- Integrated tripping mechanism
- Built-in testing function

Region-Specific Circuit Breaker



Black Terminal

- Compact
- Bottom terminal
- 6kA/10kA
- MCB and RCBO



ZN58 Circuit Breaker

- Overload protection



Smart Circuit Breaker

- Remote control
- Scheduled control
- Precision energy metering
- Adjustable current & power limits
- 8 core safety protections

Other



Distribution Box

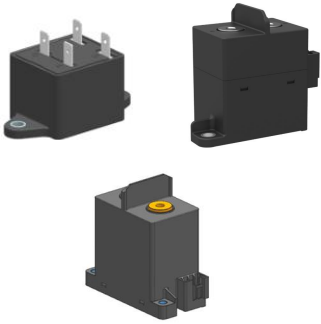
- Neat appearance
- Flame retardant material
- Variable knockout sizes
- Strictly 35mm DIN rail Installation
- Standard Screw Holes



CQMG03 Series Connection Box

- 50Hz AC compatible, 125A/160A rated
- Bus bar and terminal connections in electrical systems
- Industrial-grade design, compact with reliable insulation

High Voltage DC Contactor



**STE1 Square Ceramic
Contactor Series**

- Ceramic sealing; magnetic-hydrogen arc extinction; high reliability
- Precision brazing; ultra-low leakage



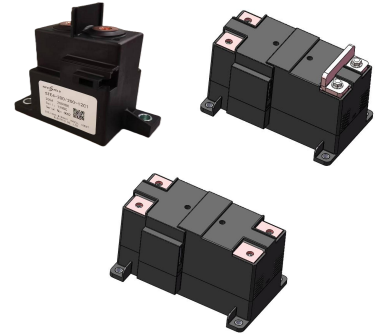
**STE2 Epoxy Contactor
Series**

- Epoxy-sealed structure; magnetic blow-out & nitrogen arc extinction; long lifespan
- Configurations: low/high voltage, auxiliary contacts



**STE3 Round Ceramic
Contactor Series**

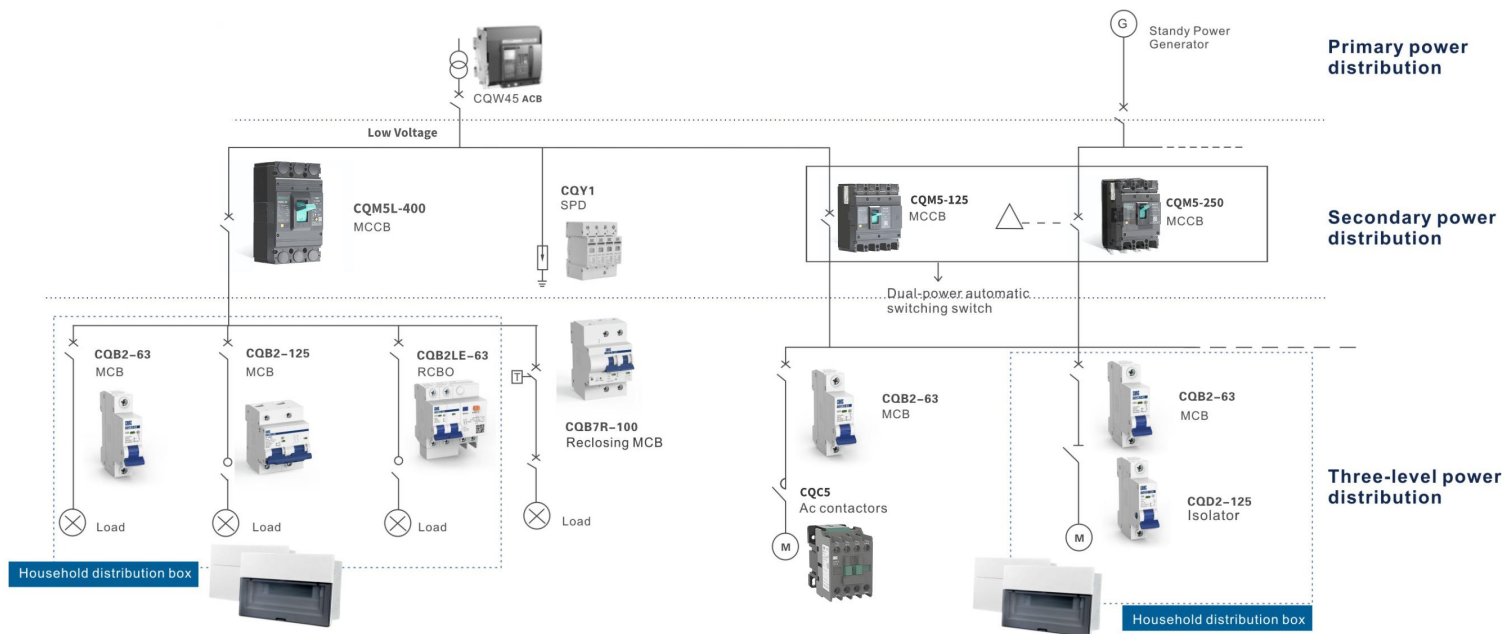
- Ceramic sealing
- Magnetic-hydrogen arc control
- High reliability
- Compact size
- Low/high voltage options



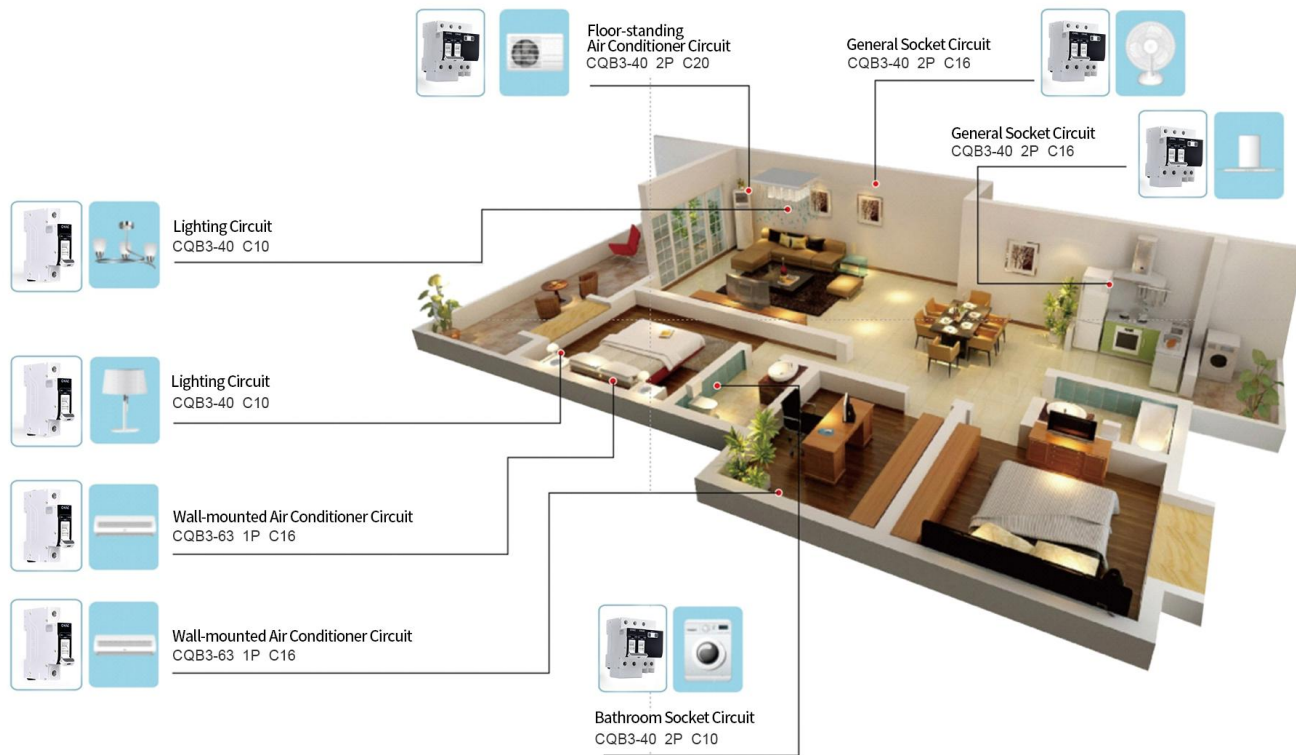
**STE4 Molded Contactor
Series**

- Standard: 1NO | 20–300A | 600–1000VDC | Aux. contacts (≥150A)

CHAC specializes in OEM/ODM solutions for low-voltage power distribution

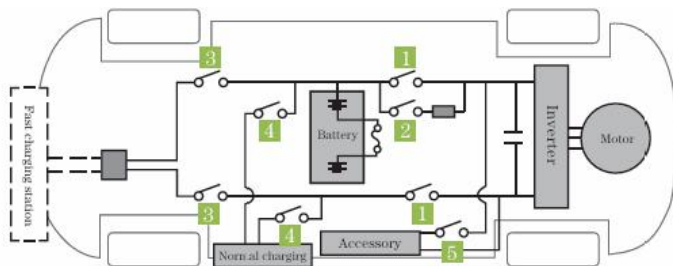


Application Scenarios of Circuit Breakers

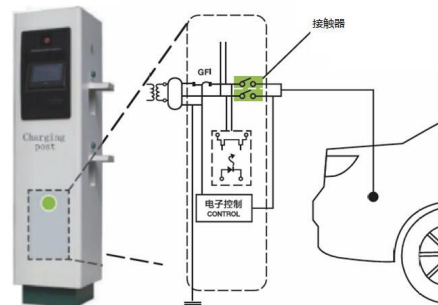


Application Scenarios of High Voltage DC Contactors

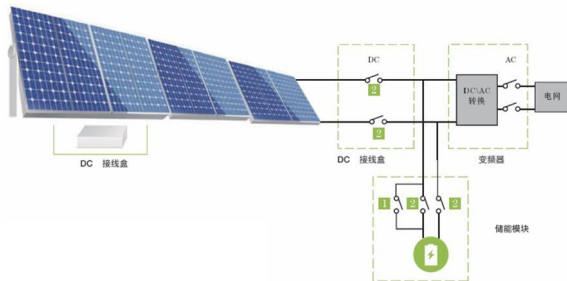
Electric & Hybrid Vehicle Solutions



Charging Station Solutions



Photovoltaic (PV) & Energy Storage Solutions



Containerized Energy Storage Solutions



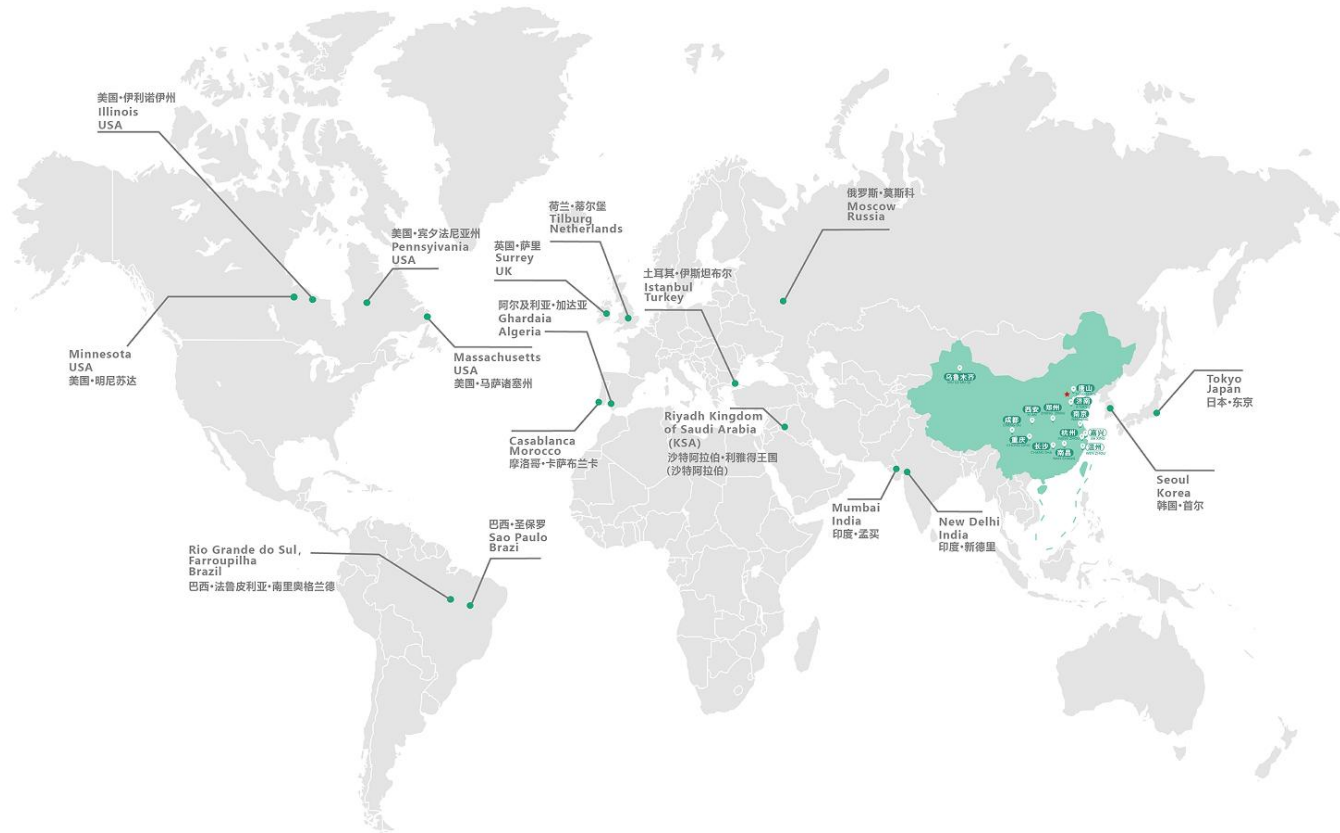
04

Business Footprint

Industry's First Export-Compliant Entity

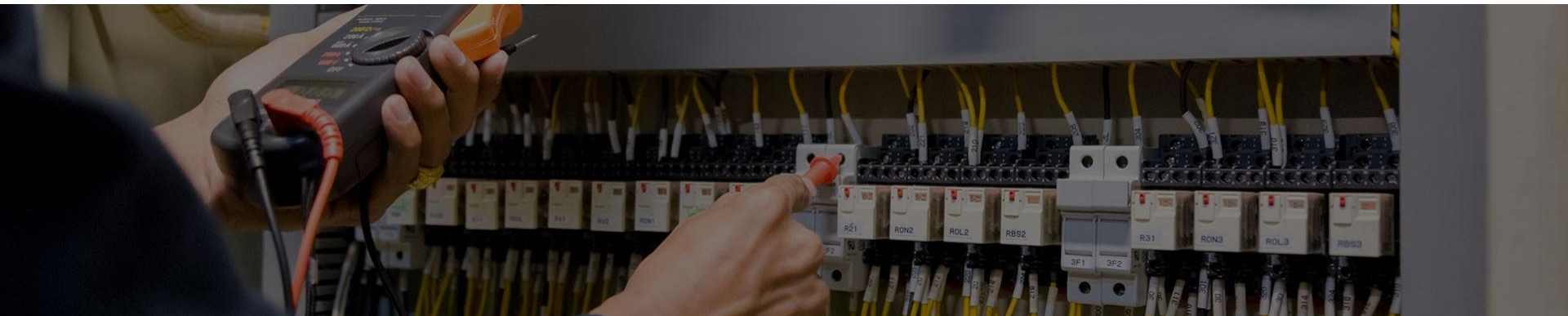
Spanning Asia, North America,
South America, Europe, and Africa

Business Footprint Covers Russia, the U.S., Japan and South Korea, among Others





Thank you for choosing CHAC as your trusted partner in electrical solutions.



Contact Information

National Unified Service Hotline: **0577-27878806**

Wenzhou Base: No. 18, Shahong Road, Beibaixiang Town, Yueqing City, Wenzhou, Zhejiang Province, China

Jiaxing Base: No. 61, Zhengyang West Road, Xiuzhou District, Jiaxing, Zhejiang Province, China



Linkedin



Facebook



Official
Account