

# CHAC

## CQM5 Series Molded Case Circuit Breaker

PRODUCT CATALOG



### ZHEJIANG CHUANGQI ELECTRIC CO.,LTD.

WenzhouBase  
No.18,ShahongRoad,BeibaixiangTown,YueqingCity,Wenzhou,ZhejiangProvince,China

JiaxingBase  
No.61,ZhengyangWestRoad,XiuzhouDistrict,Jiaxing,ZhejiangProvince,China

0577-27878806  
marketing@chac-en.com  
www.chac-electric.com



LINKEDIN



WEBSITE

V2026.03-CHAC-MKT

# CQM5 Series

## Molded case circuit breaker



### Product Features

- Compact design with high breaking capacity (classified into types C, L, H based on performance).
- Short arc-extinguishing distance and strong anti-vibration performance.
- Modular structure for easy installation and maintenance.
- Suitable for both distribution network protection and motor circuit protection.
- Complies with GB/T 14048.2 and IEC 60947-2 standards.

### Operating & Installation Conditions

- Ambient temperature: -5°C to +40°C (average ≤ +35°C within 24 hours).
- Altitude ≤ 2000 meters above sea level.
- Relative humidity ≤ 50% at +40°C.
- Must be mounted vertically with tilt tolerance within ±5°.
- Pollution degree: 3.
- Suitable for protection in distribution and motor circuits.

### Technical Specifications

Model number	CQM5-63			CQM5-100	
Rated current of frame level Inm(A)	63			100	
Rated current In(A),at 40°C	10, 16, 20, 32, 40, 50, 63			10, 16, 20, 32, 40, 50, 63, 80, 100	
Rated operating voltage Ue(V)	AC380/400/415V			AC380/400/415V	
	AC660/690V			AC660/690V	
Rated insulation voltage Ui (V)	1000			1000	
Rated impulse withstand voltage Uimp(KV)	8			8	
Mechanical life	20000			20000	
Electrical life(AC415V)	8000			8000	
Trip mechanisms and protection types	Thermal-magnetic trip			Thermal-magnetic trip	
Selectivity category	A			A	
Number of poles	3P	4P		3P	4P
Breaking capacity designation	L	M	-	C	C
Rated ultimate short-circuit breaking capacity (Icu) (kA)	AC380/400/415V	36	55	55	40
	AC660/690V	/	12	12	12
Rated service short-circuit breaking capacity (Ics) (kA)	AC380/400/415V	36	40	40	30
	AC660/690V	/	10	10	10
Phase spacing (mm)	25			25	
Arc distance (mm)	≤50			≤50	
Operating ambient temp	-35 °C to +70°C			-35 °C to +70°C	
Accessory	Auxiliary contacts	●	●	●	●
	Alarm contacts	●	●	●	●
	Shunt Release	●	●	●	●
	Under-Voltage Release	●	●	●	●
	Motor Operating Mechanism	●	●	●	●
	Manual Handle Assembly	●	●	●	●
	Fixed Type Rear-Mounting Kit	●	●	●	●
	Plug-in Type, Front-of-Panel	●	●	●	●
	Plug-in Type, Rear-of-Panel	●	●	●	●
	Mechanical Interlock	●	●	●	●
Instantaneous protection	Power distribution protection	In≤32A:400A;In≥40A:10In			In≤32A:400A;In≥40A:10In
	Electric motor protection	In≤32A:400A;In≥40A:12In			In≤32A:400A;In≥40A:12In
Overall dimensions (mm) (L-W-H)		3 P	130-75-65		130-75-65
		4 P	130-100-65		130-100-65

Note: ● for optional accessories; “-” for no optional accessories.

### Type designation



Code Position	Code Symbol	Meaning & Explanation
①	CQ	Enterprise Code: Zhejiang Chuangqi Electric Co., LTD.
②	M	Product Category: Molded Case Circuit Breaker
③	5	Design Serial Number
④	125	Rated Frame Current (A): Options: 63, 100, 125, 250, 400, 630, 800
⑤	M	Breaking Capacity Class: • C - Basic Type • L - Standard Type • M - Higher Breaking Type • H - High Breaking Type
⑥	□	Operation Mode: • (No Code) - Manual Direct Operation • Z - Rotary Handle Operation • P - Electric Operation
⑦	4	Number of Poles: • 3 - Three Poles • 4 - Four Poles
⑧	300	Trip Unit & Accessories Code: • 3 - Electronic Trip (Compound Trip) • 2 - Magnetic Trip Only (Single Magnetic Trip) • 00 - No Accessories (Refer to accessory table for specific codes)
⑨	□	Application Type: • (No Code) - Distribution Protection • 2 - Motor Protection
⑩	B	N-Pole Type (For 4P products only, 3P has no code): • Type A: N-pole is always connected, without overcurrent release. • Type B: N-pole breaks with other poles, without overcurrent release. • Type C: N-pole breaks with other poles, with overcurrent release. • Type D: N-pole is always connected, with overcurrent release.
⑪	125A	Rated Current: See technical parameter table for available values.
⑫	□	Terminal & Connection Type: • (No Code) - Front Terminal Connection • B - Rear Terminal Connection • C - Plug-in Type

### Technical Specifications

Model number	CQM5-125				CQM5-250					
Rated current of frame level In(A)	125				250					
Rated current In(A),at 40°C	10, 16, 20, 32, 40, 50, 63, 80, 100, 125				100,125,140,160,180,200, 225,250					
Rated operating voltage Ue(V)	AC380/400/415V				AC380/400/415V					
	AC660/690V				AC660/690V					
Rated insulation voltage Ui (V)	1000				1000					
Rated impulse withstand voltage Uimp(KV)	8				8					
Mechanical life	20000				20000					
Electrical life(AC415V)	8000				8000					
Trip mechanisms and protection types	Thermal-magnetic trip				Thermal-magnetic trip					
Selectivity category	A				A					
Number of poles	3P	3P, 4P	4P		3P	3P, 4P	4P			
Breaking capacity designation	C	L	M	H	C	L	M	H		
Rated ultimate short-circuit breaking capacity (Icu) (kA)	AC380/400/415V	36	50	70	100	36	50	70	100	
	AC660/690V	/	/	20	/	/	/	20	/	
Rated service short-circuit breaking capacity (Ics) (kA)	AC380/400/415V	25	36	50	70	25	36	50	70	
	AC660/690V	/	/	10	/	/	/	10	/	
Phase spacing (mm)	30				35					
Arc distance (mm)	≤50				≤100					
Operating ambient temp	-35 °C to +70°C				-35 °C to +70°C					
Accessory	Auxiliary contacts	●	●	●	●	●	●	●	●	
	Alarm contacts	●	●	●	●	●	●	●	●	
	Shunt Release	●	●	●	●	●	●	●	●	
	Under-Voltage Release	●	●	●	●	●	●	●	●	
	Motor Operating Mechanism	●	●	●	●	●	●	●	●	
	Manual Handle Assembly	●	●	●	●	●	●	●	●	
	Fixed Type Rear-Mounting Kit	●	●	●	●	●	●	●	●	
	Plug-in Type, Front-of-Panel	●	●	●	●	●	●	●	●	
	Plug-in Type, Rear-of-Panel	●	●	●	●	●	●	●	●	
	Mechanical Interlock	●	●	●	●	●	●	●	●	
Instantaneous protection	Power distribution protection	In≤40A:400A;In≥50A:10In				10In				
	Electric motor protection	In≤40A:400A;In≥50A:12In				12In				
Overall dimensions (mm) (L-W-H)		3 P	155-90-75.5				165-105-75			
		4 P	155-120-87				165-140-100			

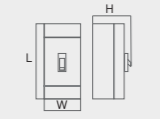
Note: ● for optional accessories; “-” for no optional accessories.

### Technical Specifications

Model number	CQM5-400					CQM5-630						
Rated current of frame level In(A)	400					630						
Rated current In(A),at 40°C	225,250,315,350,400					400,500,630						
Rated operating voltage Ue(V)	AC380/400/415V					AC380/400/415V						
	AC660/690V					AC660/690V						
Rated insulation voltage Ui (V)	1000					1000						
Rated impulse withstand voltage Uimp(KV)	8					8						
Mechanical life	10000					1000						
Electrical life(AC415V)	7000					7000						
Trip mechanisms and protection types	Thermal-magnetic trip					Thermal-magnetic trip						
Selectivity category	A					A						
Number of poles	3P		4P	3P		3P		4P	3P			
Breaking capacity designation	C	L	M	/	H	L	M	/	H			
Rated ultimate short-circuit breaking capacity (Icu) (kA)	AC380/400/415V	36	50	70	70	100	50	70	70	100		
	AC660/690V	/	/	20	20	/	/	20	20	/		
Rated service short-circuit breaking capacity (Ics) (kA)	AC380/400/415V	36	50	70	70	75	50	70	70	75		
	AC660/690V	/	/	15	15	/	/	15	15	/		
Phase spacing (mm)	48					70						
Arc distance (mm)	≤100					≤100						
Operating ambient temp	-35 °C to +70°C					-35 °C to +70°C						
Accessory	Auxiliary contacts	●	●	●	●	●	●	●	●	●		
	Alarm contacts	●	●	●	●	●	●	●	●	●		
	Shunt Release	●	●	●	●	●	●	●	●	●		
	Under-Voltage Release	●	●	●	●	●	●	●	●	●		
	Motor Operating Mechanism	●	●	●	●	●	●	●	●	●		
	Manual Handle Assembly	●	●	●	●	●	●	●	●	●		
	Fixed Type Rear-Mounting Kit	●	●	●	●	●	●	●	●	●		
	Plug-in Type, Front-of-Panel	●	●	●	●	●	●	●	●	●		
	Plug-in Type, Rear-of-Panel	●	●	●	●	●	●	●	●	●		
	Mechanical Interlock	●	●	●	●	●	●	●	●	●		
Instantaneous protection	Power distribution protection	10In					10In					
	Electric motor protection	12In					12In					
Overall dimensions (mm) (L-W-H)		3 P	275-150-104.5					275-150-104.5				
		4 P	275-198-104.5					275-198-104.5				

Note: ● for optional accessories; “-” for no optional accessories.

### Technical Specifications

Model number		CQM5-800			
Rated current of frame level In(A)		800			
Rated current In(A),at 40°C		400,500,630,700,800			
Rated operating voltage Ue(V)		AC380/400/415V AC660/690V			
Rated insulation voltage Ui (V)		1000			
Rated impulse withstand voltage Uimp(KV)		8			
Mechanical life		10000			
Electrical life(AC415V)		7000			
Trip mechanisms and protection types		Thermal-magnetic trip			
Selectivity category		A			
Number of poles		3P	4P	3P	3P
Breaking capacity designation		L	M	/	H
Rated ultimate short-circuit breaking capacity (Icu) (kA)	AC380/400/415V	50	70	70	100
	AC660/690V	/	20	20	/
Rated service short-circuit breaking capacity (Ics) (kA)	AC380/400/415V	50	70	70	75
	AC660/690V	/	15	15	/
Phase spacing (mm)		70			
Arc distance (mm)		≤100			
Operating ambient temp		-35 °C to +70°C			
Accessory	Auxiliary contacts	●	●	●	●
	Alarm contacts	●	●	●	●
	Shunt Release	●	●	●	●
	Under-Voltage Release	●	●	●	●
	Motor Operating Mechanism	●	●	●	●
	Manual Handle Assembly	●	●	●	●
	Fixed Type Rear-Mounting Kit	●	●	●	●
	Plug-in Type, Front-of-Panel	●	●	●	●
	Plug-in Type, Rear-of-Panel	●	●	●	●
	Mechanical Interlock	●	●	●	●
Instantaneous protection	Power distribution protection	10In			
	Electric motor protection	12In			
Overall dimensions (mm) (L-W-H)	 3 P	280-210-112			
	4 P	280-280-112			

Note: ● for optional accessories; “-” for no optional accessories.

### Accessory List

Model number		CQM5-63/100/125		CQM5-250		CQM5-400/630		CQM5-800	
Number of poles		3P	4P	3P	4P	3P	4P	3P	4P
Accessory code	Accessory name								
00	None								
10	Shunt Release (left mounted)								
	Shunt Release (right mounted)								
20	Two Auxiliary Contacts (left mounted)								
	Two Auxiliary Contacts (right mounted)								
21	Single Auxiliary Contact (left mounted)								
	Single Auxiliary Contact (right mounted)								
30	Undervoltage Release (left mounted)								
	Undervoltage Release (right mounted)								
40	Shunt Release + Two Auxiliary Contacts								
41	Shunt Release + Single Auxiliary Contact								
50	Shunt Release + Undervoltage Release								
60	Two Sets of Auxiliary Contacts								
61	Two Sets of Single Auxiliary Contacts								
70	Undervoltage Release + Two Auxiliary Contacts								
71	Undervoltage Release + Single Auxiliary Contact								
08	Alarm Contact (left mounted)								
	Alarm Contact (right mounted)								
18	Shunt Release + Alarm Contact								
28	Two Auxiliary Contacts + Alarm Contact								
38	Undervoltage Release + Alarm Contact								
48	Shunt Release + Auxiliary Alarm Contact								
58	Auxiliary Alarm Contact (left mounted)								
	Auxiliary Alarm Contact (right mounted)								
68	Two Auxiliary Contacts + Auxiliary Alarm Contact								
78	Undervoltage Release + Auxiliary Alarm Contact								

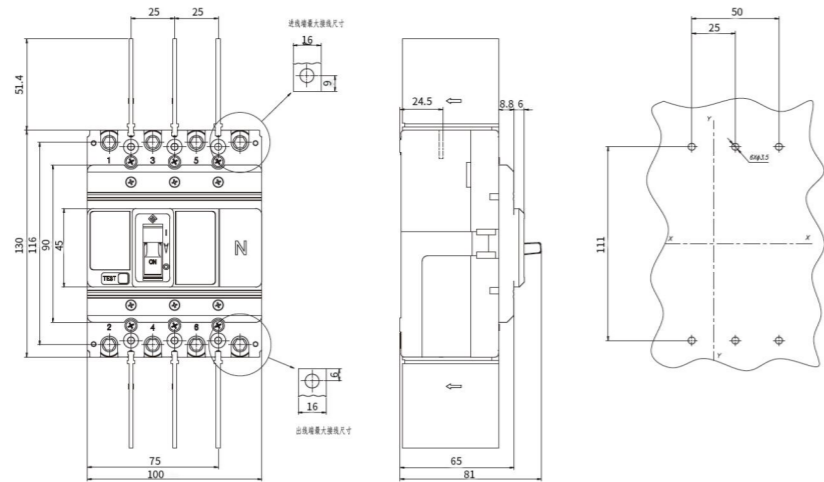
Note:



- Alarm Contact
- Auxiliary Contact
- Undervoltage release
- Shunt release

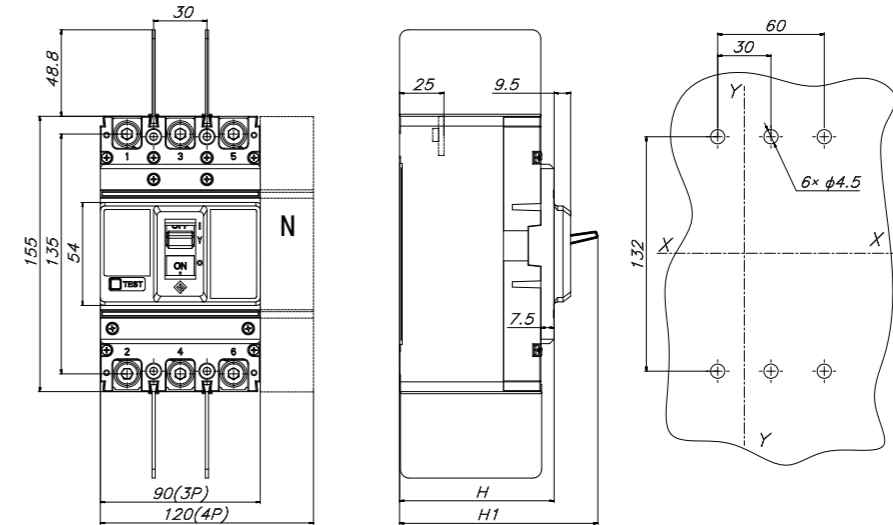
**Dimensions (mm)**

CQM5-63/100  
Front Terminal Connection Dimensions (X-X, Y-Y denote center points for 3P breakers)



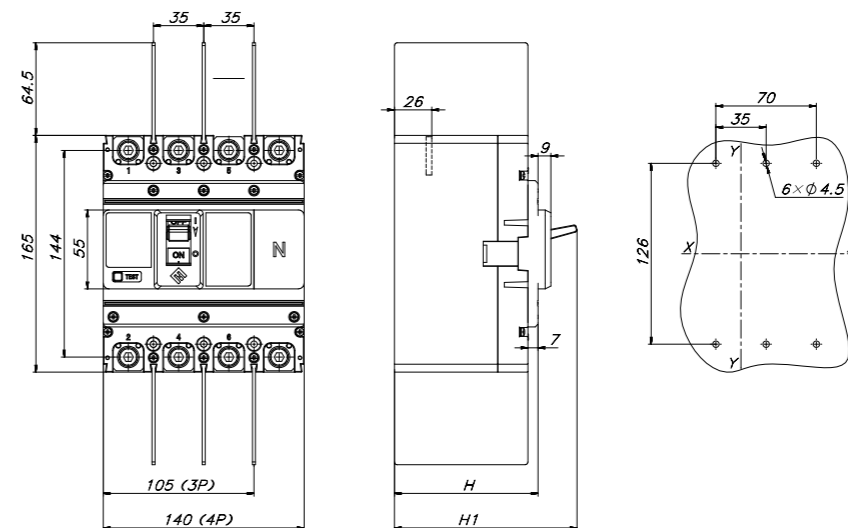
CQM5-125 (C, L, M, H Types)  
Front Terminal Connection Dimensions  
(X-X, Y-Y denote center points for 3P breakers)

Model number	H (mm)	H1 (mm)
CQM5-125C、125L	75.5	101.5
CQM5-125M、125H	87	113

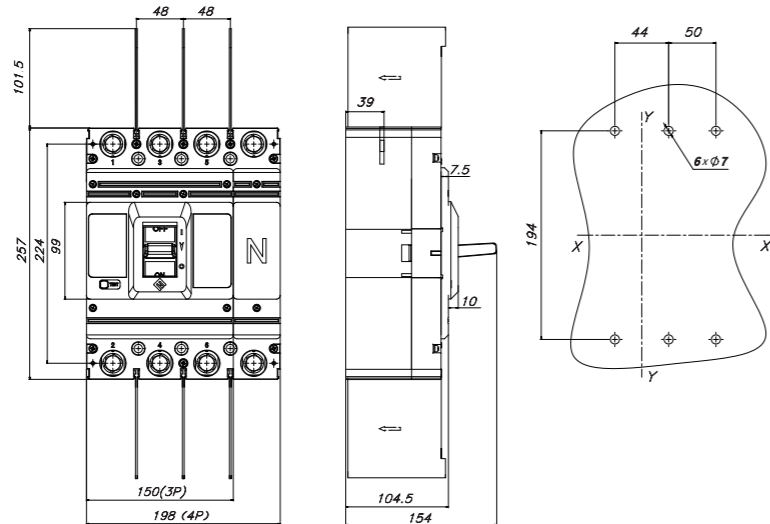


CQM5-250 (C, L, M, H Types)  
Front Terminal Connection Dimensions  
(X-X, Y-Y denote center points for 3P breakers)

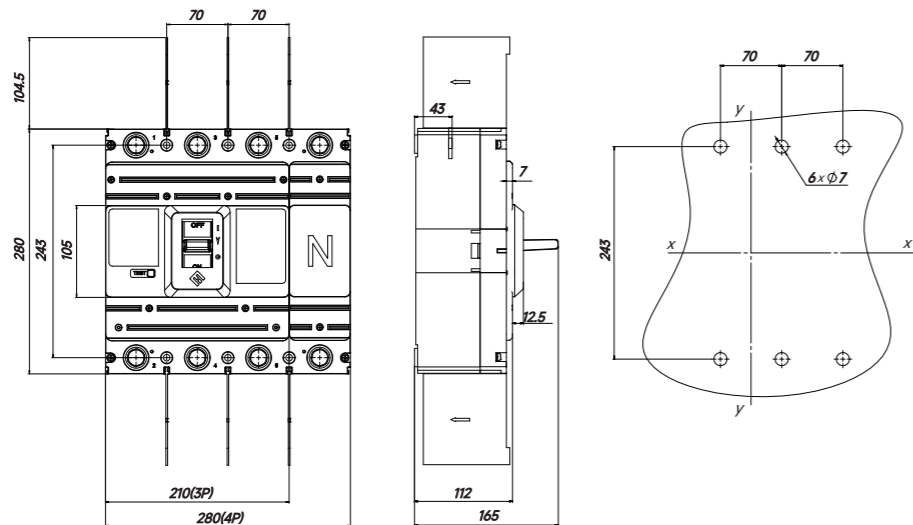
Model number	H (mm)	H1 (mm)
CQM5-250C、250L	75	103.7
CQM5-250M、250H	100	128.7



CQM5-400 (C, L, M, H Types)  
CQM5-630 (C, L, M, H Types)  
Front Terminal Connection Dimensions (X-X, Y-Y denote center points for 3P breakers)



CQM5-800 (L, M, H Types)  
Front Terminal Connection Dimensions (X-X, Y-Y denote center points for 3P breakers)



Note: Undefined tolerances comply with grade GB/T 1804-80.

## CQM5L Series

### Residual current protected molded case circuit breaker



#### Product Features

- Compact design with high breaking capacity.
- High short-circuit making capacity and vibration resistance.
- Modular structure for quick and easy installation.
- Provides overload, short-circuit, and residual current (earth fault) protection.
- Adjustable residual current protection with selectable delay levels (3 or 4 stages) and configurable leakage trip current.
- Equipped with a leakage trip indicator.
- Suitable for circuits with AC voltage up to 415V and frequency 50Hz/60Hz.
- Complies with GB/T 14048.2 and IEC 60947-2 standards.

#### Operating & Installation Conditions

- Ambient temperature: -5°C to +40°C (average ≤ +35°C within 24 hours).
- Altitude ≤ 2000 meters above sea level.
- Relative humidity ≤ 50% at +40°C.
- Must be mounted vertically with tilt tolerance within ±5°.
- Pollution degree: 3.
- Suitable for protection in distribution and motor circuits.

#### Type designation



Code Position	Code Symbol	Meaning & Explanation
①	CQ	Enterprise Code: Zhejiang Chuangqi Electric Co., LTD.
②	M	Product Category: Molded Case Circuit Breaker
③	5	Design Serial Number
④	L	Special Protection Function Residual Current Protection (Options: L=RC Protection)
⑤	125	Rated Frame Current (A): Options: 125, 250, 400, 630
⑥	□	Operation Mode: • (No Code) - Manual Direct Operation • Z - Rotary Handle Operation • P - Electric Operation
⑦	4	Number of Poles: • 3 - Three Poles • 4 - Four Poles
⑧	300	Trip Unit & Accessories Code: • 3 - Electronic Trip (Compound Trip) • 2 - Magnetic Trip Only (Single Magnetic Trip) • 00 - No Accessories (Refer to accessory table for specific codes)
⑨	□	Application Type: • (No Code) - Distribution Protection • 2 - Motor Protection N-Pole Type (For 4P products only, 3P has no code): • Type A: N-pole is always connected, without overcurrent release. • Type B: N-pole breaks with other poles, without overcurrent release. • Type C: N-pole breaks with other poles, with overcurrent release. • Type D: N-pole is always connected, with overcurrent release.
⑩	B	
⑪	125A	Rated Current: See technical parameter table for available values.
⑫	Y	Time-Delay Function • Y: With Delay • F: Without Delay
⑬	□	Terminal & Connection Type: • (No Code) - Front Terminal Connection • B - Rear Terminal Connection • C - Plug-in Type

### Technical Specifications

Model number	CQM5L-125	CQM5L-250		
Rated current of frame level In(A)	125	250		
Rated current In(A),at 40°C	10, 16, 20, 32, 40, 50, 63, 80, 100, 125	100,125,140,160,180,200, 225,250		
Rated operating voltage Ue(V)	AC380/400/415V	AC380/400/415V		
Rated insulation voltage Ui (V)	1000	1000		
Rated impulse withstand voltage Uimp(KV)	8	8		
Mechanical life	20000	20000		
Electrical life(AC415V)	8000	8000		
Trip mechanisms and protection types	Thermal-magnetic trip	Thermal-magnetic trip		
Selectivity category	A	A		
Number of poles	3P、 4P	3P、 4P		
Rated Ultimate Short-Circuit Breaking Capacity (Icu) (kA)	70	70		
Rated Service Short-Circuit Breaking Capacity (Ics) (kA)	50	50		
Rated Residual Operating Current (IΔn)	Time-delayed + Non-delayed	100/300/500		
	Non-delayed only	30/100/300/500		
Rated Residual Current Type	AC type	AC type		
Rated Residual Making & Breaking Capacity (IΔm)	1/4Icu	1/4Icu		
Phase spacing (mm)	30	35		
Arc distance (mm)	≤50	≤50		
Operating ambient temp	-35 °C to +70°C	-35 °C to +70°C		
Accessory	Auxiliary contacts	●		
	Alarm contacts	●		
	Shunt Release	●		
	Under-Voltage Release	●		
	Motor Operating Mechanism	●		
	Manual Handle Assembly	●		
	Fixed Type Rear-Mounting Kit	●		
	Plug-in Type, Front-of-Panel	●		
	Plug-in Type, Rear-of-Panel	●		
	Mechanical Interlock	●		
Instantaneous protection	Power distribution protection	In≤40A:400A;In≥50A:10In		
	Electric motor protection	In≤40A:400A;In≥50A:12In		
Overall dimensions (mm) (L-W-H)		3 P	155-90-90	165-105-103
		4 P	155-120-90	165-140-103

Note: ● for optional accessories; “-” for no optional accessories.

### Technical Specifications

Model number	CQM5L-400	CQM5L-630		
Rated current of frame level In(A)	400	630		
Rated current In(A),at 40°C	225,250,315,350,400	400,500,630		
Rated operating voltage Ue(V)	AC380/400/415V	AC380/400/415V		
Rated insulation voltage Ui (V)	1000	1000		
Rated impulse withstand voltage Uimp(KV)	8	8		
Mechanical life	10000	10000		
Electrical life(AC415V)	7000	7000		
Trip mechanisms and protection types	Thermal-magnetic trip	Thermal-magnetic trip		
Selectivity category	A	A		
Number of poles	3P、 4P	3P、 4P		
Rated Ultimate Short-Circuit Breaking Capacity (Icu) (kA)	70	70		
Rated Service Short-Circuit Breaking Capacity (Ics) (kA)	70	70		
Rated Residual Operating Current (IΔn)	Time-delayed + Non-delayed	100/300/500/1000		
	Non-delayed only	/		
Rated Residual Current Type	AC type	AC type		
Rated Residual Making & Breaking Capacity (IΔm)	1/4Icu	1/4Icu		
Phase spacing (mm)	48	70		
Arc distance (mm)	≤100	≤100		
Operating ambient temp	-35 °C to +70°C	-35 °C to +70°C		
Accessory	Auxiliary contacts	●		
	Alarm contacts	●		
	Shunt Release	●		
	Under-Voltage Release	●		
	Motor Operating Mechanism	●		
	Manual Handle Assembly	●		
	Fixed Type Rear-Mounting Kit	●		
	Plug-in Type, Front-of-Panel	●		
	Plug-in Type, Rear-of-Panel	●		
	Mechanical Interlock	●		
Instantaneous protection	Power distribution protection	10In		
	Electric motor protection	12In		
Overall dimensions (mm) (L-W-H)		3 P	257-150-104.5	280-210-112
		4 P	257-198-104.5	280-280-112

Note: ● for optional accessories; “-” for no optional accessories.

Accessory List

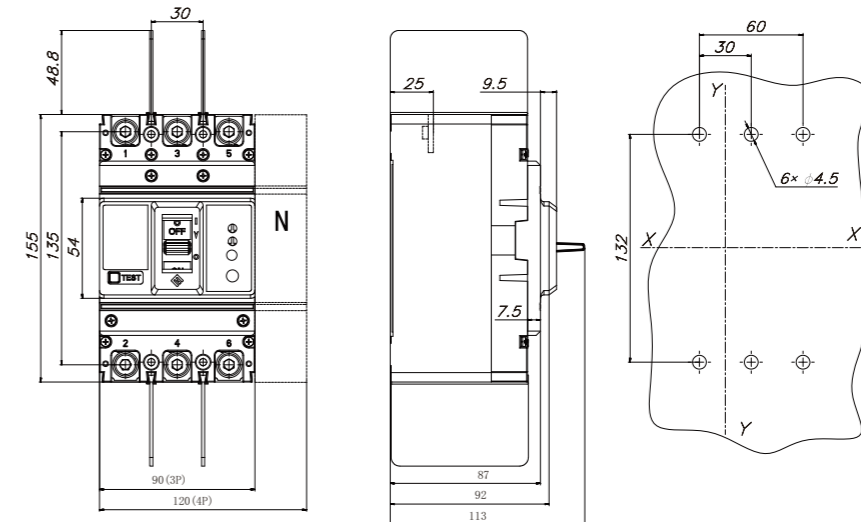
Model number	CQM5L-125		CQM5L-250		CQM5L-400		CQM5L-630	
Number of poles	3P	4P	3P	4P	3P	4P	3P	4P
Accessory code	Accessory name							
00	None							
10	Shunt Release (left mounted)							
20	Two Auxiliary Contacts (left mounted)							
	Two Auxiliary Contacts (right mounted)							
21	Single Auxiliary Contact (left mounted)							
	Single Auxiliary Contact (right mounted)							
30	Undervoltage Release (left mounted)							
40	Shunt Release + Two Auxiliary Contacts							
41	Shunt Release + Single Auxiliary Contact							
60	Two Sets of Auxiliary Contacts							
61	Two Sets of Single Auxiliary Contacts							
70	Undervoltage Release + Two Auxiliary Contacts							
71	Undervoltage Release + Single Auxiliary Contact							
08	Alarm Contact (left mounted)							
	Alarm Contact (right mounted)							
18	Shunt Release + Alarm Contact							
28	Two Auxiliary Contacts + Alarm Contact							
38	Undervoltage Release + Alarm Contact							
48	Shunt Release + Auxiliary Alarm Contact							
58	Auxiliary Alarm Contact (left mounted)							
	Auxiliary Alarm Contact (right mounted)							
68	Two Auxiliary Contacts + Auxiliary Alarm Contact							
78	Undervoltage Release + Auxiliary Alarm Contact							

Note:

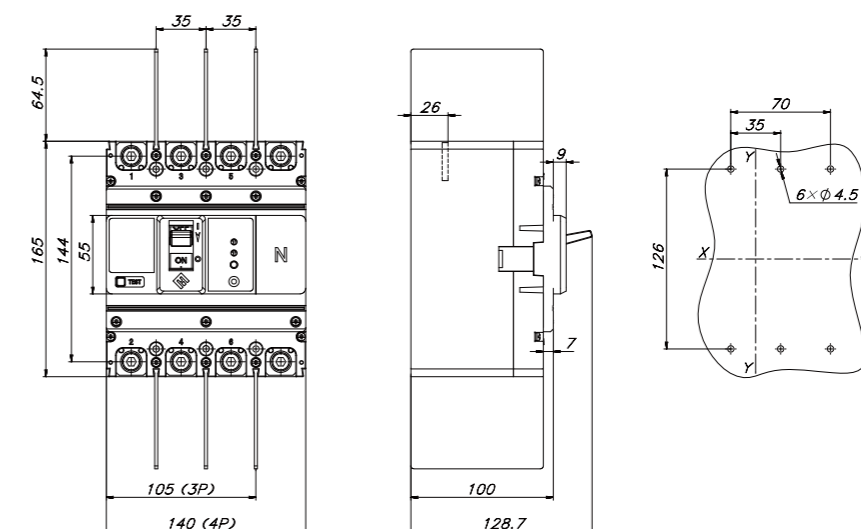


Dimensions (mm)

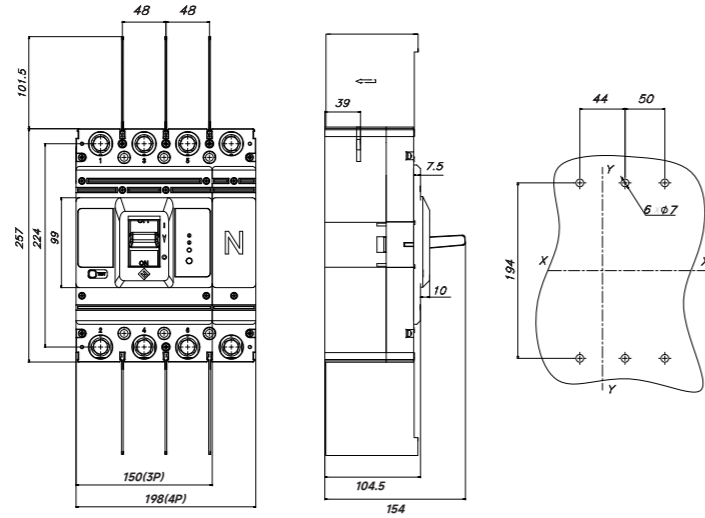
CQM5L-125  
Front Terminal Connection Dimensions (X-X, Y-Y denote center points for 3P breakers)



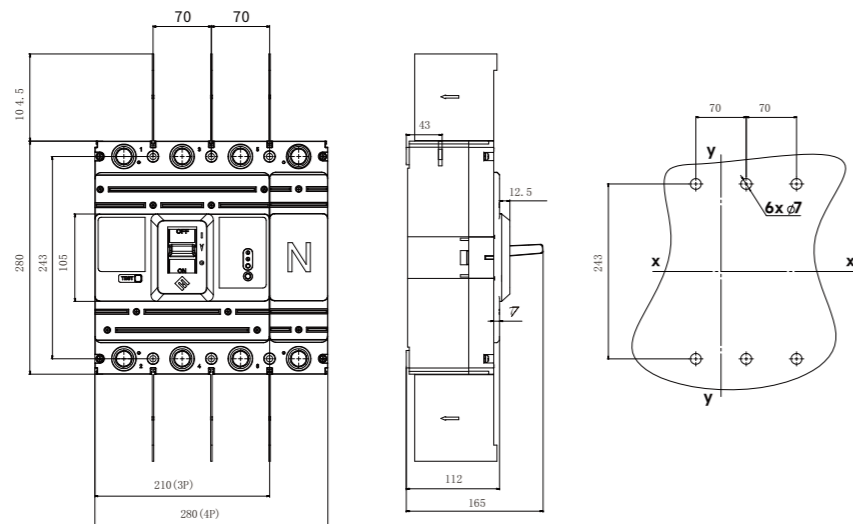
CQM5L-250  
Front Terminal Connection Dimensions (X-X, Y-Y denote center points for 3P breakers)



CQM5L-400  
Front Terminal Connection Dimensions (X-X, Y-Y denote center points for 3P breakers)



CQM5L-630  
Front Terminal Connection Dimensions



Note: Undefined tolerances comply with grade GB/T 1804-80.

## CQM5E Series Molded case circuit breaker



### Product Features

- Compact and modular design for quick installation and maintenance.
- High breaking capacity (M-type: higher breaking, H-type: high breaking).
- Provides overload, short-circuit, and ground fault protection, with optional undervoltage protection.
- Supports communication module integration for remote monitoring and control (remote trip, adjustment, testing, and signaling).
- Suitable for both distribution network and motor protection applications.
- Complies with IEC 60947-1, IEC 60947-2, and GB/T 14048 standards.

### Operating & Environmental Conditions

- Designed for vertical mounting ( $\pm 5^\circ$  tilt allowed unless specified).
- Suitable for infrequent circuit switching and motor starting operations.
- Pollution degree: 3
- Communication module can be added for smart functionality.

### Type designation



Code Position	Code Symbol	Meaning & Explanation
①	CQ	Enterprise Code: Zhejiang Chuangqi Electric Co., LTD.
②	M	Molded Case Circuit Breaker
③	5	Design Serial Number
④	E	Special Protection Function Residual Current Protection (Options: L=RC Protection)
⑤	125	Rated Frame Current (A): Options: 125, 250, 400, 630, 800
⑥	M	Short-Circuit Breaking Capacity: • M: Higher Fault Capacity • H: High Fault Capacity
⑦	[ ]	Operation Mechanism [blank]: Manual   Z: Rotary Handle   P: Motorized
⑧	[ ]	Intelligence Function • [blank]: Basic Protection • G: Ground Fault Protection • T: Communication Capable • GT: Ground+Communication
⑨	/	Number of Poles: • 3 - Three Poles • 4 - Four Poles
⑩	4	Trip Unit & Accessories Code: • 3 - Electronic Trip (Compound Trip) • 00 - No Accessories (Refer to accessory table for specific codes)
⑪	300	[ ]: Application Profile [blank]: Distribution   2: Motor Protection
⑫	[ ]	N-Pole Type (For 4P products only): • Type A: N-pole is always connected, without overcurrent release. • Type B: N-pole breaks with other poles, without overcurrent release. • Type C: N-pole breaks with other poles, with overcurrent release. • Type D: N-pole is always connected, with overcurrent release.
⑬	B	Special Function I: Overload Alarm (non-trip)
⑭	[ ]	Rated Current (A) Options: 32   63   125   250   400   630   800
⑮	[ ]	Terminal & Connection Type: • (No Code) - Front Terminal Connection • B - Rear Terminal Connection • C - Plug-in Type

### Technical Specifications

Model number	CQM5E-125			CQM5E-250				
Rated current In(A), 40°C	32	63	125	250				
Setting Current Ir (A), 40°C	16/20/25/32	32/40/50/63	63/80/100/125	100,125,140,160,180,200,225,250				
Rated operating voltage Ue(V)	AC380/400/415V			AC380/400/415V				
	AC660/690V			AC660/690V				
Rated insulation voltage Ui (V)	1000			1000				
Rated impulse withstand voltage Uimp(KV)	8			8				
Mechanical life	20000			20000				
Electrical life(AC415V)	8000			8000				
Trip mechanisms and protection types	Electronic			Electronic				
Selectivity category	A			A				
Number of poles	3P		4P	3P		4P		
Breaking capacity designation	M	H	/	M	H	/		
Rated ultimate short-circuit breaking capacity (Icu) (kA)	AC380/400/415V	70	85	70	85	70		
	AC660/690V	20	/	20	20	/		
Rated service short-circuit breaking capacity (Ics) (kA)	AC380/400/415V	50	65	50	65	50		
	AC660/690V	10	/	10	10	/		
Phase spacing (mm)	30			35				
Arc distance (mm)	≤50			≤100				
Operating ambient temp	-35 °C to +70°C			-35 °C to +70°C				
Rated short-time withstand current (Icw)	1kA/1s			2.5kA/1s				
Accessory	Auxiliary contacts	●	●	●	●	●		
	Alarm contacts	●	●	●	●	●		
	Shunt Release	●	●	●	●	●		
	Under-Voltage Release	●	●	●	●	●		
	Motor Operating Mechanism	●	●	●	●	●		
	Manual Handle Assembly	●	●	●	●	●		
	Fixed Type Rear-Mounting Kit	●	●	●	●	●		
	Plug-in Type, Front-of-Panel	●	●	●	●	●		
	Plug-in Type, Rear-of-Panel	●	●	●	●	●		
	Mechanical Interlock	●	●	●	●	●		
Short-circuit protection types	Short-time delay protection (S)	I <sub>sd</sub> = (2-12) I <sub>r</sub>			I <sub>sd</sub> = (2-12) I <sub>r</sub>			
	Instantaneous protection (I)	I <sub>i</sub> = (4-14) I <sub>r</sub>			I <sub>i</sub> = (4-14) I <sub>r</sub>			
Overall dimensions (mm) (L-W-H)		3 P	155-90-90			165-105-103		
		4 P	155-120-90			165-140-103		

Note: ● for optional accessories; “-” for no optional accessories.

### Technical Specifications

Model number	CQM5E-400			CQM5E-630				
Rated current In(A), 40°C	400			630				
Setting Current Ir (A), 40°C	200,225,250,280,315,350,400			400,420,440,460,480,500,530,560,600,630				
Rated operating voltage Ue(V)	AC380/400/415V			AC380/400/415V				
	AC660/690V			AC660/690V				
Rated insulation voltage Ui (V)	1000			1000				
Rated impulse withstand voltage Uimp(KV)	8			8				
Mechanical life	10000			10000				
Electrical life(AC415V)	7000			7000				
Trip mechanisms and protection types	Electronic			Electronic				
Selectivity category	B			B				
Number of poles	3P		4P	3P		4P		
Breaking capacity designation	M	H	/	M	H	/		
Rated ultimate short-circuit breaking capacity (Icu) (kA)	AC380/400/415V	70	100	70	100	70		
	AC660/690V	20	/	20	20	/		
Rated service short-circuit breaking capacity (Ics) (kA)	AC380/400/415V	50	75	50	75	50		
	AC660/690V	10	/	10	10	/		
Phase spacing (mm)	48			70				
Arc distance (mm)	≤100			≤100				
Operating ambient temp	-35 °C to +70°C			-35 °C to +70°C				
Rated short-time withstand current (Icw)	5kA/1s			10kA/1s				
Accessory	Auxiliary contacts	●	●	●	●	●		
	Alarm contacts	●	●	●	●	●		
	Shunt Release	●	●	●	●	●		
	Under-Voltage Release	●	●	●	●	●		
	Motor Operating Mechanism	●	●	●	●	●		
	Manual Handle Assembly	●	●	●	●	●		
	Fixed Type Rear-Mounting Kit	●	●	●	●	●		
	Plug-in Type, Front-of-Panel	●	●	●	●	●		
	Plug-in Type, Rear-of-Panel	●	●	●	●	●		
	Mechanical Interlock	●	●	●	●	●		
Short-circuit protection types	Short-time delay protection (S)	I <sub>sd</sub> = (2-12) I <sub>r</sub>			I <sub>sd</sub> = (2-12) I <sub>r</sub>			
	Instantaneous protection (I)	I <sub>i</sub> = (4-14) I <sub>r</sub>			I <sub>i</sub> = (4-14) I <sub>r</sub>			
Overall dimensions (mm) (L-W-H)		3 P	257-150-140.5			280-210-112		
		4 P	257-198-140.5			280-280-112		

Note: ● for optional accessories; “-” for no optional accessories.

### Technical Specifications

Model number		CQM5E-800		
Rated current In(A), 40°C		800		
Setting Current Ir (A), 40°C		630, 640, 660, 680, 700, 720, 740, 760, 780, 800		
Rated operating voltage Ue(V)		AC380/400/415V AC660/690V		
Rated insulation voltage Ui (V)		1000		
Rated impulse withstand voltage Uimp(KV)		8		
Mechanical life		10000		
Electrical life(AC415V)		7000		
Trip mechanisms and protection types		Electronic		
Selectivity category		B		
Number of poles		3P	4P	
Breaking capacity designation		M	H	I
Rated ultimate short-circuit breaking capacity (Icu) (kA)	AC380/400/415V	70	100	70
	AC660/690V	20	/	20
Rated service short-circuit breaking capacity (Ics) (kA)	AC380/400/415V	50	75	50
	AC660/690V	10	/	10
Phase spacing (mm)		70		
Arc distance (mm)		≤100		
Operating ambient temp		-35 °C to +70°C		
Rated short-time withstand current (Icw)		10kA/1s		
Accessory	Auxiliary contacts	●	●	●
	Alarm contacts	●	●	●
	Shunt Release	●	●	●
	Under-Voltage Release	●	●	●
	Motor Operating Mechanism	●	●	●
	Manual Handle Assembly	●	●	●
	Fixed Type Rear-Mounting Kit	●	●	●
	Plug-in Type, Front-of-Panel	●	●	●
Short-circuit protection types	Short-time delay protection (S)	I <sub>sd</sub> = (2-12) I <sub>r</sub>		
	Instantaneous protection (I)	I <sub>i</sub> = (4-14) I <sub>r</sub>		
	Overall dimensions (mm) (L-W-H)	3 P	280-210-112	
		4 P	280-280-112	

Note: ● for optional accessories; “-” for no optional accessories.

### Accessory List

Model number		CQM5E-125		CQM5E-250		CQM5E-400		CQM5E-630/800	
Number of poles		3P	4P	3P	4P	3P	4P	3P	4P
Accessory code	Accessory name								
00	None								
10	Shunt Release (left mounted)								
	Shunt Release (right mounted)								
20	Two Auxiliary Contacts (left mounted)								
	Two Auxiliary Contacts (right mounted)								
21	Single Auxiliary Contact (left mounted)								
	Single Auxiliary Contact (right mounted)								
30	Undervoltage Release (left mounted)								
	Undervoltage Release (right mounted)								
40	Shunt Release + Two Auxiliary Contacts								
41	Shunt Release + Single Auxiliary Contact								
50	Shunt Release + Undervoltage Release								
60	Two Sets of Auxiliary Contacts								
61	Two Sets of Single Auxiliary Contacts								
70	Undervoltage Release + Two Auxiliary Contacts								
71	Undervoltage Release + Single Auxiliary Contact								
08	Alarm Contact (left mounted)								
	Alarm Contact (right mounted)								
18	Shunt Release + Alarm Contact								
28	Two Auxiliary Contacts + Alarm Contact								
38	Undervoltage Release + Alarm Contact								
48	Shunt Release + Auxiliary Alarm Contact								
58	Auxiliary Alarm Contact (left mounted)								
	Auxiliary Alarm Contact (right mounted)								
68	Two Auxiliary Contacts + Auxiliary Alarm Contact								
78	Undervoltage Release + Auxiliary Alarm Contact								

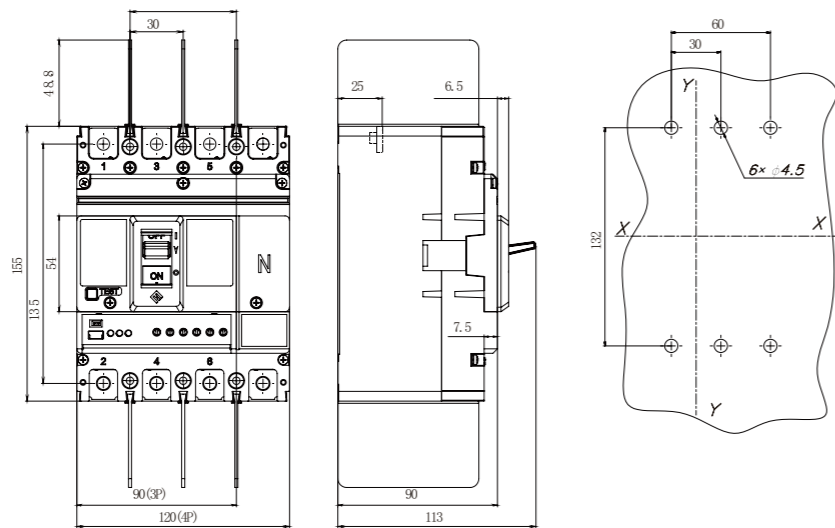
Note:



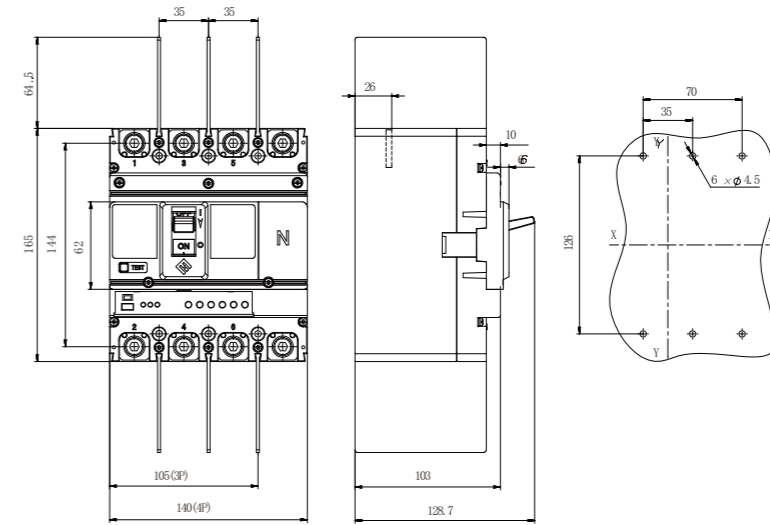
- Alarm Contact      ○ Auxiliary Contact
- Undervoltage release      □ Shunt release

Dimensions (mm)

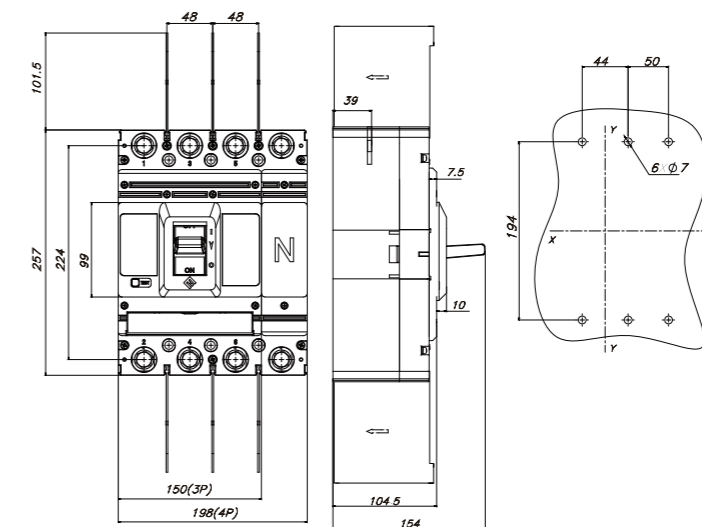
CQM5E-125 (M, H Types)  
Front Terminal Connection Dimensions  
(X-X, Y-Y denote center points for 3P breakers)



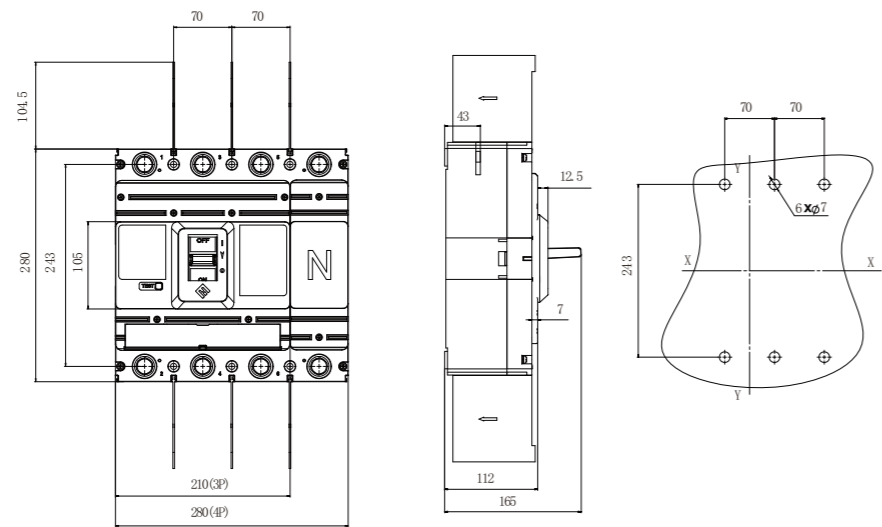
CQM5E-250 (M, H Types)  
Front Terminal Connection Dimensions  
(X-X, Y-Y denote center points for 3P breakers)



CQM5E-400 (M, H Types)  
Front Terminal Connection Dimensions  
(X-X, Y-Y denote center points for 3P breakers)



CQM5E-630 (M, H Types)、CQM5E-800 (M, H Types)  
 Front Terminal Connection Dimensions  
 (X-X, Y-Y denote center points for 3P breakers)

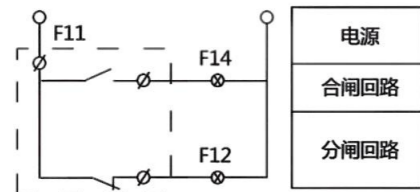


## Internal Accessories

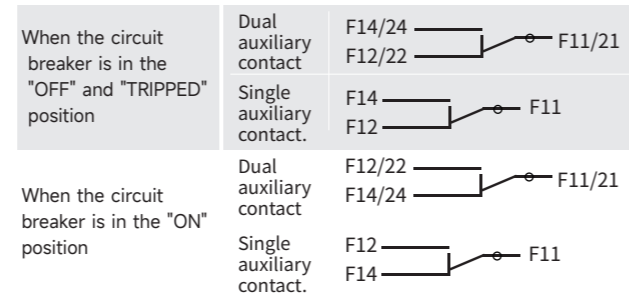
### 1.1 AX Auxiliary Contact

#### Function

Remote status indicator for breaker ON/OFF or trip-free operation, integrated into the auxiliary circuit.



#### Indicating Circuit Breaker ON/OFF Status

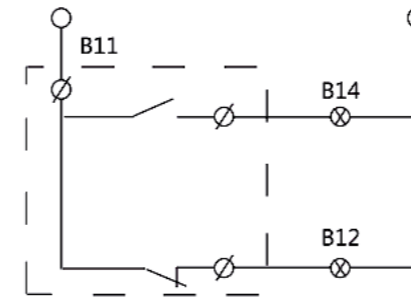


#### Electrical Characteristics

Classification	Frame Rating	Conventional Thermal Current (A)	Rated Operational Current (A)	
Auxiliary Contact	63, 100, 125, 250	3	AC400V	DC220V
	400, 630, 800	3	0.4	0.15

### 1.2 AL Alarm Contact

#### Wiring Diagram



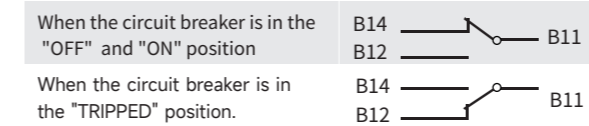
#### Function

Primarily used to provide a signal when a fault such as overload, short circuit, or undervoltage occurs on the circuit breaker's load side, or when it enters a free-trip state.

Reasons for the alarm contact to issue a fault indication signal:

- Overload or Short Circuit Trip
- Undervoltage Trip
- Residual Current Operation Trip
- Manual Free-Trip

#### Indicating Circuit Breaker ON/OFF Status

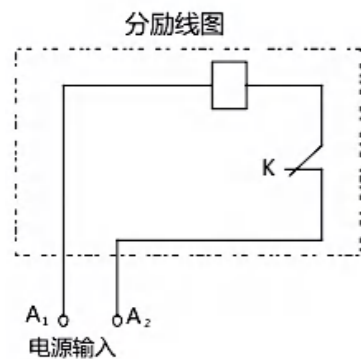


#### Electrical Characteristics

Classification	Frame Rating	Conventional Thermal Current (A)	Rated Operational Current (A)	
Alarm Contact	63, 100, 125, 250	3	AC400V	DC220V
	400, 630, 800	3	0.4	0.15

### 1.3 SHT Shunt Release

#### Wiring Diagram

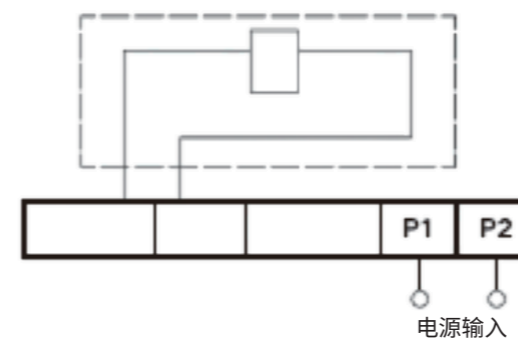


#### Function

The shunt release is activated by an electrical signal, enabling remote and automatic control of the circuit breaker. The shunt release shall reliably cause the circuit breaker to operate when the supply voltage is any value between 70% and 110% of the rated control supply voltage.

### 1.4 UVR Under-Voltage Release

#### Wiring Diagram



#### Function

Protects equipment by tripping breakers during voltage dips.

#### Operational Thresholds

Reliable closing:  $\geq 85\%$  rated voltage  
 Mandatory tripping: 70%–35% rated voltage  
 Closing prevention:  $< 35\%$  rated voltage

Code	Model number	Instantaneous Tripping Current (A)				Power Consumption (W)			
		DC24V	DC220V	AC230V	AC380V	DC24V	DC220V	AC230V	AC380V
1	CQM5-63/100	5.7	0.62	0.64	0.38	136.8	136.4	147.2	152
2	CQM5-125	4	0.24	0.25	0.43	97.6	52.6	57.5	173.9
3	CQM5-250	4	0.24	0.25	0.43	97.6	52.6	57.5	173.9
4	CQM5-400/630	6.8	0.48	0.76	0.28	164.5	105	176.3	112
5	CQM5-800	6.8	0.48	0.76	0.28	164.5	105	176.3	112

Code	Model number	Instantaneous Tripping Current (A)				Power Consumption (W)			
		DC24V	DC220V	AC230V	AC380V	DC24V	DC220V	AC230V	AC380V
1	CQM5L-125	4	0.24	0.25	0.43	97.6	52.6	57.5	173.9
2	CQM5L-250	4	0.24	0.25	0.43	97.6	52.6	57.5	173.9
3	CQM5L-400	6.8	0.48	0.76	0.28	164.5	105	176.3	112
4	CQM5L-630	6.8	0.48	0.76	0.28	164.5	105	176.3	112

Code	Model number	Instantaneous Tripping Current (A)				Power Consumption (W)			
		DC24V	DC220V	AC230V	AC380V	DC24V	DC220V	AC230V	AC380V
1	CQM5E-125	4	0.24	0.25	0.43	97.6	52.6	57.5	173.9
2	CQM5E-250	4	0.24	0.25	0.43	97.6	52.6	57.5	173.9
3	CQM5E-400	6.8	0.48	0.76	0.28	164.5	105	176.3	112
4	CQM5E-630	6.8	0.48	0.76	0.28	164.5	105	176.3	112
5	CQM5E-800	6.8	0.48	0.76	0.28	164.5	105	176.3	112

Code	Model number	Instantaneous Tripping Current (A)		Power Consumption (W)			
		DC24V	DC220V	Pick-up Power (W)		Hold-in Power (W)	
				AC230V	AC380V	AC230V	AC380V
1	CQM5E-125	0.2	0.3	/	/	0.5	0.5
2	CQM5E-250	0.006	0.01	/	/	0.3	0.3
3	CQM5E-400	0.006	0.01	/	/	0.8	0.9
4	CQM5E-630	0.8	0.5	190	223	0.8	0.9
5	CQM5E-800	0.8	0.5	190	223	0.8	0.9

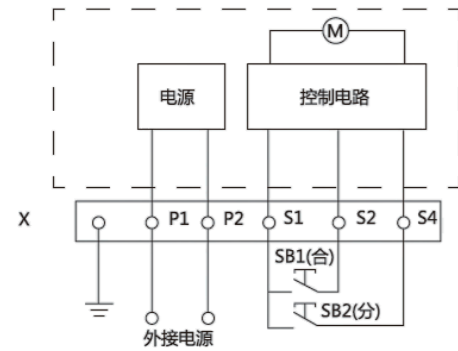
Code	Model number	Instantaneous Tripping Current (A)		Power Consumption (W)			
		DC24V	DC220V	Pick-up Power (W)		Hold-in Power (W)	
				AC230V	AC380V	AC230V	AC380V
1	CQM5L-125	0.006	0.01	/	/	0.3	0.3
2	CQM5L-250	0.006	0.01	/	/	0.3	0.3
3	CQM5L-400	0.8	0.5	190	223	0.8	0.9
4	CQM5L-630	0.8	0.5	190	223	0.8	0.9

Code	Model number	Instantaneous Tripping Current (A)		Power Consumption (W)			
		DC24V	DC220V	Pick-up Power (W)		Hold-in Power (W)	
				AC230V	AC380V	AC230V	AC380V
1	CQM5E-125	0.006	0.01	/	/	0.3	0.3
2	CQM5E-250	0.006	0.01	/	/	0.3	0.3
3	CQM5E-400	0.8	0.5	190	223	0.8	0.9
4	CQM5E-630	0.8	0.5	190	223	0.8	0.9
5	CQM5E-800	0.8	0.5	190	223	0.8	0.9

## External Accessories

### 2.1 Motor Operating Mechanism

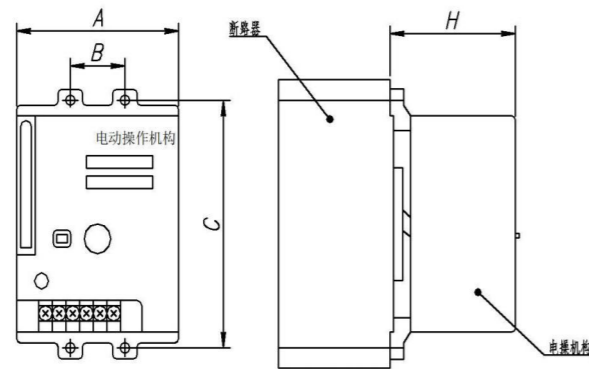
#### Schematic Diagram



#### Function

Suitable for remotely closing, tripping (resetting) the circuit breaker, and for automated applications.  
 Position indication for O (OFF), I (ON), and TRIPPED.  
 Enables free trip operation of the circuit breaker.  
 Allows manual or automatic closing and opening of the circuit breaker.  
 Automatic closing or tripping can be achieved using momentary pulse signals or maintained signal control.  
 Reliable closing and tripping of the circuit breaker is ensured only when the control voltage is  $\geq 85\%$  and  $\leq 110\%$  of the rated control voltage ( $U_n$ ).

#### Dimensions (mm)



Schematic & Symbol Legend:  
 SB1, SB2: Operation buttons  
 (To be provided by customer)  
 X: Terminal block  
 P1, P2: External power supply

Code	Model number	Instantaneous Tripping Current (A)				Power Consumption (W)	Operating Mechanism Height
		DC24V	AC/DC110V	AC/DC220V	AC380V		
1	CQM5-63/100	80	$\leq 180$	$\leq 180$	$\leq 350$	20000	94
2	CQM5-125	80	$\leq 180$	$\leq 180$	$\leq 350$	20000	97
3	CQM5-250	80	$\leq 180$	$\leq 180$	$\leq 350$	20000	101
4	CQM5-400/630	160	$\leq 250$	$\leq 350$	$\leq 600$	10000	149
5	CQM5-800	160	$\leq 250$	$\leq 350$	$\leq 600$	10000	152

Code	Model number	Instantaneous Tripping Current (A)				Power Consumption (W)	Operating Mechanism Height
		DC24V	AC/DC110V	AC/DC220V	AC380V		
1	CQM5L-125	80	$\leq 180$	$\leq 180$	$\leq 350$	20000	97
2	CQM5L-250	80	$\leq 180$	$\leq 180$	$\leq 350$	20000	101
3	CQM5L-400/630	160	$\leq 250$	$\leq 350$	$\leq 600$	10000	149
4	CQM5L-800	160	$\leq 250$	$\leq 350$	$\leq 600$	10000	152

Code	Model number	Instantaneous Tripping Current (A)				Power Consumption (W)	Operating Mechanism Height
		DC24V	AC/DC110V	AC/DC220V	AC380V		
1	CQM5E-125	80	$\leq 180$	$\leq 180$	$\leq 350$	20000	97
2	CQM5E-250	80	$\leq 180$	$\leq 180$	$\leq 350$	20000	101
3	CQM5E-400	160	$\leq 250$	$\leq 350$	$\leq 600$	10000	149
4	CQM5E-630	160	$\leq 250$	$\leq 350$	$\leq 600$	10000	152
5	CQM5E-800	160	$\leq 250$	$\leq 350$	$\leq 600$	10000	152

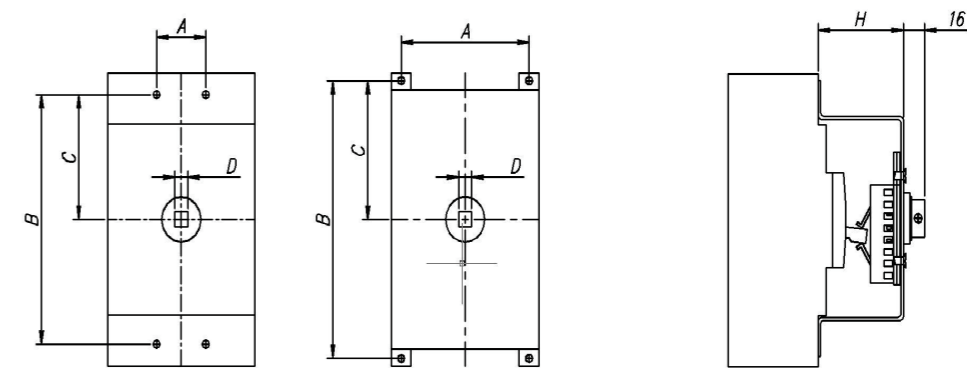
Note: General tolerance grade shall be in accordance with GB/T 1804-c.

### 2.2 Manual Handle Assembly

#### Function

Employs a unique design and transmission mechanism to perform circuit breaker Closing, Tripping (Reset), and Opening operations via handle rotation.  
 Features isolated position indication.  
 Clear position indications: O (OFF), I (ON), and TRIPPED.  
 The breaker in the OFF position accepts 1-3 padlocks ( $\varnothing 5-8\text{mm}$ ), preventing inadvertent closure and locking compartment access.  
 In the ON (closed) position, handle rotation mechanically prevents compartment door opening. (For emergency door access, use the handle's manual override release).  
 Standard shaft length: 150mm.

#### Dimensions (mm)



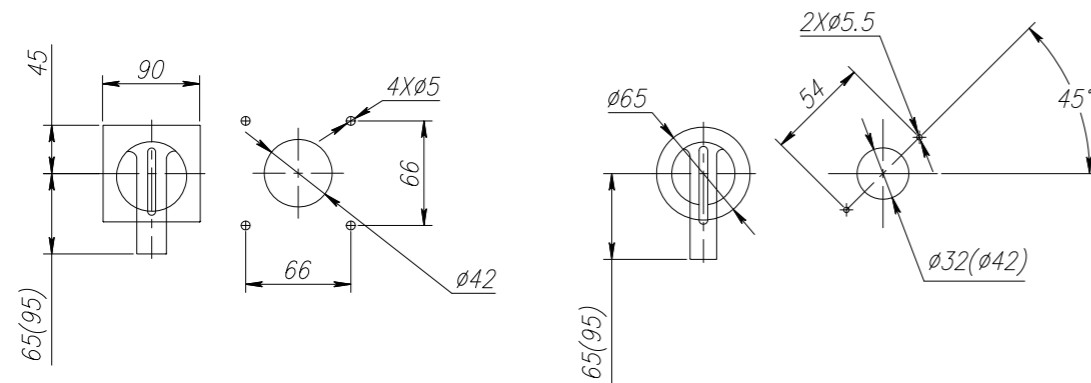
Code	Model number	A	B	C	D	H
1	CQM5-63/100	25	111	55	8	40
2	CQM5-125	30	132	66	8	44
3	CQM5-250	35	126	63	8	44
4	CQM5-400/630	138	195	97.5	10	70
5	CQM5-800	198	243	121.5	10	76

Code	Model number	A	B	C	D	H
1	CQM5L-125	30	132	66	8	44
2	CQM5L-250	35	126	63	8	44
3	CQM5L-400	138	195	97.5	10	70
4	CQM5L-630	198	243	121.5	10	76

Code	Model number	A	B	C	D	H
1	CQM5E-125	30	132	66	8	44
2	CQM5E-250	35	126	63	8	44
3	CQM5E-400	138	195	97.5	10	70
4	CQM5E-630	198	243	121.5	10	76
5	CQM5E-800	198	243	121.5	10	76

Note: General tolerance grade shall be in accordance with GB/T 1804-c.

The figure below shows the rotating handle and installation dimensions of the manual operating mechanism .



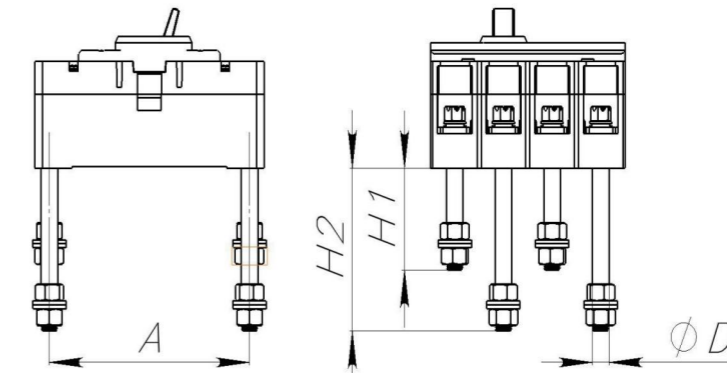
Handle Length Dimensions in the Figure:

For models CQM5-125/250: 65 mm or 95 mm (optional), with 65 mm as the default.  
 For models CQM5-400/630/800: 95 mm.  
 For models CQM5E-125/250: 65 mm or 95 mm (optional), with 65 mm as the default.  
 For models CQM5E-400/630/800: 95 mm.  
 For models CQM5L-125/250: 65 mm or 95 mm (optional), with 65 mm as the default.  
 For models CQM5L-400/630/800: 95 mm.

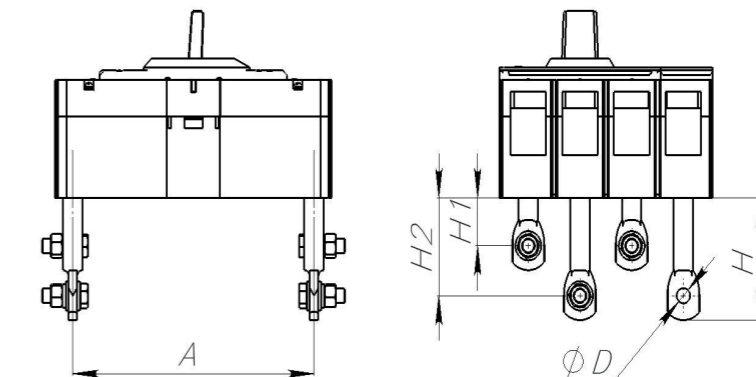
### 2.3 Fixed Type Rear-Mounting Kit

#### Dimensions (mm)

CQM5 / CQM5E / CQM5L - 125/250



CQM5 / CQM5E / CQM5L - 400/630/800



Code	Model number	A	H	H1	H2	D
1	CQM5-63/100	111	/	60.5	102.5	M8
2	CQM5-125	135	/	58	98	M8
3	CQM5-250	144	/	65	104	M8
4	CQM5-400/630	224	102	42	82	M12
5	CQM5-800	243	118	33	98	M16

Code	Model number	A	H	H1	H2	D
1	CQM5L-125	135	/	58	98	M8
2	CQM5L-250	144	/	65	104	M8
3	CQM5L-400	224	102	42	82	M12
4	CQM5L-630	243	118	33	98	M16

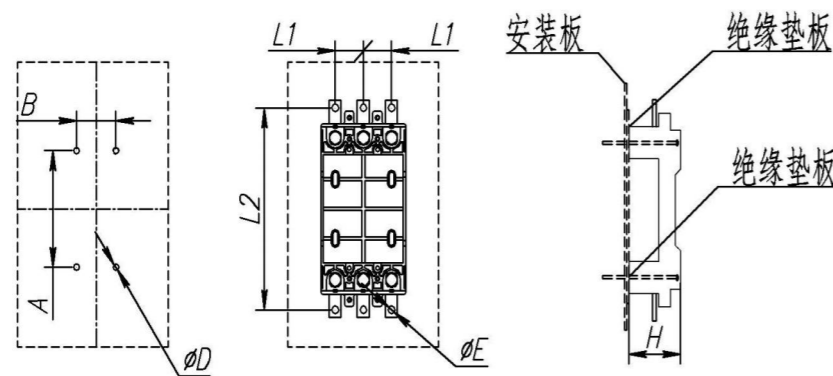
Code	Model number	A	H	H1	H2	D
1	CQM5E-125	135	/	58	98	M8
2	CQM5E-250	144	/	65	104	M8
3	CQM5E-400	224	102	42	82	M12
4	CQM5E-630	243	118	33	98	M16
5	CQM5E-800	243	118	33	98	M16

Note: General tolerance grade shall be in accordance with GB/T 1804-c.

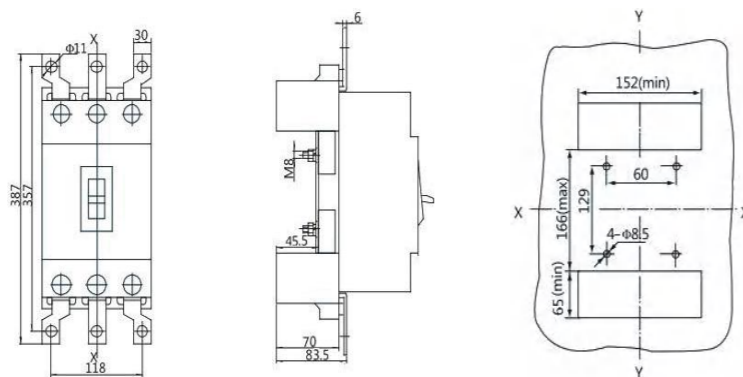
## 2.4 Plug-in Type, Front-of-Panel

### Dimensions (mm)

CQM5 / CQM5E / CQM5L-125/250



CQM5 / CQM5E / CQM5L-400



Code	Model number	A	B	L1	L2	D	E	H
1	CQM5-125	112	30	30	200	5.5	6.5	56
2	CQM5-250	150	35	35	223	5.5	8.5	73

Code	Model number	A	B	L1	L2	D	E	H
1	CQM5E-125	112	30	30	200	5.5	6.5	56
2	CQM5E-250	150	35	35	223	5.5	8.5	73

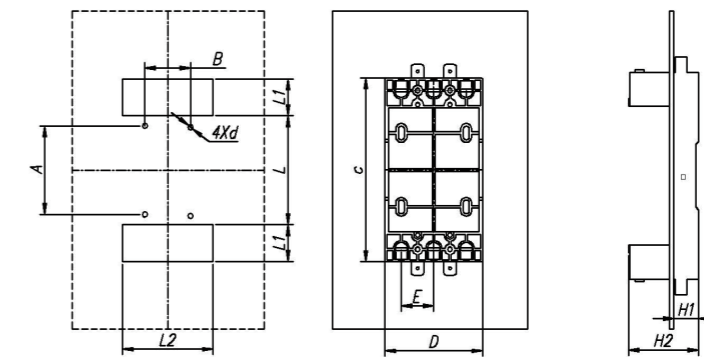
Code	Model number	A	B	L1	L2	D	E	H
1	CQM5L-125	112	30	30	200	5.5	6.5	56
2	CQM5L-250	150	35	35	223	5.5	8.5	73

Note: General tolerance grade shall be in accordance with GB/T 1804-c.

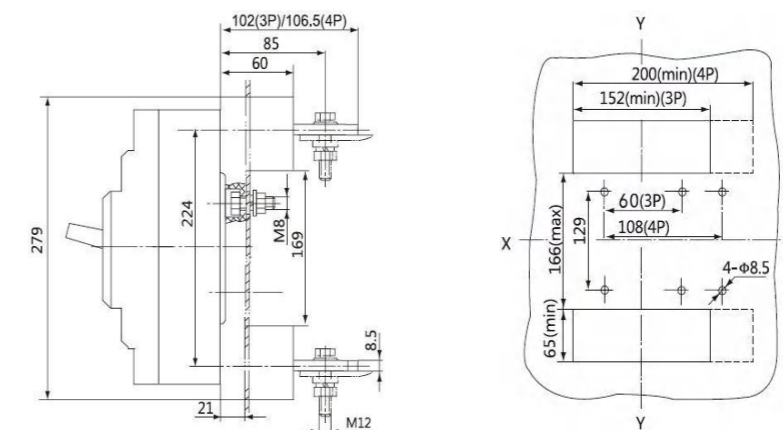
## 2.5 Plug-in Type, Rear-of-Panel

### Dimensions (mm)

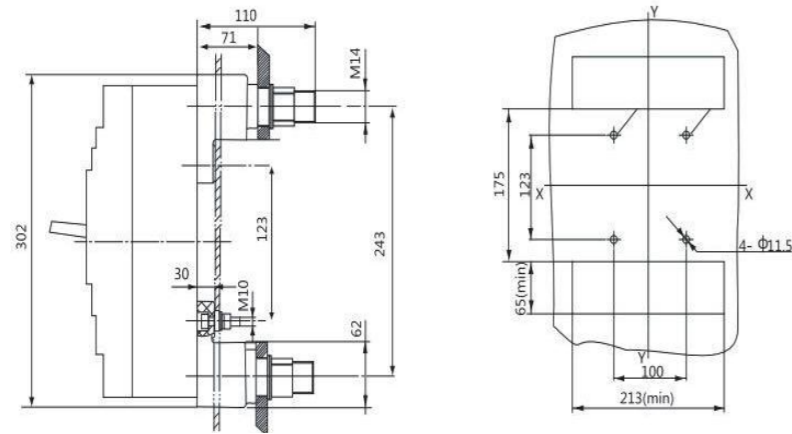
CQM5 / CQM5E / CQM5L-125/250



CQM5 / CQM5E / CQM5L-400



CQM5 / CQM5E / CQM5L-630/800



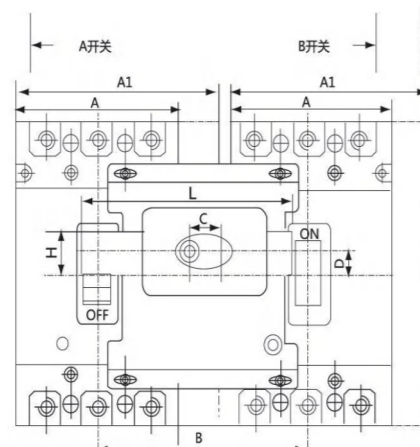
Code	Model number	A	B	L	L1	L2	d	C	D	E	H1	H2
1	CQM5-125	67	60	90	51	94	6.5	162	90	30	20	56
2	CQM5-250	74	70	100	55	110	6.5	179	105	35	27	73

Code	Model number	A	B	L	L1	L2	d	C	D	E	H1	H2
1	CQM5E-125	67	60	90	51	94	6.5	162	90	30	20	56
2	CQM5E-250	74	70	100	55	110	6.5	179	105	35	27	73

Code	Model number	A	B	L	L1	L2	d	C	D	E	H1	H2
1	CQM5L-125	67	60	90	51	94	6.5	162	90	30	20	56
2	CQM5L-250	74	70	100	55	110	6.5	179	105	35	27	73

Note: General tolerance grade shall be in accordance with GB/T 1804-c.

## 2.6 Mechanical Interlock



Parameter	CQM5-125	CQM5-250	CQM5-400	CQM5-630/800
A (3P)	90	105	150	210
B (3P)	120	130	180	243
C (3P)	45	50	57	58
D (3P)	14	16.5	10	20
L (3P)	134	140.5	190	240
H (3P)	22	22	30	20
A (4P)	120	140	198	280
B (4P)	150	170	230	310
C (4P)	45	50	57	58
D (4P)	14	16.5	10	20
L (4P)	164	233	240	320
H (4P)	22	22	30	30

Parameter	CQM5E-125	CQM5E-250	CQM5E-400	CQM5E-630/800
A (3P)	90	105	150	210
B (3P)	120	130	180	243
C (3P)	45	50	57	58
D (3P)	14	16.5	10	20
L (3P)	134	140.5	190	240
H (3P)	22	22	30	20
A (4P)	120	140	198	280
B (4P)	150	170	230	310
C (4P)	45	50	57	58
D (4P)	14	16.5	10	20
L (4P)	164	233	240	320
H (4P)	22	22	30	30

Parameter	CQM5L-125	CQM5L-250	CQM5L-400	CQM5L-630/800
A (3P)	90	105	150	210
B (3P)	120	130	180	243
C (3P)	45	50	57	58
D (3P)	14	16.5	10	20
L (3P)	134	140.5	190	240
H (3P)	22	22	30	20
A (4P)	120	140	198	280
B (4P)	150	170	230	310
C (4P)	45	50	57	58
D (4P)	14	16.5	10	20
L (4P)	164	233	240	320
H (4P)	22	22	30	30

Notes: a. Units: mm b. Undefined tolerances comply with GB/T 1804-2000 medium grade (m)