

Injet Mini



COMPACT BUT POWERFUL

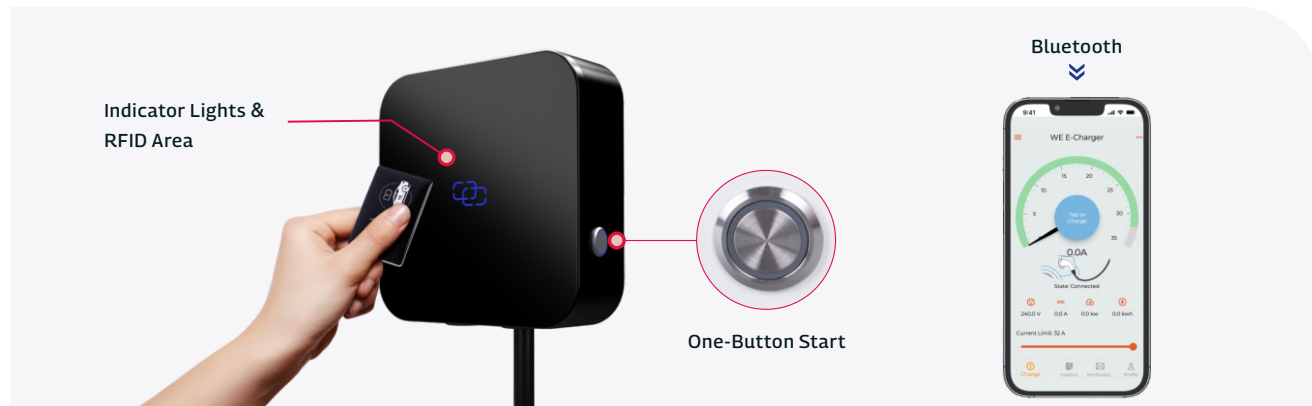
- Compact design with different colors
- Select from 7kW, 11kW or 22kW version
- Type 2 connectors with 5 or 7.5 meters cable
- Easy & secure to use - 3 types of start modes
- CEE connector optional for simplified installation



Wall mounting with Cable Organiser



Floor Mounting with Pole



SECURE AND RELIABLE

- CE TÜV SÜD Certified
- Multiple safety & protection checks
- RCD sensor 6mA (DC)
- Dust & water proof with IP65

SMART BUT AFFORDABLE

- iOS & Android app connected through bluetooth
- Scheduled charging
- Adjustable charging current
- One-button start optional

Specification of Injet Mini

Item	Injet Mini 7kW	Injet Mini 11kW	Injet Mini 22kW
Model NO.	HN10132	HN10316	HN10332
Maximum Power	7kW/32A @230VAC	11kW/16A @400VAC	22kW/32A @400VAC
Basic info	Plug & Cord	Type 2 with 5 / 7.5 meters cable	
	Dimension(H*W*D)mm	180*180*65	
	Plastic	PC+ASA	
	Colour	Black or White	
Features	Indicator	Yes	
	RFID	Yes	
	Bluetooth	Yes	
Safety	APP	iOS / Android connected through bluetooth	
	Ingress protection	IP65, IK10	
	Residual current protection	6mA DC	
Safety	Over load protection	Yes	
	Over/under voltage protection	Yes	
	Short circuit protection	Yes	
	Earth leakage protection	Yes	
	Ground protection	Yes	
	Surge protection	Yes	
	Over temperature	Yes	
	Certification	SUD TÜV CE (LVD, EMC, RoHS), CE-RED	
	Certification standard	EN IEC 61851-1, EN IEC 61851-21-2	
	Environment	Installation	Wall/Pole mounted, CEE adapter optional
Storage temperature		-40~75°C	
Work temperature		-30~55°C	
Work humidity		≤ 95%RH, no water droplet condensation	
Work altitude		< 2000m	