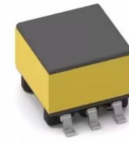


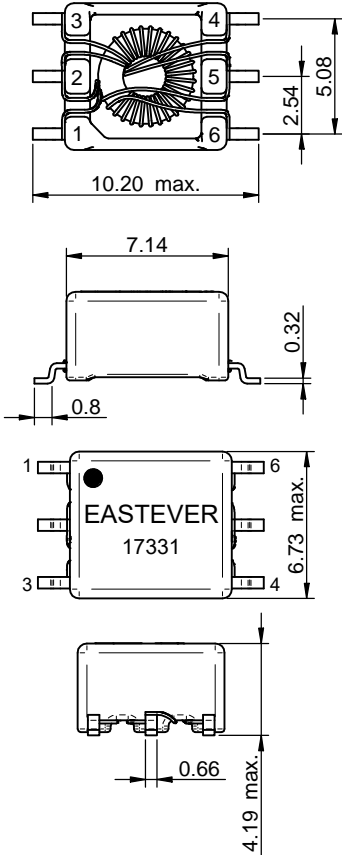
Push-Pull Transformer

EPF-1006-17331

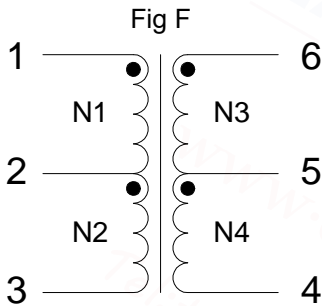
2024-11-28 Rev. 0



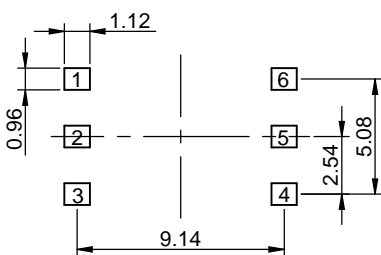
Outline Drawing(mm)



Electrical structure



Recommended layout(mm)



Features

- 260°C Reflow Compatible
- RoHS compliant and lead free
- Operating temperature range: -40 up to +125 °C
- Storage Conditions (for single parts):-20 up to +60 °C
- Storage Conditions (in original packaging):< 40 °C ; < 75 % RH

Applications

- Solar inverters
- Process control
- AC motor drives
- Medical equipment
- Industrial automation
- Polyphase energy meters
- Protection relays and IEDs
- Isolated gate driver power supplies
- PLC analog and digital I/O modules
- RS-232, SPI, I2C, lower-power LAN
- Uninterruptible power supplies (UPS)
- Isolated interface power supply for CAN, RS-485, RS-422

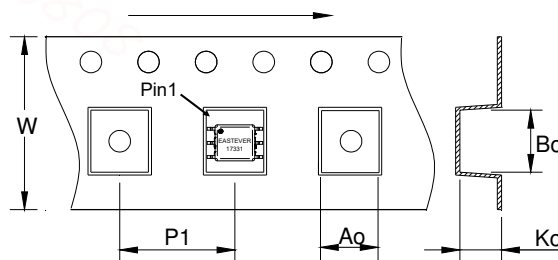
Electrical Properties: @ 25°C

Properties		Test conditions	Value	Unit	Tol.
Inductance	L	N1+N2/ 10 kHz/ 100 mVAC	4	μH	min.
Turns Ratio	n	N1+N2 : N3+N4	1.94:1		
DC Resistance 1	R _{DC 1}	N1+N2/ 20 °C	1.4	Ω	max.
DC Resistance 2	R _{DC 2}	N3+N4/ 20 °C	0.8	Ω	max.
Voltage-μSecond	∫Udt	N1/ bipolar waveform	41	Vμs	
Interwinding Capacitance	C _{WW}	N1+N2 => N3+N4/ 100kHz/ 10mVAC/ C _s	25	pF	typ.
Insulation Test Voltage	V _T	N1,2 => N3,4	2500	V (AC)	

Typical Application:

Properties		Value	Unit
Input	V _{in}	24	V (DC)
Output Current 1	V _{Out1}	12	V (DC)
Output Current 1	I _{Out1}	0.5	A
Switching Frequency	f _{switch}	350-620	kHz

Carrier Tape Orientation



Tape & Reel Information

Parameter	Units	Value
Qty per reel	PCS	500
Reel Size	mm	330
Tape Width	mm	24.00
P1	mm	12.00
A0	mm	6.80
Bo	mm	10.40
Ko	mm	4.10