



Escalator

Electrical Schematic Diagrams



Technology Center Contacts

Email

Lift-technology@yongxiangroup.com

WhatsApp

Pre-sales Service +86 15339047757

After-sales Service +86 13379038227

MON-ES-20210101-3-2025-0007

Components code	Name of the element	specifications	Installation position	note
KMU	Uplink contactor	LC1/D3201	Upper control box	
KUD	Downlink contactor	LC1/D3201	Upper control box	
KMT	Triangle run contactor	LC1/D3201	Upper control box	
KMS	Star runs the contactor	LC1/D3201	Upper control box	
RUN	Runs the contactor	LC1/D3201	Upper control box	
JXW	Phase sequence relay	LC1/D3201	Upper control box	
OCR	Motor thermal relay	3UA59 25A-40A	Upper control box	
FU	2P air switch	DZ47-2P10A	Upper control box	
TDY	Working transformer	InAC380V, OutAC110V(87VA)、AC36V(10VA)	Upper control box	
TPB1	Switching power supply	HF100W-S-24 (100W,DC24V)	Upper control box	schneider
TPB2	Switching power supply	ABL2REM24015H(35W,DC24V)	Upper control box	schneider
GFCI 1	2P Leak protect switch		Upper control box	
FU1-FU3	The insurance holder	C6/1P	Upper control box	
XSZ-U	Three flat socket	AC220V	Upper control box	
XSI-U	Two flat socket	AC36V	Upper control box	
XSZ-D	Three flat socket	AC220V	Downlink control box	
XSI-D	Two flat socket	AC36V	Downlink control box	
XP1	Overhaul additional plug		Upper, downlink control box	
SXI-U	Repair the socket		Upper control box	
SXI-D	Repair the socket		Downlink control box	
JM	Service relay	HH52P (DC24V)	Upper control box	
XLB	Repair handle and plug		Maintenance and repair equipment	
CS2	Upper inlet and outlet photoelectric		Upper entrance	
CS3				
CS4	Upper inlet and outlet photoelectric		Downlink entrance	
CS5				
JAQ	Safety contactor		Upper control box	
JBZ	Lock brake contactor		Upper control box	
KDU	Upgoing direction indicating relay		Upper control box	

借通用件登记

插图

校核

图底图号

签字

日期

Components code	Name of the element	specifications	Installation position	note
KDD	Downlink direction indicating relay		Upper control box	
BUZ	Bell	AC220V	Upper,downlink control box	
PCTB	Escalator synchronous switching card	MCTC-TBB-A	Upper control box	
KDD	Drive chain switch	ZRA236-11Z	By the driving chain	
KDD1	Drive chain switch	ZRA236-11Z	By the driving chain	
SRU	Safety switch of upper right comb tooth plate	ZRA236-11Z	Upper comb tooth front plate right bottom	
SLU	Safety switch of upper left comb tooth plate	ZRA236-11Z	Upper comb tooth front plate left bottom	
KLU	Safety switch of upper right comb tooth plate	TRA236-11Z	Upper left entrance apron board inside	
KRU	Top right exit safety switch	TRA236-12Z	Upper right entrance apron board	
WRU	Upper right apron panel safety switch	D4MC-5000 OMRON Micro switch	Upper right apron board inside	
WLU	Upper left apron panel safety switch	D4MC-5000 OMRON Micro switch	Upper left apron board inside	
TU	Upper ladder sag safety switch	ZRA236-11Z	The cascade lower down inside the skeleton	
TD	Downlink ladder sag safety switch	ZRA236-11Z	The cascade lower down inside the skeleton	
WLD	Lower left apron board safety switch	D4MC-5000 OMRON Micro switch	Inside of lower left apron board	
WRD	Lower right apron board safety switch	D4MC-5000 OMRON Micro switch	Inside of lower right apron board	
KRD	Lower right exit/exit safety switch	TRA236-11Z	Lower left entrance Inside the apron board	
KLD	Lower left exit/exit safety switch	TRA236-11Z	Lower right entrance Inside the apron board	
SLD	Safety switch of left comb tooth plate	ZRA236-11Z	Lower comb tooth front plate lower left	
SRD	Safety switch of right comb tooth plate	ZRA236-11Z	Lower comb tooth front plate right bottom	
CR	Right cascade chain safety switch	ZRA236-11Z	The right of cascade chain	
CL	Left cascade chain safety switch	ZRA236-11Z	The right of cascade chain On the tensioning device	
KAX	Left handrail with break switch	LX25-11 Travel switch	Lower left handrail down	
KAS	Right handrail with break switch	LX25-11 Travel switch	Lower right handrail down	
IU	Emergency stop button for upper control box	ZB2-BE102C	Upper control box	
DU	Top emergency stop button	KH-16	Escalator top	
STIU	Upper maintenance emergency stop button		Upper control box	
STDU	Downlink maintenance emergency stop button		Downlink control box	
ID	Emergency stop button for lower control box	ZB2-BE102C	Downlink control box	
DU	Bottom emergency stop button	KH-16	The lower escalator	

借通用件登记

插图

校核

图底图号

签字

日期

Components code	Name of the element	specifications	Installation position	note
SG	Access box common end		Overhaul handle	
SU	Access box up button		Overhaul handle	
SD	Access box down button		Overhaul handle	
SA-X	Lower key switch	KH-16	The lower escalator	
SA-S	Upper key switch	KH-16	Escalator top	
STT	Emergency stop switch of service box		Overhaul handle	
SBK1-4	Lock check switch	D4N-4132/4131 (omron) TS236-02Z/11Z (Schmeisel)	Left and right side of main engine	
JDDL	Additional brake contactor	AC110V LC1/D0901	On the control box	schneider
SDT	Additional brake detection switch	D4N-4132 (omron) TS236-02Z/11Z (Schmeisel)	The upper computer room	
SQ1-SQ3	Access cover switch	D4N-4132/2B64-E1 (omron) TS236-02Z/11Z (Schmeisel)	Upper and lower machine room	
RST	PESfault reset switch		In control cabinet	
SPA	Motor speed proximity switch	schneider XS2 18BLNAL2C Pepperl + fuchs NBN8-18GM50-E0-M0	Motor flywheel under	NPNoutput
SPU1	Missing switch on upper step	schneider XS2 30BLNAL2C Pepperl + fuchs NBN15-30GM50-E0-M0		NPNoutpu
SPD1	Missing switch on lower step	schneider XS2 30BLNAL2C Pepperl + fuchs NBN15-30GM50-E0-M0		NPNoutpu
SPL	Left handrail with speed switch	schneider XS2 12BLNAL2C Pepperl + fuchs NBN4-12GM50-E1-M0		NPNoutpu
SPR	Right handrail with speed switch	schneider XS2 12BLNAL2C Pepperl + fuchs NBN4-12GM50-E2-M0		NPNoutpu
LMX	Down direction indicator light	DC24V		
LMS	Up direction indicator light	DC24V		

借通用件登记

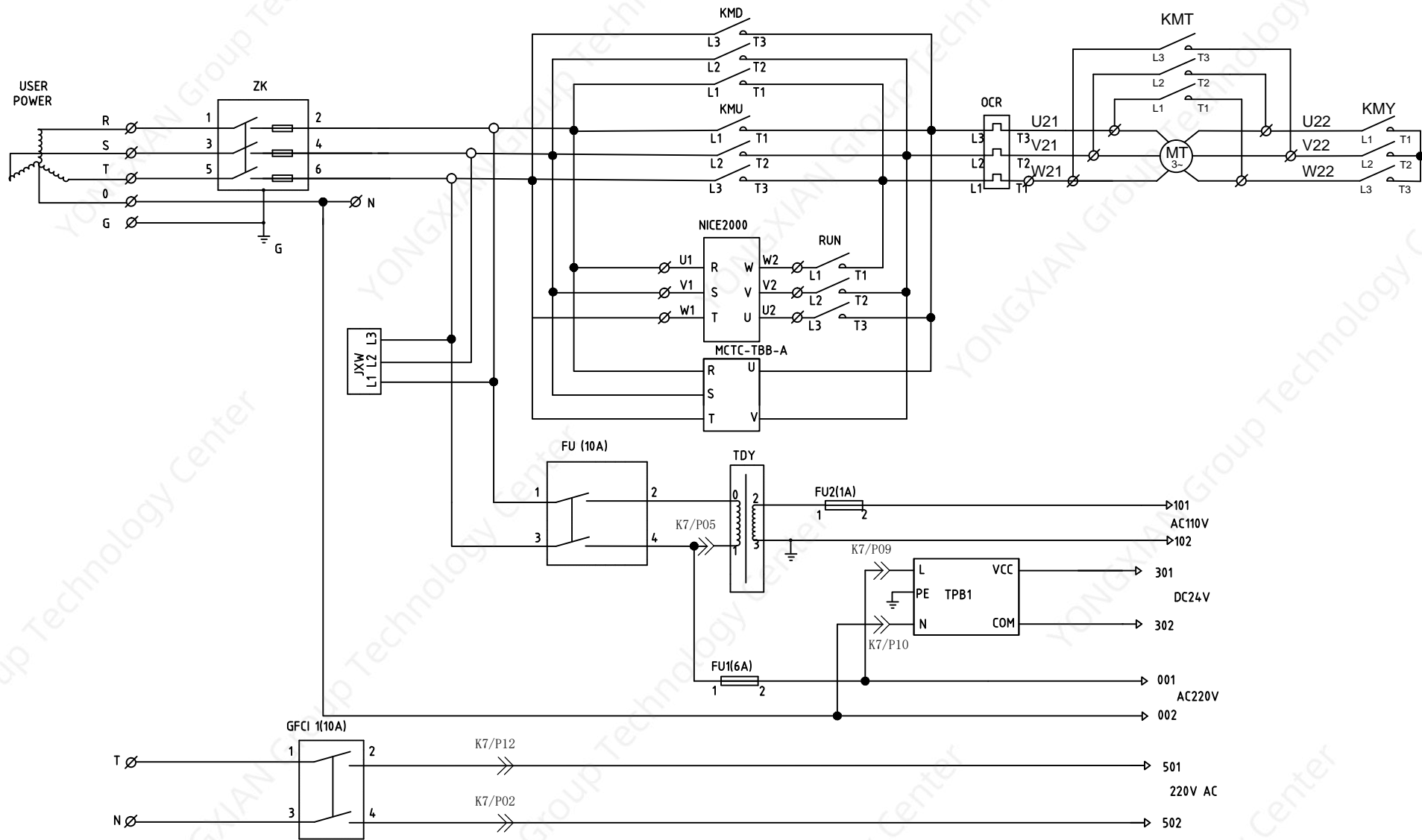
插图

标注

图底图号

签字

日期



借通用件登记

插图

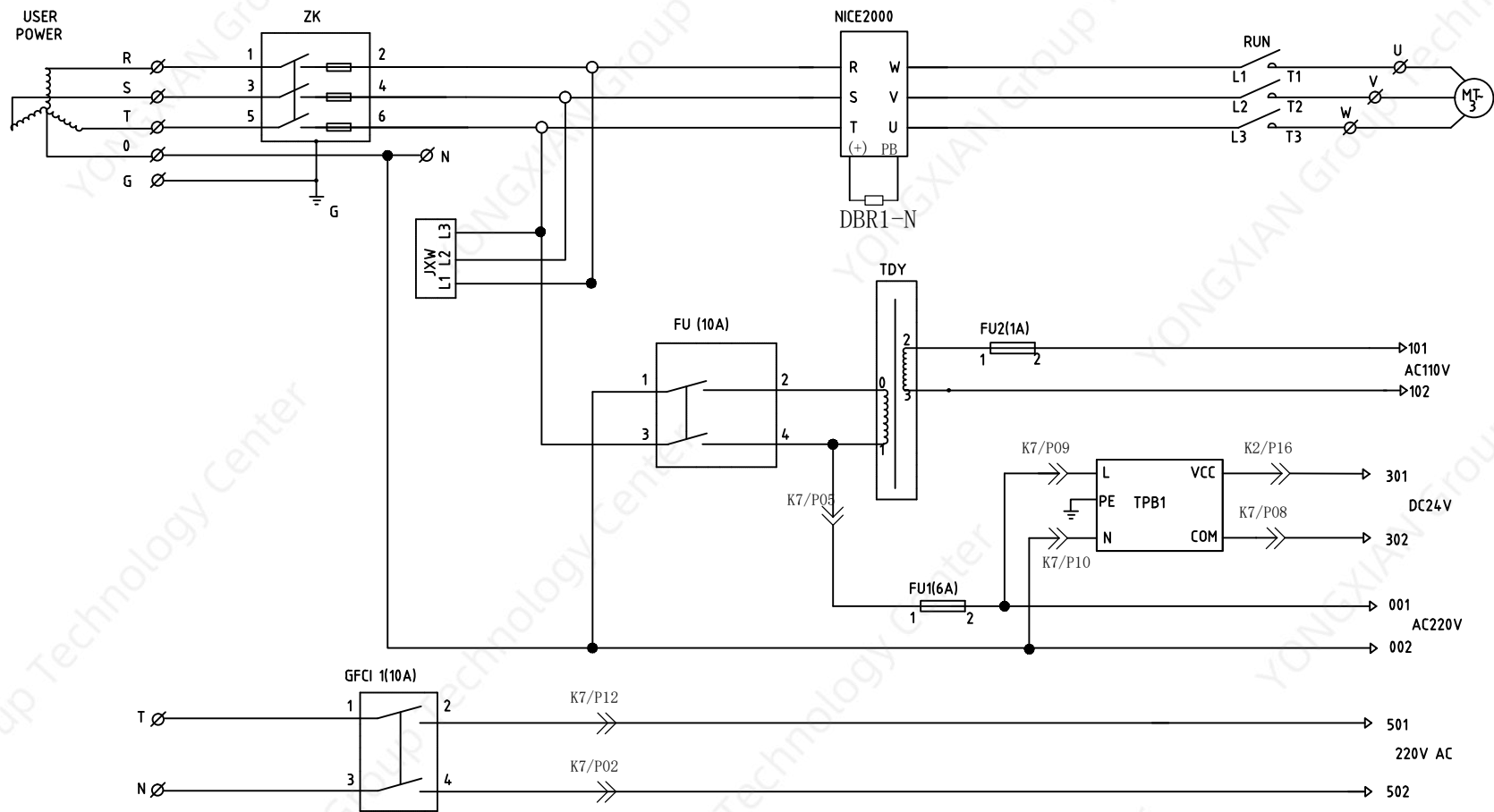
校核

图底图号

签字

日期

NICE 2000 NEWS			A series of apply to escalator
			The triangle Main power circuit
design	date		
check	date		
audit	date		



1, Users need to provide three-phase five-wire power supply that meets the requirements according to civil engineering requirements .

NICE 2000 NEWS			Applicable to escalator series
			Full frequency conversion main power circuit
design		date	
check		date	
audit		date	

借通用件登记

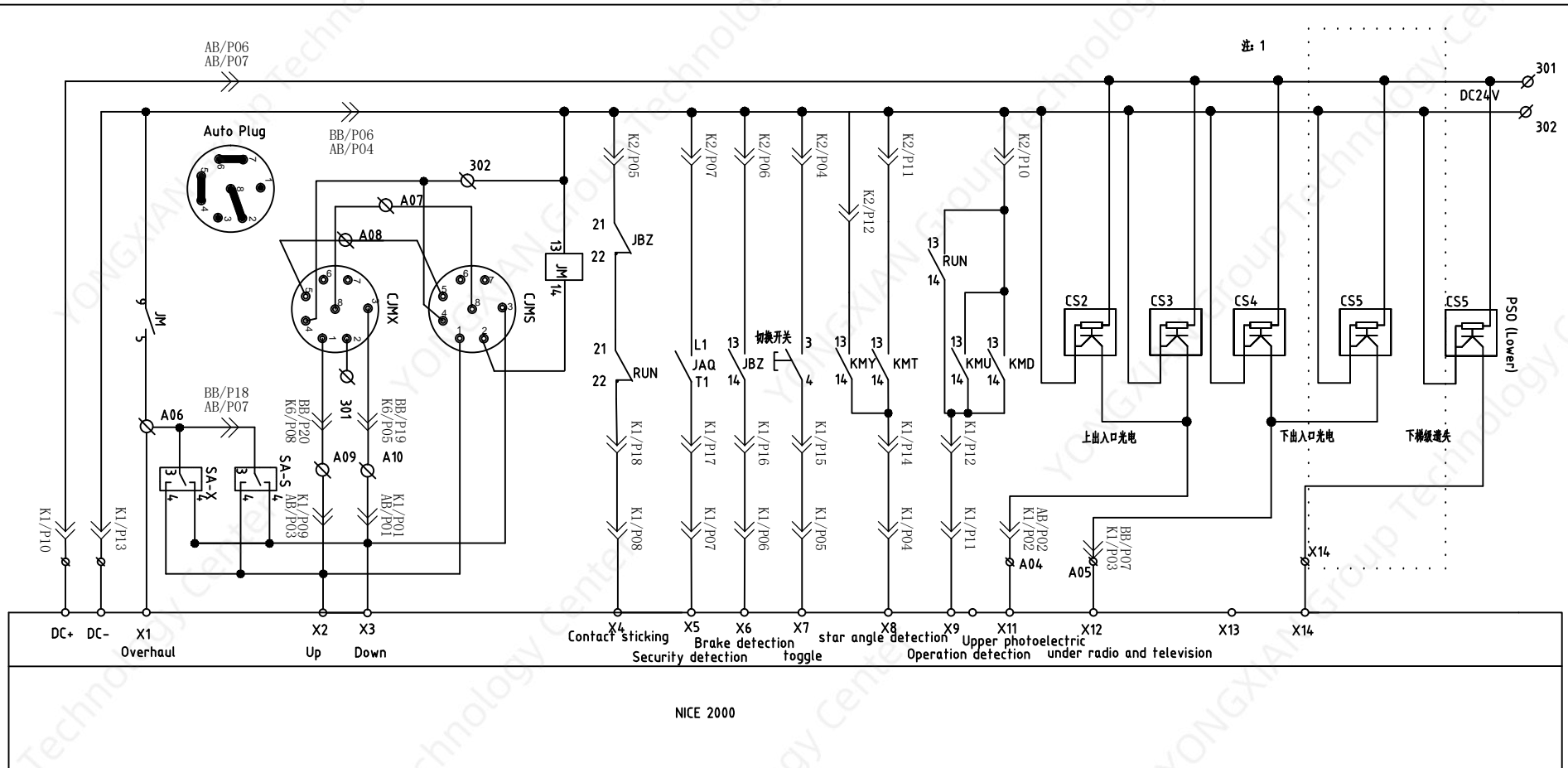
插图

校核

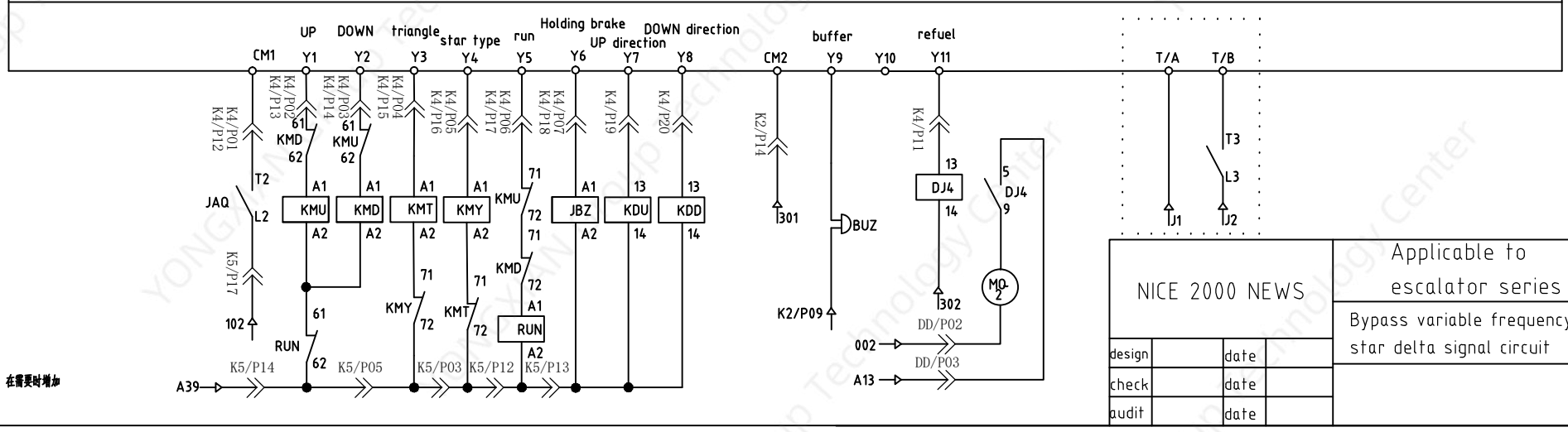
图底图号

签字

日期



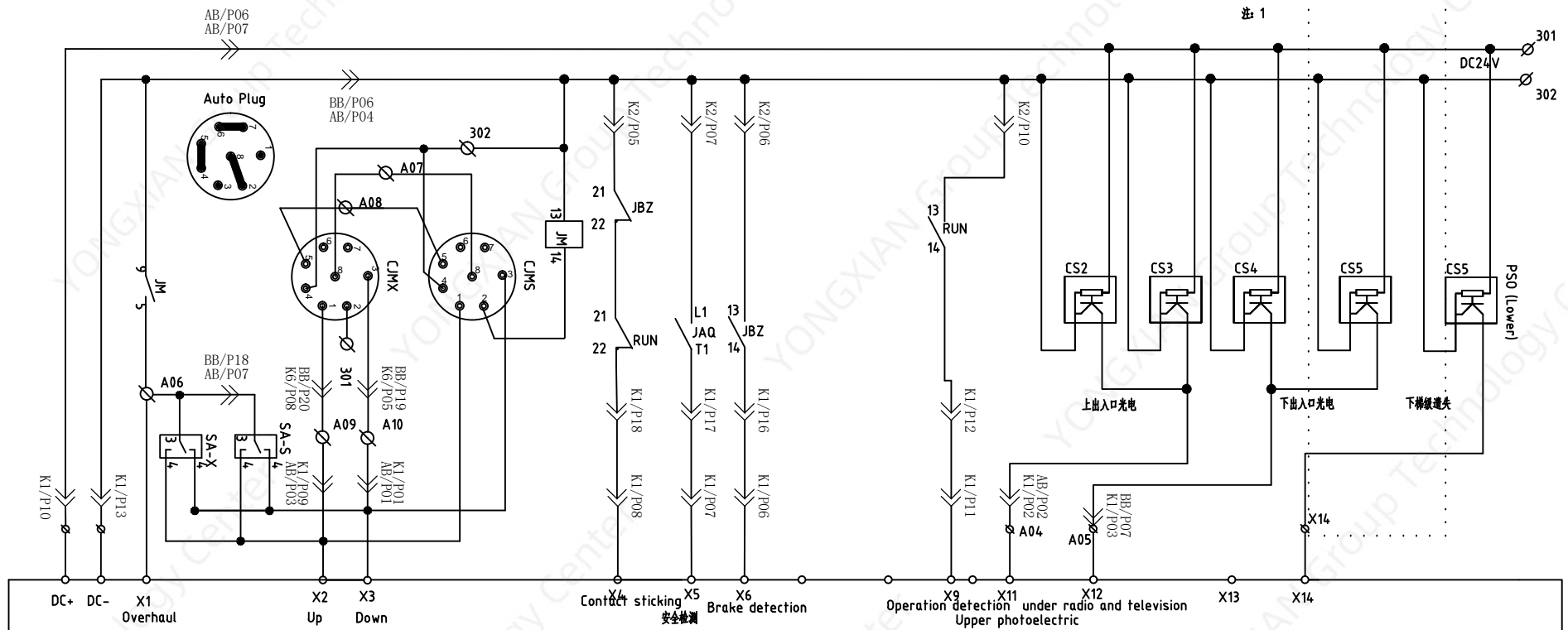
NICE 2000



design		date		Applicable to escalator series Bypass variable frequency star delta signal circuit
check		date		
audit		date		

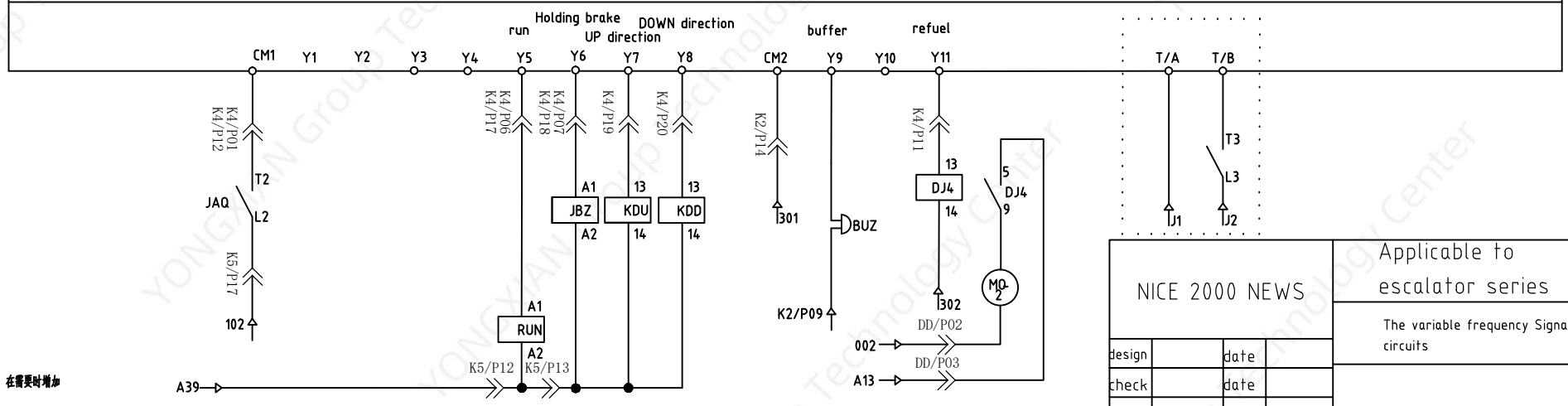
借通用件登记
 插图
 校核
 原底图号
 签字
 日期

注1: 在需要时增加



NICE 2000

扩展板



NICE 2000 NEWS		Applicable to escalator series	
		The variable frequency Signal circuits	
design	date		
check	date		
audit	date		

借通用件登记

插图

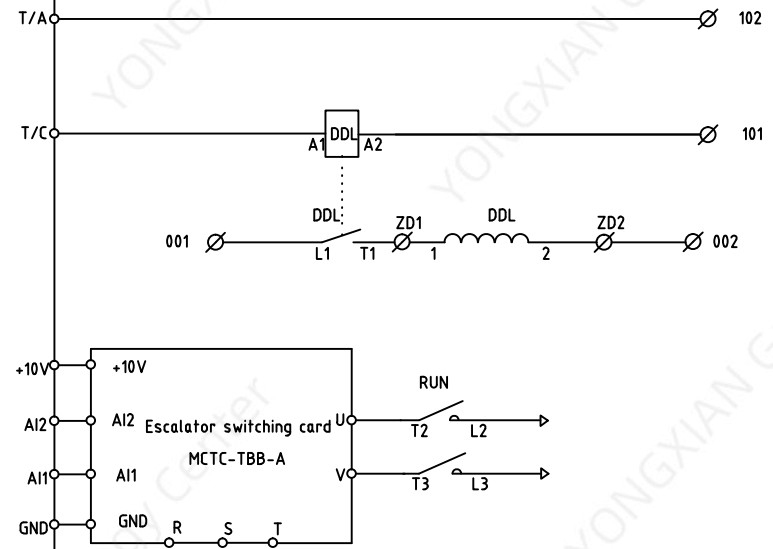
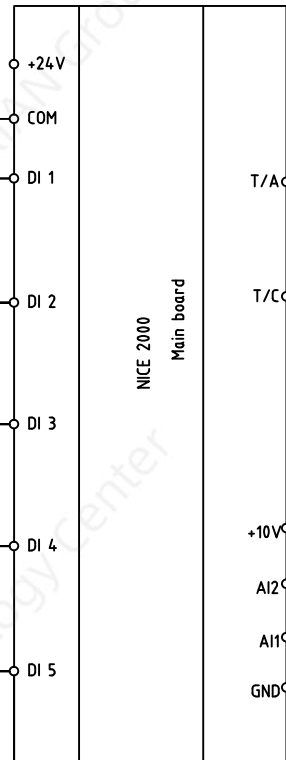
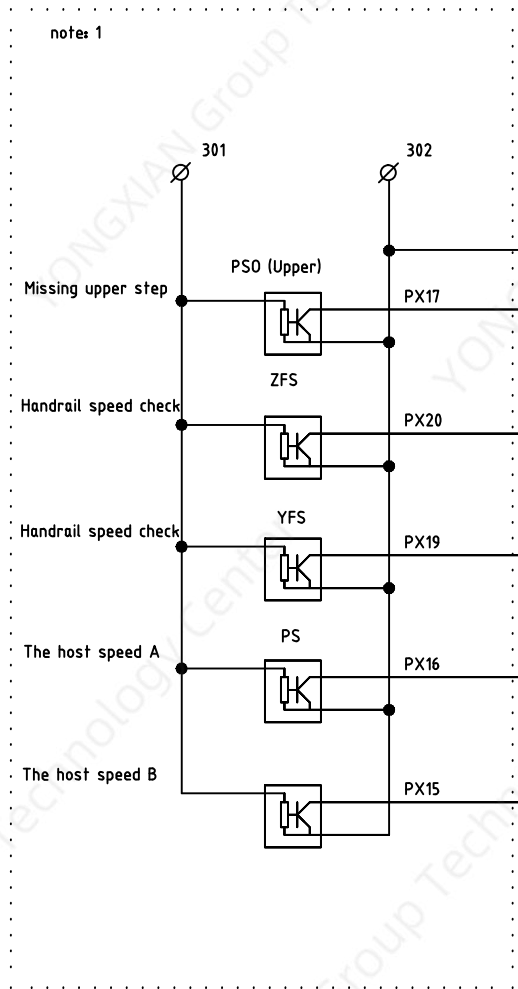
校核

图底图号

签字

日期

注1: 在需要时增加

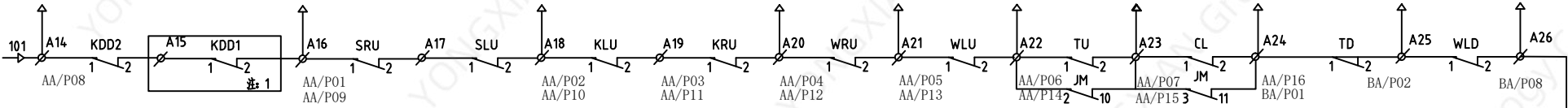


借通用件登记
描 图
校 核
图底图号
签 字
日 期

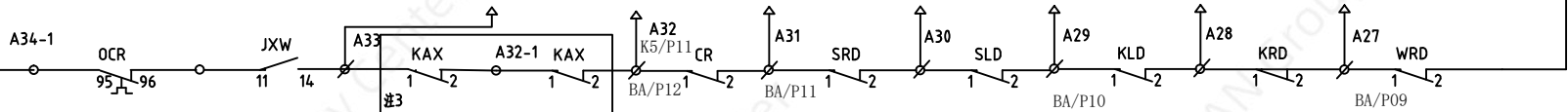
note1: add when you need

NICE 2000 NEWS			Applicable to escalator series
design		date	
check		date	
audit		date	

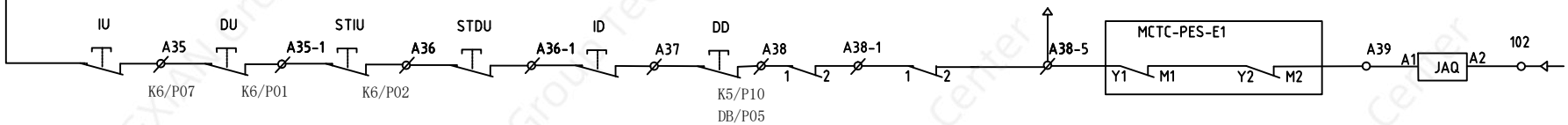
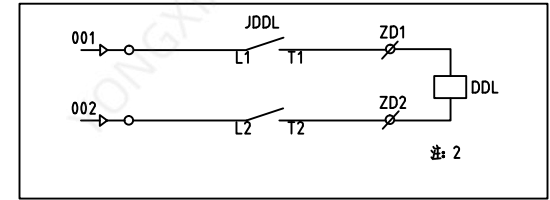
故障代码	E01	E02		E03		E04		E05	E06	E07	
名称	驱动链 Driving chain	上梳齿 (右) The comb (right)	上梳齿 (左) Tooth above (left)	上出入口 (左) In and out (left)	上出入口 (右) In and out (right)	上右围裙板 Switch	上左围裙板 Apron board (up)	上梯级下陷 Upper sinks (left)	下梯级下陷 subsidence	下左围裙板 Apron board	下右围裙板 Apron board



电机热保护 Motor thermal protection		相序保护 Phase sequence	水位开关 level switch	下梯级链 (左) cascade chain (left)	下梯级链 (右) chain (left)	下梳齿 (右) chain (right)	下梳齿 (左) tooth (left)	下出入口 (左) inward and outward (left)	下出入口 (右) In and out (right)
-----------------------------------	--	------------------------	----------------------	----------------------------------	--------------------------	--------------------------	-------------------------	---------------------------------------	--------------------------------



E12	E13	E14	E15	E16	E17	E18	E19
上梯控制柜急停 ES for upper cabinet	上梯检修急停 ES for upper maintenance	上梯入口急停 ES for upper entrance	下梯检修急停 ES for low maintenance	下梯控制柜急停 ES for low cabinet	下梯入口急停 ES for low entrance	左扶手带断带 Left armrest strap broken	右扶手带断带 Right armrest strap broken



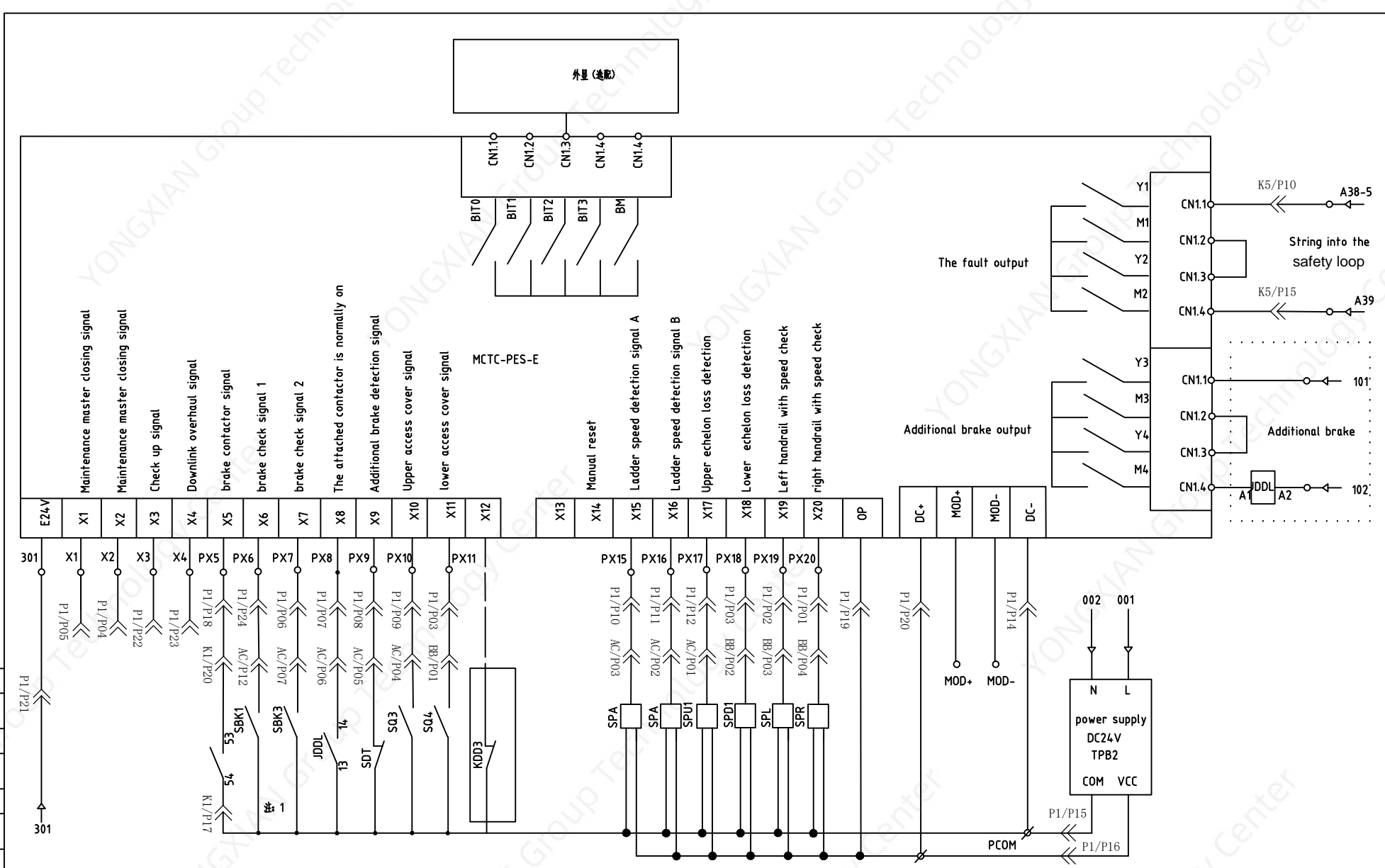
注1: 单驱动时用一个KDD开关, 双驱动时多串联一个开关KDD1。

注2: 当提升高度大于6M时增加制动力器时。

注3: 需要时增加。

NICE 2000 NEWS		适用于自动扶梯系列	
		安全信号回路	
设计	日期		
校验	日期		
审核	日期		

借通用件登记
描图
校核
图底图号
签字
日期



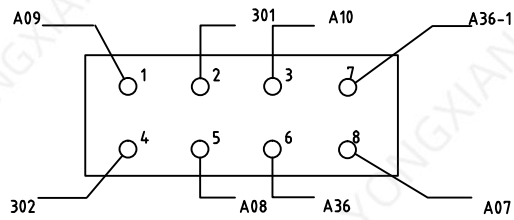
借通用件登记
 插图
 校核
 图底图号

note1: Short connect X8 and X9 to PCOM if there is no additional safety brake.
 note2: If there is no brake switch, short connect X6 and X7 with PCOM. If the working brake USES a test switch, short connect X6 and X7.

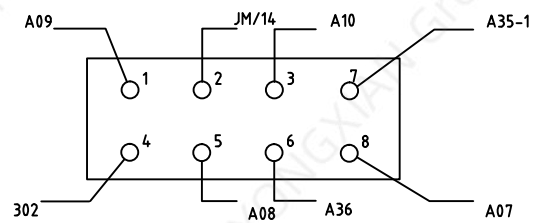
NICE 2000 NEWS			Applicable to escalator series	
			Accessory safety circuit detection circuit	
design		date		
check		date		
audit		date		

签字
 日期

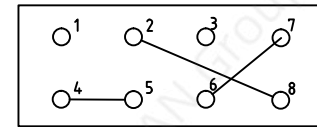
SXI-D Repair the socket



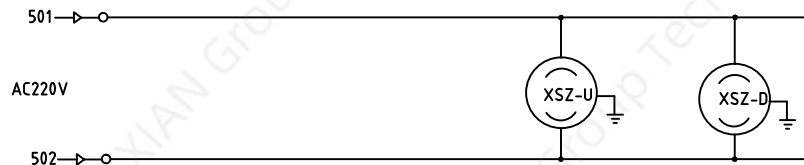
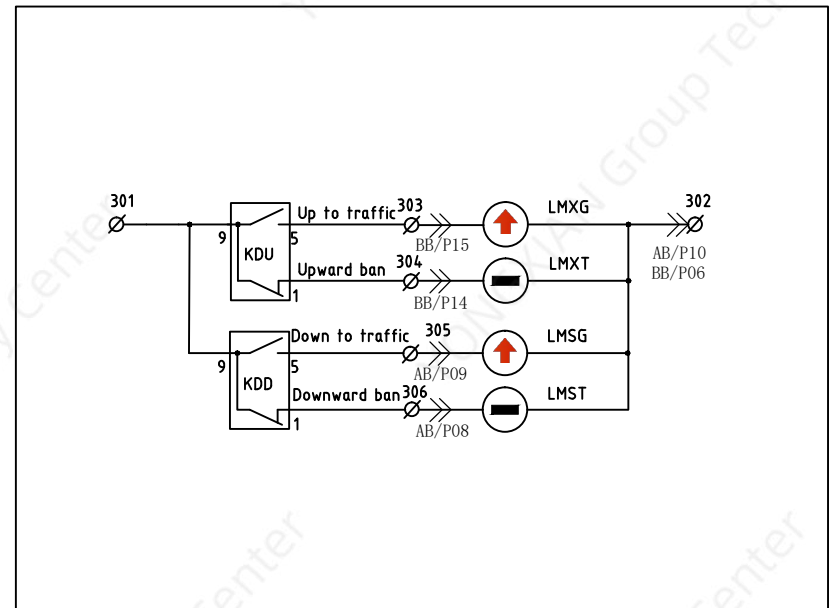
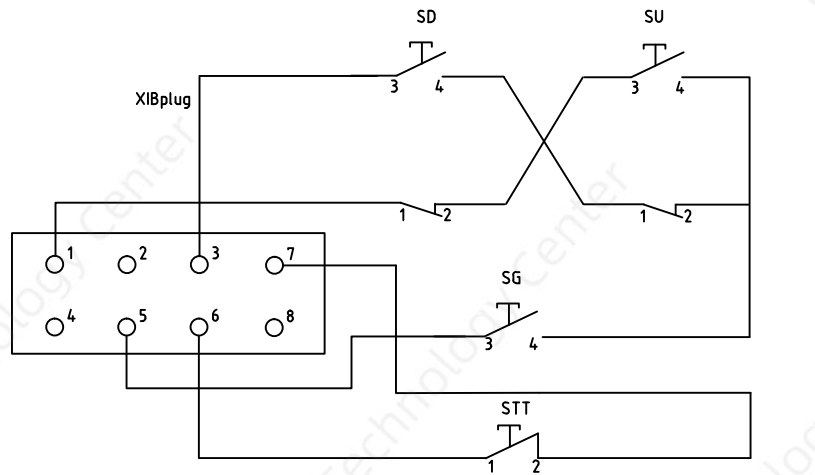
SXI-U Repair the socket



XPI-U, XPI-D Repair the socket cover



AA/P08



NICE 2000 NEWS			Applicable to escalator series
design	date		
check	date		
audit	date		

借通用件登记

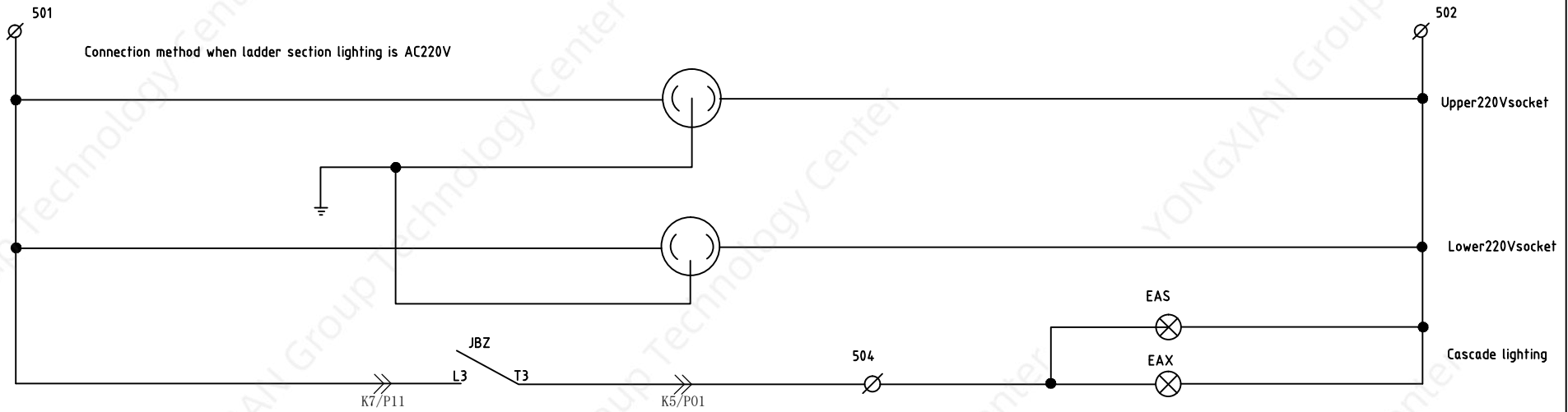
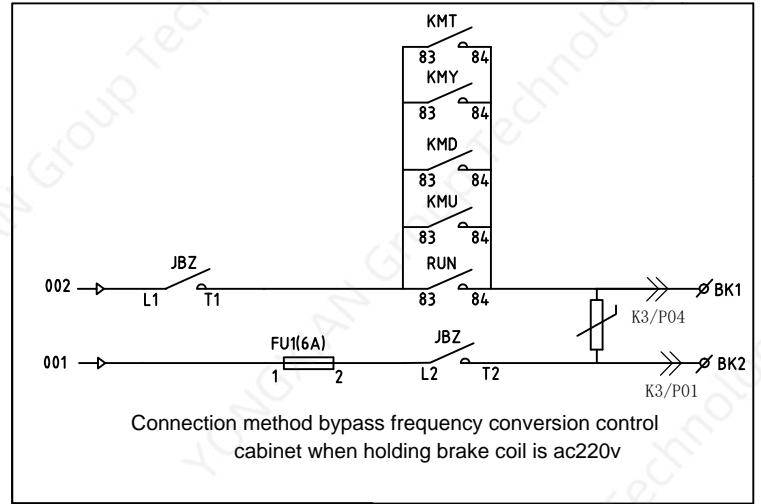
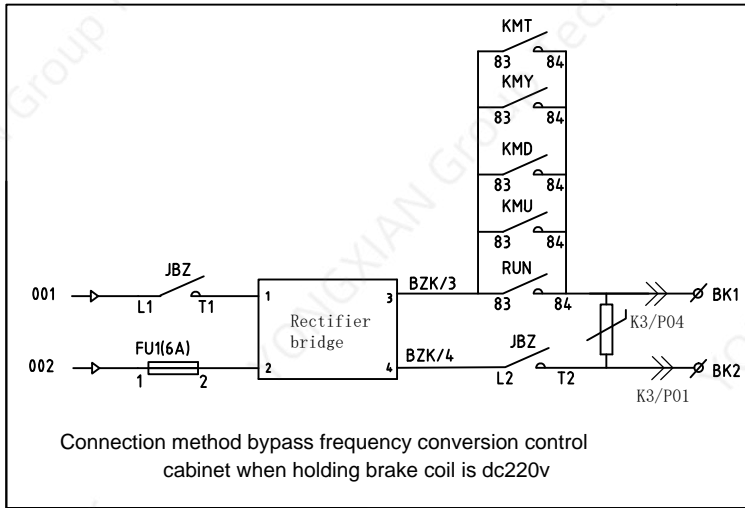
插图

校核

图底图号

签字

日期



借通用件登记

插图

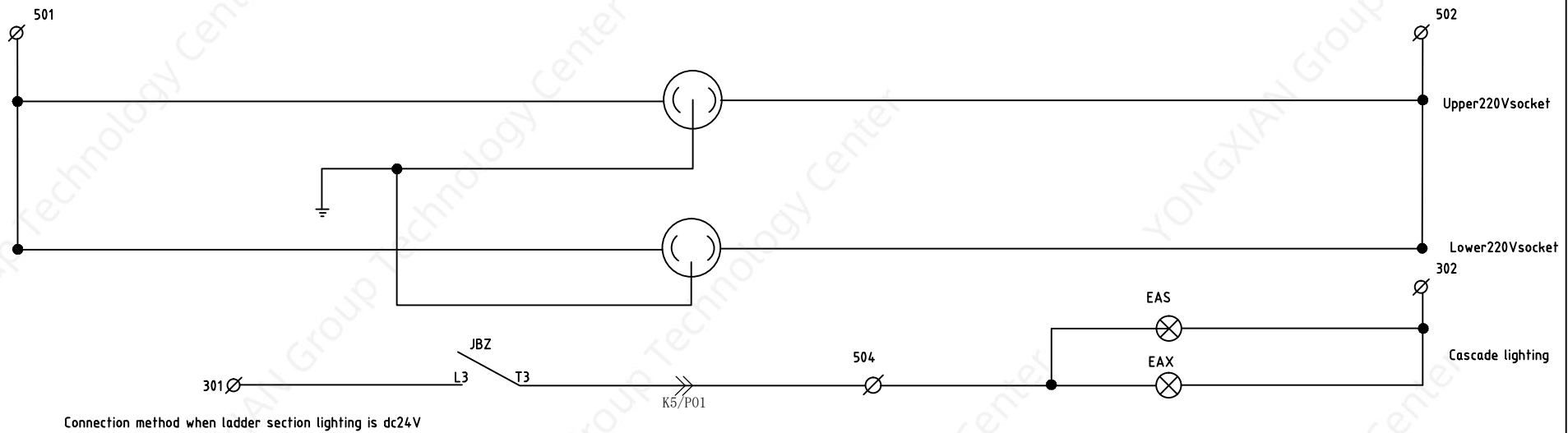
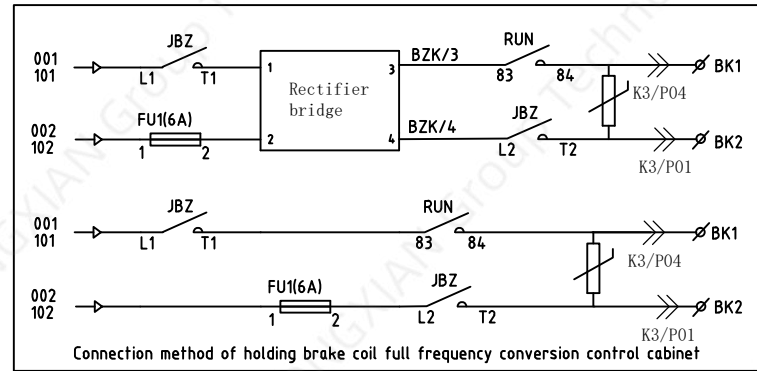
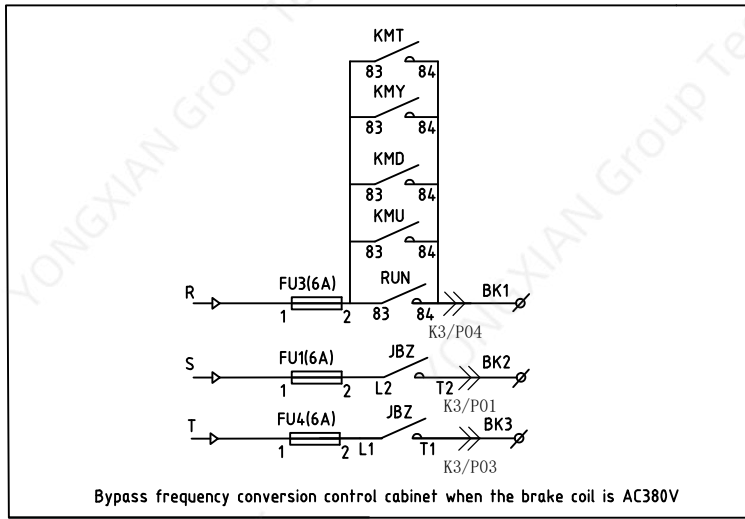
校核

图底图号

签字

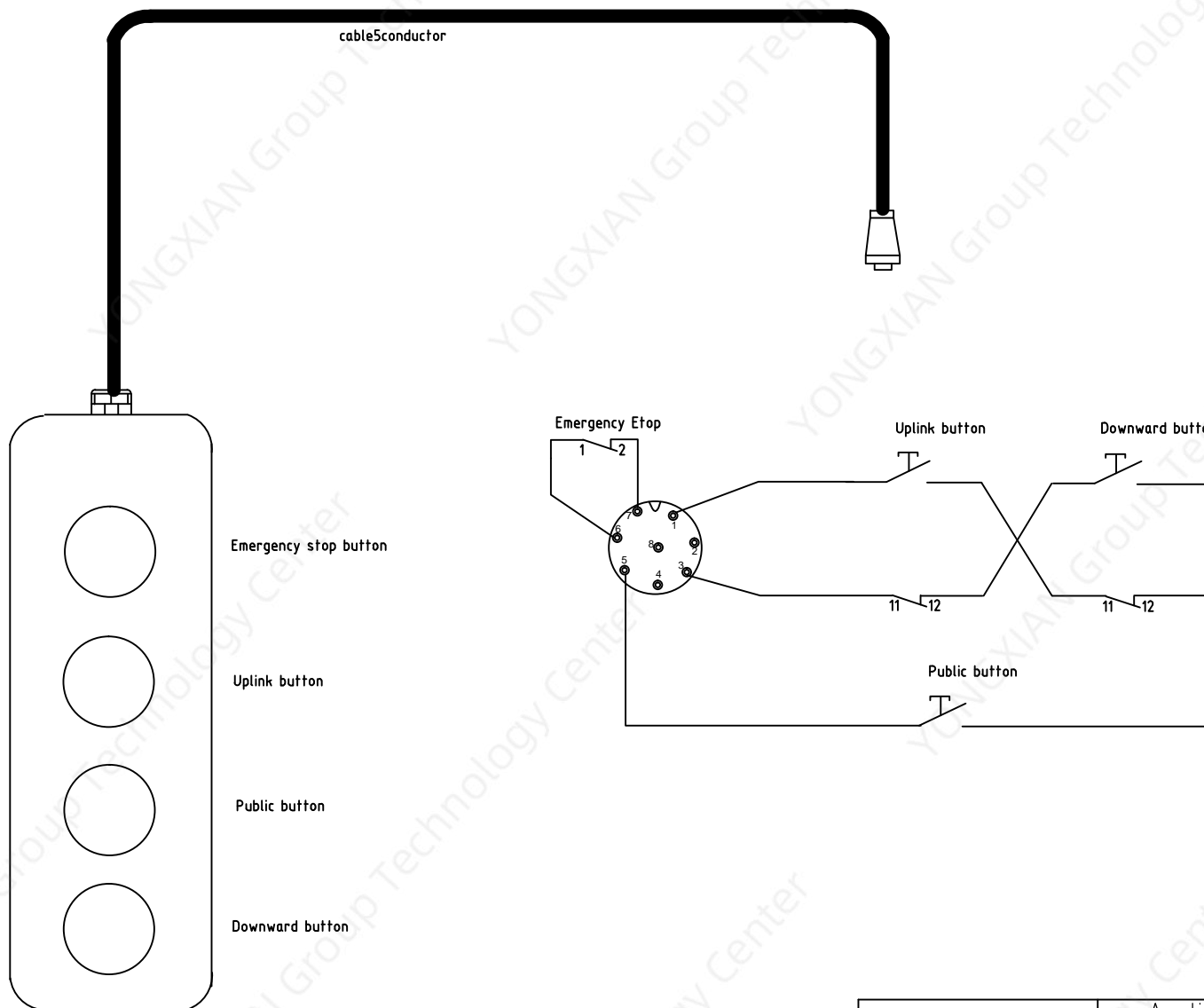
日期

NICE 2000 NEWS				Applicable to escalator series Holding brake and step lighting circuit
design		date		
check		date		
audit		date		



借通用件登记
 插图
 校核
 图底图号
 签字
 日期

NICE 2000 NEWS			Applicable to escalator series Holding brake and step lighting circuit	
design		date		
check		date		
audit		date		



借通用件登记

插图

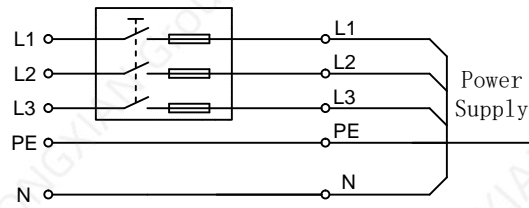
校核

图底图号

签字

日期

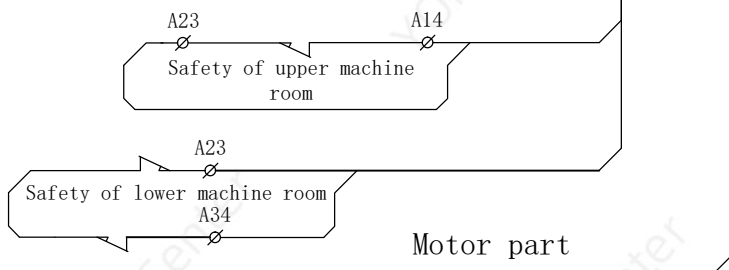
NICE 2000 NEWS				Applicable to escalator series	
				Wiring diagram of maintenance handle	
design		date			
check		date			
audit		date			



Control cabinet

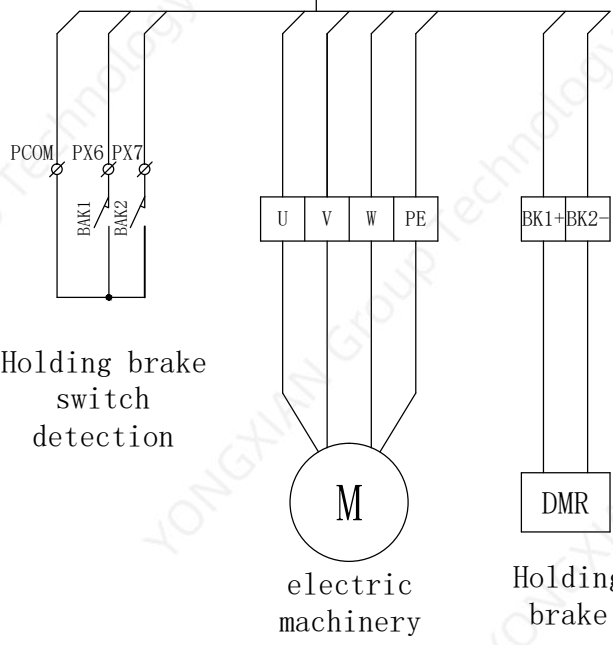
504	502	002	A13	A12
A14	A23	A34	A36	301
302	304	305	A04	A06
A09	A10	P24V	PCOM	PX15
PX16	PX17	PX19	PX20	PX6
PX7	PX8	PX9	PX10	

Wiring part of upper machine room



Wiring part of lower machine room

Main cable from upper machine room to lower machine room



501	502	A23	A34	A36
A38	301	302	A06	A05
A07	A08	A09	A10	P24V
PCOM	PX18	504	303	304
PX11				

Lower machine room junction box

A23	A24	A25	A26
A27	A28	A29	A30
A31	A32	A33	A34
A36	A36-1	A37	A38
PX11	PX18	PCOM	P24V
303	304	301	302

NICE 2000 NEWS			Wiring topology	
			Q4E1A00020	
design		date		
check		date		
audit		date		

借通用件登记

插图

校核

图底图号

签字

日期

P/ X17	P/ X16	P/ X15	P/ X10	P/ X09	P/ X08	P/ X07	P/ COM	P/ COM		
P/ X06	P/ 24V	P/ 24V	P/ COM	P/ COM	P/ COM	P/ COM	P/ COM	P/ COM		

AC

P/ X11	P/ X18	P/ X19	P/ X20	301	302	A05	501	502	504
P/ COM	P/ 24V		304	303	A07	A08	A06	A10	A09

BB

A10	A04	A09	302	A35 -1	301
A06	306	305	302	A36	

AB

A13	002	001
A13	002	001

DD

504	302	502	
BK1		BK3	BK2

DC

A16	A17	A18	A19	A20	A21	A22	A14
A16	A17	A18	A19	A20	A21	A22	A23

AA

A23	A24		A33	A36	A38	A37
A26	A28	A30	A32	A33	A36	A36 -1

BA

A38	A38 -2	A38 -3		A38 -5
A38 -1	A38 -1	A38 -2		A38 -4

DB

借通用件登记

插图

校核

图底图号

签字

日期

NICE 2000 NEWS			Peripheral circuit plug-in board diagram		
			Q4E1A00020		
design		date			
check		date			
audit		date			

工厂服务联系地址
版权所有 如有变动 恕不通知

由于本公司持续的产品升级造成的内容变更恕不另行通知
版权所有归本公司