

Room 902, Tower B, Van Metropolis Building,
No.35 Tangyan Road, Xi'an, China

TEL: +86 029 8881 5624 FAX: +86 029 88815624
E-mail: alex.autoway@gmail.com

WAN'PU

OCEANS APART

PURSuing TOGETHER

2026

Xi'an Wanpu Import And Export Trading Co., Ltd





CS132-3.0KW

Model: Type 2
 Power: 3.0KW
 Voltage: 230V
 Current: 13A
 single-phase
 Length: 5M
 Wire: EVC
 Wire gauge: AC cable 3x2.5mm²+2x0.5mm² Warm sensation,
 Connector output cable 3x6mm²+1x0.75mm²
 Shell material: PC+ABS
 Display screen size: 1.8 inch LCD display
 RCD: AC 30mA+DC 6mA

CE RoHS

CS132-3.5KW

Model: Type 2
 Power: 3.5KW
 Voltage: 230V
 Current: 16A
 single-phase
 Length: 5M
 Wire: EVC
 Wire gauge: AC cable 3x2.5mm²+2x0.5mm² Warm sensation,
 Connector output cable 3x6mm²+1x0.75mm²
 Shell material: PC+ABS
 Display screen size: 1.8 inch LCD display
 RCD: AC 30mA+DC 6mA

CE RoHS

CS132-7KW

Model: Type 2
 Power: 7KW
 Voltage: 230V
 Current: 32A
 single-phase
 Length: 5M
 Wire: EVC
 Wire gauge: AC Input cable 3x6mm²,
 Connector output cable 3x6mm²+1x0.75mm²
 Shell material: PC+ABS
 Display screen size: 1.8 inch LCD display
 RCD: AC 30mA+DC 6mA

CE RoHS

CS132-11KW

Model: Type 2
 Power: 11KW
 Voltage: 400V
 Current: 16A
 three-phase
 Length: 5M
 Wire: EVC
 Wire gauge: AC Input cable 5x2.5mm²,
 Connector output cable 5x2.5mm²+1x0.75mm²
 Shell material: PC+ABS
 Display screen size: 1.8 inch LCD display
 RCD: AC 30mA+DC 6mA

CE RoHS



CS133-7KW

Model: Type 2
 Power: 7KW
 Voltage: 230V
 Current: 32A
 single-phase
 Length: 5M
 Wire: EVC
 Wire gauge: AC Input cable 3x6mm²,
 Connector output cable 3x6mm²+1x0.75mm²
 Shell material: PC+ABS
 Display screen size: 1.8 inch LCD display
 RCD: AC 30mA+DC 6mA

CE RoHS

CS133-3.0KW

Model: Type 2
 Power: 3.0KW
 Voltage: 230V
 Current: 13A
 single-phase
 Length: 5M
 Wire: EVC
 Wire gauge: AC cable 3x2.5mm²+2x0.5mm² Warm sensation,
 Connector output cable 3x6mm²+1x0.75mm²
 Shell material: PC+ABS
 Display screen size: 1.8 inch LCD display
 RCD: AC 30mA+DC 6mA

CE RoHS

CS133-3.5KW

Model: Type 2
 Power: 3.5KW
 Voltage: 230V
 Current: 16A
 single-phase
 Length: 5M
 Wire: EVC
 Wire gauge: AC cable 3x2.5mm²+2x0.5mm² Warm sensation,
 Connector output cable 3x6mm²+1x0.75mm²
 Shell material: PC+ABS
 Display screen size: 1.8 inch LCD display
 RCD: AC 30mA+DC 6mA

CE RoHS

CS133-11KW

Model: Type 2
 Power: 11KW
 Voltage: 400V
 Current: 16A
 three-phase
 Length: 5M
 Wire: EVC
 Wire gauge: AC Input cable 5x2.5mm²,
 Connector output cable 5x2.5mm²+1x0.75mm²
 Shell material: PC+ABS
 Display screen size: 1.8 inch LCD display
 RCD: AC 30mA+DC 6mA

CE RoHS



CS92-3.5KW

Model: Type 2
 Power: 3.5KW
 Voltage: 230V
 Current: 16A
 Single-phase
 Length: 5M
 Wire: TPU
 Wire gauge: 3x2.5mm²+1x0.75mm²
 Shell material: Silicon PC
 Display: LED indicator
 RCD: Type A

CE RoHS **UK CA**

CS81--7KW

Model: Type 2
 Power: 7KW
 Voltage: 230V
 Current: 32A
 single-phase
 Length: 5M
 Wire: TPU
 Wire gauge: 3x6mm²+1x0.75mm²
 Shell material: Silicon PC
 Display: 2.8 inch LCD display
 RCD: Type A

CE RoHS **UK CA**

CS81-9.6KW

Model: Tesla
 Power: 9.6KW
 Voltage: 240V
 Current: 40A
 Single-phase
 Length: 5M
 Wire: TPU
 Wire gauge: 3x9AWG+1x18AWG
 Shell material: Silicon PC
 Display screen size: 2.8 inch LCD display
 RCD: Type A
 Warranty period: 12 months
 Certification: [UL Gunline Report](#)
 Function: One button to open chargeport

FC





CS71-3.6KW

Model: Type 2
 Power: 3.6KW
 Voltage: 230V
 Current: 16A
 Single-phase
 Length: 5M
 Wire: TPU
 Wire gauge: 3x2.5mm²+0.5mm²
 Shell material: PC
 RCD: Type A RCD

CE RoHS



CS71T

Model: Type 1
 Power: 9.6KW
 Voltage: 240V
 Current: 16A
 Single-phase
 Length: 5M
 Wire: TPE
 Wire gauge: 3x14AWG+18AWG
 Shell material: PC
 RCD: Type A RCD
 Certification: [UL Gunline Report](#)
 One click lid opening unlock dual function

FC



CS73

Model: Type 2
 Power: 22KW
 Voltage: 380V
 Current: 32A
 single-phase
 Length: 5M
 Wire: TPU
 Wire gauge: 5G6mm²+1x0.5mm²
 Shell material: PC
 Display: 2.1 inch LCD display
 RCD: Type A RCD+DC 6mA

CE RoHS



CS134

Model: Type 2
 Power: 11KW
 Voltage: 400V
 Current: 16A
 three-phase
 Length: 5M
 Wire: EVC
 Wire gauge: AC Input cable 5x2.5mm²,
 Connector output cable 5x2.5mm²+1x0.75mm²
 Shell material: PC+ABS
 Display screen size: 1.8 inch LCD display
 RCD: AC 30mA+DC 6mA

CE RoHS



CS20A

Model: Type 2
 Power: 7KW
 Voltage: 230V
 Current: 32A
 Single-phase
 Length: 5M
 Wire: TPU
 Wire gauge: 3x6.0mm²+2x0.5mm²
 Shell material: PC
 Display: 0.96 inch LCD display
 RCD: 30mA AC

CE RoHS



CS20B

Model: Type 2
 Power: 3.5KW
 Voltage: 230V
 Current: 16A
 Single-phase
 Length: 5M
 Wire: TPU
 Wire gauge: 3x2.5mm²+2x0.5mm²
 Shell material: PC
 Display: 0.96 inch LCD display
 RCD: 30mA AC

CE RoHS



CS93-7KW

Model: Type 2
 Power: 7KW
 Voltage: 230V
 Current: 32A
 single-phase
 Length: 5M
 Wire: TPU
 Wire gauge: 3x6mm²+1x0.75mm²
 Shell material: Silicon PC
 Display: 2.8 inch LCD display
 RCD: Type A

CE RoHS UK CA



CS81-9.6KW

Model: Type 1
 Power: 9.6KW
 Voltage: 230V
 Current: 40A
 Single-phase
 Length: 5M
 Wire: TPE
 Wire gauge: 2x8AWG+10AWG+16AWG
 Shell material: PC
 Display screen size: 2.8 inch LCD display
 RCD: A +ccid20

FC



CS70

Model: Type 1
 Power: 7KW
 Voltage: 230V
 Current: 32A
 Single-phase
 Length: 5M
 Wire: TPE
 Wire gauge: 3x10AWG+1x18AWG
 Shell material: PC
 Display: 2.8 inch LCD display
 RCD: TypeA+6: 30mA for AC and 6mA for DC faults
 Certification: ETL Gunline Report, UL Gunline Report



CS78-7KW

Model: Type 2
 Power: 7KW
 Voltage: 230V
 Current: 32A
 Single-phase
 Length: 5M
 Wire: TPU
 Wire gauge: 3x6mm²+1x0.5mm²
 Shell material: PC
 Display: 2.4 inch LCD display
 RCD: TypeA+6: 30mA for AC and 6mA for DC faults
 Certification: ETL Gunline Report, UL Gunline Report

CE RoHS



CS72

Model: Type 1
 Power: 7KW
 Voltage: 240V
 Current: 32A
 Single-phase
 Length: 5M
 Wire: TPE
 Wire gauge: 3x10AWG+2x18AWG
 Shell material: PC
 RCD: Type A RCD
 Certification: UL Gunline Report

FC



CS26D

Model: Type 2
 Power: 22KW
 Voltage: 380V
 Current: 32A
 Three-phase
 Length: 5M
 Wire: TPU
 Wire gauge: 5x6mm²+1x0.5mm²

CE RoHS



T02T

Model: Tesla
 Power: 11KW
 Voltage: 240V
 Current: 48A
 single-phase
 Length: 5M
 Wire: TPE
 Wire gauge: 2x8AWG+10AWG+2x18AWG
 Certification: UL Gunline Report
 One click lid opening unlock dual function



T02C-3.5KW

Connector 1: Type 2
 Connector 2: Type 2 female
 Power: 3.5KW
 Voltage: 240V
 Current: 16A
 single-phase
 Length: 5M
 Wire: TPU
 Wire gauge: 3x2.5mm²+1x0.75mm² (3.5kw)
 Shell material: Silicon PC

CE RoHS UK CA FC





CS84T

Model: Tesla
 Power: 11KW
 Voltage: 240V
 Current: 48A
 single-phase
 Length: 5M
 Wire: TPE
 Wire gauge: 2x8AWG+10AWG+2x18AWG
 Certification: [UL Gunline Report](#)
 One click lid opening unlock dual function



CS84

Model: Type 2
 Power: 22KW
 Voltage: 380V
 Current: 32A
 Three-phase
 Length: 5M
 Wire: TPU
 Wire gauge: 5x6mm²+1x0.5mm²

CE RoHS

CS136

Model: Type 2
 Power: 22kW (2x11KW, 22kW for one connector)
 Voltage: 400V
 Current: 50A
 three-phase
 Length: 5M
 Wire: EVA
 Wire gauge: AC Input cable 5x10mm², Connector output cable 5x6mm²+1x0.75mm²
 Shell material: PC
 Display: 3.8-inch LCD screen
 Indicator Light: 4 LED lights
 RCD: TypeA(30mA, external RCCB) + DC6mA built-in
 Charging Control: APP,RFID,plug&play
 Communication Interface: WiFi+BT, 4G, LAN
 Communication Protocol: OCPP 1.6J
 Certification: [ETL UL Gunline Report](#)

CE RoHS FC



CS137

Model: Type 2
 Power: 11kW
 Voltage: 400V
 Current: 16A
 three-phase
 Length: 5M
 Wire: EVC
 Wire gauge: AC Input cable 5x2.5mm², Connector output cable 5x2.5mm²+1x0.75mm²
 Shell material: PC
 Display: 3.8-inch LCD screen
 Indicator Light: 4 LED lights
 RCD: TypeA(30mA, external RCCB) + DC6mA built-in
 Charging Control: APP,RFID,plug&play
 Communication Interface: WiFi+BT, 4G, LAN
 Communication Protocol: OCPP 1.6J
 Certification: [ETL UL Gunline Report](#)

CE RoHS FC



CS74

Model: Type 1
 Power: 9.6kW
 Voltage: 240V
 Current: 40A
 Single-phase
 Length: 7.5M
 Wire: TPE
 Wire gauge: 3 * 9AWG+1 * 18AWG
 Shell material: PC
 Indicator Light: LED lights
 RCD: Type A + 6
 Communication Interface: WIFI+Bluetooth,Phone APP
 Communication Protocol: OCPP 1.6J (can chose)
 Certification: [ETL](#)
 Energy Star

FC





CS79-7KW

Model: Type 2
 Power: 7kW
 Voltage: 230V
 Current: 32A
 Single-phase
 Length: 5M
 Wire: TPU
 Wire gauge: 3x6mm²+1x0.5mm²
 Shell material: ABS+PC
 Display: 4.3-inch LCD screen
 Indicator Light: LED Indicator
 RCD: 30mA for AC AND 6mA for DC faults (Type A + 6)
 Charging Control: APP,RFID,plug&play
 Communication Interface: WiFi+BT, 4G, LAN (can chose)
 Communication Protocol: OCPP 1.6J (can chose)
 Certification: [ETL Gunline Report](#),[UL Gunline Report](#)

CE RoHS

CS21A



Model: Type 2
 Power: 7kW
 Voltage: 230V
 Current: 32A
 Single-phase
 Length: 5M
 Wire: TPU
 Wire gauge: 3x6mm²+1x0.5mm²
 Shell material: ABS+PC
 Display: 2.8 inch LCD screen
 Indicator Light: LED Indicator
 RCD: type A 30mA AC
 Charging Control: RFID
 Communication Interface: WiFi+BT, 4G, LAN (can chose)
 Communication Protocol: OCPP 1.6J (can chose)

CE RoHS

CS83-11.52KW



Model: Tesla
 Power: 11.52kW
 Voltage: 240V
 Current: 50A
 single-phase
 Length: 5M
 Wire: TPE
 Wire gauge: 2x8AWG+1x10AWG+1x16AWG
 Shell material: Silicon PC
 Display: 4.3-inch LCD screen
 RCD: Type A
 Charging Control: APP,RFID
 Communication Interface: WiFi+BT, 4G, LAN (optional)
 Communication Protocol: OCPP 1.6J (optional)
 Certification: [UL Gunline Report](#)

CE RoHS

CS32

Model: Type 2
 Power: 7kW
 Voltage: 230V
 Current: 32A
 Single-phase
 Length: 5M
 Wire: TPU
 Wire gauge: 3x6mm²+1x0.5mm²
 Shell material: ABS+PC
 Display: 4.3 inch LCD screen
 Indicator Light: LED Indicator
 RCD: 30mA for AC AND 6mA for DC faults (Type A + 6)
 Charging Control: RFID
 Communication Interface: WiFi+BT, 4G, LAN (can chose)
 Communication Protocol: OCPP 1.6J (can chose)

CE RoHS



CS33

Model: Tesla
 Power: 7kW
 Voltage: 250V
 Current: 32A
 single-phase
 Length: 5M
 Wire: TPE
 Wire gauge: 3x10AWG
 Shell material: Silicon PC
 Display: 4.3-inch LCD screen
 RCD: 30mA for AC AND 6mA for DC faults (Type A + 6)
 Charging Control: RFID
 Communication Interface: WiFi+BT, 4G, LAN (optional)
 Communication Protocol: OCPP 1.6J (optional)

FC





NEW

EP2041

Capacity: 8000mAh 29.60Wh
 Starting current: 400A
 Peak current 1000A
 USB-A 1 output: 5V-3A, 9V-2A, 12V-1.5A(QC3.0)
 USB-A 2 output: 5V-2A
 USB-C input/output: 5V-2A, 9V-2A LED with 3 lighting modes

EP2132

4 IN 1 Jump starter with air compressor
 Capacity: 7200mAh
 Type C Input: 5V/3A, 9V/2A, 12V/1.5A
 USB Output 1: 5V/3A, 9V/2A, 12V/1.5A
 USB Output 2: 5V/3A, 9V/2A, 12V/1.5A
 Maximum Inflating Pressure: 150 PSI
 Starter current: 300A
 Peak current: 600A
 Material: Plastic & ABS+pc
 LED Flashlight: Solid/SOS/Strobe
 Dimension (L*W*H): 184*127*55mm
 Great for Engine: 4.0L Gas & 2.5L Diesel

Accessories: Jump starter
 -Intelligent clamp
 -Type C cable
 -Valve connector * 3
 -Manual
 -Canvas bag package

CE RoHS

EP2132B

4 IN 1 Jump starter with air compressor
 Capacity: 10000mAh
 Type C Input: 5V/3A, 9V/2A, 12V/1.5A
 USB Output 1: 5V/3A, 9V/2A, 12V/1.5A
 USB Output 2: 5V/3A, 9V/2A, 12V/1.5A
 Maximum Inflating Pressure: 150 PSI
 Starter current: 400A
 Peak current: 800A
 Material: Plastic & ABS+pc
 LED Flashlight: Solid/SOS/Strobe
 Dimension (L*W*H): 184*127*55mm
 Great for Engine: 6.0L Gas & 4.0L Diesel

Accessories: Jump starter
 -Intelligent clamp
 -Type C cable
 -Valve connector * 3
 -Manual
 -Canvas bag package

CE RoHS



HOT!



HOT!

EP2022

*Capacity: 3.7V/10000mAh(37Wh)
 *Type-C Input: QC18W
 *USB Output1: 5V/2.1A
 *USB Output2: QC18W
 *starting current :500A
 *peak current:1000A
 *LED lighting: Panel light/SOS/Strobe/Warning 100LM
 *Applicable to automobile battery voltage :12V
 *Less than 5.0L gasoline/3.5L diesel
 *The atmospheric pressure:150Psi
 *cylinder block specifications:19 cylinder (About 20L/MIN gas flow)
 Jump starter/EC5 jumper cable/Storage bag/User manual/Charging cable/
 Gas Needle/Gas Nozzle/Air tube

With EMC

FC RoHS

EP2186

4 IN 1 Jump starter with air compressor
 Capacity: 12000mAh
 Type C Input: 5V/2A, 9V/2A, 12V/1.5A
 USB Output 1: 5V/3A, 9V/2A, 12V/1.5A
 USB Output 2: 5V/3A, 9V/2A, 12V/1.5A
 DC Output: 15V/10A
 Maximum Inflating Pressure: 150 PSI
 Starter current: 500A
 Peak current: 1000A
 Material: Plastic & ABS+pc
 LED Flashlight: White Solid/White Strobe/Red Strobe/White SOS
 Dimension (L*W*H): 209*112*50mm
 Great for Engine: 7.0L Gas & 5.0L Diesel

Accessories: -Jump starter
 -Intelligent clamp
 -Type C cable
 -Valve connector * 3
 -Manual
 -Canvas bag package

CE RoHS

EP2023

OEM Jump Starter
 *Capacity: 3.7V/12000mAh(44.4Wh)
 *Type-C Input: QC18W
 *USB Output1: 5V/2.1A
 *USB Output2: QC18W
 *starting current :750A
 *peak current:1500A
 *LED lighting: Panel light/SOS/Strobe/Warning 100LM
 *Applicable to automobile battery voltage :12V
 *Less than 6.0L gasoline/4.5L diesel
 *The atmospheric pressure:150Psi
 *cylinder block specifications:25mm cylinder (>25L/MIN gas flow)
 *Product size: 217.7*120*76.9mm
 *Weight/box: KGS
 What's in the box:
 Jump starter/EC5 jumper cable/Storage bag/User manual/Charging cable/
 Gas needle/Gas Nozzle/Air tube/

CE RoHS



HOT!



NEW



HOT!



EP2187

Ultra 4 IN 1 Jump starter with air compressor
 Capacity: 16000mAh
 Type C Input/Output: (PD65W)5V/3A,9V/3A,12V/3A,15V/3A,20V/3.25A
 USB Output 1&2: (QC18W) 5V/3A, 9V/2A, 12V/1.5A
 Maximum Inflating Pressure: 160 PSI
 Starter current: 600A
 Peak current: 1200A
 Material: Plastic & ABS+pc
 LED Flashlight: Solid/SOS/Strobe
 Dimension (L*W*H):233*124*55mm
 Great for Engine: 8.0L Gas & 6.0L Diesel

- Accessories: -Jump starter
 -Intelligent clamp
 -Type C cable
 -Valve connector * 3
 -Manual
 -Canvas bag package

CE RoHS



EP2046

OEM Jump Starter
 *Capacity:40000mAh/148Wh
 *Input:18V/1A
 *Output:5V/2.1A
 *starting current :2000A
 *peak current:4000A
 *LED lighting: Light/SOS/Warning
 *Applicable to automobile battery voltage :24V
 *1L-8L -All Gasoline and diesel
 *Dimension:260.41*120*132.78mm



EP2043

Capacity: 7200mAh 29.60Wh
 Starting current: 300A
 Peak current: 800A
 USB-A output: 5V-3A,9V-2A, 12V-1.5A(QC3.0)
 USB-C input: 5V-2A, 9V-2A
 Three LED lighting modes



EP2044

Capacity: 8000mAh 29.60Wh
 Starting current: 400A
 Peak current 1000A
 USB-A output: 5V-3A,9V-2A, 12V-1.5A(QC3.0)
 USB-C input: 5V-2A, 9V-2A
 Three LED lighting modes



EP2138

Capacity: 7200mAh
 Type C Input: 5V/1.5A
 Output: 5V/2.1A
 Starter current: 300A
 Peak current: 600A
 Material: PC+ABS/V0
 Dimension (L*W*H):158*84.5*33mm
 Function: Auto 12V emergency starter, Powerful USB power bank, Built-in LED Flashlight
 Great for Engine: 4.0L Gas & 2.5L Diesel

Accessories: -Jump starter
 -Intelligent clamp
 -Micro cable
 -Manual
 -Paper box package

CE RoHS



EP2195-8000

*Capacity:3.7V/8000mAh(29.6Wh)
 *Type-C Input:QC18W
 *USB Output1:5V/2.1A
 *USB Output2:QC18W
 *starting current :400A
 *peak current:800A
 *LED lighting: Light/SOS/Strobe 100LM
 *Applicable to automobile battery voltage :12V
 *Less than 4.0L gasoline/2.5L diesel
 *Dimension:186.9*86.6*39.1mm
 *N.W:0.44KGS

What's in the box:
 Jump starter/EC5 jumper cable/Storage bag/User manual/
 Charging cable
 With EMC

RoHS FC



EP2195-16000

*Capacity:3.7V/16000mAh(59.2Wh)
 *Type-C Input:QC18W
 *USB Output1:5V/2.1A
 *USB Output2:QC18W
 *starting current :1000A
 *peak current:2000A
 *LED lighting: Light/SOS/Strobe 100LM
 *Applicable to automobile battery voltage :12V
 *Less than 7.0L gasoline/6.5L diesel
 *Dimension:208*86*43.6mm
 *N.W:0.65KGS

What's in the box:
 Jump starter/EC5 jumper cable/Storage bag/User manual/
 Charging cable
 With EMC

RoHS FC



EP2195-24000

*Capacity:3.7V/24000mAh(88.8Wh)
 *Type-C Input:QC18W
 *USB Output1:5V/2.1A
 *USB Output2:QC18W
 *starting current :2000A
 *peak current:4000A
 *LED lighting: Light/SOS/Strobe 100LM
 *Applicable to automobile battery voltage :12V
 *Less than 10.0L gasoline/10.0L diesel
 *Dimension:257*90*44mm
 *N.W:0.89KGS

What's in the box:
 Jump starter/EC5 jumper cable/Storage bag/User manual/
 Charging cable
 With EMC

RoHS FC

EP2185

Jump Starter with LCD display
 Capacity: 10000mAh
 Specifications: 3 USB ports + 1 DC port
 Type C Input: 5V/2A, 9V/2A, 12V/1.5A
 USB Output 1&2: (QC18W) 5V/3A, 9V/2A, 12V/1.5A
 DC Output: 15V/10A
 Start Current: 400A
 Peak Current: 800A
 Material: PC+ABS
 LED Flashlight: White Solid/White Strobe/Orange Strobe/
 White SOS
 Working temperature: -20℃ -60℃
 Great for Engine: 6.0L Gas & 4.0L Diesel

Accessories: -Jump starter
 -Intelligent clamp
 -Type C cable
 -Manual
 -Canvas bag package

CE RoHS



EP2025

*Capacity:3.7V/10000mAh(37Wh)
 *Type-C Input:QC18W
 *USB Output1:5V/2.1A
 *USB Output2:QC18W
 *starting current :500A
 *peak current:1000A
 *LED lighting: Light/SOS/Strobe
 *Applicable to automobile battery voltage :12V
 *Less than 5.0L gasoline/3.5L diesel

What's in the box:
 Jump starter/EC5 jumper cable/Storage bag/User manual/
 Charging cable
 With EMC

RoHS FC

NEW



EP2042

Capacity: 12000mAh 44.40Wh
 Starting current: 600A
 Peak current 2000A
 USB-A output: 5V-3A, 9V-2A, 12V-1.5A(QC3.0)
 USB-C input: 5V-2A, 9V-2A
 Three LED lighting modes

EP2007

Capacity: 12000mAh (500pcs can change color)
 Output: 5V/2A
 Input: 5V/2A*2; 12V, 16V, 9V/3A
 Full charging time: 4 hours
 Start Current: 1000A
 Peak Current: 2000A Size: 175 * 90 * 35 mm
 Using temperature: -20 °C ~ 60 °C / -4 °F ~ 120 °F
 Cycling Use life: >1000 Times
 LED light (lighting, flash, SOS)
 Accessories:
 smart clamp x 1
 USB cable x 1
 Home charger x 1
 Cigarette lighter x 1
 Manual x 1

CE RoHS FC

EP2133B

LCD Screen/Big Capacity/PD65W
 Capacity: 16000mAh
 Type C Input/Output:
 (PD65W) 5V/3A, 9V/3A, 12V/3A, 15V/3A, 20V/3.25A
 USB Output 1: 5V/3A, 9V/2A, 12V/1.5A
 USB Output 2: 5V/3A, 9V/2A, 12V/1.5A
 DC Output: 15V/10A
 Starter current: 600A
 Peak current: 1200A
 Material: Plastic & ABS+pc
 Dimension (L*W*H): 243*113*66mm
 Function: Auto 12V emergency starter, Powerful USB power bank,
 Built-in LED Flashlight

CE RoHS

NEW



EP2026

*Capacity: 3.7V/16000mAh (59.2Wh)
 *Type-C Input: QC18W
 *USB Output1: 5V/2.1A
 *USB Output2: QC18W
 *DC5.5 Output: 12V/6A
 *starting current :1000A
 *peak current: 2000A
 *LED lighting: Light/SOS/Strobe 80LM
 *Applicable to automobile battery voltage :12V
 *Less than 7.0L gasoline/6.5L diesel
 What's in the box:
 Jump starter/EC5 jumper cable/Storage bag/User manual/
 Charging cable/Cigarette lighter adapter

With EMC

RoHS FC

EP2196

Capacity: 20000mAh (12V jump start)
 Non-load current: 2.5A
 Rated Power: 88.8W
 Start Current: 2000A
 Peak Current: 4000A
 Output: 9V/2A (5-6hrs full recharged)
 Input: 9V/2A
 Starter Size: 238*48*103mm
 Operation Temp: -10 °C ~ 60 °C
 Life Time: >1000 times
 Function: LED Light, Spark Proof, Digital screen, Inflator, Flashlight
 Use: Passenger Car, Motorcycle, Inflator, Flashlight
 Certificate: CE/FCC/ROHS (1000 sets are available free of charge)
 Accessories:
 Smart clamp x 1
 USB cable x 1
 Manual x 1

EP2197

Capacity: 20000mAh (12V jump start)
 Non-load current: 2.5A
 Rated Power: 88.8W
 Start Current: 2000A
 Peak Current: 4000A
 Output: 9V/2A (5-6hrs full recharged)
 Input: 9V/2A
 Starter Size: 238*48*103mm
 Operation Temp: -10 °C ~ 60 °C
 Life Time: >1000 times
 Function: LED Light, Spark Proof, Digital screen, Inflator, Flashlight
 Use: Passenger Car, Motorcycle, Inflator, Flashlight
 Certificate: CE/FCC/ROHS (1000 sets are available free of charge)
 Accessories:
 Smart clamp x 1
 USB cable x 1
 Manual x 1

HOT!



NEW



NEW





EP2133

LCD Screen/Big Capacity/PD65W
 Capacity: 20000mAh
 Type C Input/Output: (PD65W)5V/3A,9V/3A,12V/3A,15V/3A,20 V/3.25A
 USB Output 1: 5V/3A, 9V/2A, 12V/1.5A
 USB Output 2: 5V/3A, 9V/2A, 12V/1.5A
 DC Output: 15V/10A
 Starter current: 1000A
 Peak current: 2000A
 Material: Plastic & ABS+pc
 Dimension (L*W*H):239.5*100*57.5mm
 Function: Auto 12V emergency starter, Powerful USB power bank,
 Built-in LED Flashlight
 Great for Engine: 10.0L Gas & 8.0L Diesel

Accessories: -Jump starter
 -Intelligent clamp
 -C - C cable
 -Type C cable
 -Manual
 -Canvas package

CE RoHS

EP094

Applicable models: 12V&24V voltage starting vehicles
 Current value: 6000A
 Starting current: 12V (3000A), 24V (1500A)
 USB output port: QC 18W
 Type Output PD: 45W
 DC Output:12-16.4V 10A MAX
 Car charger output:12-16.4V 10A MAX
 Charging voltage: DC19V 3A
 LED lighting: 6W
 Red and blue warning light: 0.5W
 Charging time: 4 hours
 Product size: 322.97x287.11x211.21mm
 Product capacity: 3.7V 64000mAh
 Suitable temperature: -40~60 °C
 With MSDS

FC

E2131

36400mah
 (135Wh)
 Size: 270.7x189x159.7mm
 Weight: 2600±50g
 Output: 5V/2.4A,5V1A、 12V /24V Jump Start
 Input:29V/5A、 QC18W(USB-C)
 Peak Current: 2500A
 Operating Temp.: -40 C ~55 C

EMC

RoHS FC





PO20

Battery Capacity:155Wh(42000mAh,3S7P 3.7V)
 Input charging
 Adapter:15V 2A about 7-8h
 Photovoltaic panel:18-22v
 AC output:Modified sine output 110V/220V 60Hz/50Hz
 USB output:2xUSB 5V/2.1A Max,
 1XUSB 5~9V/2A QC3.0
 TYPE-C output: PD18W
 AC power:100W/150W Max.
 DC output:9 ~1 2.5V/10A(15A Max)
 LED light:4W LEDlight/SOS/Blink mode
 Working temperature:-10 C -40 C
 Cycle life:>500times
 PSE,UN38.3,MSDS



PO21

Battery Capacity:222Wh(60000mAh, 3S8P 3.7V))
 Input charging
 Adapter:15V 3A about 7-8h
 Photovoltaic panel:18-22v
 AC Output: Modified sine output 110V/220V 60Hz/50Hz
 USB Output: 1xUSB 5V/2.1A Max
 1XUSB 5~9V/2A QC3.0
 TYPE-C output:PD18W
 AC Power:200W/320W Max
 DC output:9~12.5V/10A(15A Max)
 LED Light:4W LED light/SOS/Blink mode
 Working temperature:-10 C -40 C
 Cycle life:>500times
 PSE,UN38.3,MSDS



PO110

Battery Capacity:155Wh(42000mAh,3S7P 3.7V)
 Input charging
 Adapter:15V 2A about 7-8h
 Photovoltaic panel:18-22V
 AC output:Modified sine output 110V/220V 60Hz/50Hz
 USB output:1xUSB 5V/2.1A Max
 1XUSB 5~9V/2A QC3.0
 TYPE-C output: PD18W
 AC power:100W/150W Max.
 DC output:2x9 ~1 2.5V/10A(15A Max)
 LED light:XP625W LEDlight/SOS/Blink mode
 Working temperature:-10 C -40 C
 Cycle life:>500times
 PSE,UN38.3,MSDS



PO22

Battery capacity:296Wh (80000mAh,4S8P 3.7V)
 Input charging
 Adapter:19V 3A about 8h
 Photovoltaic panel:18-22v
 AC output:Sine wave output 110V/220V 60Hz/50Hz
 USB output:3xUSB 5V/2.1A Max
 2 xUSB5~9V/2A QC3.0
 TYPE-C 1 (PD18W)
 TYPE-C 2 (PD27W)
 AC power:300W/450W Max
 DC output:12~16.5/10A(15A Max)
 LED light:4W LED light/SOS/Blink mode
 Working temperature:-10 C -40 C
 Cycle life:>500times
 PSE,UN38.3,MSDS



PO23

Battery capacity:486Wh (135000mAh,6S9P 3.7V)
 Input charging
 Adapter:19V 3.75A about 8h
 Photovoltaic panel:80W-120W 18-22v
 AC output:Sine wave output 110V/220V 60Hz/50Hz
 USB output:3xUSB 5V/2.4A Max
 2 xUSB5~12V/2A QC3.0 18W)
 TYPE-C 1 (60W)
 TYPE-C 2(27W)
 AC power:500W/750W Max
 DC output:12V/10A MAX
 LED light:7W LED light/SOS/Blink mode
 Working temperature:-10 C -40 C
 Cycle life:>500times
 PSE,UN38.3,MSDS



PO161

Battery energy:537.6Wh
 Number of cells:32700 lithium iron phosphate battery/6000 mAhx28/7S4P
 Cell capacity:22.4Vx24Ah
 Product specification:267x170x220mm
 Color:black grey
 AC adapter input:90W/19V/4.74A (DC5525)
 Input DC5525:90W
 Solar input:MPPT, 13V-22V/5A (MAX)
 Output Type-C1:PD protocol: 5V/9V/12V/15V/20V ± 5%independent PD60W
 Output Type-C2:PD protocol: 5V/9V/12V/15V/20V ± 5%independent PD60W
 Output USB-A1:USB output 5~9V/2A (QC3.0) 18-24W
 Output USB-A2:USB output 5~9V/2A (QC3.0) 18-24W
 DC5521+cigarette lighter output:output 12.8V/10A (10.5A Max) X1
 Output 12.8V/10A (10.5A Max) X2
 AC outputx3:700W continuous power output





PO162

Battery: 1210Wh (22.4V 54Ah 378000mAh)
 Cycle life: 3500 times
 USB output: 3x5V/2.4A 25W maximum
 USB-C output: 1xPD&QC3.0 5V/3A, 9V/3A, 12V/3A, 15V/3A, 20V/3A 60W maximum
 Cigar lighter output: 1x12V 10A 120W maximum
 AC output: 220-240V/50Hz 60Hz 1500W Peak power: 2500W
 Input: municipal charging 27V8A 200W maximum (7909)/
 vehicle charging/solar energy 15V-24V 8A
 Lighting: 2W LED
 Charging temperature: 0 °C - 40 °C
 Discharge temperature: -10 °C - 40 °C

UL、PSE、METI、UN583、MSDS、REACH



PO194

Battery capacity: 3456Wh
 AC charging cable input: 2000W
 AC output: 100V-120V 3600W (peak 6000W)
 220V-240V 4000W (peak 6000W)
 Solar input: 2000W Max 11-150V MPPT
 AC charging line input+solar input: 3500W Max
 DC output:
 USB-A 12W (* 2) USB-A QC (* 2)
 2 * USB-C output: 100W
 1 * Car charging output: 12V10A
 Weight: 45KG
 Size: 540 * 300 * 490 mm
 Function: Bluetooth APP with large capacity can stack multiple
 UPS uninterruptible power supplies

PSE/UL2743/MSDS



PO205

Output specifications
 Communication output (4 AC ports): 120V~50Hz/60Hz
 Rated power: 3.6kW
 USB-A fast charging (x4 outputs): Supports BC1.2, APPLE, Samsung protocol, Qualcomm QC2.0/QC3.0, Huawei FCP fast charging protocol, AFC fast charging protocol, with a maximum power of 18W per channel
 Anderson interface (x1 output): 12V/30A
 TYPE-C fast charging (x 2 outputs): Supports PD3.0 and PPS protocols, unidirectional 100Wx1+unidirectional 60Wx1, voltage adaptive
 DC5521 output (x2 outputs): parallel port, maximum 120W for both output ports simultaneously
 Cigarette lighter output (x1 output): parallel with DC5521, maximum output of 120W at the same time

Battery cell specifications
 Cell material: LiFePO4 (lithium iron phosphate) (square aluminum shell)
 Cycle life: 4000 cycles

UL PSE



PO78



Outer Shell Material: (ABS+PC) UL-94V0+Alloy
 LCD display: Battery display/Time Display/Power Display/Frequency Display/Fan Status/ Output(AC/DC/USB/TYPE-C) Display
 Capacity: 999Wh (45Ah 22.2V)
 Cell type: Li-NiCoMn
 Single cell capacity/mAh: 4500mAh
 Lifecycle: 2000 cycles > 80%
 AC output:
 AC socket Qty: US*4/JP*4/EU*2/AU*2/UK*2/ZA*2/IL*2/CN*2
 AC Output waveform type: Pure Sine Wave
 Rated Output Power: 1200W
 Peak Power: 2400W
 Rated output voltage:
 US/JP: 100V-120V
 IL/EU/AU/UK/ZA/CN: 220V-240V

PO204



Energy of lithium ion battery pack:45Ah/22.4V/1008Wh
 Cell capacity:315000mAh/3.2V
 DC input:12-30V=10A Max
 AC output:220V/5.5A 50Hz/60Hz
 DC output:12-8.3A
 USB1 OUTPUT:5V-12V=1.5A/18W
 Type C1 output:5V-20V 3.25A/65W
 USB2 output:5V=2.4A
 Type C2 output:5V-2.4A

PO76



AC+Type C Dual Input
 Battery type: Lithium ion battery
 Battery energy: 288Wh
 AC output power:300W
 AC output voltage: 110/220V-50Hz/60Hz
 USB1/USB2 output: 5V/2.1A
 QC3.0 output: 5V/3A, 9V/2A, 12V/1.5A
 DC output: 12V-13V/10A
 DC input: 5V-20V/5A
 Type C input/output: 5V/2.4A, 9V/3A,12V/3A,15V/3A,20V/5A (PD100W)
 LED light: power 7W
 Size: 225*120*215mm
 UN38.3 MSDS





PO63

Battery Type :LiFePO4
 Battery:307Wh(12.8V 24Ah 96000mAh)
 Cycle Life:2000 times
 USB Output port:2*QC3.0 5V/2.4A 9V/2A,12V/2A 24W Max .
 Type-C PD45W&QC3.0 Output Port:1*5V/3A, 9V/3A ,12V/3A, 15V/3A, 20V/2.25A ,45W Max.
 CIG Output: 1*12V/10A 120W Max.
 AC Output:220V-240V/50Hz 60Hz or 100-120V/50Hz 60Hz Rated Power 300W
 Peak Power: 450W
 Input:Charger 15V/4A 60W(5525)/Car Cigar Port/Solar Panel 12V-24V 4A
 Weight:5kgs/11lbs
 Size:257 x 160x 165mm / 10.12X6.30X6.50inch
 Charging temperature:0°C~40°C (32 - 104 °F)
 Discharge temperature:-10- 40°C (14 - 104 °F)
 UL PSE METI UN38.3 MSDS REACH

CE RoHS FC

PO161

Capacity: 518Wh
 Battery type: Lithium iron phosphate battery
 Interface:
 USB-C input/output*1
 DC input*1
 DC output*1
 Car charging port*1
 USB-A output*2
 AC output*2

AC output: 800W
 USB-C input/output: 100W (max)
 USB-A output: 18W (max)
 DC input: 240W
 Solar input: 200W (MPPT)
 Car charging+DC output: 12V 10A 120W (MAX)
 Cycle life:>4000times
 Display: LED screen display
 Size: 34*17.8*23CM

EMC

RoHS

PO64

Battery Type: LiFePO4
 Battery: 518Wh (19.2V 27Ah 162000mAh)
 Cycle life: 2000 times
 USB Output Port: 5V/2.4A*3(Max 12W)
 Type-C PD&QC3.0 Input&Output: 5/9/12/15/20V Max 60W (Two-way)
 Wireless Output: 10W*2
 CIG Output: 12V/10A
 AC Output: 220V-240V/50Hz 60Hz or 110V-120V/50Hz 60Hz rated power 500W
 Peak power: 700W
 Input: TYPE-C 60W Max/Charger 27V4.5A 120W Max.(6514)/Car Cigar Port/Solar Panel 12V-24V 4.5A
 LED Light & SOS: 2W LEDs
 Weight: 7kgs/15.43lbs
 Size: 287*161*230mm 11.29*6.3*9.06inch
 Charging temperature:0°C~40°C (32 - 104 °F)
 Discharge temperature:-10- 40°C (14 - 104 °F)
 UL PSE METI UN38.3 MSDS REACH

CE RoHS FC



PO210

Battery Type:LiFePO4
 Battery:230.4Wh/3P4S
 Cycle life: 2500+ Cycles to 80% Original Capacity
 AC Output:1 x 240V/10A Outlets; 300W In Total (230V/50Hz)
 1 x 120V/10A Outlets; 300W in total (120V/60Hz)
 Surge Power:600W
 USB-C Port:5V/3A
 USB-A Port:3 x 5V/2.4A
 DC Output:12V/10A
 Wireless Charging:15W Max (Optional)
 AC Input:50W Max
 Solar(MPPT) Input:12-28V/2.5A 40W Max
 Car Input:12/24V 2.5A
 Weight:≈ 7.72 lbs / 3.5kg
 Dimensions (LxWxD):8.5×5.16×5.79 in / 217×131×147mm
 Operating Temperature:14-104 °F (-10-40 °C)
 Storage Temperature:32-104°F (0-40°C)
 UL UN38.3

CE RoHS FC

PO211

Battery Type:LiFePO4
 Battery:403.2Wh / 3P7S; 537.6Wh/4P7S
 Cycle life: 2500+ Cycles to 80% Original Capacity
 AC Output:2 x 240V/10A Outlets; 600W In Total (230V/50Hz)
 2 x 120V/10A Outlets; 600W in total (120V/60Hz)
 Surge Power:1200W
 USB-C1 Output:1 x 45W Max.
 USB-C2 Output:1 x 100W Max.
 USB-A1/A2 Output:QC 18W
 DC Output:1 x 12V/10A (Car Output)
 2 x 12V/10A DC 5521 (5.5mm Output)
 AC Input:160W Max.
 Solar Input:200W Max, VOC 12-28V, 8A
 Car Input:12/24V from Cigarette Lighter Port
 Maximum Input:350W, with AC and Solar Input Simultaneously
 Weight:14.33 lbs / 6.5kg
 Dimensions (LxWxD):10.94×8.13×7.93in / 278×206.6×201.3mm
 Operating Temperature:14-104 °F (-10-40 °C)
 Storage Temperature:14-113 °F (-10-45 °C)
 UN38.3

CE RoHS FC

PO214

Battery Type:LiFePO4
 Battery:1024Wh
 Cycle life:3500+ times
 AC Output:230V/2000W (Rated) 16A Max*4; Peak 4500W
 DC 12V output(&cigarette lighter&DC5521):12V/10A
 4*USB-A output:5V/3A; 9V/2A; 12V/1.5A(18W Max)
 2*USB-C output:5V/3A; 9V/3A; 12V/3A; 15V/3A; 20V5A; (PD 100W Max)
 Car Charge Input:12-15Vd.c 8A
 AC Charge Input:90-140V.a.c 12A 1400W Max
 PV(Anderson) Input:12-80V.d.c MPPT:18V-75V 13A 800W Max
 Size:15.1*9.1*11.6in (384*232*295mm)
 Net Weight:27.8lb (12.6kg)
 SAA UN38.3 MSDS

CE RoHS FC UK CA





PO213

Battery Type:LiFePO4
 Battery:2560Wh/1P16S
 Cycle life: 2500+ Cycles to 80% Original Capacity
 AC Output:3 x 240V/10A Outlets; 2400W In Total(230V/50Hz)
 4 x 120V/20A Outlets ; 1 x 120V/30A TT-30 Outlets;
 2400W in total(120V/60Hz)
 Surge Power:4800W (230V/50Hz)&(120V/60Hz) 200ms
 USB-C1/C2 Output:PD 100W
 USB-A1/A2/A3/A4 Output:4 x 5V/3A
 DC Output:1 x 12V/10A (Car Output)
 2 x 12V/10A DC 5521 (5.5mm Output)
 Wireless Charging Pad:2 x 15W Max (Optional)
 AC Input:1300W Max
 Solar(MPPT) Input:12-60V/12A 600W Max
 Car Input:12/24V 8.2A
 Maximum Input:1800W, with AC and Solar Input Simultaneously
 Weight:59 lbs / 26.8kg
 Dimensions (LxWxD):15.63x11.65x12.36 in / 397x296x314mm
 Operating Temperature:14-104 ℉ (-10-40 ℃)
 Storage Temperature:14-113 ℉ (-10-45 ℃)

UN38.3

CE RoHS FC

PO212

Battery Type:LiFePO4
 Battery:1120Wh / 1P7S
 Cycle life: 2500+ Cycles to 80% Original Capacity
 AC Output:2x 240V/10A Outlets ; 1200W In Total (230V/50Hz)
 2 x 120V/20A Outlets ; 1200W in total (120V/60Hz)
 Surge Power:2400W
 USB-C1 Output:1 x 100W Max.
 USB-C2/C3 Output:2 x 30W Max.
 USB-A1 Output:1 x 22.5W
 USB-A2/A3 Output:2 x 5V/2.4A
 DC Output:1 x 12V/10A (Car Output)
 2 x 12V/10A DC 5521 (5.5mm Output)
 AC Input:800W Max.
 Solar Input:300W Max, VOC 11-50V, 8.5A
 Car Input:12/24V,8.5A
 Maximum Input:1000W, with AC and Solar Input Simultaneously
 Weight:28.66 lbs / 13kg
 Dimensions (LxWxD):13.82x9.96x10.24 in / 351x253x260mm
 Operating Temperature:14-104 ℉ (-10-40 ℃)
 Storage Temperature:14-113 ℉ (-10-45 ℃)

UN38.3

CE RoHS FC

PO215

Battery Type:LiFePO4
 Battery:5040Wh(48V,105Ah)
 Cycle life:3600+ times
 AC Output:220-240V/5000W(Rated);7000W(Peak)(*5)
 DC 12V output(&cigarette lighter&DC5521):12V/10A
 Anderson Output:12V/13A
 4*USB-A output:5V/3A; 9V/2A; 12V/1.5A(18W Max); 5V/2A
 2*USB-C output:5V/3A; 9V/3A;12V/3A;15V/3A; 20V/3A;(PD 60W Max)
 AC Charge Input:220-240Vac 16A Max 2500W Max
 PV(Anderson) Input:12-150Vdc MPPT 18-140V 15A Max 2100W Max
 Size:25.2*11.9*17.2in(641.5*304.5*437.5mm)
 Net Weight:110.23lb(50kg)

SAA UN38.3 MSDS

CE RoHS UK CA



PO216

Battery Type:LiFePO4
 Battery:2048Wh
 Cycle life:3500+ times
 AC Output:220-240V/2500W(Rated)(*4)
 DC 12V output(&cigarette lighter&DC5521):12V/10A
 Anderson Output:12V/13A
 4*USB-A output:5V/3A;9V/2A;12V/1.5A(18W Max)
 2*USB-C output:5V/3A;9V/3A; 12V/3A; 15V/3A; 20V5A:(PD 100W Max)
 AC Charge Input:220-240Va.c 16A Max 1600W Max
 PV(Anderson) Input:12-150Vd.c MPPT:18V-140V15A Max 2100W Max
 Size:460*270*305mm

SAA UN38.3 MSDS

CE RoHS UK CA





EA01

Model: Type 2 to GBT
 Switch: support
 Power: 5-11KW
 Voltage: 220-250V
 Current: 32A
 Shell material: PC+ABS



EA02

Model: Type 2 to Type 1
 Switch: support
 Power: 5-11KW
 Voltage: 220-250V
 Current: 16-40A
 Shell material: PC+ABS



EA07

Model: Type1 to Tesla
 Switch: support
 Voltage: 100-250V
 Current: > 60A
 Shell material: PC



EA03

Model: Tesla to CCS1 DC
 Voltage: 500-1000V
 Current: 300A
 Shell material: PA66+Fiber glass



EA04

Model: CCS1-CCS2 DC
 Power: 50KWH-250KWH
 Voltage: 300V-1000V
 Current: 50A-250A
 Shell material: PC+ABS



EA08

Model: Type 2 to GBT
 Switch: support
 Voltage: 100-400V
 Current: > 50A
 Shell material: PC



EA09

Model: Tesla toType1
 Switch: support
 Voltage: 100-250V
 Current: > 60A
 Shell material: PC



EA05

Model: CCS2 to CCS1 AC+DC
 Voltage: 1000V DC/250V AC
 Current: 250A DC/80A AC
 Shell material: thermoplastic plastic



EA06

Model: CCS1 to Tesla
 Voltage: 500V DC
 Current: 300A
 Shell material: PA66+Glass Fiber



EA11

Model:Type 1 to GBT AC
 Voltage:250V
 Current:32A
 Shell Material:PC+ABS



EA12

Model:CCS2 to Tesla DC
 Voltage:500-1000V
 Current:250A
 Shell Material:PC+ABS



EA13

Model: CCS2 to Tesla DC+AC
 Voltage: 500-1000V
 Current: 250A
 Shell Material: PC+ABS



EA14

Model: Type1 to Type2 AC
 Voltage: 250V
 Current: 32A
 Shell Material: PC+ABS



DG01

Model: GB/T
 Socket: EU 16A socket, 4units
 Power: 3.5KW
 Voltage: 240V
 Current: 16A
 single-phase
 Length: 4M
 Wire: TPU
 Wire gauge: 3x2.5mm²
 Shell material: Silicon PC

CE RoHS



DG02

Model: Type 2
 Socket: EU 16A socket, 4units
 Power: 3.5KW
 Voltage: 240V
 Current: 16A
 single-phase
 Length: 4M
 Wire: TPU
 Wire gauge: 3x2.5mm²
 Shell material: Silicon PC

CE RoHS



DG03

Model: Type 2
 Socket: Universal socket
 Switch: support
 Power: 3.84KW
 Voltage: 240V
 Current: 16A
 single-phase
 Shell material: Polyoxymethylene



DG04

Model: GB/T
Socket: Universal socket
Switch: No
Power: 3.84KW
Voltage: 240V
Current: 16A
single-phase
Shell material: Polyoxymethylene



DG05

Model: Type1 V2L DISCHARGE
Voltage: 110-250V
Current: 16A
Shell Material: PC+ABS



DG06

Model: Type2 V2L DISCHARGE
Voltage: 110-250V
Current: 16A
Shell Material: PC+ABS





E838

Process: ETFE
 Power: 36W
 Unfolding size: 842x279x3.0mm
 Interference size: 279x195x26.5mm
 Output: 5V/3A, 9V/3A, 12Vx2.5A
 Folds qty: 4pcs
 Battery cell: Sunpower

CE RoHS

E840

Process: ETFE
 Power: 54W
 Expand size: 1251x279x3.0mm
 Interference size: 279x195x34mm
 Output: 5V/3A, 9V/3A, 12V/2.6A, 20V/2.1A
 Folds qty: 6pcs
 Battery cell: Sunpower

CE RoHS

E860-100W

Process: ETFE
 Power: 100W
 Expand size: 650x1050x3mm
 Closing size: 350x525x30mm
 Output: 20V/5A
 How many discounts: 20% off
 Cell Material: Monocrystalline Silicon

CE RoHS

E860-150W

Process: ETFE
 Power: 150W
 Expand size: 770x1300x3mm
 Closing size: 770x650x30mm
 Output: 20V/7.5A
 How many discounts: 20% off
 Cell Material: Monocrystalline Silicon



E841

Power: 12.5W (Monocrystalline)
 Cell conversion efficiency: > 22.5%
 Output voltage: dual 5V USB
 Output current: 5v2A
 MaxMaterial: 600D polyester
 Expansion size: 185*690mm
 Folding size: 185*120mm



E842

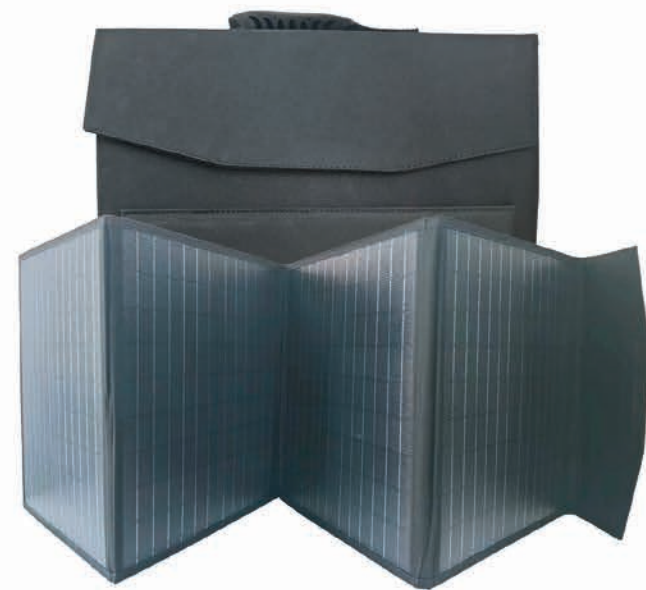
Folding number: 3pcs
 Energy source: solar power
 Power: 21w



E843

Single crystal
 Folding number: 3pcs
 Power: 30w





E818-100W

Craftsmanship: Hand sewn
 Power: 100W
 Expand size: 360x2000x3mm
 Closing size: 330x360x50MM
 Output: 20V/5A
 How many discounts: 60% off
 Cell Material: Monocrystalline Silicon

CE RoHS

E818-150W

Craftsmanship: Hand sewn
 Power: 150W
 Expand size: 420x2200x3mm
 Closing size: 420x420x50MM
 Output: 20v/7.5A
 How many discounts: 50% off
 Cell Material: Monocrystalline Silicon

CE RoHS



E815

Battery voltage: 12V/24V/36V/48V automatic
 Charging current: 100A
 Maximum photovoltaic input power:
 1200W Maximum solar input (Voc): 15-25V (12V battery)
 Maximum photovoltaic input power:
 2400W Maximum solar input (Voc): 30-50V (24V battery)
 Maximum photovoltaic input power:
 3600W Maximum solar input (Voc): 45-75V (36V battery)
 Maximum photovoltaic input power:
 4800W Maximum solar input (Voc): 60-100V (48V battery)
 EMC

RoHS FC

E816

Voltage: DC 12V/24V
 Display: LCD screen
 Self use: <10MA
 Overcharge protection: 14.4V/28.8V
 Overcharge float charging: 13.7V/27.4V
 Charging recovery voltage: 12.6V/25.2V
 Overdischarge protection: 10.7V/21.4V
 Discharge recovery: 12.6V/25.2V
 Dual USB output: 5V/2A (for charging phones, iPads, etc.)
 12V suitable for 18V solar panels,
 24V suitable for 36V solar panels
 EMC

RoHS FC





CE

C585A-3.5M/5.5M/7.5M

Mains version
 3.5m/5.5m/7.5m aluminum alloy telescopic rod
 Photovoltaic brush
 Drive motor kit
 Water control box (including 100W water pump)
 220V power converter
 8 m extension wire
 1.3 m pumping pipe
 Accessories: manual, Certificate, yellow water control valve, oil seal, elastic screw + screwdriver, plastic nut, hex, cable tie

C585B-3.5M/5.5M/7.5M

Mains version
 3.5m/5.5m/7.5m aluminum alloy telescopic rod
 Photovoltaic brush
 Drive motor kit
 Water control box (including 100W water pump)
 220V power converter
 8 m extension wire
 1.3 m pumping pipe
 Accessories: manual, Certificate, yellow water control valve, oil seal, elastic screw + screwdriver, plastic nut, hex, cable tie
 Brushless machine

C585C-3.5M/5.5M/7.5M

Lithium battery
 3.5m/5.5m/7.5m aluminum alloy telescopic rod
 Photovoltaic brush
 Drive motor kit
 8 m water wire
 Electric control spring wire
 1pc lithium battery pack
 1pc lithium battery charger
 1pc backpack
 Accessories: manual, Certificate, yellow water control valve, oil seal, elastic screw + screwdriver, plastic nut, hex, cable tie

C585D-3.5M/5.5M/7.5M

Lithium battery
 3.5m/5.5m/7.5m aluminum alloy telescopic rod
 Photovoltaic brush
 Drive motor kit
 8 m water wire
 Electric control spring wire
 1pc lithium battery pack
 1pc lithium battery charger
 1pc backpack
 Accessories: manual, Certificate, yellow water control valve, oil seal, elastic screw + screwdriver, plastic nut, hex, cable tie
 Brushless machine

C585E-3.5M/5.5M/7.5M

Mains version + lithium version
 3.5m/5.5m/7.5m aluminum alloy telescopic rod
 Photovoltaic brush
 Drive motor kit
 Water control box (including 100W water pump)
 220V power converter
 8 m extension wire
 1.3 m pumping pipe
 Power supply cable
 Electric control spring wire
 Lithium battery pack
 Lithium battery charger
 Backpack
 Accessories: manual, Certificate, yellow water control valve, oil seal, elastic screw + screwdriver, plastic nut, hex, cable tie

C585F-3.5M/5.5M/7.5M

Mains version + lithium version
 3.5m/5.5m/7.5m aluminum alloy telescopic rod
 Photovoltaic brush
 Drive motor kit
 Water control box (including 100W water pump)
 220V power converter
 8 m extension wire
 1.3 m pumping pipe
 Power supply cable
 Electric control spring wire
 Lithium battery pack
 Lithium battery charger
 Backpack
 Accessories: manual, Certificate, yellow water control valve, oil seal, elastic screw + screwdriver, plastic nut, hex, cable tie
 Brushless machine



C586A-3.5M/5.5M/7.5M

Mains version
 3.5m/5.5m/7.5m aluminum alloy telescopic rod
 8 m water wire
 2pcs photovoltaic brushes
 2pcs drive motor kit
 T-rod connection kit
 220v power converter
 8 m extension wire
 Accessories: manual, Certificate, oil seal, elastic screw + screwdriver, water control valve connector, plastic nut, hex, cable tie

C586B-3.5M/5.5M/7.5M

Mains version
 3.5m/5.5m/7.5m aluminum alloy telescopic rod
 8 m water wire
 2pcs photovoltaic brushes
 2pcs drive motor kit
 T-rod connection kit
 220v power converter
 8 m extension wire
 Accessories: manual, Certificate, oil seal, elastic screw + screwdriver, water control valve connector, plastic nut, hex, cable tie
 Brushless machine

C586C-3.5M/5.5M/7.5M

Lithium battery
 3.5m/5.5m/7.5m aluminum alloy telescopic rod
 8 m water wire
 2pcs photovoltaic brushes
 2pcs drive motor kit
 T-rod connection kit
 Electric control spring wire
 1pc lithium battery pack
 1pc lithium battery charger
 1pc backpack
 Accessories: manual, certificate, oil seal, water control valve connector, elastic screw + screwdriver, plastic nut, hex, cable tie

C586D-3.5M/5.5M/7.5M

Lithium battery
 3.5m/5.5m/7.5m aluminum alloy telescopic rod
 8 m water wire
 2pcs photovoltaic brushes
 2pcs drive motor kit
 T-rod connection kit
 Electric control spring wire
 1pc lithium battery pack
 1pc lithium battery charger
 1pc backpack
 Accessories: manual, certificate, oil seal, water control valve connector, elastic screw + screwdriver, plastic nut, hex, cable tie
 Brushless machine



C586E-3.5M/5.5M/7.5M

Mains version + lithium version
 3.5m/5.5m/7.5m aluminum alloy telescopic rod
 8 meters water wire,
 2pcs photovoltaic brushes
 2pcs drive motor kit
 T-rod connection kit
 Electric control spring wire
 1pc lithium battery pack
 1pc lithium battery charger
 1pc backpack
 220v power converter
 8 m extension wire
 Accessories: manual, Certificate, oil seal, elastic screw + screwdriver, plastic nut, hex, cable tie

C586F-3.5M/5.5M/7.5M

Mains version + lithium version
 3.5m/5.5m/7.5m aluminum alloy telescopic rod
 8 meters water wire,
 2pcs photovoltaic brushes
 2pcs drive motor kit
 T-rod connection kit
 Electric control spring wire
 1pc lithium battery pack
 1pc lithium battery charger
 1pc backpack
 220v power converter
 8 m extension wire
 Accessories: manual, Certificate, oil seal, elastic screw + screwdriver, plastic nut, hex, cable tie
 Brushless machine



CE

C581A-3.5M/5.5M/7.5M

Mains version
 3.5m/3.5m/7.5m aluminum alloy telescopic rod
 1pc photovoltaic special rolling brush head
 Drive motor kit
 220V power converter
 8 m extension wire
 Accessories: manual, Certificate,
 yellow water control valve, oil seal,
 elastic screw + screwdriver, plastic nut, hex, cable tie

C581B-3.5M/5.5M/7.5M

Mains version
 3.5m/3.5m/7.5m aluminum alloy telescopic rod
 1pc photovoltaic special rolling brush head
 Drive motor kit
 220V power converter
 8 m extension wire
 Accessories: manual, Certificate,
 yellow water control valve, oil seal,
 elastic screw + screwdriver, plastic nut, hex, cable tie
 Brushless machine

C581C-3.5M/5.5M/7.5M

Lithium battery
 3.5m/3.5m/7.5m aluminum alloy telescopic rod
 1pc photovoltaic special rolling brush head
 Drive motor kit
 8 m water wire
 Electric control spring wire
 1pc lithium battery pack
 1pc lithium battery charger
 1pc backpack
 Accessories: manual, Certificate,
 yellow water control valve, oil seal,
 elastic screw + screwdriver, plastic nut, hex, cable tie

C581D-3.5M/5.5M/7.5M

Lithium battery
 3.5m/3.5m/7.5m aluminum alloy telescopic rod
 1pc photovoltaic special rolling brush head
 Drive motor kit
 8 m water wire
 Electric control spring wire
 1pc lithium battery pack
 1pc lithium battery charger
 1pc backpack
 Accessories: manual, Certificate,
 yellow water control valve, oil seal,
 elastic screw + screwdriver, plastic nut, hex, cable tie
 Brushless machine

C581E-3.5M/5.5M/7.5M

Mains version + lithium version
 3.5m/3.5m/7.5m aluminum alloy telescopic rod
 1pc photovoltaic special rolling brush head
 Drive motor kit
 220V power converter
 8 m extension wire
 Power supply cable
 Electric control spring wire
 1pc lithium battery pack
 Lithium battery charger
 1pc backpack
 Accessories: manual, Certificate,
 yellow water control valve, oil seal,
 elastic screw + screwdriver, plastic nut, hex, cable tie

C581E-3.5M/5.5M/7.5M

Mains version + lithium version
 3.5m/3.5m/7.5m aluminum alloy telescopic rod
 1pc photovoltaic special rolling brush head
 Drive motor kit
 220V power converter
 8 m extension wire
 Power supply cable
 Electric control spring wire
 1pc lithium battery pack
 Lithium battery charger
 1pc backpack
 Accessories: manual, Certificate,
 yellow water control valve, oil seal,
 elastic screw + screwdriver, plastic nut, hex, cable tie
 Brushless machine

