



EGO700

IoT Multifunction Power Meter



4G / LoRa Wireless
Communication



P2P Remote Configuration
& Free Maintenance



Multiple Platform
Transmission



Data Cache
& Retransmit

Feature

Combine Measuring and Electricity Monitoring Into One

- Full Parameter Measuring and Power Quality Monitoring
- Measure and alarm for residual current and cable temperature

Reliable Data Transfer

- 7 days Data Cache & Retransmit
- 10 sec. keep working to posting POWER-OFF alarm
- 1 sec. real-time data upload

Multiple Communication Protocol

- 4G / LoRa / RS485

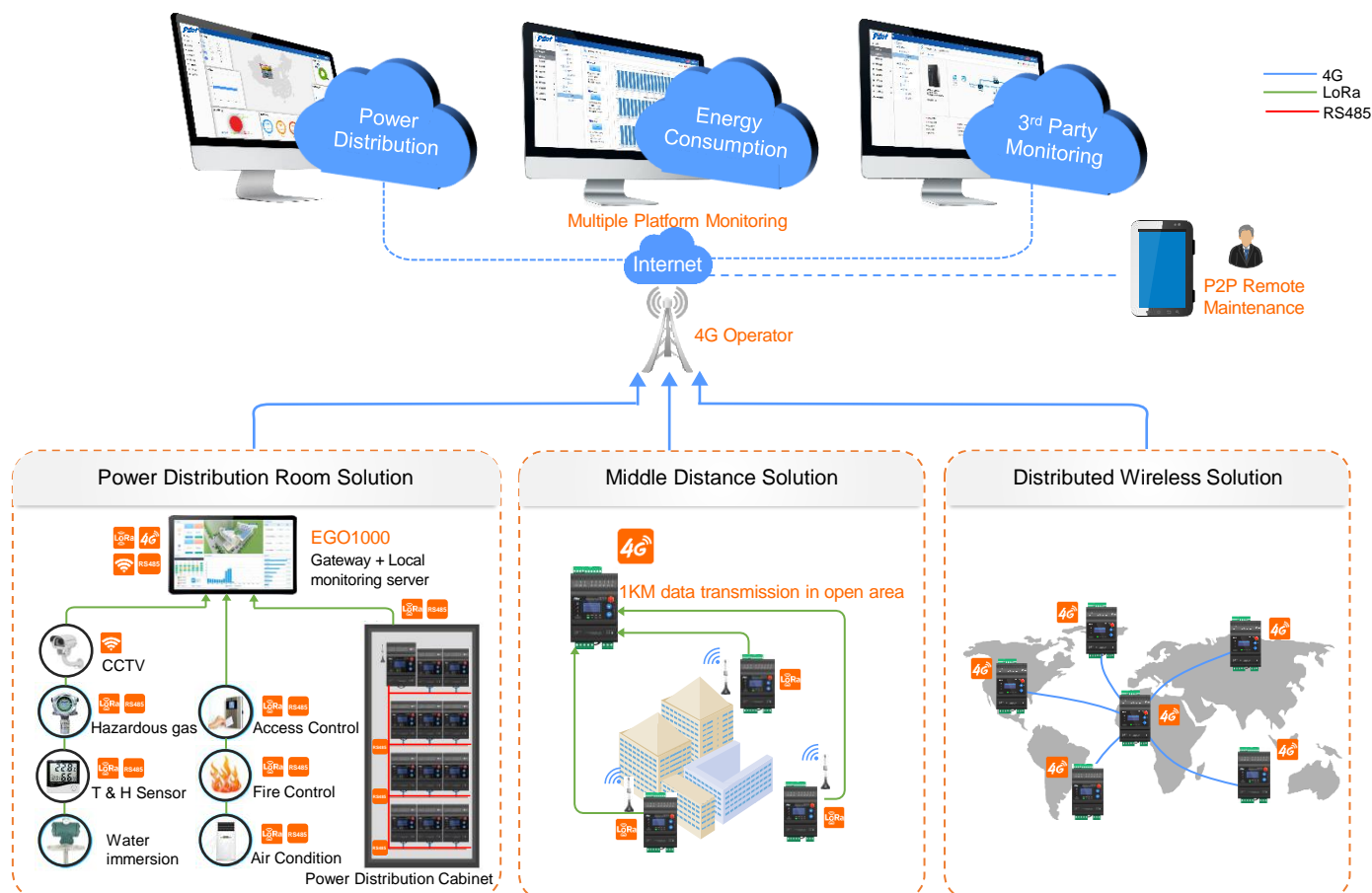
Remote Support and Engineering Simplification

- P2P remote configuration & free maintenance
- Phase-sequence auto adjustment
- Split core CT for easy installation



EGO700

System Structure



Function



Measurement

- voltage, current, active power, reactive power, apparent power, power factor, frequency, active energy, reactive energy, apparent energy, voltage and current phase angle, cable temperature, residual current, switch detection
- Latest 10 years, 12 months, 31 days historical energy



Power Quality Analysis

- Three phase voltage/current, 63rd harmonic analysis, voltage/current unbalance



Demand Calculation

- Maximum and real-time demand of power and current
- Real-time demand, daily and monthly max. demand



Communication

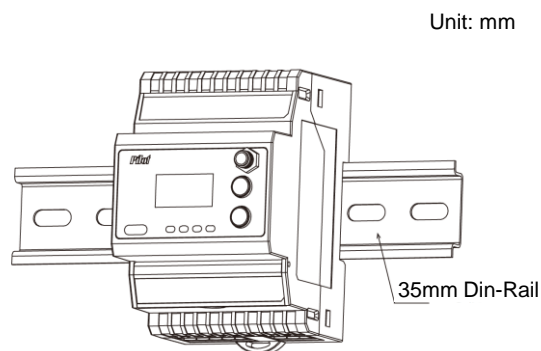
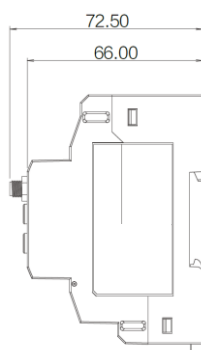
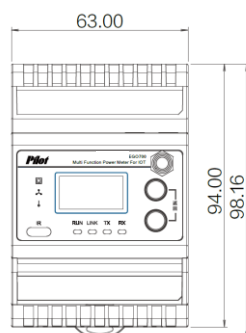
- Standard 1 RS485 and 1 infrared communication
- 4G / LoRa optional, support Modbus, Http, Mqtt communication etc, support Modbus-RTU and Modbus-TCP, register is definable
- Support break-point transfer



Setpoint Alarm

- Support alarming of over-voltage, under-voltage, over-current, under-current, lost phase, power over limit, over temperature, leakage current and power failure with SOE time record.

Dimension and Installation





Technical Specification

Power Supply	AC 85~265V / DC 100~300V	Residual Current	1 x 0-8000mA
		Cable Temperature	4 x 0-150°C
Rated Current	1.67mA, 5A/1.67mA (Standard CT)	LoRa	470-510Mhz, 1KM open area
		RS485	4800-38400bps
Rated Voltage	3x57.7/100V, 3x220/380V	Break-point transfer	7 days data cache (1 sampling point / 5min.)
Digital Input	Wet contact, external power supply: 220V, when <60V, open, when >140V, closed, Max. Input: 300V	Environment	Operation Temperature: -25°C~+70°C Storage Temperature: -40°C~+85°C Operation Humidity: 5% ~ 95% Non-condensing
Connection Mode	3 Phase 4 Wire	EMC Standard	Electrostatic Discharge Immunity Test IEC61000-4-2:2001
	3 Phase 3 Wire		RF Electromagnetic Field Immunity testing IEC61000-4-3:2002
LTE Wireless Communication	LTE-FDD B1/B3/B5/B8		Electrical fast transient immunity test IEC61000-4-4:2006
	LTE-FDD B34/B38/B39/B40/B41		Surge immunity test IEC61000-4-5:2005
			Injected Current Immunity Test IEC61000-4-6:2006
			Electromagnetic emission limit CISPR22: 2006
			Voltage sag and short-time interruption Immunity testing Passed

Parameter	Measurement Range	Accuracy
Voltage	Phase Voltage: 10V~400V Line Voltage: 10V~500V	0.2%
Primary Voltage	Max. 1000kV	--
Current	5mA~6.5A	0.2%
Primary Current	Max. 100000A	--
Frequency	40~70Hz	0.1%
Active Energy	0~99999999.9 kWh	0.5%
Reactive Energy	0~99999999.9 kvarh	2%
Active Power	Single Phase: 0 ~ ±9999MW/Mvar	0.5%
Reactive Power	Total: 0 ~ ±9999MW/Mvar	1.0%
Harmonic Ratio	0%~100%	B Level

Current Transformer

Model	Application
CTC	 <p>Applied to renovation project with CT, installation without power off</p>
CTO	 <p>Applied to additional large CT of 5A access scheme</p>

Order Information

EGO700 - □ - □

CT	CTO — External 5A Split core CT
	CTC — External 5A Solid core CT
Communication	RS485 — 1 x RS485
	LoRa — LoRa, RS485
	4G — Lte(4G), RS485
	All — Lte(4G), LoRa, RS485



ZHUHAI PILOT TECHNOLOGY CO., LTD.

Add: No.15, 6th Road, Chuangxin Haian, Tangjia High-tech Zone, Zhuhai,
Guangdong, China
Tel: +86 756 3629688
Email: pilotego@163.com

Post Code: 519085
Fax: +86 756 3629670
Web: <http://en.pilot.com.cn>