



EGO700-L

IoT Multifunction Power Meter



4G / LoRa Wireless
Communication



P2P Remote Configuration
& Free Maintenance



Multiple Platform
Transmission



Data Cache
& Retransmit

Feature

Combine Measuring and Electricity Monitoring Into One

- Full Parameter Measuring and Power Quality Monitoring
- Measure and alarm for cable temperature

Reliable Data Transfer

- 7 days Data Cache & Retransmit
- 10 sec. keep working to posting POWER-OFF alarm
- 1 sec. real-time data upload

Multiple Communication Protocol

- 4G / LoRa / RS485/ LAN
- Modbus RTU, Modbus TCP, HTTP, MQTT, IEC104, DLMS*, Bacnet*
(Marked * is available for customized model)

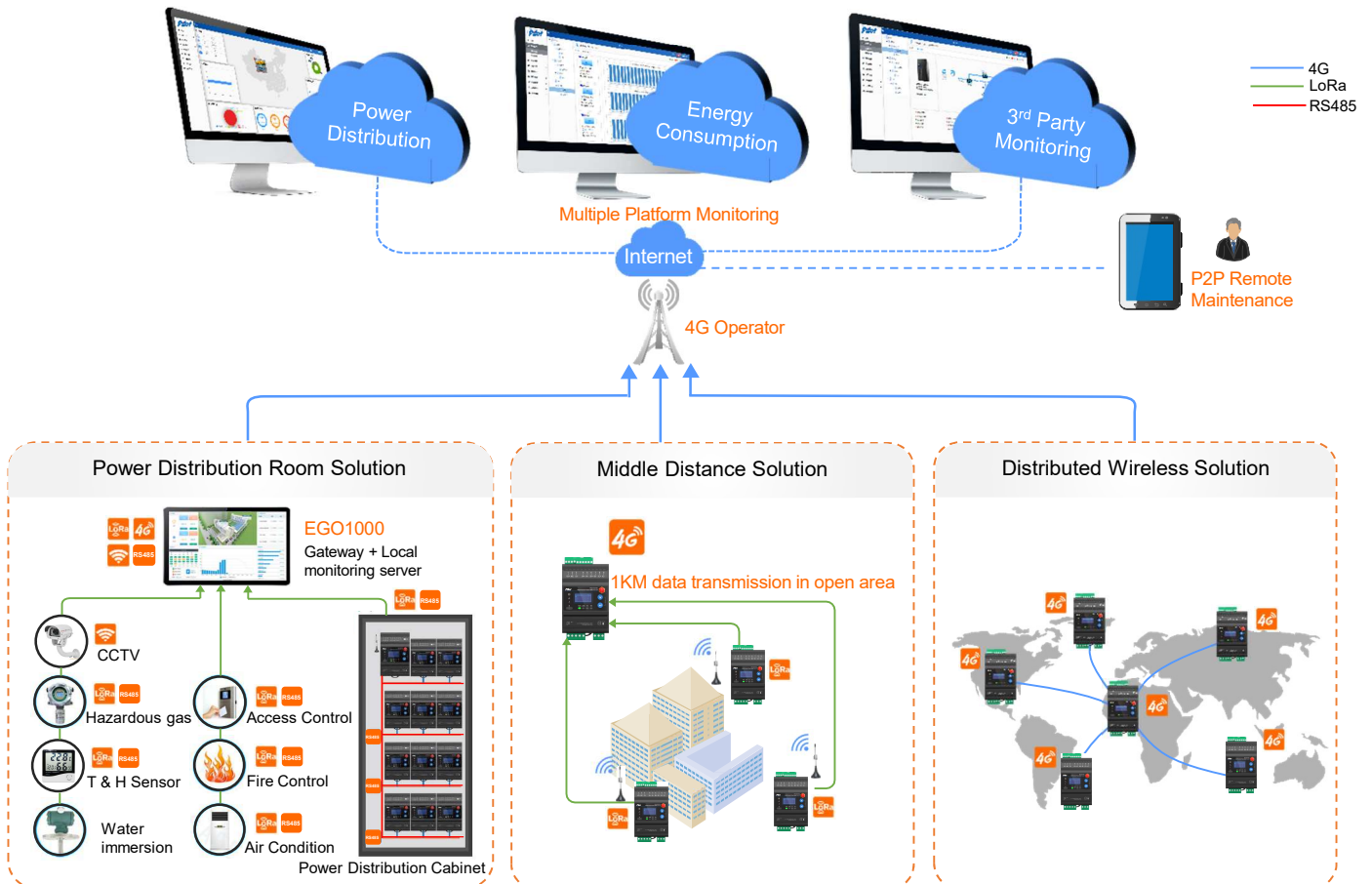
Remote Support and Engineering Simplification

- P2P remote configuration & free maintenance
- Phase-sequence auto adjustment
- Split core CT for easy installation



EGO700-L

System Structure



Function



Measurement

- voltage, current, active power, reactive power, apparent power, power factor, frequency, active energy, reactive energy, apparent energy, voltage and current phase angle, cable temperature, switch detection
- Latest 10 years, 12 months, 31 days historical energy



Power Quality Analysis

- Three phase voltage/current, 63rd harmonic analysis, voltage/current unbalance



Demand Calculation

- Maximum and real-time demand of power and current
- Real-time demand, daily and monthly max. demand



Communication

- Standard 1 RS485, 4G / LoRa/ LAN optional
- Support Modbus RTU, Modbus TCP, HTTP, MQTT, IEC104, DL/T645-2007 communication etc (DLMS, Bacnet is available for customized model)
- Register is definable, support break-point transfer

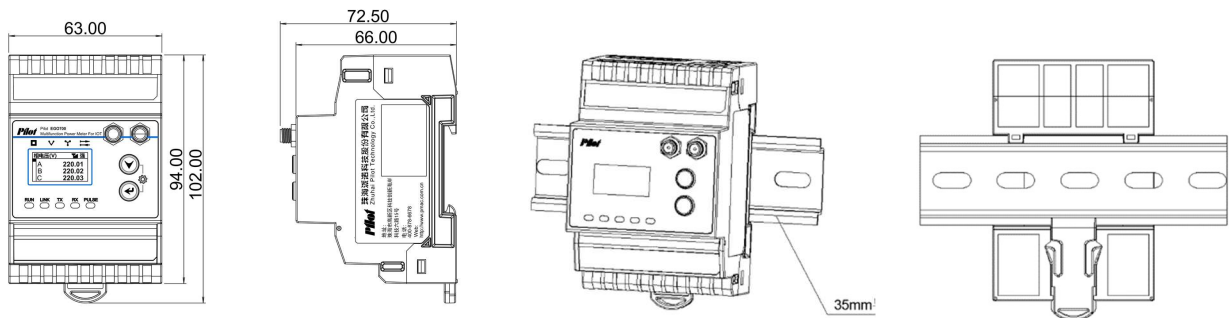


Setpoint Alarm

- Support alarming of over-voltage, under-voltage, over-current, under-current, lost phase, power over limit, over temperature, and power failure with SOE time record.

Dimension and Installation

Unit: mm




Technical Specification

Power Supply	AC 85~265V Or DC 100~300V	LTE Wireless Communication	LTE-FDD B1/B3/B5/B8 LTE-FDD B34/B38/B39/B40/B41
		LoRa	470-510Mhz, 1KM open area (customized model is 915Mhz)
Rated Current	1A or 5A, 5A/1.67mA CT (optional) 100A/33.3mA CT (optional)	RS485	4800-38400bps, Modbus-RTU
		LAN port	Modbus TCP/IP, 10M/100M Ethernet (customized model)
Rated Voltage	3x57.7/100V, 3x220/380V	Break-point transfer	7 days data cache (1 sampling point / 5min.)
Digital Input	Wet contact, external power supply: 220V, when <60V, open, when >140V, closed, Max. Input: 300V Or Dry contact: internal supply 24Vdc	Environment	Operation Temperature: -25°C~+70°C Storage Temperature: -40°C~+85°C Operation Humidity: 5% ~ 95% Non-condensing
Relay output	Node capacity: 250Vac/ 5A	EMC Standard	Electrostatic Discharge Immunity Test IEC61000-4-2:2001 RF Electromagnetic Field Immunity testing IEC61000-4-3:2002 Electrical fast transient immunity test IEC61000-4-4:2006 Surge immunity test IEC61000-4-5:2005 Injected Current Immunity Test IEC61000-4-6:2006 Electromagnetic emission limit CISPR22: 2006 Voltage sag and short-time interruption Immunity testing Passed
Connection Mode	3 Phase 4 Wire 3 Phase 3 Wire		
Cable Temperature	4 channels of NTC sensor, range: 0-149°C		

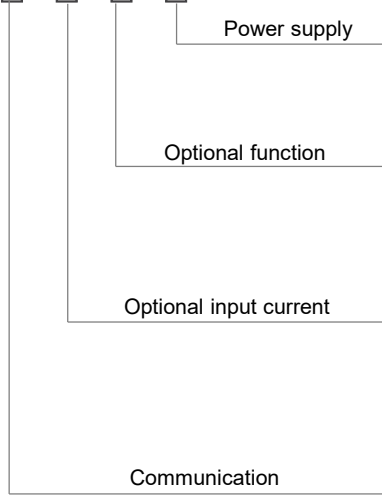
Parameter	Measurement Range	Accuracy
Voltage	Phase Voltage: 10V~400V Line Voltage: 10V~690V	0.2%
Primary Voltage	Max. 1000kV	--
Current	5mA~6.5A	0.2%
Primary Current	Max. 100000A	--
Frequency	40~65Hz	0.1%
Active Energy	0~99999999.9 kWh	0.5%
Reactive Energy	0~99999999.9 kvarh	2%
Active Power	Single Phase: 0 ~ ±9999MW/Mvar	0.5%
Reactive Power	Total: 0 ~ ±9999MW/Mvar	1.0%
Harmonic Ratio	0%~100%	Class B

Split core CT (optional)

Model		Application
	CTO	Hole diameter: 9mm Applied to renovation project where already installed other CT
	CTO100	Hole diameter: 15mm Applied to renovation project where max. current < 100A, installation without power off

Order Information

EGO700-L - - - -



P1	Aux. power supply AC 85~265V or DC 100~300V
P2	Self-supply from voltage input L1
T	4 channels temperature measurement
SDR	2 digital input (dry contact) + 2 relay output
SWR	2 digital input (wet contact) + 2 relay output
CTC	Type for connecting with 5A or 1A CT
CTO	Comes with split core CT 5A/ 1.67mA
CTO100	Comes with split core CT 100A/ 33.3mA
RS485	RS485
LoRa	LoRa, RS485
4G	Lte(4G), RS485
All	Lte(4G), LoRa, RS485
LAN	LAN, RS485 (customized)

 **ZHUHAI PILOT TECHNOLOGY CO., LTD.**

Add: No. 15, Keji 6 Road, ChuangXin Hai'an, Tangjia Hi-tech Zone,
 Zhuhai, Guangdong 519085, China Post Code: 519085
 Tel: +86 756 36296888 +86-756 6931888 ext 6088
 Email: marketing@pmac.com.cn Web: http://en.pmac.com.cn