

4.5 Wide-Straight Plate

Operation Manual





CONTENTS

Why choose Fule?

Our strengths

- The company is a national high-tech enterprise integrating research and development, production and sales of medical devices, with a full intelligent processing equipment production line.
- The establishment of the Academician Expert Studio helps to enhance the R&D capabilities of Fule and further deepen the cooperation between industry, academia, and research; Approved postdoctoral research workstation.
- The hardware facilities are complete, the R&D team is excellent, and we work closely with clinical experts, obtaining more than 100 domestic and foreign patents.
- Based on the agent cooperation model, establish a nationwide sales and service network, supply products to nearly a thousand tertiary hospitals nationwide, and export to more than 20 overseas countries.

Product Advantages01

Instruction For Use02

Surgical Procedures03

Product Information18

Surgical Instruments19



Beijing Fule Science & Technology Development Company

Zipcode: 101204
SaleOfficeTel: 010-60999861/2Fax: 010-60999863/8741
Tel:010-60999866/32/75/17 E-mail address:YXSC@fulekeji.com
Address: 50 MafangIndustrial Park West District,Pinggu District, Beijing

Products Advantages

- The steel cable is perfectly combined with the bone plate and is firmly fixed to the bone plate.
- The cables can all be locked by means of a set screw in the rotating bone plate.
- The steel cable is combined with the bone plate to hold it in place both internally and externally.



Instruction For Use

- **【Indications】**
Comminuted fracture of the bone trunk

Surgical Procedures

【Step 1】 Incision

- Surgical site incision.
- The extraosseous soft tissue is separated, and the hook is pulled to expose the fracture.

Surgical Procedures

【Step 2】 Periosteal detachment

- Periosteal dissection.
- Clearly expose the fracture.



Surgical Procedures

【Step 3】 Reduction

- Reduce the fracture ends using tools such as bone levers and reduction forceps.



Surgical Procedures

【Step 4】 Select the steel plate

- Select the appropriate steel plate.
- If necessary, use tools to shape the plate to make it more suitable for the bone surface.



Surgical Procedures

【Step 5】 Temporary fixation

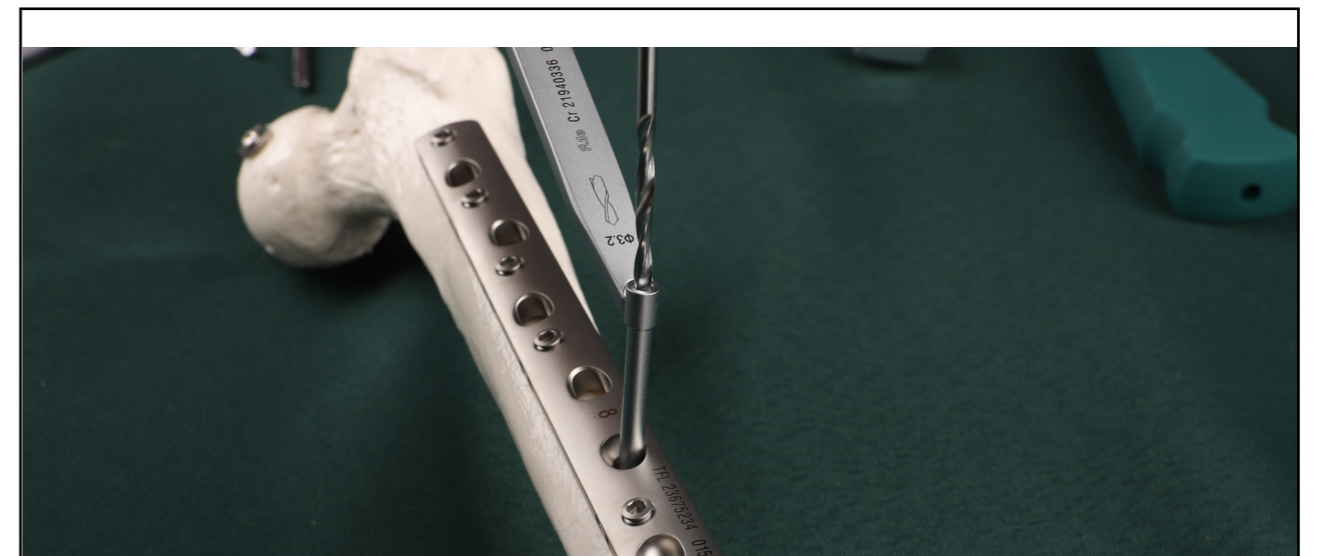
- Plates and bones can be temporarily fixed using positioning pins and plate holding forceps.



Surgical Procedures

【Step 6】 Drilling

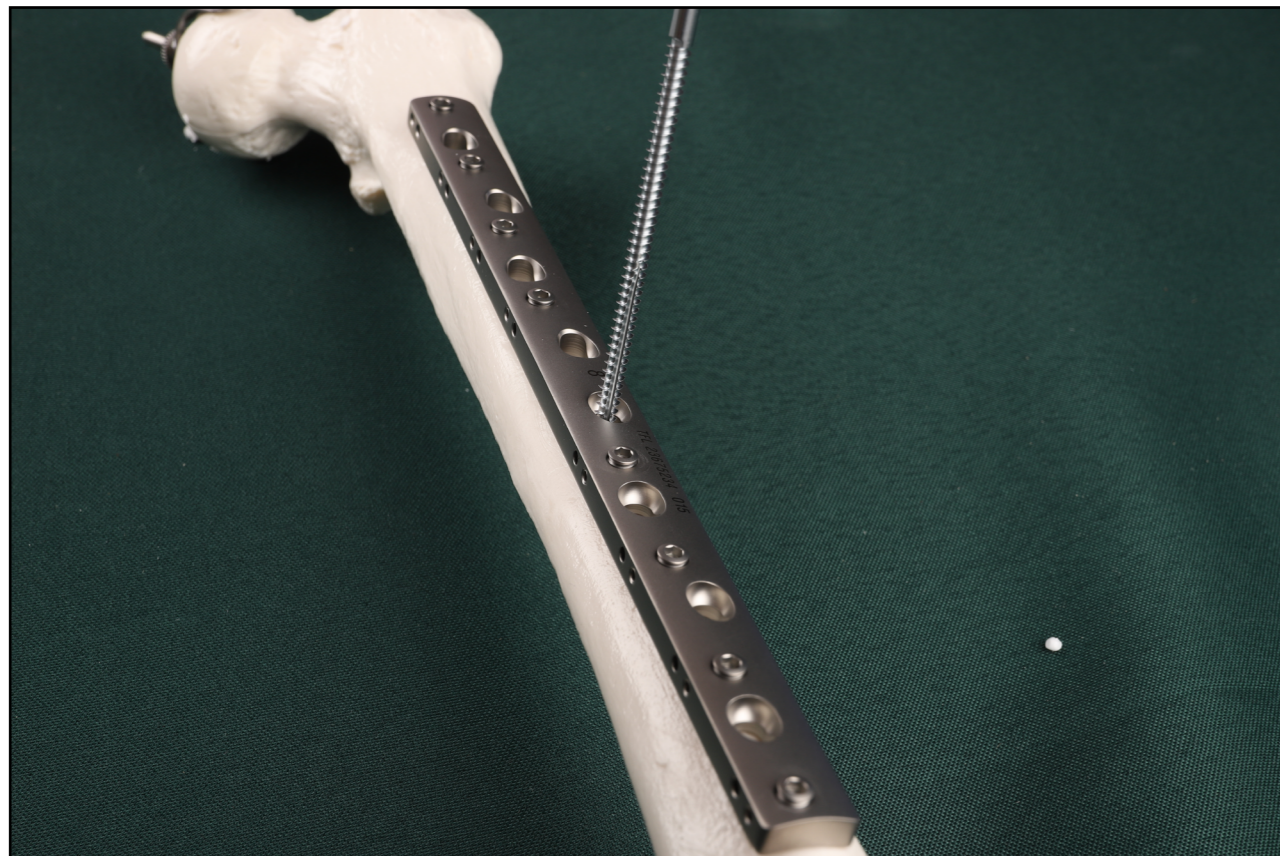
- Drill holes with drill.



Surgical Procedures

【Step 7】 Tapping

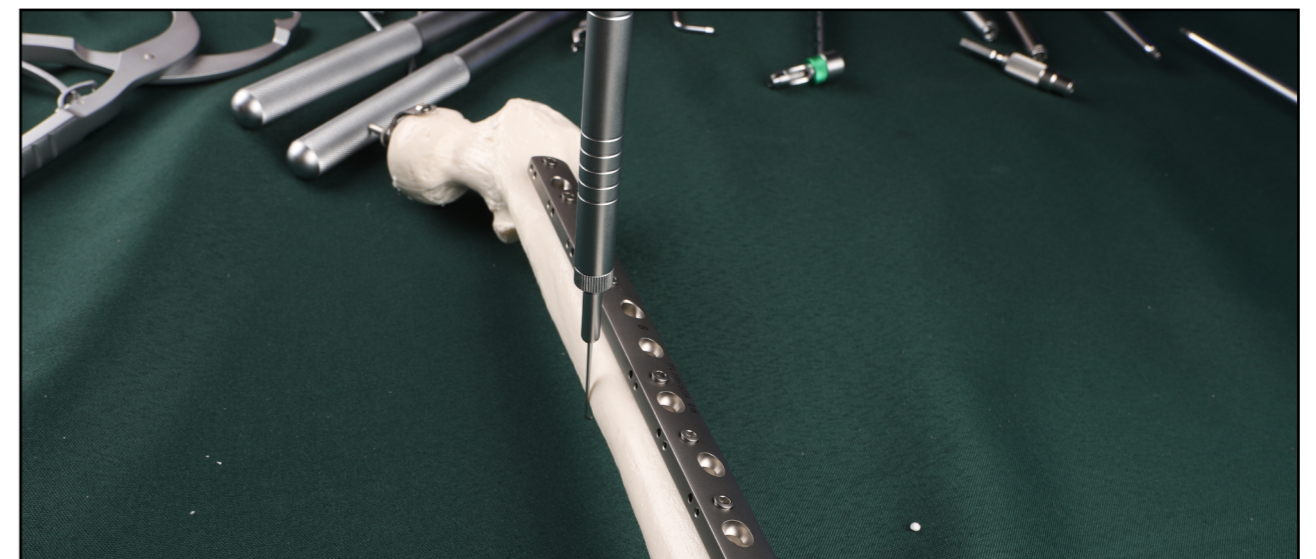
- Perform tapping using a tap.



Surgical Procedures

【Step 8】 Mesuring

- Use a depth gauge to measure the length of the screw.



Surgical Procedures

【Step 9】 Screws Insertion

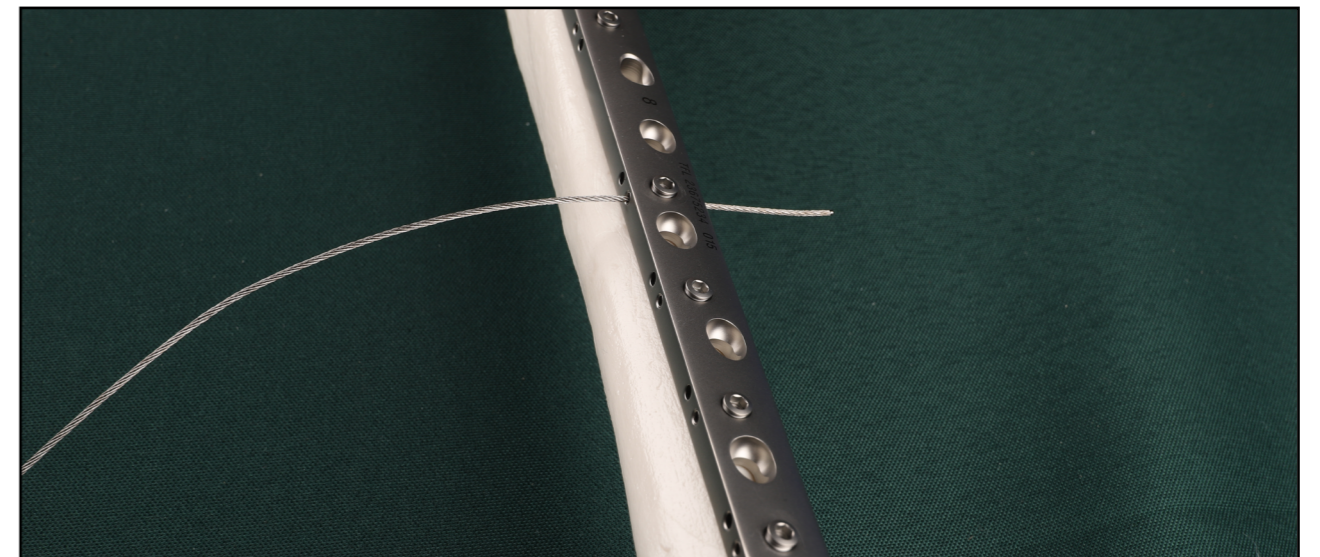
- Use a matching wrench to insert the screws.



Surgical Procedures

【Step 10】 Place the cable

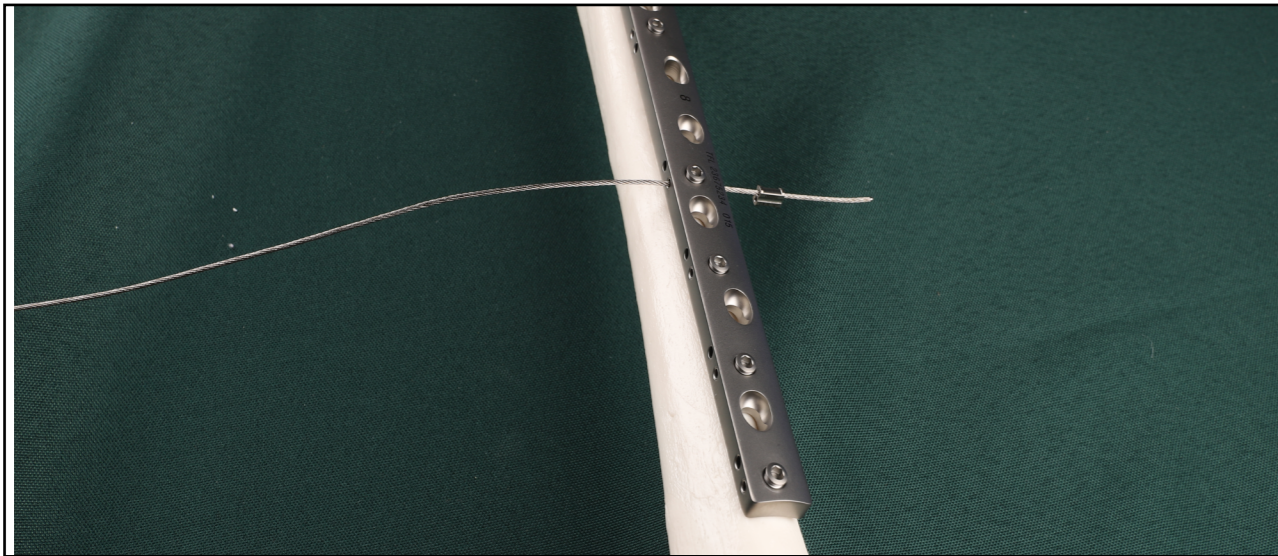
- Use a guide drill to place the round cable into the hole beside the plate.



Surgical Procedures

【Step 11】 Insert the Lock Buckle

- Insert the lock buckle.



Surgical Procedures

【Step 12】 Locking screws

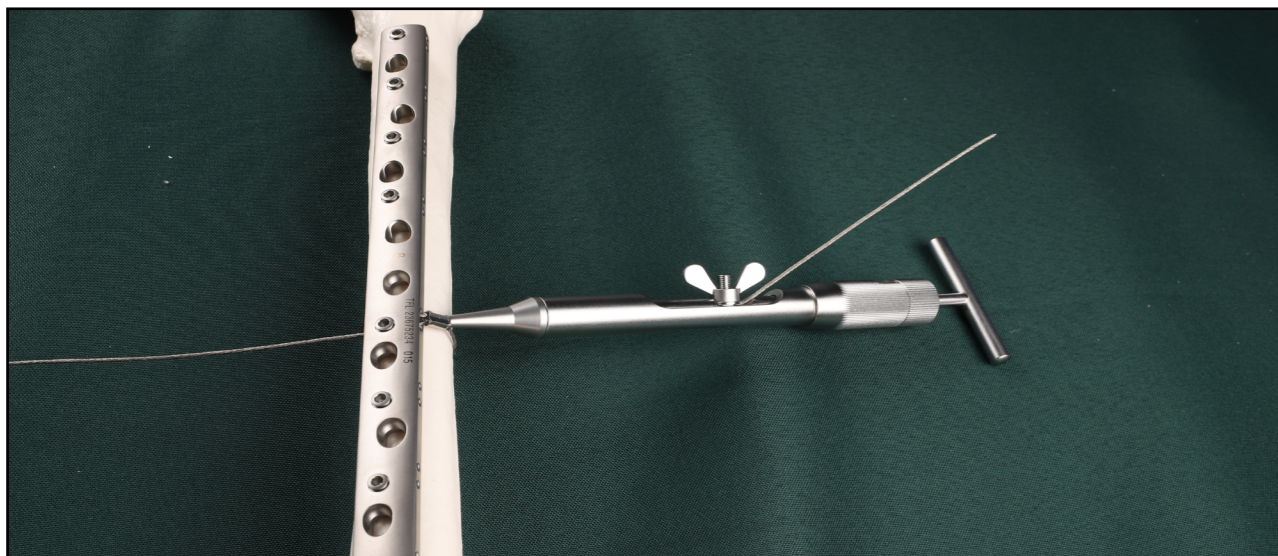
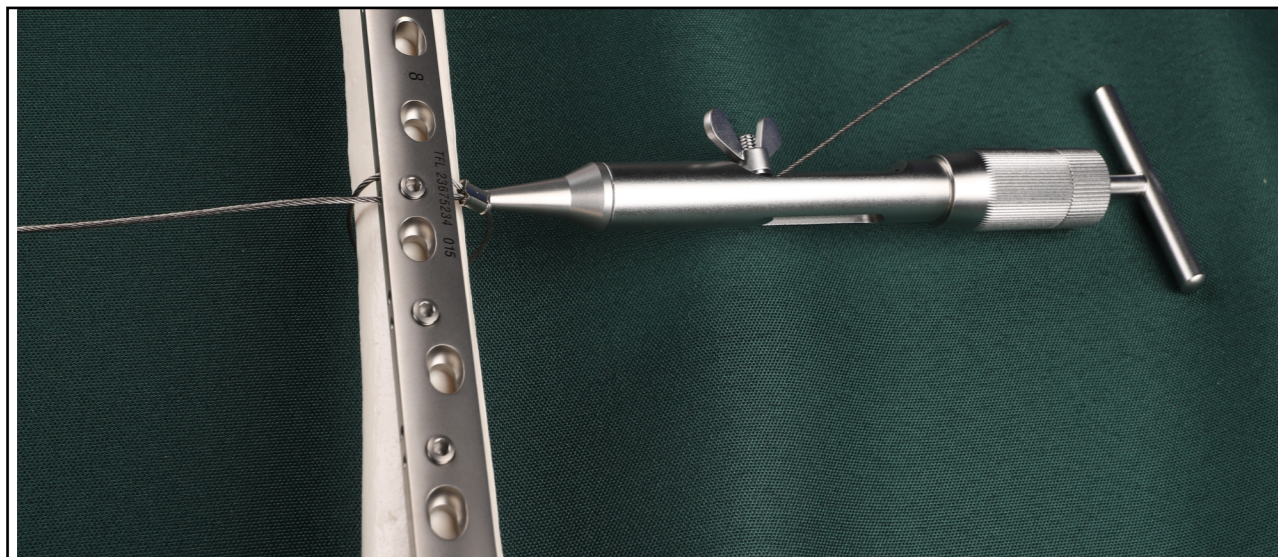
- Use a wrench to lock the screws.



Surgical Procedures

【Step 13】 Lock the cables

- Use the holder and sleeve to lock the cable.



Surgical Procedures

【Step 14】 Cut the cable

- Cut the excess cables.



Surgical Procedures

【Step 8】

Suturing

- Confirm the fixation result under fluoroscopy.
- If satisfactory, irrigate and suture the wound.

Product Information

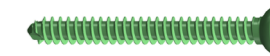


4.5 Wide Plate

head thickness	stem thickness	head width	stem width
6	6	16.5	16.5

Used with Φ 4.5mm Ti-Screw, Used for femoral diaphysis comminuted fracture.

Description	Length (mm)	Product Code
6 holes	187	4839006187
8 holes	246	4839008246
10 holes	305	4839010290

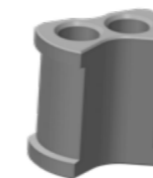


Ti-Screw (HB4.5)



Round Cable

Description	Length (mm)	Product Code
ϕ 1.0 \times 520	520	7101610520
ϕ 1.3 \times 520	520	7101613520
ϕ 1.7 \times 520	520	7103617520



Shaped crimp I

配合 ϕ 1.0/ ϕ 1.3/ ϕ 1.7 缆索使用
Used with ϕ 1.0/ ϕ 1.3/ ϕ 1.7 cables.

规格 Description	长度 Length (mm)	产品编码 Product Code
ϕ 1.0	8	7102610000
ϕ 1.3	8	7102613000
ϕ 1.7	8	7102617000

Surgical Instruments

4.5/5.0/6.5 Orthopedic Plate Instrument List (418-503)

No.	Name	Specification	Product Code	Quantity	Diagrams	Remarks
1	Bone Drill (III)	Φ4.3	418-145	2		<p>5.0锁定钉 (39356500XX)</p>
2	Orthopedic Locator	Φ4.3	418-531	2		
3	Wrench (LShaped Hex)	S=2.5	419-218	1		
4	Tap (IV)	Φ5.0	418-152	1		
5	Guider (LCP V)	Φ4.3	418-063	2		
6	Anti-torque wrench (Torx)	4.0N·M	418-561	1		
7	Screw Holder (LCP II)	LCP5.0	418-570	1		

4.5/5.0/6.5 Orthopedic Plate Instrument List (418-503)

No.	Name	Specification	Product Code	Quantity	Diagrams	Remarks
8	Bone Drill (I)	Φ3.2	418-028	2		<p>4.5普通钉 (35396450XX)</p>
9	Tap (IV)	HA4.5	418-034	1		
10	Countersink Drill	Φ8.0	418-042	1		
11	Guider(LC-DCP Basic)	Φ3.2-Φ4.5	418-053	1		
12	Guider (LC-DCP Universal II)	Φ3.2-Φ4.5	418-064	1		
13	Guider (LC-DCP Basic)	Φ3.2	418-065	1		
14	Guider (VII)	Φ3.2	418-582	1		
15	Screw Holder (HA II)	HA4.5	418-690	1		
16	Plate Shape Device	4.5A	418-093	1		
		4.5B	418-094	1		

Surgical Instruments

4.5/5.0/6.5 Orthopedic Plate Instrument List (418-503)

No.	Name	Specification	Product Code	Quantity	Diagrams	Remarks
17	Bone Drill (I)	Φ4.5	418-029	1		<p>6.5普通钉 (3541665XXX)</p>
18	Tap (I)	HB6.5	418-035	1		
19	Guider (Double-end I)	Φ3.2-Φ6.5	418-054	1		
20	Type C Drill	/	418-590	1		
21	Guider (VI)	Φ4.5	418-581	1		

4.5/5.0/6.5 Orthopedic Plate Instrument List (418-503)

No.	Name	Specification	Product Code	Quantity	Diagrams	Remarks
22	Guide Pin (I)	Φ2.5	418-451	1		<p>6.5小头锁定螺钉 (3928665XXX)</p>
23	Depth Gauge (V)	Φ2.5	418-542	1		
24	Guider (LCP V)	Φ5.0	418-630	1		
25	Guider (II)	Φ2.5	418-631	1		
26	Hollow Drill (I)	Φ5.0/Φ2.5	418-195	1		
27	Positioning Device	Φ5.0	418-532	1		
28	Positioning Pin (Thread I)	Φ2.5×250	419-016	2		
29	Wrench (Hollow Hex)	S=4.0	418-563	1		
30	Wrench (Hex)	S=4.0	418-564	1		

Surgical Instruments

4.5/5.0/6.5 Orthopedic Plate Instrument List (418-503)						
No.	Name	Specification	Product Code	Quantity	Diagrams	Remarks
31	Positioning Pin (Polish Rod I)	Φ2.0×250	418-012	3		4.5/5.0/6.5 General equipment
32	Positioning Pin (Thread I)	Φ2.0×250	418-013	3		
33	Wrench (Star)	T25	418-560	2		
34	Wrench (Star)	T25	418-562	1		
35	Depth Gauge (IV)	/	418-541	1		
36	Quick-Change Handle (Straight I)	large	418-600	1		
37	Connector (II)	/	411-680	1		
38	Quick-Change Handle (TShaped II)	/	411-660	1		
39	Clip-holding Forceps	large	418-610	1		

4.5/5.0/6.5 Orthopedic Plate Instrument List (418-503)						
No.	Name	Specification	Product Code	Quantity	Diagrams	Remarks
40	Periosteal Dissector (round)	8	418-640	1		4.5/5.0/6.5 General equipment
41	Periosteal Dissector (flat)	16	418-641	1		
42	Plate Bender (III)	left	418-650	1		
		right	418-651	1		
43	Reset Forceps (Sharp End IV)	large	418-660	2		
44	Reset Forceps (Bent)	/	418-661	2		
45	Plate Holding Forceps (II)	/	418-670	2		
46	Elevator (I)	16	418-680	1		
47	Elevator (I)	44	418-681	1		

Surgical Instruments

4.5/5.0/6.5 Orthopedic Plate Instrument List (418-503)						
No.	Name	Specification	Product Code	Quantity	Diagrams	Remarks
48	Broken Nail Extractor (I)	4.5/6.5	418-136	1		4.5/5.0/6.5 General equipment
49	Screw Extractor (Slip I)	Φ3.5	418-137	1		
50	Bone Drill (V)	Φ6.0	418-146	1		
51	4.5/ 5.0/ 6.5Screw box		418-550	1		
52	Reset Forceps (Type C)	large	418-662			
53	Container (4.5/5.0/6.5)		418-700	1		

4.5/5.0/6.5 Orthopedic Plate Instrument List (418-503)						
No.	Name	Specification	Product Code	Quantity	Diagrams	Remarks
1	Angle ruler (I)	20° /60° /100°	419-380			5.0 Children's osteotomy
		30° /70° /80°	419-390			
		40° /50° /90°	419-400			
3	Bone Measuring Apparatus(I)	SW6	419-440			
4	Depth Gauge (VII)	LCP3.5/LCP5.0	419-450			
5	Guider (VIII)	LCP5.0	418-580			
6	Angle ruler (II)	/	419-530			