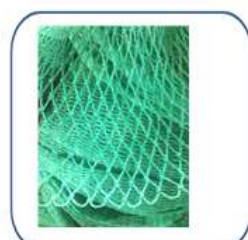


# QINGDAO ZHUOYA MACHINERY CO.LTD



## **Main Product**

- Plastic Broom Filament Production Machine Line**
- Plastic Brush Filament Production Machine Line**
- Plastic Rope Filament Production Machine Line**
- Plastic Synthetic Hair Filament Production Machine Line**
- Plastic Cosmetic Brush Filament Production Machine Line**
- Plastic Paint Brush Filament Production Machine Line**
- Plastic Synthetic Eyelash Filament Production Machine Line**
- Plastic Tooth Brush Filament Production Machine Line**
- Fishing Line Fishing Net/Safety Net Filament Production Line**

# Plastic Broom Filament Production Machine Line

## 塑料扫把丝拉丝机



### 简要描述 Brief introduction

原料为 PET 瓶片，PET 颗粒料，PP 颗粒料。

本生产线主要用于各种塑料扫把丝，包括直丝、波纹丝的生产。也可以用来生产塑料圣诞树松针叶丝。单丝的形状一般是圆形、三角形、五角形等，可根据客户要求定制。

The raw materials are PET bottle flakes, PET pellets, and PP pellets.

This production line is mainly used for the production of various plastic broom filament, including straight filament and corrugated filament. It can also be used to produce plastic Christmas tree pine needle filament.

The shape of the monofilament is generally round, triangle, pentagonal, etc., which can be customized according to customer requirements.

### 主要技术参数 The main Technical Parameters

型号 Model	丝径范围 Filament Dia.	电机功率 Main Motor	生产能力 Production capacity	装机功率 Installed Power
LS-SJ75	0.10mm-2.5mm	22KW	90-100kg/h	80KW
LS-SJ80	0.10mm-2.5mm	30KW	100-125kg/h	90KW
LS-SJ90	0.10mm-2.5mm	37KW	160-180kg/h	100KW



# Plastic Brush Filament Production Machine Line

## 塑料刷丝拉丝机



### 简要描述 Brief introduction

原料为PET瓶片，PET 颗粒料，PP 颗粒料。

本生产线主要用于各种塑料刷丝，包括直丝、波纹丝的生产。也可以用来生产塑料圣诞树松针叶丝。单丝的形状一般是圆形、三角形、五角形等，可根据客户要求定制。

The raw materials are PET bottle flakes, PET pellets, and PP pellets.

This production line is mainly used for the production of various plastic brush filament, including straight filament and corrugated filament. It can also be used to produce plastic Christmas tree pine needle filament.

The shape of the monofilament is generally round, triangle, pentagonal, etc., which can be customized according to customer requirements.

### 主要技术参数 The main Technical Parameters

型号 Model	丝径范围 Filament Dia.	电机功率 Main Motor	生产能力 Production capacity	装机功率 Installed Power
LS-SJ75	0.10mm-2.5mm	22KW	90-100kg/h	80KW
LS-SJ80	0.10mm-2.5mm	30KW	100-125kg/h	90KW
LS-SJ90	0.10mm-2.5mm	37KW	160-180kg/h	100KW



# Plastic Rope Filament Production Machine Line

## 塑料绳丝拉丝机



### 简要描述 Brief introduction

原料为PET瓶片，PP 粒料，PE 粒料  
本生产线主要用于绳丝，渔网丝，拉链丝的生产。

Raw materials is PET flakes, PP pellets, PE pellets  
This production line is mainly used to produce rope, zipper filament, etc.

### 主要技术参数 The main Technical Parameters

型号 Model	丝径范围 Filament Dia.	电机功率 Main Motor	生产能力 Production capacity	装机功率 Installed Power
LS-SJ75	0.14mm-0.5mm	22KW	90-100kg/h	100KW
LS-SJ80	0.14mm-0.5mm	30KW	100-125kg/h	120KW
LS-SJ90	0.14mm-0.5mm	37KW	160-180kg/h	150KW





# Synthetic Hair Filament Production Machine line

## 假发丝拉丝机



### 简要描述 Brief introduction

原料为 PP/PET/PA/PVC 原料。

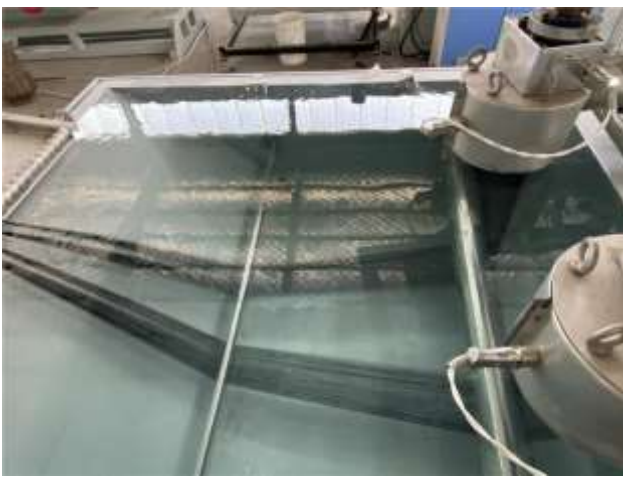
本生产线主要用于化纤假发丝的生产。

Raw material is PP/PET/PA/PVC virgin material.

This production line is mainly used to produce synthetic wig hair filament.

### 主要技术参数 Main Technical Parameters

型号 Model	丝径范围 Filament Dia.	电机功率 Main Motor	生产能力 Production capacity	装机功率 Installed Power
LS-SJ65	0.06-0.12mm	18.5KW	30-50kg/h	110KW
LS-SJ70	0.06-0.12mm	22KW	60-80kg/h	120KW
LS-SJ80	0.06-0.12mm	30KW	80-100kg/h	130KW



## PBT Cosmetic Brush Filament Production Machine Line

### 化妆刷丝拉丝机



### 简要描述 Brief introduction

原料为PBT粒料。

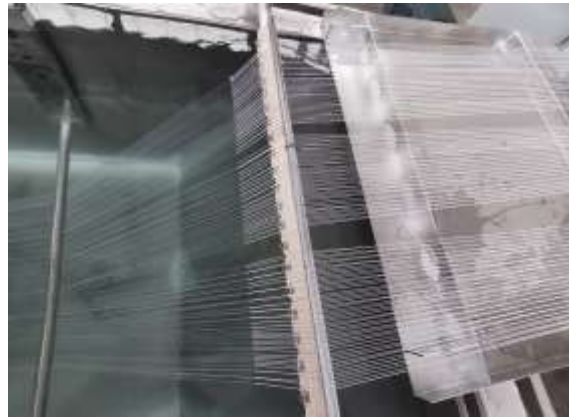
本生产线主要用于生产 PBT 化妆刷丝，牙刷丝等。

Raw material is PBT pellets.

This production line is mainly used for producing PBT brush bristle, cosmetic brush filament, toothbrush filament etc.

### 主要技术参数 Main Technical Parameters

型号 Model	丝径范围 Filament Dia.	电机功率 Main Motor	生产能力 Production capacity	装机功率 Installed Power
LS-SJ65	0.05mm-0.12mm	18.5KW	30-40kg/h	160KW
LS-SJ70	0.05mm-0.12mm	22KW	40-50kg/h	180KW
LS-SJ80	0.05mm-0.12mm	30KW	60-70kg/h	190KW



# Paint Brush Filament Production Machine Line

## 油漆刷丝拉丝机



### 简要描述Brief introduction

原料为 PET/PBT。

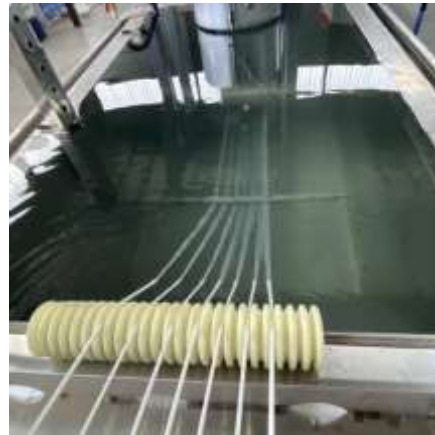
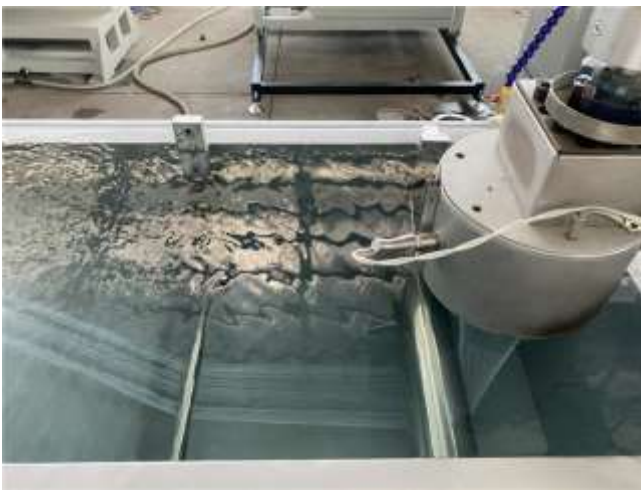
本生产线主要用于塑料油漆刷丝的生产。

Raw material is PET/PBT virgin or recycled material.

This production line is mainly used to produce plastic filament for paint brush bristles.

### 主要技术参数Main Technical Parameters

型号 Model	丝径范围 Filament Dia.	电机功率 Main Motor	生产能力 Production capacity	装机功率 Installed Power
LS-SJ65	0.06mm-0.3mm	18.5KW	90-100kg/h	110KW
LS-SJ70	0.06mm-0.3mm	22KW	100-125kg/h	120KW
LS-SJ80	0.06mm-0.3mm	30KW	160-180kg/h	130KW



# Synthetic Eyelash Filament Production Machine Line

## 假睫毛丝拉丝机



### 简要描述Brief introduction

原料为 PBT/PET 粒料.

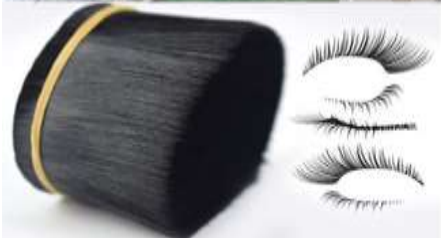
本生产线主要用于生产 PBT/PET 假睫毛毛丝。

Raw material is PBT/PET virgin material.

This production line is mainly used for producing PBT/PET synthetic eyelash filament.

### 主要技术参数Main Technical Parameters

型号 Model	丝径范围 Filament Dia.	电机功率 Main Motor	生产能力 Production capacity	装机功率 Installed Power
LS-SJ55	0.05mm-0.10mm	15KW	25-30kg/h	220KW
LS-SJ65	0.05mm-0.10mm	18.5KW	30-40kg/h	230KW
LS-SJ70	0.05mm-0.10mm	22KW	40-50 kg/h	240KW





# Toothbrush Filament Production Machine Line

## 牙刷丝拉丝机



### 简要描述 Brief introduction

原料为 PBT 粒料.

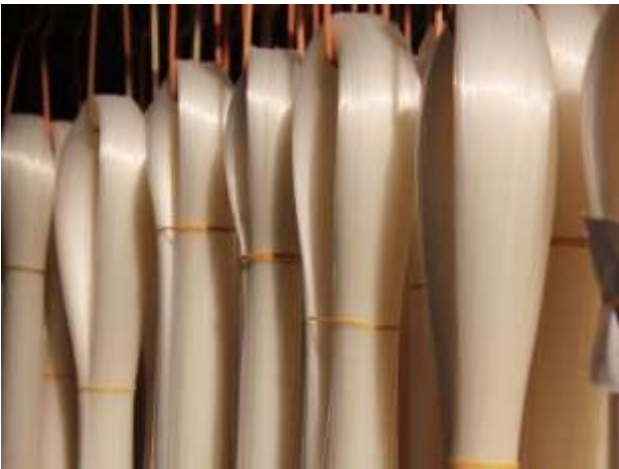
本生产线主要用于生产 PBT, PA, PP 牙刷丝等。

Raw material is PBT pellets.

This production line is mainly used for producing PBT,PA,PP toothbrush filament etc.

### 主要技术参数 Main Technical Parameters

型号 Model	丝径范围 Filament Dia.	电机功率 Main Motor	生产能力 Production capacity	装机功率 Installed Power
LS-SJ65	0.05mm-0.08mm	18.5KW	40-50kg/h	160KW
LS-SJ70	0.05mm-0.08mm	22KW	60-70 kg/h	180KW
LS-SJ80	0.05mm-0.08mm	30KW	80-90kg/h	190KW



# Nylon Fishing Line Fishing Net/Safety Net Filament Production Line

## PA 尼龙鱼线/渔网/安全网丝拉丝机



### 简要描述 Brief introduction

原料为 尼龙颗粒, PET 瓶片/颗粒, PE 颗粒。

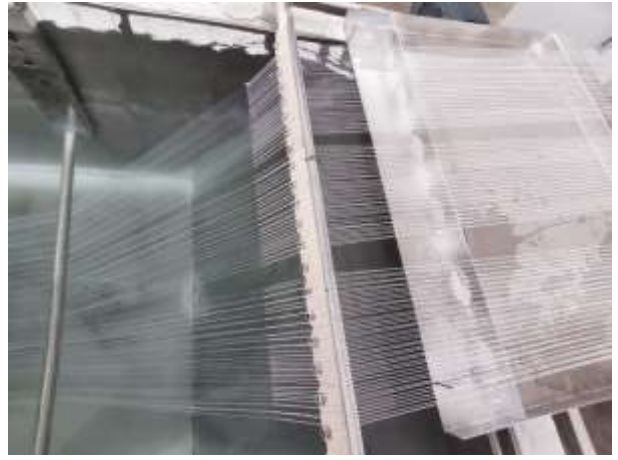
本生产线主要用于生产鱼线、渔网丝、安全网丝等。

Raw materials is Nylon pellets, PET flakes, PET/PE pellets.

This production line is mainly used for producing fishing line, fishing net filament, safety net filament etc.

### 主要技术参数 The main Technical Parameters

型号 Model	丝径范围 Filament Dia.	电机功率 Main Motor	生产能力 Production capacity	装机功率 Installed Power
LS-SJ75	0.06mm-0.4mm	22KW	50-85kg/h	80KW
LS-SJ80	0.06mm-0.4mm	30KW	70-120 kg/h	90KW
LS-SJ90	0.06mm-0.4mm	37KW	85-150 kg/h	100KW



## Company Profile





Qingdao Zhuoya Machinery Co., Ltd. is the science and technology knowledge-intensive corporation integrated with research and development, fabrication, sales and service, professionally engaged in the manufacture of plastics processing complete equipment especially plastic filament production line equipment. We are expert in manufacturing plastic broom&brush filament extruding machine line, plastic rope filament extruding machine line, plastic synthetic hair filament extruding machine line, plastic synthetic false eyelash filament extruding machine line, plastic safety net filament extruding machine line, plastic Nylon filament extruding machine line, plastic wire extruding machine line.

Since its establishment in 2002, Zhuoya has been the leader of plastic filament extrusion machine area in China with continuous hardworking, reform and innovation. We have owned a powerful team combining management, technology, research and sales. We have been awarded to "Good Contract & Good faith Unit" , "Hi-tech Enterprise", and " High-Integrity Enterprise" etc.

Qingdao Zhuoya always obeys the principle of "credit is the basis, quality is the life, innovation is the pursue , service is the main " , keeps the quality promise for customers, focuses on introducing and cultivating talent, cooperates with many science and research institutes. We have strong technology power and perfect testing means, integrates advanced technology advantages and rigid equipments and has introduced many technologists with working experience in research and development and fabrication of plastics filament extruding machine line, and understanding and experience accumulation in plastics process and plastics machinery design matching. All of these have ensured high quality and excellent performance of our fabrication of plastics filament machinery equipments.

Our plastic filament extruding machine lines are supplied to both domestic and overseas market with good reputation. We export machines to Russia, Romania, Uganda, Nigeria, Tunis, Kazakhstan, Iran, Kuwait, India, Pakistan, Ethiopia, Tanzania, Mongolia, Indonesia, Vietnam, Myanmar and other countries. We sincerely welcome your visit and will offer our warm-hearted and service and win-win cooperation with the best product.

The broom and brush filament machine is all round African market, Russian market and Chinese market including Henan, Hebei, Guangzhou, Zhejiang and Jiangsu province. PBT brush filament machine and Nylon brush filament machine are widely used by customers from Henan, Anhui, Jiangsu, Tianjin, Guangzhou, Shenzhen etc.

Synthetic hair filament machine keeps a large share of African market to 90% and also have domestic customers in Xuchang and Qingdao. Till now our machine have been exported to more than thirty countries in the world like Russia, Southeast Asia, Middle East and Many African countries and have a very good reputation.

# 合作伙伴

Partner









## 科技 · 缔造完美品质



地址：山东青岛胶州市胶西工业园  
电话：0532-85208877  
手机：15166052256

Address: Jiaoxi Industrial Park, Jiaozhou, Qingdao city, China  
Tel: +86-532-85208877  
MP/Whatsapp: +8615166052256 (Ms.Doreen)  
Web: [www.filamentmachinery.com](http://www.filamentmachinery.com)  
Email: [doreen.cao@zyamachine.com](mailto:doreen.cao@zyamachine.com)

