



# Colku Parking Air Conditioner



## Colku Electrical Appliance Ltd.

Tel: +86 757 87363068      Email: info@colku.com      Fax: +86 757 87363067

WeChat: +86 18028121075      WhatsApp: +852 95188163      Web: www.colku.com

Add: No.84 Area B, Leping Industry Park, Sanshui Dist, Foshan City  
Guangdong Province, China 528137

# COMPANY PROFILE



Colku Electrical Appliance Ltd. was founded in 1989. With the 50000m<sup>2</sup> workshop and 4 automatic assembly lines, we have the production capacity of 2000 units per day. During the past 37 years, Colku has become a top OEM/ODM manufacturer of truck air conditioner and portable refrigerator.

We offer the service from product design, structure build up, molding producing, first sample making, certificates applying to final production. Our factory covers processes including plastic injection, plastic absorber forming, metal lazer cutting, punching, bending, logo printing, foaming injection, compressor producing and final assembling.

Colku pays high attention to Quality Control System, and implemented the ISO 9001 and IATF 16949 Systems. With our MES control system, we have strict control on each step from incoming materials, semi-products processing, foaming, assembling, electrical testing, leakage detecting, final checking, sampling and ex warehouse.

## CERTIFICATION



IATF16949

ISO9001

ISO14001

ISO45001

ISO10012

**60<sup>+</sup>** Cooperate  
Leading Brands

**20<sup>+</sup>** Exporting  
Countries

**1 Million+** Units  
Global Sales

# Contents

For Heavy Duty Truck

D26 | D40 | V28 | RS33 | EH26 | EH26X | HT23 | HT28

01-06

For Medium Truck

MT26 | MT26A

07-08

Split-type Back/Rooftop Mounted

CB26 | CB26A | CB26H | CT26

09-12

Air Conditioning Installation Steps

DC Rooftop Air Conditioner | Split-type DC Air Conditioner

13-14

Air Conditioning Installation Effect

Special Mounting Kit For Special Model | Installation Effect

15-16



For Heavy Duty Truck

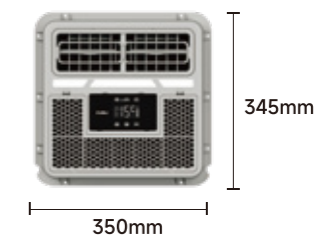
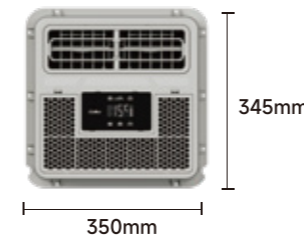
# DC Dual Fan Rooftop Air Conditioner

D26 | D40

- Dual Cooling Fan System  
-Upgraded heat dissipation
- Twin-rotor Compressor  
-Fast cooling
- Three Brushless Fan Motors  
-Low noise and high efficiency
- Auto Swing Function
- Smart APP Control
- LED Ambient Light  
-Special for D40



## DC Rooftop Air Conditioner



Product Parameters	D26	D40
Cooling Capacity	2500W	2700W
COP	3.6	3.6
Input Voltage	DC 24V	DC 24V
Refrigerant	R134a/530g	R410a/540g
Working Temperature	16~55°C	16~55°C
Current	8-35A (35°C ambient temp)	8-37A (35°C ambient temp)
Evaporator Air Volume	450m <sup>3</sup> /h	450m <sup>3</sup> /h
Setting Temperature	15~30°C	15~30°C
Weight	32.3kg/net,38.2kg/gross	32.8kg/net,38.7kg/gross
Weight (Mounting Kit)	4.5kg/gross	4.5kg/gross

Product Size	D26	D40
Air Distributor Size	350mm*345mm*140mm	350mm*345mm*140mm
Outer Body Size	928mm*872mm*203mm	928mm*872mm*203mm
Package Size	1010mm*960mm*400mm	1010mm*960mm*400mm
Package Size(Mounting Kit)	1020mm*680mm*85mm	1020mm*680mm*85mm
Loading QTY	60sets/20GP 120sets/40GP 144sets/40HQ	60sets/20GP 120sets/40GP 144sets/40HQ

For Heavy Duty Truck

# DC Rooftop Air Conditioner

V28 | RS33 | EH26 | EH26X | HT23 | HT28



## DC Rooftop Air Conditioner

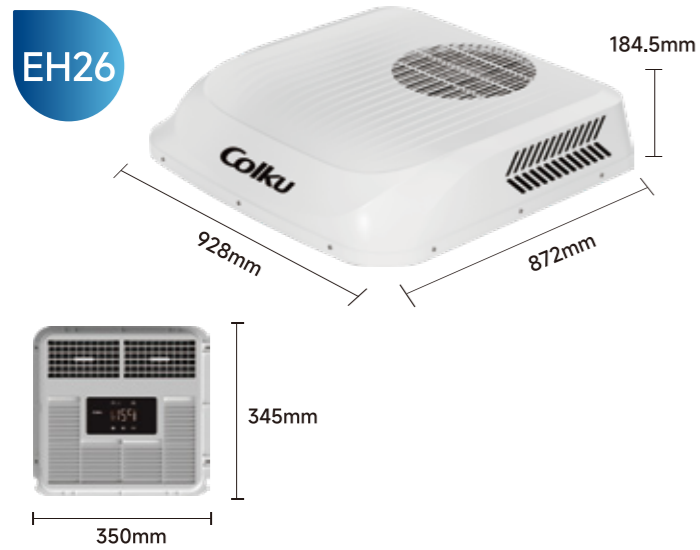


- \* Twin-rotor Compressor, fast cooling
- \* Dual Brushless Fan Motors, low noise and high efficiency
- \* Auto Swing Function
- \* Smart APP Control
- \* Sleep Mode, Lower current, more energy-saving

- \* Twin-rotor Compressor, fast cooling
- \* Dual Brushless Fan, low noise and high efficiency
- \* Upgrade 3 Adjustable Air Outlet
- \* Smart APP Control

Product Parameters	V28	RS33
Cooling Capacity	2600W	2700W
COP	3.6	3.6
Input Voltage	DC 24V	DC 24V
Refrigerant	R410a/510g	R410a/460g
Working Temperature	16~55°C	16~55°C
Current	8~35A (35°C ambient temp)	8~38A (35°C ambient temp)
Evaporator Air Volume	450m <sup>3</sup> /h	450m <sup>3</sup> /h
Setting Temperature	15~30°C	15~30°C
Weight	31.5kg/net,37.2kg/gross	34kg/net,42kg/gross
Weight (Mounting Kit)	4.5kg/gross	5kg/gross

Product Size	V28	RS33
Air Distributor Size	350mm*345mm*143mm	513mm*345mm*140mm
Outer Body Size	928mm*872mm*188mm	890mm*905mm*210mm
Package Size	1010mm*960mm*400mm	965mm*965mm*455mm
Package Size(Mounting Kit)	1020mm*680mm*85mm	1020mm*680mm*85mm
Loading QTY	72sets/20GP 144sets/40GP 144sets/40HQ	60sets/20GP 120sets/40GP 120sets/40HQ



- \* Scroll Compressor Type
- \* Dual Brushless Fan Motors, low noise and high efficiency
- \* Smart APP Control



- \* Rotary Compressor Type
- \* Dual Brushless Fan Motors, low noise and high efficiency
- \* Auto Swing Function
- \* Smart APP Control

Product Parameters	EH26	EH26X
Cooling Capacity	2100W	2400W
COP	2.5	3.2
Input Voltage	DC 24V	DC 24V
Refrigerant	R134a/310g	R134a/500g
Working Temperature	16~55°C	16~55°C
Current	15~37A (35°C ambient temp)	15~37A (35°C ambient temp)
Evaporator Air Volume	380m <sup>3</sup> /h	400m <sup>3</sup> /h
Setting Temperature	15~30°C	15~30°C
Weight	26.5kg/net,33kg/gross	30kg/net,33.3kg/gross
Weight (Mounting Kit)	4.5kg/gross	4.5kg/gross

**Product Size**

Air Distributor Size	350mm*345mm*143mm	350mm*345mm*143mm
Outer Body Size	928mm*872mm*184.5mm	928mm*872mm*184.5mm
Package Size	1010mm*960mm*400mm	1010mm*960mm*400mm
Package Size(Mounting Kit)	1020mm*680mm*85mm	1020mm*680mm*85mm
Loading QTY	60sets/20GP 120sets/40GP 144sets/40HQ	60sets/20GP 120sets/40GP 144sets/40HQ



- \* Powered twin rotary compressor,high efficiency
- \* Brushless Fan Motors, quiet and durable
- \* Smart APP Control

Product Parameters	HT23	HT28
Cooling Capacity	2300W	2600W
COP	3.1	3.25
Input Voltage	DC 24V	DC 24V
Refrigerant	R410a/450g	R410a/430g
Working Temperature	16~55°C	16~55°C
Current	8~37A (35°C ambient temp)	8~40A (35°C ambient temp)
Evaporator Air Volume	400m <sup>3</sup> /h	400m <sup>3</sup> /h
Setting Temperature	15~30°C	15~30°C
Weight	30kg/net,38kg/gross	31kg/net,39kg/gross
Weight (Mounting Kit)	4.5/gross	4.5kg/gross

**Product Size**

Air Distributor Size	350mm*345mm*140mm	350mm*345mm*140mm
Outer Body Size	928mm*872mm*188mm	928mm*872mm*188mm
Package Size	1010mm*960mm*380mm	1010mm*960mm*380mm
Package Size(Mounting Kit)	1020mm*680mm*85mm	1020mm*680mm*85mm
Loading QTY	64sets/20GP 130sets/40GP 144sets/40HQ	64sets/20GP 130sets/40GP 144sets/40HQ

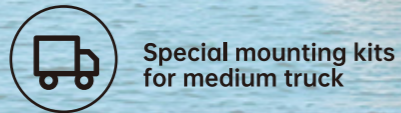
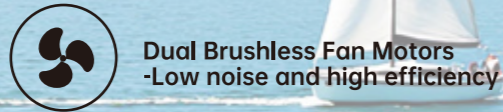
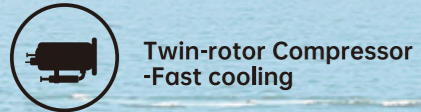


- \* Twin-rotor Compressor, fast cooling
- \* Brushless Fan Motors, quiet and durable
- \* Auto Swing Function
- \* Smart APP Control

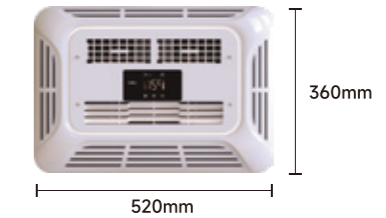
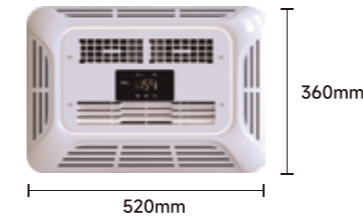
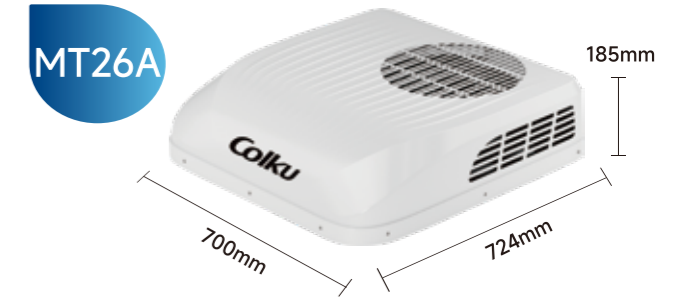
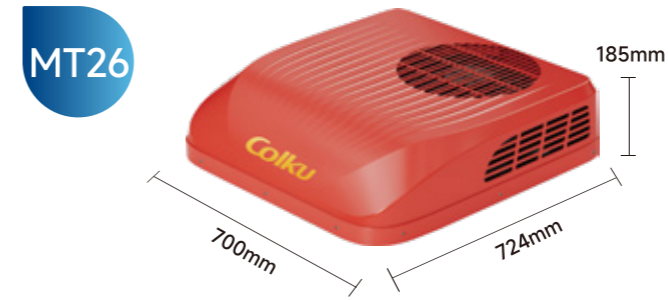
For Medium Truck

# DC Rooftop Air Conditioner

MT26 | MT26A



## DC Rooftop Air Conditioner



Product Parameters	MT26	MT26A
Cooling Capacity	2000W	1700W
COP	3.1	2.8
Input Voltage	DC 24V	DC 12V
Refrigerant	R410a/330g	R410a/350g
Working Temperature	16~55°C	16~55°C
Current	8-32A (35°C ambient temp)	15-50A (35°C ambient temp)
Evaporator Air Volume	350m <sup>3</sup> /h	350m <sup>3</sup> /h
Setting Temperature	15~30°C	15~30°C
Weight	23kg/net,28kg/gross	23kg/net,28kg/gross
Weight (Mounting Kit)	4kg/gross	4kg/gross
<b>Product Size</b>		
Air Distributor Size (with mounting cover)	520mm*360mm*37mm	520mm*360mm*37mm
Outer Body Size	700mm*724mm*185mm	700mm*724mm*185mm
Package Size	807mm*780mm*370mm	807mm*780mm*370mm
Package Size(Mounting Kit)	800mm*680mm*85mm	800mm*680mm*85mm
Loading QTY	84sets/20GP 180sets/40GP 210sets/40HQ	84sets/20GP 180sets/40GP 210sets/40HQ

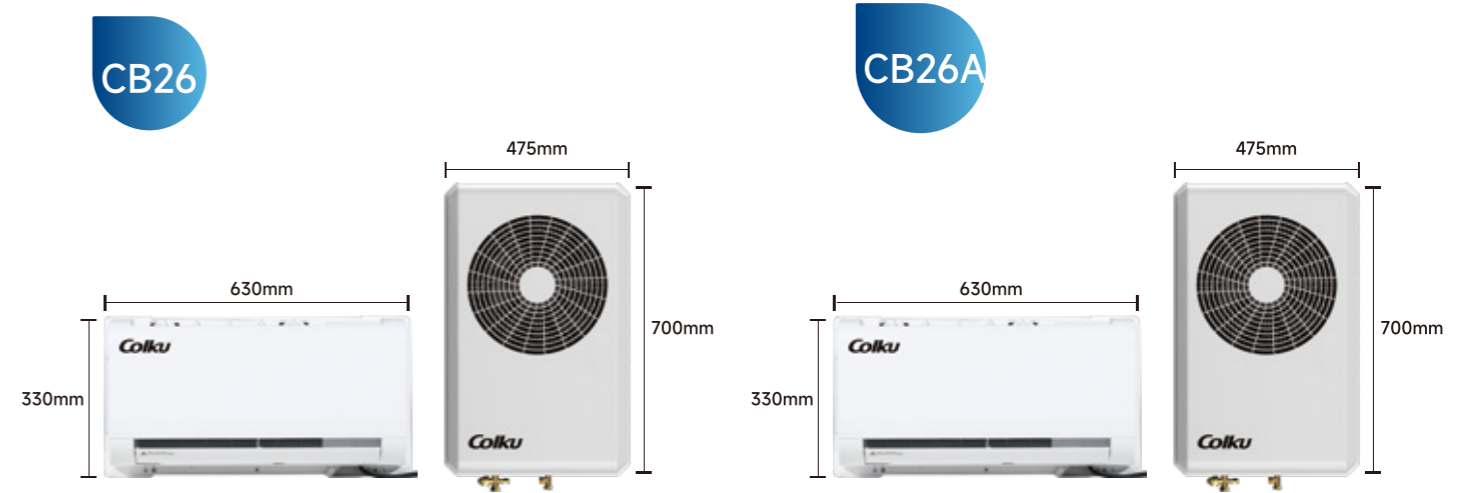
## Split-type Back/Rooftop Mounted

# DC Air Conditioner

CB26 | CB26A



## Split-type Back/Rooftop Mounted DC Air Conditioner



- \* Special for 24V Truck
- \* AC unit, vertically mounted
- \* Smart APP Control

- \* Special for 12V Truck
- \* AC unit, vertically mounted
- \* Smart APP Control

Product Parameters	CB26	CB26A
Cooling Capacity	2000W	2000W
COP	3.0	2.8
Input Voltage	DC 24V	DC 12V
Refrigerant	R134a/370g	R410a/370g
Working Temperature	16~43°C	16~43°C
Current	35A (35°C ambient temp)	50A (35°C ambient temp)
Evaporator Air Volume	450m <sup>3</sup> /h	450m <sup>3</sup> /h
Setting Temperature	16~30°C	16~30°C
Air Distributor Weight	7kg/net,13.5kg/gross	7kg/net,13.5kg/gross
Outer Body Weight	21kg/net,24kg/gross	21kg/net,24kg/gross
<b>Product Size</b>		
Air Distributor Size	630mm*330mm*190mm	630mm*330mm*190mm
Air Distributor Package Size	695mm*480mm*302mm	695mm*480mm*302mm
Outer Body Size	700mm*475mm*220mm	700mm*475mm*220mm
Outer Body Package Size	795mm*530mm*335mm	795mm*530mm*335mm
Loading QTY	96sets/20GP , 208sets/40GP ,214sets/40HQ	

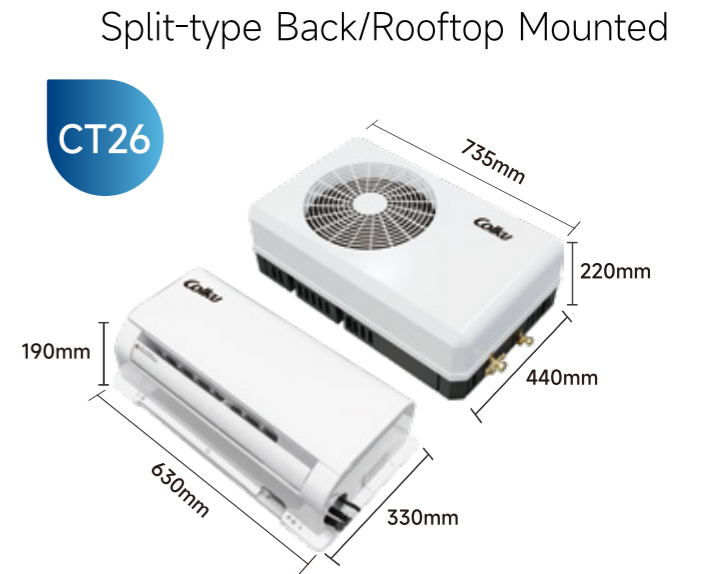
## Split-type Back/Rooftop Mounted

# DC Air Conditioner

CB26H | CT26



- \* AC unit, horizontally mounted
- \* Smart APP Control



- \* AC unit, horizontally mounted
- \* Smart APP Control

Product Parameters	CB26H	CT26
Cooling Capacity	2000W	2000W
COP	3.0	3.0
Input Voltage	DC 24V	DC 24V
Refrigerant	R134a/370g	R134a/370g
Working Temperature	16~43°C	16~43°C
Current	35A (35°C ambient temp)	35A (35°C ambient temp)
Evaporator Air Volume	450m <sup>3</sup> /h	450m <sup>3</sup> /h
Setting Temperature	16~30°C	16~30°C
Air Distributor Weight	7kg/net,13.5kg/gross	7kg/net,13.5kg/gross
Outer Body Weight	21kg/net,24kg/gross	21kg/net,24kg/gross
<b>Product Size</b>		
Air Distributor Size	630mm*330mm*190mm	630mm*330mm*190mm
Air Distributor Package Size	695mm*480mm*302mm	695mm*480mm*302mm
Outer Body Size	735mm*440mm*220mm	735mm*440mm*220mm
Outer Body Package Size	795mm*530mm*335mm	795mm*530mm*335mm
Loading QTY	96sets/20GP , 208sets/40GP, 214sets/40HQ	

# How to Install DC Rooftop Air Conditioner



## NOTE

The installation accessories may vary slightly among different truck models. Below are the installation steps using universal installation accessories.  
If the truck doesn't have a sunroof, the area for the sunroof needs to be cut before installing the air conditioner. For heavy duty truck, the minimum opening size of the sunroof is 480mm×380mm or 620mm×380mm. For medium truck, the minimum opening size of the sunroof is 380mm×210mm.



**Step01:** Remove the sunroof from the truck's roof (if there is no sunroof to remove and cutting is required).



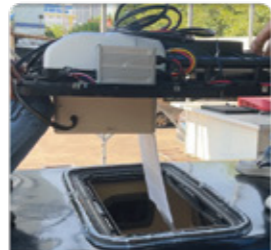
**Step02:** Clean the area around the sunroof and apply waterproof adhesive tape (if the roof surface is uneven, ensure the waterproof tape is tightly adhered without gaps).



**Step03:** Apply glass sealant on top of, around, and at the joints of both ends of the waterproof tape.



**Step04:** Install the core pull nuts on the back base plate of the air conditioner. This step can be done before steps 1, 2, and 3 (if the sunroof size is around 380\*480mm, use the universal decorative cover, and the nuts should be installed in holes No. 6 and No. 7. The specific holes to use depend on the actual sunroof size).



**Step05:** Center the air conditioner on top of the tape.



**Step06:** Use black iron rods and screws to securely fix the decorative cover.



**Step07:** Use magic tape and straps to secure the power cord along the back of the truck and route it to the battery location.



**Step08:** Connect the positive and negative terminals of the power cord to the corresponding positive and negative terminals of the battery.



**Step09:** Turn on the air conditioner for testing and let it run for 10 minutes. Operate the remote control to observe if the mode and fan speed change normally.

# How to Install Split-type DC Air Conditioner



**Step01:** Select a suitable installation location for the outer unit, mark and drill holes.



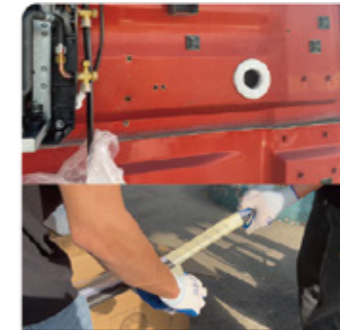
**Step02:** Install rivets in the fixing holes of the bracket.



**Step03:** Remove the upper cover of the outer unit, place it in the designated location, and use the matching screws to fix it.



**Step04:** Choose a suitable location for mounting plate, then hang the air distributor on it, and drill the screws into the corresponding holes.



**Step05:** Select a drilling location according to the installation location and pipe routing direction of the air conditioner, then use straps to wrap the internal and outer units links.



**Step06:** Choose a suitable location to separate the drain pipe separately, continue to bandage it. And then use connecting pipes to connect internal and outer units.



**Step07:** Extend the power cord out of the hole and wrap the exposed part of the pipe with a sponge.



**Step08:** Connect the power cord to the outer unit and secure it with a tie, and vacuum for 30 minutes.



**Step09:** Turn on the air conditioner to test the operating effect. If there is no problem, reinstall the upper cover of the outer unit.

# Special Mounting Kit For Special Model

## Installation Effect



Mercedes-Benz



Man



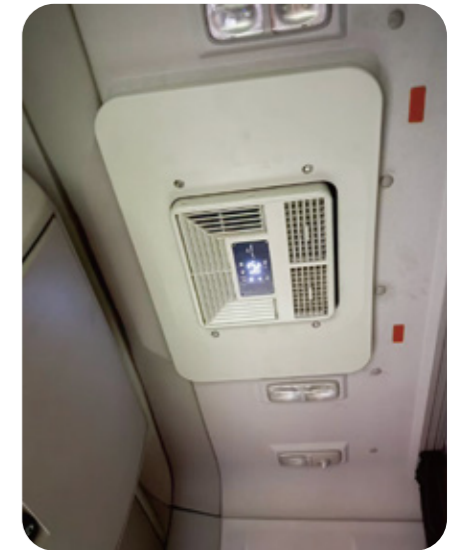
Scania



①



②



③



IVECO



Volvo



Hyundai



④



⑤



⑥