



20 Years Of Professional Factory-strength Supply

Product Catalogue



Tianjin Zhong Qi Growth Technology Co., Ltd.
Whatsapp: +86 16622223090

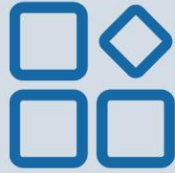
Basic Safety Shoe Features

Anti-smash and anti-puncture


Oil-resistant and slip-resistant

Anti-cold anti-static


High temperature resistance insulation 6KV




10,000 pairs
Daily output



200,000 pairs
Standing stock

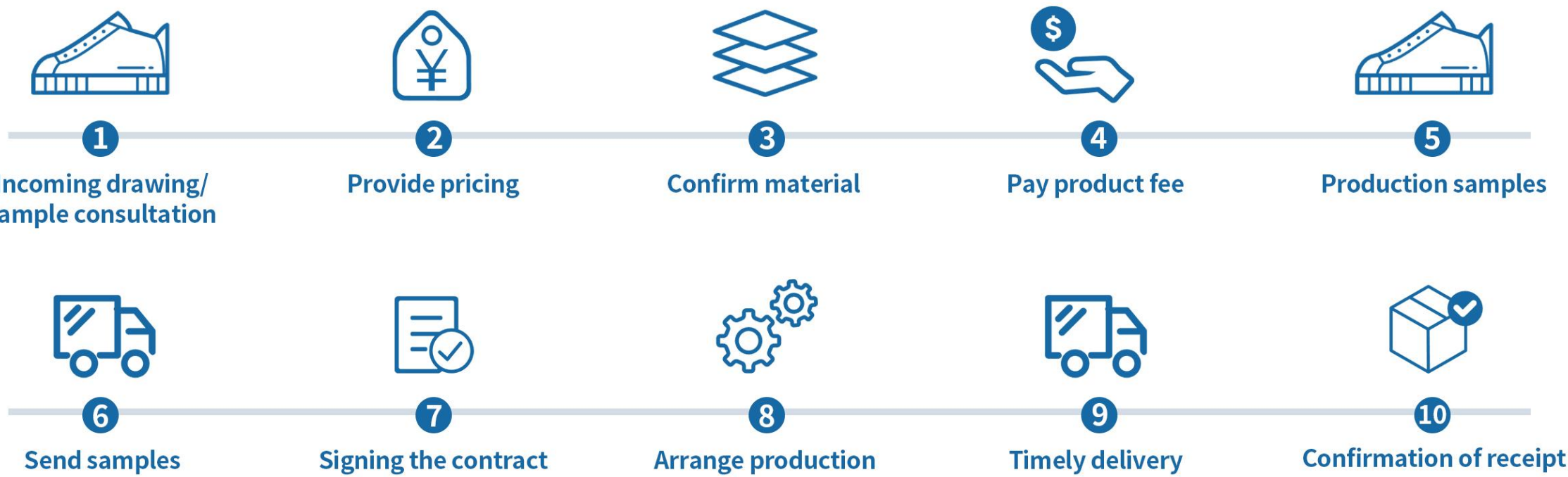


15
Production lines



10,000
square meters
Warehousing area

OEM/ODME Customization Process



Product Catalog

Anti-smash Anti-puncture 001-018



Anti-smash Antii-puncture Antii-static 019-023



Anti-smash Antii-puncture Insulated 024-030



Anti-smash Anti-puncture High temperature resistance 031-033



Anti-smash Anti-puncture Breathable 034-036

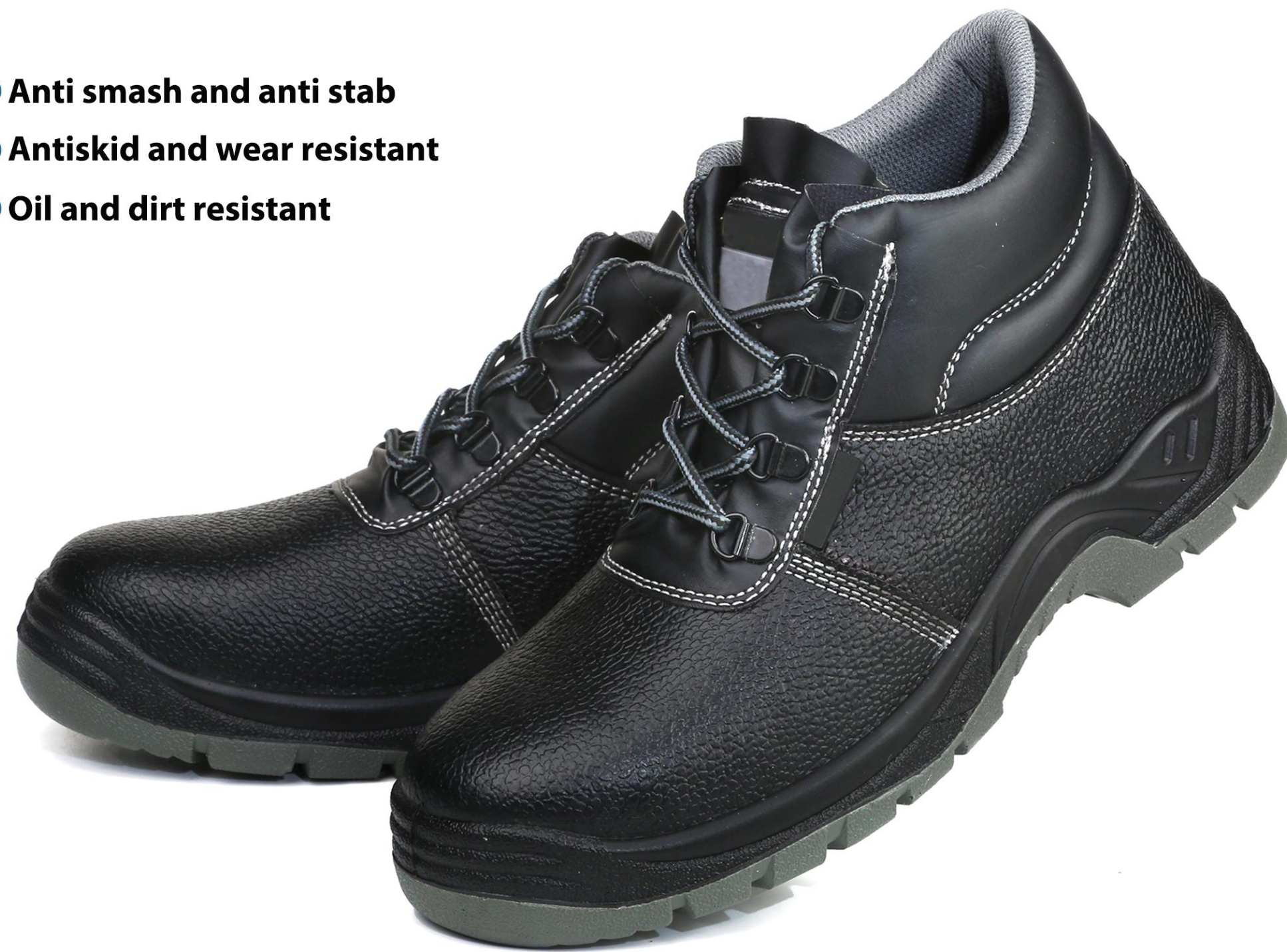


Size Chart											
EUR	36	37	38	39	40	41	42	43	44	45	46
US	4.5	5	5.5	6	7	8	9	10	11	12	13
UK	5	5.5	6	6.5	7	7.5	8	9	9.5	10.5	11
CN Size	35	36	37	38-39	40	41	42	43-44	45	46-47	48
mm	225	230	235	240	250	255	260	270	275	285	290

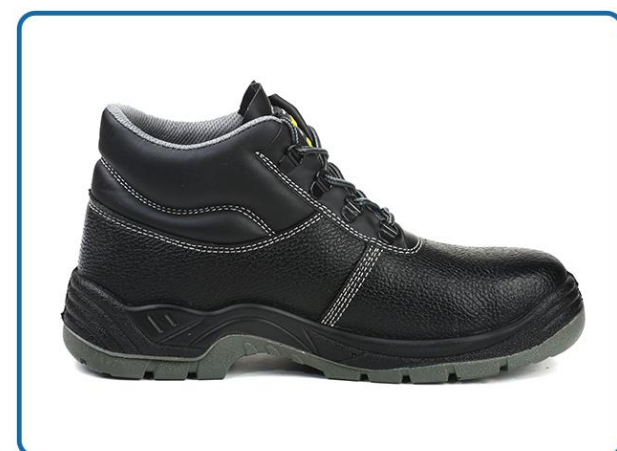
Anti-smash Anti-puncture



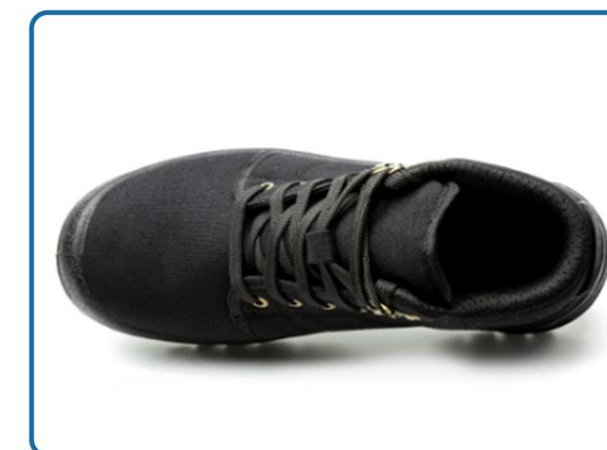
- ① Anti smash and anti stab
- ② Antiskid and wear resistant
- ③ Oil and dirt resistant



- ① Folding endurance
- ② Ventilation
- ③ Wear-resisting
- ④ Non-slip



MULTIPLE PROTECTION



ANATOMICAL DRAWING MULTIFUNCTIONAL PROTECTION





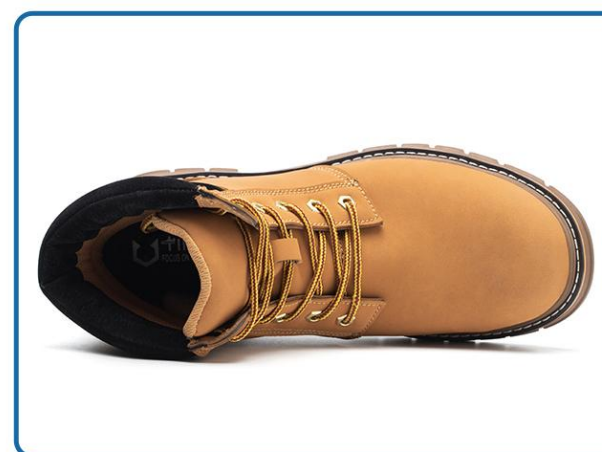
- ① Thickened iron head
- ② Thickened iron sole
- ③ High cost performance



- ① Standard steel toe
- ② Kevlar midsole
- ③ Anti-smash ,anti-stab



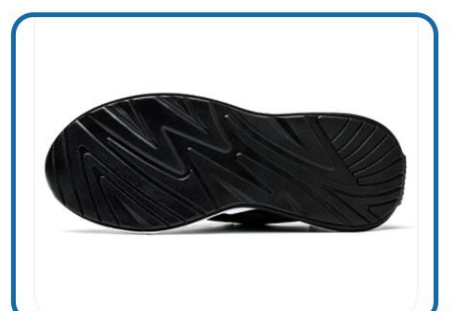
- ① Insulated 6kv
- ② Stab resistant Kevlar midsole
- ③ Rib outsole anti-skid pattern design



LIGHTWEIGHT AND COMFORTABLE

Built-in Kevlar puncture resistant midsole+lightweight shoes, lightweight and comfortable on the body and feet

- ① Anti smashing and anti stabbing
- ② Rotating shoe buckle
- ③ Breathable and comfortable





OPEN AT A GLANCE

TIGHT IN ONE SPIN

- ① Anti smashing and anti piercing
- ② Double layer rubber bottom



ELASTIC COMFORT

WEAR RESISTANCE
AND SLIP RESISTANCE



- ① Breathable mesh, cutout sides
- ② Double Velcro design
- ③ Double layer solid bottom
- ④ Pressure resistant to 15000N





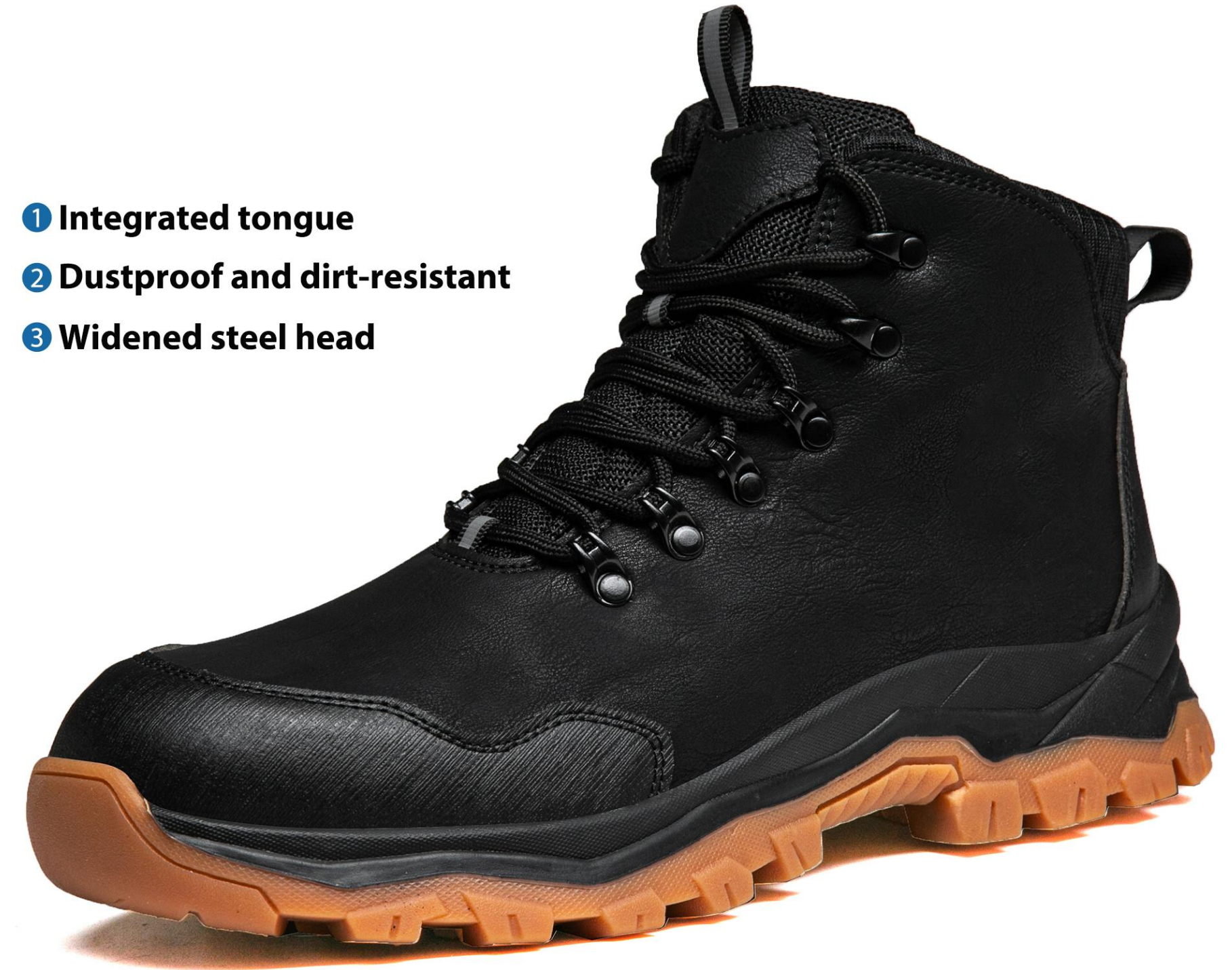
- ① Flyknit+TPU upper for breathable
- ② Widened anti impact steel toe cap
- ③ Kevlar midsole
- ④ Wear-resistant and chip-resistant

- ① More comfortable than bare feet
- ② Air-cushioned heel
- ③ EVA lightweight bottom, acid and alkali resistant
- ④ Fluorescent strip design, safer at night

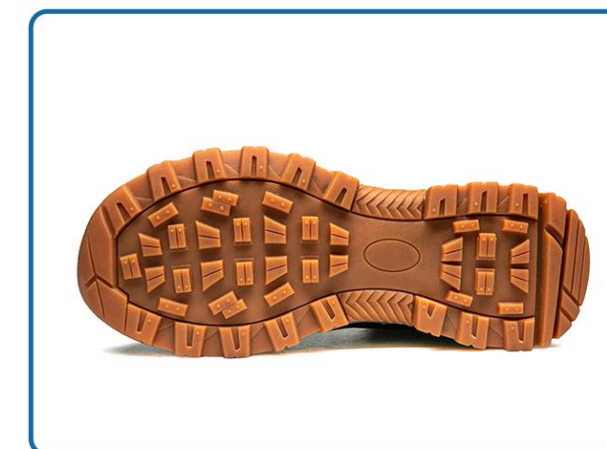




- ① Integrated tongue
- ② Dustproof and dirt-resistant
- ③ Widened steel head



- ① Anti smash and stab
- ② Bteathable and comfortable
- ③ Anti slip and wear resistant
- ④ Light and soft



- ① High elastic cushioning
- ② Lightweight shoe body
- ③ Reflective design



- ① Superfiber leather+breathable mesh splicing
- ② Uppersoft and breathable without stuffy footwear
- ③ Resistant and durable, perfect for work and leisure



A SINGLE SHOE ONLY WEIGHS

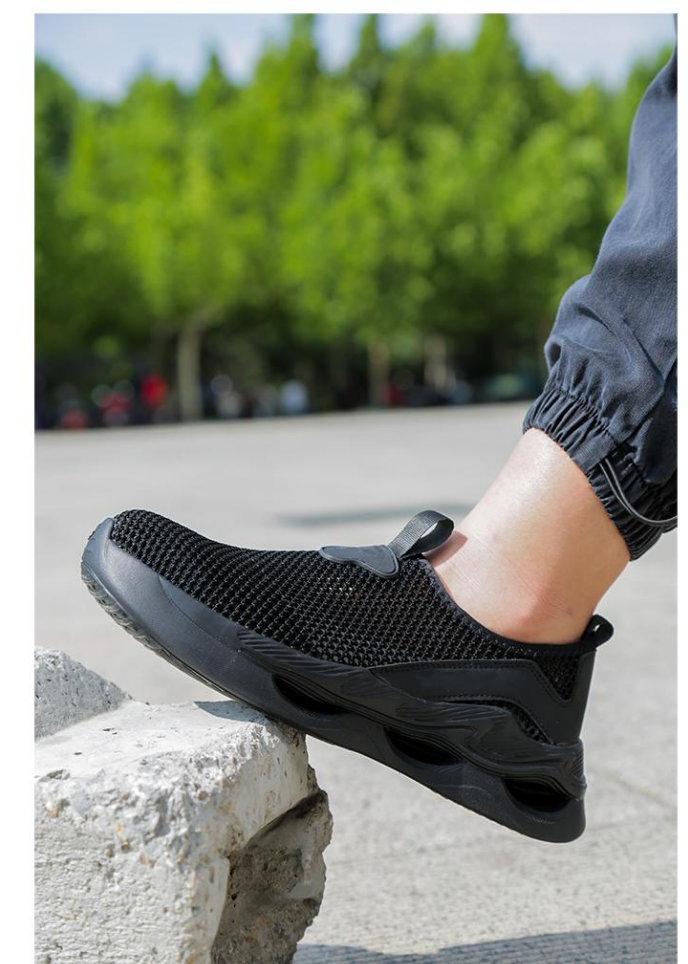
469G



- ① Lightweight and soft
- ② Anti slip and wear-resistant
- ③ Rotating button technology
- ④ Impact resistance $\geq 200J$



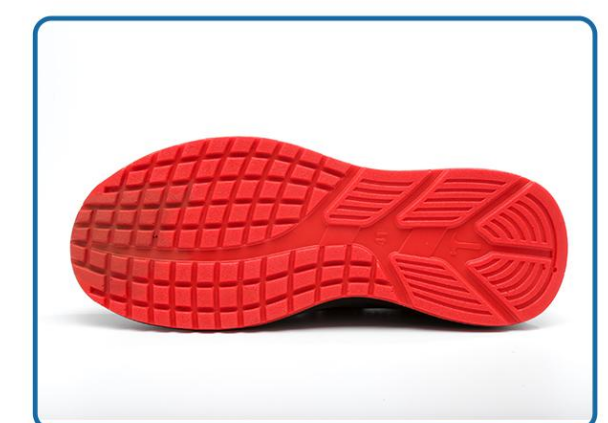
- ① Summer job of choice
- ② Ultra light and more breathable
- ③ Suitable for industrial parks, laboratories, logistics, etc.



- ① Anti-smash steel toe cap + anti-puncture steel bottom plate
- ② Honeycomb mesh inside
- ③ Canvas waist design more durable than PU leather waist



- ① Springback
- ② Hydrophobic grip and anti slip
- ③ Bteathable fly woven solid PU injection sole



Anti-smash Antii-puncture Antii-static



- ① Durable to dirt and easy to maintain
- ② Meet the anti-static requirements of different
- ③ Industries and operations
- ④ Reverse velvet cowhide+mesh fabric



- ① Anti Slip And Wear-Resistant
- ② Anti Slip And Wear-Resistant
- ③ PU Solid Bottom

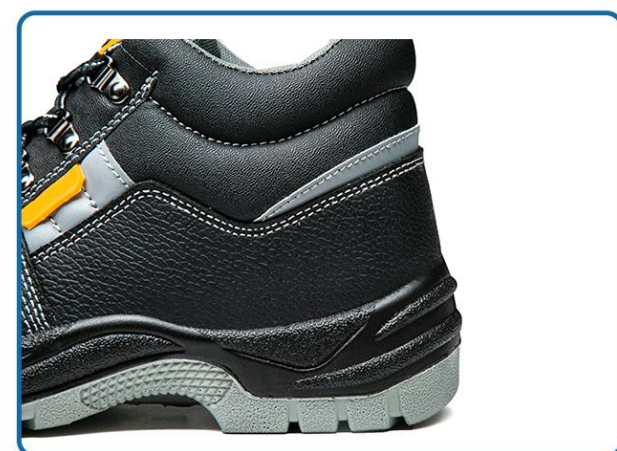
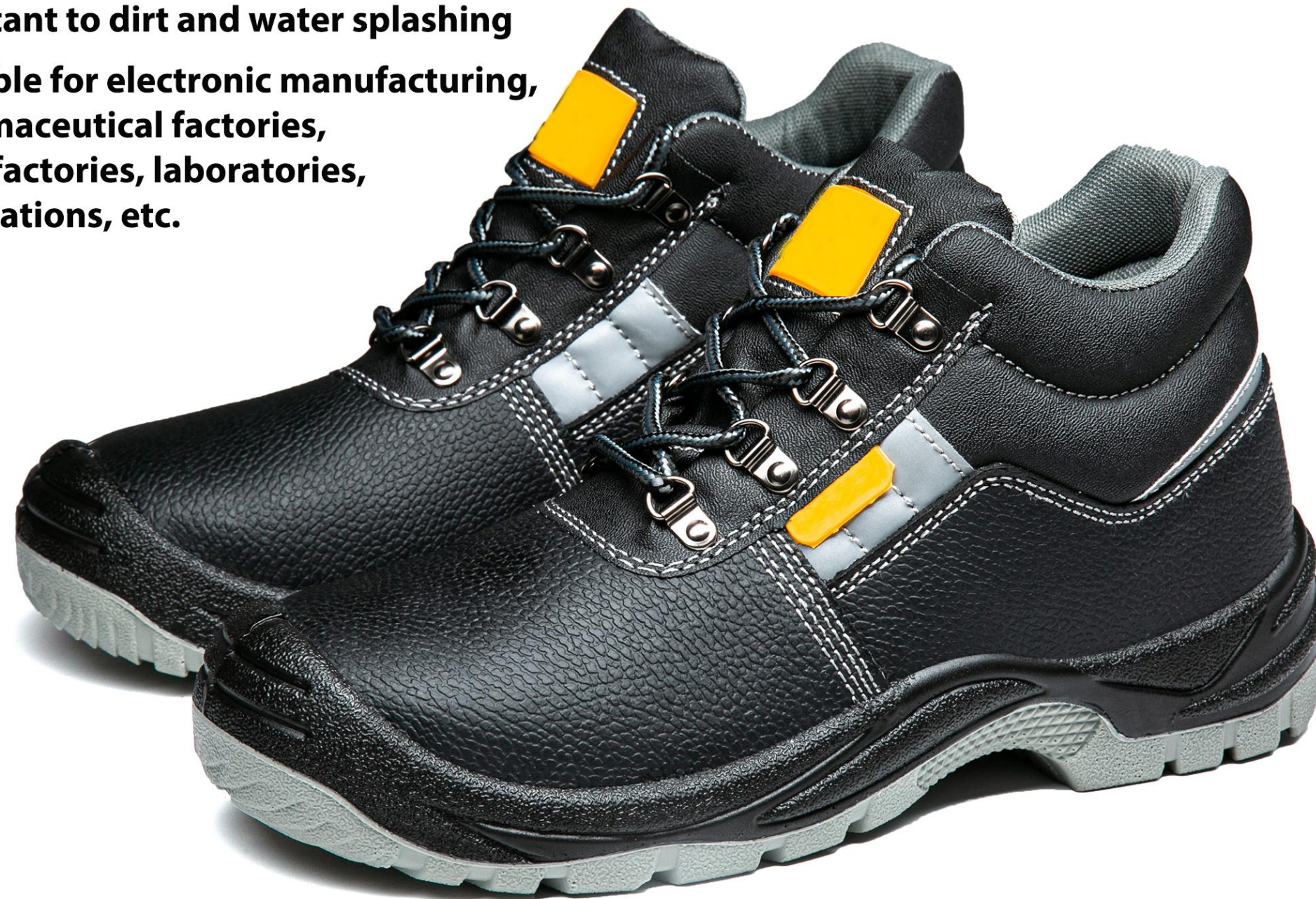


STRUCTURAL ANALYSIS

STRONG AND RESILIENT
QUALITY, CRAFTSMANSHIP, AND CRAFTSMANSHIP



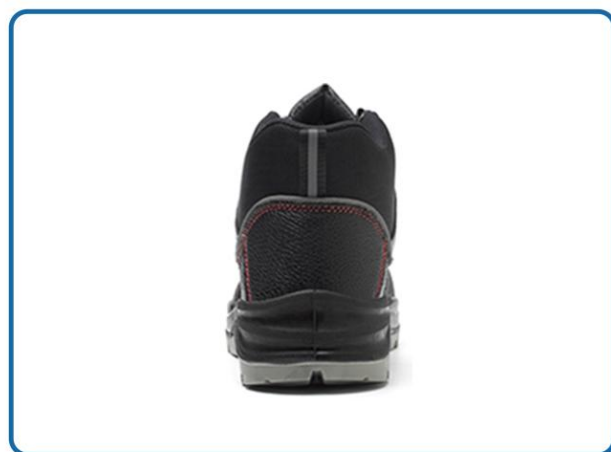
- ① Resistant to dirt and water splashing
- ② Suitable for electronic manufacturing, pharmaceutical factories, food factories, laboratories, gas stations, etc.



- ① Anti-smash, Anti-stab, Anti-Static
- ② Solid Outsole | Anti-Slip
- ③ Wear-Resistant And Spark-Resistant



- ① Integrated tongue design
- ② Proof hot resistant not afraid of mars
- ③ Leather upper is breathable, comfortable, splash



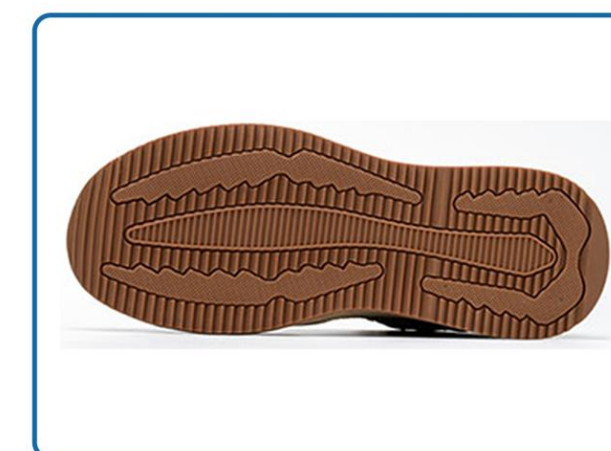
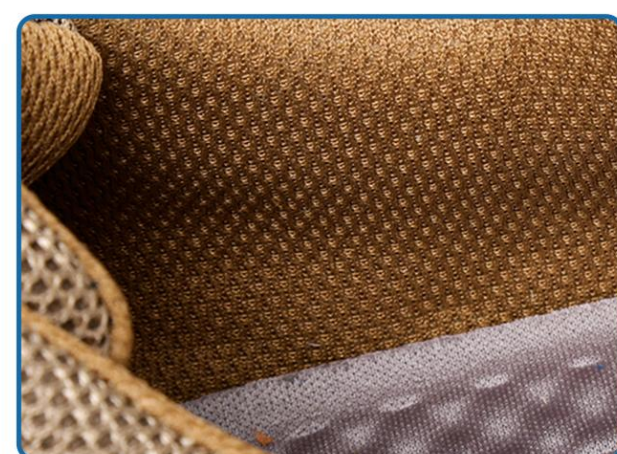
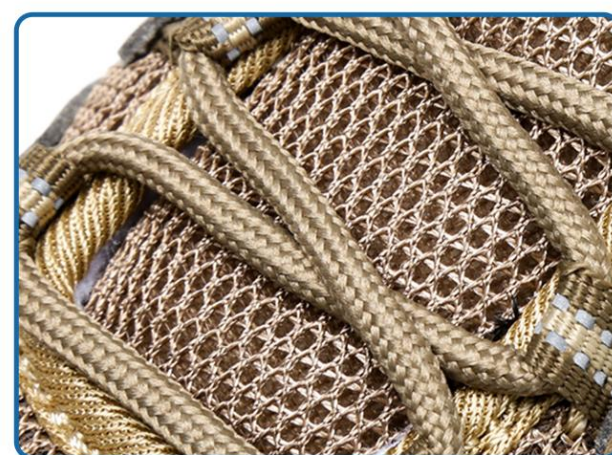
Anti-smash Antii-puncture Insulated



- ① No metal in the shoes
- ② Mesh + super fiber + cowhide
- ③ Injection molding+solid outsole
- ④ Durable bottom



- ① Breathable upper
- ② Slip-resistant and wear-resistant
- ③ Rubber outsole





- 1 Uplift**
Turnbuckle unlocking
- 2 Adjust**
The lacing can be adjusted at will
- 3 Press**
Press the buckle cover to lock
- 4 Rotate**
Turn clockwise to tighten the tie-wrap



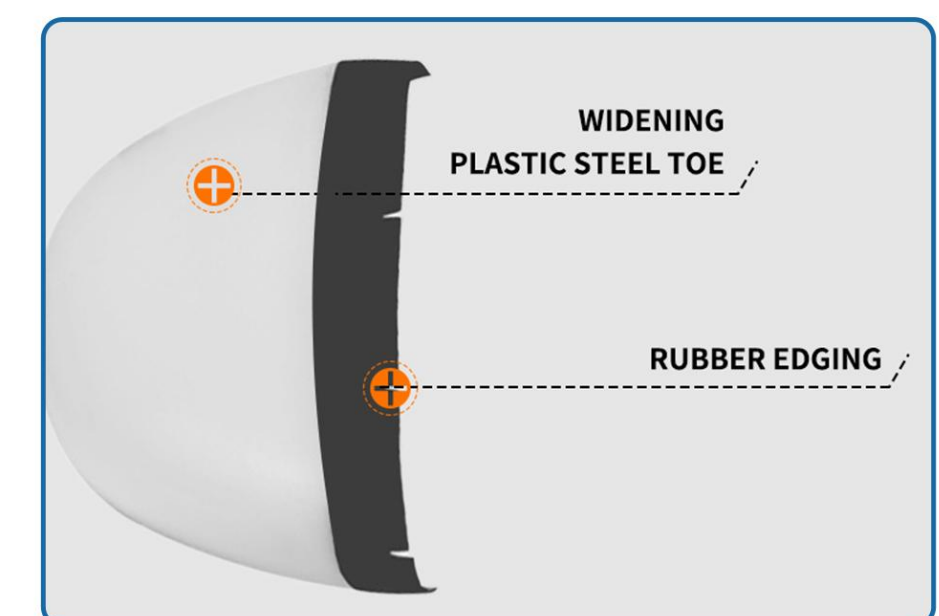
OPTION A:



OPTION B:

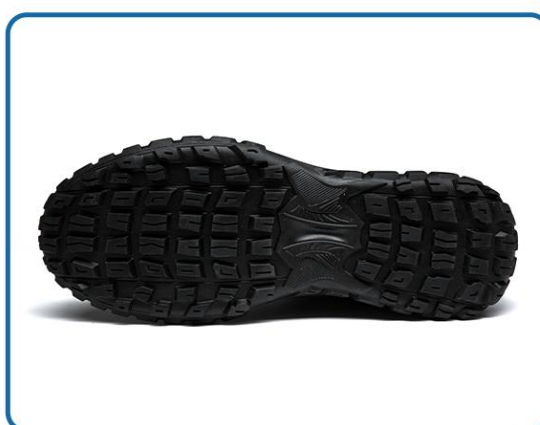


- 1 National standar dplastic steel toe**
- 2 Stab proofkevlar midsole**
- 3 Solid injection molded bottom**

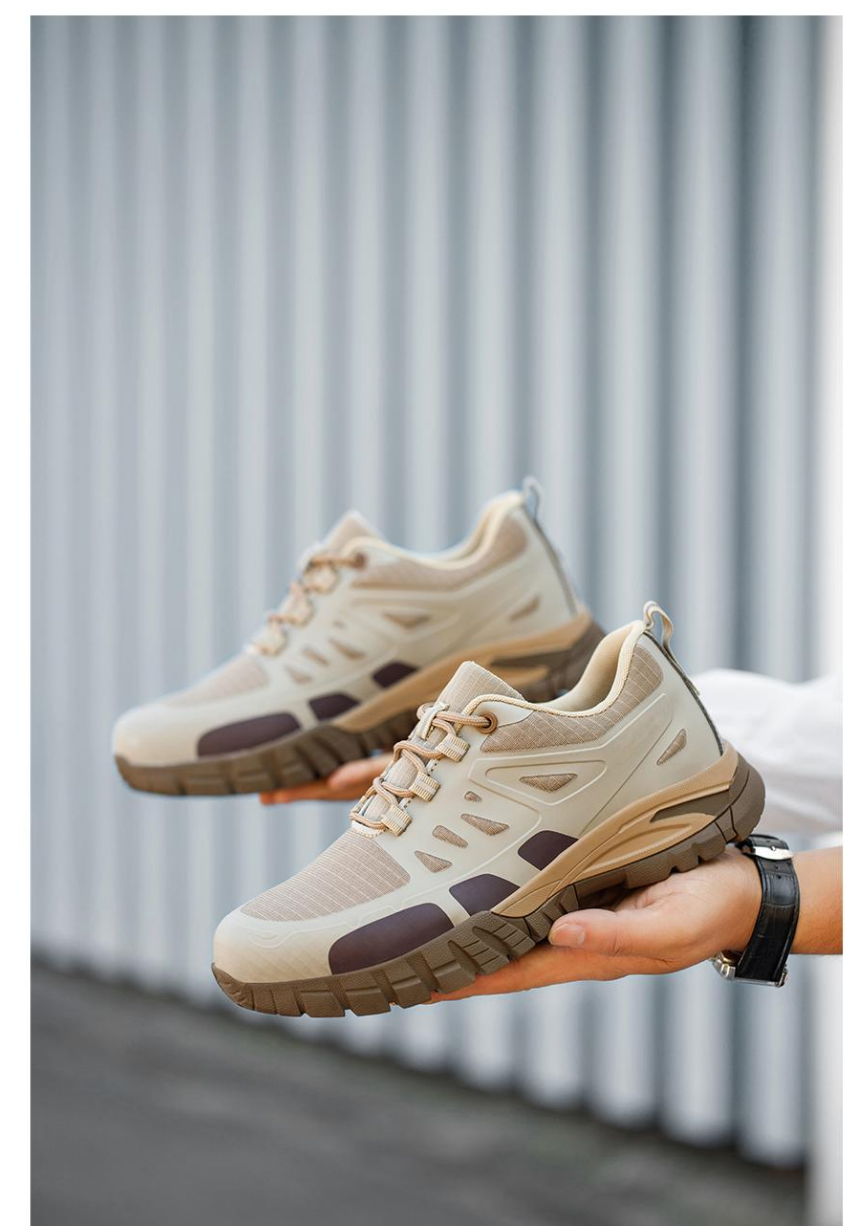




- ① Thickened kevlar midsole
- ② Flexible and puncture-resistant
- ③ Not afraid of punctures
- ④ Protecting the soles of feet at all times



- ① All shoes metal-free
- ② The best choice for the electric industry
- ③ Flyknit fabric upper for breathability and reduced heat



- ① Special for electricians
- ② Wear resistant solid sole
- ③ Breathable fly knit weave



Anti-smash Anti-puncture High temperature resistance





- ① Anti-collision design,the choice of outdoor
- ② Anti-smash, anti-stab, cowhide, breathable, no foot odor



- ① Welding shoes cowhide spark-proof
- ② Temperature resistant
- ③ Genuine cowhide is scalding proof and high



Anti-smash Anti-puncture Breathable



- ① Thickened rubber sole, resistant to iron filings
- ② Cowhide upper/splash-proof and anti-scalding/breathable and comfortable



- ① Design of thickened rubber big baotou
- ② Night reflective material



- ① Luminous design of shoe body night work is also safe
- ② Anti-slip, oil-resistant, acid and alkali resistant
- ③ The single weight of shoes is about 410G



- ① Durable double layer polyurethane solid sole
- ② Breathable, durable, imported material
- ③ Suitable for machinery/construction/ steel manufacturing/ car manufacturing/moving

