

Limit Switch Box

The APL Series Limit Switch Box is a compact, weather proof enclosure with internal adjustable position switches and an external visual indication. It has NAMUR standard mounting and drive, and is ideally suited for mounting on to quarter turn actuators and valves.

The APL Series Limit Switches features:

- Solid and compact design aluminium die-cast housing with polyester powder coated finish
- Bolt-on Visual Position Indicator
- "Quick-Set" spring loaded splined cam. No need to adjust again after initial setting. Easy setting without tools
- Dual cable entries
- Captive cover bolts to prevent loss when cover is removed
- NAMUR standard stainless steel shaft and bracket



Model	APL-2N		APL-3N		APL-4N		APL-5N	
	Standard	Option	Standard	Option	Standard	Option	Standard	Option
Enclosure Explosion proof	IP67				IP67 Eexd II BT6		IP67 Eexd II CT6	
Temperature Range	-25° C~85 ° C							
Conduit Entries	2 x 1/2" NPT	PT 1/2"PF1/2"	2 x 3/4"NPT	PT 3/4"PF3/4"	2 x 3/4"NPT	PT 3/4"PF3/4"	2 x 3/4"NPT	PT 3/4"PF3/4"
Terminal Strips	8	-	8	9~24	8	9~24	8	9~24
Position Indicators	0° ~90 °	0° ~180 °	0° ~90 °	0° ~180 °	0° ~90 °	0° ~180 °	0° ~90 °	0° ~180 °
	Closed: Red, Open: Yellow							
Switches	Mechanical Switches (Option:Prximity Sensor)							

Materials

Housing Cover & Body	Aluminium die-casting
Shaft	Stainless Steel
Indicator Cover	Polycarbonate
Indicator	ABS/Polycarbonate
Cam	Polycarbonate
Spring	Stainless Steel
Housing Cover Bolt	Stainless Steel
O-Ring	NBR
Bushing	Bronze
E-Ring (shaft)	Stainless Steel
Earth Lug	Stainless Steel
Bracket	Carbon Steel Powder coated



Limit Switch Box

Switch Configuration

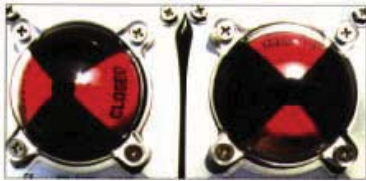


Mechanical Switches

- 2 SPDT Switches
- Contact arrangement:
250V AC/3A, 125V AC/5A, 250VDC/0.2A, 125VDC/0.4A, 30VDC/4A

Optional Switches: Proximity Sensor APL-320N 20N

- NJ2-V3-N (P&F) - Voltage range: 8V DC (IP 67 to IEC60529)
- PS17-5DNU(NPN, PNP)(Autonics) -Voltage rating : 10~30V DC



Position Indicator

Adjustable for required direction



Captive Cover Bolts

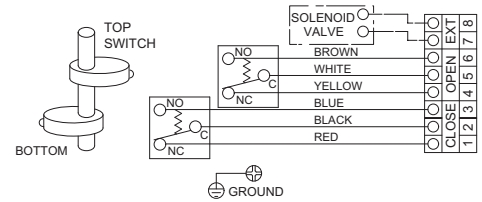
Specifically designed to prevent losing cover bolts during maintenance or installation.



Conduit Entries

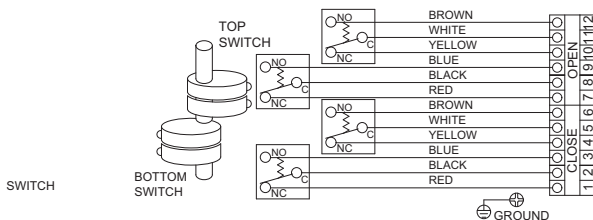
Dual conduit entries for easy installation.
Additional terminals supplied for solenoid valve terminations.

2-SPDT

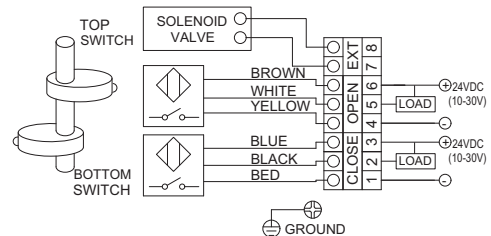


Wiring Diagram

4-SPDT



Proximity sensor



Bracket

NAMUR standard sizes: A:30x80 H20 Notes:H-Height of actuator output shaft
B:30x80 H30
C:30x130 H30



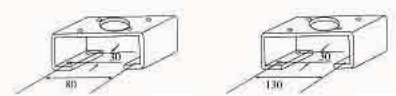
APL-210



APL-310



APL-410



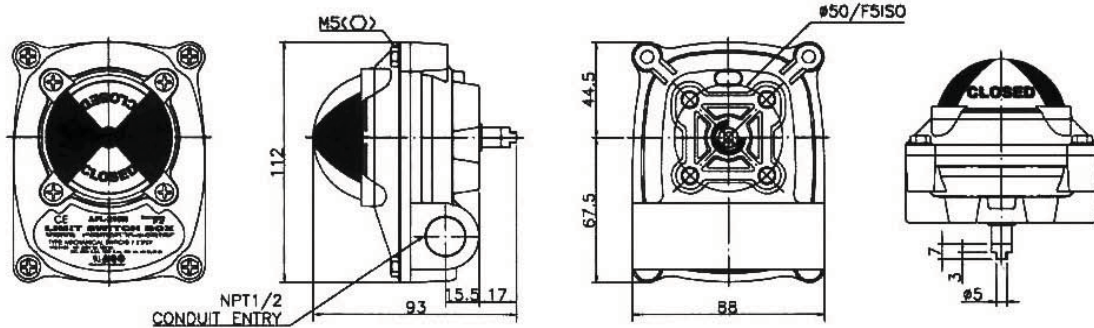
Limit Switch Box

Switch Configuration

DIMENSION

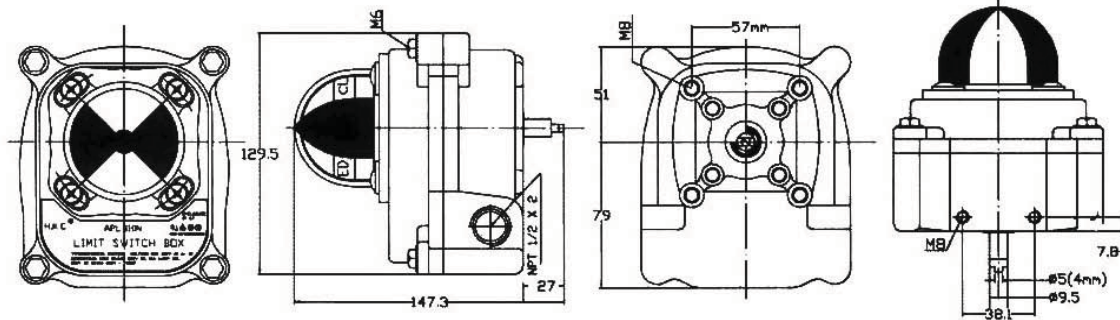
UNIT : mm

APL 2N SERIES



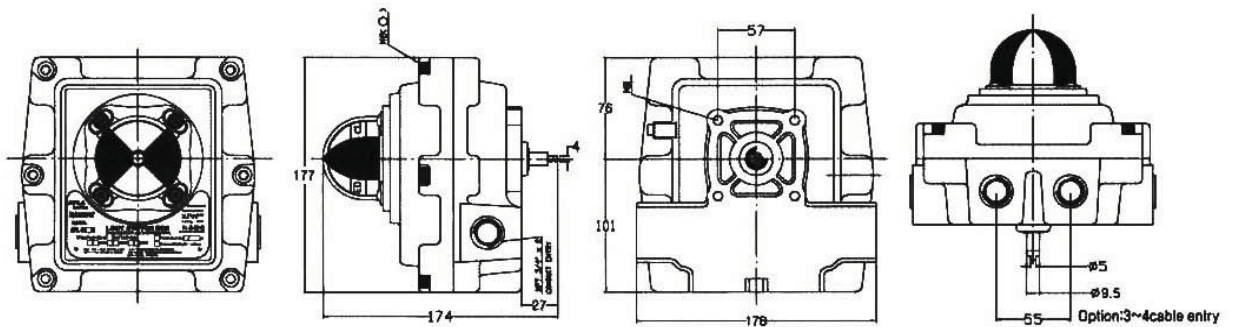
STANDARD NAMUR SHAFT

APL 3N SERIES



STANDARD NAMUR SHAFT

APL 4N SERIES



Ordering Symbols

	APL-	2	10	N	A
Enclosure	2 Weather proof IP67 3 Weather proof IP67 4 Explosion proof Eexd II BT6 5 Explosion proof Eexd II CT6			Bolt on Position Indicator	
Switches	Mechanical Swither 10 2-SPDT 13 2-SPST 11 3-SPDT 14 2-DPDT 12 4-SPDT 15 2-SPDT+Potentiometer 16 2-SPDT+Current Output Signal Unit(4~20mA)			Proximity Sensor 20 P & F.NJ2-V3-N 21 Autonics.PS17-5DNU 22 Other type sensor	
Bracket	A、B、C				