

KH SERIES MANUAL OVERRIDE



THEOBORN AUTO-CONTROL VALVES CO.,LTD

www.theoborn.com



BREIF INTRODUCTION

As a major part of automation control system, KH series manual override is widely used with pneumatic actuators in combination. It's mainly used for 90° rotary ON/OFF valve, such as butterfly valve, ball valve, plug valve. The manual override make it possible to manual operation when the pipeline is air failure.

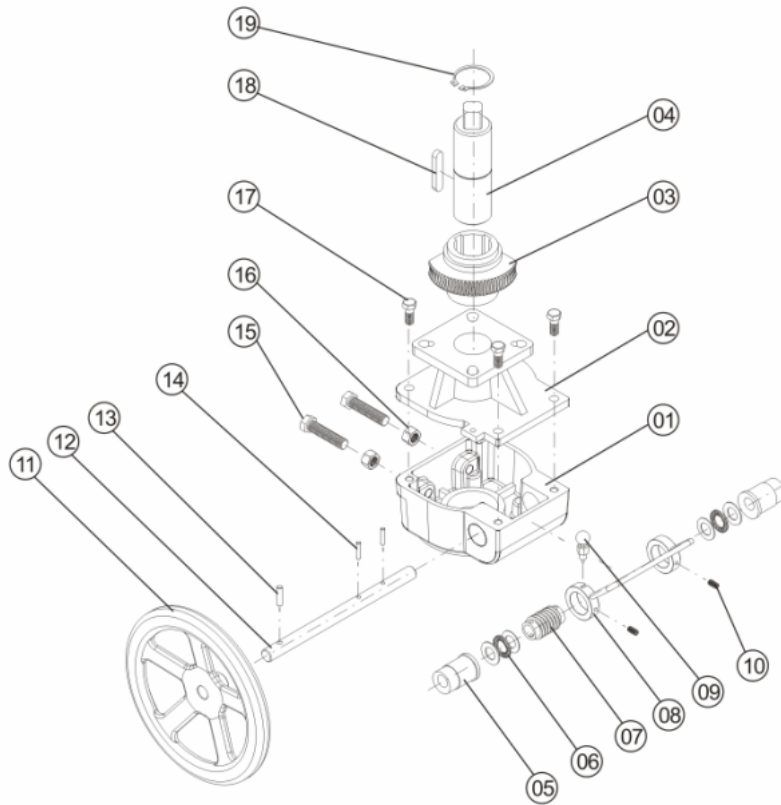
Features

High-strength, high torque

Weatherproof: IP65

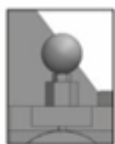
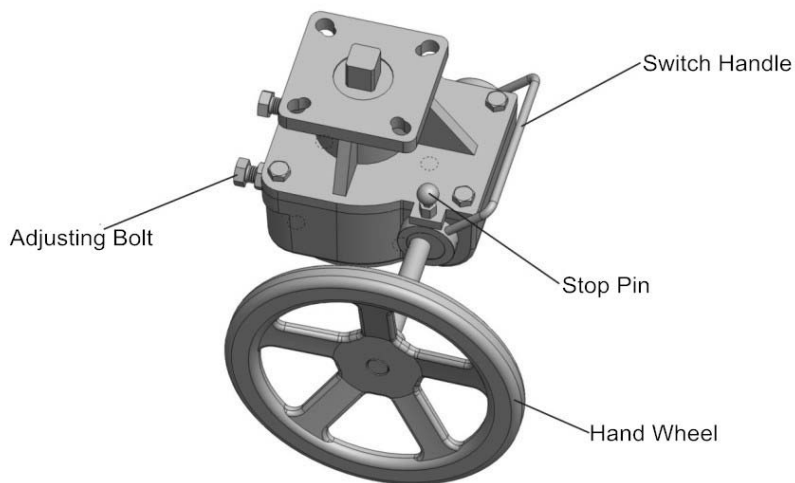
Mounting base standard: ISO5211

PARTS AND MATERIAL



Item	QTY	NAME	MATERIAL
01	1	Housing	Alloy steel/Carbon steel
02	1	Bracket cap	Alloy steel/Carbon steel
03	1	Worm gear	Nodular cast iron
04	1	Connecting shaft	Carbon steel
05	1	Eccentric bushing	Carbon steel
06	1	Bearings component	Bearing Steel
07	1	Worm	Carbon steel
08	1	Handle	Carbon steel
09	1	Limit components	Carbon steel /Other
10	1	Stopper screw	Carbon steel
11	1	Hand wheel	Carbon steel
12	1	Worm shaft	Carbon steel chrome plated
13	1	Straight pin(Hand wheel)	Carbon steel
14	1	Straight pin(Worm gear)	Carbon steel
15	1	Adjustable bolt	Stainless steel
16	1	Nut	Stainless steel
17	1	Bolt	Stainless steel
18	1	Straight key	Carbon steel
19	1	Snap ring	Spring steel

OPERATION INSTRUCTION



↑ Lift up the stop pin

Operate instruction

Manual operation: Lift up stop pin, rotate switch handle left-handed upward direction to manual operation limit position, and make sure it reaches the right place. At this time, the worm gear bites worm, you can turn the hand wheel to open/close the valve.



↶ Turn left to Manual operation

Automatic operation: Lift up stop pin, rotate switch handle right-handed downward direction to automatic limit position, and make sure it is in the right place. At this time, the worm and gear worm is separated.

There is no use to turn the hand wheel at that time.

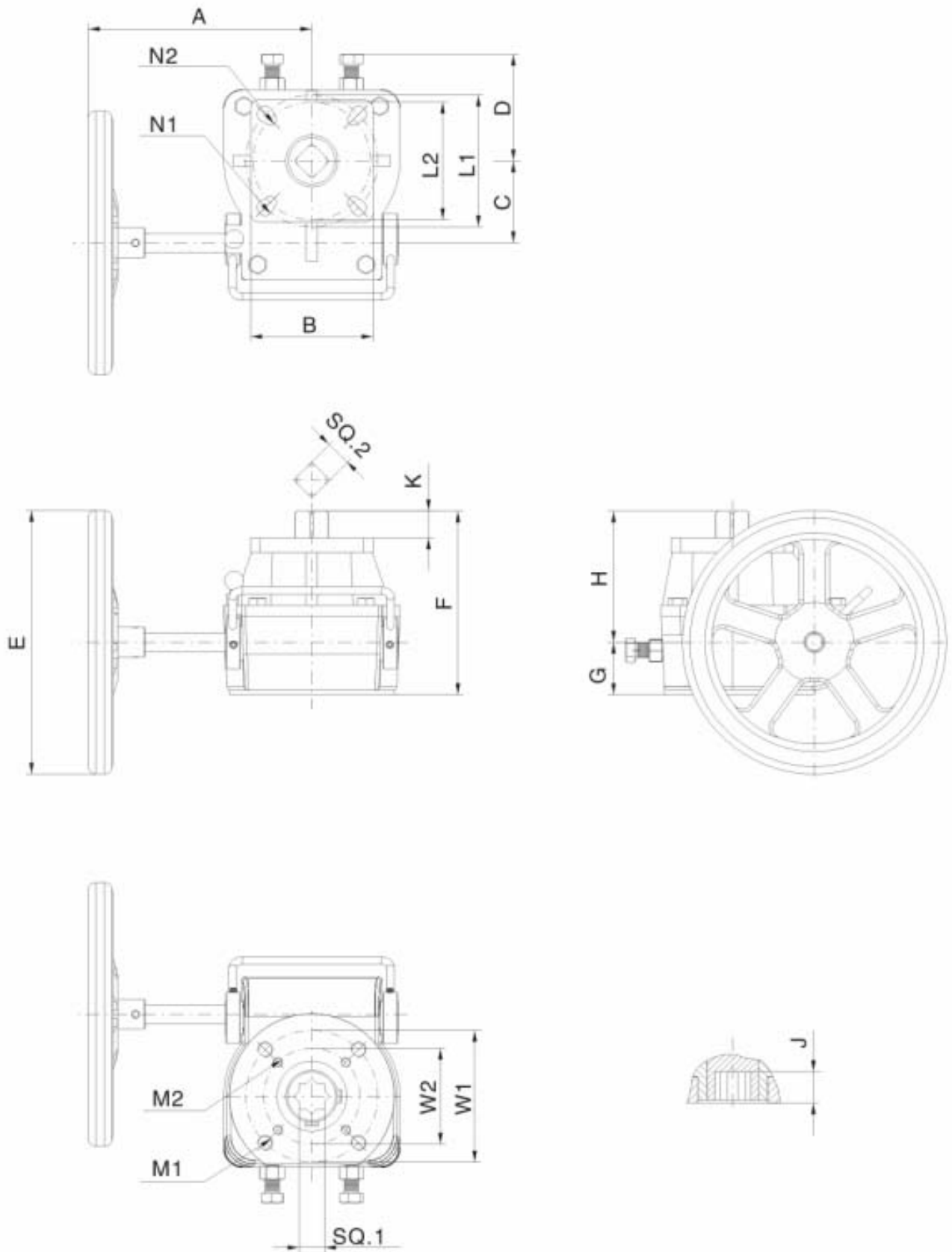


↷ Turn right to Automatic operation

Note:
When you rotate switch handle up and down, there may be a jam, because the worm gear bite worm. You only need to turn wheel lightly to solve the stuck problem.

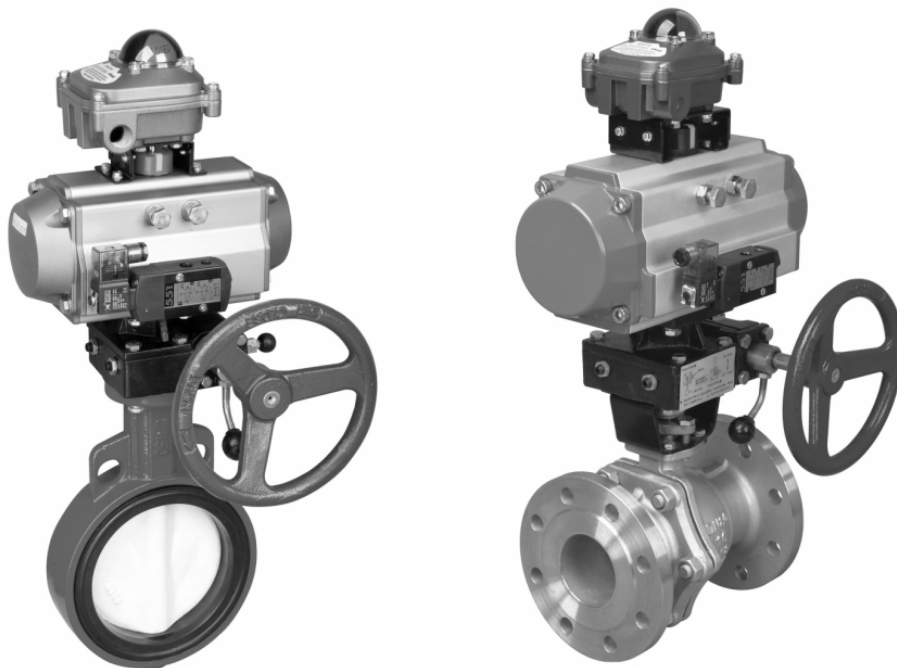
Model	Speed Ratio	Input Torque(N.M)	Output torque(N.M)	Dia of Wheel	Weight(kg)
KH-1	26:1	50	280	Φ180	2.6
KH-2	30:1	60	360	Φ200	4
KH-3	38:1	90	620	Φ280	6.5
KH-4	54:1	110	1310	Φ300	13
KH-5	80:1	140	2600	Φ400	32
KH-6	78:1	200	3500	Φ500	43
KH-7	98:1	200	4200	Φ600	65
KH-8	100:1	200	5500	Φ600	115

OVERALL DIMENSIONS



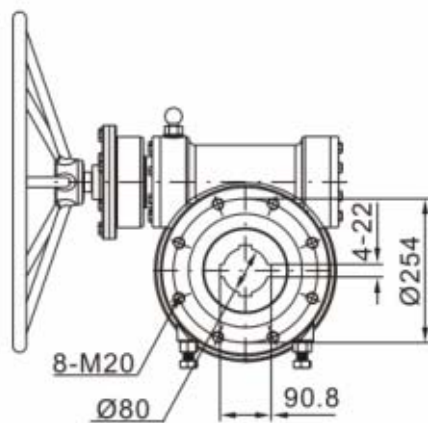
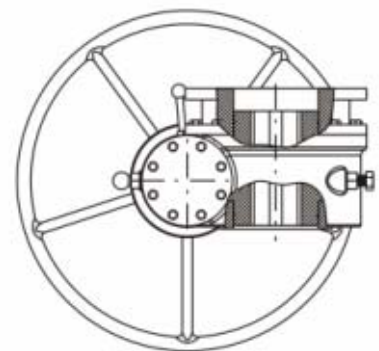
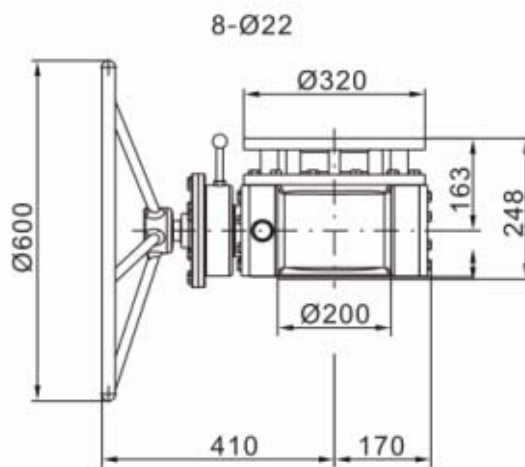
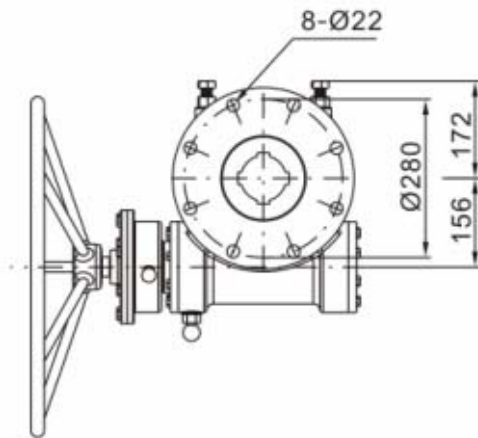
OVERALL DIMENSIONS

Model	KH-1	KH-2	KH-3	KH-4	KH-5	KH-6	KH-7	KH-8
A	150	170	200	260	310	395	435	440
B	70	95	115	140	155	160	235	300
C	50	55	82	85	125	140	170	210
D	43	65	90	102	110	140	160	170
E	Ø180	Ø200	Ø280	Ø300	Ø400	Ø500	Ø600	Ø600
F	120	127	150	195	209	233	243	252
G	35	40	40	60	55	60	60	65
H	85	87	110	135	154	172	183	187
J	16	19	24	29	40	50	58	58
K	15	19	22	28	39	48	55	55
M1	M8x4	M10x4	M12x4	M16x4	M20x4	M20x4	M16x8	M16x8
M2	M6x4	M8x4	M10x4	----	---	---	----	---
W1	70	102	125	140	165	165	200	254
W2	50	70	102	----	---	---	----	---
SQ.1	14	17	22	27	36	46	55	55
N1	Ø10x4	Ø12x4	Ø14x4	Ø18x4	Ø22x4	Ø22x4	Ø18x8	Ø18x8
N2	Ø8x4	Ø10x4	Ø12x4	Ø16x4	Ø18x4	---	----	---
L1	70	102	125	140	165	165	200	254
L2	50	70	102	125	140	---	----	---
SQ.2	14	17	22	27	36	45	55	55



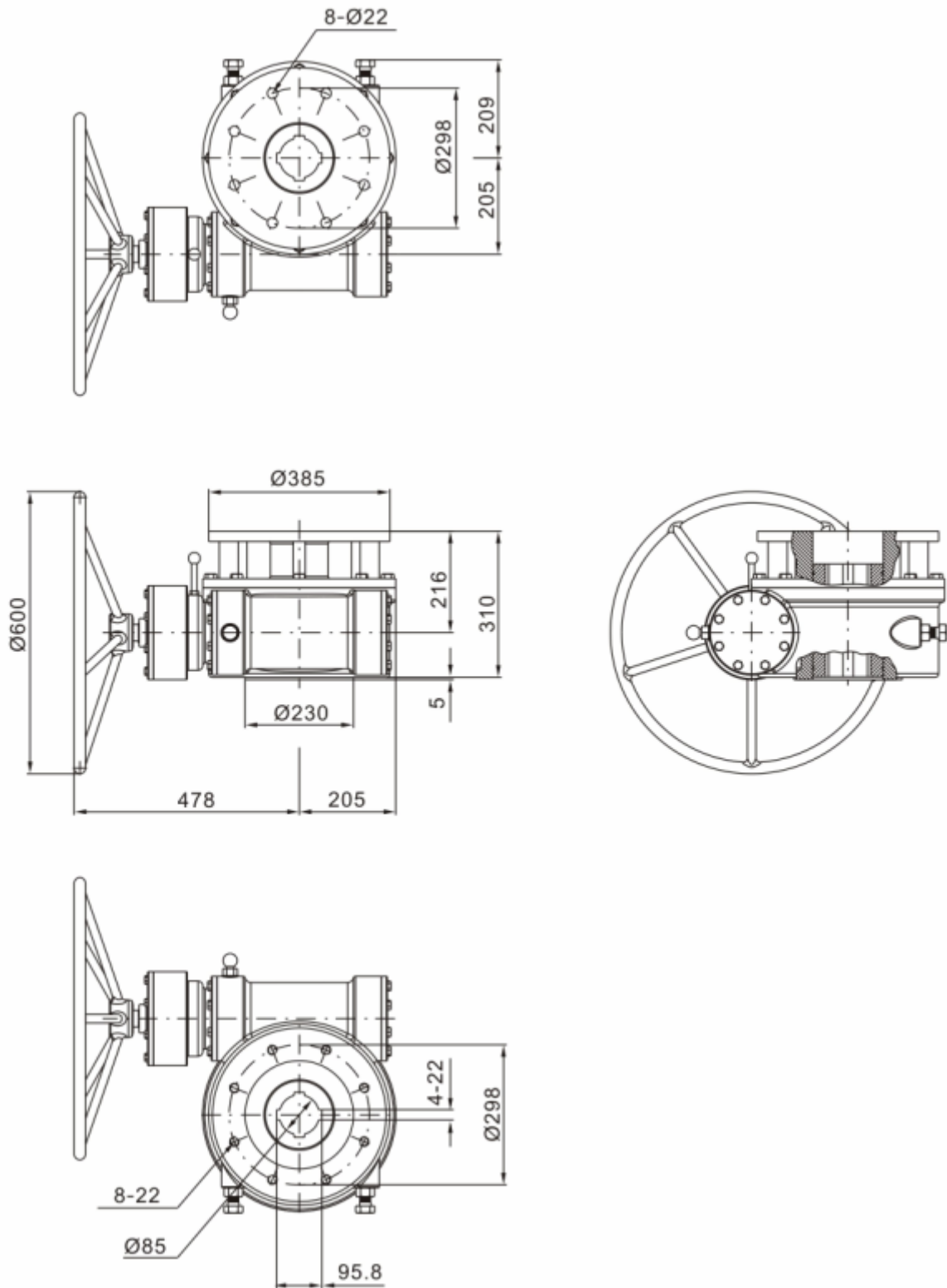
OVERALL DIMENSIONS

(Model:320:1)



OVERALL DIMENSIONS

(Model:450:1)





THEOBORN AUTO-CONTROL VALVES CO.,LTD

ADD:No.119,4th road,3rd avenue,binhai industrial zone,economic and technical,Wenzhou,China.

Tel:+86-0577-86830000

Fax:+86-0577-86887882

E-mail:story@theoborn.com

MSN:shanynnzhou@hotmail.com

Skype:[theoborn_shanynn](https://www.skype.com/user/theoborn_shanynn)

Website:www.theoborn.com