



HP144V Battery Pack Assembly Manual (HP144V 电池组装手册)

This manual is suitable for TOYOTA Prius C battery replacement guidance.

(该手册适用于丰田普锐斯 C (样品) 电池替换指导)

1. Please open the box #1 #2 #3 individually and find the components in following list (分别打开#1 #2 #3 箱并在盒子里找到如下部件):

NO. 序号	Name 名称	Quantity 数量
1	Module 模组	10
2	Voltage collection wire harness 电压采集线束	1
3	Temperature collection wiring harness or temperature probe 温度采集线束或温度探头	Wiring harness 1pc or temperature probe 3pcs 线束 1 根或探头 3 个
4	Connection sheet 连接片	8
5	M5x10 Combination nut M5x10 组合螺母	20
6	Cover plate 1 盖板 1	9
7	Insulating Cover 绝缘帽	2
8	Insulating tape 绝缘胶带	1

2. The combination of modules (模块之间的组合)

The 10pcs modules should be combined successively according to serial number which marked on the module. The module and hoop should be installed in the correct position as shown in the following figure. (10个模块按序列号依次组合在一起)。



3. To ensure the insulating performance in all the contact between modules and fixed brackets, 4 pieces fixed brackets should be wrapped with insulating tape. (将4根固定支架用绝缘胶带进行缠绕，确保模组与固定支架的绝缘性)。



4. The installation of module (模组安装)

4.1 The positive pole and negative pole of module should be installed at correct direction as shown in following figure. Install the module #10 firstly, then fix the bottom of module with #M5 nut as a basement. (将10模组进行安装，模组方向有正负之分 (如下所示)，作为固定模组基准)。



4.2 Install the temperature probe on the module: 01, 06 and 10 top buttons, and fixing the wire harness. Installation method of temperature

probe : surround the battery module with white plastic and buckle gromet. (将温度探头安装在模组:01、06、10顶部，并固定线束。温度探头安装方法：将白色塑料环绕电池模组，扣上卡扣)



4.3 Before the bottom screws of module are tightened, the plastic splints on both sides need to be loosened suitably to facilitate the adjustment of the bottom screws hole. After the bottom screws are all screwed in, fix the plastic splints on both sides, and finally tighten the bottom bolts. 底部螺丝紧固前，两侧塑料夹板适当松动，以方便调整底部螺丝孔位，底部螺丝全部拧入后，将两侧塑料夹板紧固，最后再拧紧底部螺栓



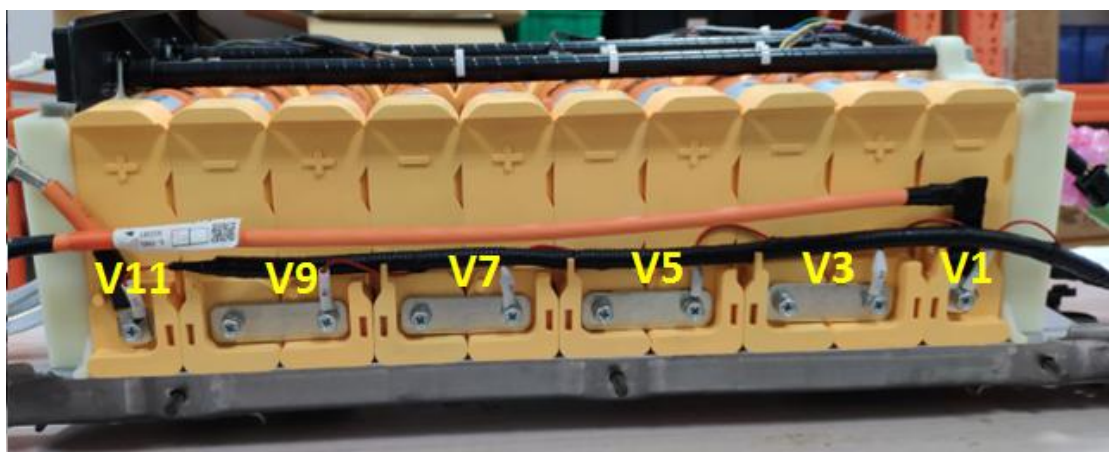
5. The installation of the connector copper bar and voltage collection wire (安装连接铜排及电压采样线)。

5.1 Install the connector copper bar and voltage collection wire synchronously (Note: Bronze screw torque 5~6N·m). (将电压采样线及连接铜排同步进行安装 (注: 铜牌螺丝扭力5~6N·m)。



5.2 Immobilize the voltage collection wire into wiring harness groove. (将电压采集线卡到固定线束卡槽上)。

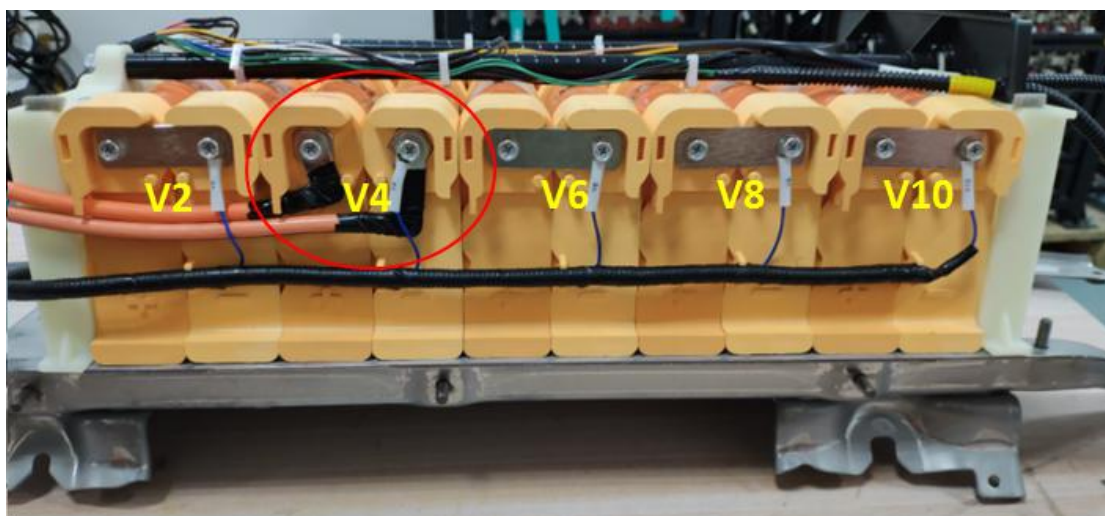
5.3 Install the voltage collection wire into wiring harness groove on the other side. (安装另一侧电压采集线束及连接铜牌)。



6. Install the wiring harness of positive pole, the wiring harness of negative pole and safety wiring harness. (安装正、负线束和保险线束)。

6.1 Install voltage collection wire #V4 insurance terminal of the original insurance connector (If the installed position of insurance connector is different from the original one, please set the insurance collection wire

according to the red circle in the follow picture. (安装原保险连接器的电压采集电路 V4 保险终端—如保险连接线的安装位置不同, 原车保险连接线要按图中的红色圆圈图案)。



6.2 Install the positive connector wire and the voltage collection wire harness #V11 . Note: The main positive wire harness of sample is in the form of a wire harness, will be optimized to connector copper bar in the future. (安装正连接线及电压采集线束 V11。注: 前期样品总正线束采用线束形式, 后续优化为连接铜牌)。

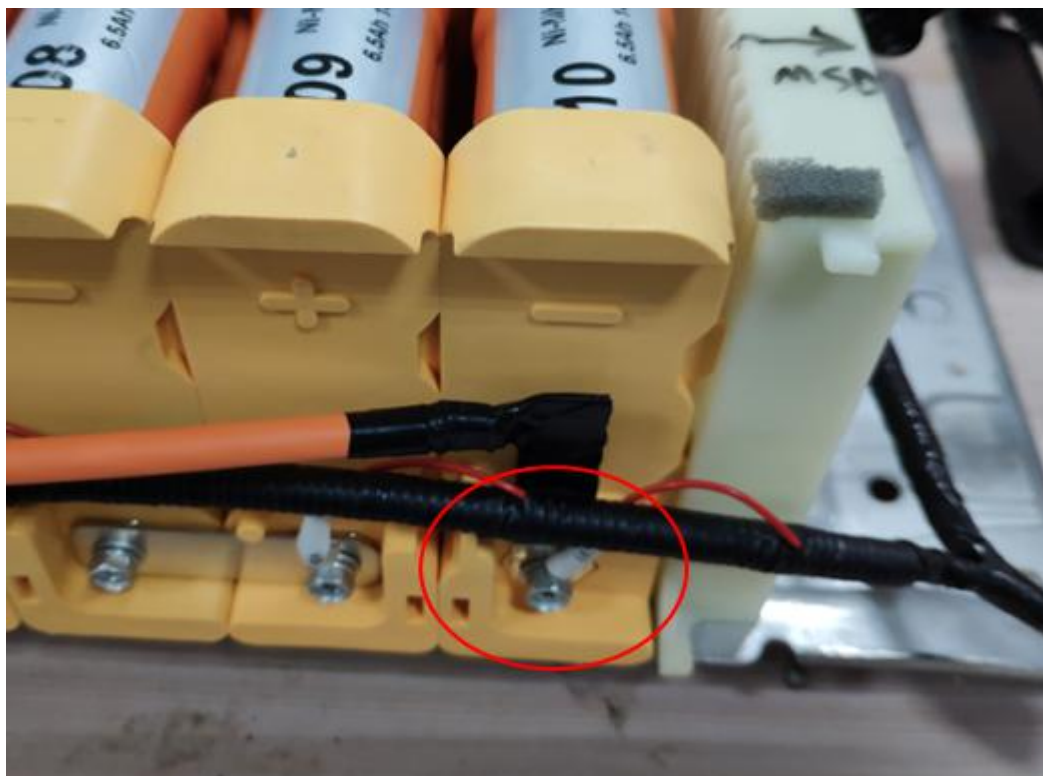


1

6.3 Install negative connector wire and the voltage collection wire harness #V01. Note:the main negative connection wiring harness adopts

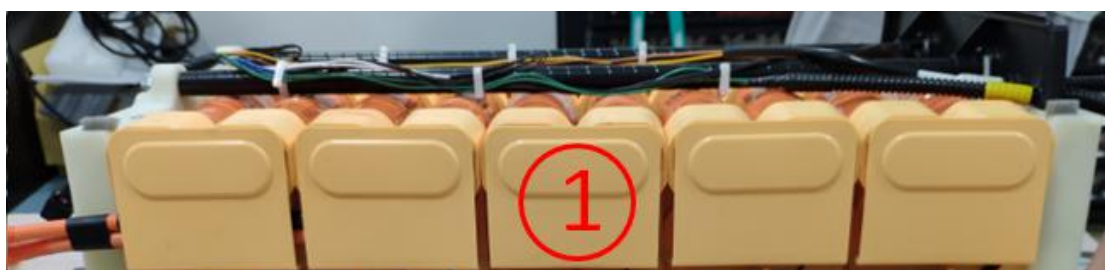
the original vehicle wiring harness, but the bent portion of the original vehicle wiring harness must be flattened to ensure that the connection terminal position is closely connected with the main negative of battery.

（安装负连接线及电压采集线束 V01。注：总负连接线束采用原车线束，但需将原车线束折弯部分压平，保证连接端子位置与电池总负连接紧密）。



7. The installation of cover plate (安装盖板①和总正、总负绝缘帽)。

7.1 Install the cover plate #①, the cover plate needs to wrap the voltage collection wiring harness. (安装盖板①, 盖板需包裹住电压采样线束)。



7.2 Install the main positive and negative insulating cover for insulating protection. 安装总正、总负绝缘帽，进行绝缘防护。



8. Install the plugs of voltage collection wire and temperature sensor according to the original position. (按原位置安装电压采集接线插头和温度传感器插头)。

9 Install the cover plate of battery pack (安装电池组件盖板)。

10. Put the battery pack back to the vehicle, and connect the main wire of positive pole and negative pole in correct position. (the correct position are marked with red circle in the follow picture). (完成组装的电池组件，然后放回车辆，正确连接正负主线)。

11. Check everything correctly after complete all accessories installation , then install the original insurance component. (完整安装所有配件，正确检查一切后安装原保险)。

Finally, start the vehicle. (最后,启动车辆)。