



HP201.6V Battery Pack Assembly Manual

The manual applies to TOYOTA's 3rd generation Prius power battery replacement guide.

1. Please open the box #1 #2 #3 #4 individually and find the components in following list:

NO.	Name	Quantity
1	Module	14
2	Voltage collection wiring harness	1
3	Connector tab	12
4	M5x10 Combination nut M5x10	28
5	M6 Nut #M6	2
6	M10 Flat washer M10	4
7	Cover plate #1	12
8	Cover plate #2	2
9	Cathode plate #3	1
10	Anode plate #4	1
11	Main cathode power line (standby)	1
12	Insulating tape	1
13	Temperature collection wiring harness	1

2. The combination of modules

The 14pcs modules should be combined successively according to serial number which marked on the module. The module and hoop should be installed in the correct position as shown in the following figure.

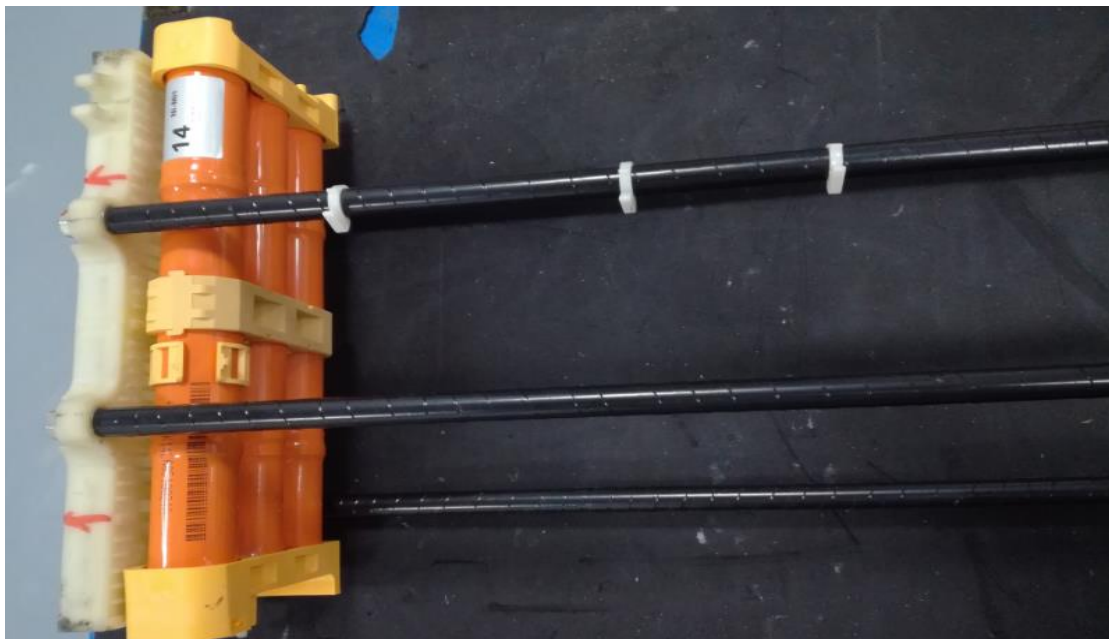


3. To ensure the insulating performance in all the contact between modules and fixed brackets, 4 pieces fixed brackets should be wrapped with insulating tape.



4. The installation of module

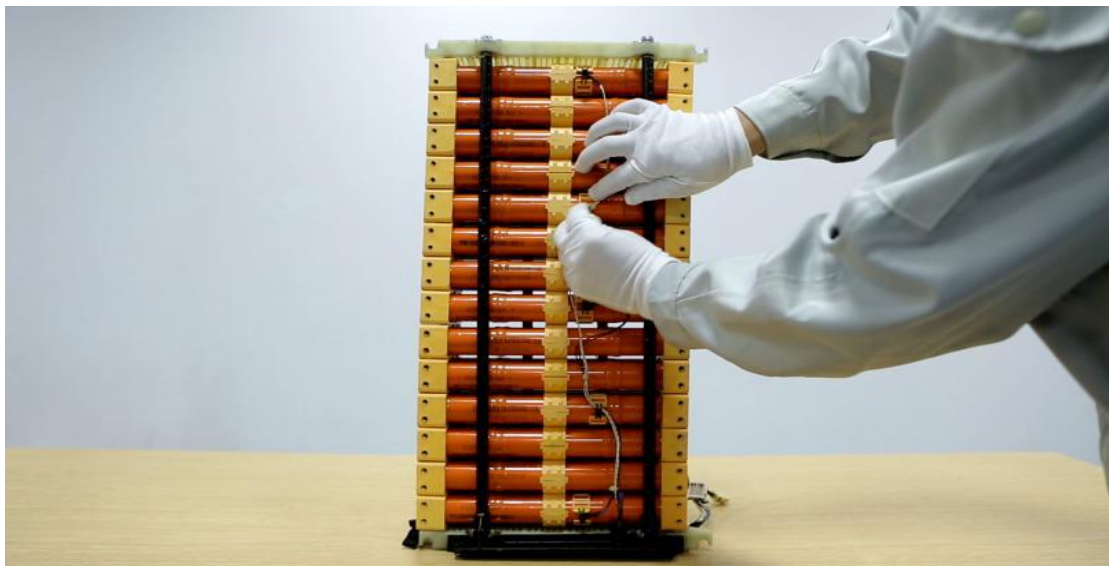
The negative and positive poles of the module should be installed in the correct direction, as shown in the figure below. First install module #01, then use #M5 nut as the bottom of the basement fixed module.



4.2 The temperature probe should be installed on the buckle of the bottom of the module #01, #07 and #14.



4.3 The temperature probe wiring harness should be installed on the buckle of the bottom of the module #04 and #10.



4.4 Tighten the screws at the bottom of module (Note: The torque of screw is 5~6N • M).



4.5 Tighten the splint screws at the bottom of module to fix the position.



5. The installation of the connector copper bar and voltage collection wire。

5.1 Install the connector copper bar and voltage collection wire

synchronously(Note: Bronze screw torque 5~6N • m).



5.2 Immobilize the voltage collection wire into wiring harness groove.



5.3 Install the voltage collection wire into wiring harness groove on the other side.



6. Install the wiring harness of cathode pole, the wiring harness of anode pole and safety wiring harness .

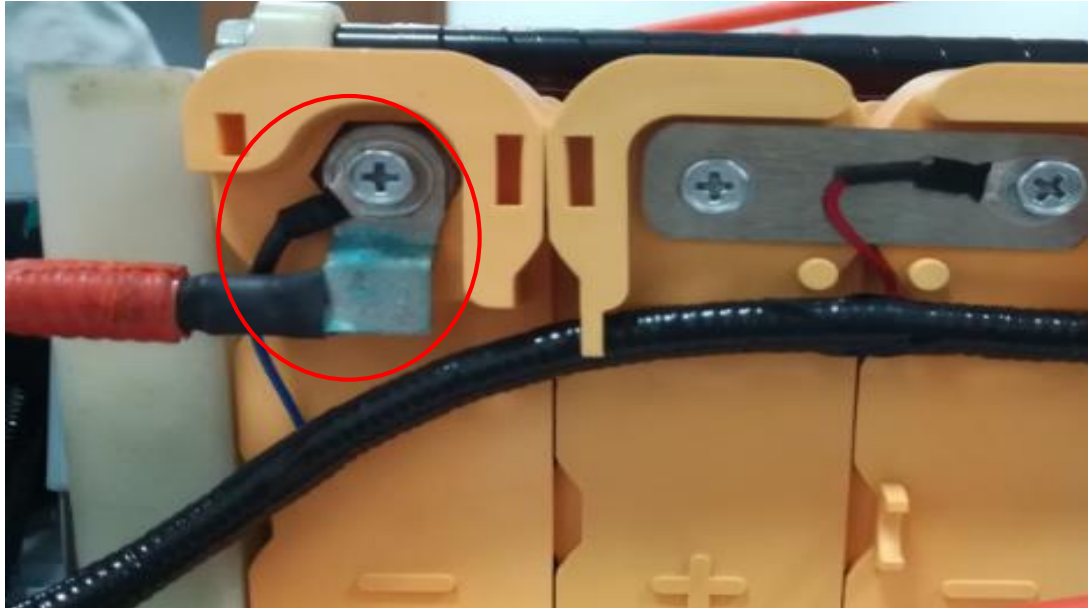
6.1 Install voltage collection wire #V12 insurance terminal of the original insurance connector.



6.2 Install the original voltage collection wire #V15 of the anode pole connector wire.



6.3 Install cathode pole connector wire and voltage collection wiring harness #v1.

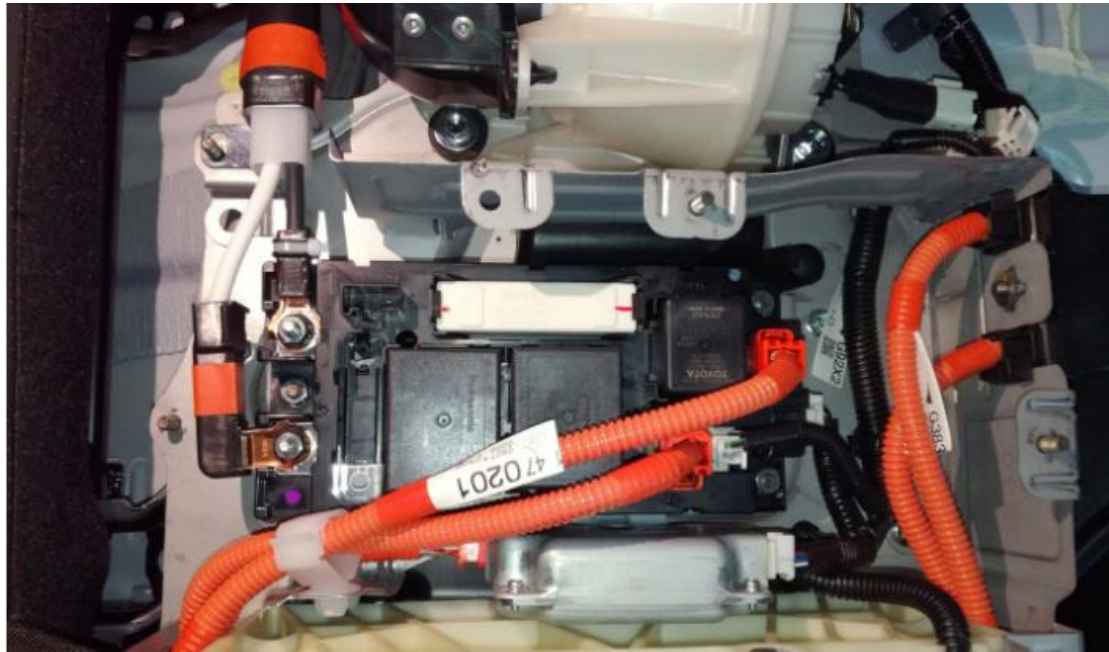


7.The installation of cover plate

7.1 Install the cover plates #①、#②、#③、#④ individually.



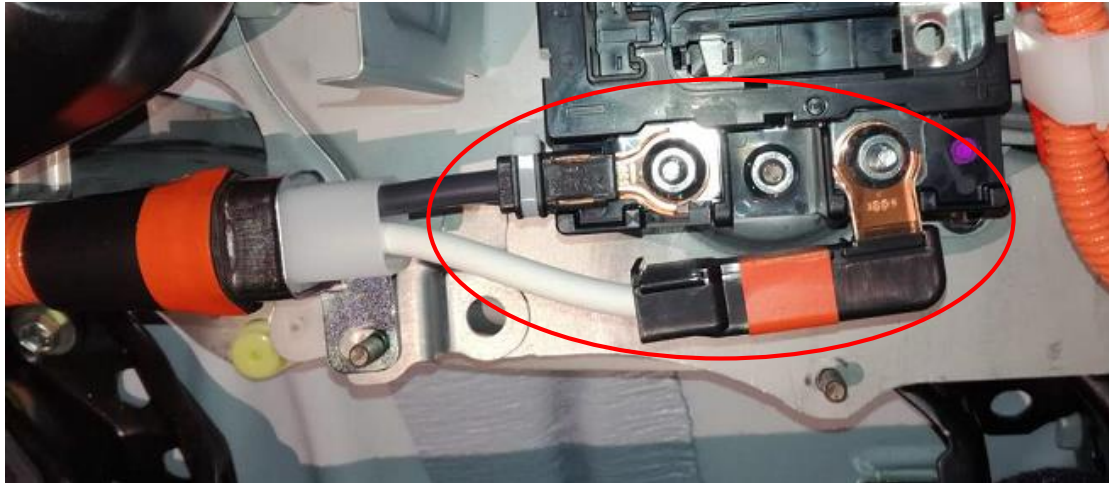
8. Install the plugs of voltage collection wire and temperature sensor according to the original position.



9. Install the cover plate of battery pack



10. Put the battery pack back to the vehicle, and connect the main wire of cathode pole and anode pole in correct position. (the correct position are marked with red circle in the follow picture).



11. Check everything correctly after complete all accessories installation , then install the original insurance component.



Finally, start the vehicle.