



## HP244.8V Battery Pack Assembly Manual

The manual applies to Toyota's 7<sup>th</sup> generation Camry power battery replacement guide.

1. Please open the box #1 #2 #3 #4 #5 individually and find the components in following list:

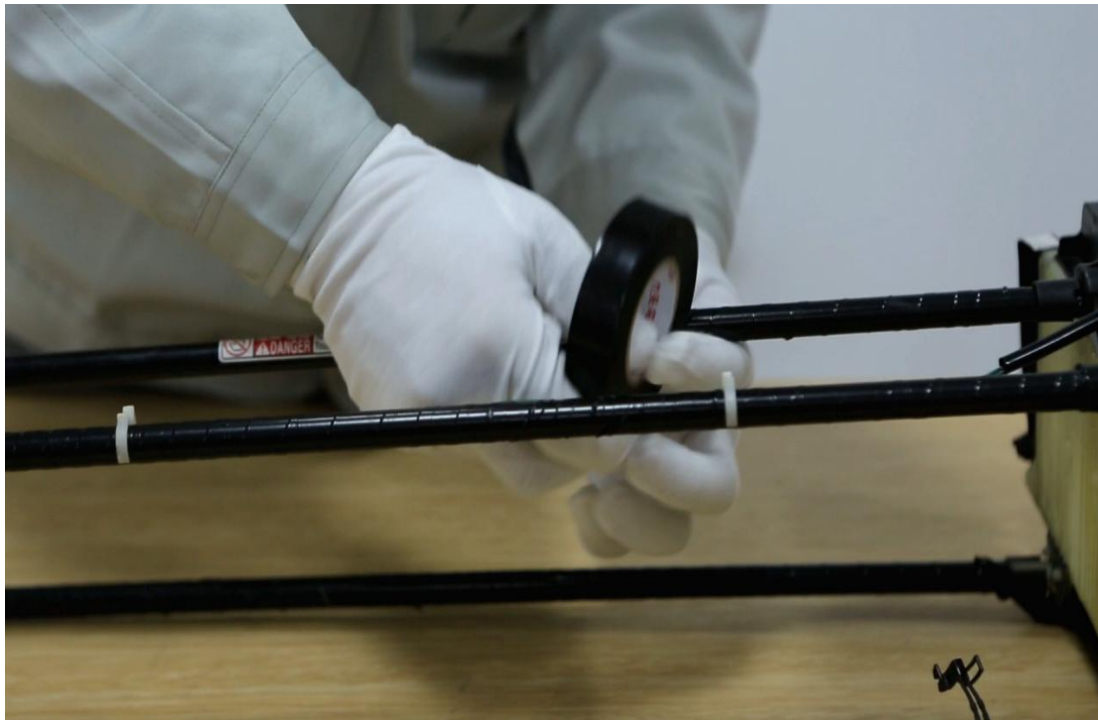
NO.	Component Name	Quantity
1	Module	17
2	Voltage collection wire harness	1
3	Connection sheet	15
4	M5x10 Combination nut	35
5	Cover plate #1	1
6	Cover plate #2	15
7	Cover plate #3	1
8	Cover plate #4	1
9	Insulating tape	1
10	Main positive power line	1

## 2. The combination of modules

The 17sets modules should be combined successively according to serial number as marked on the module. The module and hoop should be installed in the correct position as shown in the following picture.



3. To ensure the insulating performance in all the contact between modules and fixed brackets, 4 pieces fixed brackets should be wrapped with insulating tape.

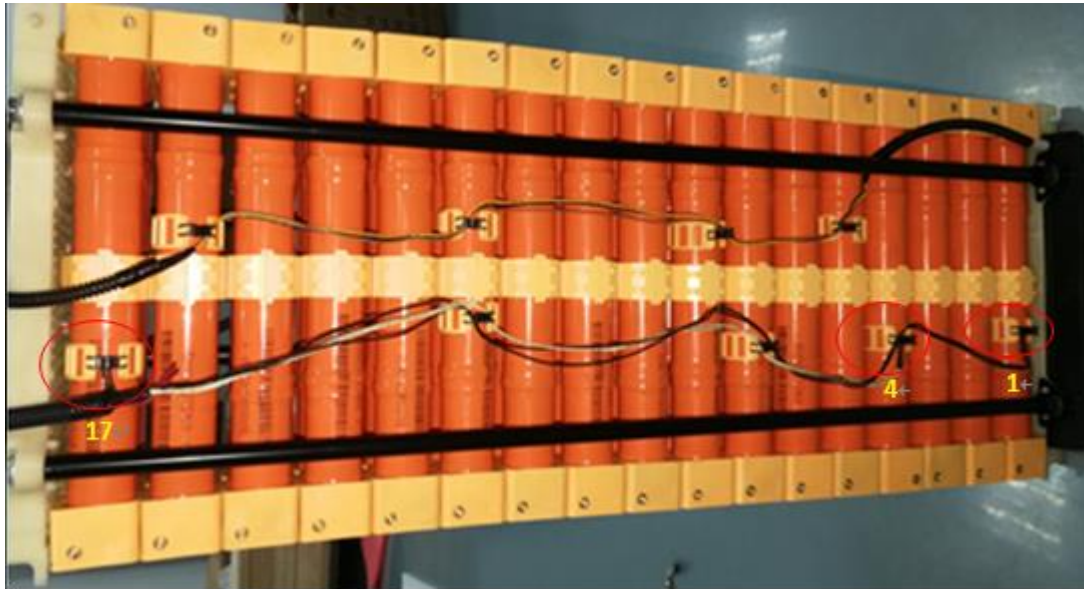


4. The installation of module

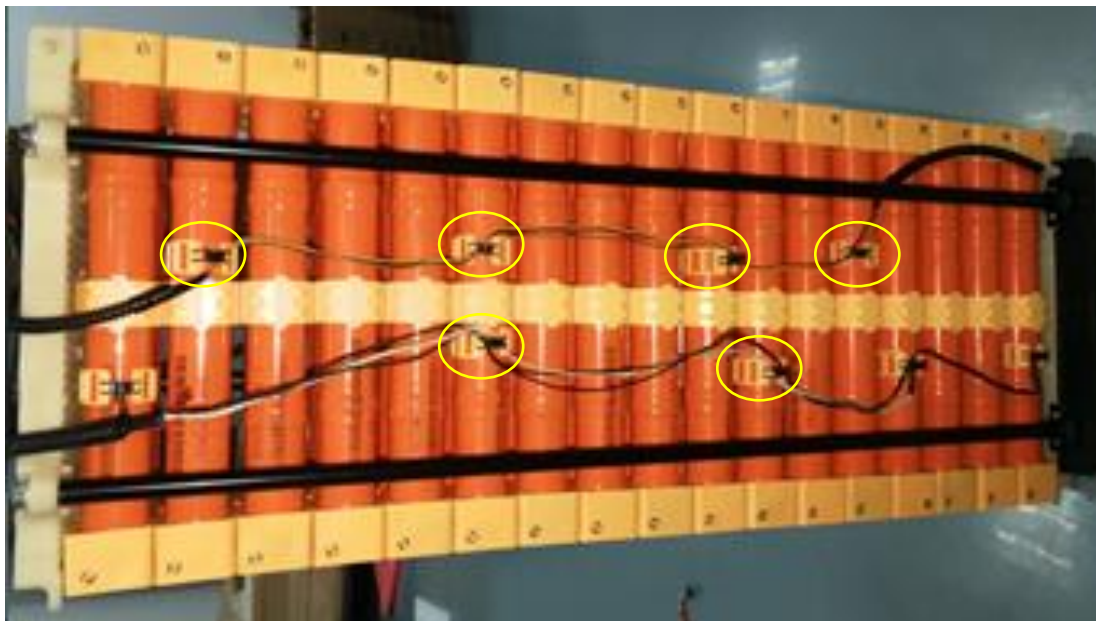
4.1 The positive pole and negative pole of module should be installed at correct direction as shown in following picture. Install the module #17 firstly, then fix the bottom of module with #M5 nut as a basement.



4.2 The temperature probe should be installed on the buckle of the bottom of the module #01, #04 and #17.



4.3 The temperature probe wiring harness should be installed on the buckle of the bottom of the module #05、#07、#08、#12、#12 and #16.



4.4 Tighten the screws at the bottom of module (Note: The torque of screw is 5~6N • M).



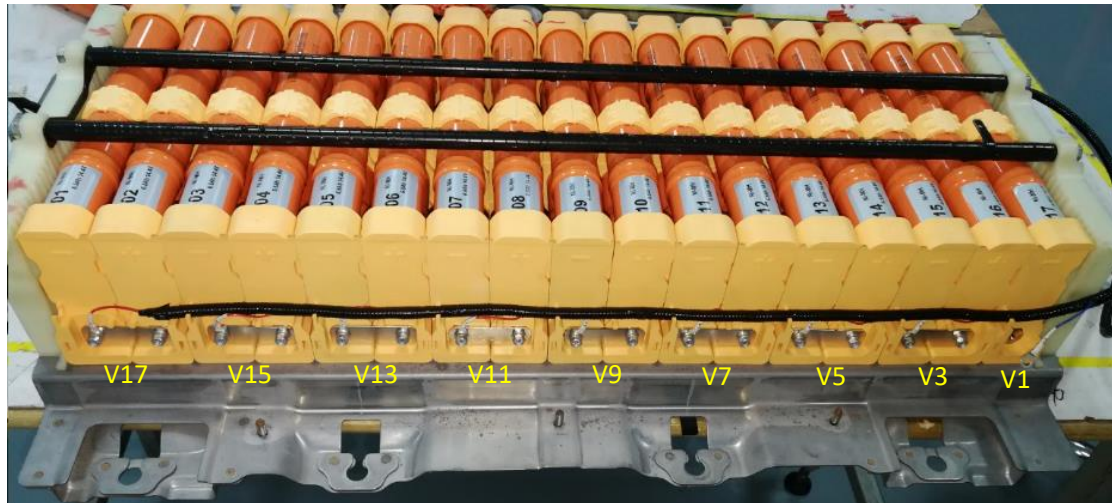


4.5 Tighten the splint screws at the bottom of module to fix the position.



5. The installation of the connector copper bar and voltage collection wire.

5.1 Install the connector copper bar and voltage collection wire synchronously (Note: Bronze screw torque  $5 \sim 6 \text{ N} \cdot \text{m}$ ).



5.2 Immobilize the voltage collection wire into wiring harness groove.



5.3 Install the voltage collection wire and connector copper car into wiring harness groove on the other side.



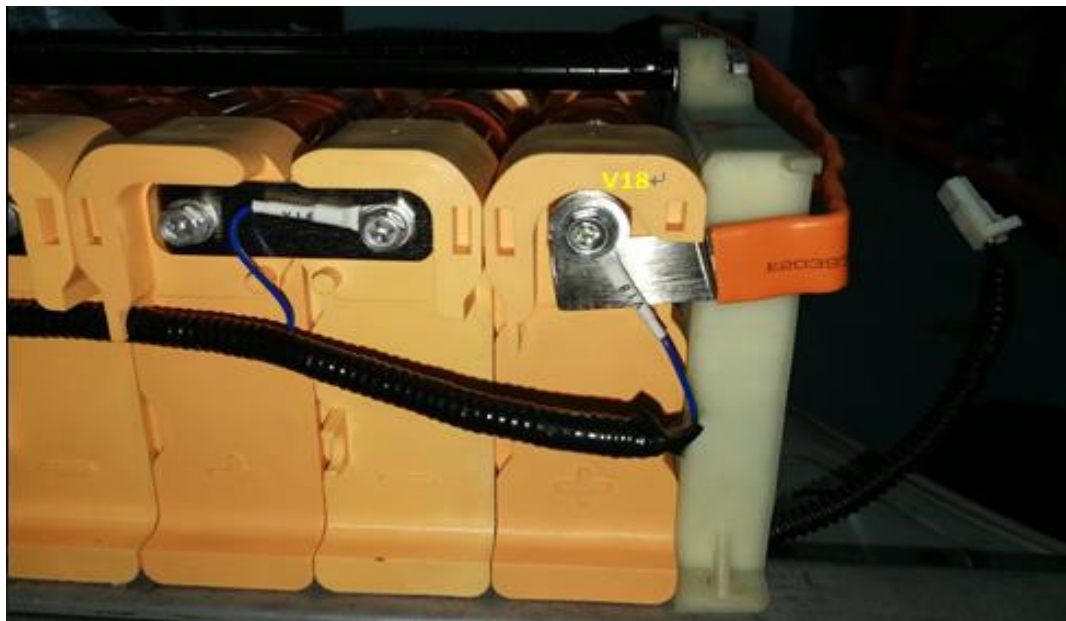


6. Install the wiring harness of positive pole, the wiring harness of negative pole and insurance wiring harness .

6.1 Install the original insurance connector on the position of voltage collection wire #V10 according to the red circle as showed in following picture.



6.2 Install the positive pole connector wire and the voltage collection wire #V18.



6.3 Install negative pole connector wire and voltage collection wiring harness #V1 .



7. The installation of cover plates.

7.1 Install the cover plates #①、#②、#③、#④ individually.





8. Install the plugs of voltage collection wire and temperature sensor according to the original position.

9. Install the cover plate of battery pack.

10. Put the battery pack back to the vehicle, and connect the main wire of positive pole and negative pole in correct position.

11. Check everything correctly after complete all accessories installation , then install the original insurance component.

Finally, start the vehicle.