



HP244.8V Battery Pack Assembly Manual (HP244.8V 电池组装手册)

The manual applies to Nissan Altima power battery replacement guide.

1. Please open the box #1 #2 #3 #4 #5 individually and find the components in following list（分别打开#1 #2 #3 #4 #5 箱并在盒子里找到如下部件）:

NO. 序号	Name 名称	Quantity 数量
1	Module 模组	17
2	Voltage collection wire harness 电压采集线束	1
3	Connection sheet 连接片	15
4	M5x10Combination nut M5x10 组合螺母	35
5	Cover plate 1 盖板 1	13
6	Cover plate 2 盖板 2	3
7	The positive plate3 正极盖板 3	1
8	Cover plate4 盖板 4	1
9	Insulating tape 绝缘胶带	1

2. The combination of modules（模块之间的组合）

The 17pcs modules should be combined successively according to serial number which marked on the module. The module and hoop should be installed in the correct position as shown in the following figure.（17个模块按序列号依次组合在一起；模块和卡箍应该放置在适当的位置）。

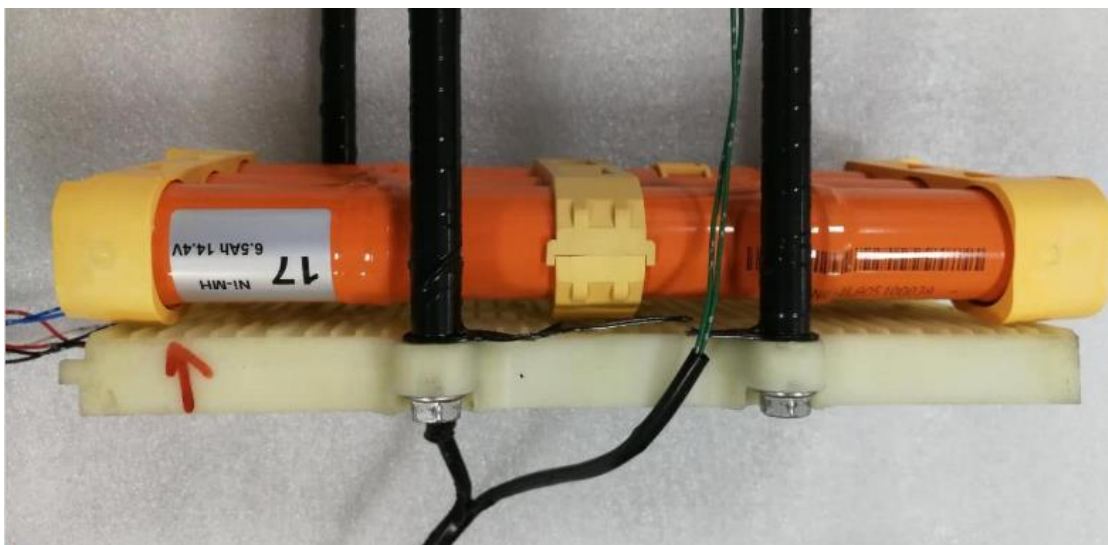


3. To ensure the insulating performance in all the contact between modules and fixed brackets, 4 pieces fixed brackets should be wrapped with insulating tape. (将4根固定支架用绝缘胶带进行缠绕，确保模组与固定支架的绝缘性)。



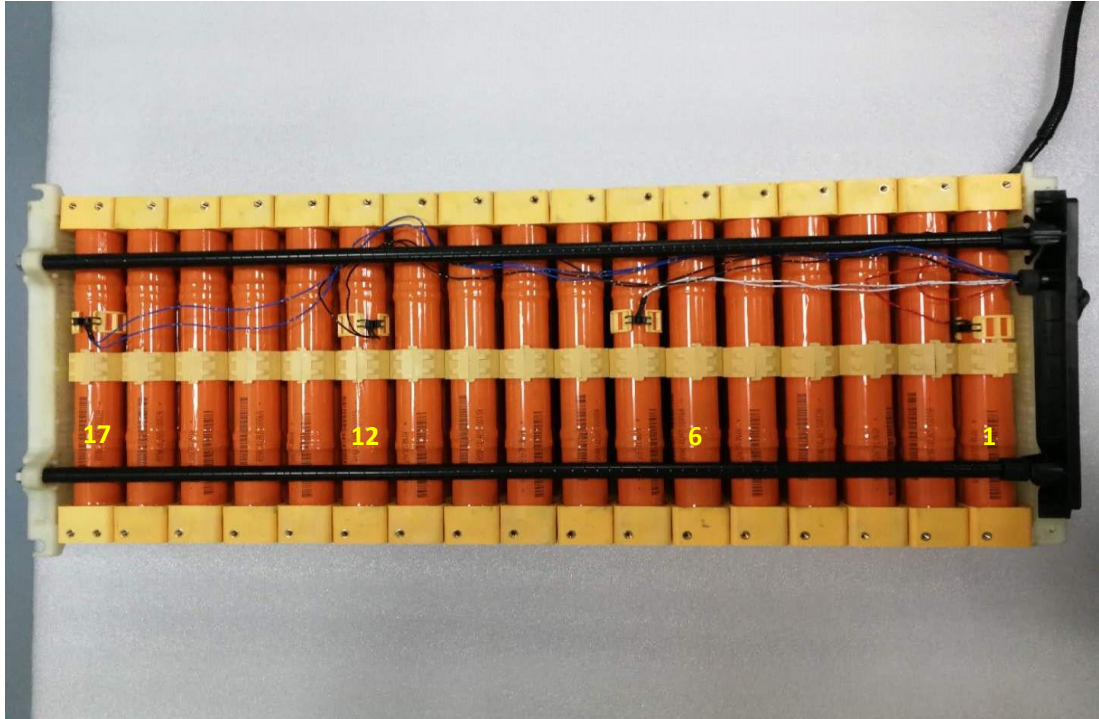
4. The installation of module (模组安装)

4.1 The cathode pole and anode pole of module should be installed at correct direction as shown in following figure. Install the module #17 firstly, then fix the bottom of module with #M5 nut as a basement. (将17模组进行安装，模组方向有正负之分 (如下所示)，作为固定模组基准)。



4.2 The temperature probe should be installed on the buckle of the bottom of the module #01, #07,#12 and #17.

(将温度探头安装在模组:01、06、12和17底部卡扣上)。



4.3 Tighten the screws at the bottom of module (Note: The torque of screw is $5\sim6\text{N} \cdot \text{M}$).将模组底部螺丝进行拧紧固定 (注: 螺丝扭力 $5\sim6\text{N} \cdot \text{m}$)。



- 4.4 Tighten the splint screws at the bottom of module to fix the position.
(将定位夹板螺丝进行拧紧固定)。



5. The installation of the connector copper bar and voltage collection wire (安装连接铜排及电压采样线)。

- 5.1 Install the connector copper bar and voltage collection wire synchronously (Note: Bronze screw torque $5 \sim 6 \text{ N} \cdot \text{m}$). (将电压采样线及连接铜排同步进行安装 (注: 铜牌螺丝扭力 $5 \sim 6 \text{ N} \cdot \text{m}$))。



- 5.2 Immobilize the voltage collection wire into wiring harness groove. (将电压采集线卡到固定线束卡槽上)。



V7 V5

5.3 Install the voltage collection wire into wiring harness groove on the other side. (安装另一侧电压采集线束及连接铜牌)。

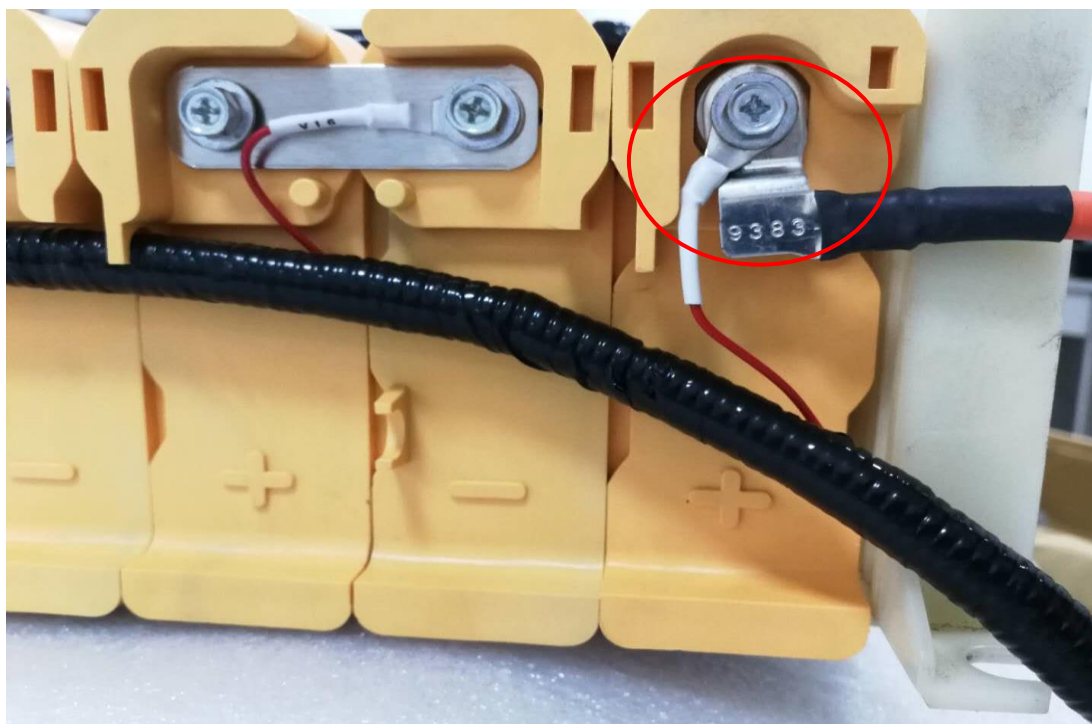


6. Install the wiring harness of cathode pole, the wiring harness of anode pole and safety wiring harness . (安装正、负线束和保险线束)。

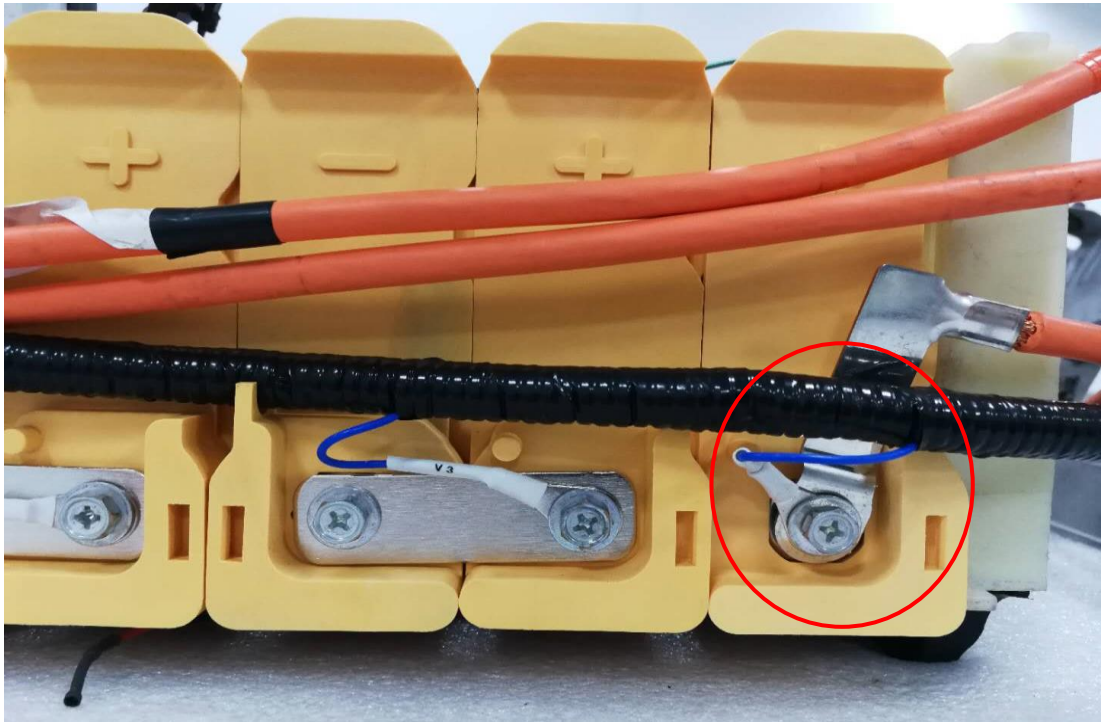
6.1 Install voltage collection wire #V7 insurance terminal of the original insurance connector (If the installed position of insurance connector is different from the original one, please set the insurance collection wire according to the red circle in the follow picture. (安装原保险连接器的电压采集电路 V7 保险终端——如保险连接线的安装位置不同，原车保险连接线要按图中的红色圆圈图案)。



6.2 Install the original voltage collection wire #V18 of the anode pole connector wire. (安装原版正连接线电压采集线束 V18)。

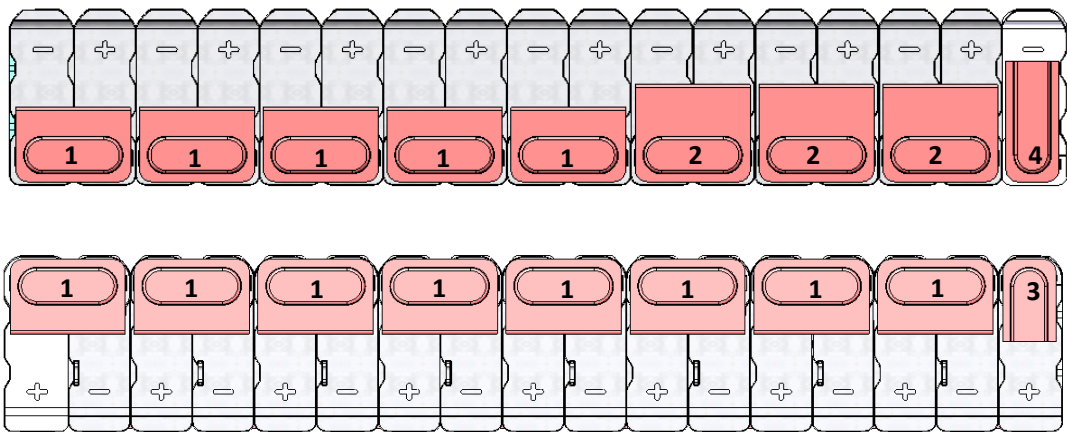


6.3 Install cathode pole connector wire and voltage collection wiring harness #V1 . (安装负连接线及电压采集线束 V1)。



7. The installation of cover plate (安装盖板)。

7.1 Install the cover plates #①、#②、#③、#④ individually. (安装盖板①、安装盖板②、安装盖板③、安装盖板④)。



8. Install the plugs of voltage collection wire and temperature sensor according to the original position. (按原位置安装电压采集接线插头和温度传感器插头)。

9. Install the cover plate of battery pack (安装电池组件盖板)。

10. Put the battery pack back to the vehicle, and connect the main wire of cathode pole and anode pole in correct position. (the correct position are marked with red circle in the follow picture). (完成组装的电池组件，然后放回车辆，正确连接正负主线—标有红圈的位置)。

11. Check everything correctly after complete all accessories installation , then install the original insurance component. (完整安装所有配件，正确检查一切后安装原保险)。

Finally, start the vehicle. (最后,启动车辆)。

The above is the installation guide for Camry xv40. The following are the differences between Nissan Altima and Camry xv40 installation.

