



## HP288V Battery Pack Assembly Manual (HP288V 电池组装手册)

This manual is suitable for Lexus LEXUS- RX400h battery replacement guidance..

(该手册适用于雷克萨斯 LEXUS- RX400h 电池替换指导)

1. Please open the box #1 #2 #3 individually and find the components in following list（分别打开#1 #2 #3 箱并在盒子里找到如下部件）:

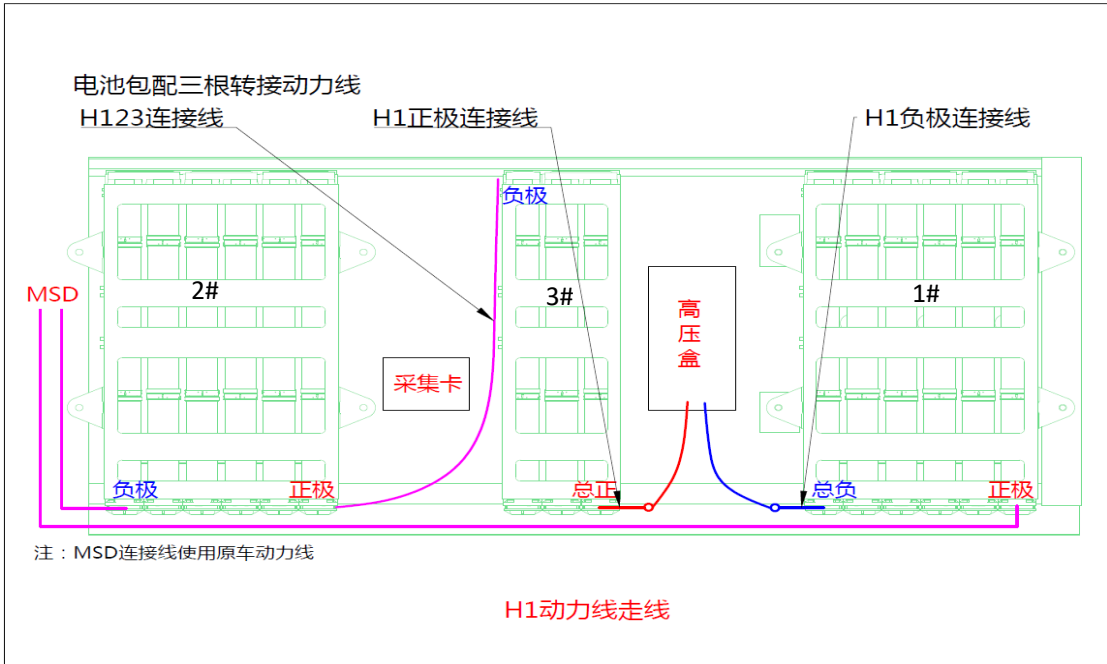
NO. 序号	Name 名称	Quantity 数量
1	Battery Box 电池箱	3
2	Combination Screw M5*10 组合螺丝	4
3	Hexagon Nut M5 六角螺母	4
4	Insulating Cover 绝缘帽	4
5	Insulating tape 绝缘胶带	1

注释:

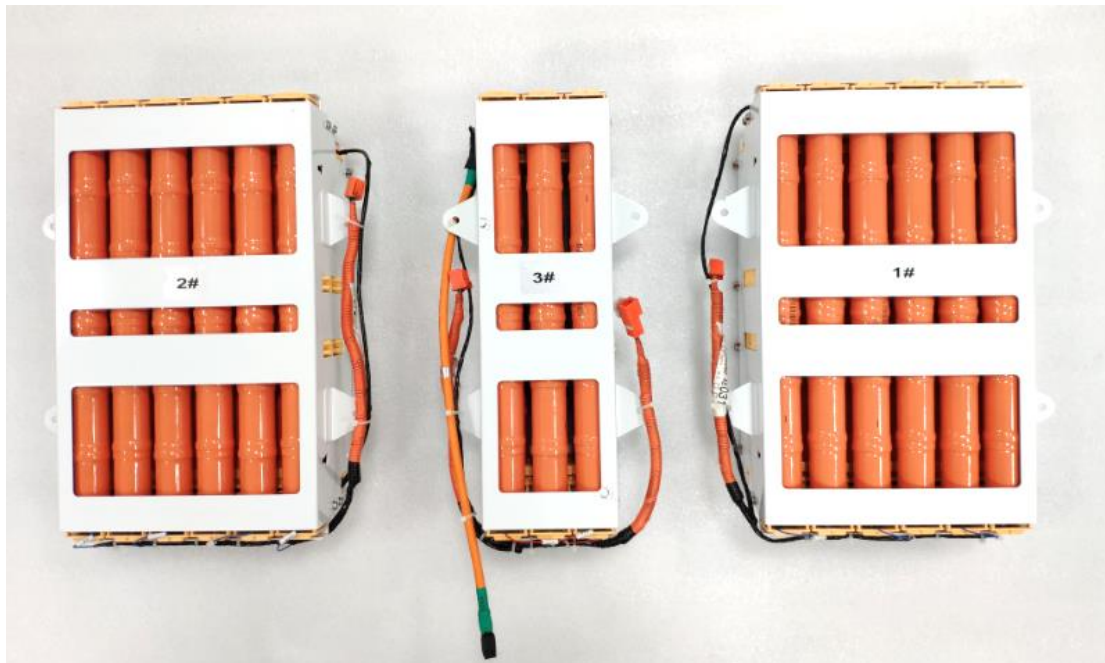
电池包由1#、2#和3#电池箱组成，单个电池箱标称电压分别为：115.2V，115.2V，57.6V，安装过程中，需严格防护电池箱正负极输出位置，杜绝外部直接将电池箱正负端连接，导致漏电、电池短路甚至人员触电现象。

Notes: The battery pack is composed of 1#, 2# and 3# battery boxes. The nominal voltage of a single battery box is 115.2V,115.2V, 57.6V. During the installation process, the positive and negative output positions of the battery box must be strictly guarded to prevent the external connection between the positive and negative terminals of the battery box, and leads to leakage, electric shock and even battery short circuit.

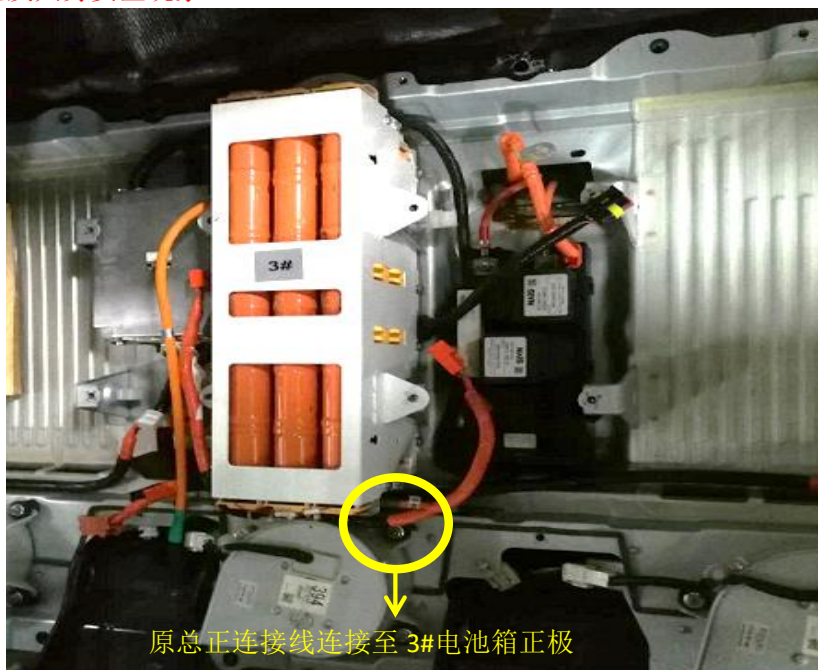
2. Power wire diagram: red one: battery positive terminal, blue one: battery negative terminal.（动力线走线示意图：红色为：电池正极端、蓝色为：电池负极端）



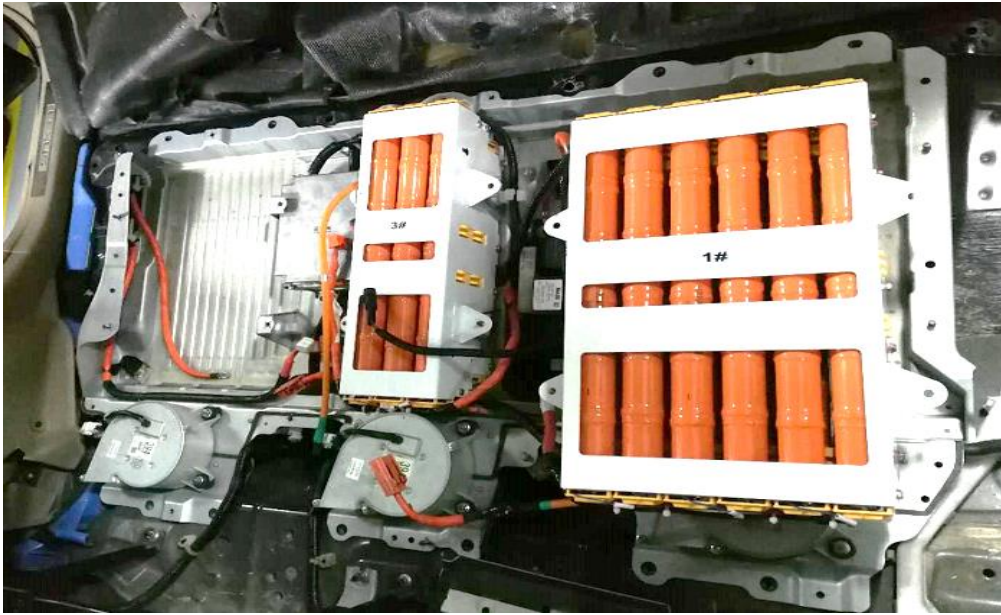
3. The unboxing status: the combination of the battery box #1,#2,#3 should be Installed orderly according to the installation order of the cabinet (拆箱状态: 电池箱 1#、2#、3#之间的组合, 按照箱体安装顺序进行依次安装, 安装及搬运过程中, 须注意电池箱两侧和底部采样线束防护, 禁止采样线束挤压受力挤破)。



4. Install the 3# battery box, and fix one terminal of 23 connector wire to the negative of the 3# battery box and tightening. Protect it with an insulating cap. (安装 3#电池箱, 警示: 电池箱总电压超过 57.6V, 安装前和安装过程中, 须保证: 电池箱负极(23 连接线)线束端和正极连接线束端绝缘防护完整, 否则会出现短路甚至危及人身安全现象)。

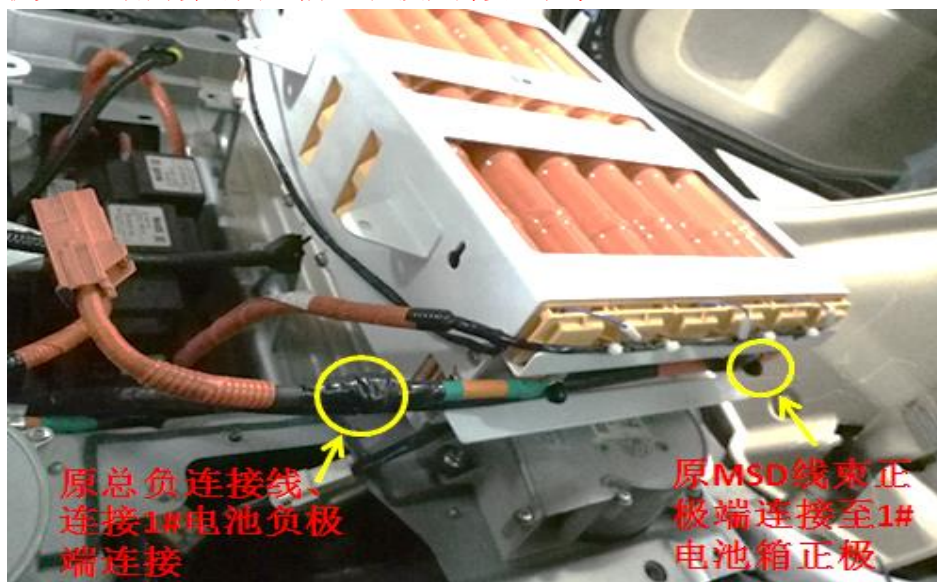


## 5. Install No. 1 battery box. (安装1#电池箱)。



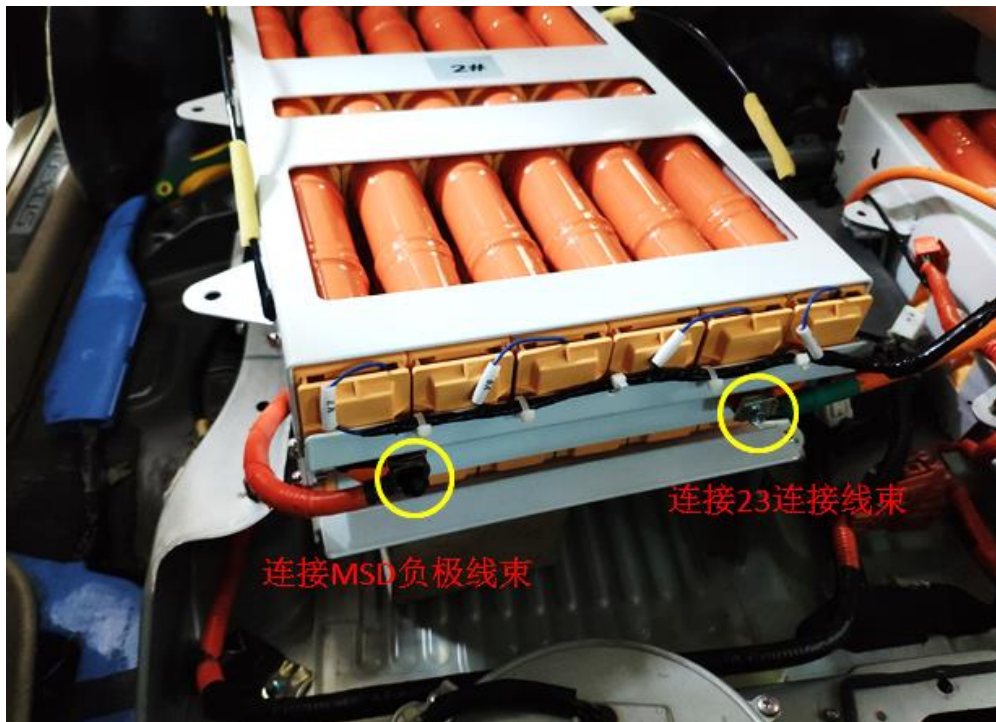
5.1 When installing the 1# battery box: firstly raise the bottom of the battery box with wood, connect the wiring harness terminal of original car's MSD positive terminal to the positive of the 1# battery box, tighten and fix it, protect it with an insulating cap, and install it into the sheet metal case. (安装 1#电池箱时: 电池箱底部用绝缘部件垫高, 原车 MSD 正极线束端子连接至 1#电池箱正极位置, 拧紧和固定, 绝缘帽和绝缘胶带防护, 安装至钣金箱体内)。

警示: 电池箱总电压超过 115.2V, 安装前和安装过程中, 须保证: 1#电池箱负极连接线束端绝缘防护完整, 否则会出现短路甚至危及人身安全现象。



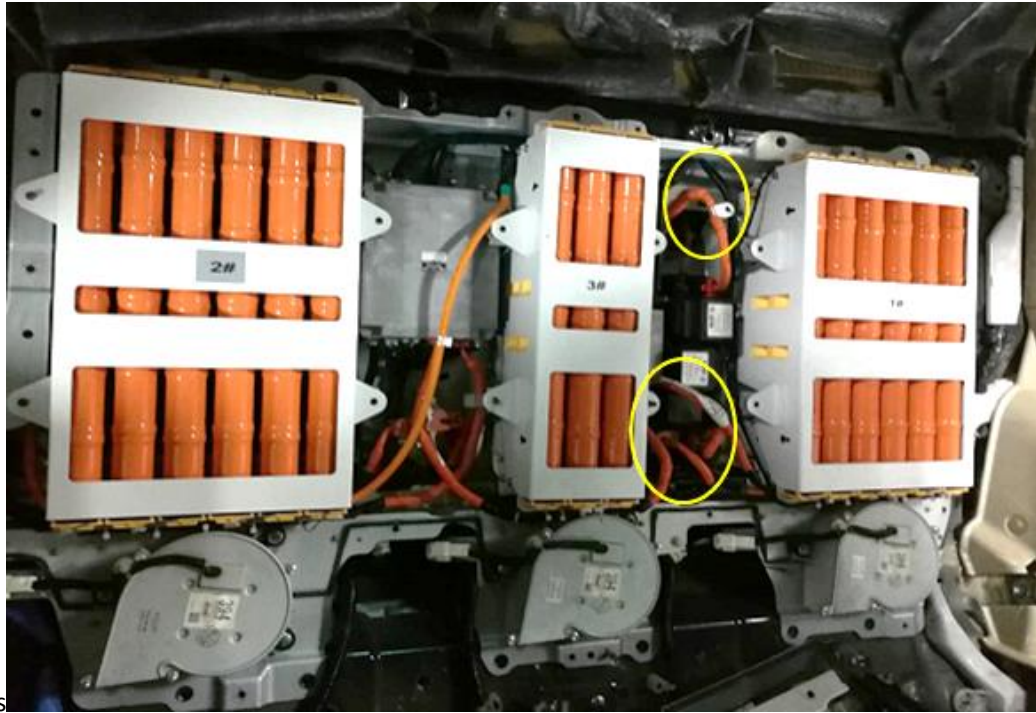


6. Install 2# battery box, raise the bottom of the battery box with wood, connect the wiring harness terminal of original car's MSD negative terminal to the negative of the 2# battery box, tighten and fix it, protect it with an insulating cap. (安装 2# 电池箱，电池箱底部用绝缘部件垫高，将原车 MSD 线束负极端子连接至 2# 电池箱负极位置，拧紧和固定，用绝缘帽和绝缘胶带进行防护)。

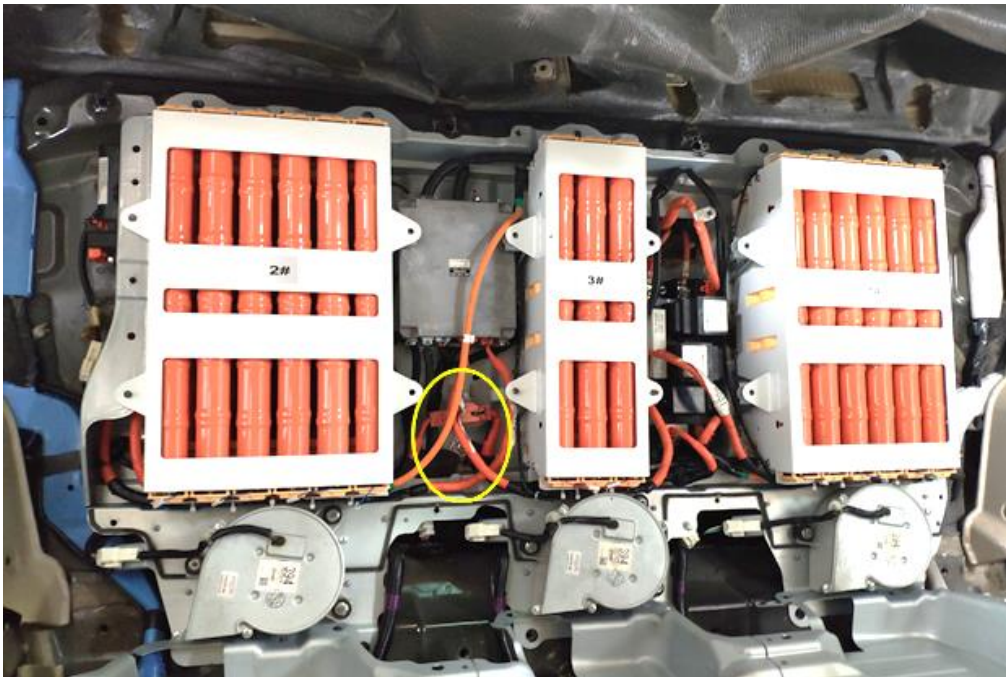


7. Fix the 1#, 2#, and 3# battery box, connect and fix the positive and negative connector wire with main positive connector wire and main negative connector wire of original vehicle respectively, and fix the original car and the main negative cable, then connect the main positive and main negative connector wire's plug fittings of original vehicle to the power distribution box in order of original vehicle. (将 1#、2#、3# 箱体进行固定，将正极连接线、负极连接线分别与原车总正、总负连接线连接和固定，原车总正、总负连接线插件按原车顺序连接至配电箱)。

警示：电池包总电压超过 288V，连接完后，需保证：电池包负极和正极位置绝缘防护完整，否则会出现：MSD 插入时电池包短路甚至危及人身安全现象。



8. Connect the voltage collection wire harness and the connector assembly of temperature collection wiring harness respectively. (将电压采集线束、温度采集线束接插件分别进行连接)。



9. Put the battery pack back to the vehicle, and connect the main wire of positive and negative in correct position. (The correct position are marked with red circle in the follow picture). (完成组装的电池组件，放回车辆，正确连接正负主线)。

10. Check everything correctly after completing all accessories installation, and then install the original insurance component. (完成所有配件安装，正确检查一切后，安装原保险)。

Finally, start the vehicle. (最后，启动车辆)。