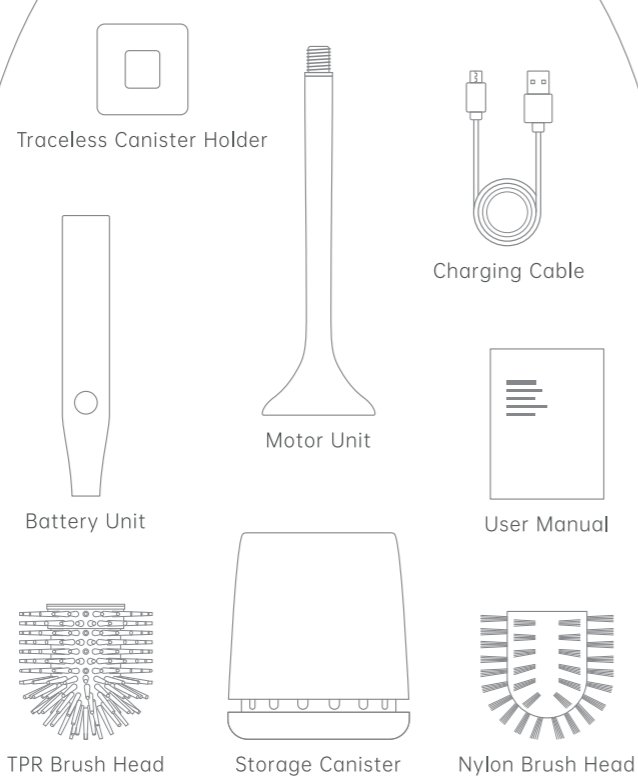
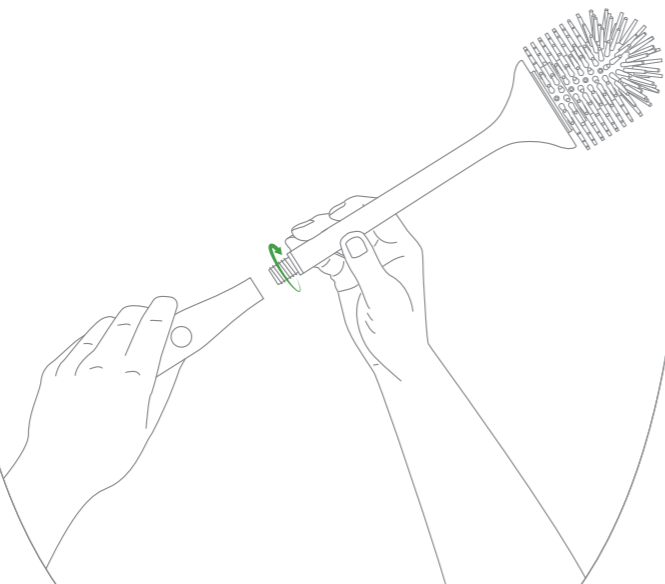


PACKING LIST



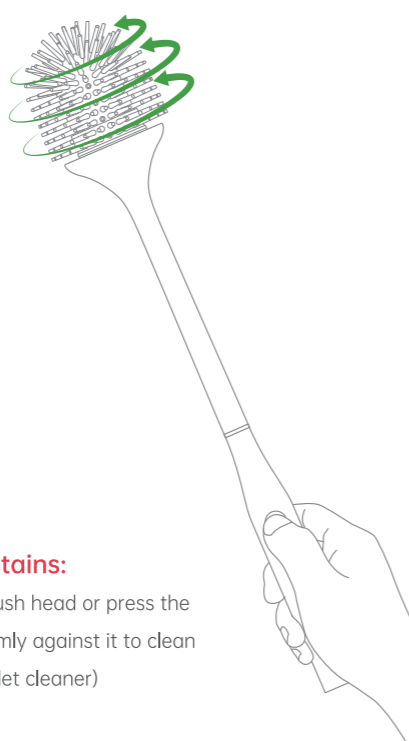
ASSEMBLY INSTRUCTION

Hold the motor unit and rotate the battery unit clockwise to assemble the brush body, then choose one brush head and attach it to the plug at the front of the motor.



CLEANING STEPS

Step 1: Press the power button to turn on the brush.



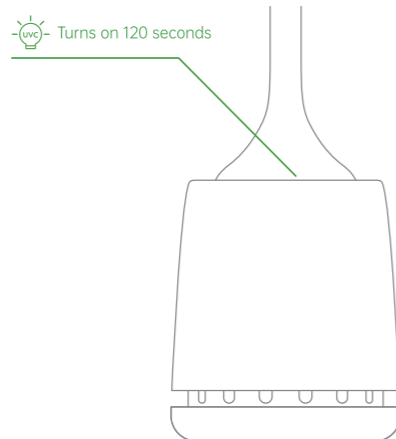
For stubborn stains:

* Use the nylon brush head or press the TPR brush head firmly against it to clean (best used with toilet cleaner)

Step 2: After finishing the cleaning work, press the power button to turn off the machine, put it back into the canister.

* Please put it into the canister after the brush head stops rotating. The UVC light will turn on automatically after power off with 3 seconds delay, and turn off automatically after the 2 minutes sterilization process.

NOTICE: DO NOT look at the UVC light directly

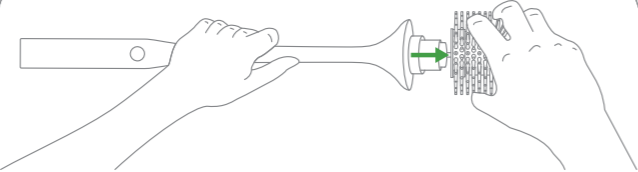


* When the UVC light is working, press the button again, the UVC light will turn off.

* In the shutdown status, if you want to directly start the UVC light, press the power button for 2 seconds.

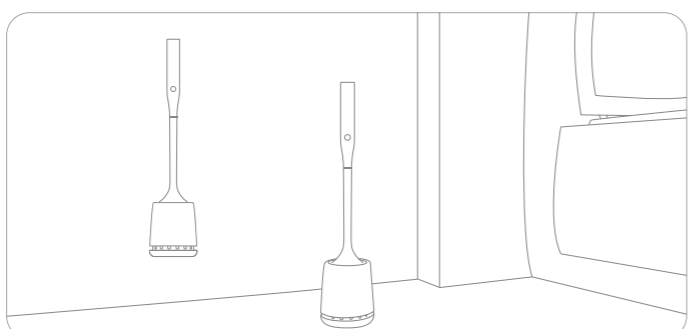
Step 3: Replace the brush head.

Wear gloves and pull out the brush head, hold the brush body and push the replacement back to it.
(align the plug to the hole in right direction)



* The brush head is made of TPR or nylon, please dispose it according to the local regulation.

This product provides 2 kinds of storage methods, floor-mounted and wall-mounted, please choose according to your needs.



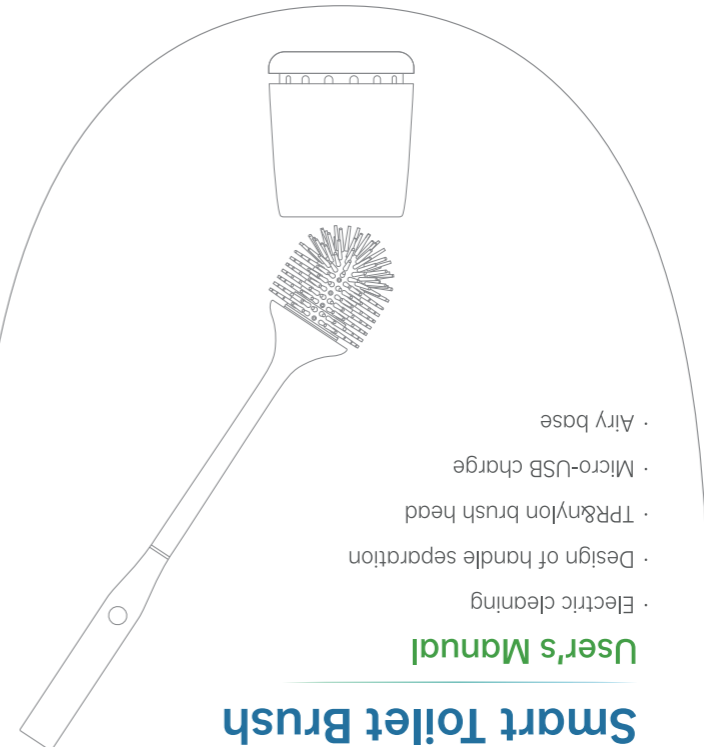
BUTTON INSTRUCTIONS

Button	Function	Remarks
Short press when power off	Turn on the brush	Blue LED turns on
Short press when power on	Turn off the brush, UVC lights turn on in 3 seconds	Blue LED turns off, UVC Sterilizing for 2 minutes * Must be put into the canister
Short press when UVC lights on	UVC lights turn off	-
Power Off, Press for 2 seconds at off status	UVC light turns on in 10 seconds	Blue light turns on, it turns off while UVC light start to work

LED INDICATOR INSTRUCTION

Status	Indicator	Time
Charging	Blue light flashes	Charging time: Around 3Hrs
Fully Charged	Blue light turns on	Continuous working time: Around 1.5Hrs
Working	Blue light up	-
Battery level low, need to be recharged	Blue light flashes	-

* If the battery level is low, please recharge the battery unit in time.



Smart Toilet Brush

- Electric cleaning
- Design of handle separation
- TPR&Nylon brush head
- Micro-USB charge
- Airly base

Goodpapa

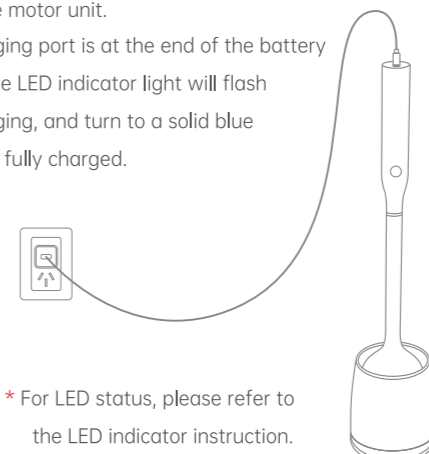
WARM TIPS

Preparation before use:

1. Make sure all the components are assembled correctly.
2. To ensure that the product works properly, please recharge the battery unit before use.

Recharging instruction:

1. Please use the micro-USB charging cable in the package to recharge the battery unit. You can rotate the battery unit anti-clockwise to take it off from the motor unit.
2. The charging port is at the end of the battery unit, the blue LED indicator light will flash when charging, and turn to a solid blue light when fully charged.



* For LED status, please refer to the LED indicator instruction.

PARAMETERS

Item No.	MT2	
Appearance	Size (With storage base)	110*490mm
	Material	ABS+TPR+nylon
	N.W	0.6kg
Parameters	Working time	1.5Hrs
	Charging time	3Hrs
	Operating noise	<70dB
	Operating temperature	0-45°C
	Max Power	29W
	Speed	300r/min
	Motor	DC Brush motor
Battery	UVC Wavelength	270-285nm
	Battery type	Lithium battery
	Battery volume	2000mAh
	Output voltage	3.7V DC
Others	Charging voltage	5V 1A DC
	Waterproof	IPX6

TROUBLE SHOOTING

Does not work	Battery level low, please recharge in time.
Can not be recharged	Use another adapter or charging cable
Brush does not rotate	Check charging cable is connected correctly or not
Stops while cleaning	Check if the brush head is stuck
	Out of power, please recharge it
	The brush head is stuck for a long time, check whether the brush head is stuck

PRECAUTIONS WHILE USING

1. This product is only used to clean the home environment, do not use it in commercial or industrial environments.
2. Only the brush head part is waterproof, the other parts can not be immersed in water.
3. Please turn off the power when stuck.
4. Please replace the brush head when power off.
5. This product is not suitable for children and people with disabilities to avoid danger.
6. Please do not immerse the whole machine in water.
7. Please don't aim at the human body or animal to avoid injury.
8. After cleaning, please turn off the power of this machine.
9. Please do not disassemble and repair by yourself.
10. Do not place the charging cable near a heat source.
11. If you do not use this product for a long time, please turn off the machine after fully charged, put it in a cool place, charge it at least once every 6 months to avoid over discharge of the battery.
12. Please use this product in accordance with the instructions in the manual. Any damage caused by improper use shall be borne by the user.

WARRANTY AND SUPPORT

How to obtain customer service in the quickest and most direct way.

1. Send an email with your order number to Goodpapa (Seller) official email (24h on-line, handle instantly):

service@goodpapa.net

2. Additionally, contact Goodpapa directly on Amazon. (If meet vacation, handling time maybe delay)

Warranty Policy:

1. Within 30 days, If you are not satisfied with our product, please do not damage the product's package and bar code, contact the platform customer service or us directly to guide you to return.
2. Within 1 year, We provide accessories and technical support for free and guide customers to repair the brush. (We will cover the accessories' shipping fee)
3. Within 1-2 year, We provide accessories and technical support for free and guide customers to repair the brush. (buyer pays the accessories' shipping fee)
4. Over 2 years, We provide technical support for free and guide customers to repair the brush. (buyer pays the accessories' fee and shipping fee).

名称	尺寸	材质	工艺
马桶刷英文说明书	100×130mm	105g双铜	风琴折六折页, 裁成马桶形状