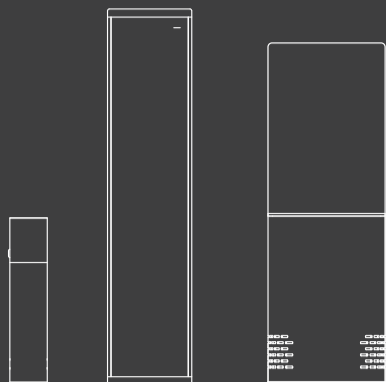


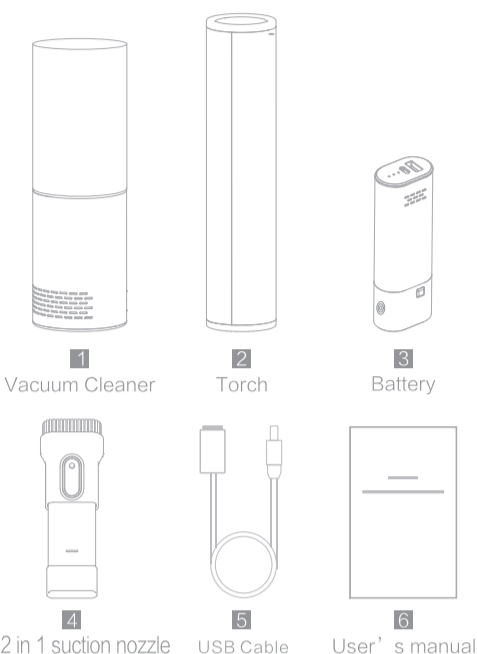
H1 PRO

Vacuum cleaner+Torch+Power Bank
User's Manual

Thanks for choosing our product



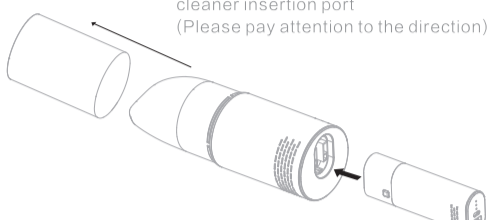
COMPONENT LIST



INSTRUCTION OF USE

►How to use as a vacuum cleaner

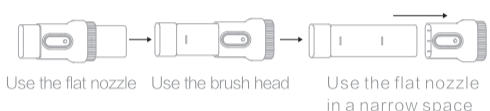
Open the vacuum cleaner dust cover
Insert the battery to the vacuum cleaner insertion port
(Please pay attention to the direction)



► Suction nozzle



Insert the 2-in-1 nozzle into the main unit and clean it according to the actual environment.

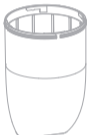


1 Rotate to remove the dust cup

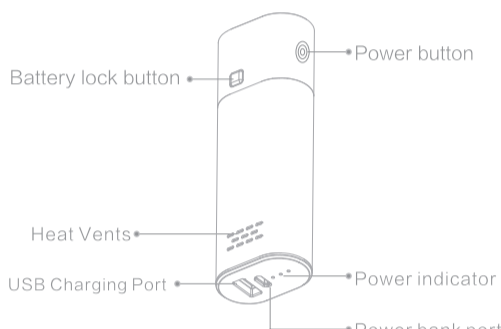


2 Remove the HEPA filter from the dust cup and take out the trash

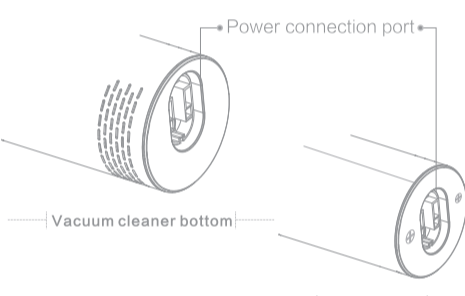
3 Use a towel, brush or paper tissue to clean the dust cup. If necessary, rinse the dust cup with water. Please dry it after washing



4 HEPA filter can be cleaned with water, Please dry it after washing

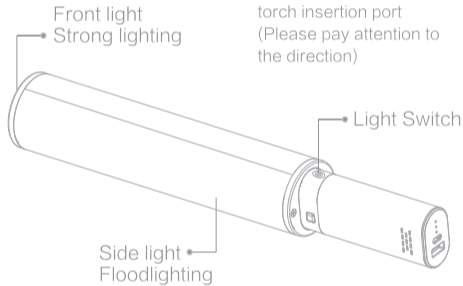


BATTERY



►How to use as a torch

Insert the battery to the torch insertion port
(Please pay attention to the direction)



First gear / second gear / third gear / fourth gear

1 Long-range torch
Effective range 200M

2 Floodlighting
50 square meters

3 Red and Blue Flashlight
SOS signal / Warning light,

4 Mosquito repellent yellow light
Repellent band 580nm

Remarks: Long press to turn off the power in any mode

WARM TIPS

Preparation before use

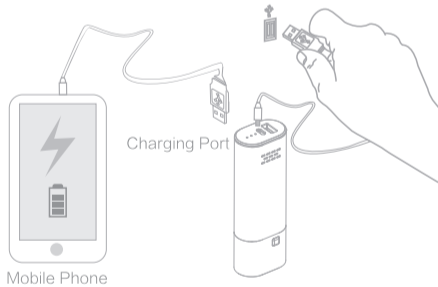
Confirm that all parts of this product are assembled in place
To ensure the normal use of the product, please check if the power is sufficient.

Charging instructions

The charging port is at the bottom of the power supply. When charging, the indicator light flashes. When fully charged, the three indicators are all on.
Insert the USB cable to the charging port of the power supply to recharge it.

How to use as a Power Bank

Battery of this product can be shared by vacuum cleaners and torch. It can also be used as a power bank.



HAZARDOUS MATERIAL CONTENTS AND NAMES

Parts name	Hazardous material					
	Lead (Pb)	Mercury (Hg)	Cadmium (Cd)	Hexavalent chromium (Cr (VI))	Polybrominated biphenyl (PBB)	Polybrominated diphenyl ethers (PBDE)
Outer Casing Component	○	○	○	○	○	○
Inner Plastic Component	○	○	○	○	○	○
Metal Component	○	○	○	○	○	○
battery cell	○	○	○	○	○	○
batteries	○	○	○	○	○	○
Circuit board	○	○	○	○	○	○

This table was compiled in accordance with the provisions of SJ/T11364.
○: This identifier indicates the contents of the hazardous material in one homogeneous material of the part were all below the limited standard of GB/T26572.

×: This identifier indicates the contents of the hazardous material in one homogeneous material of the part were above the limited standard of GB/T26572. (All the parts which were marked with "x" were all reached RoHS standard, or the hazardous material cannot be replaced because of global technical limitations.) (This table indicates these hazardous materials exist in the product, but not all above parts in the packed product.)

TROUBLE SHOOTING

Trouble	Reason	Solution
Doesn't work	Power shortage	Please recharge the battery
	Power is not turned on	Turn on the power
	Power is not connected correctly	Check and connect it correctly
Doesn't suck	Dust cup is not installed correctly	Check if the dust cup is installed in place
	Blockage at the product nozzle	Check and clean the nozzle
	HEPA filter blocked	Clean up HEPA filter
Too much noise	The dust cup is full	Clean up the garbage in the dust cup in time
	Blockage at the product nozzle	Check and clean the nozzle
	HEPA filter blocked	Clean up HEPA filter
	HEPA filter not installed	Please install HEPA filter correctly

BASIC PARAMETERS

Model No.	H1
Battery	2500mAh
Voltage	7.4V
Power(Max)	74W
Vacuum degree	5.5 KPa
Recharging time	3.5hrs
Charging input	5V=2A
USB Output	5V=1A 5000mAh

PRECAUTIONS WHEN USING

- When cleaning the dust, the HEPA filter must be installed to prevent the garbage from being sucked into the motor.
- Please keep the inside of the vacuum cleaner machine dry and do not use for long-term use.
- Do not touch combustible materials, any liquid or uncooled ash, as this may cause machine malfunction or fire.
- In case the vacuum cleaner stops to work or the suction force is too weak or the flashlight is too weak, please check the power supply.
- Please do not put the air outlet and suction port near the eyes, ears and hair to avoid injury.
- Please do not put the whole machine into the water, this product is not waterproof.
- Please turn off the power after use.
- If you are not a professional, please do not disassemble and repair it yourself.
- If you do not use this product for a long time, please put it in a cool place and charge it for at least 6 months to avoid over-discharge of the battery.
- Please clean the garbage in the filter dust bin in time. Clean and smooth filter can effectively reduce the negative pressure of the motor.
- Please use this product in accordance with the instructions in the manual. Any loss or damage caused by improper use is the responsibility of the user.