



Test Report

Report No. A2230102074101

Page 1 of 8

Company Name DONGGUAN FISTPOUND CRAFTWORKS CO., LTD.

shown on Report

Address NO.1# SHANGBIAN ROAD, PUXIN DIRECTORIAL AREA,SHIPAI
TOWN,DONGGUAN CITY, GUANGDONG,CN

The following sample(s) and sample information was/were submitted and identified by/on the behalf of the applicant

CTI Sample ID	Sample Name(s)
001	24K GOLD PLATED
002	GOLD PLATED
003	ANTIQUE GOLD PLATED
004	ANTIQUE SILVER PLATED
006	BLACK NICKEL PLATED
007	ANTIQUE NICKEL PLATED
008	SATIN GOLD PLATED
009	SATIN NICKEL PLATED
010	CHROME PLATED
011	COPPER PLATED
012	ANTIQUE COPPER PLATED
013	BRONZE PLATED
014	ANTIQUE BRONZE PLATED
015	DYE BLACK PLATED
016	NICKEL-NICKEL FREE PLATED
A2230102074102001	NICKEL PLATED

Sample Received Date Mar. 14, 2023

Testing Period Mar. 14, 2023 to Mar. 21, 2023

Test Conducted:

As requested by the applicant. For details refer to next page(s)



Approved by

Hill Zheng

Date

Mar. 21, 2023

Hill Zheng
Technical Manager

No. R411772577

Centre Testing International Group Co., Ltd.

CTI Building, Xing Dong Community, Xin'an Sub-district, Bao'an District, Shenzhen City, Guangdong Province, P.R. China

Test Report

Report No. A2230102074101

Page 2 of 8

Executive Summary:

TEST REQUEST

ASTM F963-17 Standard Consumer Safety Specification for Toy Safety

- Clause 4.3.5 Heavy elements – Migration of certain elements

CONCLUSION

PASS

***** For further details, please refer to the following page(s) *****

Test Report

Report No. A2230102074101

Page 3 of 8

ASTM F963-17 Standard Consumer Safety Specification for Toy Safety**▼ Clause 4.3.5 Heavy elements – Migration of certain elements**

Method(s) ASTM F963-17 Clause 8.3 was/were used, and the item(s) was/were determined by ICP-OES.

Tested Item(s)	Result (mg/kg)				MDL (mg/kg)	Limit (mg/kg)
	001	002	003	004		
Soluble Antimony (Sb)	N.D.	N.D.	N.D.	N.D.	5	60
Soluble Arsenic (As)	N.D.	N.D.	N.D.	N.D.	2.5	25
Soluble Barium (Ba)	N.D.	N.D.	N.D.	N.D.	5	1000
Soluble Cadmium (Cd)	N.D.	N.D.	N.D.	N.D.	5	75
Soluble Chromium (Cr)	N.D.	N.D.	N.D.	N.D.	2.5	60
Soluble Lead (Pb)	N.D.	N.D.	N.D.	N.D.	5	90
Soluble Mercury (Hg)	N.D.	N.D.	N.D.	N.D.	2.5	60
Soluble Selenium (Se)	N.D.	N.D.	N.D.	N.D.	5	500

Tested Item(s)	Result (mg/kg)				MDL (mg/kg)	Limit (mg/kg)
	006	007	008	009		
Soluble Antimony (Sb)	N.D.	N.D.	N.D.	N.D.	5	60
Soluble Arsenic (As)	N.D.	N.D.	N.D.	N.D.	2.5	25
Soluble Barium (Ba)	N.D.	N.D.	N.D.	N.D.	5	1000
Soluble Cadmium (Cd)	N.D.	N.D.	N.D.	N.D.	5	75
Soluble Chromium (Cr)	N.D.	N.D.	N.D.	N.D.	2.5	60
Soluble Lead (Pb)	N.D.	N.D.	N.D.	N.D.	5	90
Soluble Mercury (Hg)	N.D.	N.D.	N.D.	N.D.	2.5	60
Soluble Selenium (Se)	N.D.	N.D.	N.D.	N.D.	5	500

Test Report

Report No. A2230102074101

Page 4 of 8

Tested Item(s)	Result (mg/kg)				MDL (mg/kg)	Limit (mg/kg)
	010	011	012	013		
Soluble Antimony (Sb)	N.D.	N.D.	N.D.	N.D.	5	60
Soluble Arsenic (As)	N.D.	N.D.	N.D.	N.D.	2.5	25
Soluble Barium (Ba)	N.D.	N.D.	N.D.	N.D.	5	1000
Soluble Cadmium (Cd)	N.D.	N.D.	N.D.	N.D.	5	75
Soluble Chromium (Cr)	N.D.	N.D.	N.D.	N.D.	2.5	60
Soluble Lead (Pb)	N.D.	N.D.	N.D.	N.D.	5	90
Soluble Mercury (Hg)	N.D.	N.D.	N.D.	N.D.	2.5	60
Soluble Selenium (Se)	N.D.	N.D.	N.D.	N.D.	5	500

Tested Item(s)	Result (mg/kg)			MDL (mg/kg)	Limit (mg/kg)
	014	015	016		
Soluble Antimony (Sb)	N.D.	N.D.	N.D.	5	60
Soluble Arsenic (As)	N.D.	N.D.	N.D.	2.5	25
Soluble Barium (Ba)	N.D.	N.D.	N.D.	5	1000
Soluble Cadmium (Cd)	N.D.	N.D.	N.D.	5	75
Soluble Chromium (Cr)	N.D.	N.D.	N.D.	2.5	60
Soluble Lead (Pb)	N.D.	N.D.	N.D.	5	90
Soluble Mercury (Hg)	N.D.	N.D.	N.D.	2.5	60
Soluble Selenium (Se)	N.D.	N.D.	N.D.	5	500

Tested Item(s)	Result (mg/kg)	MDL (mg/kg)	Limit (mg/kg)
	A2230102074102001		
Soluble Antimony (Sb)	N.D.	5	60
Soluble Arsenic (As)	N.D.	2.5	25
Soluble Barium (Ba)	N.D.	5	1000
Soluble Cadmium (Cd)	N.D.	5	75
Soluble Chromium (Cr)	N.D.	2.5	60
Soluble Lead (Pb)	N.D.	5	90
Soluble Mercury (Hg)	N.D.	2.5	60
Soluble Selenium (Se)	N.D.	5	500

Test Report

Report No. A2230102074101

Page 5 of 8

Remark:

- MDL = Method Detection Limit
- N.D. = Not Detected (<MDL)
- mg/kg = ppm = parts per million
- Result(s) shown are of adjusted analytical results by subtracting analytical correction factor.

Sample/Part Description

No.	CTI Sample ID	Description
1	001	Metal with golden plating
2	002	Metal with golden plating
3	003	Metal with golden plating
4	004	Metal with grey plating
5	006	Metal with black plating
6	007	Metal with grey plating
7	008	Metal with golden plating
8	009	Metal with silvery plating
9	010	Metal with silvery plating
10	011	Metal with cupreous plating
11	012	Metal with cupreous plating
12	013	Metal with golden plating
13	014	Metal with bronze plating
14	015	Metal with black plating
15	016	Metal with silvery plating
16	A2230102074102001	Metal with silvery plating

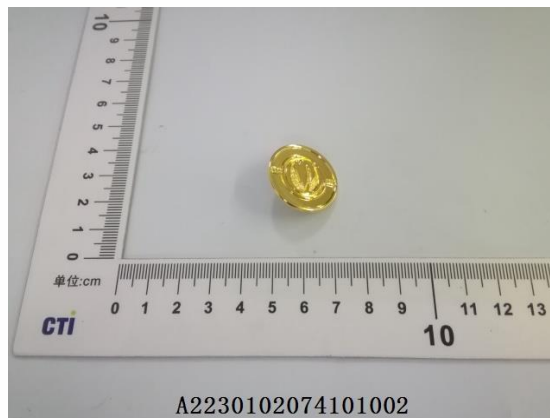
CTI 华测检测
章
CES

Test Report

Report No. A2230102074101

Page 6 of 8

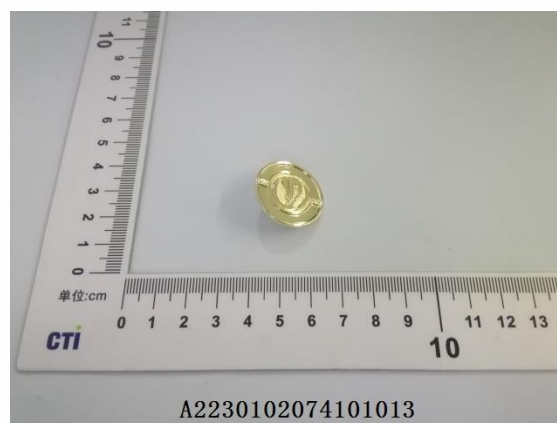
Photo(s) of the sample(s)



Test Report

Report No. A2230102074101

Page 7 of 8



Test Report

Report No. A2230102074101

Page 8 of 8



Statement:

1. This report is considered invalid without approved signature, special seal and the seal on the perforation;
2. The Company Name shown on Report and Address, the sample(s) and sample information was/were provided by the applicant who should be responsible for the authenticity which CTI hasn't verified;
3. The result(s) shown in this report refer(s) only to the sample(s) tested;
4. Without written approval of CTI, this report can't be reproduced except in full;
5. In case of any discrepancy between the English version and Chinese version of the testing reports (if generated), the Chinese version shall prevail.

*** End of Report ***